

Feature & Application



- One design for 3 applications, BSM、LCA and RCTA.
- ISO 17387 compliance.
- Programmable alert zone for different driving preferences.
- Wide range of supply voltage, 12V system and 24V system

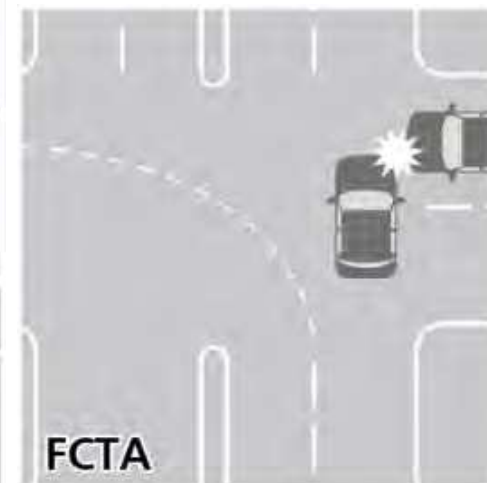


Feature & Application



UMD-RN03x

- One design for 3 applications, TA, FCTA and SA
- Programmable alert zone for different driving preferences.
- Wide range of supply voltage, 12V system and 24V system



One page specification

Basic parameters

- Operating voltage range: 9V–32 V
- Typical operating voltage: 12/24 V
- Ambient operating temperature: $-40\text{ }^{\circ}\text{C}$ to $+85\text{ }^{\circ}\text{C}$
- Maximum power consumption: 4.5W
- Operation frequency: 76~77 GHz
- Waterproofing: IP67

Performance parameters

Occupied bandwidth : <900MHz

Operation bandwidth : 750MHz

- FOV: -75° to 75°
- Range accuracy: $\pm 0.1\text{m}$
- Range resolution: 0.2 m
- Velocity accuracy: $\pm 0.13\text{m/s}$
- Velocity resolution: 0.26m/s
- Angle accuracy: ± 1.0 degree
- Maximum number of tracking objects: 32
- CAN output cycle time: 50 ± 5 ms.

Detection target

Truck, Passenger Car, Motorcycle

Weight

The sensor weight is $87\pm 10\text{g}$ for each sensor.

Sensor size

$91.99*83.07*19.41\pm 3$ mm (L*W*H)
with connector and fixed hole.

IO Interface

- SUMITOMO 90980-12303 connector
- 2 CAN interface

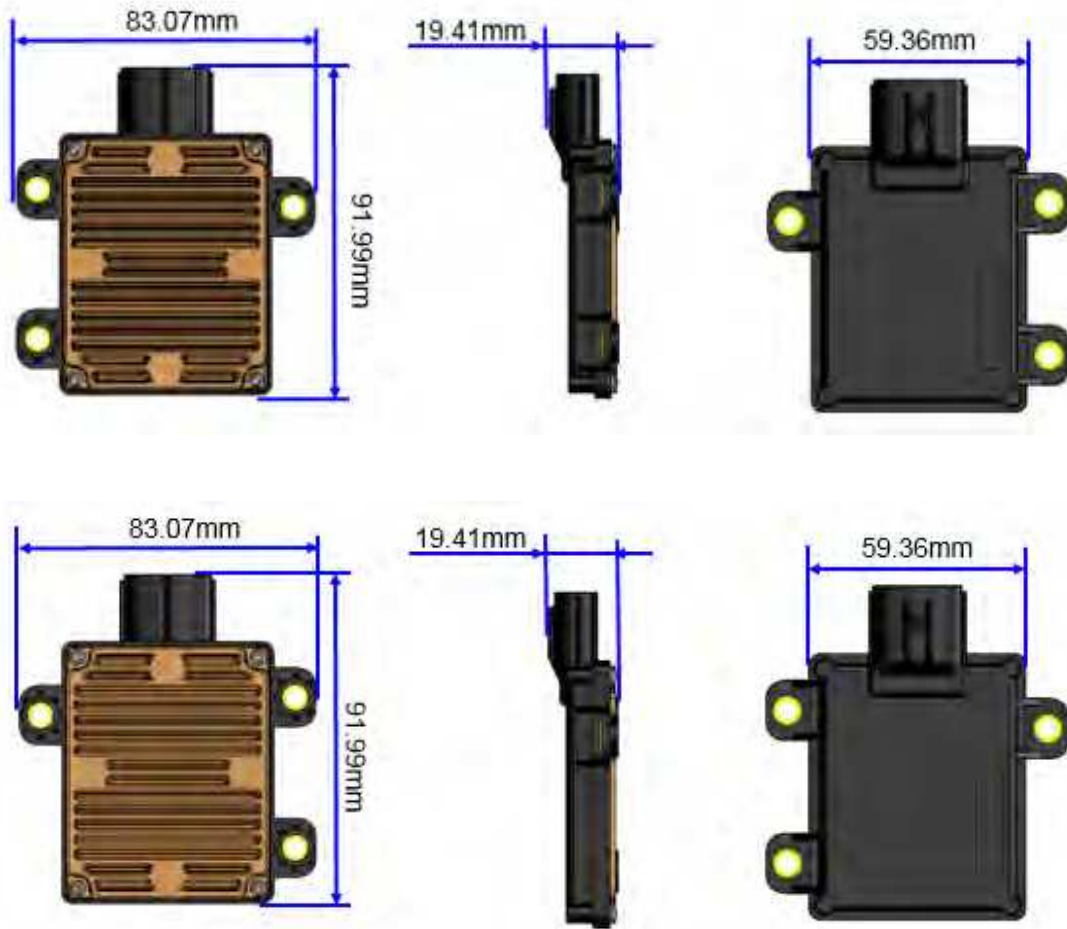
Installation

Rear corner of vehicle (UMD-RN02x)

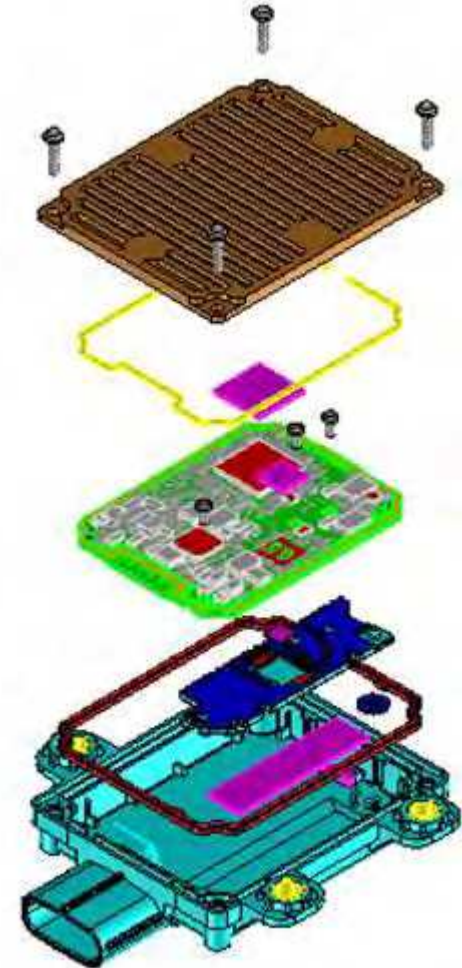
Front corner of vehicle (UMD-RN03x)



Product Dimensional Drawings



Explode Assembly Diagram



Federal Communication Commission Interference Statement

This equipment has been tested and found to comply with the limits for a Class B digital device, pursuant to Part 15 of the FCC Rules. These limits are designed to provide reasonable protection against harmful interference in a residential installation. This equipment generates, uses and can radiate radio frequency energy and, if not installed and used in accordance with the instructions, may cause harmful interference to radio communications. However, there is no guarantee that interference will not occur in a particular installation. If this equipment does cause harmful interference to radio or television reception, which can be determined by turning the equipment off and on, the user is encouraged to try to correct the interference by one of the following measures:

- Reorient or relocate the receiving antenna.
- Increase the separation between the equipment and receiver.
- Connect the equipment into an outlet on a circuit different from that to which the receiver is connected.
- Consult the dealer or an experienced radio/TV technician for help.

FCC Caution: Any changes or modifications not expressly approved by the party responsible for compliance could void the user's authority to operate this equipment.

This device complies with Part 15 of the FCC Rules. Operation is subject to the following two conditions: (1) This device may not cause harmful interference, and (2) this device must accept any interference received, including interference that may cause undesired operation.

Professional installation is required

IMPORTANT NOTE:

FCC Radiation Exposure Statement:

This equipment complies with FCC radiation exposure limits set forth for an uncontrolled environment. This equipment should be installed and operated with minimum distance **20cm** between the radiator & your body.

