

Figure 1: NG12 PRI/PAB RF PED UPPER BAY



Figure 2: NG12 PRI/PAB RF PED LEFT SIDE



Figure 3: NG12 PRI/PAB RF PED RIGHT SIDE

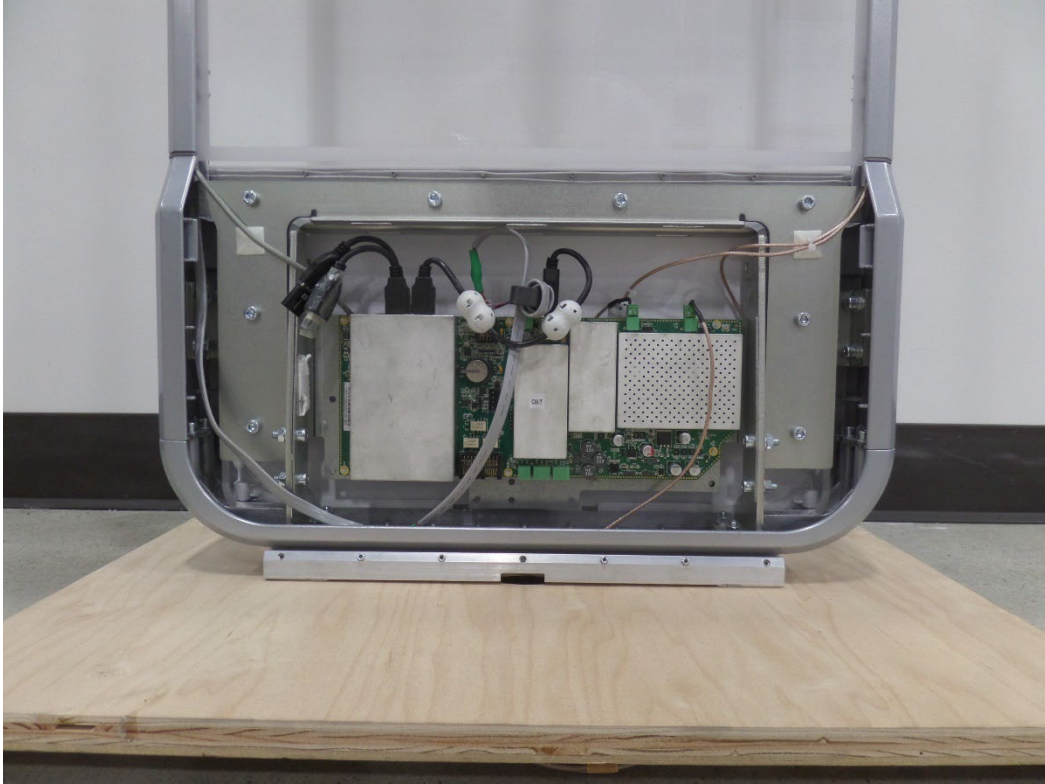


Figure 4: NG12 PRI/PAB RF PED LOWER BAY FRONT SIDE

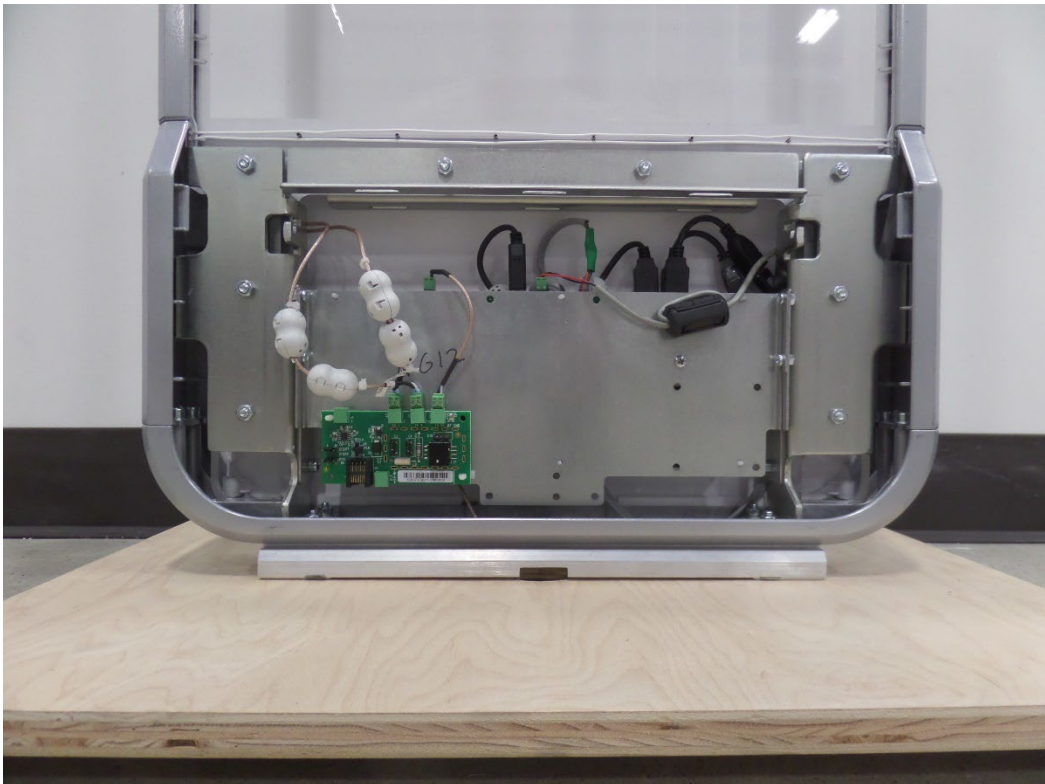


Figure 5: NG12 PRI/PAB RF PED LOWER BAY BACK SIDE



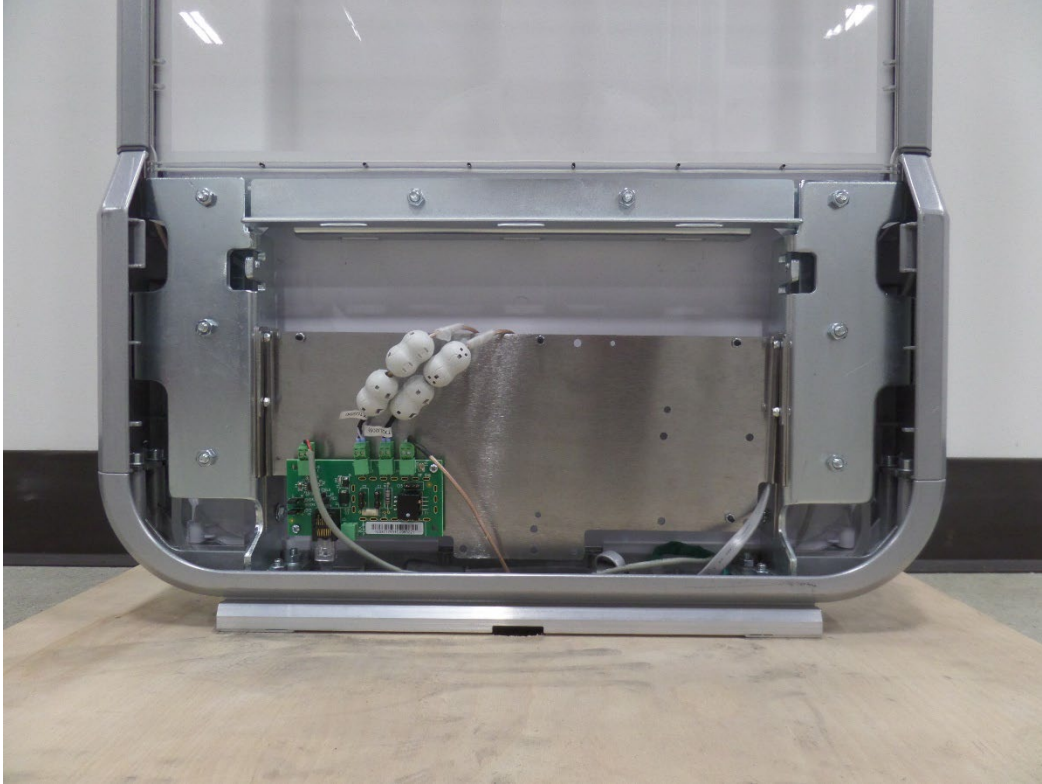


Figure 6: NG12 SAB RF PED LOWER BAY

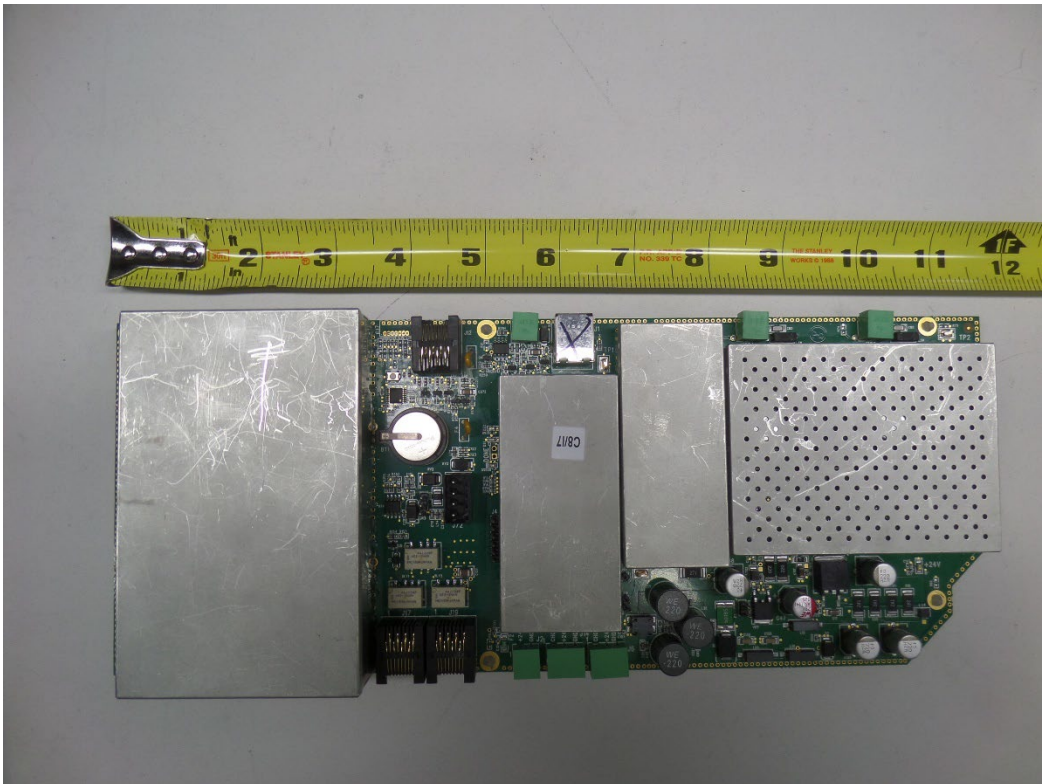


Figure 7: NG12 PRI/PAB RF PED EAS RF BOARD TOP SIDE

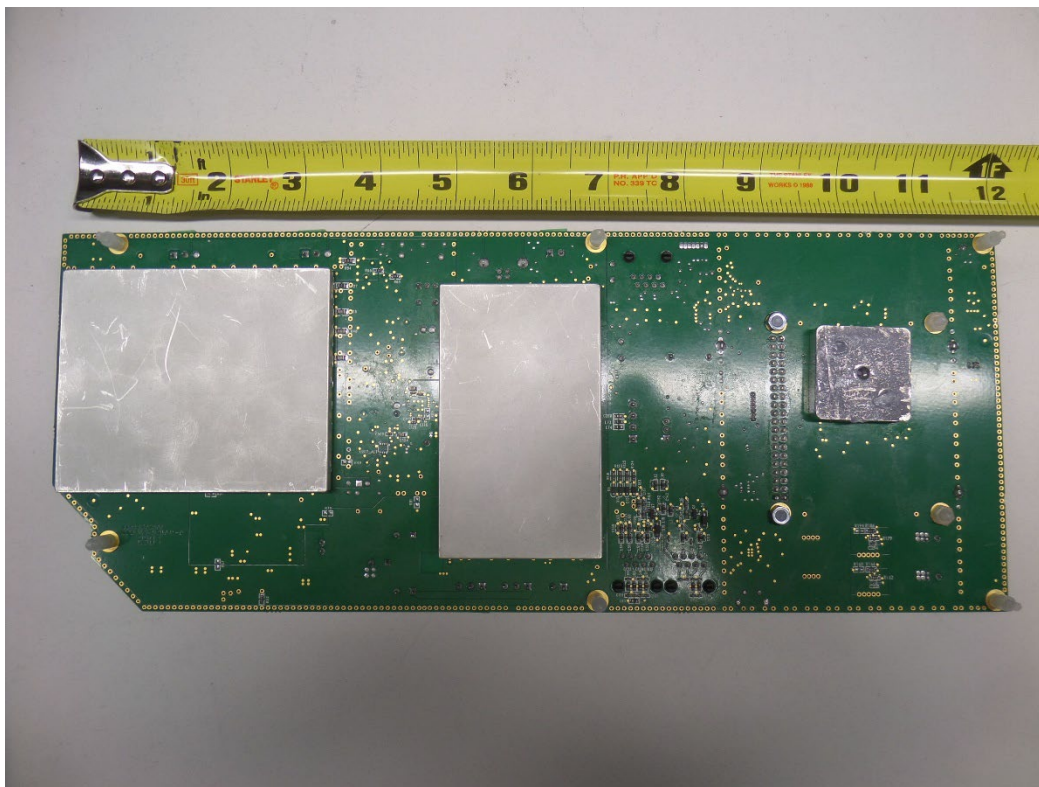


Figure 8: NG12 PRI/PAB RF PED EAS RF BOARD BOTTOM SIDE

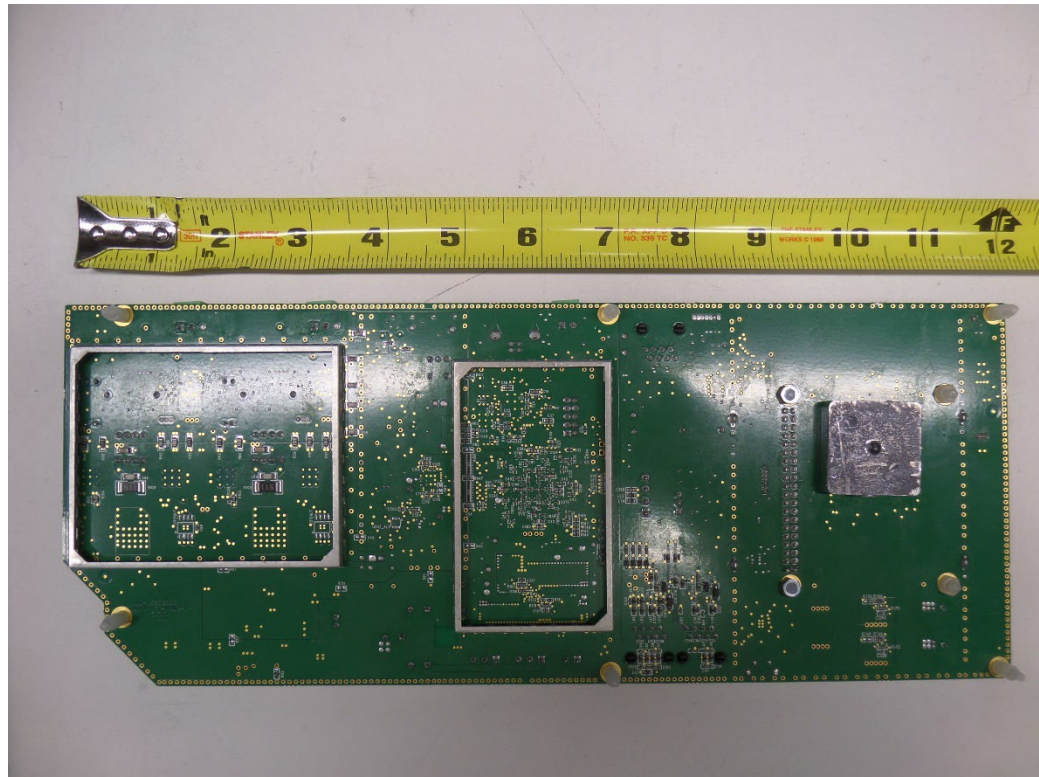


Figure 9: NG12 PRI/PAB RF PED EAS RF BOARD BOTOM SIDE WITHOUT SHIELDS



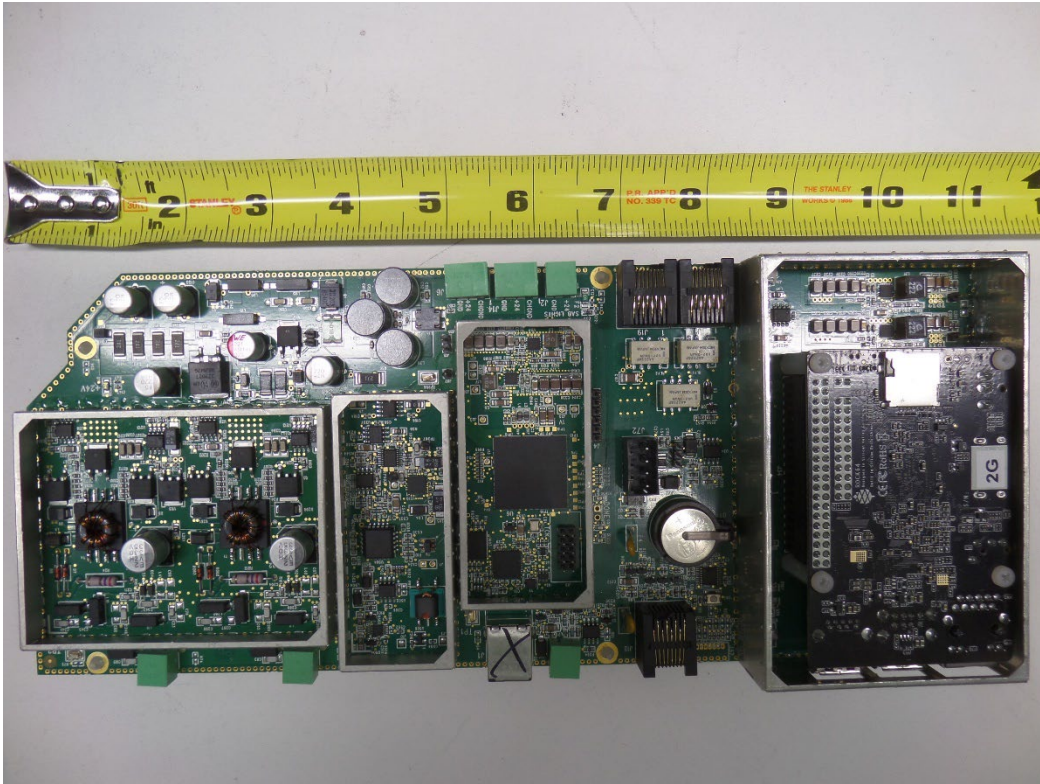


Figure 10: NG12 PRI/PAB RF PED EAS RF BOARD TOP SIDE WITHOUT SHIELDS

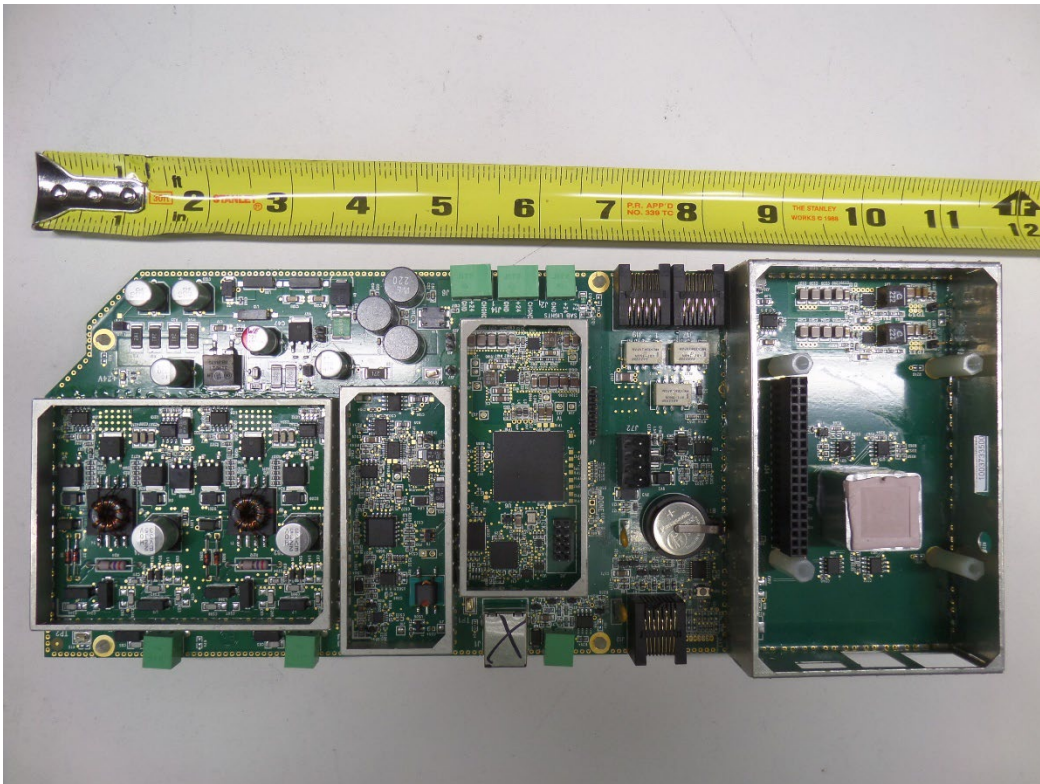


Figure 11: NG12 PRI/PAB RF PED EAS RF BOARD TOP SIDE ROCK64 BOARD REMOVED



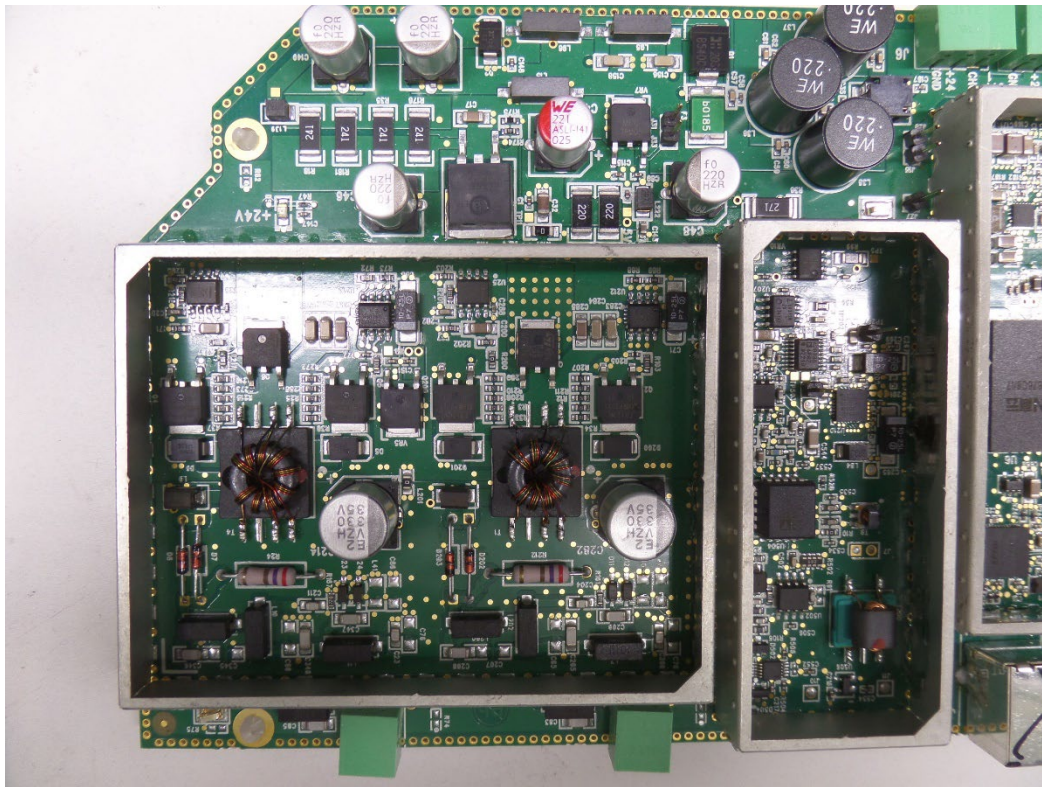


Figure 12: NG12 PRI/PAB RF PED EAS RF BOARD TOP SIDE RF SECTION

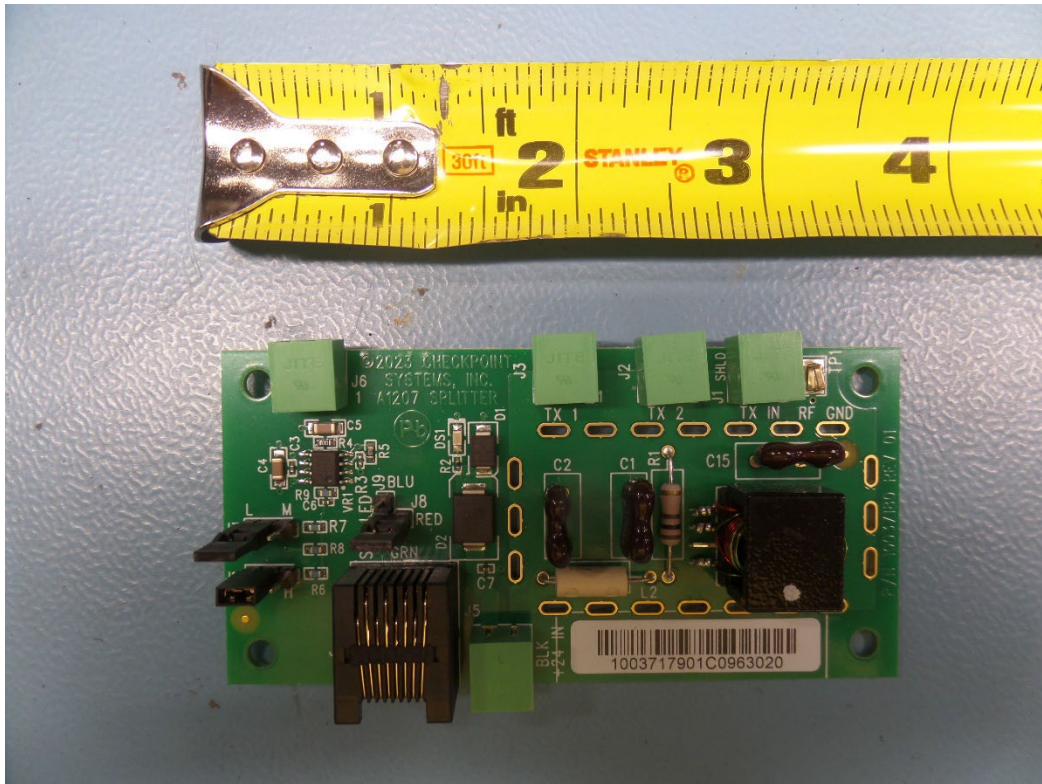


Figure 13: NG12 PRI/PAB RF PED, NP22 SAB RF PED SPLITTER BOARD TOP SIDE



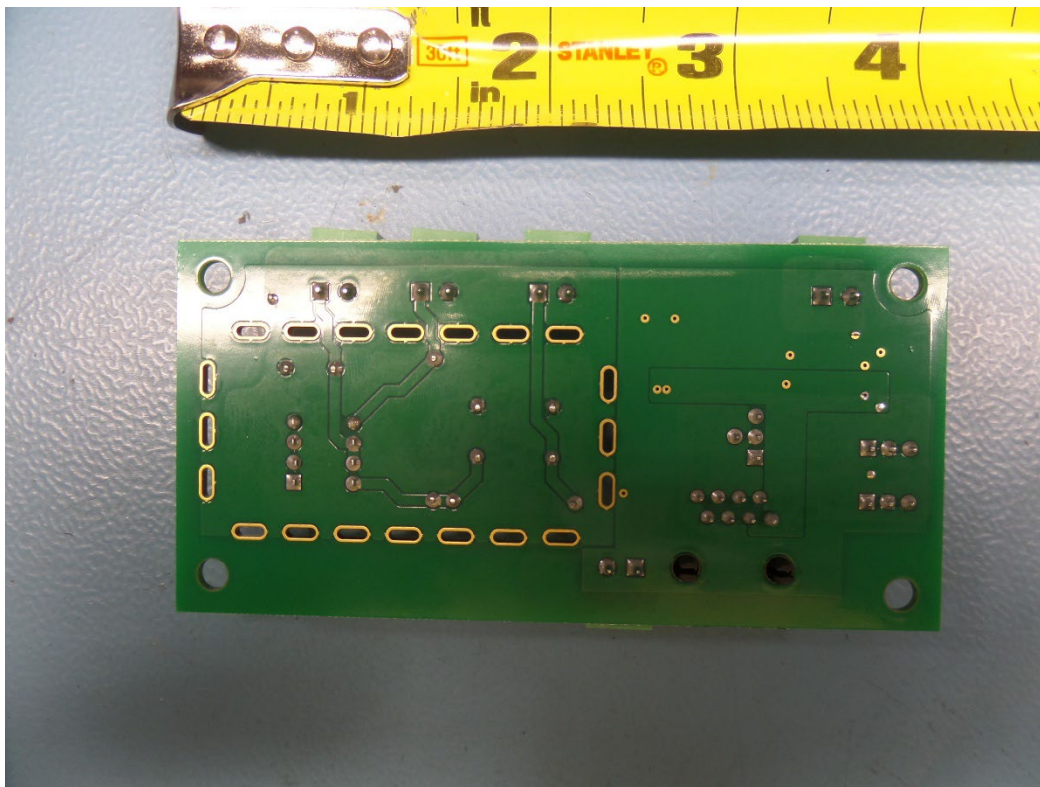


Figure 14: NG12 PRI/PAB RF PED, NP22 SAB RF PED SPLITTER BOARD BOTTOM SIDE

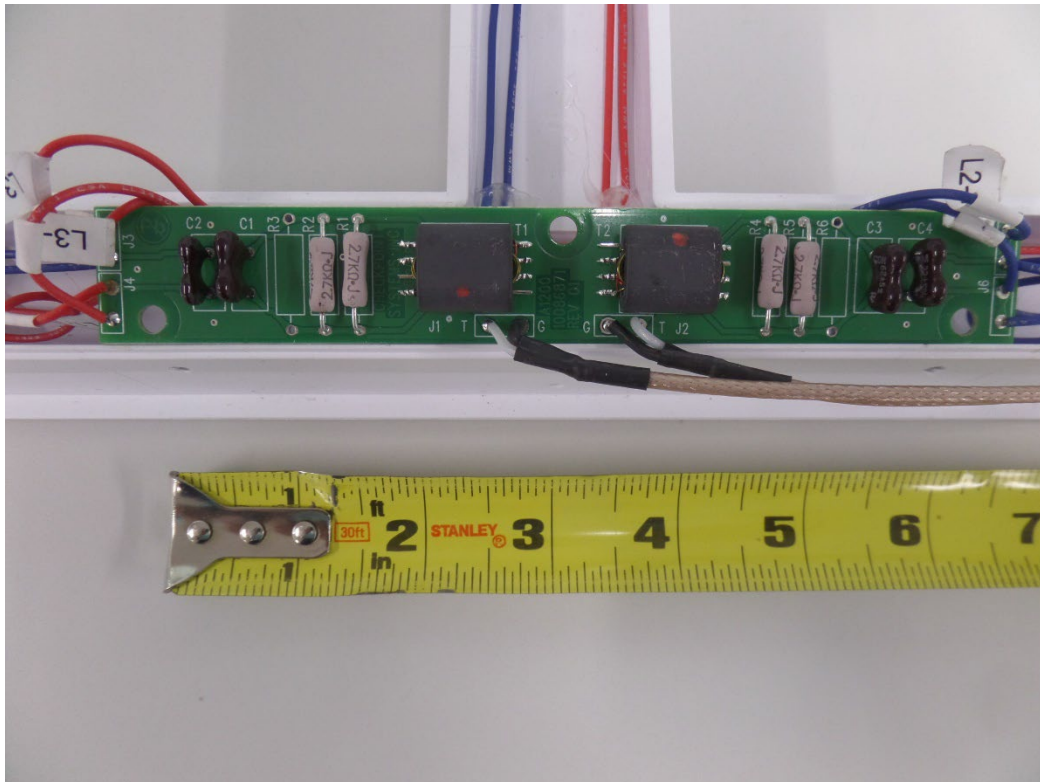


Figure 15: NG12 PRI/PAB RF PED MATCHING BOARD TOP SIDE

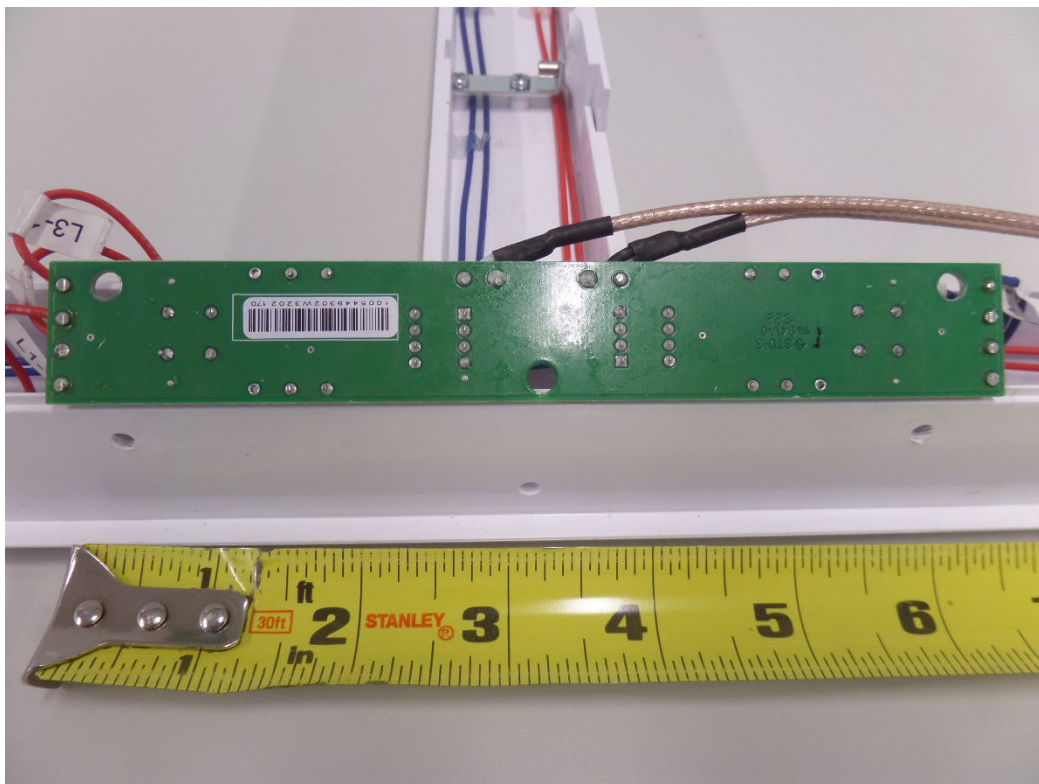


Figure 16: NG12 PRI/PAB RF PED MATCHING BOARD BOTTOM SIDE

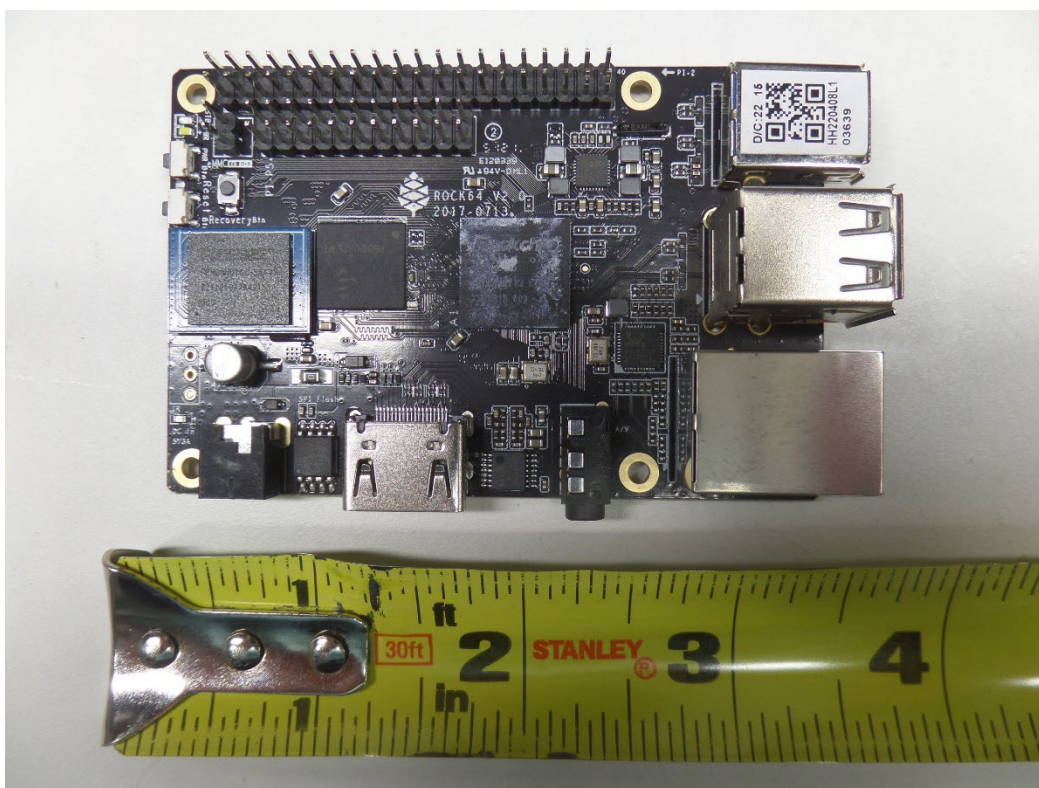


Figure 17: NG12 PRI/PAB RF PED ROCK 64 BOARD TOP SIDE



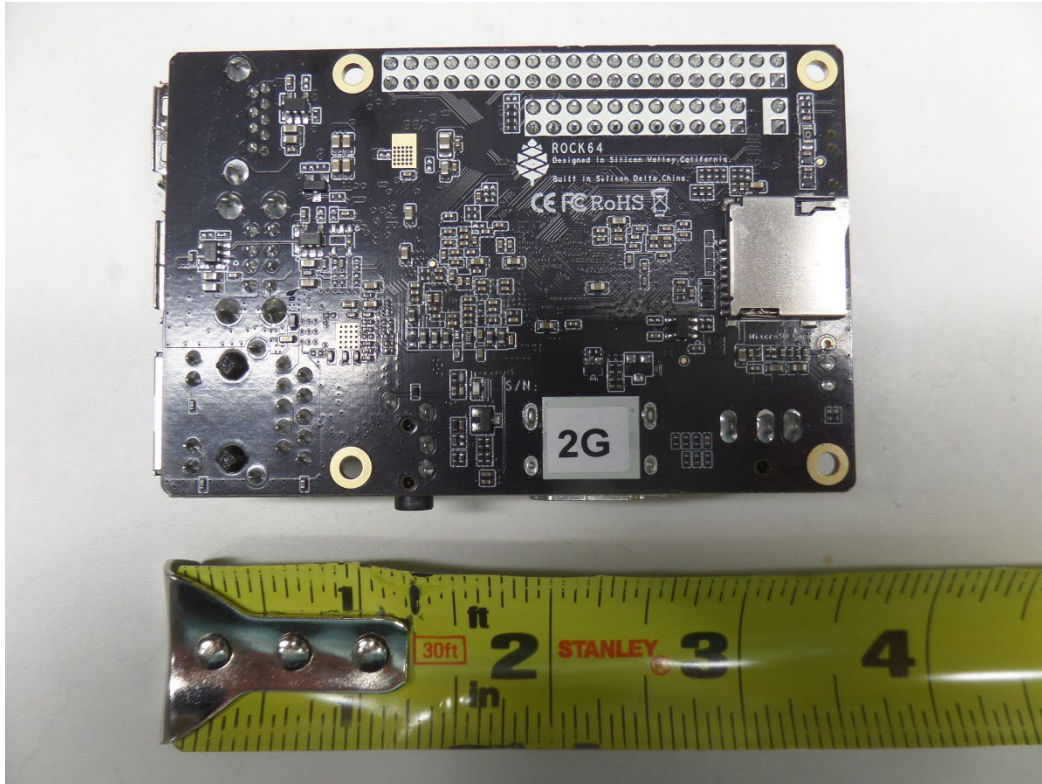


Figure 18: NG12 PRI/PAB RF PED ROCK 64 BOARD BOTTOM SIDE