



Quick Installation Guide

AX3600 Wireless Dual-Band Multi-Gigabit Ceiling Mount Access Point
EAP660 HD



Setup with videos

Visit <https://www.tp-link.com/support/setup-video/> or scan the QR code to search for the setup video of your product model.



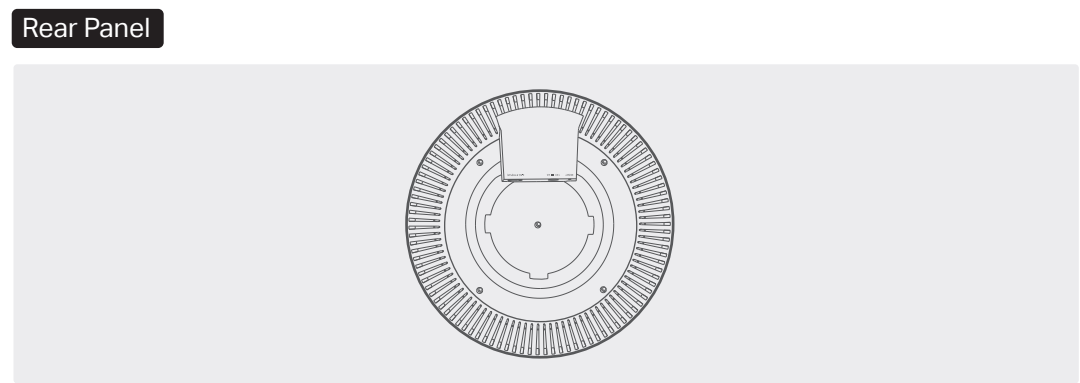
1 Hardware Overview

Note: The image may differ from the actual product.



LED Indicator
On: Working normally/Initializing.
Off: Working abnormally/Power off/LED is turned off.
Flashing:

- **Initialization:** The LED flashes twice after initialization is completed.
- **Upgrade:** The LED flashes once per second while upgrading.
- **Reset:** The LED flashes quickly five times during the reset. The EAP will then reboot.
- **Locate:** When the **Locate** feature is activated in the Omada Controller, the LED flashes quickly to locate and identify the device. And the LED will not stop flashing until **Locate** is disabled. The LED can flash for 10 minutes at most during this process.



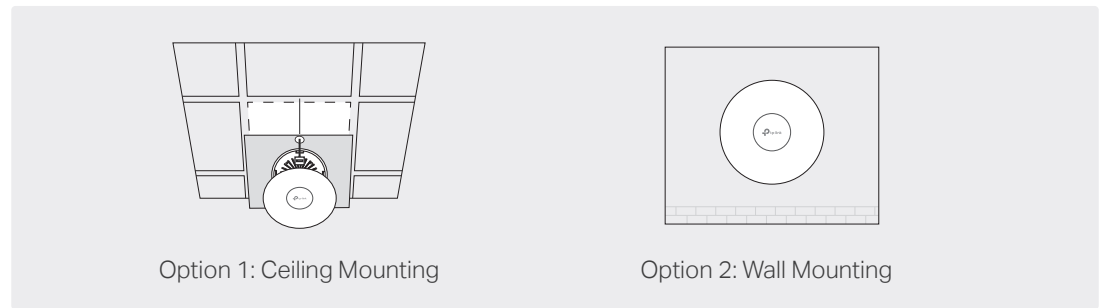
RESET
With the device powered on, press and hold the button for about 5 seconds until the LED flashes quickly . Then release the button. The device will restore to factory default settings.

Ethernet Port: 2.5G ETH (PoE)
The port is used to connect to a router or a switch to transmit data, or to a PSE (Power Sourcing Equipment), such as a PoE switch, for both data transmission and Power over Ethernet (PoE) through Ethernet cable. The port supports transmission speed of 10/100/1000/2500 Mbps.

Power Port: 12V = 2A
Plug one end of the provided power adapter to this port and the other end to a standard electrical wall outlet to power the EAP.

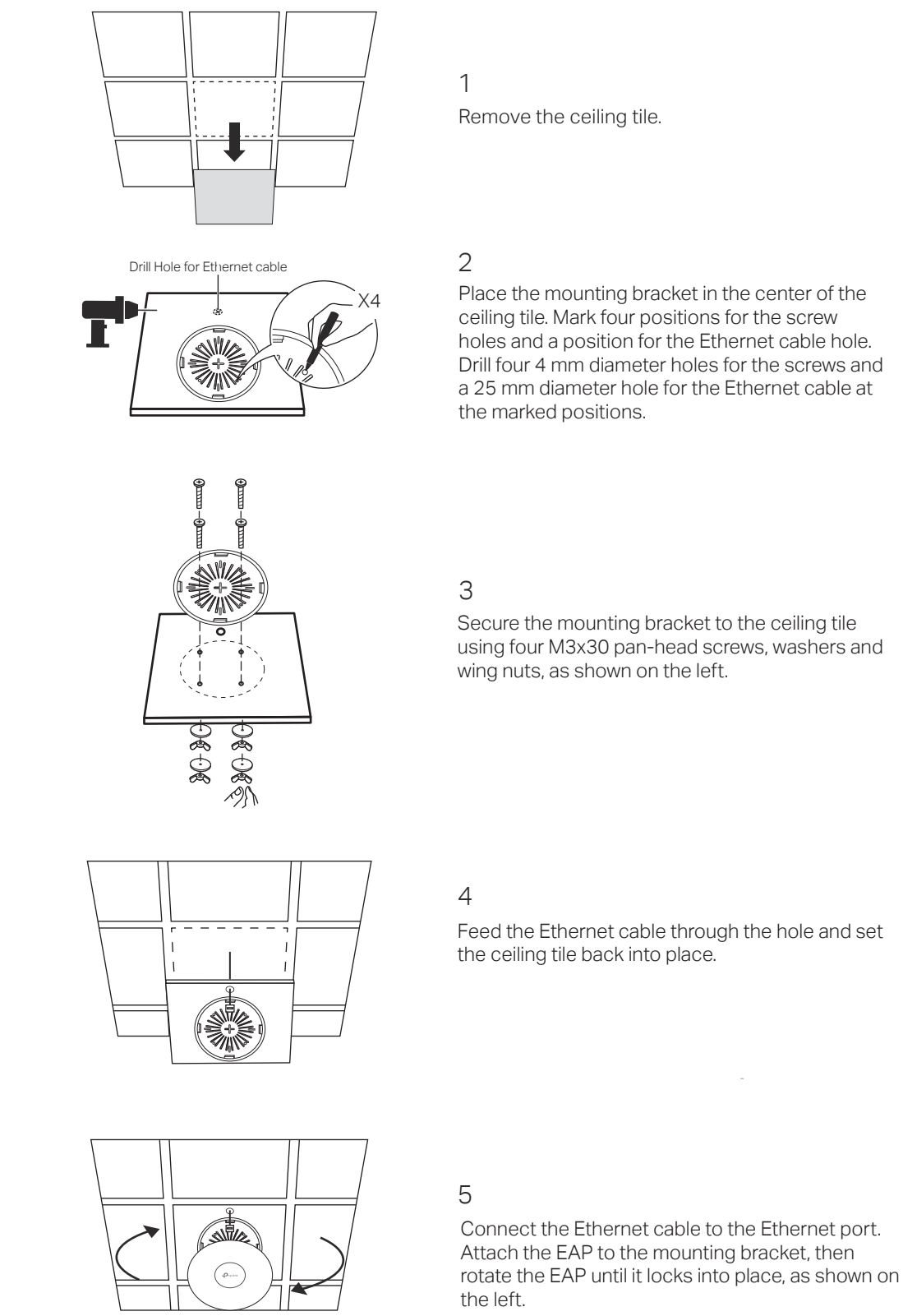
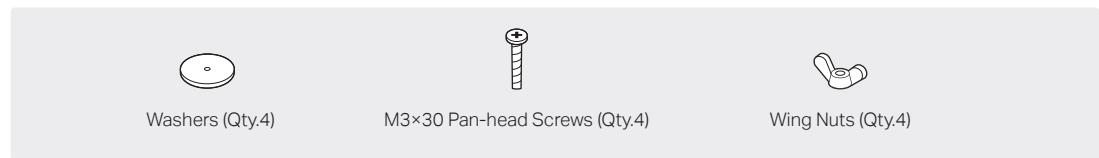
2 Hardware Installation

The EAP can be ceiling-mounted or wall-mounted. Choose a mounting method according to your needs. Follow the steps below for the appropriate installation.

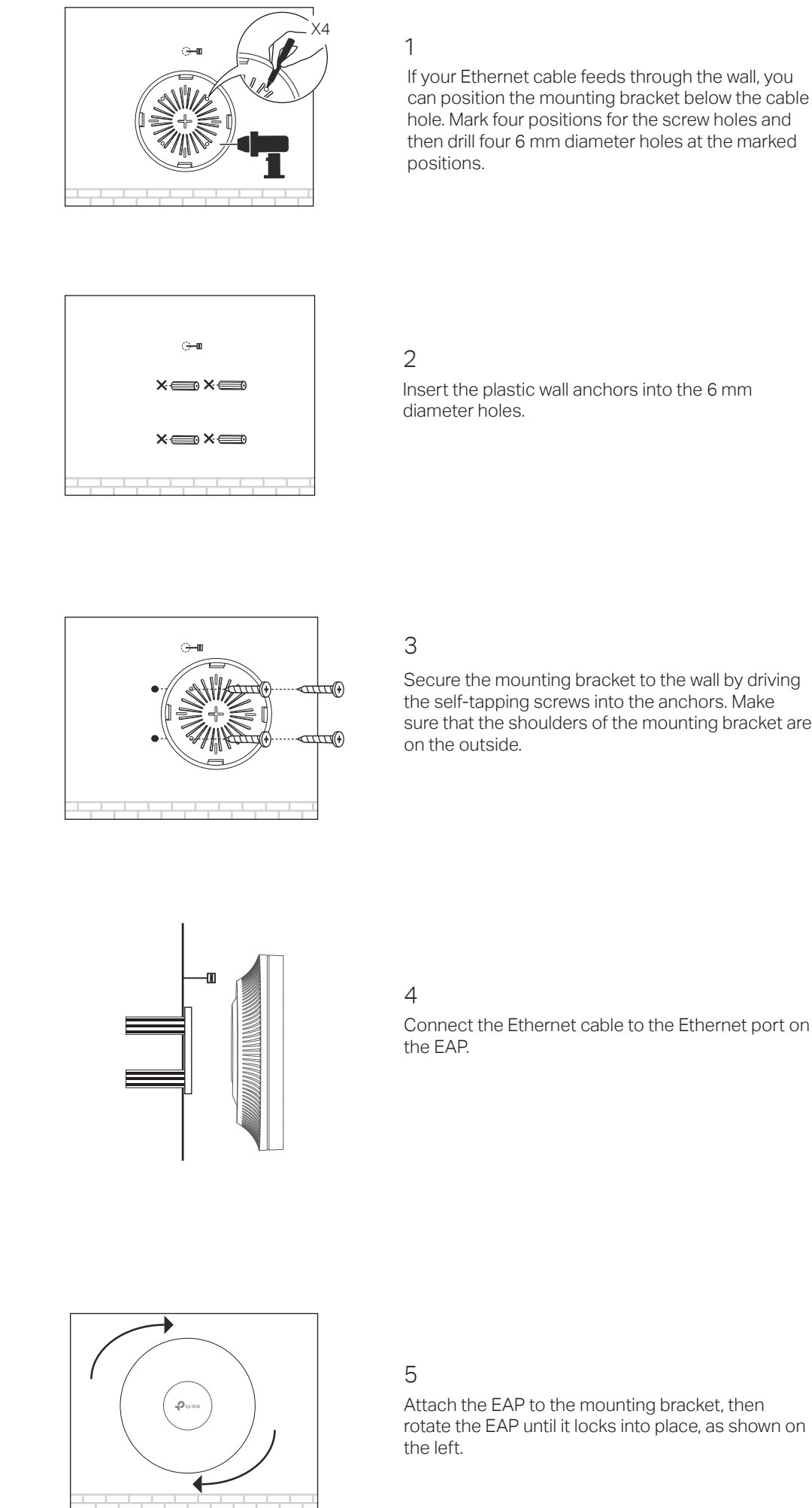
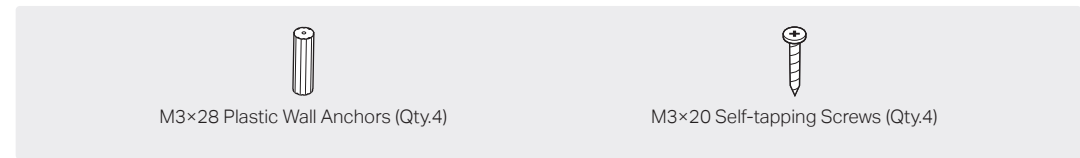


Option1: Ceiling Mounting

Note: Make sure that the ceiling tile is bigger than the EAP.



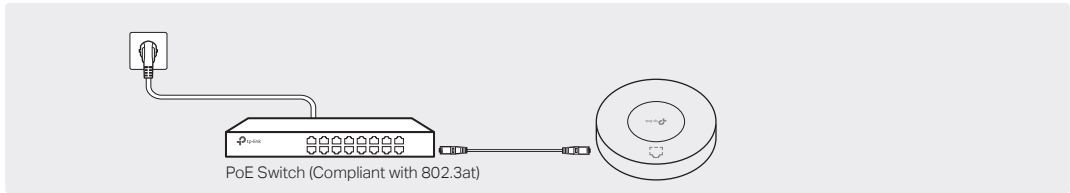
Option2: Wall Mounting



3 Power Supply

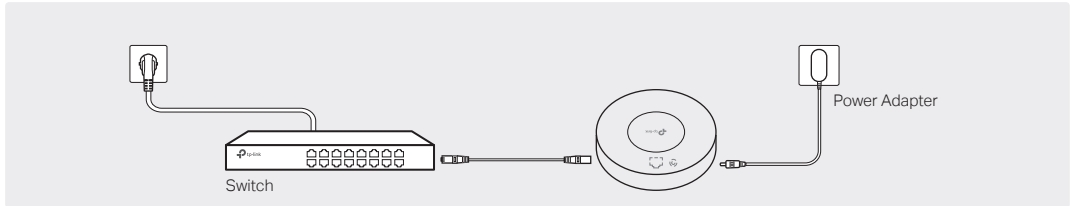
The EAP can be powered via a power adapter or a PSE device (such as a PoE switch).

Option1: Via PoE Switch (Compliant with 802.3at)



Connect an Ethernet cable from the PoE switch (compliant with 802.3at) to the Ethernet port.

Option2: Via Power Adapter



Plug one end of the provided power adapter into the power port of the EAP and the other end to a standard electrical wall outlet.

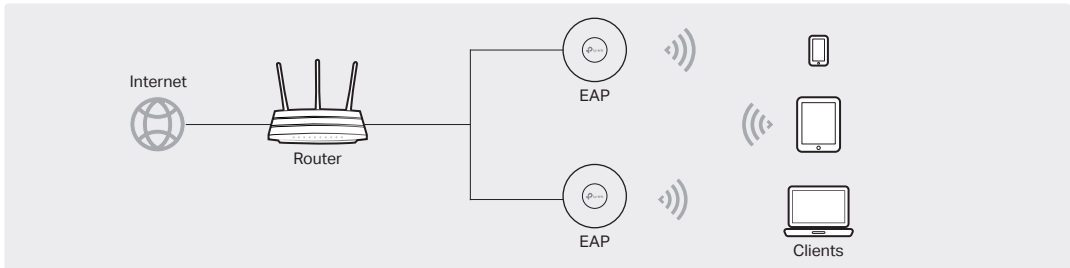
4 Software Configuration

A DHCP server (typically a router with DHCP function enabled) is required to assign IP addresses to the EAPs and clients in your local network.

The EAP supports two configuring options:

- To configure and manage EAPs singly (usually suitable for a small network with a few EAPs), Standalone Mode is recommended. Please refer to Option 1.
- To configure and manage EAPs in batch, Controller Mode is recommended. Please refer to Option 2.

Option1: Standalone Mode



Via Omada App

- Download the TP-Link Omada App on your mobile device. It can be downloaded from Apple Store or Google Play:



- Connect your mobile device to the EAP by using the default SSID (format: **TP-Link_2.4GHz/5GHz_XXXXXX**) printed on the label at the bottom of the product.
- Open the Omada App, and wait for the EAP to appear on the **Standalone APs** page. Tap on the EAP you want to configure.

The Omada App is designed to help you quickly configure the common settings. If you want to configure advanced settings, log in to the web page of your EAP or the controller.

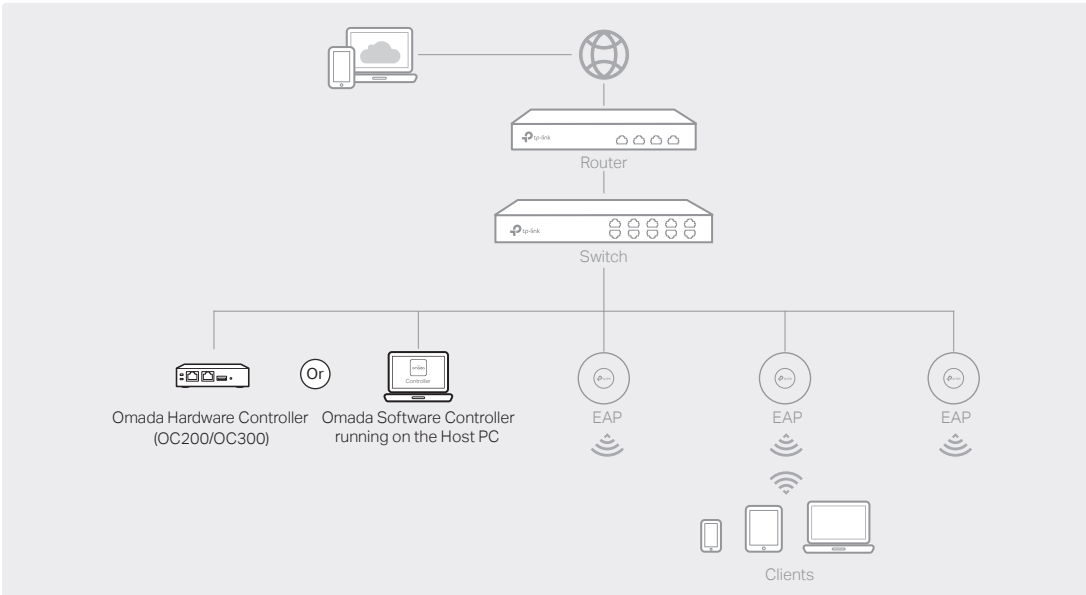
Via a Web Browser

- Connect wirelessly by using the default SSID (format: **TP-Link_2.4GHz/5GHz_XXXXXX**) printed on the label at the bottom of the product.
- Launch a web browser and enter **http://tplinkeap.net** in the address bar. Use **admin** for both Username and Password to log in.
- Set up a new Username and Password for secure management purpose. Modify the wireless parameters and reconnect your wireless devices to the new wireless network.

To configure other EAPs, connect your device to the EAP by the corresponding default SSID and repeat the steps listed above. You can configure some basic functions in Standalone Mode. If you want to configure advanced functions, use Controller Mode.

Option2: Controller Mode

Controller Mode is applicable to configuration for mass EAPs. All EAPs can be centrally configured and monitored via Omada Software Controller, Omada Hardware Controller (OC200/OC300) or Omada Cloud-Based Controller.



Via Omada Software Controller

- On the PC with Windows OS or Linux OS, download the Omada Software Controller installation file from <https://www.tp-link.com/support/download/omada-software-controller/>.
- Run the file and follow the wizard to install the Omada Software Controller.
- Launch the Omada Software Controller and follow the step-by-step instructions to complete the Quick Setup.
- After the wizard is finished, a login screen will appear. Enter the username and password you created and click **Log in**. Then you can further configure the controller.

Omada Cloud Service

After installing Omada Software Controller, you can remotely access and configure the controller through Omada Cloud Service. Follow the steps below.

- Enable **Cloud Access** on the setting page on the controller and bind a TP-Link ID to your controller. If you have configured this in the setup wizard, skip the step.
- Launch a web browser and enter <https://omada.tplinkcloud.com> in the address bar.
- Enter your TP-Link ID and password to log in. A list of controllers that have been bound with your TP-Link ID will appear. Then you can click **Launch** to further configure the controller.

* Omada App

With Omada App, you can also manage your Omada Software Controller at a local site and remote site. Note that Omada Software Controller needs to be kept running when using Omada App.

- Download the TP-Link Omada App on your mobile device. It can be downloaded from Apple Store or Google Play:

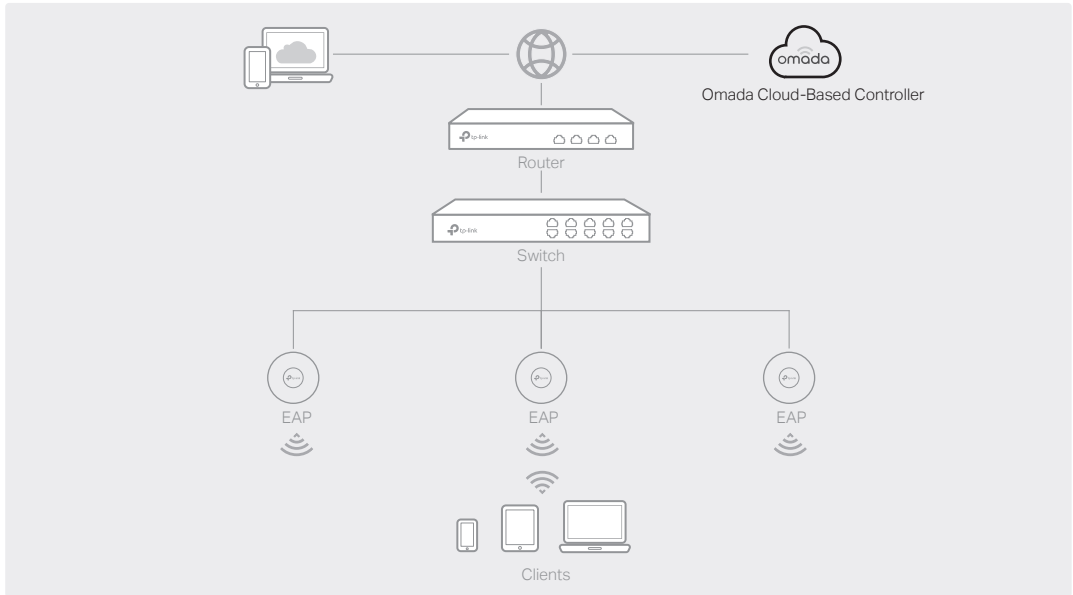


- Launch your Omada App and configure the controller at local a site or remote site.

- Local Management
 - Connect your mobile device to the EAP by using the default SSID (format: **TP-Link_2.4GHz/5GHz_XXXXXX**) printed on the label at the bottom of the product.
 - Launch Omada App and go to **Local Access**, tap the **+** button on the upper-right corner to add the controller. Then you can further configure the controller.
- Remote Management
 - Make sure **Cloud Access** is enabled on your controller and your controller has been bound with your TP-Link ID.
 - Launch Omada App and log in with your TP-Link ID. Then go to **Cloud Access**. A list of controllers that have been bound with your TP-Link ID will appear. Then you can further configure the controller.

Via Omada Hardware Controller (OC200/OC300)

Omada Hardware Controller (OC200/OC300), which is pre-installed with Omada Software Controller, is a good alternative if you have no spare PC to keep running Omada Software Controller in the network. It needs to be purchased additionally. For more details, refer to the Installation Guide of OC200/OC300.



Via Omada Cloud-Based Controller

- Launch a web browser and enter <https://omada.tplinkcloud.com> in the address bar. Then enter your TP-Link ID and password to log in.
- Click **Add Controller** and subscribe to Omada Cloud-Based Controller. Follow the instructions to choose a plan and complete the payment. Then wait until your controller is deployed.
- The controller will appear in the list once bound with your TP-Link ID. Click **Launch** and follow the step-by-step instructions to complete the Quick Setup. After the wizard is finished, log in via the created username and password.
- Click **Devices** on the side bar and then click **Add Devices**. Then you can add devices to the controller manually through the serial numbers at the bottom of the product.

* Omada App

With Omada App, you can also manage your Omada Cloud-Based Controller.

- Download the TP-Link Omada App on your mobile device. It can be downloaded from Apple Store or Google Play:



- Launch Omada App and log in with your TP-Link ID. Then go to **Cloud Access**. A list of controllers that have been bound with your TP-Link ID will appear. Then you can further configure the controller.

For detailed configurations, please visit <https://www.tp-link.com/support/download/> to download the User Guides of EAP and controller in the download center.

- To ask questions, find answers, and communicate with TP-Link users or engineers, please visit <https://community.tp-link.com> to join TP-Link Community.
- For technical support, the user guide and other information, please visit <https://www.tp-link.com/support>, or simply scan the QR code.
- If you have any suggestions or needs on the product guides, welcome to email techwriter@tp-link.com.cn.



Safety Information

- Keep the device away from water, fire, humidity or hot environments.
- Do not attempt to disassemble, repair, or modify the device. If you need service, please contact us.
- Do not use the device where wireless devices are not allowed.
- Do not use damaged charger or USB cable to charge the device.
- Do not use any other chargers than those recommended.
- Adapter shall be installed near the equipment and shall be easily accessible.

The products of TP-Link partly contain software code developed by third parties, including software code subject to the GNU General Public License ("GPL"). As applicable, the terms of the GPL and any information on obtaining access to the respective GPL Code used in TP-Link products are available to you in GPL-Code-Centre under (<https://www.tp-link.com/en/support/gpl/>). The respective programs are distributed WITHOUT ANY WARRANTY and are subject to the copyrights of one or more authors. For details, see the GPL Code and other terms of the GPL.

