



KPNP



01. Functions for each icon

Qualification Senior M -54 kg

CHUNG (BHU) vs HONG (GER)

MATCH 001

2:00

ROUND 1

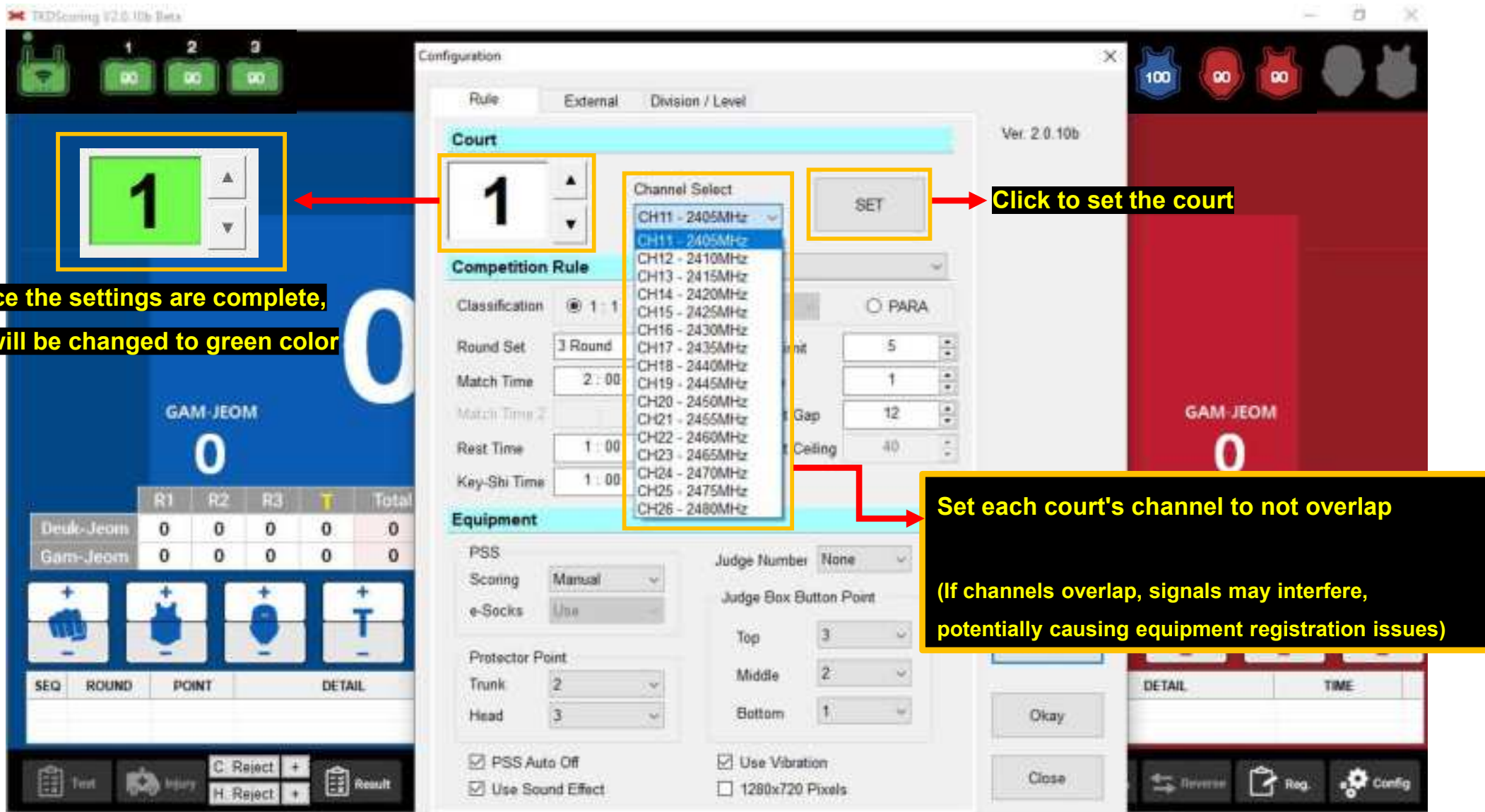
C WIN H WIN

Icons and Functions:

- A:** Taekwondo icon
- B:** Taekwondo icon
- C:** C. Read
- D:** H. Read
- E:** Result
- F:** Video icon
- G:** Play icon
- H:** Pause icon
- I:** Clock icon
- J:** Power icon
- K:** Video icon
- L:** Score icon
- M:** Reverse icon
- N:** Reg. icon
- O:** Config icon
- P:** Equipment Connection Status
- Q:** PSS Connection Status and Battery Level
- R:** PSS Hit Level

- A. Start/End Test Mode
- B. Call Doctor
- C. Remove Video Playback Count
- D. Add Video Playback Count
- E. Display and Print Record Paper
- F. Chung Video Replay
- G. Start match
- H. Pause
- I. Keyshi
- J. End Match
- K. Hong Video Replay
- L. Turn On/Off Scoreboard Display
- M. Switch Scoreboard Screen (Chung, Hong)
- N. Settings – System and Match Rules
- O. Registration – Equipment and Match
- P. Equipment Connection Status
- Q. PSS Connection Status and Battery Level
- R. PSS Hit Level

02. Court setup



Once the settings are complete, it will be changed to green color

Click to set the court

Set each court's channel to not overlap
(If channels overlap, signals may interfere, potentially causing equipment registration issues)

Configuration

Rule: External Division / Level

Court

1

Channel Select

- CH11 - 2405MHz
- CH12 - 2410MHz
- CH13 - 2415MHz
- CH14 - 2420MHz
- CH15 - 2425MHz
- CH16 - 2430MHz
- CH17 - 2435MHz
- CH18 - 2440MHz
- CH19 - 2445MHz
- CH20 - 2450MHz
- CH21 - 2455MHz
- CH22 - 2460MHz
- CH23 - 2465MHz
- CH24 - 2470MHz
- CH25 - 2475MHz
- CH26 - 2480MHz

Competition Rule

Classification: 1:1

Round Set: 3 Round

Match Time: 2:00

Match Time 2:

Rest Time: 1:00

Key-Shi Time: 1:00

Equipment

PSS: Scoring: Manual e-Socks: Use

Protector Point: Trunk: 2 Head: 3

Judge Number: None

Judge Box Button Point: Top: 3 Middle: 2 Bottom: 1

☒ PSS Auto Off ☒ Use Vibration ☐ 1280x720 Pixels

Ver. 2.0.10b

GAM-JEOM 0

| | R1 | R2 | R3 | T | Total |
|-----------|----|----|----|---|-------|
| Deuk-Jeom | 0 | 0 | 0 | 0 | 0 |
| Gam-Jeom | 0 | 0 | 0 | 0 | 0 |

SEQ ROUND POINT DETAIL

Test Injury C: Reject + H: Reject + Result

DETAIL TIME

Reverse Reg. Config

03. Set up the rule

Configuration

Rule External Division / Level

Ver. 2.0.10b

Court

1 Channel Select CH11 - 2405MHz SET

Competition Rule Best of 3

Classification ☒ 1:1 ☐ Team 5:3 ☐ PARA

Round Set 3 Round Gam-jeom Limit 5

Match Time 2:00 Video Quota 1

Match Time 2 Win by Point Gap 12

Rest Time 1:00 Win by Point Ceiling 40

Key-Shi Time 1:00

Equipment

PSS Scoring Body + Head Judge Number None

e-Socks Use Judge Box Button Point

Protector Point Top 3 Middle 2 Bottom 1

Trunk 2 Head 3

☒ PSS Auto Off ☒ Use Vibration ☐ 1280x720 Pixels

Use Sound Effect

Okay Close

TKDScoring V2.0.10b Beta

1 2 3

GAM-JEOM 0

| | R1 | R2 | R3 | G | Total |
|-----------|----|----|----|---|-------|
| Deuk-Jeom | 0 | 0 | 0 | 0 | 0 |
| Gam-Jeom | 0 | 0 | 0 | 0 | 0 |

SEQ ROUND POINT DETAIL

Test Injury C Reject + H Reject + Result

TKDScoring V2.0.10b Beta

100 00 00

GAM-JEOM 0

| G | Total | Final | IVR |
|---|-------|-------|-----|
| 0 | 0 | 0 | 1 |
| 0 | 0 | 0 | 1 |

DETAIL TIME

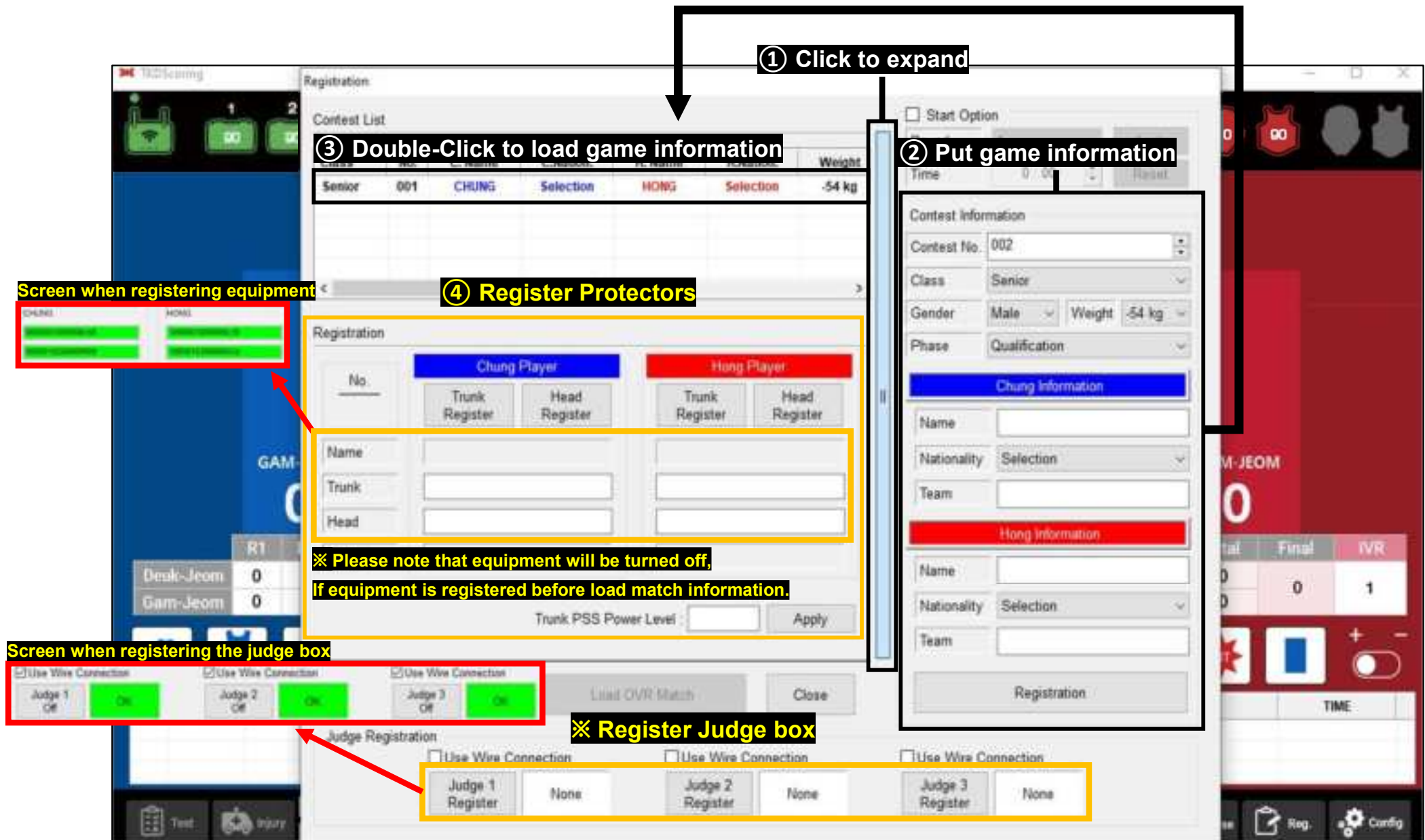
Reverse Reg. Config

① Individual and team events are selected and set

② Setting the rules of the match

③ Set PSS usage and number of judges

04. Enter athlete information and generate a match



① Click to expand

② Put game information

③ Double-Click to load game information

④ Register Protectors

Screen when registering equipment

Registration

| No. | CHUNG | Selection | HONG | Selection | Weight |
|--------|-------|-----------|------|-----------|--------|
| Senior | 001 | | | | -54 kg |

Registration

Chung Player

Hong Player

Name

Trunk

Head

Trunk Register

Head Register

Trunk PSS Power Level

Apply

※ Please note that equipment will be turned off, if equipment is registered before load match information.

Screen when registering the judge box

Judge 1 Off

Judge 2 Off

Judge 3 Off

Judge Registration

Judge 1 Register

None

Judge 2 Register

None

Judge 3 Register

None

Registration

Contest information

Contest No. 002

Class Senior

Gender Male

Weight -54 kg

Phase Qualification

Chung information

Name

Nationality Selection

Team

Hong information

Name

Nationality Selection

Team

Registration

Final

IVR

0

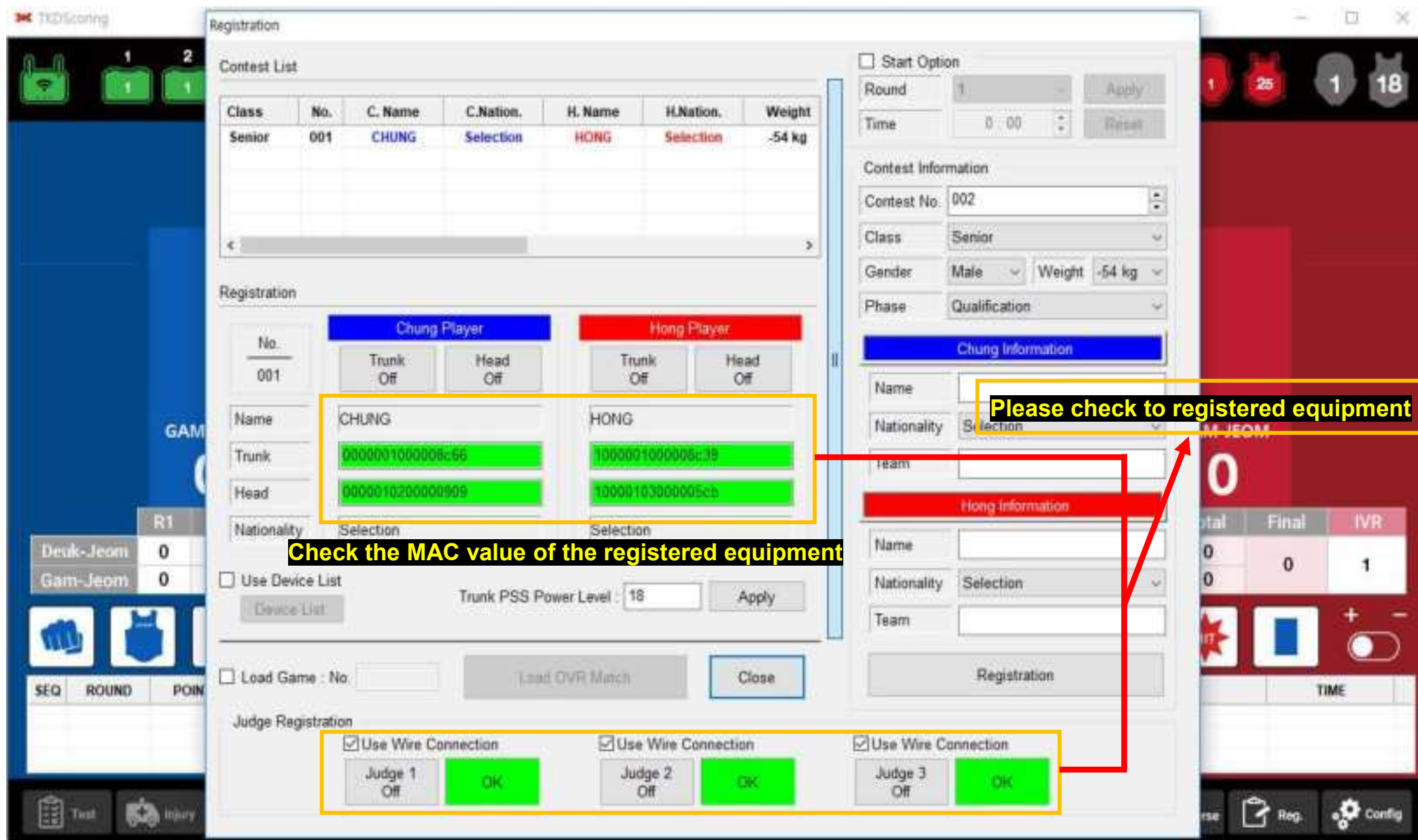
1

TIME

Reg.

Config

05. Connecting the equipment



Contest List

| Class | No. | C. Name | C.Nation. | H. Name | H.Nation. | Weight |
|--------|-----|---------|-----------|---------|-----------|--------|
| Senior | 001 | CHUNG | Selection | HONG | Selection | -54 kg |

Registration

Chung Player

No. 001

Trunk: Off Head: Off

Name: CHUNG

Trunk: 0000001000008c66

Head: 0000010200000909

Nationality: Selection

Hong Player

No. 001

Trunk: Off Head: Off

Name: HONG

Trunk: 1000001000008c39

Head: 10000103000005cb

Nationality: Selection

Chung Information

Name:

Nationality: Selection

Team:

Hong Information

Name:

Nationality: Selection

Team:

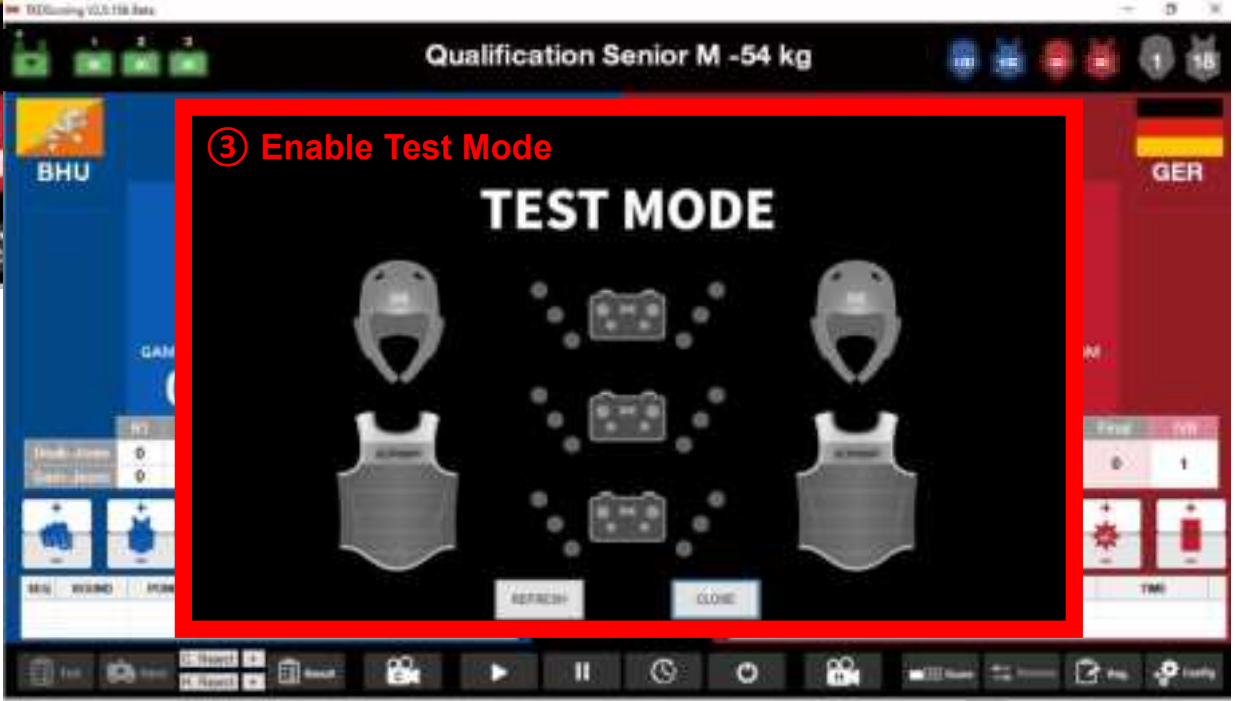
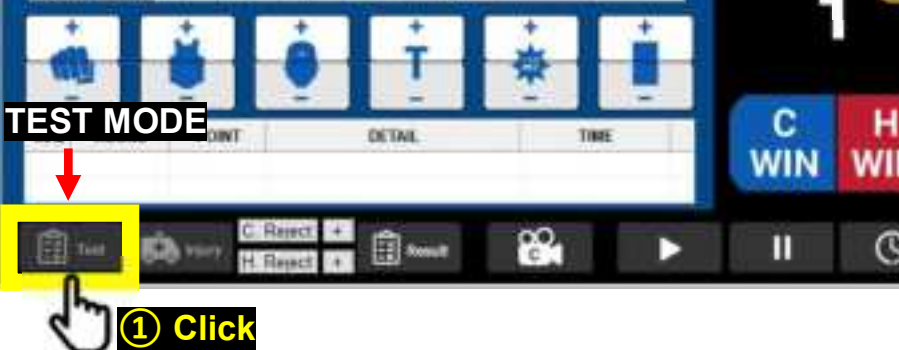
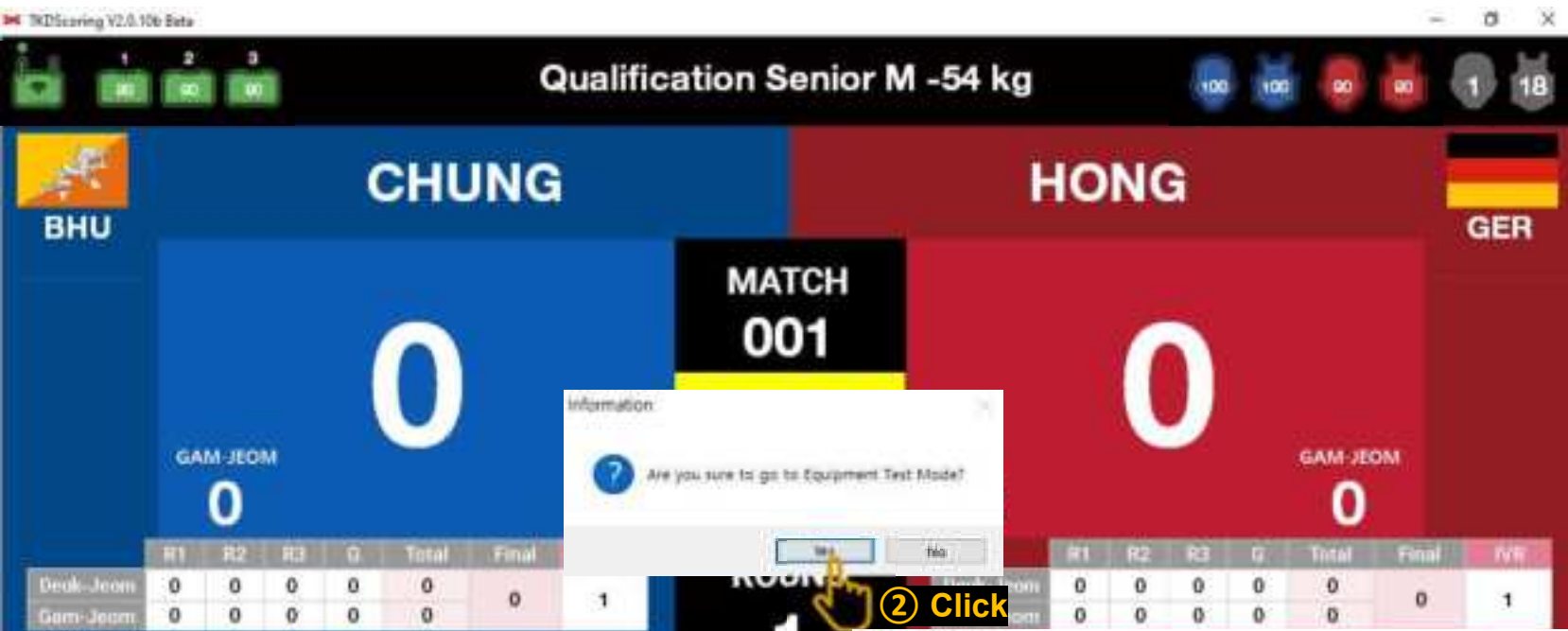
Judge Registration

☒ Use Wire Connection ☒ Use Wire Connection ☒ Use Wire Connection

Judge 1 Off OK Judge 2 Off OK Judge 3 Off OK

Callout Box: Please check to registered equipment

06. Running test mode



07. Use of Hot keys

TKDScore V2.0.10b Beta

Qualification Senior M -54 kg

CHUNG (BHU) vs **HONG** (GER)

GAM-JEOM 0

| | R1 | R2 | R3 | G | Total | Final | IV |
|-----------|----|----|----|---|-------|-------|----|
| Deuk-Jeom | 0 | 0 | 0 | 0 | 0 | 0 | 1 |
| Gam-Jeom | 0 | 0 | 0 | 0 | 0 | 0 | 1 |

HOT KEY

- Start/Stop** (Space bar)
- Start/Stop** (Up Arrow)
- CHUNG Gam-Jeom** (Left Arrow)
- Kye-Shi** (Down Arrow)
- HONG Gam-Jeom** (Right Arrow)

C WIN **H WIN**

Test Injury C. Reject H. Reject Result

Score Reverse Reg. Config

08. Types of icons by score

✖ Remark

- If you press the icon without pausing the match, no points are added or removed.
- Pause the Match and click the icon to add or remove points.

TKDScore V2.0.10b Beta

Education Senior M -54 kg

HONG

GER

MATCH 001

2:00

ROUND 1

C WIN H WIN

GAM-JEOM

0

| | R1 | R2 | R3 | G | Total | Final | IVR |
|-----------|----|----|----|---|-------|-------|-----|
| Deuk-Jeom | 0 | 0 | 0 | 0 | 0 | 0 | 1 |
| Gam-Jeom | 0 | 0 | 0 | 0 | 0 | 0 | 0 |

Trunk Point Tech Point Gam-joem Point

Punch Point Head Point Hit Point

GAM-JEOM

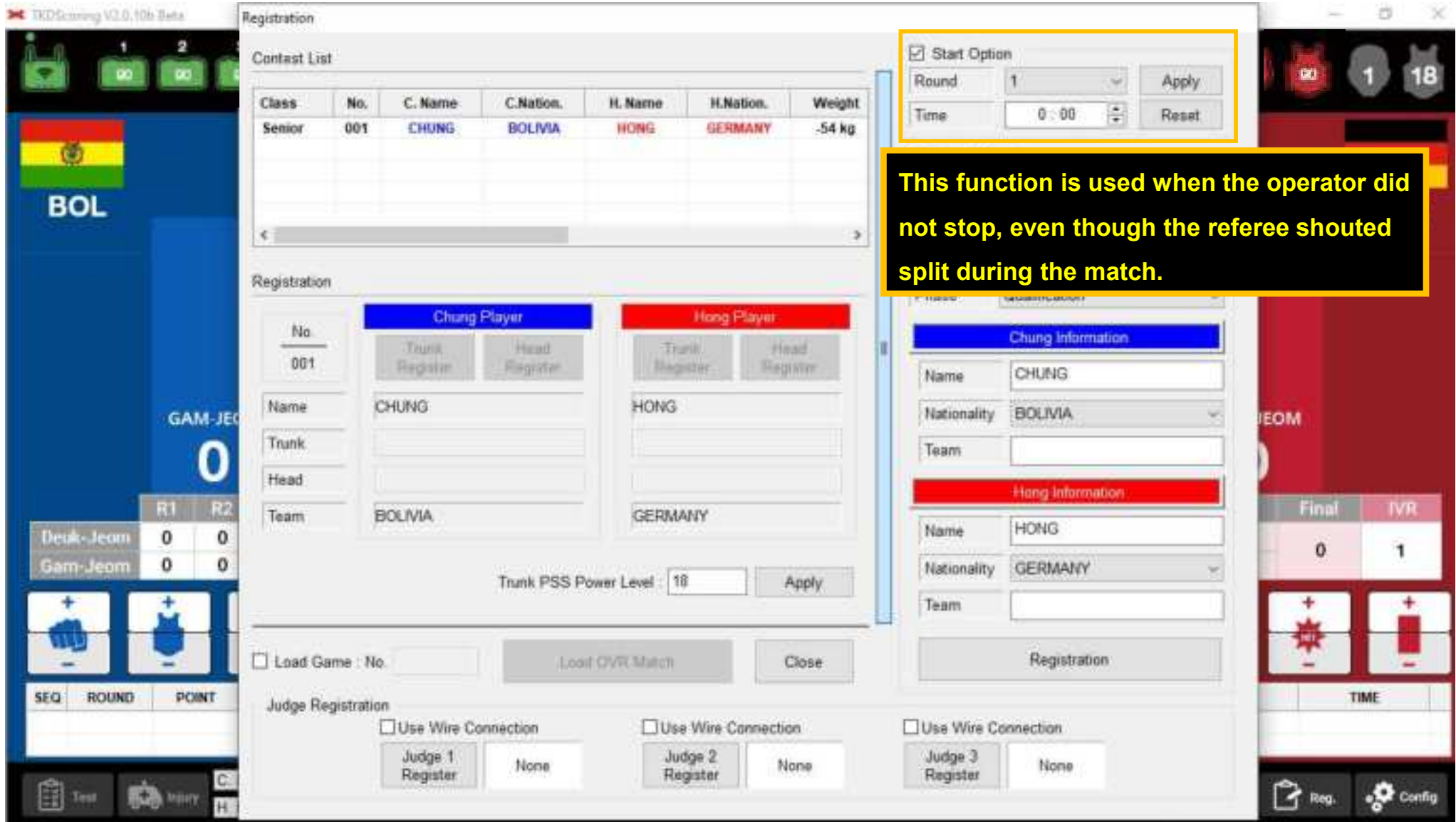
0

| | R1 | R2 | R3 | G | Total | Final | IVR |
|-----------|----|----|----|---|-------|-------|-----|
| Deuk-Jeom | 0 | 0 | 0 | 0 | 0 | 0 | 0 |
| Gam-Jeom | 0 | 0 | 0 | 0 | 0 | 0 | 0 |

Trunk Point Tech Point Gam-joem Point

Punch Point Head Point Hit Point

09. Start option



The screenshot displays the TKDScoring V3.0.10b Beta software interface. A yellow box highlights the 'Start Option' dialog box, which is used to set the round and time for a match. The dialog box contains the following fields:

- ☒ Start Option
- Round: 1 (dropdown menu)
- Time: 0:00 (time input field)
- Buttons: Apply, Reset

A yellow text box with a black background and yellow text explains the function:

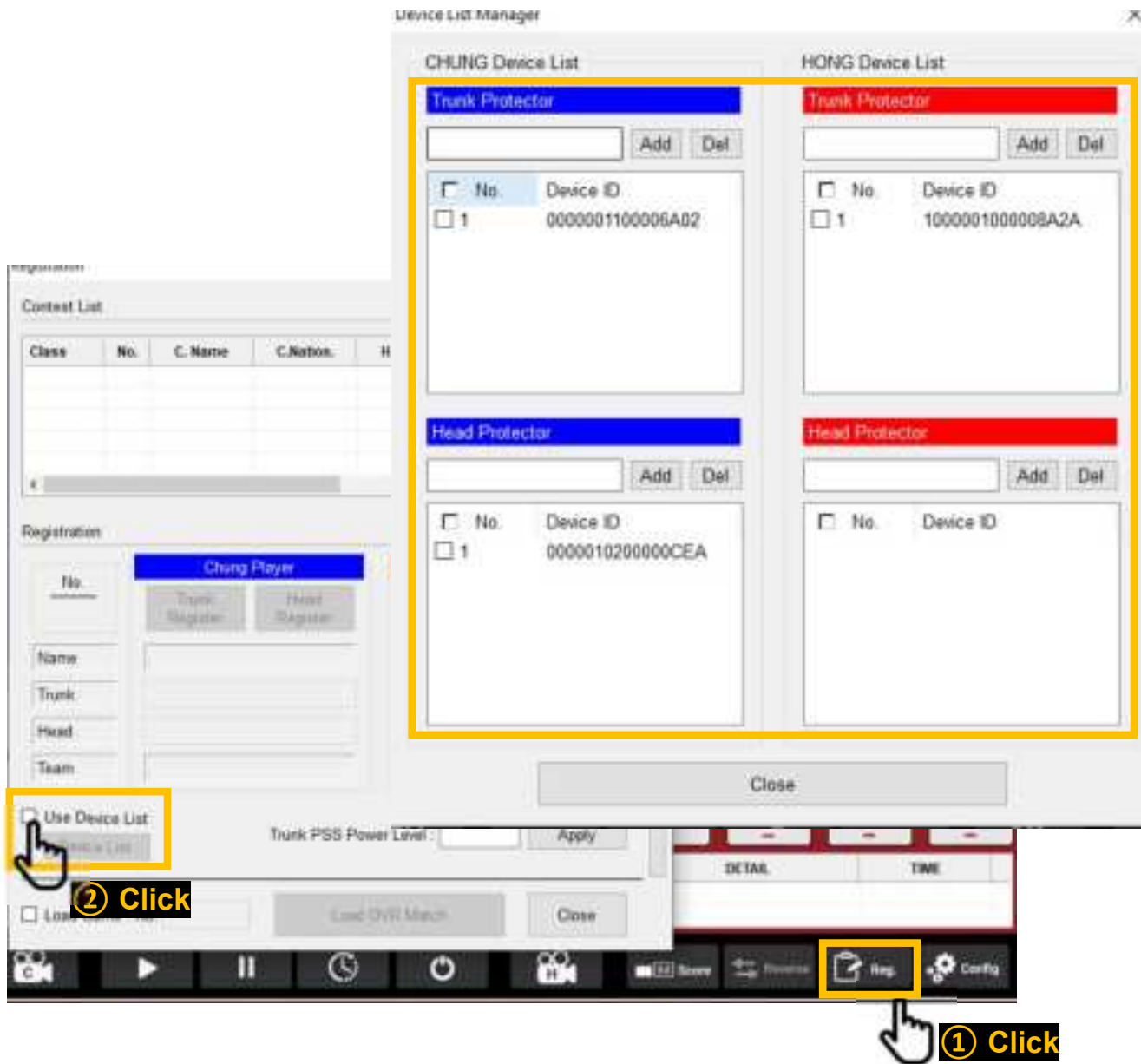
This function is used when the operator did not stop, even though the referee shouted split during the match.

The background interface shows the 'Registration' window with a 'Contest List' table and player registration details for 'Chung Player' (BOLIVIA) and 'Hong Player' (GERMANY). The 'Contest List' table is as follows:

| Class | No. | C. Name | C. Nation | H. Name | H. Nation | Weight |
|--------|-----|---------|-----------|---------|-----------|--------|
| Senior | 001 | CHUNG | BOLIVIA | HONG | GERMANY | -54 kg |

The interface also includes a 'Trunk PSS Power Level' set to 18, a 'Load Game' section, and a 'Judge Registration' section with checkboxes for 'Use Wire Connection' and buttons for 'Judge 1 Register', 'Judge 2 Register', and 'Judge 3 Register'.

10. Device list



✗ Reason to use device list

- If the equipment is registered in the court operation program by taking the MAC value of the equipment with a barcode scanner, the equipment can be registered without overlapping another court.
- If multiple courts are operated the equipment might be cross-registered to prevent this we use the device list

11. Instant video replay

- Make sure to select 4 of the section and click the apply button
- Points are not added or removed if you do not select all four of the section



Qualification Senior M -54 kg

CHUNG : IVR REQUEST

Player: BLUE, RED

Points: Gam-Jeom

Action: ADD [+], REMOVE [-], ACCEPT [O], REJECT [X]

Result: Appeal to Reject by Referee

Apply, Close

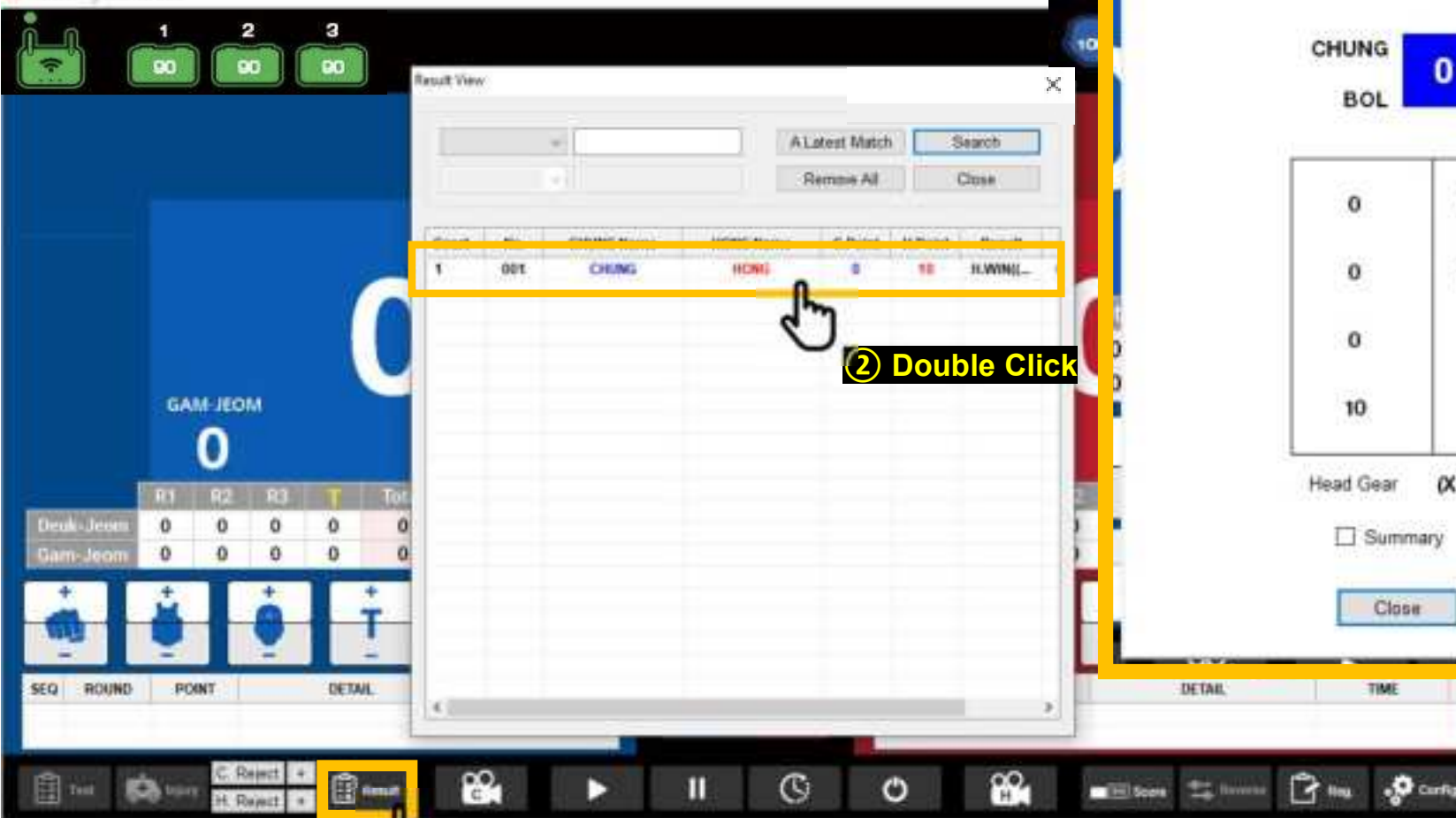
Video replay

Remove the number of times, Add the Number of times

① Click

12. The result of the match

WDS Version V2.0.10k Beta



Result View

1 001 CHUNG HONG 0 10 H.WIN...

② Double Click

① Click

MATCH RESULT

Senior -54 kg (Male)

Match No.001

2022-08-14 18:41

H.WIN((PTF) Final Score)

CHUNG 0 VS 10 HONG
BOL GER

| | | |
|----|----------------|---|
| 0 | Point of Head | 0 |
| 0 | Point of Trunk | 0 |
| 0 | Point | 0 |
| 10 | Gam-Jeom | 0 |

Head Gear (X)

e-Socks (O)

☐ Summary

☒ Include All

Close

Print

③ click to print
competition
results

13. Check round lead and the previous round, the winner

TKDScore V2.0.14h Simulation

Qualification Senior M -54 kg

1 2 3

CHUNG HONG

ROU BUL

Hit Count 0 0

GAM-JEOM 0 0

2:00

Time out

ROUND 2

C WIN H WIN

Simulation

current round lead and score

Score marks and current round lead

previous round winner

| | R1 | R2 | R3 | T | Total | Final | IVR |
|-----------|----|----|----|---|-------|-------|-----|
| Desk-Jeom | 3 | 3 | 0 | 0 | 6 | 6 | 1 |
| Gam-Jeom | 0 | 0 | 0 | 0 | 0 | 0 | 0 |

| | R1 | R2 | R3 | T | Total | Final | IVR |
|-----------|----|----|----|---|-------|-------|-----|
| Desk-Jeom | 0 | 0 | 0 | 0 | 0 | 0 | 1 |
| Gam-Jeom | 0 | 0 | 0 | 0 | 0 | 0 | 0 |

| SEQ | ROUND | POINT | DETAIL | TIME |
|-----|-------|-------|-----------|------|
| 1 | 1 | (+)3 | Head Kick | 2:00 |
| 2 | 2 | (+)3 | Head Kick | 2:00 |

| SEQ | ROUND | POINT | DETAIL | TIME |
|-----|-------|-------|--------|------|
|-----|-------|-------|--------|------|

Test Injury C. Reject H. Reject Result

Score Reverse Reg. Config

14. Check the current score and the winner of the previous round



WORLD TAEKWONDO KPNP Qualification Senior -54 kg

1 18

CHUNG HONG

ROU BUL

Score marks and current round lead

3

2:00

Time out

previous round winner

GAM-JEOM #WON HITS

0 1 0

ROUND 2

HITS #WON GAM-JEOM

0 0 0

| CHUNG | MATCH | HONG |
|-------------|-------|-------------|
| 3 | 006 | 0 |
| 2:00 | | |
| Time out | | |
| ROUND 2 | | |
| GAM-JEOM: 0 | | GAM-JEOM: 0 |
| #WON: 1 | | #WON: 0 |
| HITS: 0 | | HITS: 0 |

15. Finish the match after select winner

TKDScore V2.0.10b Beta

Qualification Senior M -54 kg

CHUNG (BOL) vs **HONG** (GER)

MATCH 001
Time out 0:50
ROUND 3

Legend

- Round winner
- Match winner

CHUNG (BOL) Scores:

| R1 | R2 | R3 | T | Total | Final | IVR |
|----|----|----|---|-------|-------|-----|
| 5 | 0 | 5 | 0 | 10 | 10 | 1 |

HONG (GER) Scores:

| R1 | R2 | R3 | T | Total | Final | IVR |
|----|----|----|---|-------|-------|-----|
| 1 | 5 | 0 | 0 | 6 | 6 | 1 |

Match Winner: C WIN

16. UNEXPECTED SITUATION (1)

01

KPNP
Keep Passion
Never Pause

If the device is not registered

verify that the barcode number is correct → turn on the device → press the Register button of the device → and click the Register button on the program



Register

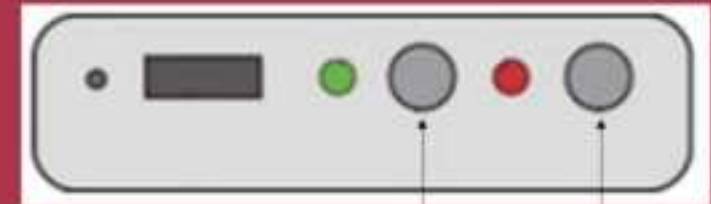
Turn on

16. AN UNEXPECTED SITUATION (2)

02

When the equipment is briefly turned off

ⓐ call the athlete → ⓑ to make sure that the equipment is turned off or on → ⓒ turn on the device → ⓓ press the Register button on the device → ⓔ and then click the Register button on the program



ⓓ
Register

ⓒ
Turn on

16. AN UNEXPECTED SITUATION (3)

03

If the game is over due to a score difference or a loss of points, but the round victory is not pressed

Click the Register Program button, change the time to 1-second, press the Save button, close the window, and press the Start button to force the end of the round



KPNP
Keep Passion
Never Pause



17. FCC WARNING



This device complies with part 15 of the FCC Rules. Operation is subject to the following two conditions: (1) This device may not cause harmful interference, and (2) this device must accept any interference received, including interference that may cause undesired operation.

Note: This equipment has been tested and found to comply with the limits for a Class B digital device, pursuant to part 15 of the FCC Rules. These limits are designed to provide reasonable protection against harmful interference in a residential installation. This equipment generates, uses and can radiate radio frequency energy and, if not installed and used in accordance with the instructions, may cause harmful interference to radio communications. However, there is no guarantee that interference will not occur in a particular installation. If this equipment does cause harmful interference to radio or television reception, which can be determined by turning the equipment off and on, the user is encouraged to try to correct the interference by one or more of the following measures:

- Reorient or relocate the receiving antenna.
- Increase the separation between the equipment and receiver.
- Connect the equipment into an outlet on a circuit different from that to which the receiver is connected.
- Consult the dealer or an experienced radio/TV technician for help.

Note: The Grantee is not responsible for any changes or modifications not expressly approved by the party responsible for compliance. such modifications could void the user's authority to operate the equipment.

The device has been evaluated to meet general RF exposure requirement.

This equipment complies with FCC's RF radiation exposure limits set forth for an uncontrolled environment. This device and its antenna(s) must not be co-located or conjunction with any other antenna or transmitter.





THANK YOU!