

FCC Statement

This device complies with part 15 of FCC Rules. Operation is subject to the following two conditions: (1) this device may not cause harmful interference, and (2) this device must accept any interference received, including interference that may cause undesired operation. This equipment has been tested and found to comply with the limits for a Class B digital device, pursuant to part 15 of FCC Rules. These limits are designed to provide reasonable protection against harmful interference when the equipment is operated in a residential installation. This equipment generates, uses, and can radiate radio frequency energy and, if not installed and used in accordance with the instruction guide, may cause harmful interference to radio communications. However, there is no guarantee that interference will not occur in a particular installation. If this equipment does cause harmful interference to radio or television reception, which can be determined by turning the equipment off and on, the user is encouraged to try to correct the interference by one or more of the following measures:

- Reorient or relocate the receiving antenna.
- Increase the separation between the equipment and the receiver.
- Connect the equipment into an outlet on a circuit different from that to which the receiver is connected.
- Consult a service representative for help.

Properly shielded and grounded cables and connectors must be used in order to comply with FCC emission limits. LifeWorks is not responsible for any radio or television interference caused by using other than recommended cables and connectors or by unauthorized changes or modifications to this equipment. Unauthorized changes or modifications could void the user's authority to operate the equipment.

Responsible party:
LifeWorks Technology Group LLC
330 7th Ave, New York, NY 10018
Tested To Comply With FCC Standards
FOR HOME OR OFFICE USE

Warning Improper setup, use and care of this product can increase the risk of serious injury death or device damage. Read and keep this guide and all other printed guides for future reference. For updated guides or replacements go to gaffeworks.com

Do Not Attempt Repairs Do not attempt to take apart, repair, replace, service or modify the device(s). Doing so may risk electric shock or other hazard. Evidence of any attempt to open or modify the device, including any peeling, puncture or removal of labels, will void the Limited Lifetime Warranty.

Printed in China
© 2019 LifeWorks Technology Group LLC.
Win is a registered trademark of LifeWorks Technology Group.
Windows, 2000, XP, Vista, Windows 7, and Windows 8 are registered trademarks or trademarks of Microsoft Corporation in the United States and/or other countries.
Mac is a trademark of Apple Inc., registered in the U.S. and other countries.
All other brands and logos are trademarks of their respective companies.

technical support
for technical support please visit
www.iHomeCases.com/warranty
or call (877) LIFE-540 (877-543-3540)

lifetime warranty
for warranty information, please visit
www.iHomeCases.com/warranty

for model number(s)
IH-K2050

document version number 100413-0

Mouse Devices: Health Warning

Use of a mouse may be linked to serious injuries or disorders. As in many activities, when using a computer you may experience occasional discomfort in various parts of your body. However, do not ignore symptoms such as persistent or recurring discomfort, pain, throbbing, aching, tingling, numbness, burning sensation or stiffness. Promptly see a qualified doctor, even if symptoms occur when you are not working at your computer.

There is general consensus among researchers that there may be many factors linked to the occurrence of these symptoms, including overall health, stress, physical condition and how a person positions and uses his or her body during work and other activities (including the use of a keyboard or mouse). The amount of time a person spends performing an activity may also be a factor.

If you have questions about how your own lifestyle, activities or physical condition may be related to these symptoms, see a qualified health professional.

Battery-Powered Devices

Use of rechargeable or disposable batteries in an improper manner may result in battery fluid leakage, overheating or explosion. Battery fluid is corrosive, may be toxic, can cause skin and eye burns, and is harmful if swallowed.
Radio Frequency Technical Specifications: 2.4 GHz Devices
Non-specific short range device, RF output power meets all SRD requirements.



Congratulations on the purchase of your new
iHome wireless desktop keyboard
This product comes with a limited lifetime warranty.

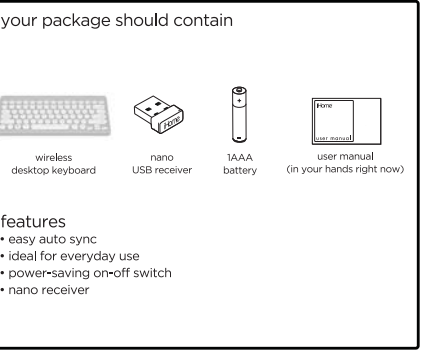
Before using your product, please thoroughly read and follow the instructions inside this manual.

If you still need help, see the back page for other support options.

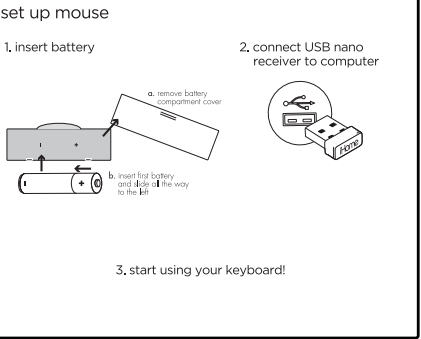
If you want to know more about our products, visit us online at
www.golifeworks.com

system requirements

- Mac OS X v10.0 or later
- Windows® 2000, XP, Vista or Windows 7, Windows 8, Windows 10®
- USB port



- features**
- easy auto sync
 - ideal for everyday use
 - power-saving on-off switch
 - nano receiver



situation	try this
keyboard does not work	<ul style="list-style-type: none">• Ensure that the keyboard is turned on.• Ensure the USB nano receiver is connected to your computer. If it is, try connecting it to a different USB port.• Ensure that the batteries are charged and inserted correctly.• Restart your computer.

NOTE: This equipment has been tested and found to comply with the limits for a Class B digital device, pursuant to part 15 of the FCC Rules. These limits are designed to provide reasonable protection against harmful interference in a residential installation. This equipment generates uses and can radiate radio frequency energy and, if not installed and used in accordance with the instructions, may cause harmful interference to radio communications. However, there is no guarantee that interference will not occur in a particular installation. If this equipment does cause harmful interference to radio or television reception, which can be determined by turning the equipment off and on, the user is encouraged to try to correct the interference by one or more of the following measures:

- Reorient or relocate the receiving antenna.
- Increase the separation between the equipment and receiver.
- Connect the equipment into an outlet on a circuit different from that to which the receiver is connected.
- Consult the dealer or an experienced radio/TV technician for help

Changes or modifications not expressly approved by the party responsible for compliance could void the user's authority to operate the equipment. This device complies with Part 15 of the FCC Rules. Operation is subject to the following two conditions:

(1) this device may not cause harmful interference, and
(2) this device must accept any interference received, including interference that may cause undesired operation.

展开尺寸：254X190mm
单黑双面印

展开尺寸：254X190mm
单黑双面印