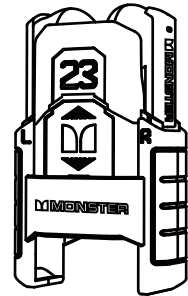


英



## Monster Airmars XKT23

True wireless Bluetooth headphone instruction manual

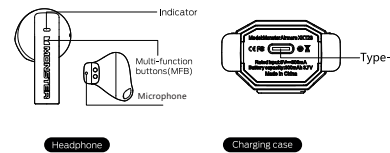
### Product parameters

- Bluetooth version ----- V5.3
- Transmission distance ----- 10m
- Driver diameter -----  $\Phi$ 13mm
- Driver impedance -----  $16\Omega \pm 15\%$
- Sensitivity -----  $-106 \pm 3\text{dB}$
- Frequency response ----- 20Hz-20kHz
- Battery capacity(Charging case) ----- 280mAh 3.7V
- Battery capacity(Headphone) ----- 30mAh 3.7V
- Charging time(Charging case) -----  $\approx 1.5$  hours
- Music playtime(Headphone) -----  $\approx 4$  hours
- Music playtime with charging case -----  $\approx 20$  hours

### Product Schematic Description

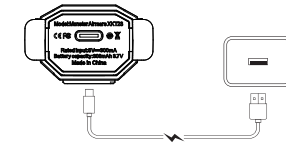
	Headphone*2		Charging case*1
	Instructions Manual*1		Type-C Charging cable*1

### Product Schematic Description



### Charge the charging case

Connect the charging case to the 5V power adapter with Type-C charging cable.



Rated input: 5V $\approx$ 30mA (Headphone) Rated input: 5V $\approx$ 300mA (Charging case)

**TIPS:** When the charging box cover is closed, the RGB indicator light of the charging box flashes red, please charge the charging box.

### Indicator guide

Mode	Describe	Sound prompt
Power On	The earphone ice blue indicator flashes 3 times	"Power on"
Power Off	The headphone ice blue indicator red light is solid for 1 second	"Power off"
Pairing	The red ice blue indicator lights of the left and right earphones flash alternately	"Pairing"
Connected	The headphones LED indicator is off.	"Connected"
Disconnected	The left and right earbuds flash alternately red, ice, and blue	"Disconnected"
Low Battery	The headphone red indicator flashes	"Battery low"
Headphones placed in charging case	The headphones are always red and full and off	—
Charging case low power	The charging case RGB indicator flashes red	—
Charging case charged	The charging case RGB indicator flashes in seven color cycles	—
Charging case fully charged	The charging case indicator is off	—

### Product operating instructions

#### 1. Power on

Method 1: Open the charging case, the headphones will turn on automatically.  
Method 2: Long touch the MF button of the headphones for 3s to turn on the headphones.

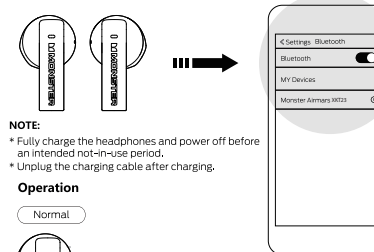
#### 2. Power off

Method 1: Put the headphones into the charging case and close the cover.  
Method 2: After disconnected from the Bluetooth device for 3 minutes.

#### 3. Pairing

Step one: Open the charging case, the headphones will start pairing automatically.  
Step two: Search and click for "Monster Airmars XKT23" on the Bluetooth list of the smart device, and when connection is successful, "Connected" will be heard.

\* Headphones will try reconnecting to the device within 3 minutes when connection is lost.

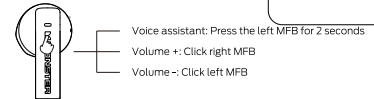


#### NOTE:

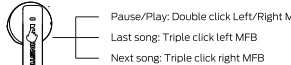
- \* Fully charge the headphones and power off before an intended not-in-use period.
- \* Unplug the charging cable after charging.

#### Operation

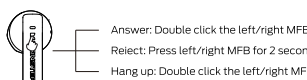
##### Normal



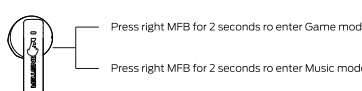
### Music playback



### Phone



### Game/Music switching : Device connected



### Restore factory settings

When you turn on the headphone, make sure it does not connect to any Bluetooth device, and click the MF button 5 times to clear the pairing record, then turn off the headphone.

### Precautions

- Headphones will turn on automatically (needless to press any button) pair and connect the device when the charging case is opened. After placing the headphones in the charging case, they will turn off and automatic charging will start when the cover is closed.
- Charging every 15 days will extend battery life when not in use often. Cleaning off dirt on the charging contacts by cotton swabs with alcohol will maintain a good contact for charging.
- Keep battery (battery pack) away from inflammables or excessive heat such as direct sunlight. Do not disassemble, hit, squeeze or fire. Medium. If severe swelling occurs, do not continue using. Do not place in high temperature environment. Do not use after soaking water.
- Intermittent is normal during playback for wireless products due to environmental factors, device brand, users' behavior, etc.

#### Warnings

- Do not use headphones at high volume for an extended period of time.
- Keep the headphones away from dust and water.
- Do not disassemble the headphones and accessories, otherwise warranty will be voided.
- Keep headphones away from any impact or vibration.
- Do not use any chemical solvents or cleaning agent on the headphones.

Name of the Parts	Hazardous Substances					
	Pb	Hg	Cd	Cr(VI)	PBB	PBDE
Housing	0	0	0	0	0	0
Loudspeakers	0	0	0	0	0	0
PCBA	X	0	0	0	0	0
Accessories	X	0	0	0	0	0

This table is compiled according to SJ/T 11364

0: Indicates that this hazardous substance contained in all of the homogeneous materials for this part is below the limit requirement in GB/T 26572.

X: Indicates that this hazardous substance contained in at least one of the homogeneous materials used for this part is above the limit requirement in GB/T 26572.

### FCC Statement

This equipment has been tested and found to comply with the limits for a Class B digital device, pursuant to Part 15 of the FCC Rules. These limits are designed to provide reasonable protection against harmful interference in a residential installation. This equipment generates uses and can radiate radio frequency energy and, if not installed and used in accordance with the instructions, may cause harmful interference to radio communications. However, there is no guarantee that interference will not occur in a particular installation. If this equipment does cause harmful interference to radio or television reception, which can be determined by turning the equipment off and on, the user is encouraged to try to correct the interference by one or more of the following measures:

- Reorient or relocate the receiving antenna.
- Increase the separation between the equipment and receiver.
- Connect the equipment into an outlet on a circuit different from that to which the receiver is connected.
- Consult the dealer or an experienced radio/TV technician for help. This device complies with part 15 of the FCC Rules.

Operation is subject to the following two conditions:

- (1) This device may not cause harmful interference, and
- (2) this device must accept any interference received, including interference that may cause undesired operation. Changes or modifications not expressly approved by the party responsible for compliance could void the user's authority to operate the equipment.

The device has been evaluated to meet general RF exposure requirement. The device can be used in portable exposure condition without restriction

FCC ID: 2A8PV-QSMXKT23

Environment Friendly Use Period (EFUP)

This logo refers to the period (10 years) during which the hazardous substances in electronic and electrical products will not leak or mutate so that the use of these [substances] will not result in any severe environmental pollution, any bodily injury or damage to any assets.

### Warranty Service

Dear user, this warranty card is the proof of your future warranty application, please cooperate with the seller to fill it out and keep it for future use!

#### User info

User name		Email	
Contact number		Postal code	

#### Mailing address

#### Product information

Product name		Product number	
Product barcode / Serial number / Batch number			

#### Vendor information

Name			
Address			
Contact number		Postal code	
Sales date		Invoice number	
Remark			

