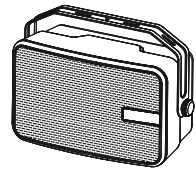


PRODUCT MANUAL



MZ-621
Wireless Networking Speaker

English
Product Manual

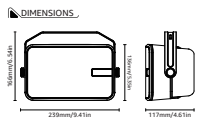
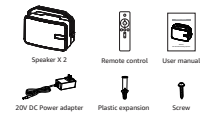
MZ-621
Wireless Networking Speaker

Thank you for buying this product. Please read all safety information and operation instruction before using the bluetooth speaker.

SAFETY INSTRUCTIONS

- Please read and follow this instruction.
- Please keep or use at room temperature.
- Please do not use this product near heat sources such as radiators, ethylene regulators, stoves or other heat generating instruments (including amplifiers).
- All types of malfunctions should be repaired by professional maintenance staff, disassembly without permission will void the warranty.

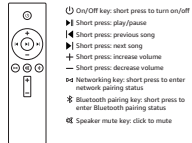
English
PACKAGE CONTENTS



English
PARAMETER

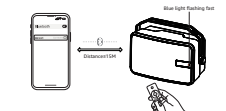
Bluetooth version:	5.3
Wireless distance:	≤113M
Input voltage:	DC 20V
Output power:	40W
THD:	<1%
Frequency range:	20Hz-20KHz
SNR:	>80dB
Waterproof level:	IPX5

SPEAKER CONTROL PANEL AND PORTS



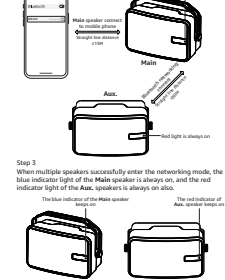
English
OPERATION INSTRUCTION

Step 1
Bluetooth connection with one speaker:
Power on the speaker via connect to the power supply, the blue indicator flashes. Turn on the mobile phone Bluetooth to search for "MZ-621" and connect with it.
(Note: If the red indicator flashes after the speaker powered on, short press Bluetooth pairing key "⌘" on the remote control to switch to the blue indicator flashing. Bluetooth can only be connected when the blue indicator flashes)



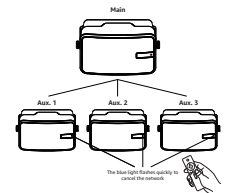
Step 2
Network pairing with Multiple speakers:
After finish with step 1, you have Bluetooth connected one speaker (Main) with your mobile phone, power on the other speaker(Aux.), and they will auto pair with the Main speaker when their indicator lights are in red.
(Note: If the indicator of Aux. speaker does not show red after they powered on, short press the remote control networking key "⌘" on the remote control to switch to red)

English
INSTALLATION DIAGRAM

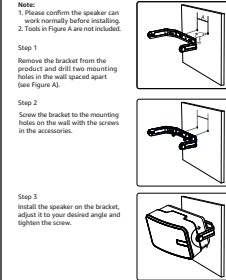


English
DISCONNECT NETWORK MODE METHOD

After successfully connecting multiple speakers, point the remote control at the Aux. speaker and press the Bluetooth pairing key "⌘" of the remote control until the blue light of the Aux. speaker blinks rapidly to exit the networking mode.
(NOTE: Press the networking key "⌘" again, the Aux. speaker will enter the networking mode again.)



English
INSTALLATION DIAGRAM



English
FCC Warning

This device complies with part 15 of the FCC rules. Operation is subject to the following two conditions:
(1) This device may not cause harmful interference, and
(2) This device must accept any interference received, including interference that may cause undesired operation.
Any changes or modifications not expressly approved by the party responsible for compliance could void the user's authority to operate the equipment.
NOTE:
This equipment has been tested and found to comply with the limits for a Class B digital device, pursuant to Part 15 of the FCC Rules. These limits are designed to provide reasonable protection against harmful interference in a residential installation. This equipment generates, uses and can radiate radio frequency energy and, if not installed and used in accordance with the instructions, may cause harmful interference to radio communications. However, there is no guarantee that interference will not occur in a particular installation.
If this equipment does cause harmful interference to radio or television reception, which can be determined by turning the equipment off and on, the user is encouraged to try to correct the interference by one or more of the following measures:
-- Reorient or relocate the receiving antenna.
-- Increase the separation between the equipment and receiver.
-- Connect the equipment into an outlet on a circuit different from that to which the receiver is connected.
-- Consult the dealer or an experienced radio/TV technician for help.
The device has been evaluated to meet general RF exposure requirement. The device can be used in portable exposure condition without restriction.