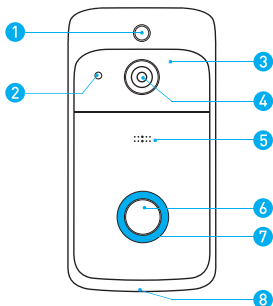
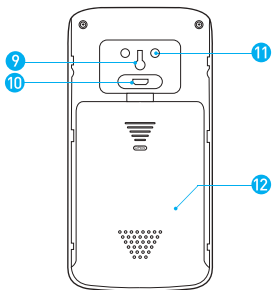


Video Doorbell V5

Features

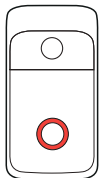


- | | |
|-----------------------------|----------------------------|
| 1. Motion Sensor | 5. Microphone |
| 2. Light Sensor | 6. Doorbell / Reset Button |
| 3. 6 Hidden Infrared Lights | 7. Indicator Light |
| 4. Wide-angle Lens | 8. Speaker |



- | | |
|----------------------|------------------|
| 9. Restart Button | 11. AC 8V~24C |
| 10. Micro USB Port | Power Interface |
| For Battery Charging | 12. Battery Door |

Indicator Light



Indicator light flashing RED

The device is reconnecting to the Wifi network. Please wait.

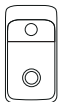


Indicator light flashing RED and BLUE alternately

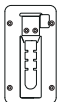


Low battery. Please recharge your batteries.

In the box



Video Doorbell



Mounting Bracket



User Manual



5 Anchors



5 Mounting Screws



Security Screw /
2 Hardwire Screws



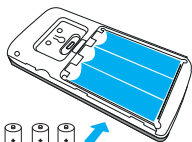
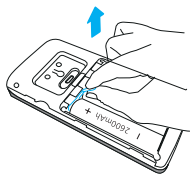
Chime
(Optional)



3 Batteries
(Optional)

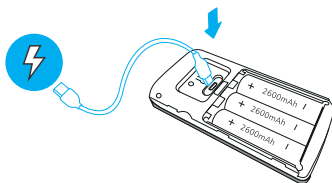
Charge batteries

1. Remove the battery tab.
2. Insert 18650 batteries positive end facing up, as shown on the device.



Rechargeable 18650 Battery

3. Fully charge batteries by connecting your device to a USB charger using a Micro USB cable. It takes about 14 hours for batteries to fully charge.

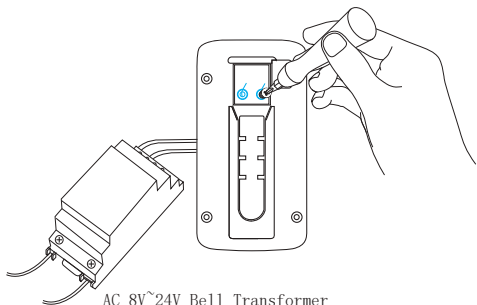


WARNING: Lots of events

If your device is capturing an excessive number of events every day, you might need to recharge your battery sooner. Plus, the battery is also drained each time you use the Live View to look or speak through your doorbell. To prevent excessive events, you can adjust your motion settings to a lower sensitivity.

Connect the wires (optional)

Connect the wires coming out of your wall to the screws on the back of your doorbell. Either wire can connect to either screw. The order doesn't matter.



Set up your Video Doorbell

Before You Start

1. Download and install Aiwit App.

Scan the QR code below or search for Aiwit on the Apple App Store or Google Play. Download and install the app.



Android / iOS
App Download



NOTICE:

To make sure every single feature works properly, please select **"YES"** for all permissions on your phone during the App installation.

2. Create an Aiwit account with your email address and activate the account by the email you received.




Set up your device in the Aiwit app.

To pair your device, follow the steps below and in-app instructions. Please turn on the Bluetooth of your mobile before starting to setup the device.

1. Open Aiwit App and log in.
2. To add your camera, select the + icon.



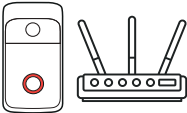
3. Select **Video Doorbell**. 4. Select the corresponding model with a bluetooth icon ().



5. Press and hold the **Doorbell Button** until the red light is flashing, then tap **Yes**.



6. Wait for Bluetooth connection, then enter your 2.4GHz Wi-Fi network and the Wi-Fi password, then tap **Next** (5GHz is not supported).



Notice: This doorbell only works with **2.4GHz WiFi**

7. If the doorbell connected with your WiFi successfully, a notification will appear on your screen as shown below. if it fails to connect with your WiFi, please repeat steps 5 to 6.

After setup, you will be able to check the live footage on your screen, and operate the doorbell with your phone.



NOTICE:

If you experience some issues during the app setup, try the following steps:

Check your WiFi password.

The most common issue during setup is an incorrect WiFi password, passwords are case-sensitive. Please double check your password.

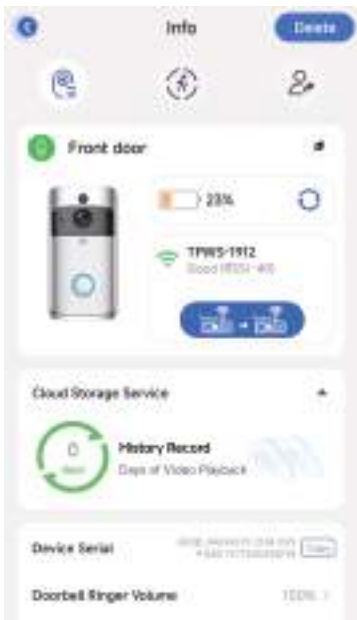
Reboot the router/modem.

If you have entered the correct password, but are still experiencing issue, try unplugging the power to your router/modem. wait for 30 seconds, then plug it back in and turn it on. proceed to setup again in Aiwit app.

Install your Video Doorbell

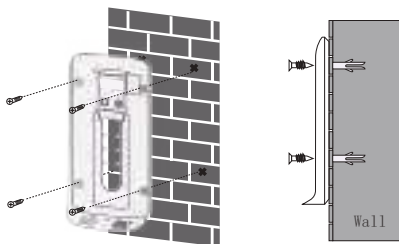
Before You Start Installing

Select the location where you need to install the camera, take the camera and the phone to the location, enter into the information interface to check if the WiFi signal at the location is good. it is recommended to install the camera in a location with good WiFi signal for smooth camera operation.

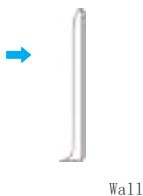


Mark drill holes and use a bit to drill holes in your wall. Insert anchors and secure your doorbell with a security screw and mounting screws.

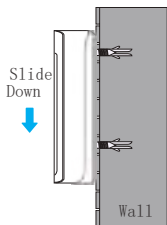
Step 1



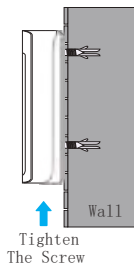
Step 2



Step 3

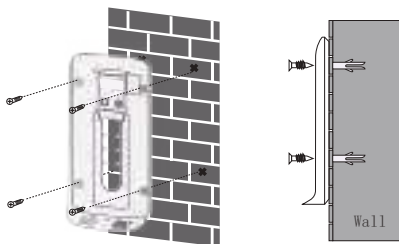


Step 4

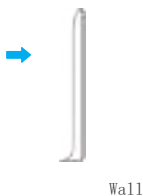


Mark drill holes and use a bit to drill holes in your wall. Insert anchors and secure your doorbell with a security screw and mounting screws.

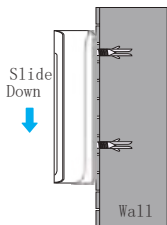
Step 1



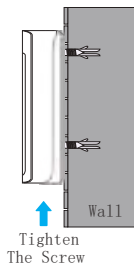
Step 2



Step 3



Step 4



Frequently asked questions

Where are my videos saved?

We provide cyclic cloud storage for you.

How to RESET the doorbell

Press and hold the Doorbell Button for 8 seconds. Then follow the in-app instructions to finish your Wi-Fi setup.

How to share the device with my family

Open the Aiwit app. From the home page, tap the Share icon. Tap Share via Email or Share via QR Code. You can share the device with up to 8 users.

Share via Email:

The new user has to download the Aiwit app and create an account with the same email address which the device owner has shared with. Log in to the account and you'll see the shared device.

Share via QR Code:

1. Open the Aiwit App on a new user's smartphone.
2. From the home page, tap +.
3. Tap QR Code Sharing, then scan the QR code the device owner generated before.
4. You will share successful, then tap Confirm.

How many users can view the video at the same time?

Up to 3 users may view the video feed, but only 1 user can use the direct intercom. Both iOS and Android are compatible.

Why is my Wi-Fi signal poor on my device?

Your device may be too far away from your wireless router or you may have some obstructions in between that reduce signal strength. You might try repositioning your router or getting a signal extender/repeater for your wireless router.

Is 5GHz Wi-Fi supported?

No. Only 2.4GHz Wi-Fi is supported.

How to adjust Motion Detection Sensitivity

From the home page, tap the Motion Detection icon.

Motion Detection Sensitivity

- Fast: Records and notifies you about every motion.
Shortest battery life.
- Medium: Records and notifies you about motion less often. Standard battery life.
- Slow: Records and notifies you about motion even less often. Maximum battery life.

How to enable Notifications on my phone

To do this, you need to give permission for the Aiwit app to access to your microphone and enable notifications. Follow these steps to enable notifications.

1. Open Settings. Go to Aiwit app permissions and select Notifications.
2. Make sure all switches are on.

Set up your Wireless Chime (Optional)

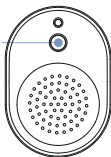
Connect the video doorbell to the doorbell chime, and get instant alert in your home when someone rings the doorbell. The chime plugs into any wall outlet, you can place it anywhere in the home.

NOTICE:

The video doorbell is only compatible with our wireless chime, and not compatible with traditional doorbell chimes. The wireless chime is optional. If it is not installed, doorbell notifications will still go directly to the Aiwit app.

The Basics

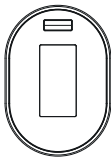
Pairing
Button



Front



Side

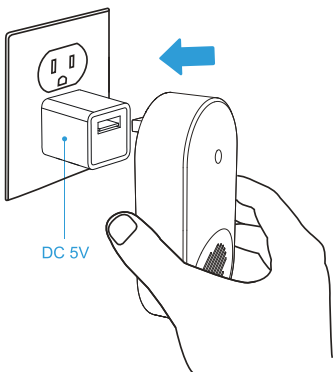
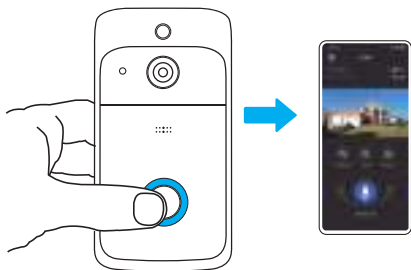


Back

Set up your chime with the video doorbell.

Step 1

Before the setup process, be sure your video doorbell has connected to your phone and plug in your chime.



Step 2

Press the Connect Button.



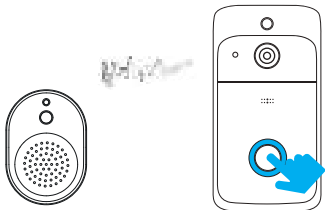
Step 3

Press the Doorbell Button to pair your doorbell to the chime.



Step 4

Press the Doorbell button again to verify the chime and doorbell work properly.



This device complies with part 15 of the FCC Rules. Operation is subject to the following two conditions: (1) This device may not cause harmful interference, and (2) this device must accept any interference received, including interference that may cause undesired operation.

Any Changes or modifications not expressly approved by the party responsible for compliance could void the user's authority to operate the equipment.

Note: This equipment has been tested and found to comply with the limits for a Class B digital device, pursuant to part 15 of the FCC Rules. These limits are designed to provide reasonable protection against harmful interference in a residential installation. This equipment generates uses and can radiate radio frequency energy and, if not installed and used in accordance with the instructions, may cause harmful interference to radio communications. However, there is no guarantee that interference will not occur in a particular installation. If this equipment does cause harmful interference to radio or television reception, which can be determined by turning the equipment off and on, the user is encouraged to try to correct the interference by one or more of the following measures:

- Reorient or relocate the receiving antenna.
- Increase the separation between the equipment and receiver.
- Connect the equipment into an outlet on a circuit different from that to which the receiver is connected.
- Consult the dealer or an experienced radio/TV technician for help.
- This equipment complies with FCC radiation exposure limits set forth for an uncontrolled environment. This equipment should be installed and operated with minimum distance 20cm between the radiator & your body.