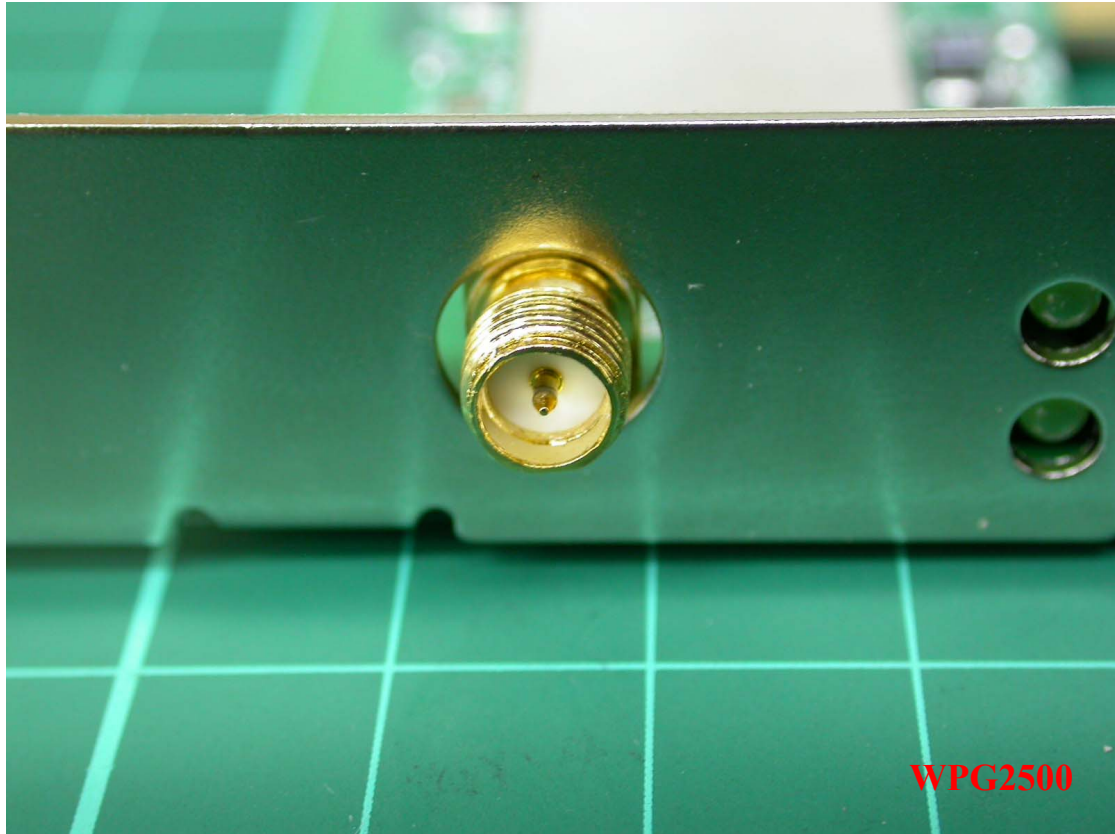


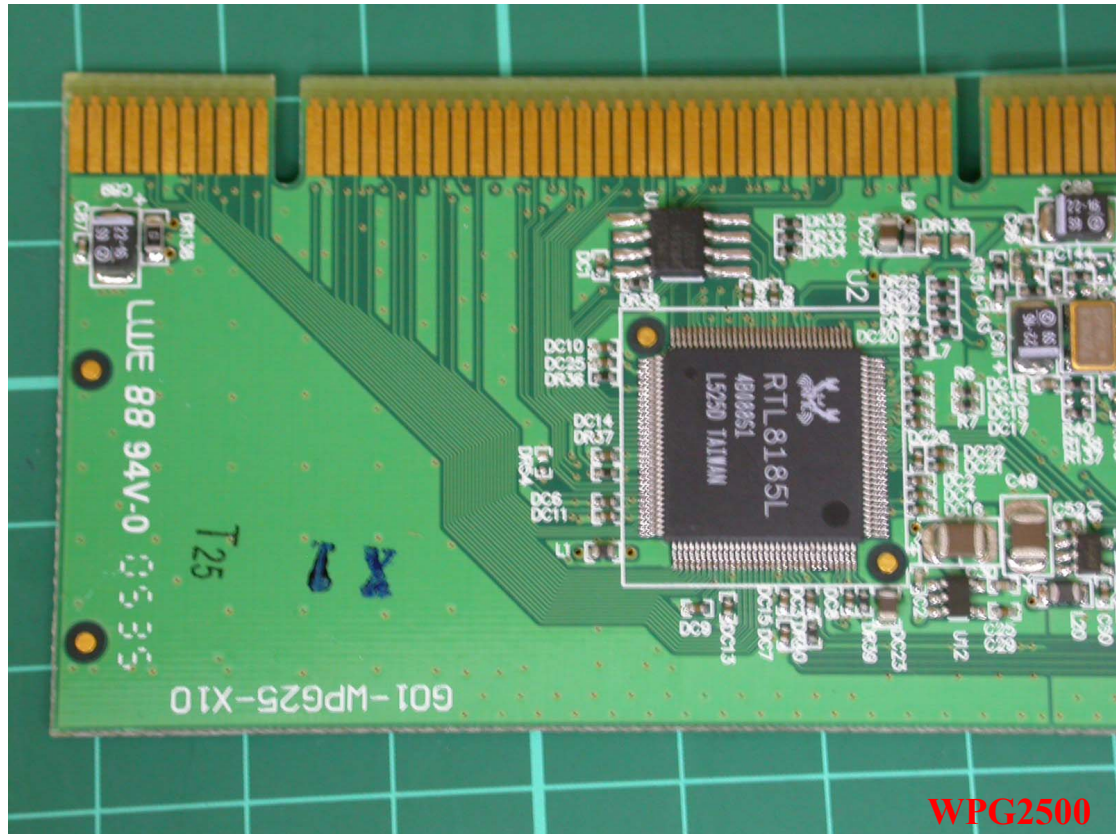
**Photo 1: Internal photo of EUT**

**Replaceable antenna**  
**Connector Type: Reverse SMA**



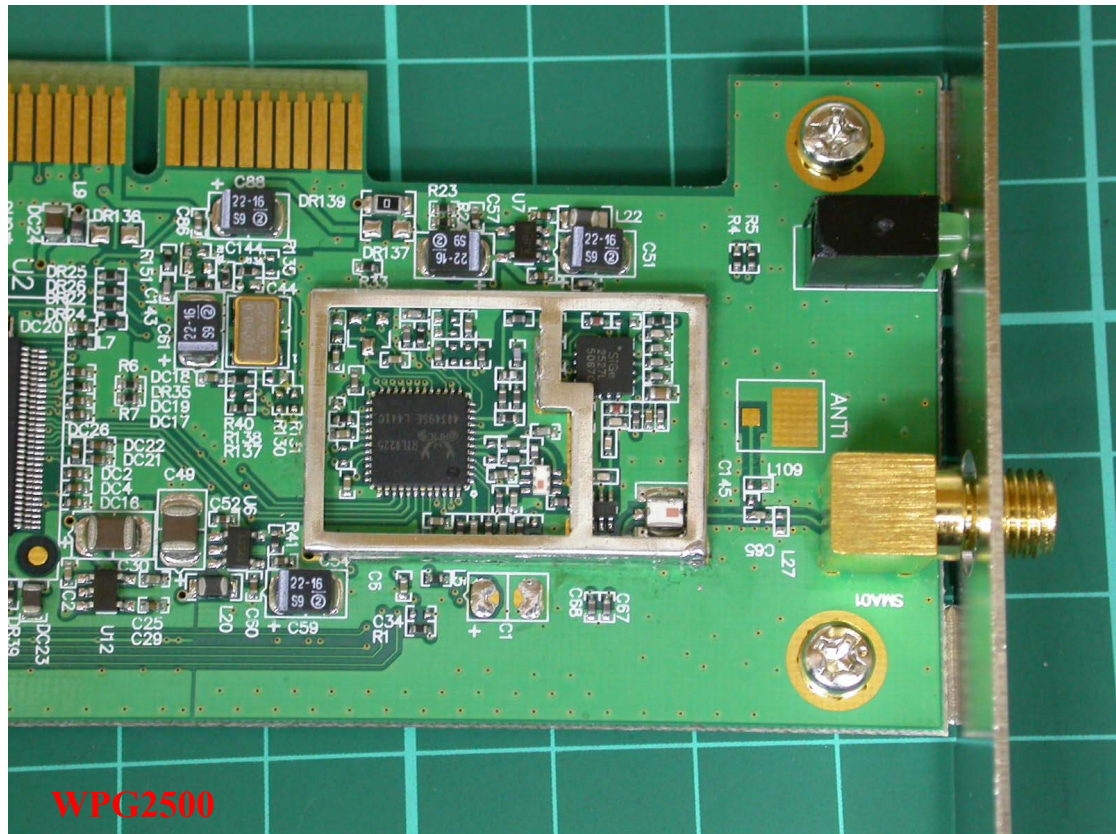
**Photo 2: Internal photo of EUT**

**Replaceable antenna**  
**Connector Type: Reverse SMA**



**Photo 3: Internal photo of EUT**

**Replaceable antenna**  
**Connector Type: Reverse SMA**





**Photo 4: Internal photo of EUT**

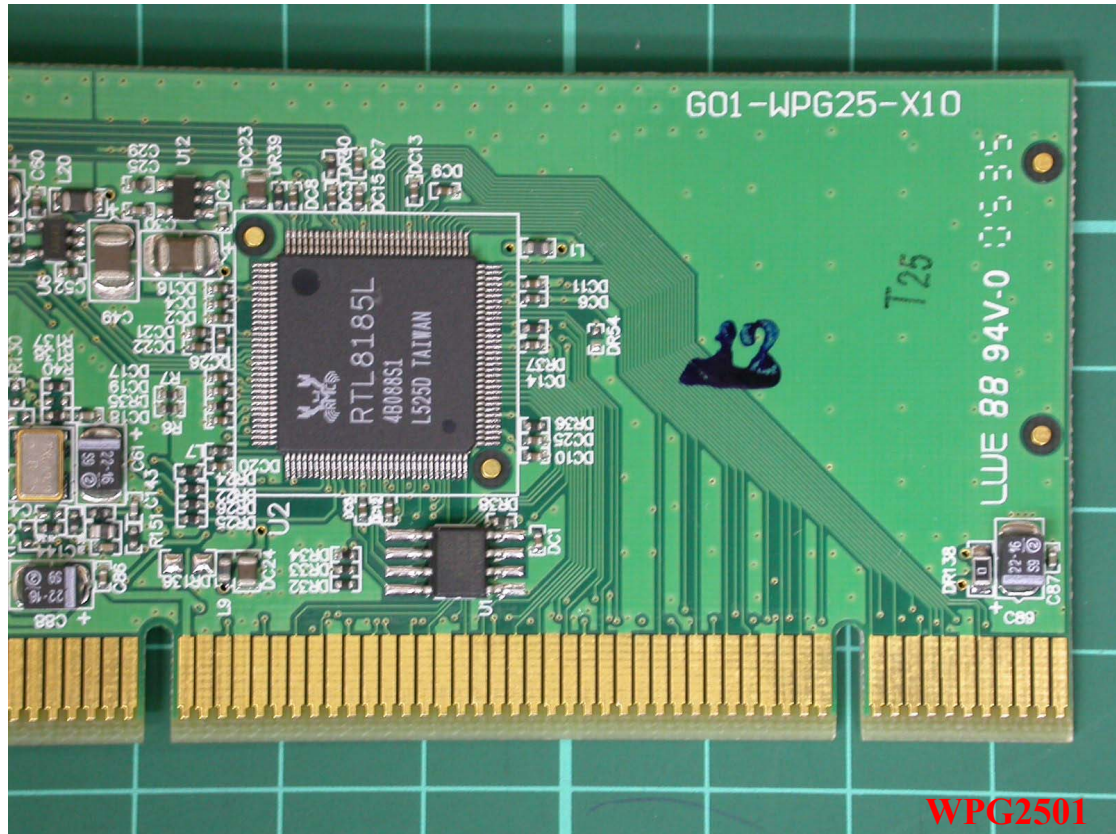
**Replaceable antenna**  
**Connector Type: Reverse SMA**



**Photo 5: Internal photo of EUT**

**Permanently connected antenna**

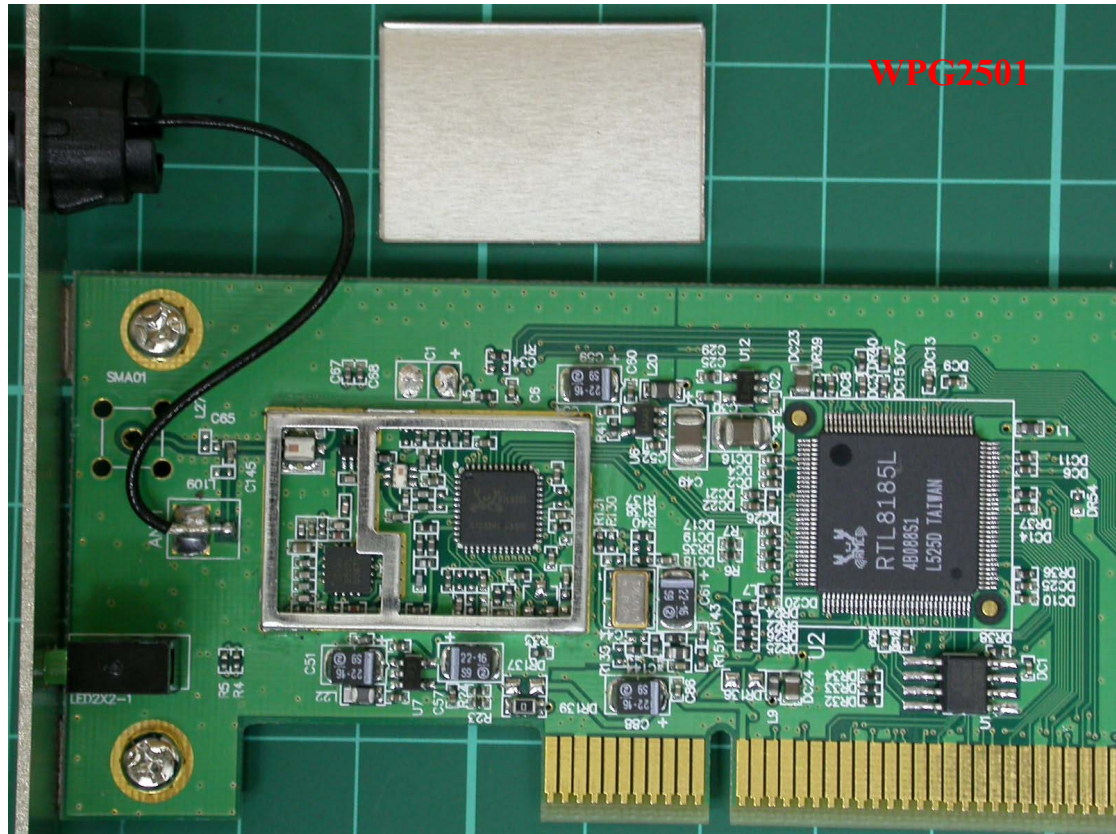
**Connector Type: N/A (Antenna with coaxial cable is soldered in the PCB Antenna)**



## Photo 6: Internal photo of EUT

Permanently connected antenna

Connector Type: N/A (Antenna with coaxial cable is soldered in the PCB Antenna)





**Photo 7: Internal photo of EUT**

**Permanently connected antenna**

**Connector Type: N/A (Antenna with coaxial cable is soldered in the PCB Antenna)**

