

SSSX5R0-29 SMOKE Combo ALARM Installation Guide

The SSSX5R0-29 is a Smoke Combo Alarm that is designed to detect smoke, heat and CO alarm. This device can provide more time by making alarms for you and your family to escape before a fire spreads or high CO concentration hazard. A DECT ULE module is installed and can transmit events to cloud service via a DECT ULE Base.

Specification

Batter Type	CR123A x3
Operating Temperature	0° C to 40° C (40° - 100°F)
Operating Humidity	10% to 95% Non-condensing
Alarm Audibility	Fire: T3 Alarm CO: T4 Alarm At least 85 dB at 10 feet
Dimension	137mm (diameter) x 50mm (depth)

LED Behavior

Enrollment . Search: Flash Blue . Enroll Success: Solid Blue
Test . Test Button: Solid Yellow . Out of Range: Flash Green . Connected to Base: Solid Green
Battery: . Low Battery: Slow Flash Red (100ms every 20s) . Critical Low Battery: Fast Flash Red (100ms every 5s)
Alarm . Fast Flash Red

Install Battery

1. Open battery cover to install 3 batteries and the device will start to operate.
2. Test the smoke alarm by pressing “Test Button” to assure the unit is functioning correctly. The horn start sounding when the test button is long pressed.

Silence

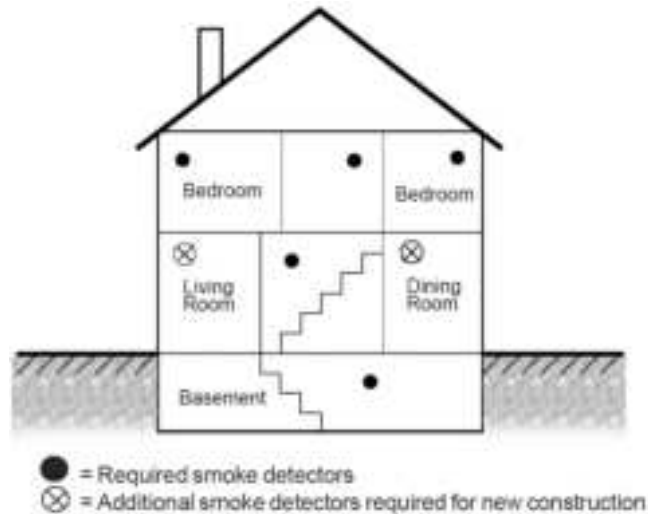
1. If the device is alarming, press the “Test /Silence” button will have it silenced. If the smoke still remains after 10 minutes, the device will alarm again.

Locations for installation

Smoke alarms should be installed in accordance with the NFPA Standard 72 (National Fire Protection Association, Battery march Park, Quincy, MA 02169). For complete coverage, smoke alarms should be installed in all rooms, halls, storage areas, basements, and attics in each family. For your information, the National Fire Alarm Code, NFPA 72, reads as follows:

- Install in all guest rooms
- Install outside of each separate dwelling unit sleeping area, within 6.4m (21ft) of any door to a sleeping room, the distance measured along a path of travel.
- Install on every level of a dwelling unit, including basements.

- Install on every level of a residential board and care occupancy (small facility), including basements and excluding crawl spaces and unfinished attics.
- Install in the living area of a guest suite.
- Install in the living area of residential board and care occupancy.



Do not place the device in the following areas:

- Combustion particles are the by-products of something that is burning. Thus, in or near areas where combustion particles are present you do not install the smoke alarms to avoid nuisance alarms, such as kitchens with few windows or poor ventilation, garages where there may be vehicle exhaust, near furnaces, hot water heaters, and space heaters.
- Do not install smoke alarms less than 20 feet (6 meters) away from places where combustion particles are normally present, like kitchens. If a 20-foot distance is not possible, e.g. in a mobile home, try to install the alarm as far away from the combustion particles as possible, preferably on the ceiling. To prevent nuisance alarm alarms, provide good ventilation in such places. Within 5 feet (1.5 meter) of open flame appliances such as furnaces, stoves and fireplaces.

Ceiling Mounting

1. Choose a flat and solid ceiling to install the device.
2. Draw a four inches horizontal line at the place where you are going to install the device.
3. Draw 2 marks to locate the screws.
4. Drill two holes at the marks and insert screws and wall plugs.
5. Attach the bracket to the ceiling by using the supplied two screws and wall plugs.
6. Attach the device onto the mounting bracket and turn it clockwise to fix it into place. Make sure it is securely attached to the mounting bracket.

Weekly Testing

1. **Never** use an open flame of any kind to test this unit. You might accidentally damage or set fire to the unit or to your home.
2. If the alarm ever fails to test properly, replace it immediately.
3. **It is important to test this unit every week to make sure it is working properly.** Using the Test/Silence button is the recommended way to test this Smoke Alarm. Press and hold the Test/Silence button until the alarm sounds (the unit may continue to alarm for a few seconds after you release the button). If it does not alarm, make sure the smoke alarm battery is installed and test it again. If it still does not alarm, replace it immediately. During testing you will hear a loud, repeating horn pattern: 3 beeps, pause, 3 beeps, pause. Red LED flashes rapidly.

Regular Maintenance

1. Clean the smoke alarm at least once a month. Gently vacuum the outside of the smoke sensing chamber using household vacuum's soft brush attachment. A can of compressed air may also be used to blow out dirt inside sensing chamber.
2. Test the smoke alarm after cleaning.
3. Never use water, cleaners or solvents since they may damage the unit.

FCC Statement

This equipment has been tested and found to comply with the limits for a Class B digital device, pursuant to Part 15 of the FCC Rules. These limits are designed to provide reasonable protection against harmful interference in a residential installation. This equipment generates, uses and can radiate radio frequency energy and, if not installed and used in accordance with the instructions, may cause harmful interference to radio communications. However, there is no guarantee that interference will not occur in a particular installation. If this equipment does cause harmful interference to radio or television reception, which can be determined by turning the equipment off and on, the user is encouraged to try to correct the interference by one of the following measures:

- Reorient or relocate the receiving antenna.
- Increase the separation between the equipment and receiver.
- Connect the equipment into an outlet on a circuit different from that to which the receiver is connected.
- Consult the dealer or an experienced radio/TV technician for help.

The FCC ID for this device is P27-SSS5R0

You are cautioned that changes or modifications not expressly approved by the party responsible for compliance could void your authority to operate the equipment.

This device complies with Part 15 of the FCC Rules. Operation is subject to the following two conditions:

- (1) This device may not cause harmful interference, and
- (2) This device must accept any interference received, including interference that may cause undesired operation.

FCC RF Radiation Exposure Statement:

- This Transmitter must not be co-located or operating in conjunction with any other antenna or transmitter.
- This equipment complies with FCC RF radiation exposure limits set forth for an uncontrolled environment. This equipment should be installed and operated with a minimum distance of 20 centimeters between the radiator and your body.