



SPECIFICATION

APPLICATION FOR APPROVAL

客户名称 CUSTOMER : 横店集团得邦照明股份有限公司
客户案号 CS P/N : A19 全彩智能灯泡
零件名称 PART NAME : AUK01993RB-2.4G BT 天线
耀登案号 DEVE NO. : A92488-90

承认日期 DATE : Nov. 11, 2022

客户确认:			
射频工程师	结构工程师	研发经理	产品经理
耀登电通科技(昆山)有限公司			
电气工程师	结构工程师	研发经理	项目经理
范伟凡	陈红雪	钱磊	王显文

总部

耀登电通科技(昆山)有限公司
江苏省昆山市周市镇迎宾路 15 号
TEL: 0512-57646998
FAX: 0512-57646168

Head Quarter

Auden Techno(KUNSHAN)CO.LTD
NO.15 YING-BIN ROAD, LUYANGTOWN, KUNSHAN, JIANGSU
CHINA

分公司:

耀登电通科技(昆山)有限公司西安分公司
西安市 高新区 唐延南路 10 号 中兴产业园 E1-04
TEL: 13382157879

Branch

Auden Techno(KUNSHAN)CO.LTD. Xi 'an branch
E1-04, zhongxing industrial park, no.10 tangyan south road,
high-tech zone, xi 'an

耀登电通科技(昆山)有限公司深圳分公司
地址: 深圳市南山区桃源街道红花岭工业区第五区 A 栋二楼
201-202 (南区)
TEL: 185 8845 5257

Auden Techno(KUNSHAN)CO.LTD. Shenzhen branch
Address: 201-202, 2nd floor, building A, zone 5, honghualing
industrial zone, taoyuan street, nanshan district, shenzhen
(southern district)

CONFIDENTIAL

This message contains information that may be confidential and privileged. Unless you are the addressee (or authorized to receive messages for the addressee), you can not use, copy or disclose to any third party or any information contained in the message. If you have received the message in error, please advise the sender by reply e-mail and delete the message. Nothing in this message should be interpreted as a digital or electronic signature that can be used to authenticate a contract or other legal document. Thank you very much.

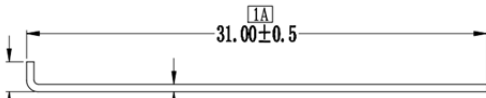
INDEX

- 一、规格书封面 (Cover)
- 二、规格书目录 (Index)
- 三、天线基本参数 (The Basic Parameters)
- 四、电气测试报告 (RF Performance Test Report)
- 五、工程图纸 (Product Drawing)
- 六、尺寸报告 (Dimensional check reports)
- 七、可靠性测试报告 (Reliability test report)

CONFIDENTIAL

This message contains information that may be confidential and privileged. Unless you are the addressee (or authorized to receive messages for the addressee), you can not use, copy or disclose to any third party or any information contained in the message. If you have received the message in error, please advise the sender by reply e-mail and delete the message. Nothing in this message should be interpreted as a digital or electronic signature that can be used to authenticate a contract or other legal document. Thank you very much.

天线基本参数 (The Basic Parameters)

项目 (Item)	特性 (Specifications)
天线结构组成	镀镍线
频率 (Frequency)	2.4g
驻波比 (V. S. W. R)	≤ 3
增益 (Gain)	≤ 3
极化方式 (Polarization)	线极化
特性阻抗 (Impedance)	50 Ω
塑胶材质 (Plastic material)	无
接头形式 (joint type)	无
工作温度 (Operation temperature)	-40°C to 150°C
储存温度 (Storage temperature)	-40°C to 150°C
湿度 (humidity)	Non-condensing 65°C 95% RH
天线图片	

CONFIDENTIAL

This message contains information that may be confidential and privileged. Unless you are the addressee (or authorized to receive messages for the addressee), you can not use, copy or disclose to any third party or any information contained in the message. If you have received the message in error, please advise the sender by reply e-mail and delete the message. Nothing in this message should be interpreted as a digital or electronic signature that can be used to authenticate a contract or other legal document. Thank you very much.

电气测试报告 (RF Performance Test Report)

Vswr

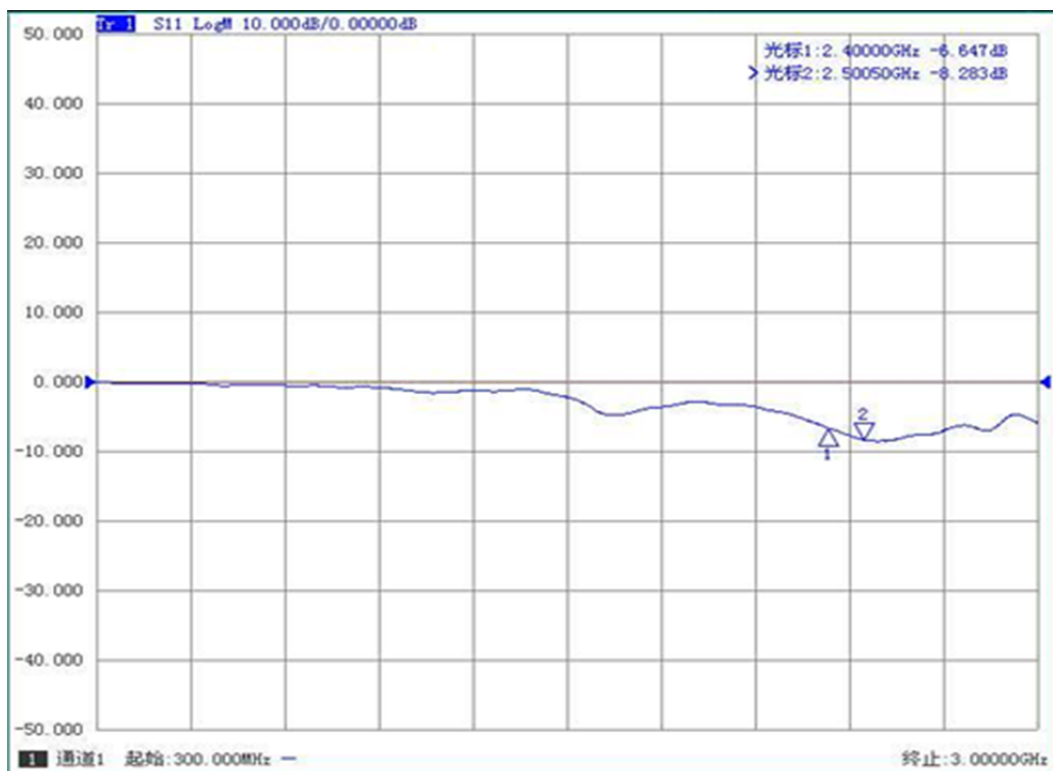
Item	Frequency Range
WIFI	2400MHz - 2500MHz



CONFIDENTIAL

This message contains information that may be confidential and privileged. Unless you are the addressee (or authorized to receive messages for the addressee), you can not use, copy or disclose to any third party or any information contained in the message. If you have received the message in error, please advise the sender by reply e-mail and delete the message. Nothing in this message should be interpreted as a digital or electronic signature that can be used to authenticate a contract or other legal document. Thank you very much.

Return loss



Main-无源测试数据

Frequency	Efficiency (%)	Gain (dBi)
2.4G	41.02	-0.2
2.41G	40.23	-0.27
2.42G	41.59	-0.01
2.43G	43.85	0.05
2.44G	41.88	-0.29
2.45G	47.86	0.49
2.46G	48.08	0.69
2.47G	50.12	1.07
2.48G	52	1.33
2.49G	48.42	1.05
2.5G	47.53	0.98

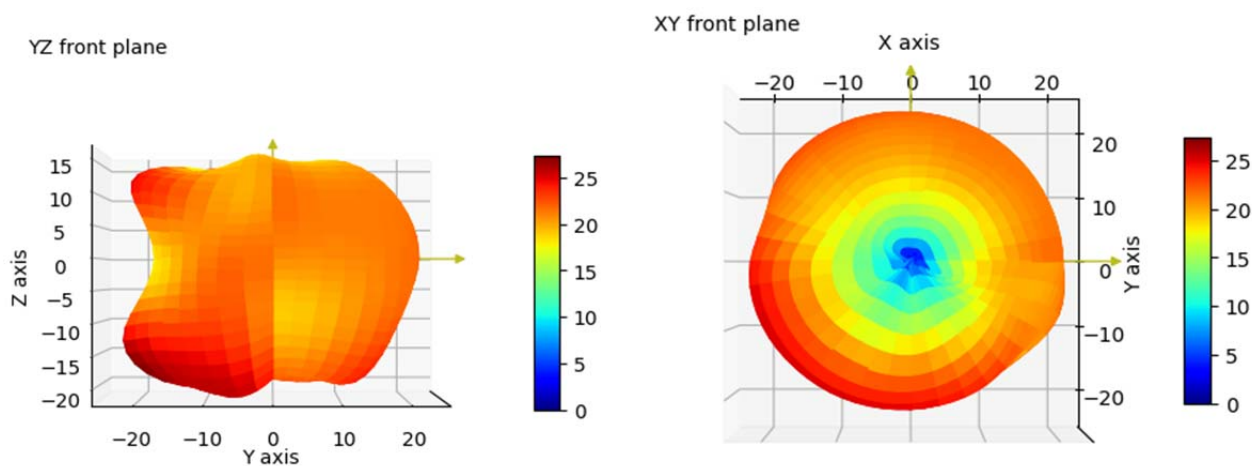
CONFIDENTIAL

This message contains information that may be confidential and privileged. Unless you are the addressee (or authorized to receive messages for the addressee), you can not use, copy or disclose to any third party or any information contained in the message. If you have received the message in error, please advise the sender by reply e-mail and delete the message. Nothing in this message should be interpreted as a digital or electronic signature that can be used to authenticate a contract or other legal document. Thank you very much.

有源数据

	channel	TRP	TIS
802.11b TRP 11M TIS 11M	1	14	-85.39
	6	13.36	-85.53
	11	13.41	-84.5
802.11g TRP 6M TIS 54M	1	13.49	-70.71
	6	14.14	-70.07
	11	13.34	-70.34
802.11n TRP 6.5M TIS 65M	1	12.97	-68
	6	14.11	-67.39
	11	13.28	-67.37

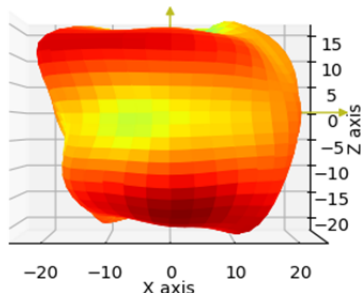
3D 测试数据



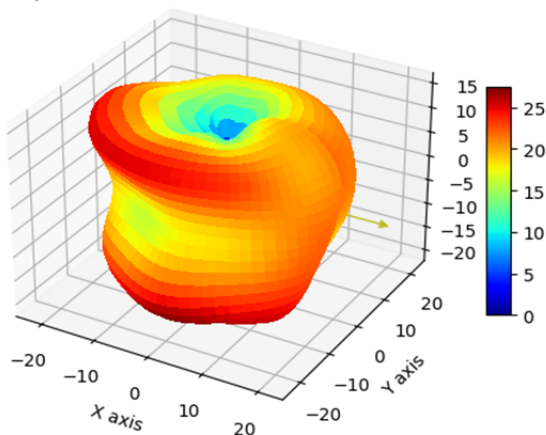
CONFIDENTIAL

This message contains information that may be confidential and privileged. Unless you are the addressee (or authorized to receive messages for the addressee), you can not use, copy or disclose to any third party or any information contained in the message. If you have received the message in error, please advise the sender by reply e-mail and delete the message. Nothing in this message should be interpreted as a digital or electronic signature that can be used to authenticate a contract or other legal document. Thank you very much.

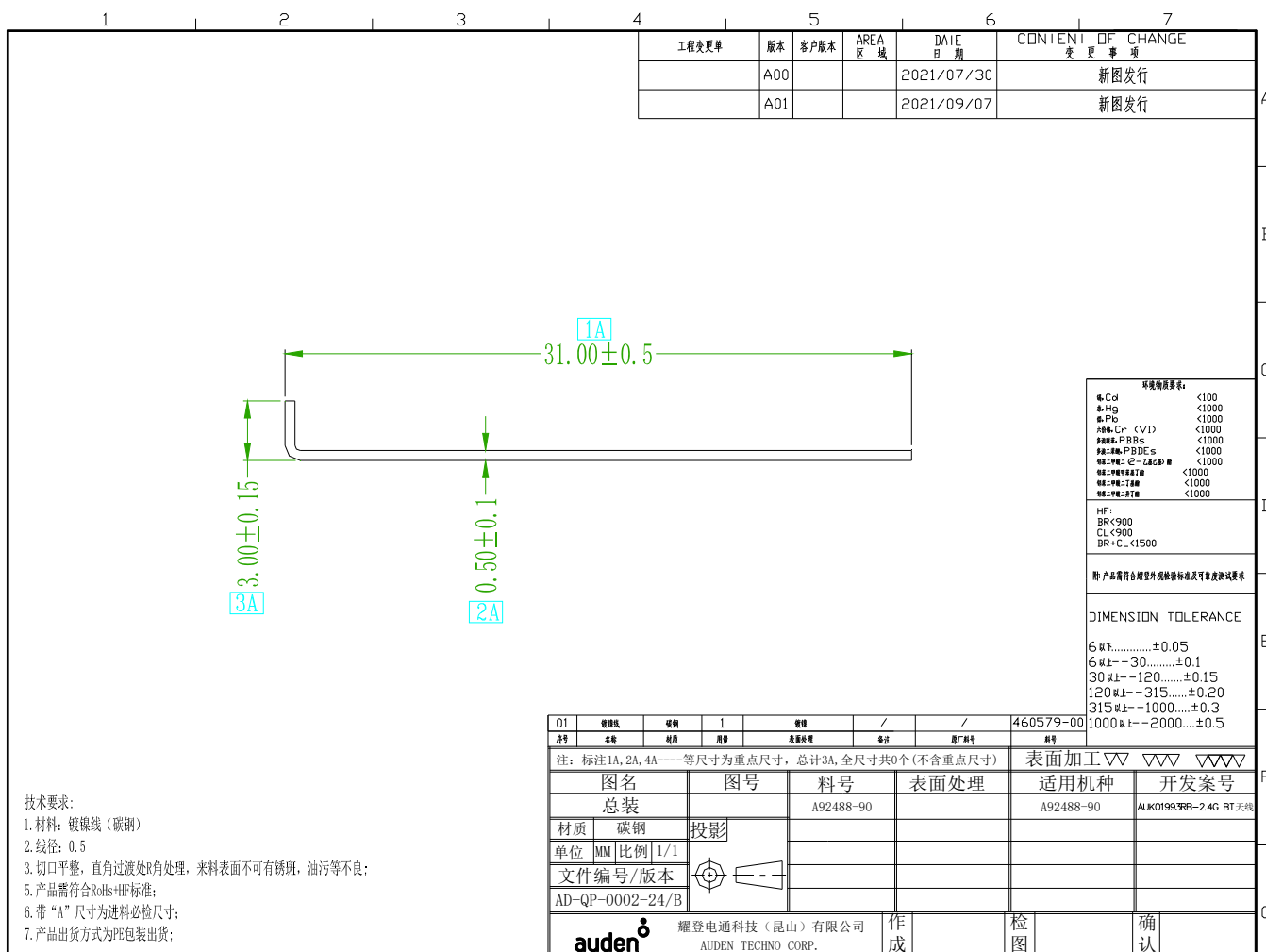
XZ front plane



3D plot for 2.412MHz



工程图纸 (Product Drawing)



CONFIDENTIAL

This message contains information that may be confidential and privileged. Unless you are the addressee (or authorized to receive messages for the addressee), you can not use, copy or disclose to any third party or any information contained in the message. If you have received the message in error, please advise the sender by reply e-mail and delete the message. Nothing in this message should be interpreted as a digital or electronic signature that can be used to authenticate a contract or other legal document. Thank you very much.