

Exhibit 8:
OVFKWC-K4X3 Internal Photos
K430 (Rave) Family and K480 (Aktiv) Family

PRODUCT DESCRIPTION.....	2
MECHANICAL HOUSING - K430 (RAVE) FAMILY AND K480 (AKTIV) FAMILY	3
INSIDE FRONT AND REAR HOUSING	3
INSIDE FRONT HOUSING	4
KEYPAD	5
PCB SIDE 1 - K430 (RAVE) FAMILY AND K480 (AKTIV) FAMILY	6
PCB SIDE 1	6
PCB SIDE 1 (WITH SHIELD CANS)	7
PCB SIDE 1 (SHIELD CANS REMOVED)	8
PCB SIDE 2 –K430 (RAVE) FAMILY AND K480 (AKTIV) FAMILY	9
PCB SIDE 2 (WITH SHIELD CANS)	9
PCB SIDE 2 (WITH SHIELD CANS REMOVED)	10

Product Description

The phones OVFKWC-K4X3 are PCS 1XRTT products. Models that contain the letter “L” have integrated Assisted GPS software feature enabled to meet the emergency location requirements of the FCC’s E911 Phase II mandate. The PCS architecture is defined as 1900MHz (PCS CDMA).

All models included in the OVFKWC-K4X3 filing use the same antenna and have identical PCB layouts in regards to the RF Circuitry, Basic Frequency Determining and Stabilization Circuitry, Basic Modulator Circuit, Transmitter Active Devices, and Tuning Targets. The only differences between models are the mechanical design of each model family’s front housings, choice of color or greyscale LCD, and software applications supported (GPS, Brew, WAP, etc.). See product matrix in Figure 1 below.

The phone is designed in compliance with the technical specifications for compatibility of mobile and base stations in the Cellular Radio telephone service contained in “Cellular System Mobile Station -Land Station Compatibility Specification” as specified in OET Bulletin 53 and TIA Standards

The phone will support certain CDMA2000 radio-configurations (RC) as describes in Exhibit 1 (operation description).



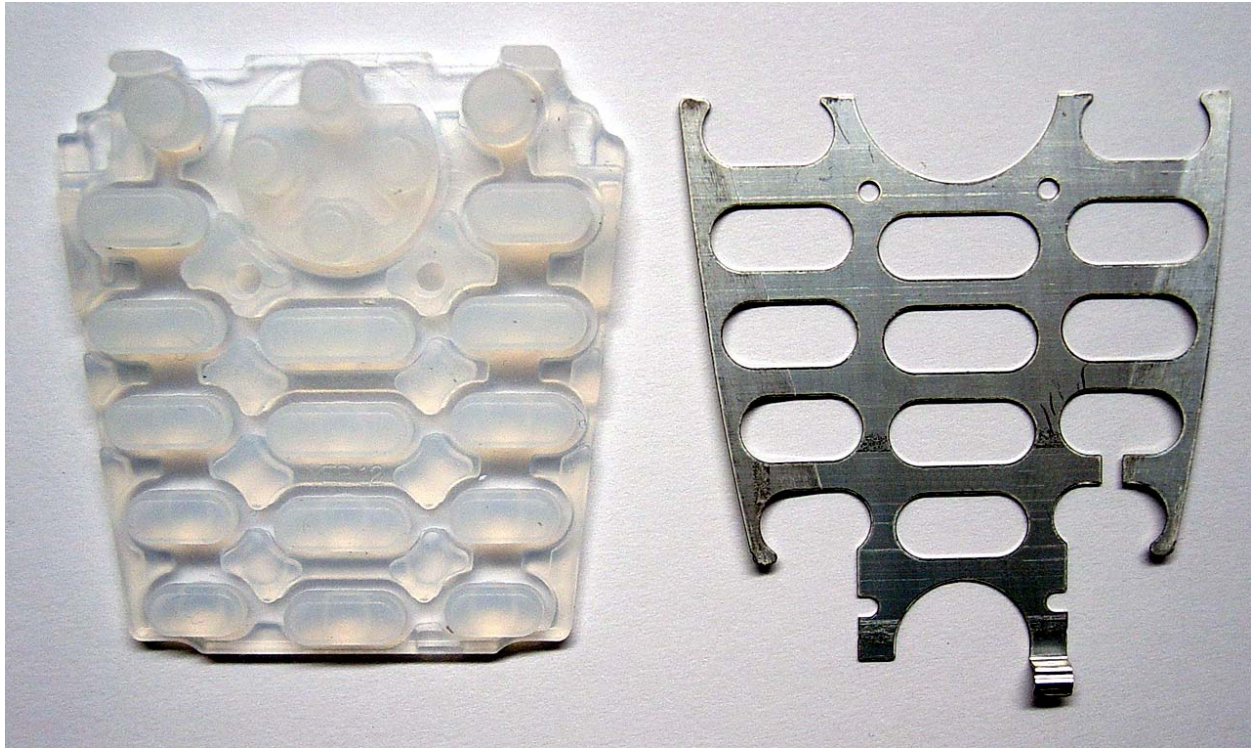
		
	Rave	Aktiv
	K430	K480
	Non-BREW / BREW	Non-BREW / BREW
KWC PCS/ GPS/ Greyscale	K433L	K483L
KWC PCS/no GPS/Greyscale	K433N	K483N
KWC PCS/ GPS/ Color	K433LC / K433XLC	K483LC / K483XLC
KWC PCS/no GPS/ Color	K433NC / K433XNC	K483NC / K483XNC
KWC PCS / GPS/WAP 2.0	K433MC / K433XMC	K483MC / K483XMC

Figure 1 OVFKWC-K4X3 Product Matrix

Mechanical Housing - K430 (Rave) Family and K480 (Aktiv) Family

	
<p>Gray LCD Variant</p>	<p>Color LCD Variant</p>
<p><i>Inside Front and Rear Housing</i> K430 (Rave) Family and K480 (Aktiv) Family</p>	

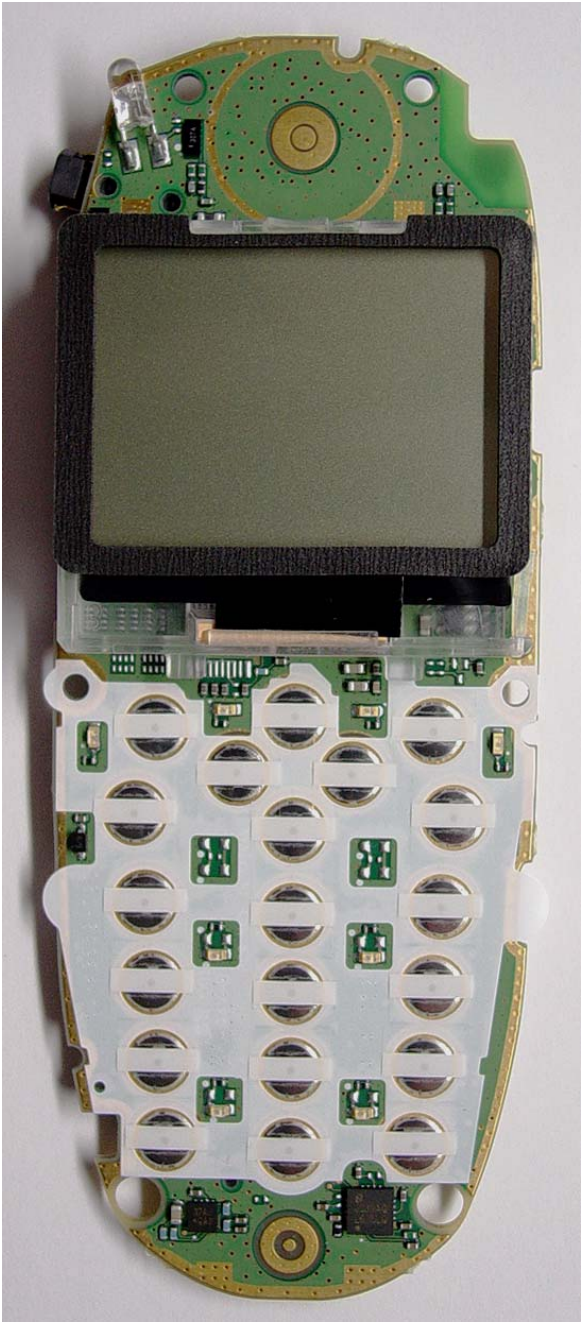

	
<p>Gray LCD Variant</p>	<p>Color LCD Variant</p>
<p><i>Inside Front Housing</i> K430 (Rave) Family and K480 (Aktiv) Family</p>	

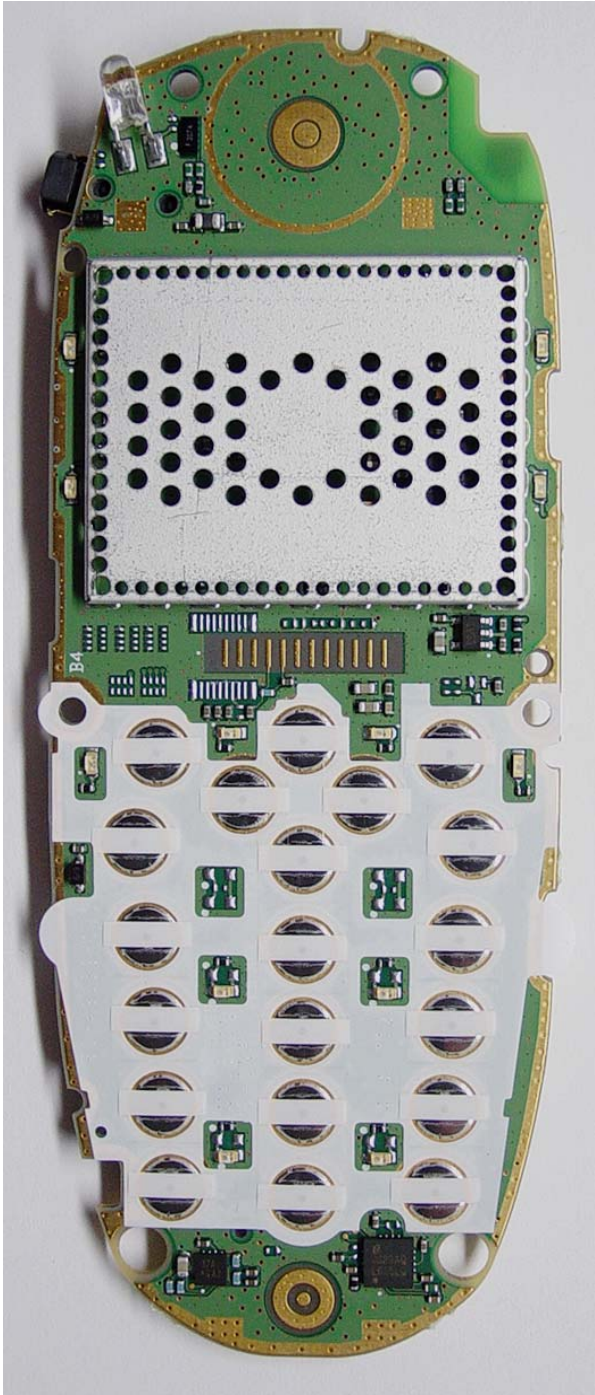
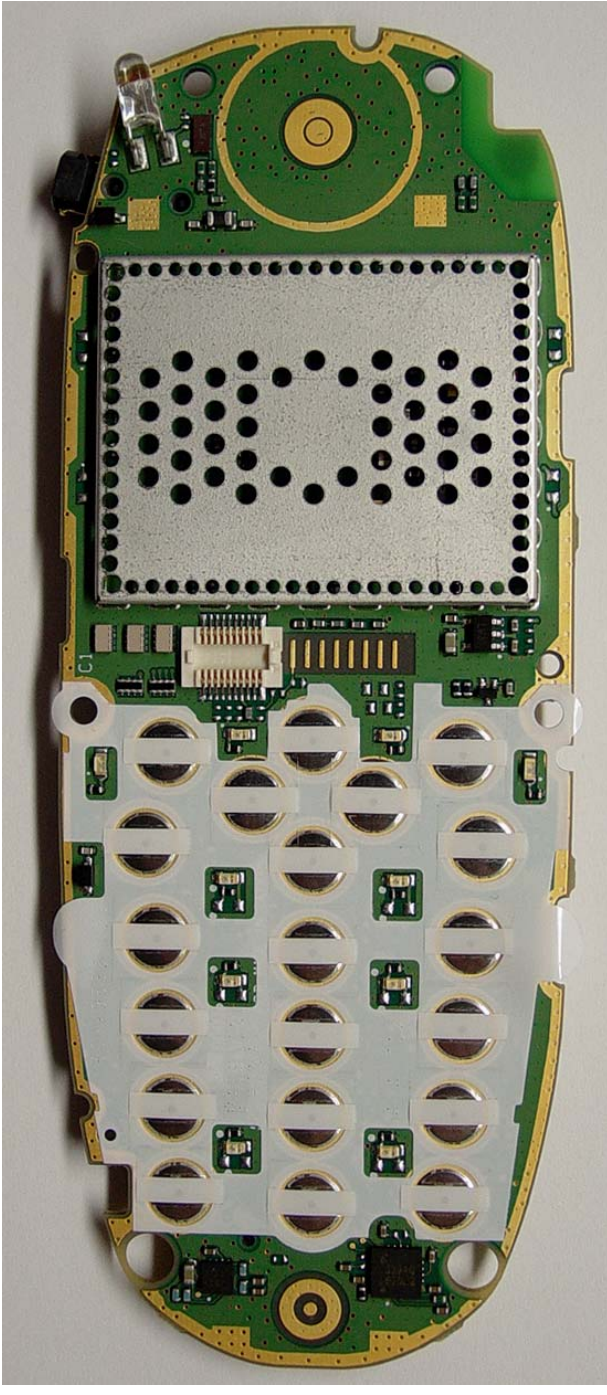


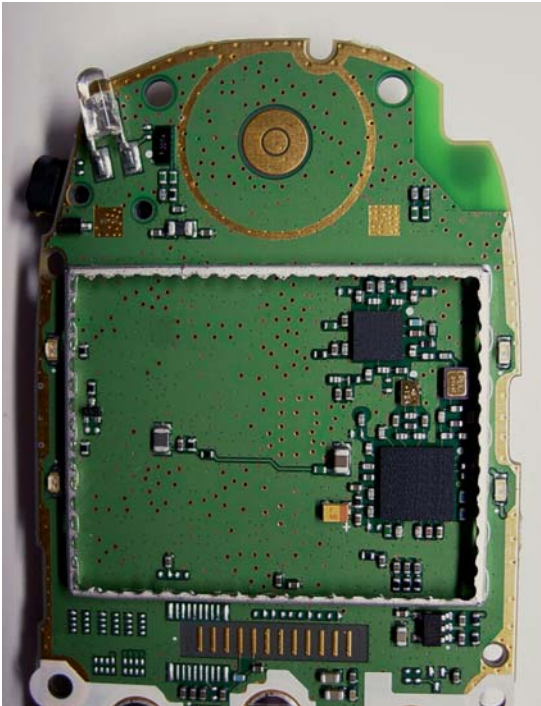
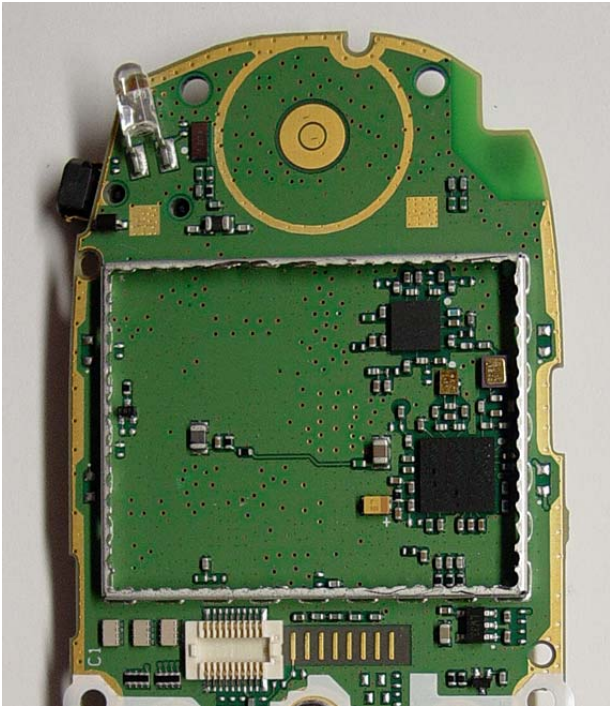
Keypad

K430 (Rave) Family and K480 (Aktiv) Family

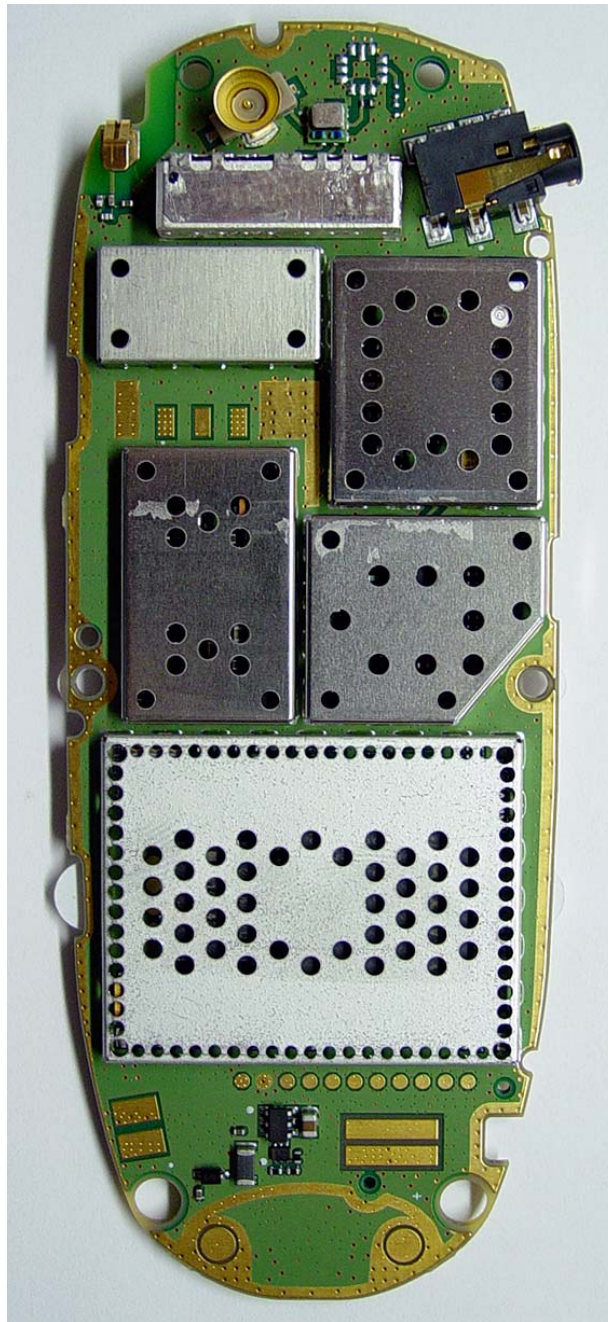
PCB Side 1 - K430 (Rave) Family and K480 (Aktiv) Family

	
<p>Gray LCD Variant</p>	<p>Color LCD Variant</p>
<p><i>PCB Side 1</i> K430 (Rave) Family and K480 (Aktiv) Family</p>	

	
<p>Gray LCD Variant</p>	<p>Color LCD Variant</p>
<p><i>PCB Side 1 (with Shield Cans)</i> K430 (Rave) Family and K480 (Aktiv) Family</p>	

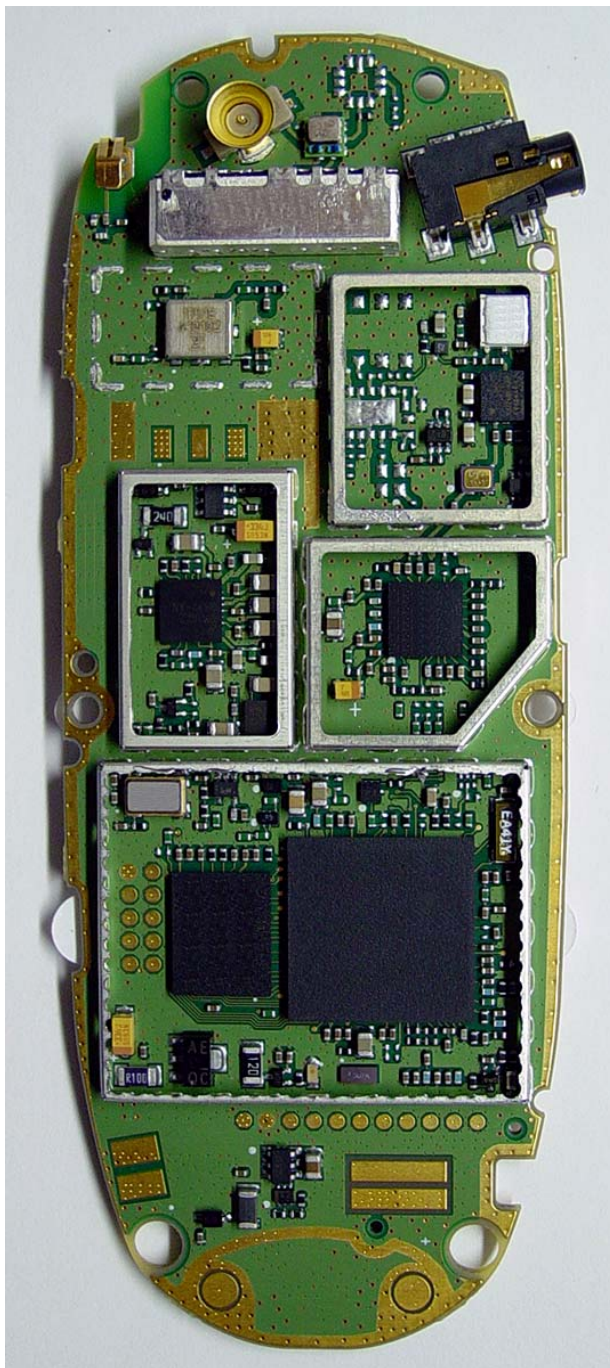
	
Gray LCD Variant	Color LCD Variant
<p><i>PCB Side 1 (Shield Cans Removed)</i> K430 (Rave) Family and K480 (Aktiv) Family</p>	

PCB Side 2 –K430 (Rave) Family and K480 (Aktiv) Family



PCB Side 2 is the same for both gray and color LCD model variants

PCB Side 2 (with Shield Cans)
K430 (Rave) Family and K480 (Aktiv) Family



PCB Side 2 is the same for both gray and color LCD model variants

PCB Side 2 (with Shield Cans removed)
K430 (Rave) Family and K480 (Aktiv) Family