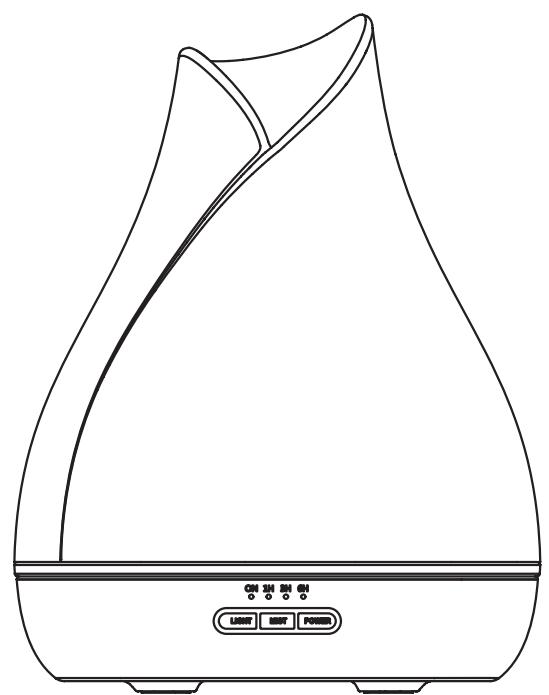


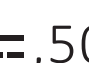
110mm

AU50-06B WOOD LOOK AROMA DIFFUSER Instruction Manual

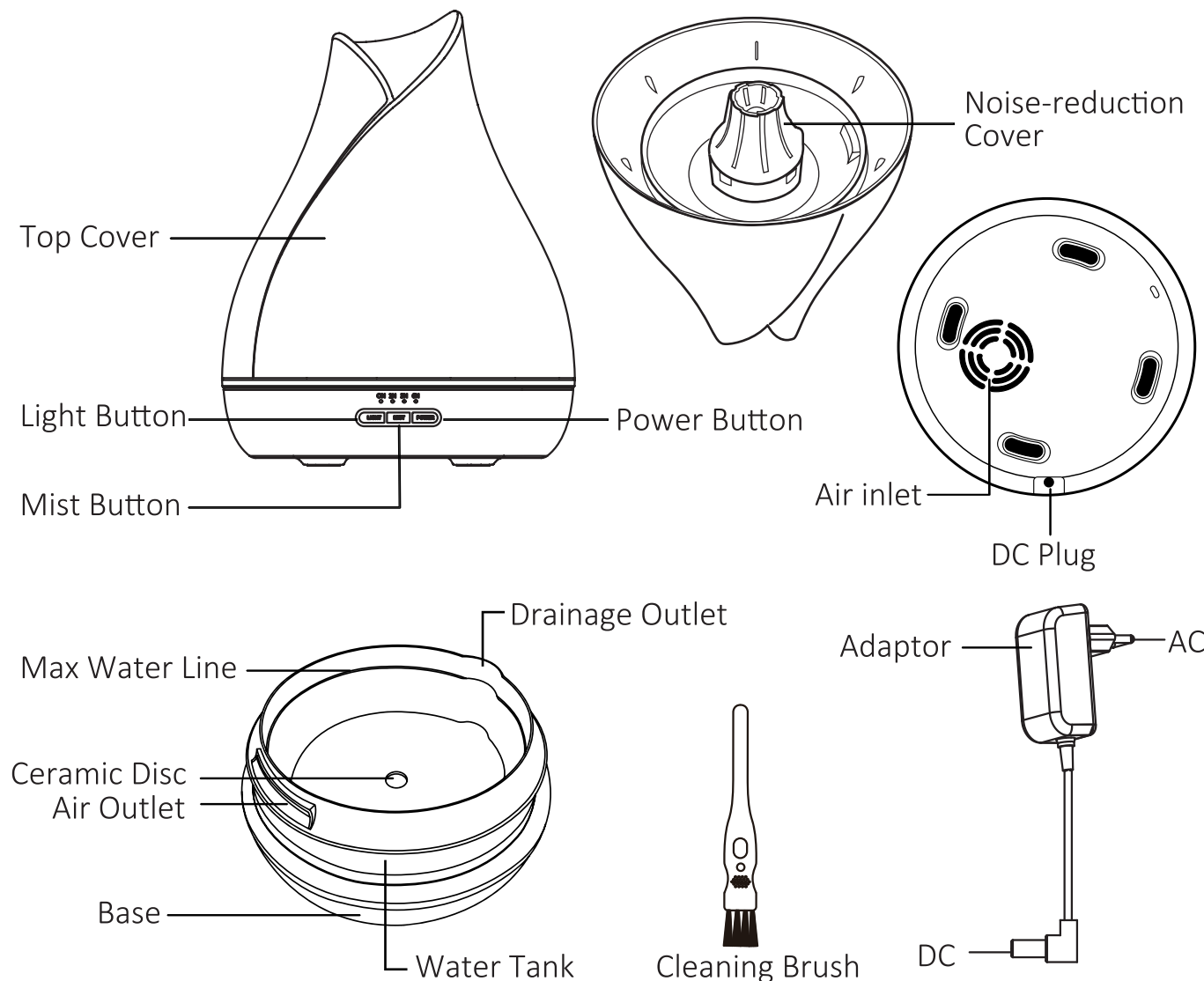


Create an aromatic, soothing atmosphere in your home. Use ultrasonic vibration to transform water into mist. Essential oil can be added to create fragrance.

Includes

Main Unit
AC Adapter: 24V , 500mA

Names of parts

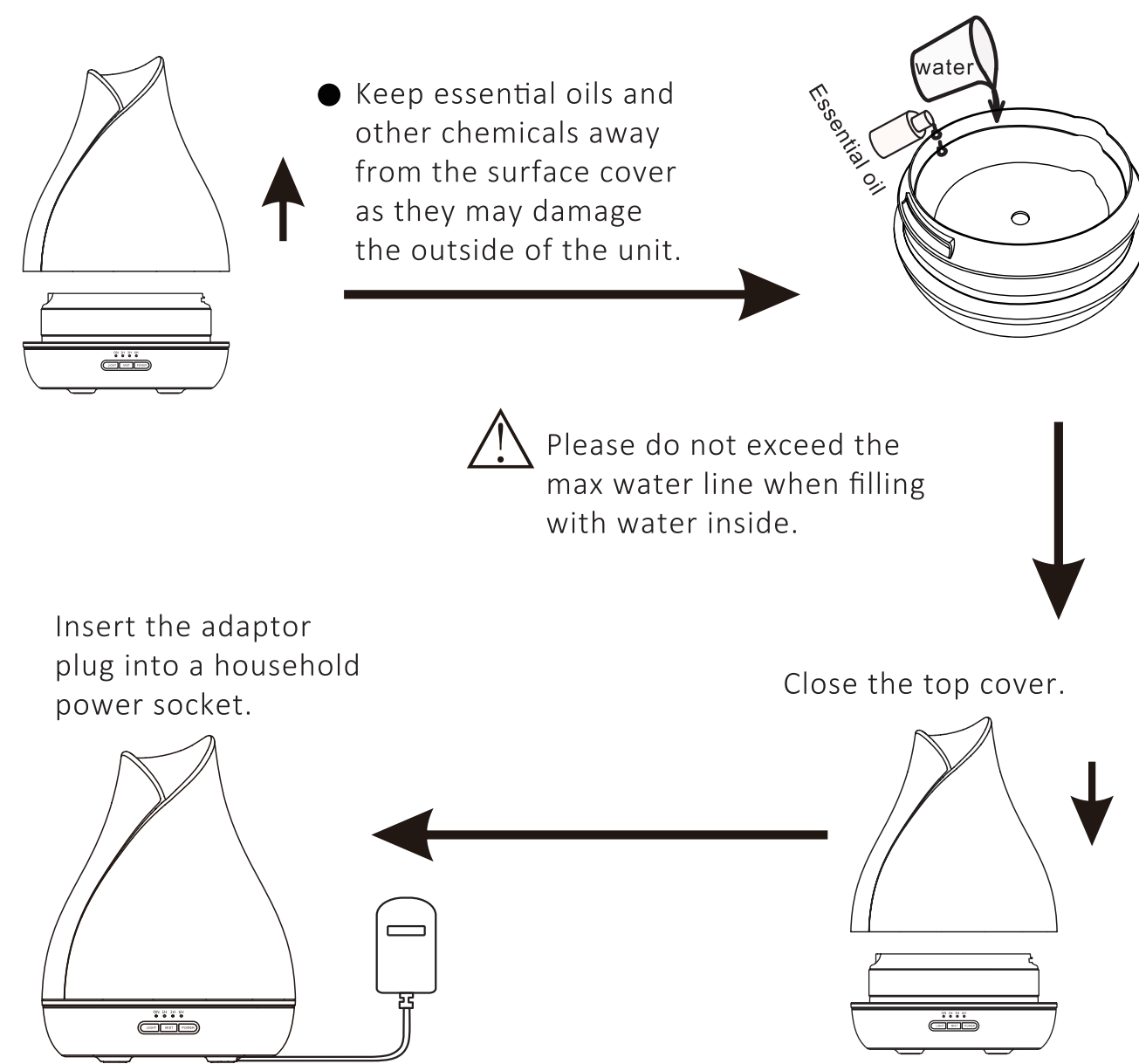


Timer, Mist and Light Buttons

Function	Operation
Timer Settings	Press the POWER button to choose the timer settings: ON/1H/3H/6H/OFF
Misting Modes	1st press of the MIST button will choose high mist, sound "BEEP" will be heard 2nd press of the MIST button will choose low mist, sound "BEEP BEEP" will be heard
7-Colour LED Light and Brightness Modes	1 press of the LIGHT button will turn the light on and the colour will change automatically Continuously press the LIGHT button to switch the colour from red, yellow, green, cyan, blue, purple, white then OFF Press and hold the LIGHT button for 2 seconds to choose 50% brightness, press and hold again to choose 100% brightness
Auto shut off function	When water runs out, unit will switch off.
Operation time	Up to 6 hours.

Set up

Open the top cover.
Add around 500mL tap water inside the water tank then add 4 to 5 drops of essential oil, depending on your preference of more or less fragrance.



WiFi Function

1) Download TUYA smart app from mobile app;
2) Entering to the register, then turn on mobile wifi and bluetooth;
3) Powered on diffuser, long press "MIST" button for 2 seconds, then indicator of "on" light up for 4seconds to enter the flashing mode;
4) Tuya App will appear Devices to be added, choose to add. Next to Choose Wifi and Enter password, enter next, after 30 seconds, wifi will connect successfully.
Remark: (Fail to connect wifi) Connect WiFi in flashing mode. If WiFi is not connected in flashing mode for two minutes, WiFi function turned off. We need to remove power cord, plug in again and repeat step 3 and step 4.

Function :
1.Power:
1st push: enter small mist mode, RGB light changing. Indicator of "on" light up.
2nd push: power and mist are turned off.
2.Mist:
In the spray control mode, select and control between " high mist " and "small mist".
3.Light:
The light will be RGB gradient in default.
In the light control mode, select "light", and you can change to "White light", "color fixed light" and " RGB Gradient light" "warm white light".
4.Timing:
Click "Countdown " button to display the menu of "Cancel", "1 hour", "3 hours", "6 hours" and "Confirm";
Click the "1 hour", "3 hours", "6 hours" timing option, the corresponding "1H", "3H", "6H" indicator light will light up.
If no timing, the timing indicator is off.

110mm

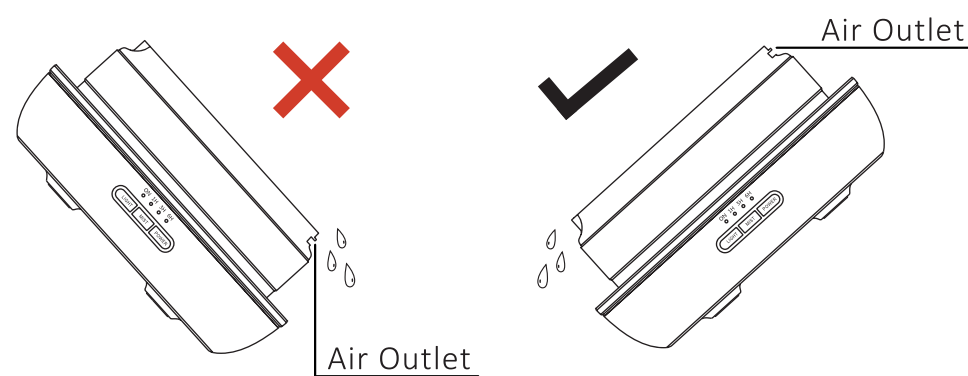
Cleaning and maintenance

The machine should be cleaned after using for 3-5 days continuously, to keep it working normal and extend the lifetime.
1. Unplug the machine before cleaning.
2. Please clean water tank with a brush and white vinegar or the dilution of detergent and warm water. Others part of the plastic cover can be cleaned with a soft cloth.
3. Please do not put the whole machine or base into water. Temperature of water cannot be over 40 degrees to clean.
4. When the machine is not used for a long period of time, please pour out the water in the tank and wipe off the drops, then place it in a shady and cool place to avoid direct sunlight.
5. Please do not take apart the noise-reduction cover to clean.
6. Please clean the noise-reduction cover with the cleaning brush.

Caution:
Please do not pour out water through the air outlet as this can damage the inside of the machine.

How to pour out the water

To avoid water flowing into the air outlet, please pour out the water correctly.



Attention

- To prevent less or no steam from the diffuser, do not add water above the max level mark.
- To prevent melting damage, do not add more than 5 drops of essential oil into the container.
 - Do not use as a medical respirator.
 - Do not use the product when there is an abnormal noise or the diffuser is overheating abnormally.
 - Do not cover or block the mist outlet or air inlet.
 - Do not use inferior essential oils. Use 100% pure essential oils.
 - Do not take off the cover during operation of the diffuser.
 - Do not place near an electric device such as computer, TV or audio equipment.
 - Do not use hot water or mineral water. Always use tap water or distilled water.
 - Keep out reach of children and pets.

Warning

- Important safety instructions:
The following safety precautions should always be followed, to reduce the risk of electric shock, personal injury or fire. It is important to read all of these instructions carefully before using the product, and to save them for future reference or new users.
- Unplug the appliance during filling and cleaning.
- This appliance is not intended for use by persons (including children) with reduced physical, sensory or mental capabilities, or lack of experience and knowledge, unless they have been given supervision or instruction concerning use of the appliance by a person responsible for their safety.
- Children should be supervised to ensure that they do not play with the appliance.
- Care should be taken when using the appliance due to the emission of hot water vapour.
- Use supplied AC adaptor only.

Troubleshooting

If you start up the machine but it doesn't work, please check the following diagnosis.

Problems	Possible Reasons	Handling
No electricity, not working.	Power not connected.	Connect the power, press the button.
	Power wire broken or adaptor burnt out.	Please contact local retailer.
Unable to spray mist or spray is bad.	Is the water level low?	Please fill water.
	Is there too much water inside the tank?	If the water volume exceeds 500mL (max water line), the mist volume will be very small.
	Is the ceramic disc dirty?	Please clean the water tank.
	Is the top cover correctly placed?	Please place top cover in the correct spot.
Main body is leaking water.	Is the bottom air inlet dirty?	Please clear away the dust in the bottom air inlet.
	Is the top cover correctly covered?	If the top cover is not correctly covered, the water will splash out and fall onto the machine body or table.
	Condensation water on the body may be caused by low-temperature or a humid environment.	Please avoid low-temperature and humid environments.

12 Month Warranty

IMPORTANT!

Care should be taken with the use of diffusers around animals. Both the choice of essentially oils and where animals are should be taken into consideration when in use.



Warning: Changes or modifications to this unit not expressly approved by the party responsible for compliance could void the user's authority to operate the equipment.

This device complies with Part 15 of the FCC Rules. Operation is subject to the following two conditions:
(1) this device may not cause harmful interference, and (2) this device must accept any interference received, including interference that may cause undesired operation.

Note: This equipment has been tested and found to comply with the limits for a Class B digital device, pursuant to part 15 of the FCC Rules. These limits are designed to provide reasonable protection against harmful interference in a residential installation. This equipment generates, uses and can radiate radio frequency energy and, if not installed and used in accordance with the instructions, may cause harmful interference to radio communications. However, there is no guarantee that interference will not occur in a particular installation. If this equipment does cause harmful interference to radio or television reception, which can be determined by turning the equipment off and on, the user is encouraged to try to correct the interference by one or more of the following measures:
-- Reorient or relocate the receiving antenna.
-- Increase the separation between the equipment and receiver.
-- Connect the equipment into an outlet on a circuit different from that to which the receiver is connected.
-- Consult the dealer or an experienced radio/TV technician for help.

To maintain compliance with FCC's RF exposure guidelines, the distance must be at least 20cm between the radiator and your body, and fully supported by the operating and installation configurations of the transmitter and its antenna(s).