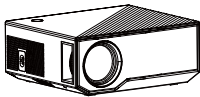


所有英文字体均是Arial字体

## MINI Projector GC05 User Guide



Due to continuous improvement, actual product may  
different from the manual, manual is for reference only.

After Sales Email support: [satmwell.com](mailto:satmwell.com)

### English

#### 1. Safety Notice:

- 1.1 Please read use manual carefully before you use projector.
- 1.2 To prevent the projector from overheating and ensure its reliable operation, it is recommended to install the projector in a well-ventilated place. For example, don't place the projector on a messy coffee table, sofa, bed, etc. Do not place the projector in a narrow space with poor air circulation, such as a bookcase or closet.
- 1.3 Do not use this projector near water or wet places. To reduce the risk of fire and/or electric shock, do not expose this projector to rain or damp.
- 1.4 Do not install this product near heat sources, such as radiators, heaters, stoves or other heat-generating equipment.
- 1.5 Use a dry cloth when cleaning.
- 1.6 Use only the connectors/accessories specified by the manufacturer.
- 1.7 If this machine is physically damaged or used carelessly, please do not continue to use this machine. Such as the power cord is damaged, liquid spills on the projector, the projector suffers from rain or damp, foreign objects fall into the projector or internal components are loose, etc.
- 1.8 Do not let objects or liquids enter the projector. Otherwise, it may come into contact with dangerous voltage points and short-circuit components, resulting in fire or electric shock.
- 1.9 Pay attention to the safety sign on the projector housing.
- 1.10 This machine should only be repaired by relevant service personnel.
- 1.11 Before cleaning the product, turn off the power and unplug the power cord from the AC outlet. Wipe the host shell with a soft dry cloth dipped in neutral detergent. If this product is not used for a long time, unplug the power plug from the AC outlet.
- 1.12 Do not block the slots and openings for ventilation on the equipment.
- 1.13 Do not use it under the following conditions: extremely hot, cold or humid environment; an area susceptible to a lot of dust and dirt; near any equipment that generates a strong magnetic field; direct sunlight.
- 1.14 When using this product, please keep it out of the reach of children and pets to prevent damage caused by the temperature of the device.
- 1.15 Do not look directly into the lens of the projector when using this projector. Bright light may harm your eyes.

#### Warning tips:

Please follow all warnings, precautions and recommended maintenance items in this user guide.

- 1.1 Warning: For children under 18 months, it is forbidden to use this product. Children under 18 months should use this product in the presence of parents or adults to avoid accidents.
- 1.2 Warning: Do not look directly at the projector lens when the light bulb is on. Bright light may hurt your eyes.
- 1.3 Warning: To reduce the risk of fire or electric shock, do not expose this projector to rain or damp.
- 1.4 Warning: Do not open or disassemble this projector to avoid electric shock.
- 1.5 Warning: Before changing the bulb, please completely cool the unit.
- 1.6 Warning: When turning off the projector, make sure to finish the heat dissipation process before unplugging the power cord. The projector needs 30 seconds to cool down.

**FCC Warnings:**  
This device complies with part 15 of the FCC Rules. Operation is subject to the following two conditions: (1) this device may not cause harmful interference, and (2) this device must accept any interference received, including interference that may cause undesired operation. Any changes or modifications not expressly approved by the party responsible for compliance could void the user's authority to operate the equipment.

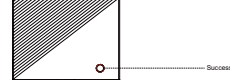
NOTE: This equipment has been tested and found to comply with the limits for a Class B digital device, pursuant to Part 15 of the FCC Rules. These limits are designed to provide reasonable protection against harmful interference in a residential installation. This equipment generates, uses and can radiate radio frequency energy and, if not installed and used in accordance with the instructions, may cause harmful interference to radio communications. However, there is no guarantee that interference will not occur in a particular installation. If this equipment does cause harmful interference to radio or television reception, which can be determined by turning the equipment off and on, the user is encouraged to try to correct the interference by one or more of the following measures:  
-- Relocate or reorient the receiving antenna.  
-- Increase the separation between the equipment and receiver.  
-- Connect the equipment into an outlet on a circuit different from that to which the receiver is connected.  
-- Consult the dealer or an experienced radio/TV technician for help.  
To maintain compliance with FCC's RF Exposure guidelines, this equipment should be installed and operated with minimum 20cm distance between the radiator and your body. Only use the supplied antenna.

#### 2. Preparation before Light on

- 2.1 As following picture, connect the power Cable.



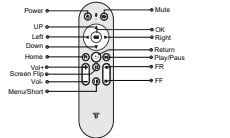
- 2.2 When power indicating lamp lighting, the equipment processing power.



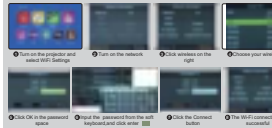
#### 3. Power on/Power off

Press button on projector or remote control to switch on the projector.

#### 4. Remote Control Introduction



- 7.8 Set Projector connect to WiFi



- 7.9 iOS/Mac Mirror or Android Mirror

