

INSTRUCTION SHEET & PACKAGING MUST BE RETAINED SINCE IT CONTAINS IMPORTANT INFORMATION.

BATTERY INSTALLATION

(For maximum performance, use alkaline batteries)

Remember to take out all batteries from vehicle and transmitter after playing.

1. Do not mix old and new batteries.
2. Do not mix alkaline, standard (Carbon-Zinc), or rechargeable batteries.

ATTENTION PARENTS

It is recommended that this toy and all accessories be periodically examined for potential hazards and that any potentially hazardous parts be repaired or replaced.

HOW TO INSTALL BATTERY IN VEHICLE

1. Turn over the vehicle and push the ON/OFF to "OFF" position. (See Diagram #1)
2. Open the battery cover. (See Diagram #1)
3. Follow the "arrow" sign and insert the battery pack into the battery compartment. Make sure the (+) (-) polarity is correct. (See Diagram #2)
4. Replace the battery cover.

HOW TO INSTALL BATTERY IN TRANSMITTER

1. Remove battery cover and install 2 x AA batteries by matching + and - poles as indicated in the battery compartment. (See Diagram #3)
2. Replace the battery cover.

Note: Remove battery after you have finished using your vehicle.

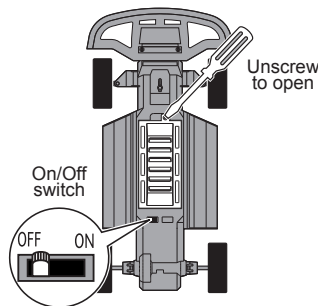


DIAGRAM 1

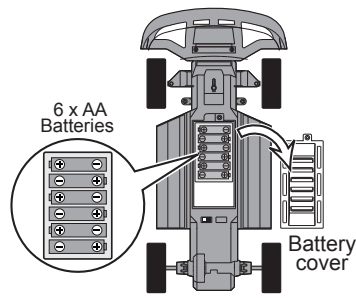


DIAGRAM 2

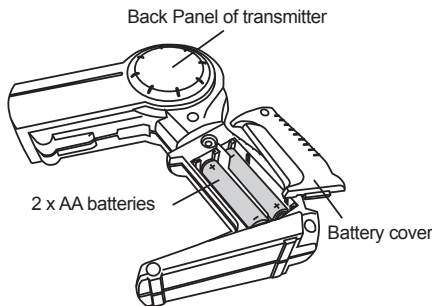


DIAGRAM 3

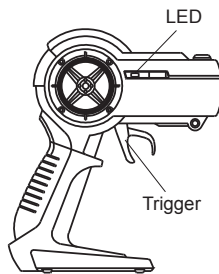


DIAGRAM 4

EZTEC®
www.eztec.hk

EZ-TEC® IS A REGISTERED TRADEMARK OWNED BY SCIENTIFIC TOYS, LTD.

© 2020 SCIENTIFIC TOYS LTD. 1108, TOWER B,
14 SCIENCE MUSEUM ROAD, TSIMSHATSUI, HONG KONG.
PRINTED IN CHINA
O.I. NO.6561

SIZE: 210MM X 149MM PN#65-6561-000-0100

HOW TO PLAY

OPERATION

1. Operate the vehicle with the transmitter (See Diagram #6).
2. Turn OFF the vehicle after playing and remove all batteries from the transmitter and the car.
3. To adjust steering alignment, adjust the "Steering Alignment Lever" on the underside of the vehicle when the vehicle does not run straight forward (See Diagram #7).

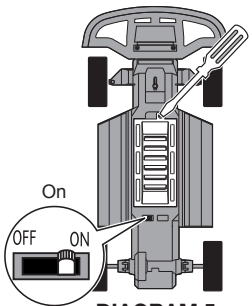


DIAGRAM 5

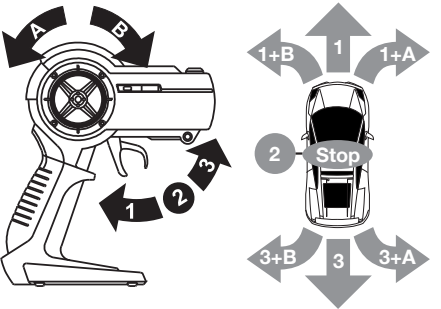


DIAGRAM 6

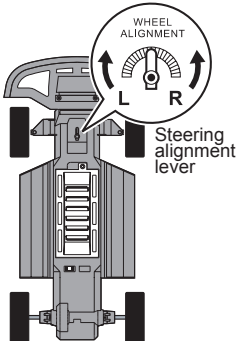


DIAGRAM 7

CAUTIONS

1. Do not charge battery pack that is hot, wet or shows leakage or corrosion.
2. May explode if disposed of in fire!
3. Do not disassemble the battery pack.
4. Non-rechargeable batteries are not to be recharged.
5. Rechargeable batteries are to be removed from the toy before being charged.
6. Rechargeable batteries are only to be charged under adult supervision.
7. Different types of batteries or new and used batteries are not to be mixed.
8. Battery charger must be operated by adults only.
9. Only batteries of the same or equivalent type as recommended are to be used.
10. Batteries are to be inserted with the correct polarity.
11. Exhausted batteries are to be removed from the toy.
12. The supply terminals are not to be short-circuited.
13. The antenna wires are not to be inserted into socket outlet.
14. Dispose of batteries responsibly.
15. Do not dispose of in fire.

FCC NOTE:

THE ANTENNA PROVIDED IS A UNIQUE ANTENNA. BY INSTALLATION OF UNAUTHORIZED ANTENNA TO THIS EQUIPMENT. SUCH UNAUTHORIZED INSTALLATION COULD VOID THE USER'S AUTHORITY TO OPERATE THE EQUIPMENT.

THE MANUFACTURER IS NOT RESPONSIBLE FOR ANY RADIO OR TV INTERFERENCE CAUSED BY UNAUTHORIZED MODIFICATIONS TO THIS EQUIPMENT. SUCH MODIFICATIONS COULD VOID THE USER'S AUTHORITY TO OPERATE THE EQUIPMENT.

WARNING:

NOT SUITABLE FOR CHILDREN UNDER 3 YEARS OF AGE, DUE TO SMALL PARTS.

FCC Information

NOTE: This equipment has been tested and found to comply with the limits for a Class B digital device, pursuant to Part 15 of the FCC Rules. These limits are designed to provide reasonable protection against harmful interference in a residential installation. This equipment generates, uses, and can radiate radio frequency energy and, if not installed and used in accordance with the instructions, may cause harmful interference to radio communications. However, there is no guarantee that interference will not occur in a particular installation. If this equipment does cause harmful interference to radio or television reception, which can be determined by turning the equipment off and on, the user is encouraged to try to correct the interference by one or more of the following measures:

- Reorient or relocate the receiving antenna.
- Increase the separation between the equipment and receiver.
- Connect the equipment into an outlet on a circuit different from that to which the receiver is connected.
- Consult the dealer or an experienced radio/TV technician for help.

If you cannot eliminate the interference, the FCC requires that you stop using your equipment. Warning: Changes or modifications not expressly approved by the party responsible for compliance could void the user's authority to operate the equipment. This device complies with Part 15 of the FCC Rules. Operation is subject to the following two conditions: (1) this device may not cause harmful interference, and (2) this device must accept any interference received, including interference that may cause undesired operation.