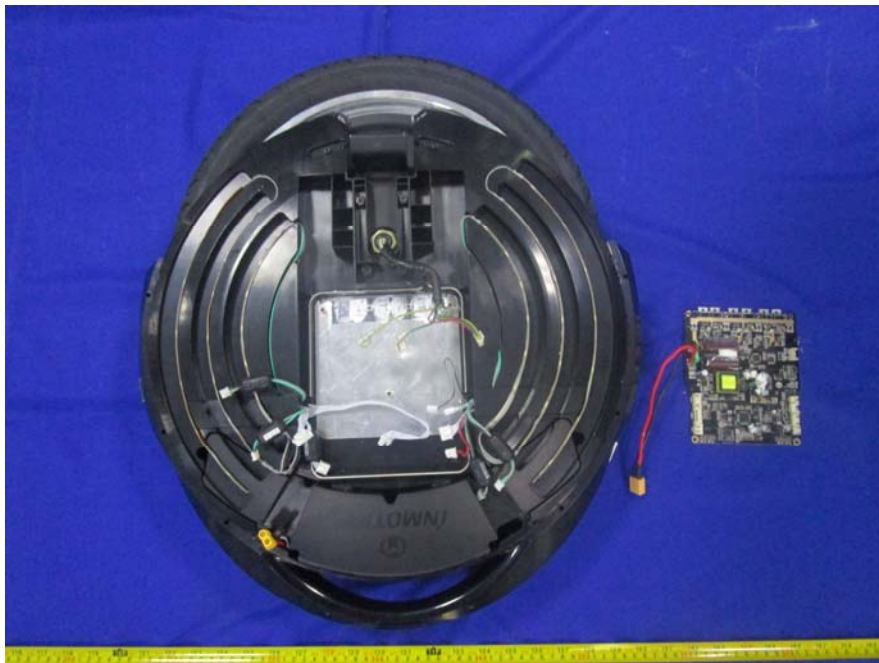


EXHIBIT C - EUT INTERNAL PHOTOGRAPHS

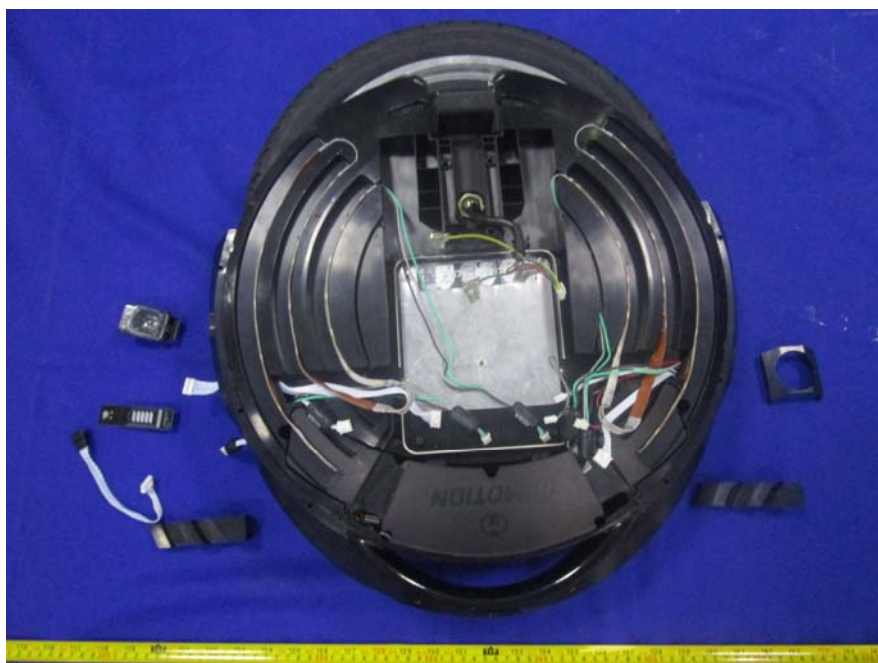
EUT – Uncover View



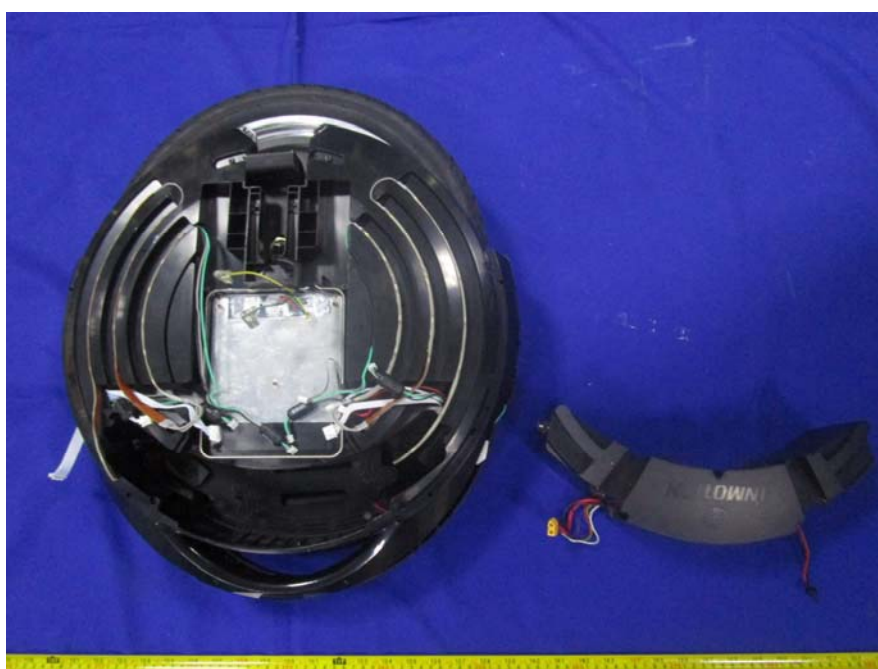
EUT – Uncover View



EUT – Uncover View



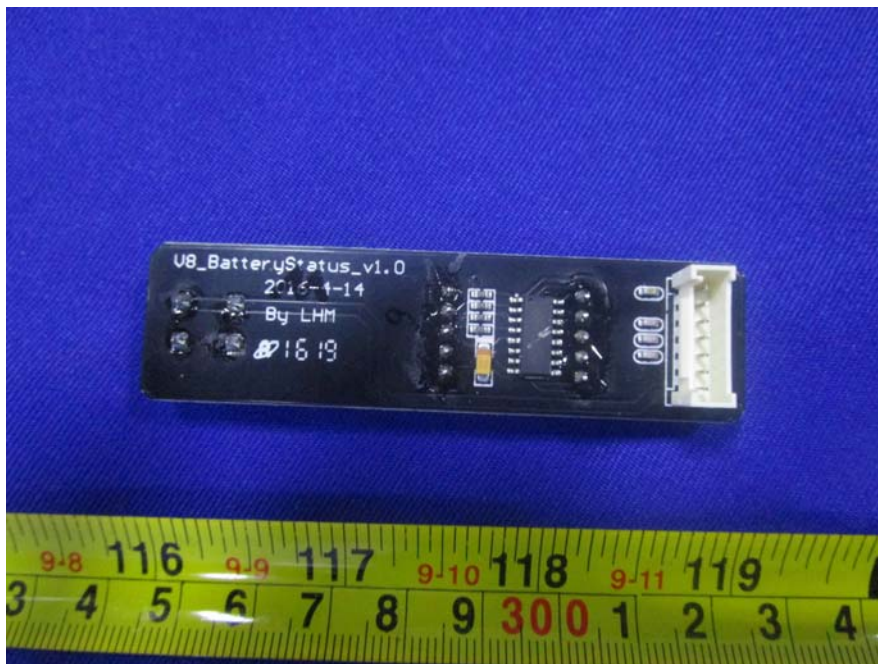
EUT – Uncover View



EUT – Battery Status Board Top View



EUT –Battery Status Board Bottom View



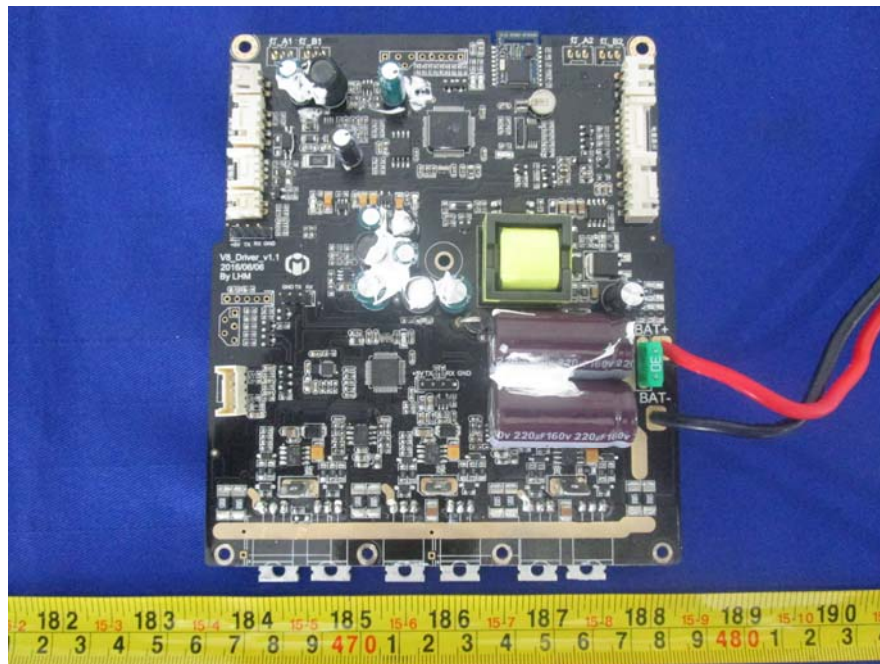
EUT – Lighting Board Top View



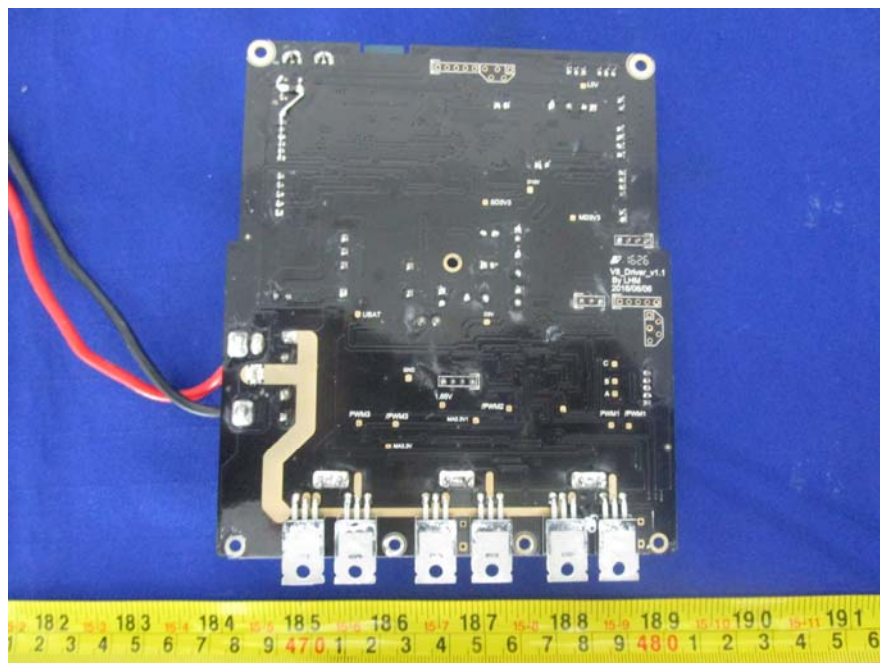
EUT – Lighting Board Bottom View



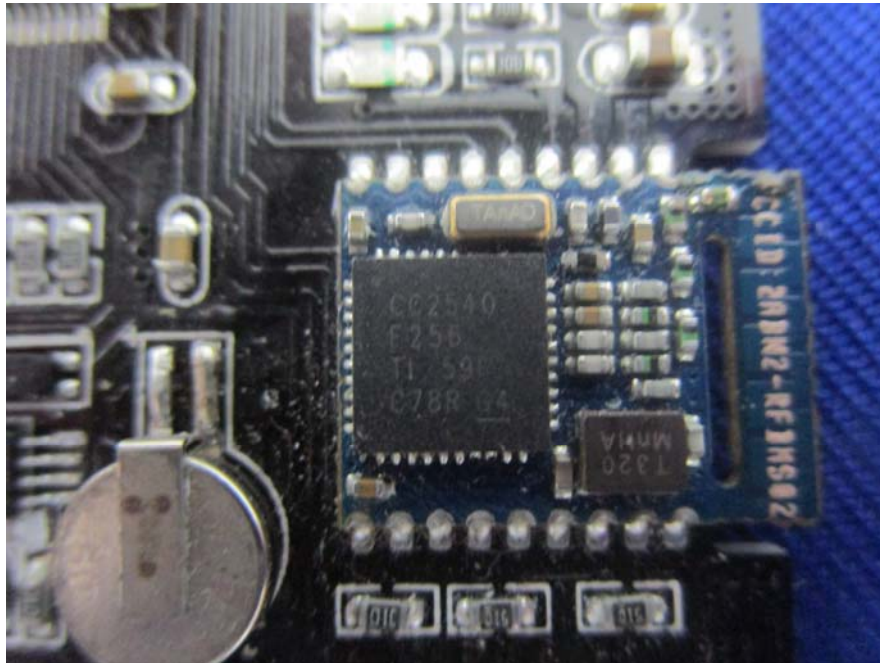
EUT – Mainboard Top View



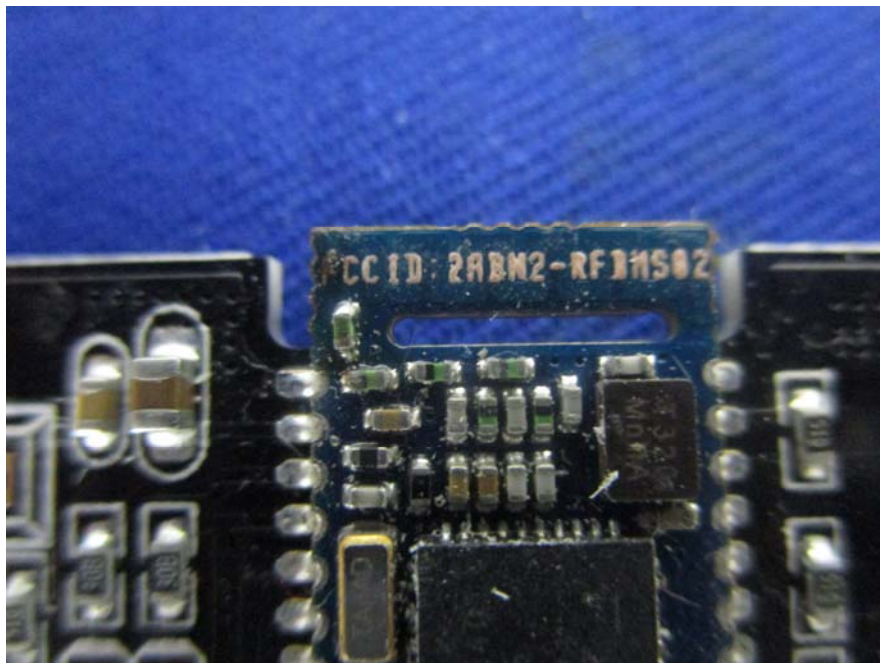
EUT – Mainboard Bottom View



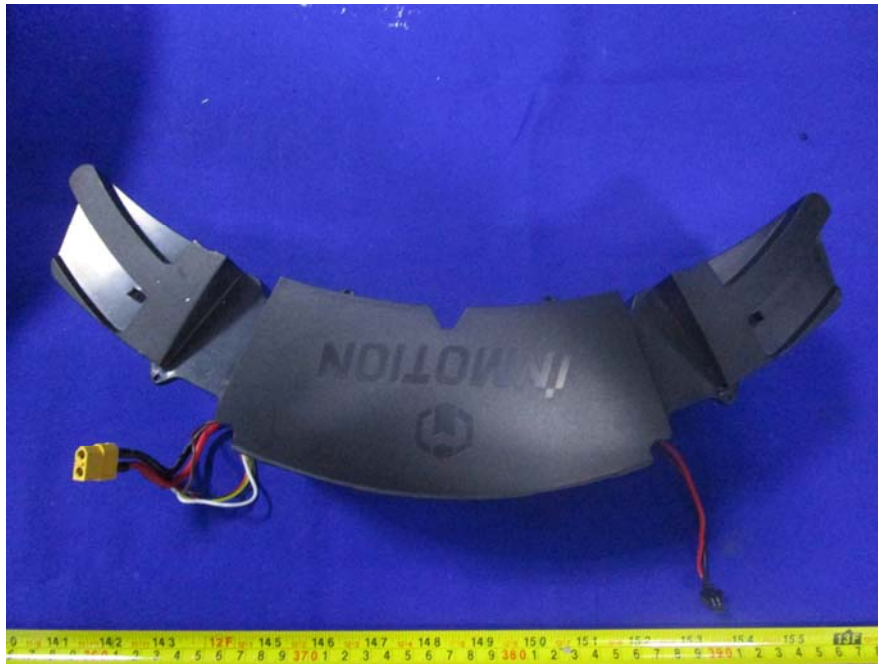
EUT – BLE Module View



EUT – BLE Antenna View



EUT – Battery Top View



EUT – Battery Bottom View



EUT – Battery Label View

锂离子电池 型号：LXV874V 额定电压：74V 充电限制电压：84V 能量：474Wh	Lithium-ion Battery Model: LXV874V Rated voltage: 74V Input voltage: 84V Power: 474Wh	 D6H996649
Made in China		



警告
WARNING

1. 在使用前或长期存储时，请先仔细阅读说明书。
Please read the battery safety tips carefully before use or long period storage.

2. 务必使用原装专用充电器对电池进行充电。
Do charge the battery with the original charger adaptor.

3. 非充电状态请保持充电口盖关闭。
Please cover the charging connector when unplugged.

4. 该电池只能应用于指定型号的乐行体感车。
The battery can only be used on a specific INMOTION SCV model.

5. 安装及拔出电池时请轻拿轻放，以防跌落。
Be careful when pull out or install the battery in case of accidental falling.

6. 严禁拆开电池外壳，不得对电池输出端强制放电，反接及短路，否则可能发生不可预知的危险。
Do not attempt to open the shell of the battery or cause a short circuit in case of unknown risks and danger.

