



广东旺家智能机器人有限公司  
Guangdong WangJia Intelligent Robot Co. LTD.

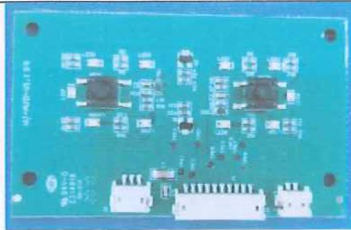
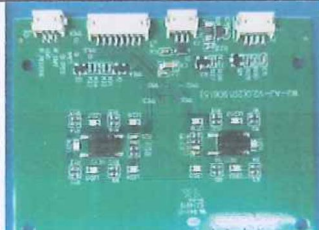
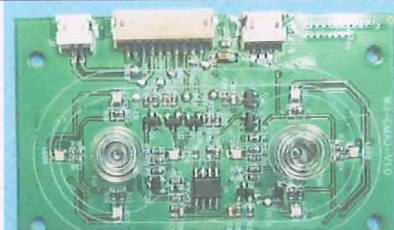
Date: 23 March, 2021

Subject: Declaration Letter

To Whom It May Concern:

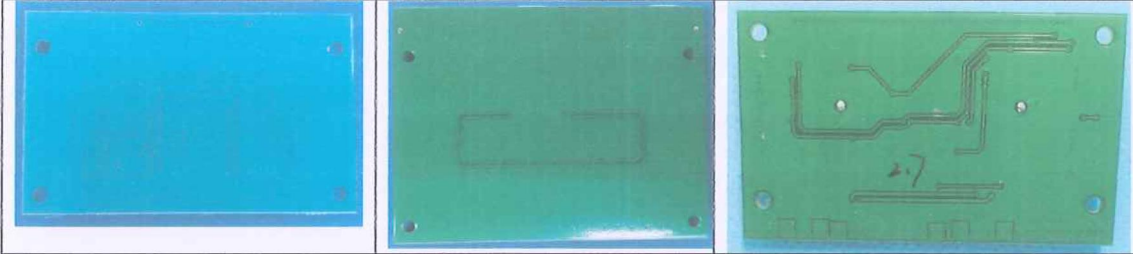
We Officially notify TÜV SÜD Certification and Testing (China) Co., Ltd. Shenzhen Branch that the <<Additional Model>> have the same technical construction including main circuit diagram, main PCB layout, Wi-Fi module, components and component layout, all electrical construction and mechanical construction, with <<Product>>, <<Main Test Model>>.

The differences are shown in the following table:

Model No.	Fan motor		UV function	Control PCB			Remark of others
	20N704P 110	20N704K5 00		1#	2#	3#	
J300	√	—	—	√	—	All models are same except the appearance and colour.	
J300S	—	√	—				
J300U	√	—	√				
J300SU	—	√	—				
J301	√	—	—				
J301S	—	√	—				
J301U	√	—	√				
J301SU	—	√	—				
J302	√	—	—	—	√		—
J302S	—	√	—				
J302U	√	—	√				
J302SU	—	√	—				
J306	√	—	—	—	—		√
J306S	—	√	—				
J306U	√	—	√				
J306SU	—	√	—				
Control PCB 1#			Control PCB 2#		Control PCB 3#		
							



广东旺家智能机器人有限公司  
Guangdong WangJia Intelligent Robot Co. LTD.



Remark: Control PCB 1# and control PCB 2# are same except PCB layout.

<<Product>>: Robotic Vacuum Cleaner

<<Main Test Model>>: J300; J300S; J306; J306U

<<Additional Model>>: J300U; J300SU; J301; J301S; J301U; J301SU; J302; J302S; J302U; J302SU; J306; J306S

FCC ID: 2AVYJ-J300

Applicant: Guangdong Wangjia Intelligent Robot Co., Ltd.

2021.3.24

(Date)

  
Jia Jia Jia  
(Applicant's authorized signature and company Chop)