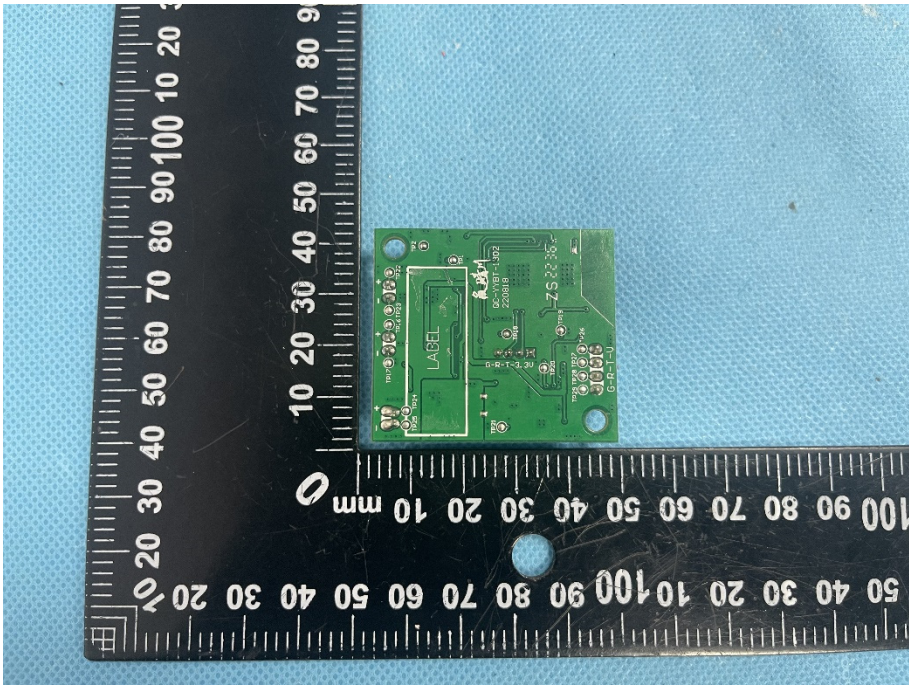
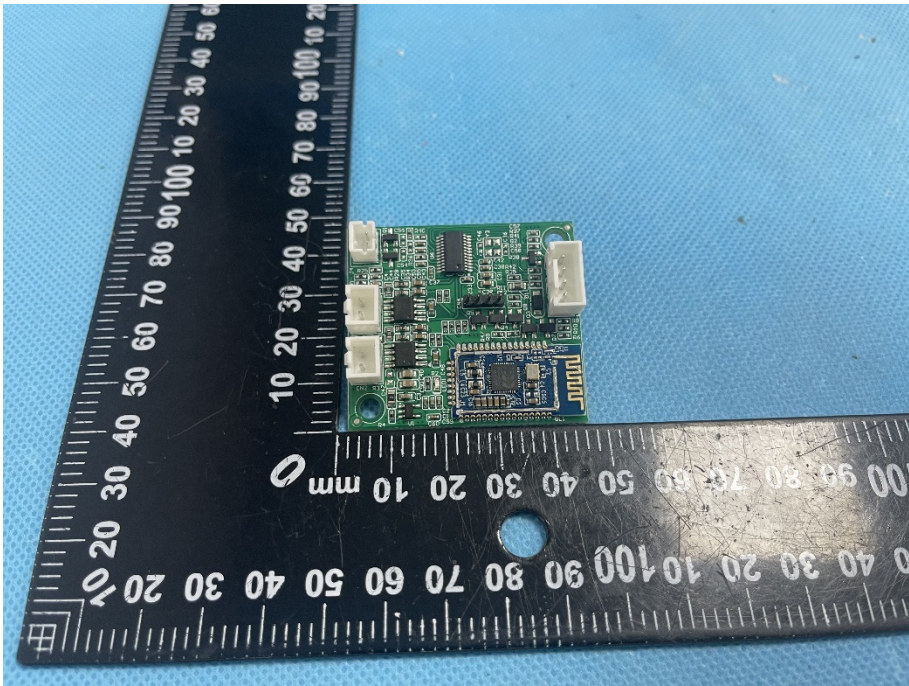
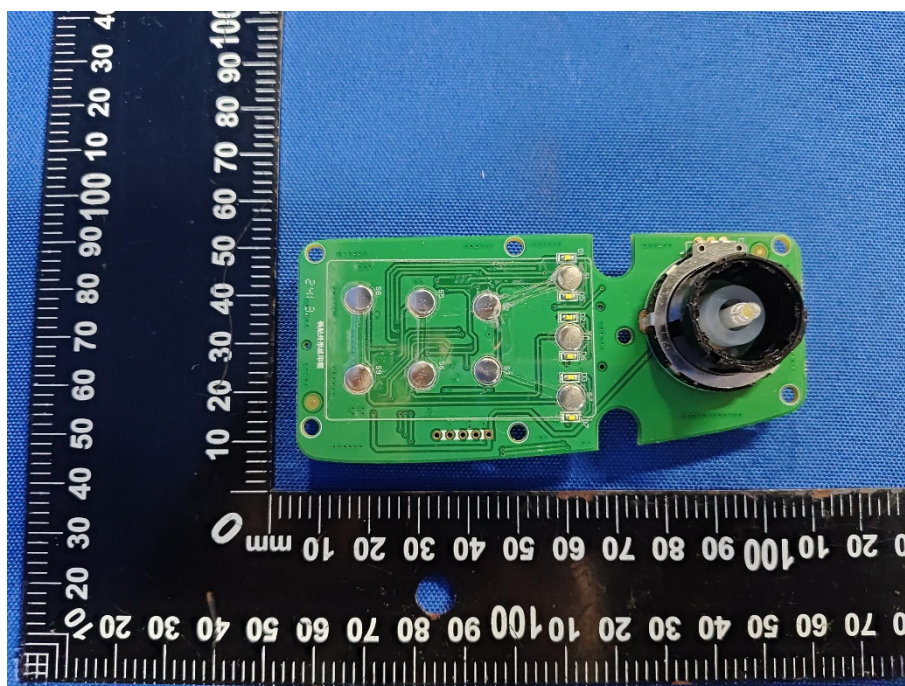


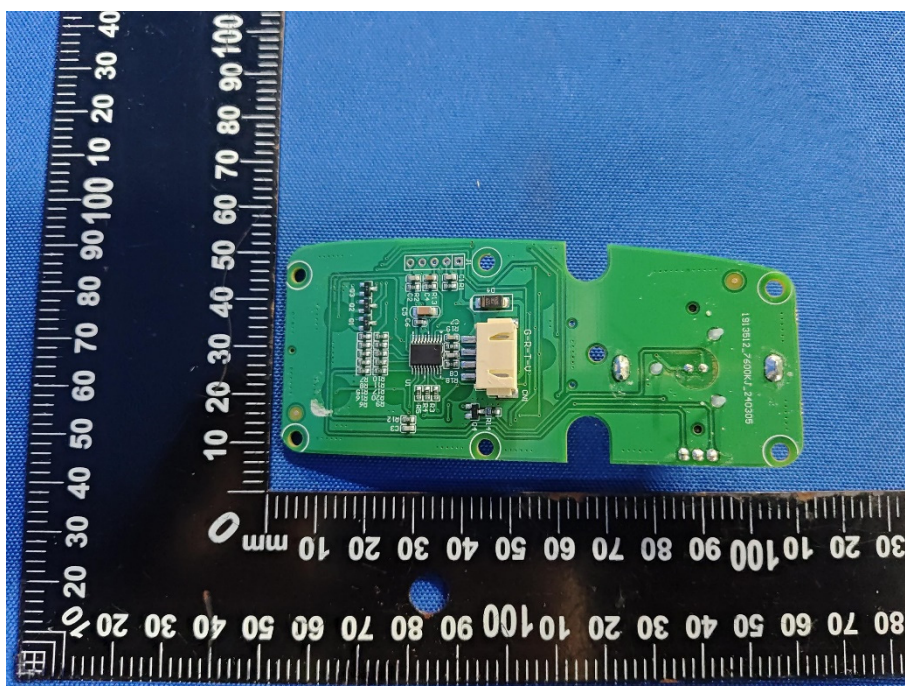
<p><b>Solder Board-Component View 8</b></p>	 A photograph of a green printed circuit board (PCB) component, labeled 'Solder Board-Component View 8'. The component is rectangular and features various electronic components, including a central integrated circuit (IC) labeled 'ZS 22 36', several resistors, and a capacitor. A white label with the word 'LABEL' is visible on the board. The component is placed on a blue textured surface next to a black ruler with white markings in millimeters. The ruler shows the component is approximately 100 mm long and 30 mm wide.
<p><b>Solder Board-Component View 9</b></p>	 A photograph of the same green PCB component, labeled 'Solder Board-Component View 9'. This view shows the component from a different angle, highlighting its profile and the presence of two white plastic connectors on the left side. The component is placed on a blue textured surface next to a black ruler with white markings in millimeters. The ruler shows the component is approximately 100 mm long and 30 mm wide.



**Solder  
Board-Component  
View 10**

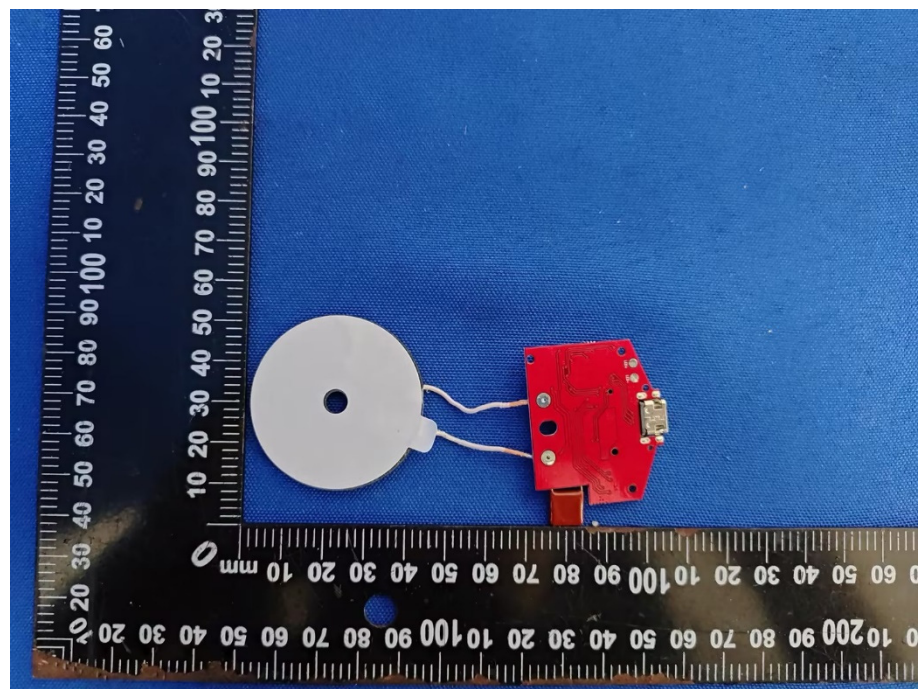


**Solder  
Board-Component  
View 11**

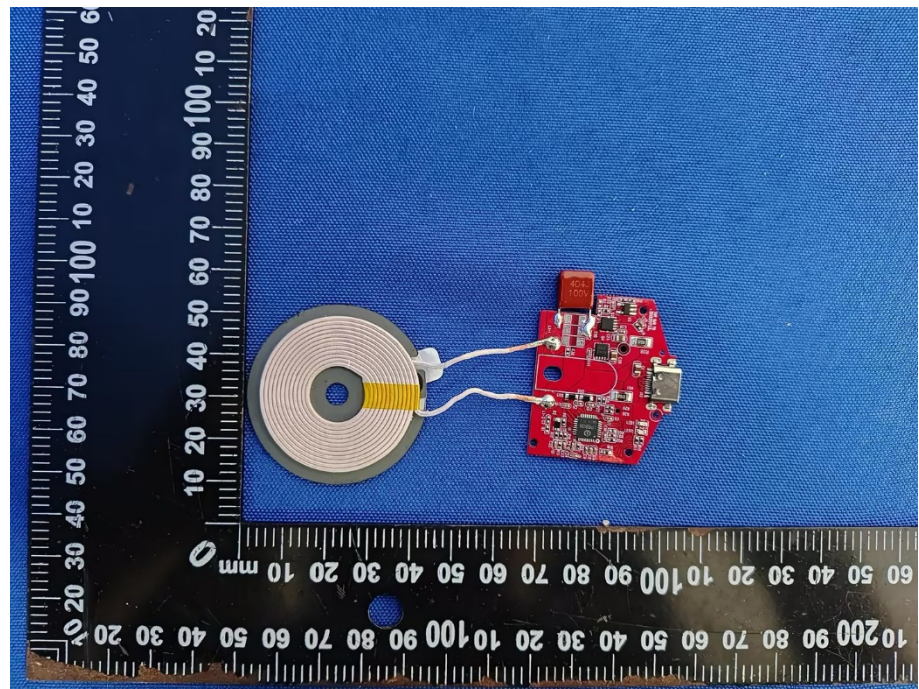




**Solder  
Board-Component  
View 12**

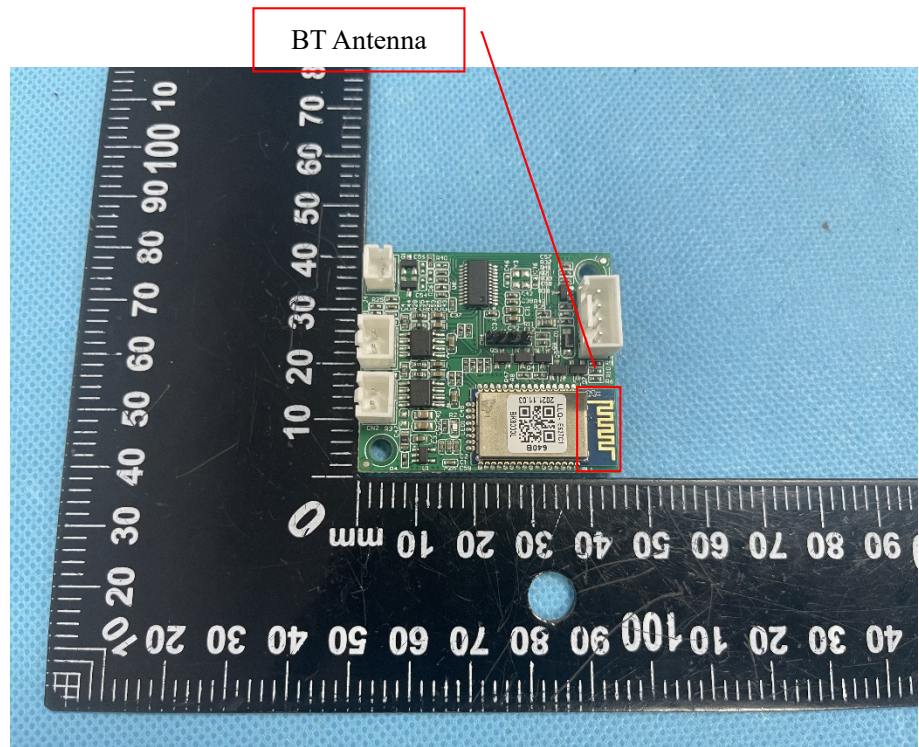


**Solder  
Board-Component  
View 13**





Antenna View 1



Antenna View 2

