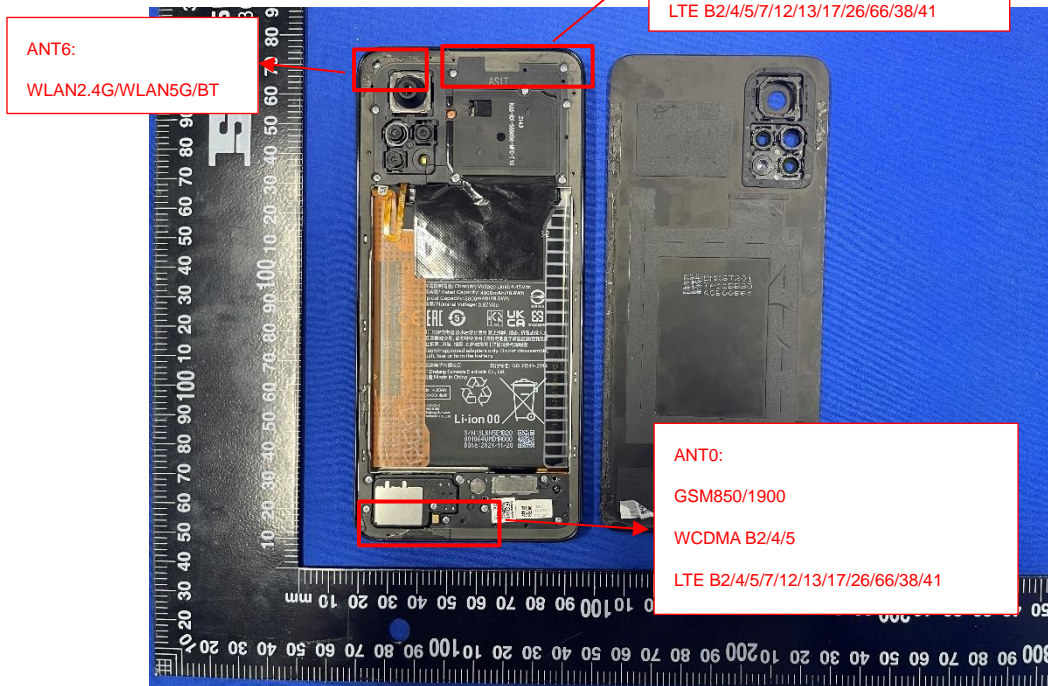
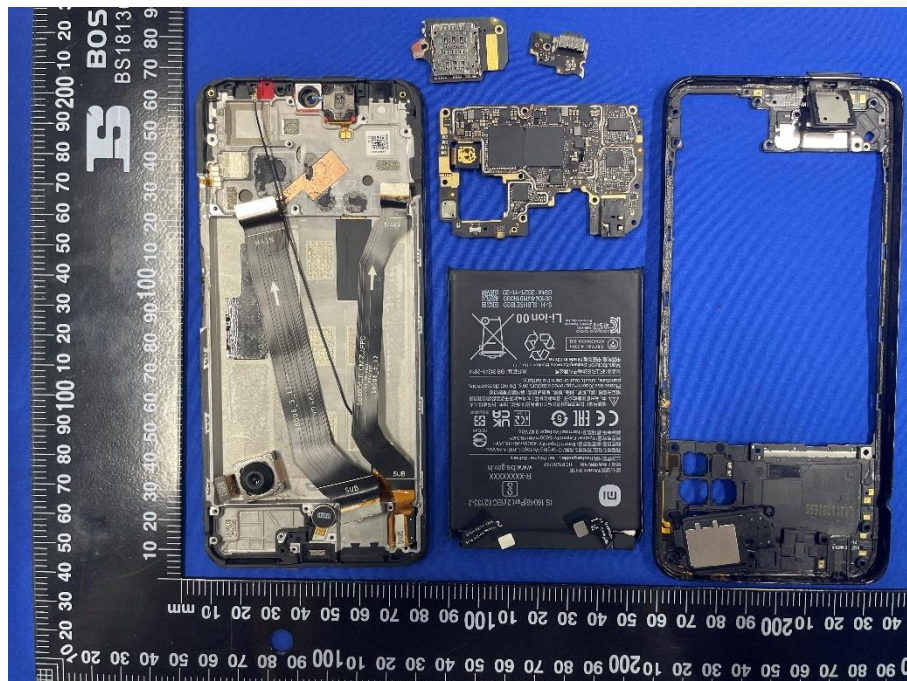


EUT INTERNAL PHOTOS

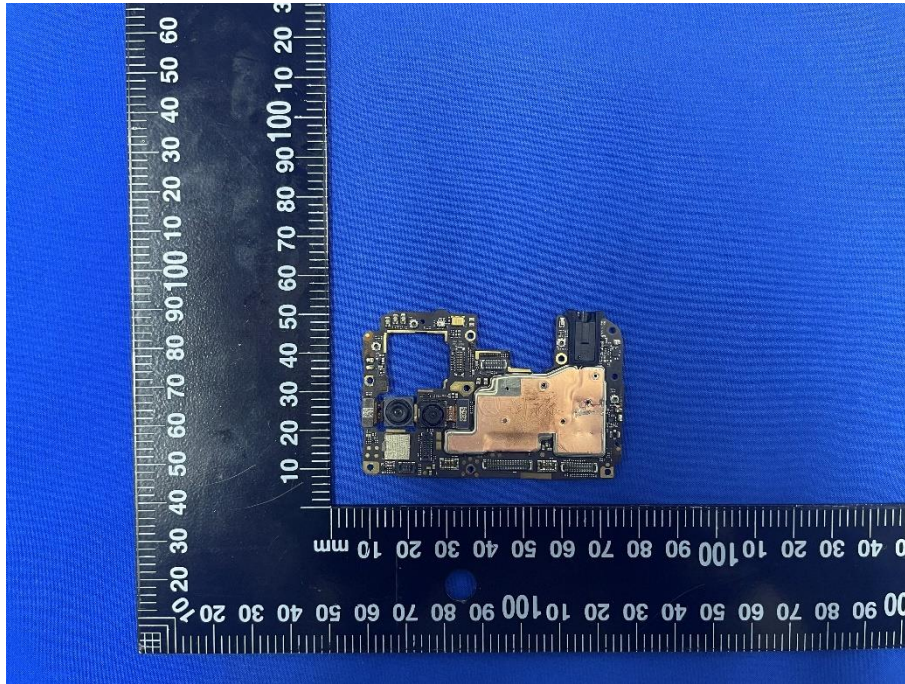
EUT UNCOVER VIEW



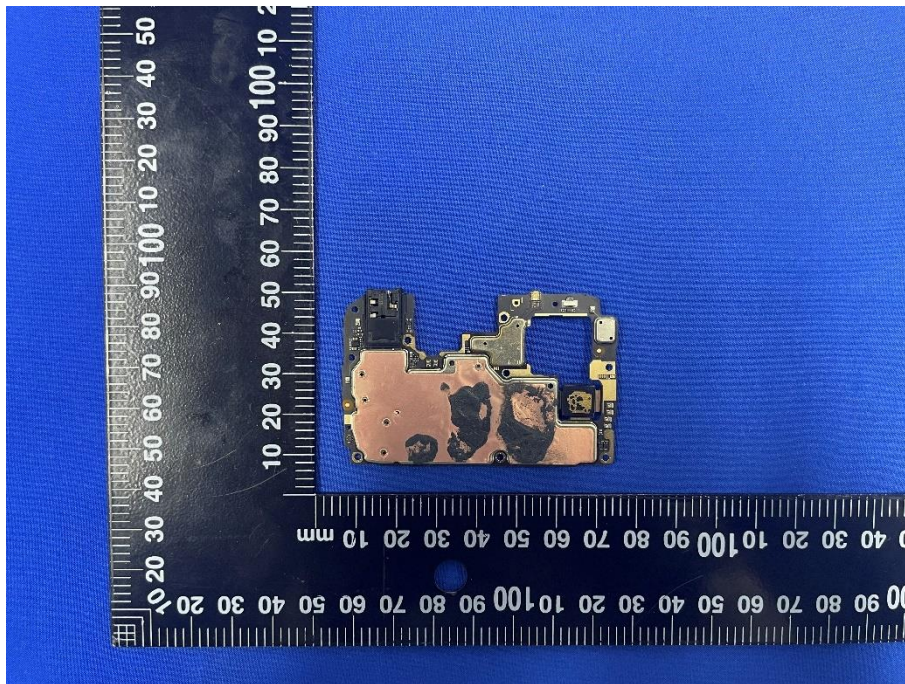
EUT UNCOVER VIEW



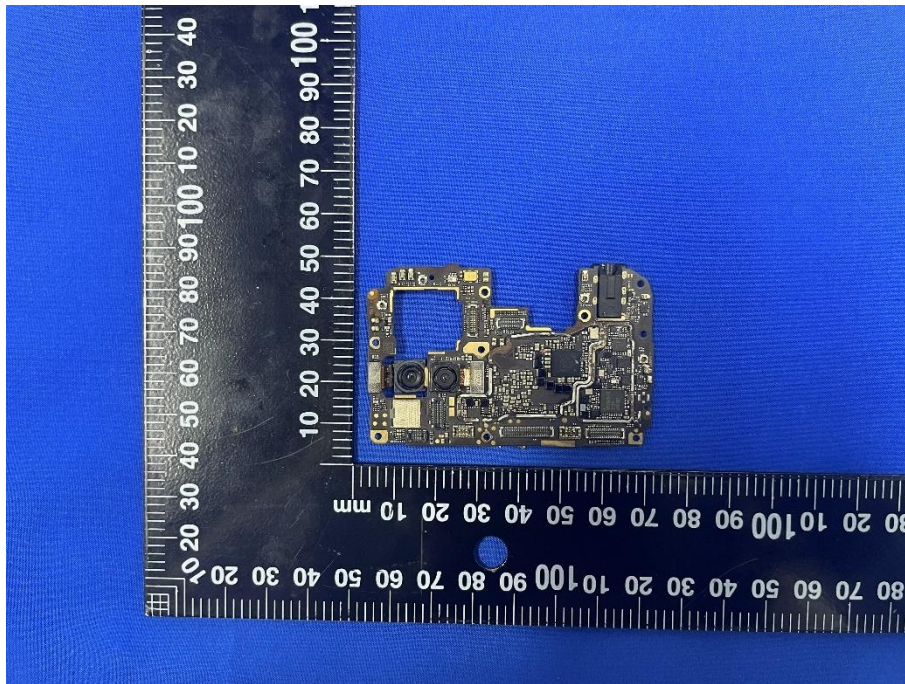
MAIN BOARD TOP VIEW (WITH SHIELDING)



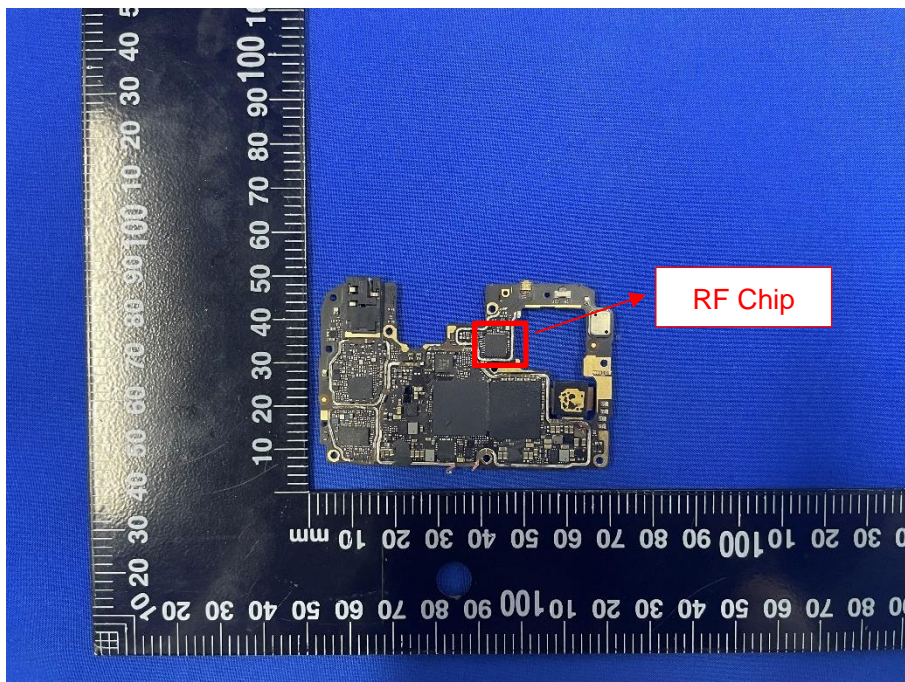
MAIN BOARD REAR VIEW (WITH SHIELDING)



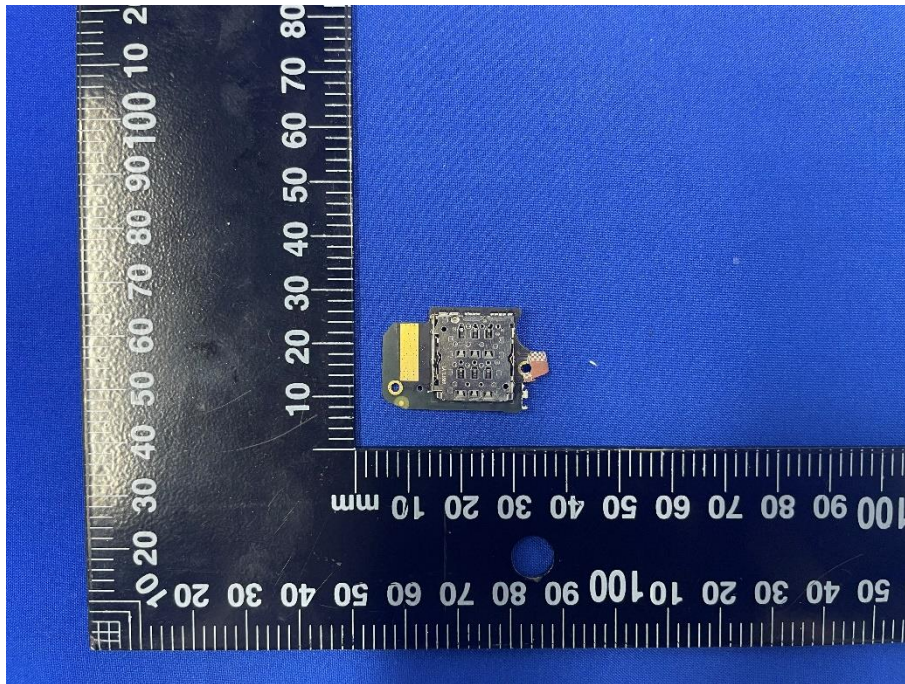
MAIN BOARD TOP VIEW (WITHOUT SHIELDING)



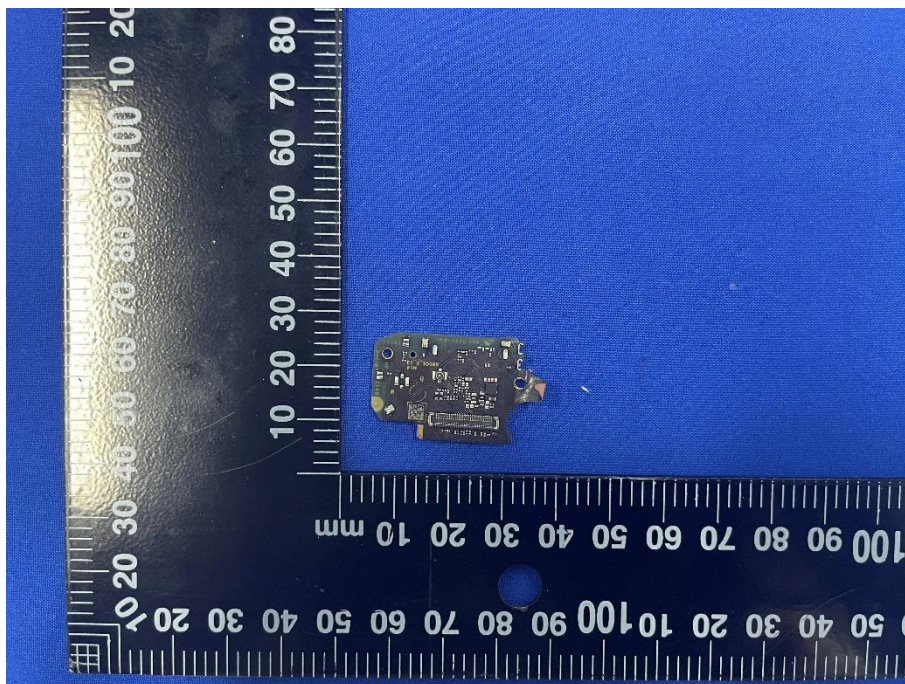
MAIN BOARD REAR VIEW (WITHOUT SHIELDING)



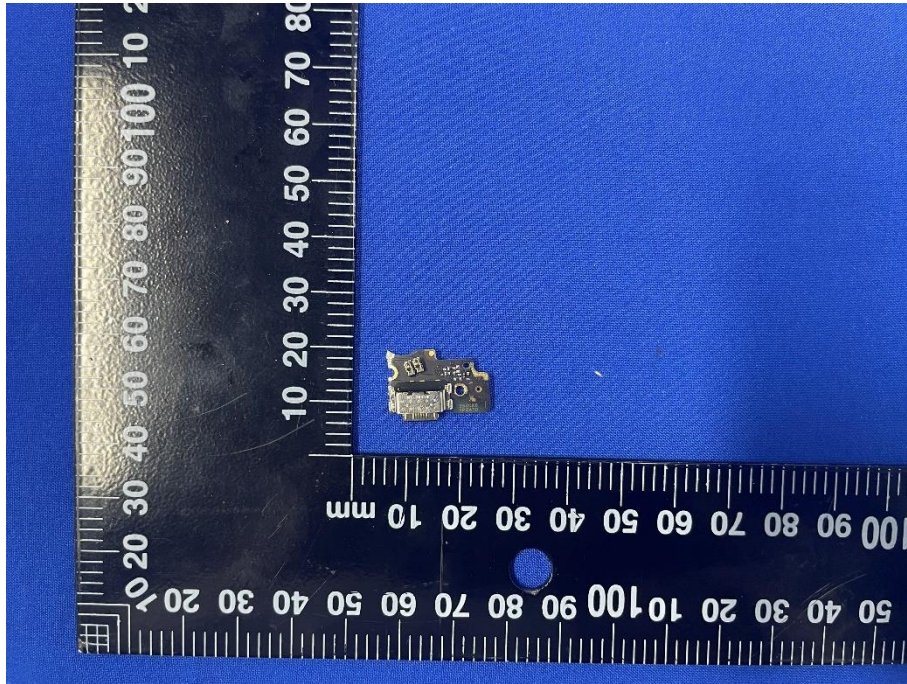
SECONDARY BOARD TOP VIEW 1



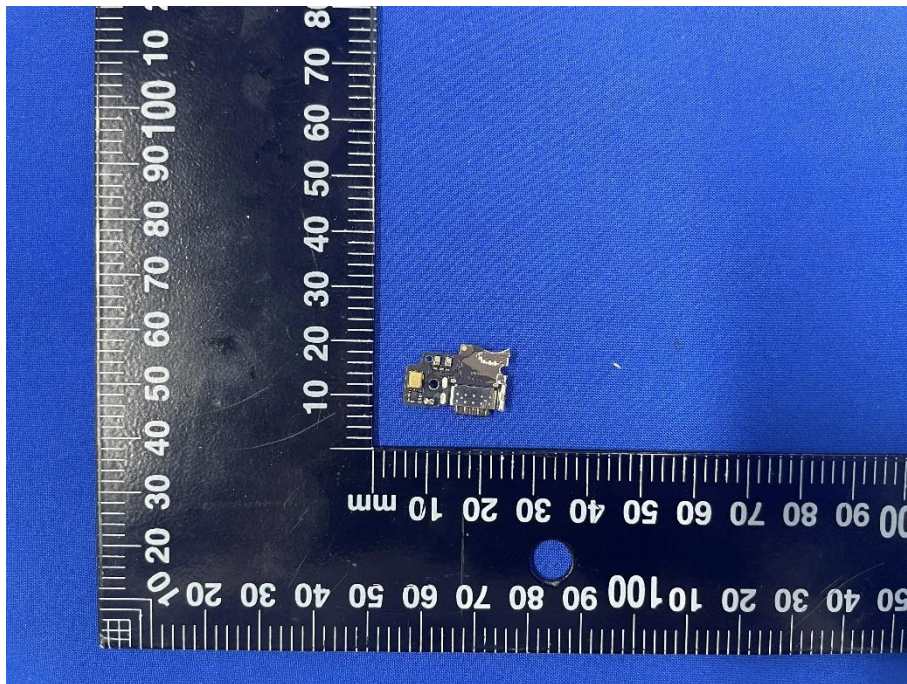
SECONDARY BOARD REAR VIEW 1



SECONDARY BOARD TOP VIEW 2



SECONDARY BOARD REAR VIEW 2



IS 18046 (Part 2) IEC 62133-2

R400000000

www.dhs.gov.cn

型号: IS18046 (Part 2) IEC 62133-2

制造商: 常州普华电子有限公司 Chang-gang Valipac Limited

额定容量: 1500mAh (Typical Capacity: 1500mAh)

额定电压: 3.7V (Nominal Voltage: 3.7V)

CE ENEC

Li-ion 00

S/N: 218N5E1E20

00104600000000

Date: 2020-11-20

A black, rectangular, flexible electronic component, likely a battery or capacitor, is shown next to a ruler for scale. The component has some faint, illegible markings on its surface. The ruler is marked in centimeters and millimeters.

[illegible]

A black rectangular battery is shown on a blue textured background. A ruler is placed horizontally above the battery, showing measurements in centimeters (0 to 100) and millimeters (0 to 200). The battery has a white label with the text "3.8V", "1040 515", and a QR code. The battery is connected to a small white component on the left side.