

iBTW41 - QSG (English)
Size: 700 x 160 mm (unfold), 140 x 160 mm (folded)
Color: 1C + 1C
material: 157gsm, art card, 1C + 1C,
April 14, 2021-v1

Front Cover



iHome

Model: iBTW41

TIMEBOOST

Bluetooth Speaker + Wireless Charger



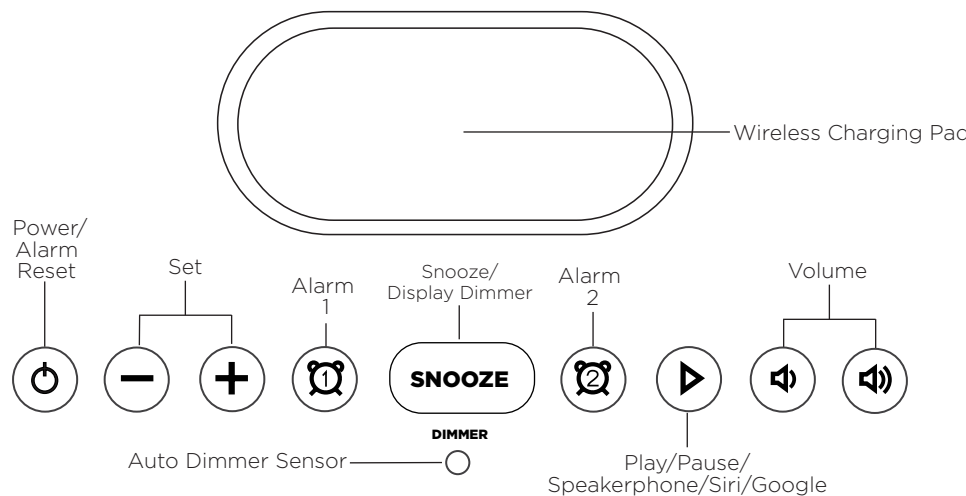
Quick Start Guide

1 YEAR WARRANTY For warranty visit:
www.ihome.com/support

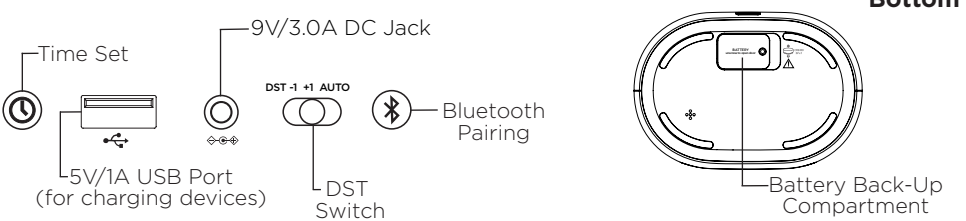
What's Included: iBTW41 unit AC adapter

Meet Your iHome TimeBoost iBTW41

Top



Back



Bottom*

*Remove battery pull tab before use

Quick Set-Up:

Step One Connecting the Unit

Connect the included AC adapter to the DC jack located on the back of the unit and connect the other end to a working wall outlet.

Step Two Bluetooth Pairing

- Turn on your Bluetooth device and make it 'discoverable' by turning on Bluetooth mode.
- Press the **Power Button** on the iBTW41.
- Press and hold the **Bluetooth Pairing Button** on the back of the iBTW41 until the Bluetooth Pairing Icon flashes to indicate the unit is in pairing mode.
- Select 'iHome Timeboost' on your device's Bluetooth menu to connect!

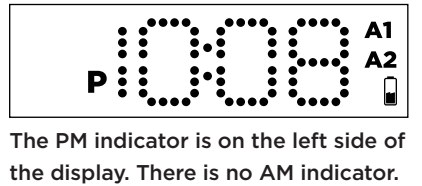
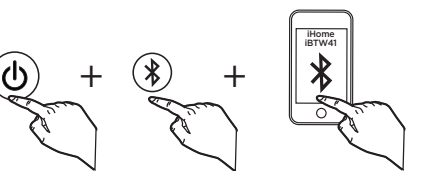
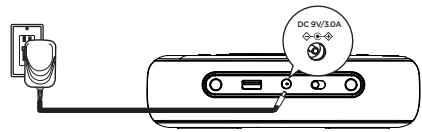
Step Three Setting Your Clock

- Press and hold the **Time Set Button** until the display flashes.
- Press the **-** or **+** Buttons to adjust selections and tap **Time Set** to confirm (make sure you set the correct AM/PM time).
- Do this for time, year, month and date.
- All done!

Daylight Savings Time:

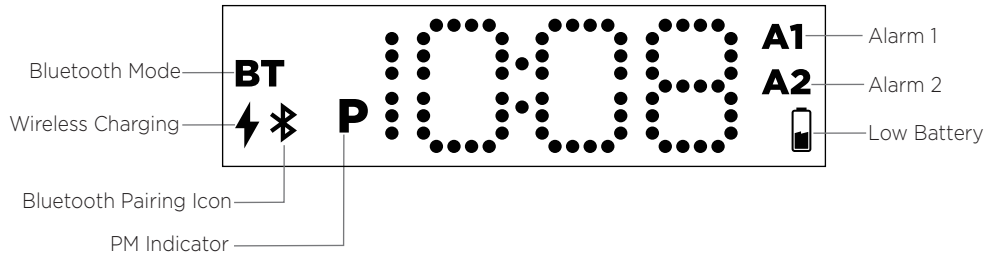
By default, the **DST Switch** is set to Auto and will automatically adjust the time in March and November.

Tip: Press the **Alarm 1 Button** during clock setting to toggle the clock between 12/24 hour display modes.



The PM indicator is on the left side of the display. There is no AM indicator.

The Display



Using Qi Wireless Charging

This unit will wirelessly charge Qi compatible wireless charging phones. Place Qi compatible device face up on charging pad.

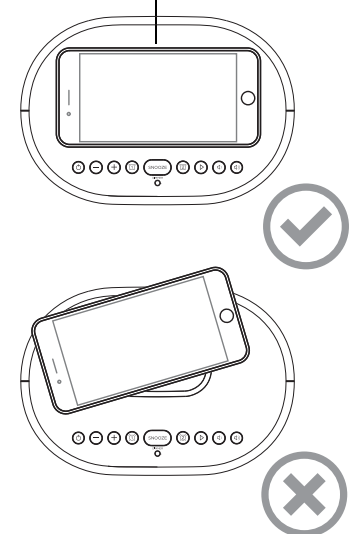
Check the lightning icon ⚡ on the iBTW41 display for charging status:

- Slow blinking ⚡ icon:** Device is charging properly.
- Solid ⚡ icon:** Device is charged.
- Rapid blinking ⚡ icon:** Device is not charging properly. Reposition device.

Note: The lightning icon may continue to blink slowly when iOS devices are fully charged.

CAUTION: Remove metal protective or magnetic case from phone before charging. When charging phone, do not place magnetic-stripped or other metal objects on the charger. Doing so could damage the object or this unit. Qi compatible phones with metallic looking finishes will charge normally.

Charge Your Phone Here:



Setting and Using the Alarms

This unit features dual alarms which can be set to different times and alarm sources. Each is set in the same way. Instructions are given as "Alarm Button"; use **Alarm 1 Button** or **Alarm 2 Button** to set respective alarms. **Note:** Each step must be completed while display is flashing or setting will time-out with any changes saved.

- Press and hold the **Alarm Button** for 2 seconds until the display flashes. A beep sounds.
- Press the **-** or **+** Buttons to adjust the alarm time to the desired time (hold for rapid setting). Make sure you set the correct AM/PM alarm time. The PM indicator appears to the left of the display.
- Press the **Alarm Button** to confirm the alarm time setting. The alarm schedule will flash: 7 (every day), 5 (weekdays) or 2 (weekend only). Press the **-** or **+** Buttons to select the desired alarm schedule.
- Press the **Alarm Button** to confirm the alarm schedule. The wake-to source will flash.
- Press the **-** or **+** Buttons to select the desired wake-to alarm source: Bluetooth or Tone.

Wake to Bluetooth: You will wake to the currently linked Bluetooth device. If no device is detected, the alarm will default to the last tone selected.

Wake to Tone: Press the **Alarm Button** to confirm. Press the **-** or **+** Buttons to select the desired tone to wake to (Tone 1 -Tone 4).

- Press the **Alarm Button** to confirm wake-to source. The alarm volume will flash.
- Press the **-** or **+** Buttons to adjust the alarm volume.
- Press the **Alarm Button** to confirm the alarm settings and exit alarm setting mode. 2 beeps will confirm alarm setting is complete. The alarm icon will remain on the display, to show the alarm is armed.

Previewing the Alarm and Turning the Alarm On/Off

- Press and release the **Alarm Button** to view the current alarm time.
- Press the **Alarm Button** to toggle the alarm ON and OFF, indicated by the related white alarm indicator.
- When the alarm sounds, press the **Power/Alarm Reset Button** or the corresponding **Alarm Button (1 or 2)** to disable the alarm and reset it to come on at the same time the next day.

Snooze/Display Dimmer

- Snooze:** When the alarm is sounding, press the **Snooze/Dimmer Button** to snooze for 9 minutes.
- Dimmer:** Press the **Snooze/Dimmer Button** (when alarm is NOT sounding) to adjust display brightness.

Programmable Snooze

- To adjust the snooze duration:
- Press and hold the **Snooze/Dimmer Button**.
 - Use the **+** or **- Buttons** to adjust the snooze duration from 1-29 minutes. Press the **Snooze/Dimmer Button** again to confirm.

Display Auto-Dimmer

This unit is equipped with a sensor that will automatically adjust the brightness of the clock display based on ambient light in your room. When the room is well lit, the display will adjust to Hi brightness for better visibility. In a dark room, it will dim to a lower brightness. You can adjust the "lower limit" of the Auto-dimmer to fit your personal preference of display brightness in a dark room.

The 3 options are:

- "Auto 2"** - minimum brightness setting will be level 2
- "Auto 1"** - minimum brightness setting will be level 1
- "Auto 0"** - clock display will turn FULLY OFF in a dark room

To adjust Dimmer settings:

Press the **Snooze/Dimmer Button** repeatedly to cycle through brightness levels: Auto 1, Auto 2, Auto 0, Hi, 3, 2, 1, or OFF. (Note: choosing **Hi**, **3**, **2**, **1**, or **OFF** are fixed settings and will not auto-adjust.)

Manual Bluetooth Pairing

- Press and hold the **Bluetooth Pairing Button** on the back of the iBTW41 for 2 seconds.
- Select 'iHome Timeboost' on your device's Bluetooth menu to connect.
- If pairing is successful, the Bluetooth indicator appears solid on the clock display, indicating the iBTW41 is ready to play music.
- To reset Bluetooth settings, press and hold the **Bluetooth Pairing Button** for 10 seconds.

Playing Audio Via Bluetooth

Press the **Play/Pause/Speakerphone Button** on the unit to play or pause audio from your linked Bluetooth device.

Using the Speakerphone

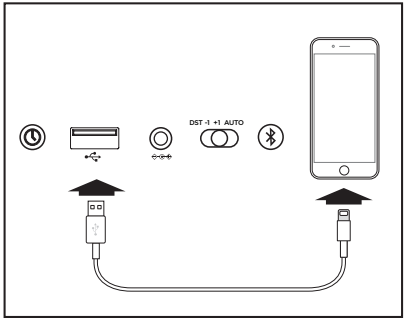
- The iBTW41 must be ON and connected to a Bluetooth device in order to receive calls.
- Press the **Play/Pause/Speakerphone Button** to accept an incoming call.
 - Press and hold to end or ignore a call.

Using Voice Commands

- The iBTW41 must be ON and connected to a Bluetooth device to use voice commands.
- Press and hold the **Play/Pause/Speakerphone Button** for 2 seconds to activate Siri or Google Assistant.

Charging Devices Via USB Port

- Connect the standard size end of a USB cable (not included) to the USB port on the back of the unit and connect the other end to the charging port on your device.

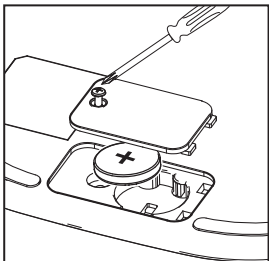


NOTE: Unit must be plugged into working outlet to charge devices.

Battery Back-Up

The unit comes with a CR-2450 back-up battery installed to provide continuous alarm operation and clock settings in the event of a temporary power failure. Remove the battery pull tab before use. When the battery icon on the clock display is flashing, it is time to replace the back-up battery. The battery compartment is located on the bottom of the unit.

- Make sure the AC adapter is connected, or you will lose your time and alarm settings during battery replacement.
- Use a Phillips screwdriver to open the battery compartment door.
- Remove the exhausted battery from the compartment and insert 1 CR-2450 battery, checking that the **+** side is facing you. Replace the compartment door. Do not overtighten.



WARNING: Lithium batteries can explode or cause burns if disassembled, shorted, recharged, exposed to water, fire, or high temperatures. Do not place loose batteries in a pocket, purse, or other container containing metal objects, mix with used or other battery types, or store with hazardous or combustible materials. Store in cool, dry, ventilated area. Follow applicable laws and regulations for transport and disposal.

WARNING

- Do not ingest the battery, Chemical Burn Hazard. This product contains a coin/button cell battery. If the coin/button cell battery is swallowed, it can cause severe internal burns in just 2 hours and can lead to death.
- Keep new and used batteries away from children. If the battery compartment does not close securely, stop using the product and keep it away from children. If you think batteries might have been swallowed or placed inside any part of the body, seek immediate medical attention."
- CAUTION - RISK OF EXPLOSION IF BATTERY IS REPLACED BY AN INCORRECT TYPE. DISPOSE OF USED BATTERIES ACCORDING TO THE INSTRUCTIONS.

Maintenance

- Place the unit on a level surface away from sources of direct sunlight or excessive heat.
- Protect your furniture when placing your unit on a natural wood and lacquered finish. A cloth or other protective material should be placed between it and the furniture.
- Clean your unit with a soft cloth moistened only with mild soap and water. Stronger cleaning agents such as thinner or similar materials can damage the surface of the unit.

IMPORTANT SAFETY INSTRUCTIONS

Please heed all warnings, read and follow all instructions and keep these instructions handy for future reference.

- Do not use this product near water, and clean only with dry cloth.
- Do not block any ventilation openings. Install in accordance with the manufacturer's instructions.
- Heat - This product should be situated away from heat sources such as radiators, heat registers, stoves or other appliances (including amplifiers) that produce heat.
- Only use attachments/accessories specified by the manufacturer.
- Unplug this product during lightning storms or when unused for long periods of time.
- Damage Requiring Service - This product should be serviced by qualified service personnel when:
 - Plug has been damaged.
 - Objects have fallen into or liquid has been spilled into the enclosure.
 - The unit has been exposed to rain. The unit has been dropped or the enclosure damaged.
 - The unit exhibits a marked change in performance or does not operate normally.
- No naked flame sources, such as lighted candles, should be placed on this product.
- Attention should be drawn to the environmental aspects of battery disposal.
- This product is suitable for use in tropical and/or moderate climates.
- WARNING: To reduce the risk of fire or electric shock, do not expose this product to rain or moisture.
- Do not dispose of batteries in the household trash or fire.
- The mains plug of power adaptor is used as the disconnect device, it shall remain readily operable.

FCC INFORMATION

This equipment complies with FCC RF radiation exposure limits set forth for an uncontrolled environment. This device complies with Part 15 of the FCC Rules, operation is subject to the following two conditions: (1) This device may not cause harmful interference, and (2) this device must accept any interference received, including interference that may cause undesired operation.

- Warning: Changes or modifications to this unit not expressly approved by the party responsible for compliance could void the user's authority to operate the equipment.
- NOTE: This equipment has been tested and found to comply with the limits for a Class B digital device, pursuant to Part 15 of the FCC Rules.

These limits are designed to provide reasonable protection against harmful interference in a residential installation. This equipment generates, uses and can radiate radio frequency energy and, if not installed and used in accordance with the instructions, may cause harmful interference to radio communications. However, there is no guarantee that interference will not occur in a particular installation. If this equipment does cause harmful interference to radio or television reception, which can be determined by turning the equipment off and on, the user is encouraged to try to correct the interference by one or more of the following measures:

- Reorient or relocate the receiving antenna.
- Increase the separation between the equipment and receiver.
- Connect the equipment into an outlet on a circuit different from that to which the receiver is connected.
- Consult the dealer or an experienced radio/TV technician for help.

This equipment should be installed and operated with minimum distance 20cm between the radiator & your body.

iBTW41-052520-A(EN)

Printed in China

© 2021 SDI Technologies, Inc. All rights reserved.
Questions? Visit www.ihome.com