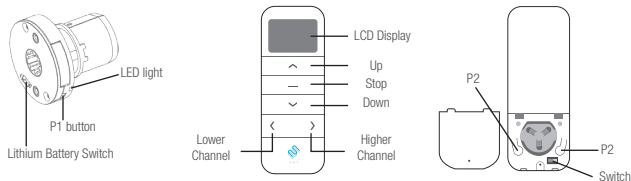


## Button Instructions

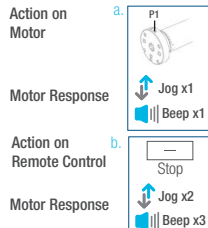


## Essential Settings

The steps in factory mode must be completed to ensure proper operation.

### 1. Pair / Unpair Remote Control

- a. Press **"P1"** button (about 2 sec) on the motor head until motor jog x1 and beep x1.
- b. In the next 10 secs, press and hold **"Stop"** button on the remote control until motor jog x2 and beep x3.

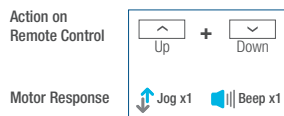


\* Repeat the same procedure to unpair remote control.

### 2. Change Motor Direction (if necessary)

Press **"Up"** or **"Down"** button to check if the shade moves in the desired direction.

If you need to reverse the direction, press and hold (about 2 sec) **"Up"** and **"Down"** buttons simultaneously until motor jog x1 and beep x1.

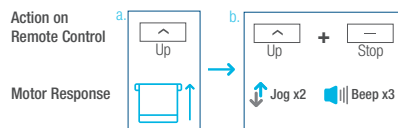


\*The operation is only valid when there are no limits. If the motor has already set the upper and lower limit, then you can only switch direction by pressing P1 button (See P1 button instructions).

### 3. Setting the Upper and Lower Limits

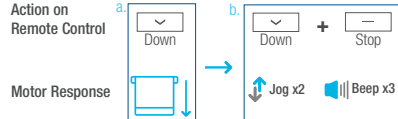
#### 3.1 Set Upper Limit

- a. Press **"Up"** button to raise the shade, then press **"Stop"** button when it is in the desired upper limit.
- b. Press and hold (about 2 sec) **"Up"** and **"Stop"** buttons simultaneously until motor jog x2 and beep x3.



#### 3.2 Set Lower Limit

- a. Press **"Down"** button to lower the shade, then press **"Stop"** button when it is in the desired lower limit.
- b. Press and hold (about 2 sec) **"Down"** and **"Stop"** buttons simultaneously until motor jog x2 and beep x3.



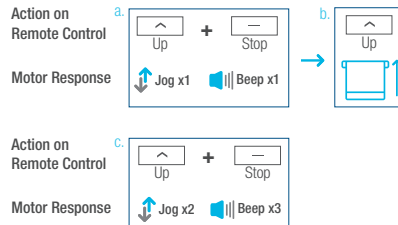
\*If you exit the limit setting status before you finish the limit settings, the motor will take the previous existing limits.

Factory Mode Complete  
User Mode Begins

### 4. Adjust Limits

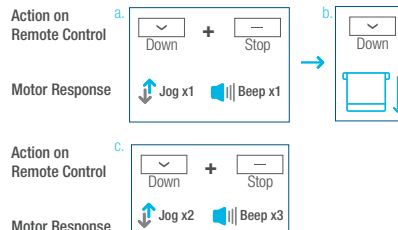
#### 4.1 Adjust the Upper Limit

- a. Press and hold (about 5 sec) **"Up"** and **"Stop"** buttons simultaneously until motor jog x1 and beep x1.
- b. Use **"Up"** button to raise the shade to the desired highest position, and use **"Up"** or **"Down"** button to do the final adjustment if necessary.
- c. Press and hold (about 2 sec) **"Up"** and **"Stop"** buttons simultaneously until motor jog x2 and beep x3.



#### 4.2 Adjust the Lower Limit

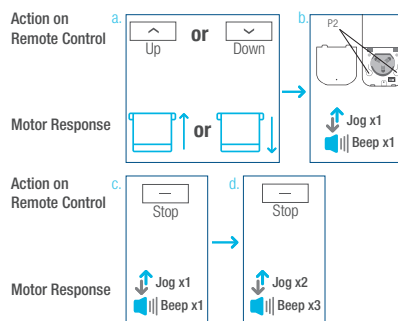
- a. Press and hold (about 5 sec) **"Down"** and **"Stop"** buttons simultaneously until motor jog x1 and beep x1.
- b. Use **"Down"** button to lower the shade to the desired lowest position, and use **"Up"** or **"Down"** button to do the final adjustment if necessary.
- c. Press and hold (about 2 sec) **"Down"** and **"Stop"** buttons simultaneously until motor jog x2 and beep x3.



### 5. Favorite Position

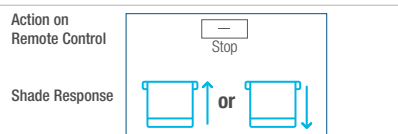
#### 5.1 Set Favorite Position

- a. Use **"Up"** or **"Down"** button to move the shade to desired Favorite position.
- b. Press one **"P2"** button on the back of remote control until motor jog x1 and beep x1.
- c. Press and hold (about 2 sec) **"Stop"** button until motor jog x1 and beep x1.
- d. Once more, press and hold (about 2 sec) **"Stop"** button until motor jog x2 and beep x3.



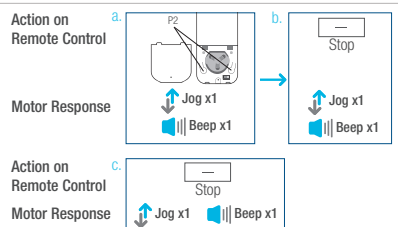
#### 5.2 Send Shade to Favorite Position

Press and hold (about 2 sec) **"Stop"** button, motor will move to Favorite position.



#### 5.3 Delete Favorite Position

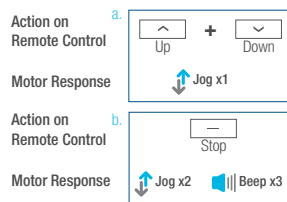
- a. Press one **"P2"** button until motor jog and beep x1.
- b. Press and hold (about 2 sec) **"Stop"** button until motor jog and beep x1.
- c. Once more, press and hold (about 2 sec) **"Stop"** button until motor jog x1 and long beep x1.



### 6. Roller Mode and Sheer Mode

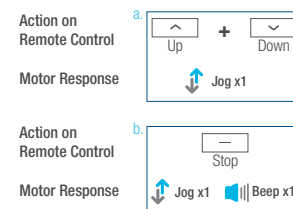
#### 6.1 Roller Shade Mode - continue movement after a short press - Default Mode

- a. Press and hold (about 5 sec) **"Up"** and **"Down"** buttons simultaneously until motor jog x1.
- b. Press and hold (about 2 sec) **"Stop"** button until motor jog x2 and beep x3.



#### 6.2 Sheer Shade Mode - jog movement after a short press (continue movement after a long press)

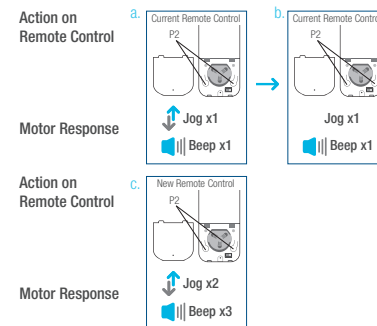
- a. Press and hold (about 5 sec) **"Up"** and **"Down"** buttons simultaneously until motor jog x1.
- b. Press and hold (about 2 sec) **"Stop"** button until motor jog x1 and beep x1.



### 7. Add or Remove Additional Remote

#### 7.1 Using Current Remote Control

- a. On the **current** remote control, press one **"P2"** button until motor jog x1 and beep x1.
- b. Once more, on the **current** remote control, press one **"P2"** button until motor jog x1 and beep x1.
- c. On the **New** remote control, press one **"P2"** button until motor jog x2 and beep x3.



\*Repeat the same procedure to remove additional remote control.

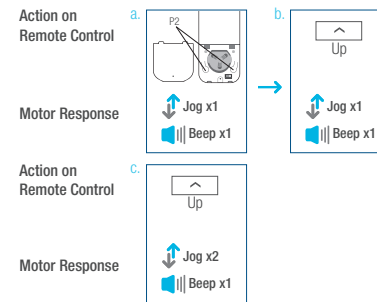
#### 7.2 New Remote Control

Follow instructions under the section 1. **Pair / Unpair Remote Control**

### 8. Adjust Motor Speed

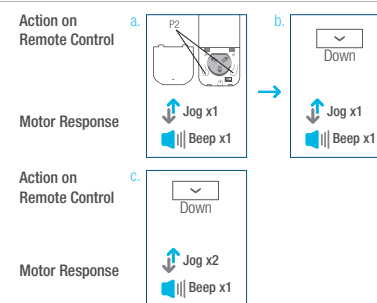
#### 8.1 Acceleration Speed

- a. Press one **"P2"** button until motor jog x1 and beep x1.
- b. Press **"Up"** button until motor jog x1 and beep x1.
- c. Once more, press **"Up"** button until motor jog x2 and beep x1.



#### 8.2 Deceleration Speed

- a. Press one **"P2"** button until motor jog x1 and beep x1.
- b. Press **"Down"** button until motor jog x1 and beep x1.
- c. Once more, press **"Down"** button until motor jog x2 and beep x1.



\*If the motor has no response, it already has a Maximum or Minimum speed.