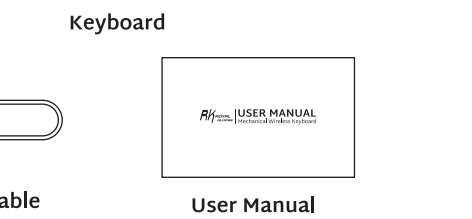
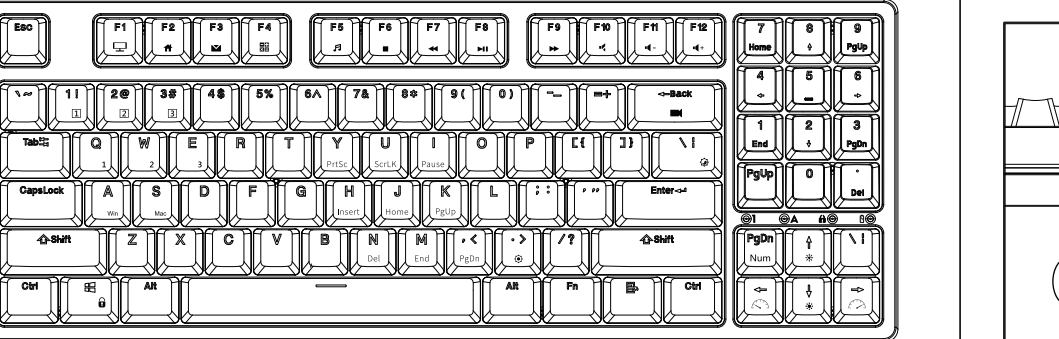
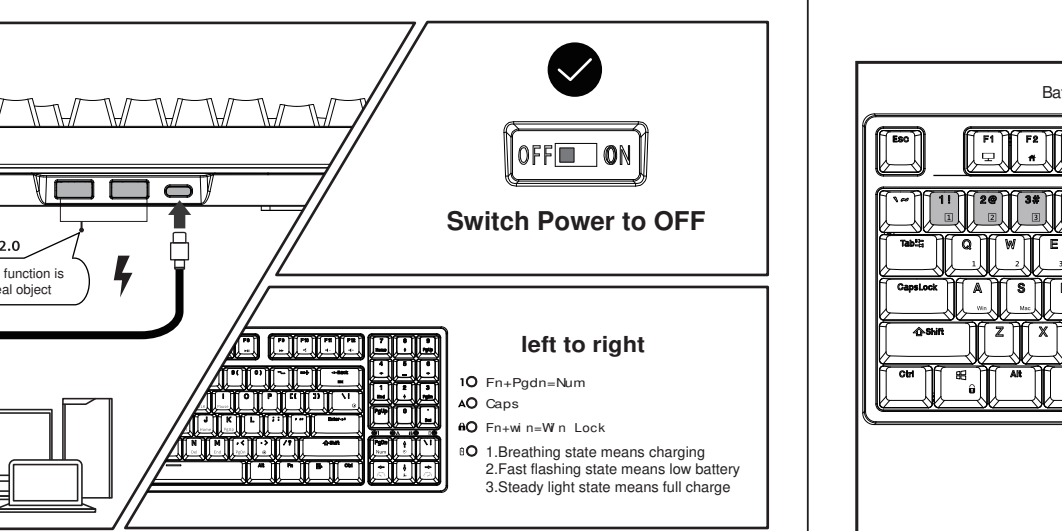


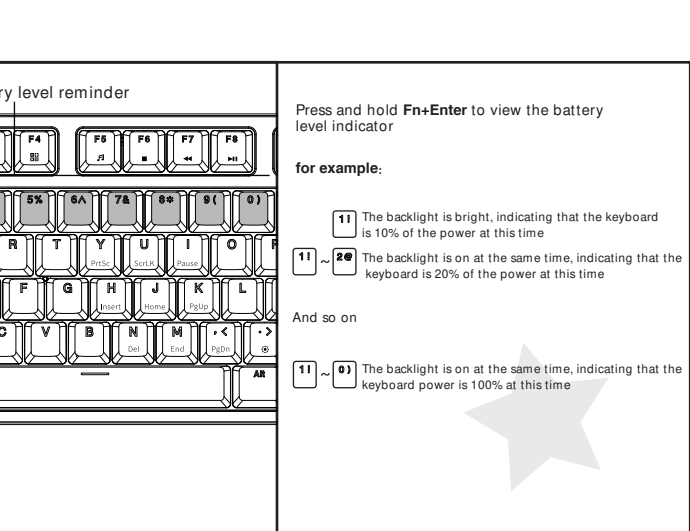
PRODUCT BASIC



WIRED MODE & INDICATOR FUNCTION

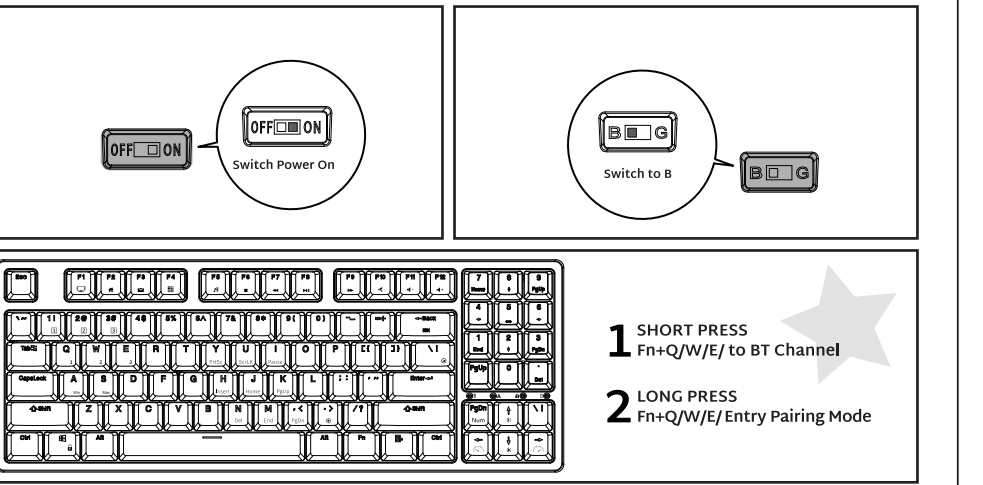


BATTERY REMINDER

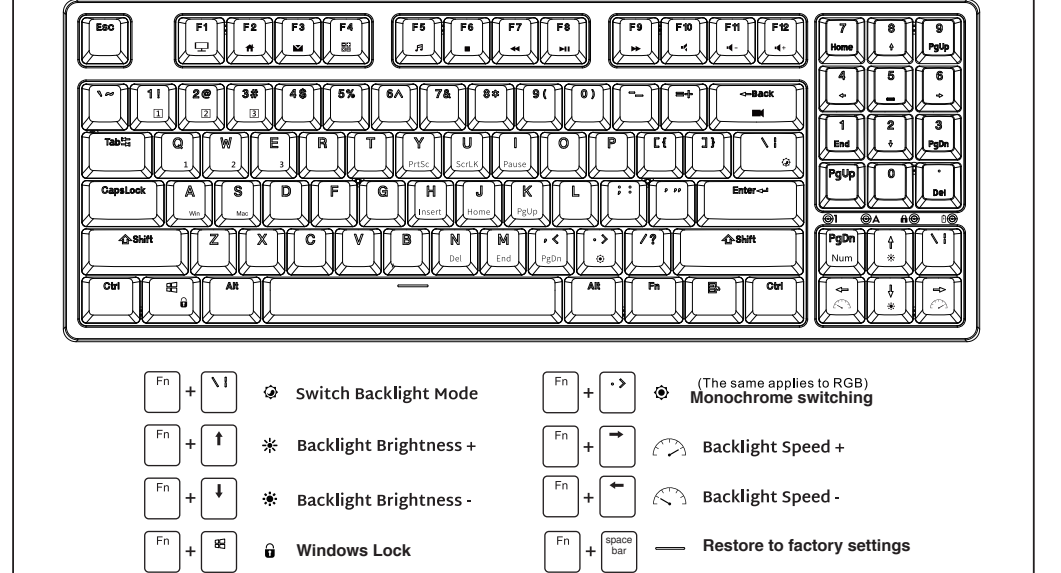


HOW TO USE

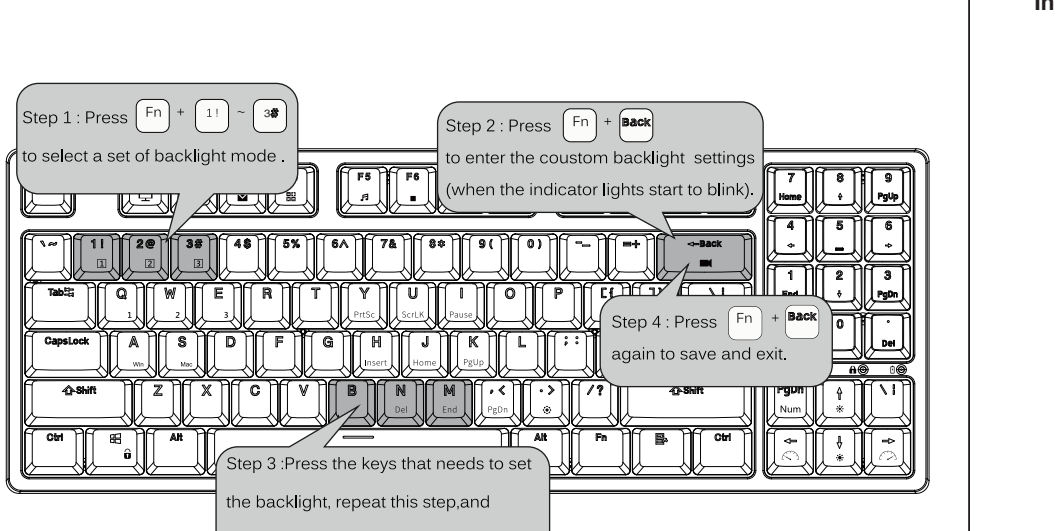
BT Connection



BACKLIGHT CONTROL

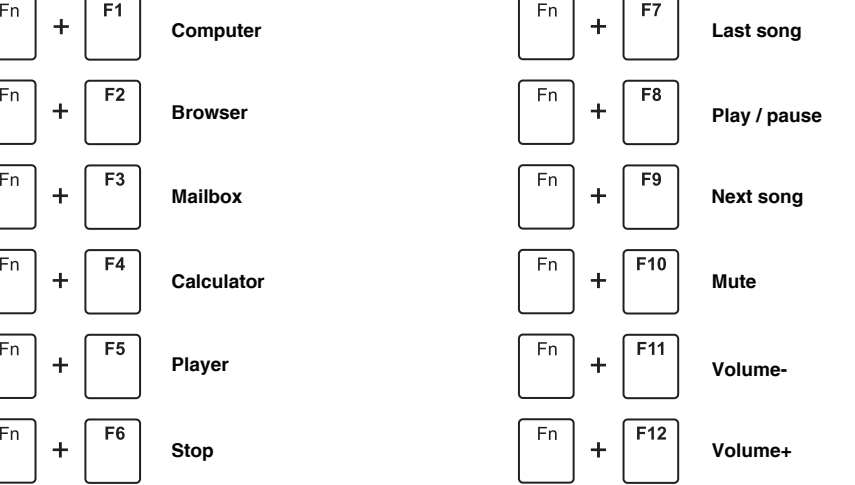


COUSTOM BACKLIGHT SET



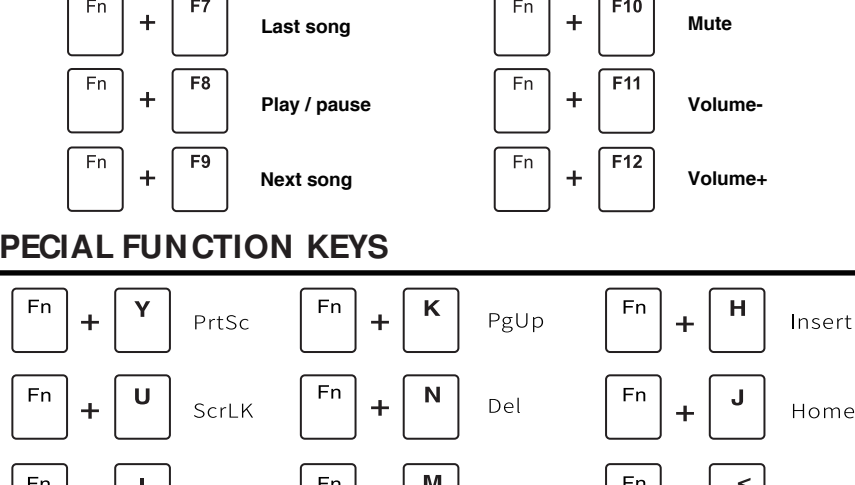
MULTIMEDIA KEY FOR WINDOWS

In Windows mode(FN + A: switch to Windows system)



MULTIMEDIA KEY FOR MAC

MAC system(FN + S: switch to MAC system)



SYSTEM REQUIREMENTS

Mode

- Device With Bluetooth5.1 or later
- PC: Windows 7 or Later
- Mac: macOS X 10.6 Snow Leopard or Later
- iOS: All iPads/iPhone 5 or Later
- Android: 5.0 Lollipop or Later

Have an issue with one of our RK products?

Feel free to contact us with any product issues or questions.
We will reply as quickly as possible to ensure all your needs are handled.
Please contact the seller

This device complies with Part 15 of the FCC Rules. Operation is subject to the following two conditions: (1) this device may not cause harmful interference, and (2) this device must accept any interference received, including interference that may cause undesired operation

NOTE: This equipment has been tested and found to comply with the limits for a Class B digital device, pursuant to Part 15 of the FCC Rules. These limits are designed to provide reasonable protection against harmful interference in a residential installation. This equipment generates, uses and can radiate radio frequency energy and, if not installed and used in accordance with the instructions, may cause harmful interference to radio communications. However, there is no guarantee that

interference will not occur in a particular installation.

If this equipment does cause harmful interference to radio or television reception, which can be determined by turning the equipment off and on, the user is encouraged to try to correct the interference by one or more of the following measures:

- Reorient or relocate the receiving antenna.
- Increase the separation between the equipment and receiver.
- Connect the equipment into an outlet on a circuit different from that to which the receiver is connected.
- Consult the dealer or an experienced radio/TV technician for help.

Warning: changes or modifications not expressly approved by the party responsible for compliance could void the user's authority to operate the equipment