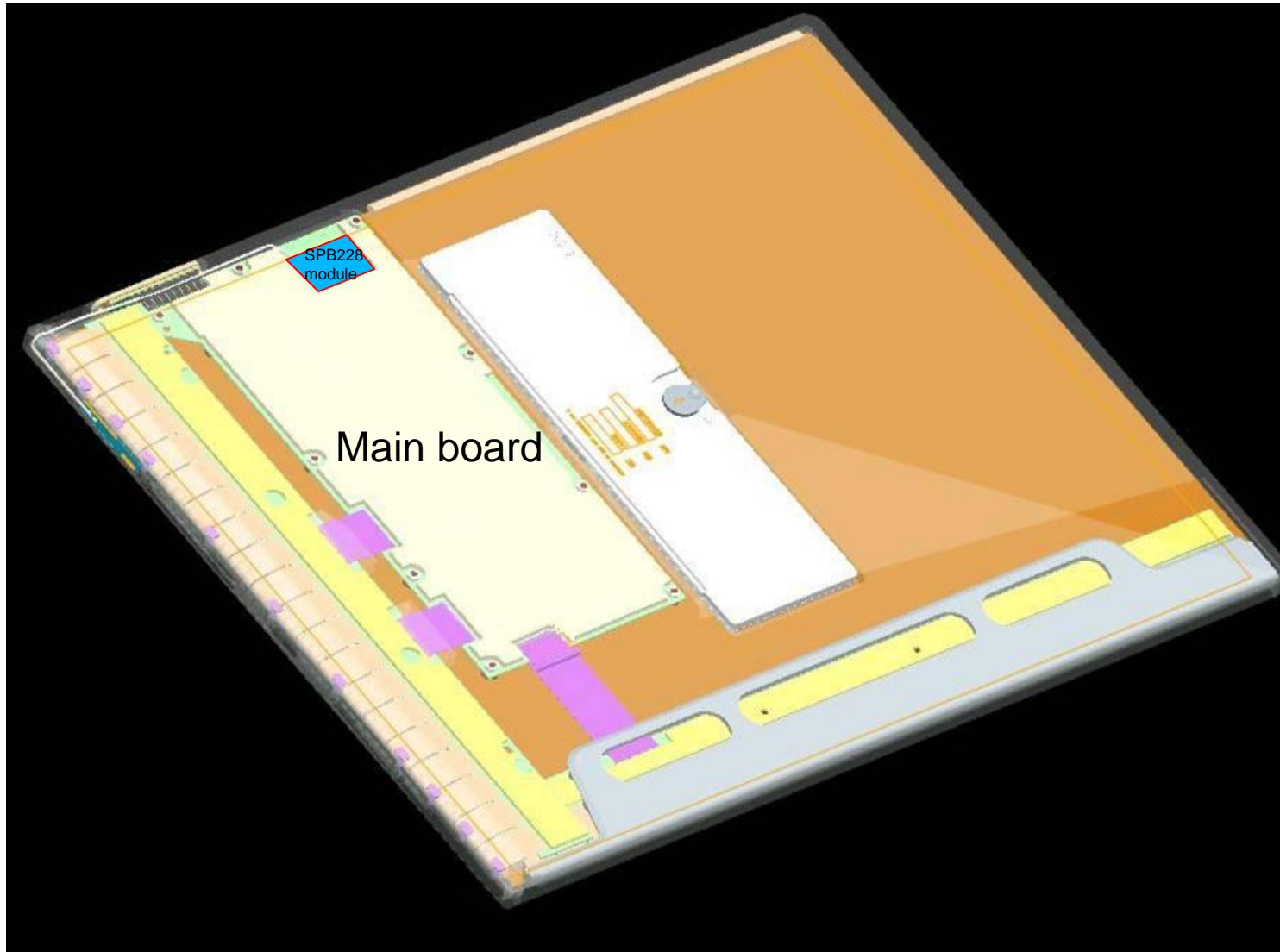


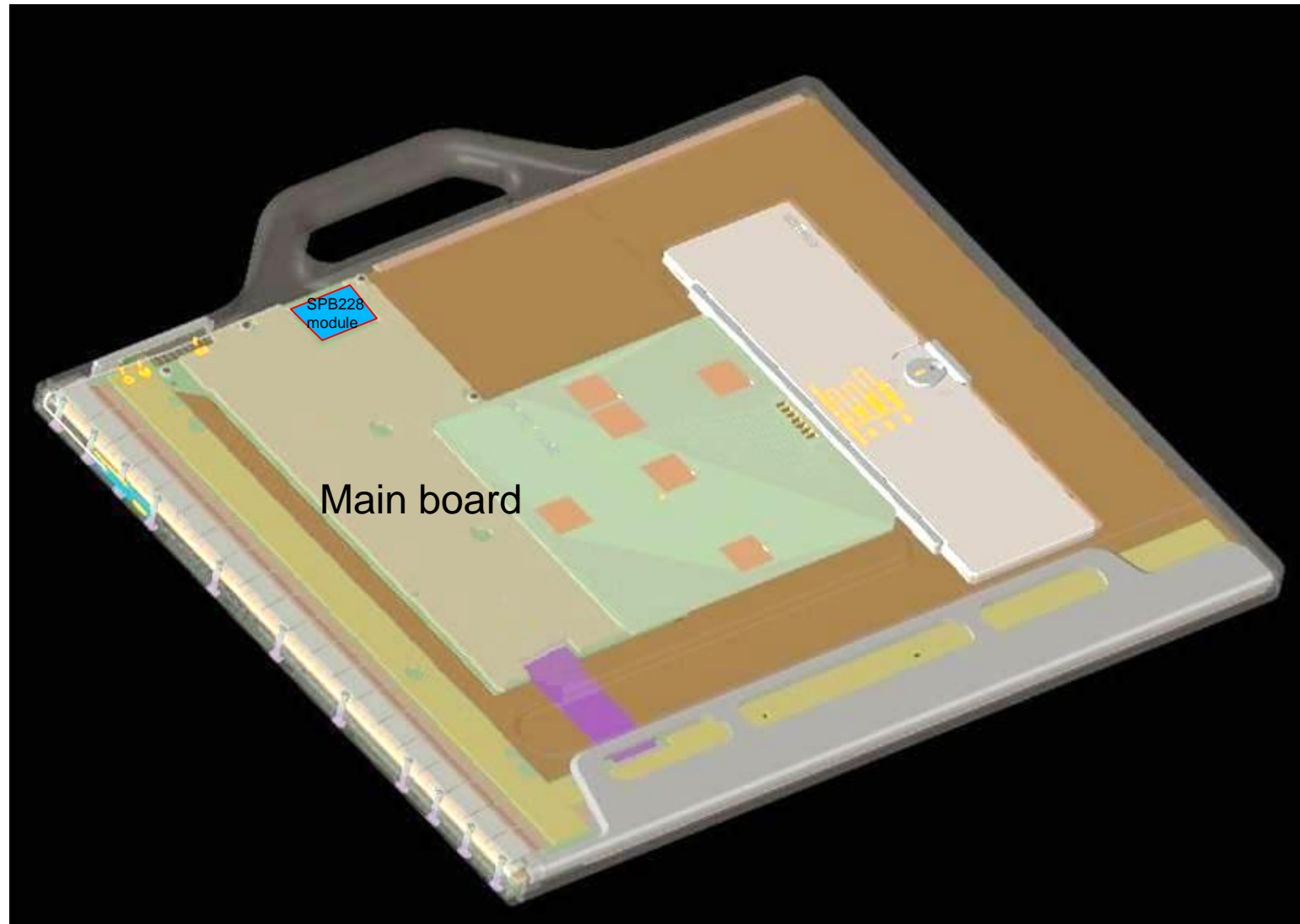


## pixium EZk family

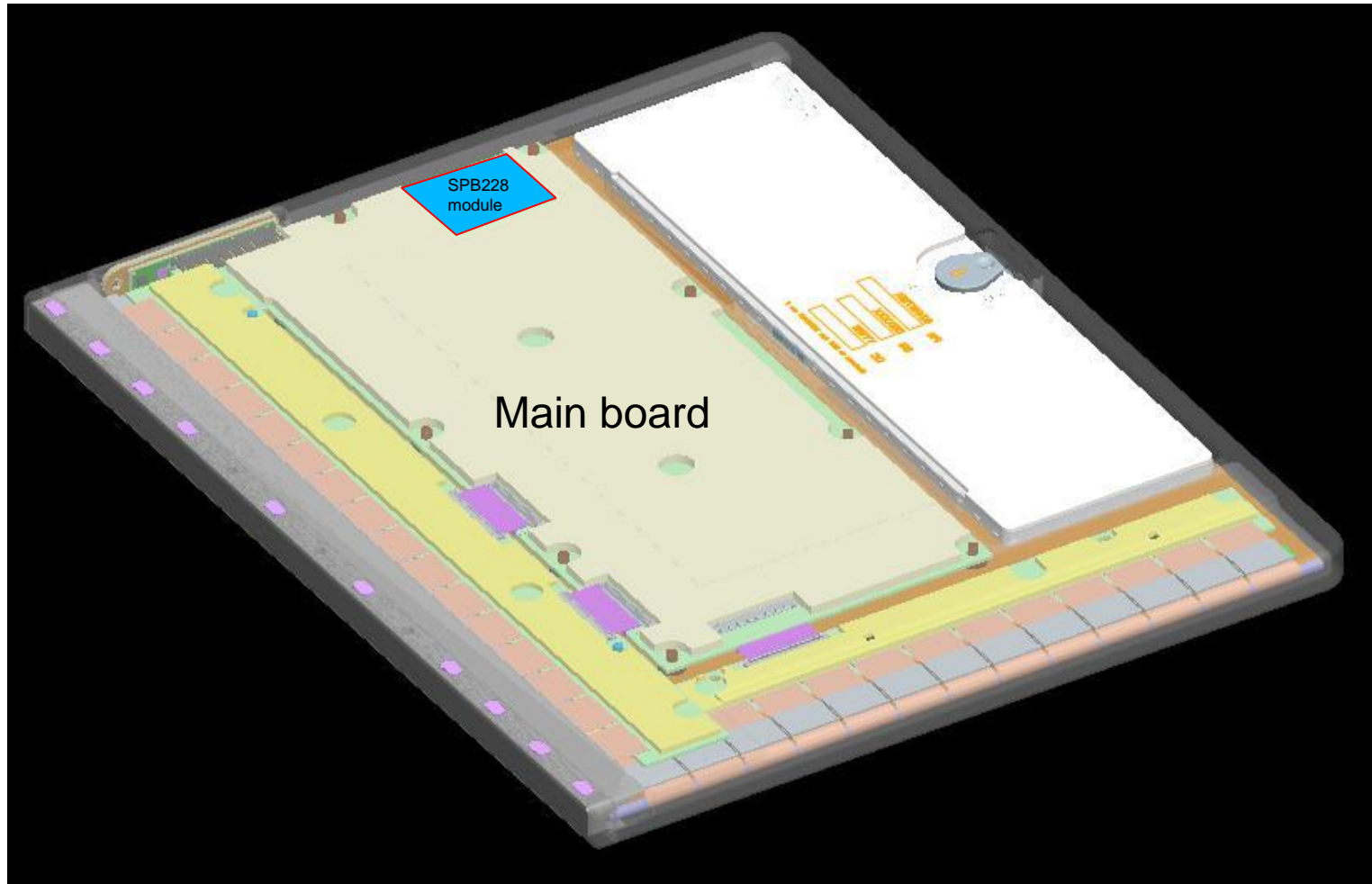
O. Chastel



**Trixell confidential**



**Trixell confidential**



Trixell confidential

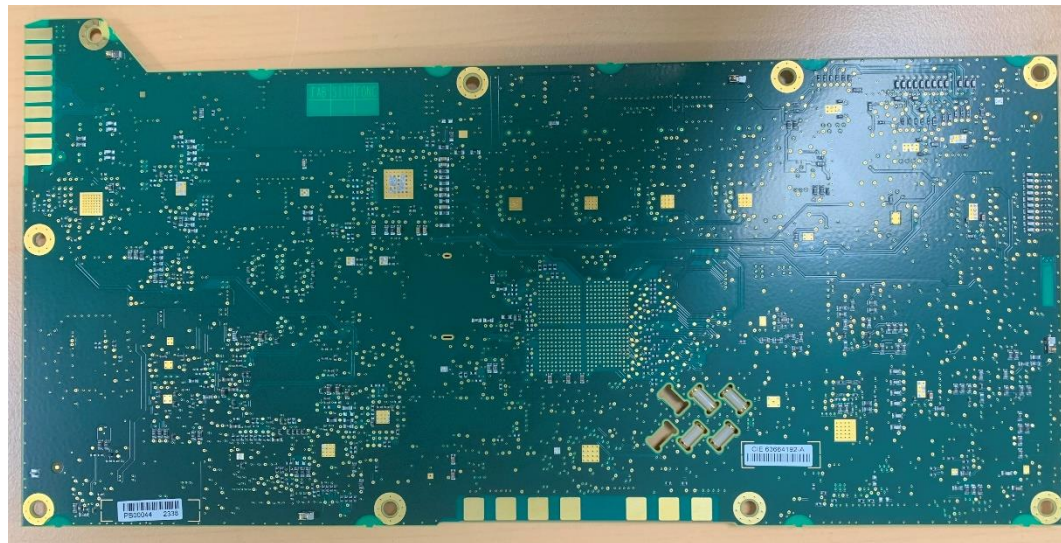


Front side

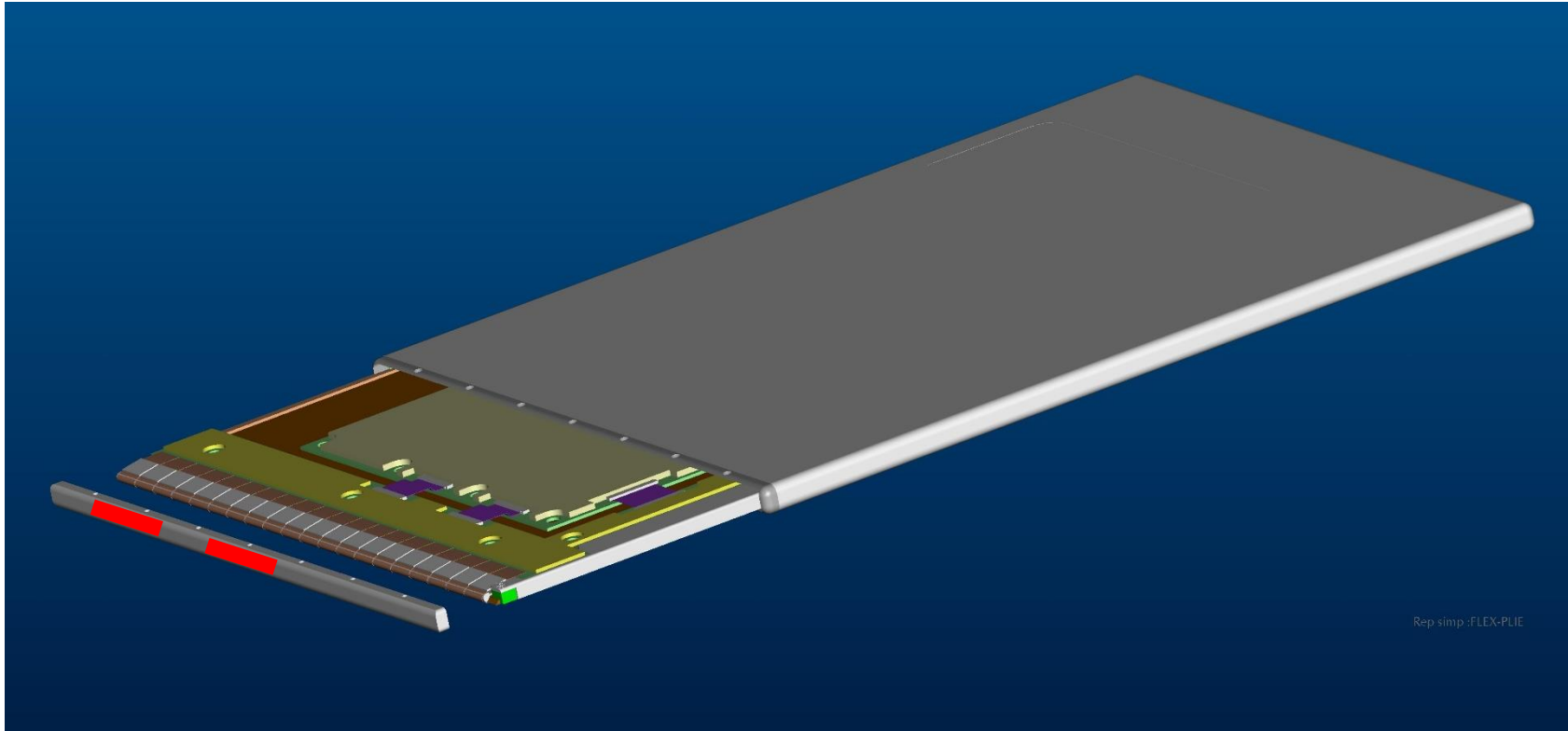


SPB228 wifi module

Back side



**Trixell confidential**



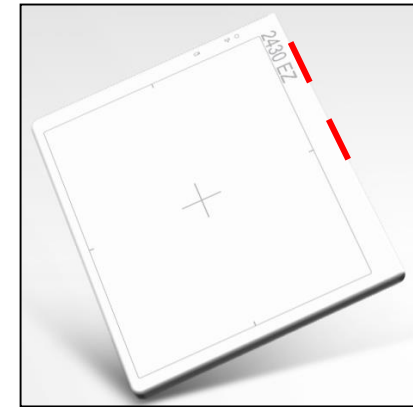
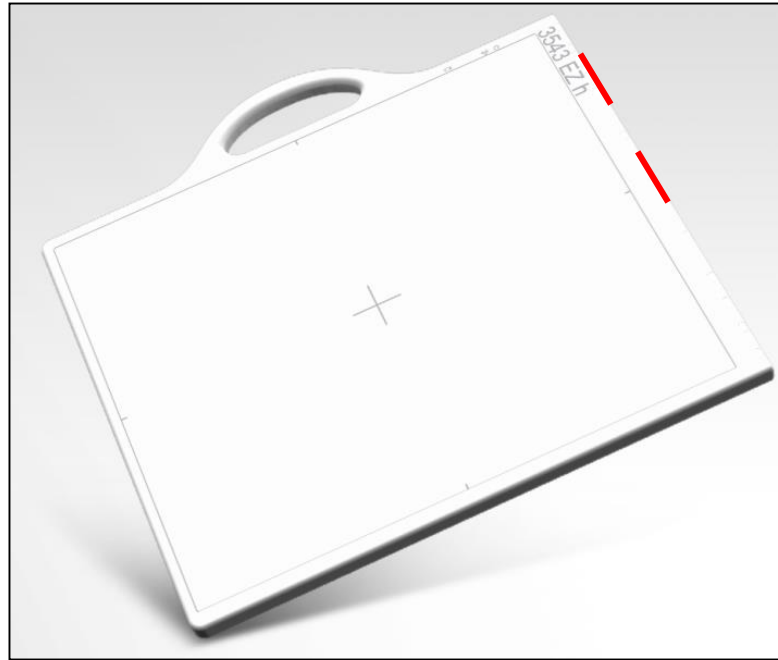
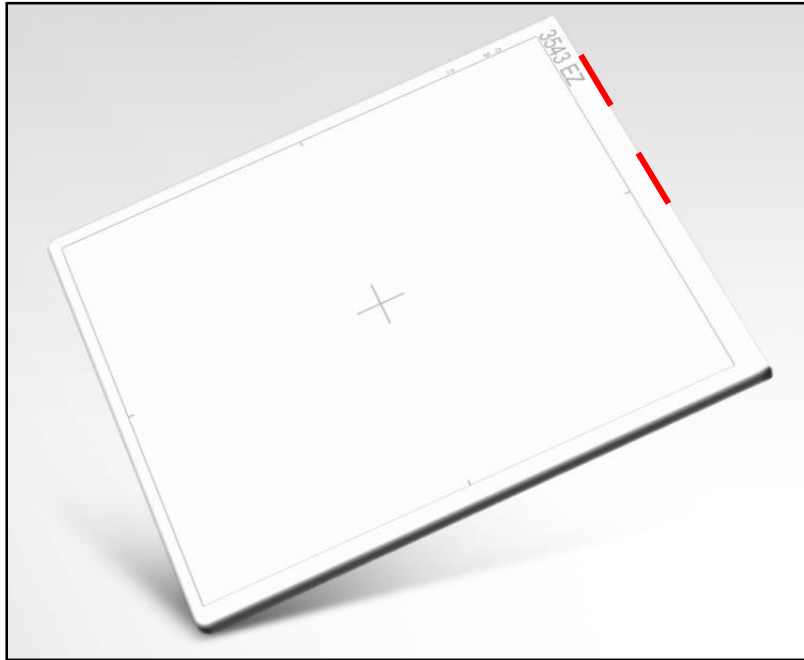
Rep simp :FLEX-PLIE

The same mechanical concept is used for the three detectors. The antennas are located on the cap (in red on the drawing). The cap is screwed to the housing.

**Trixell confidential**

Trixell proprietary and confidential information. Copyright © 2024 by TRIXELL. All rights reserved. This document and the information contained therein are TRIXELL's exclusive property. Any copy and/or disclosure thereof in any form whatsoever are subject to TRIXELL's prior written consent.

{THALES GROUP LIMITED DISTRIBUTION}



The (same) antennas are located on the edge of the detectors as shown here above

**Trixell confidential**