

Back of without Battery Pack

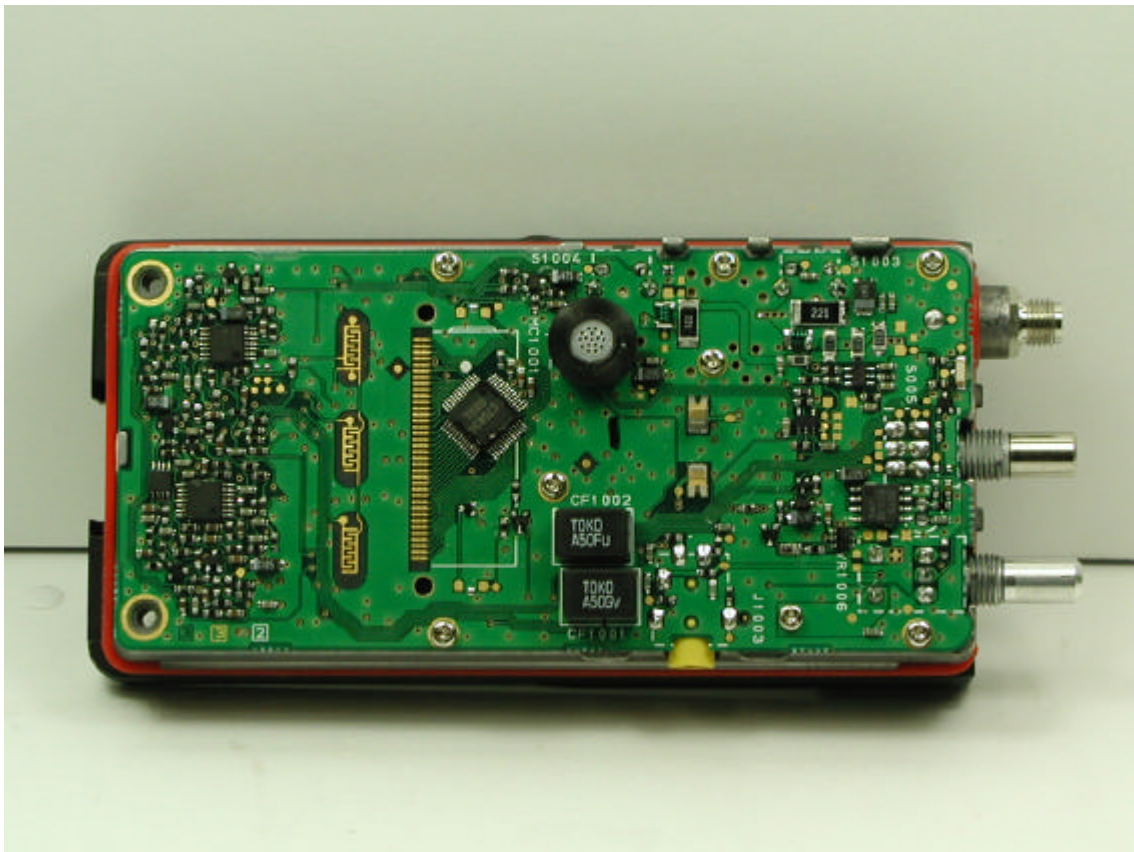


Battery Pack



A photograph of the internal circuit board of a mobile phone. The board is green and populated with numerous electronic components. Key components visible include a large black integrated circuit (likely the CPU) on the left, a smaller black chip labeled 'TOKO ASOFU' and 'TOKO ASOGV' in the center, and various other chips and capacitors. The board is connected to three external connectors on the right side, which are labeled 'SI 004', 'SI 003', and 'SI 002'. The phone's casing is visible around the edges of the board.

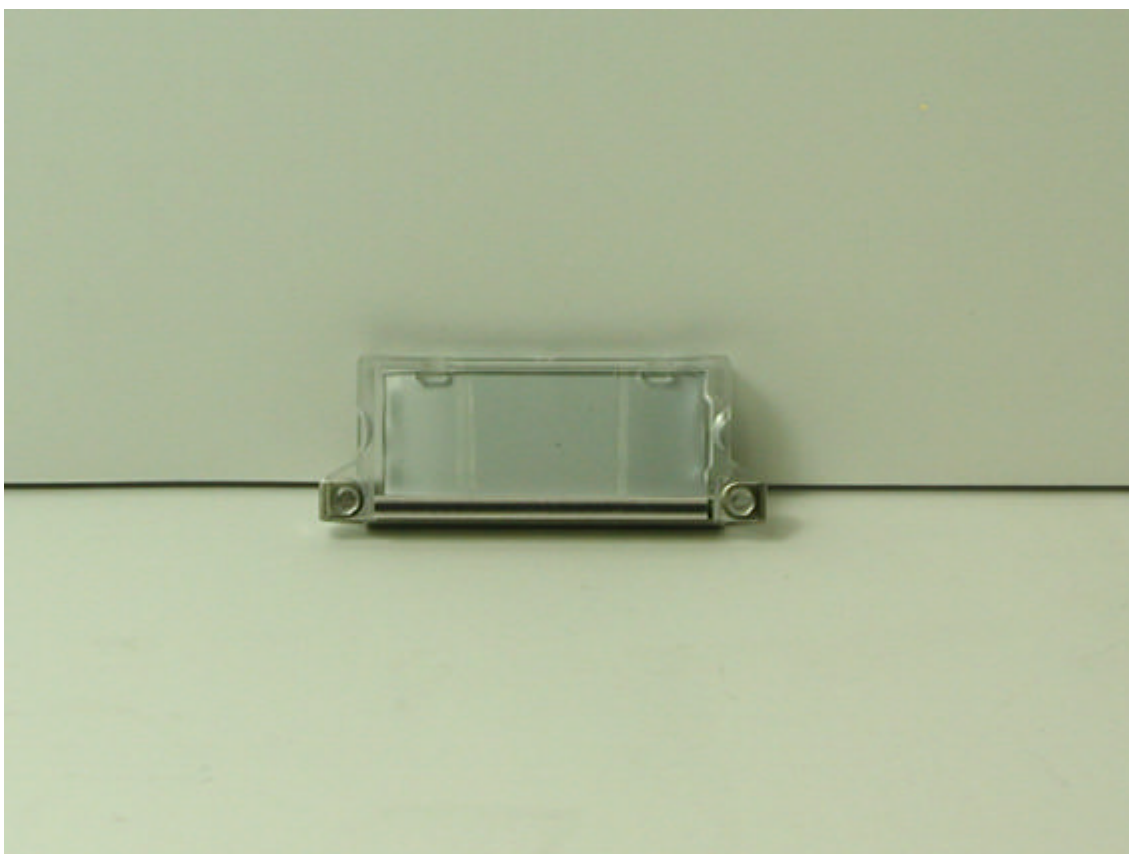
Top of PCB without LCD



Front of LCD



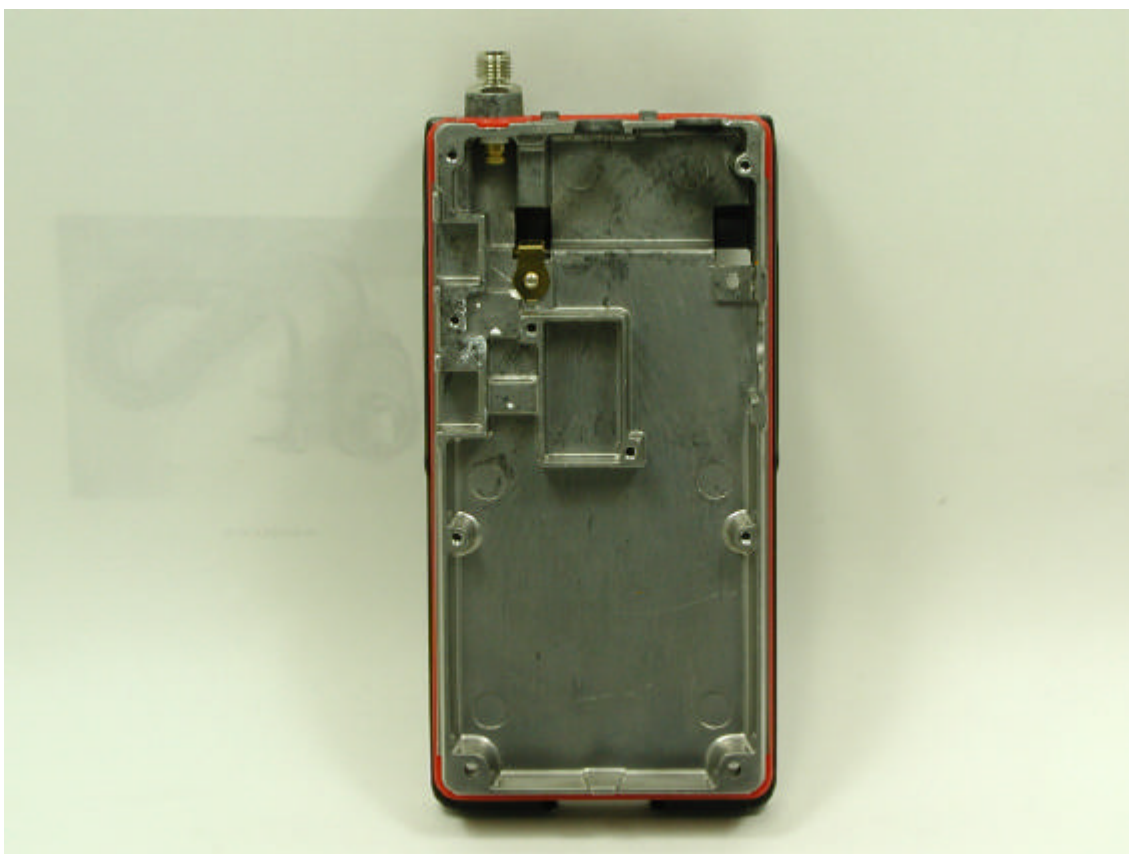
Back of LCD



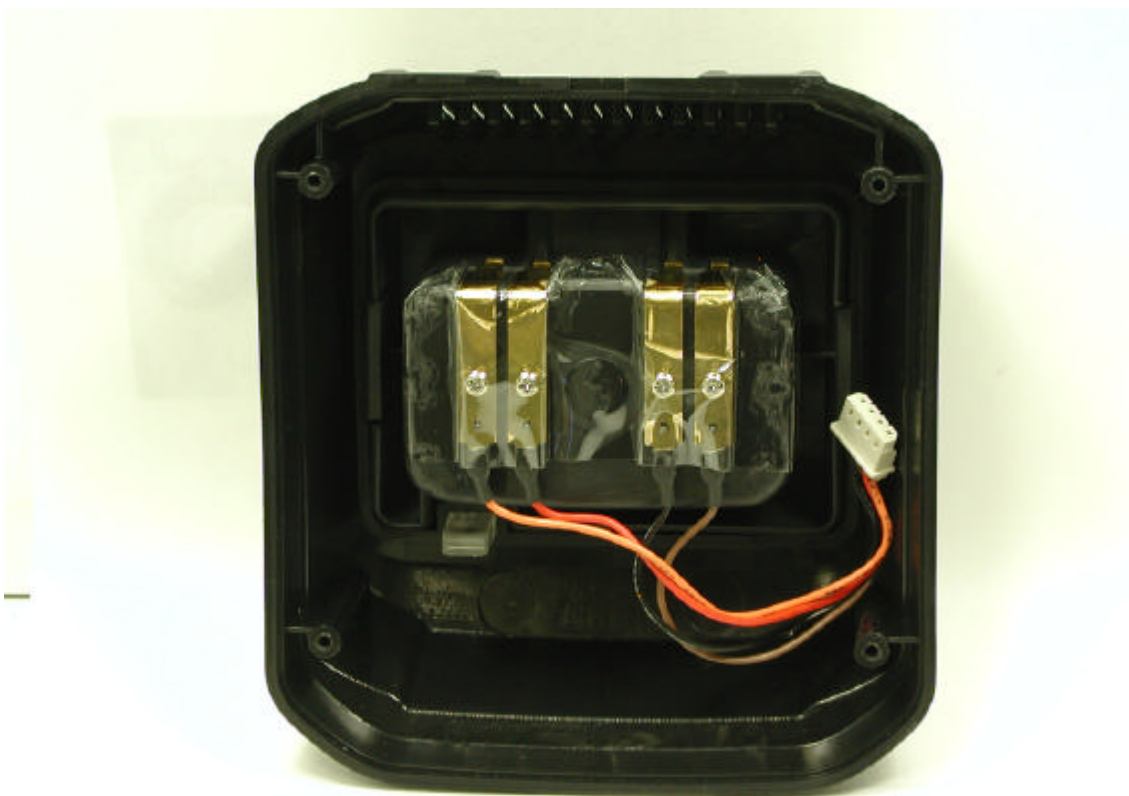
Inside Front of Chassis



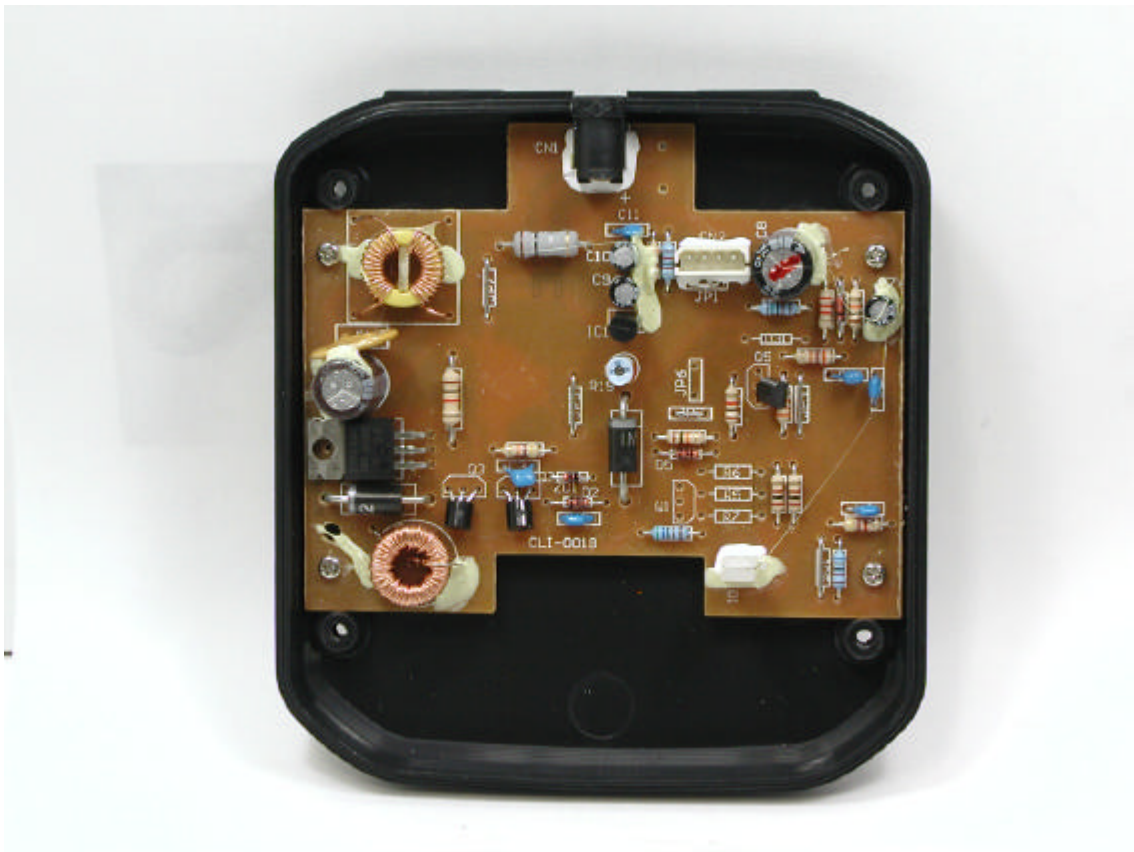
Inside Back of Chassis



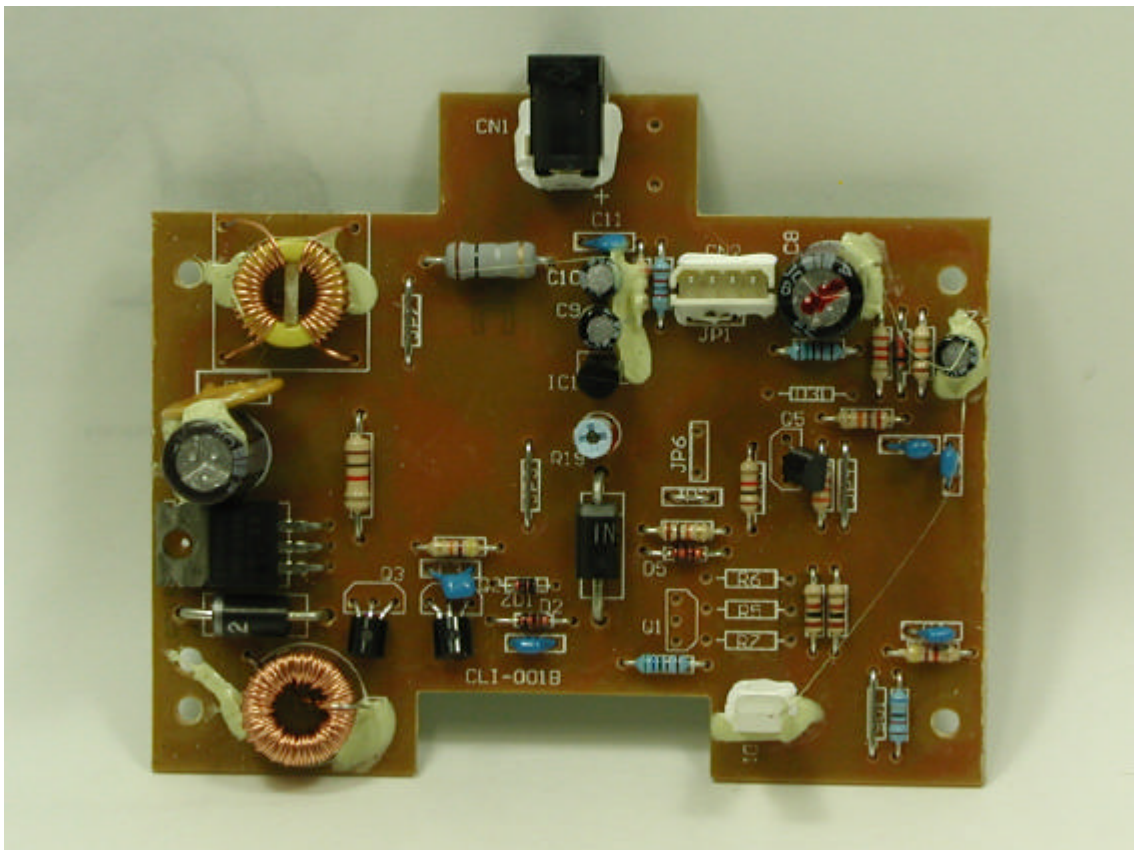
Inside Top of Battery Charger



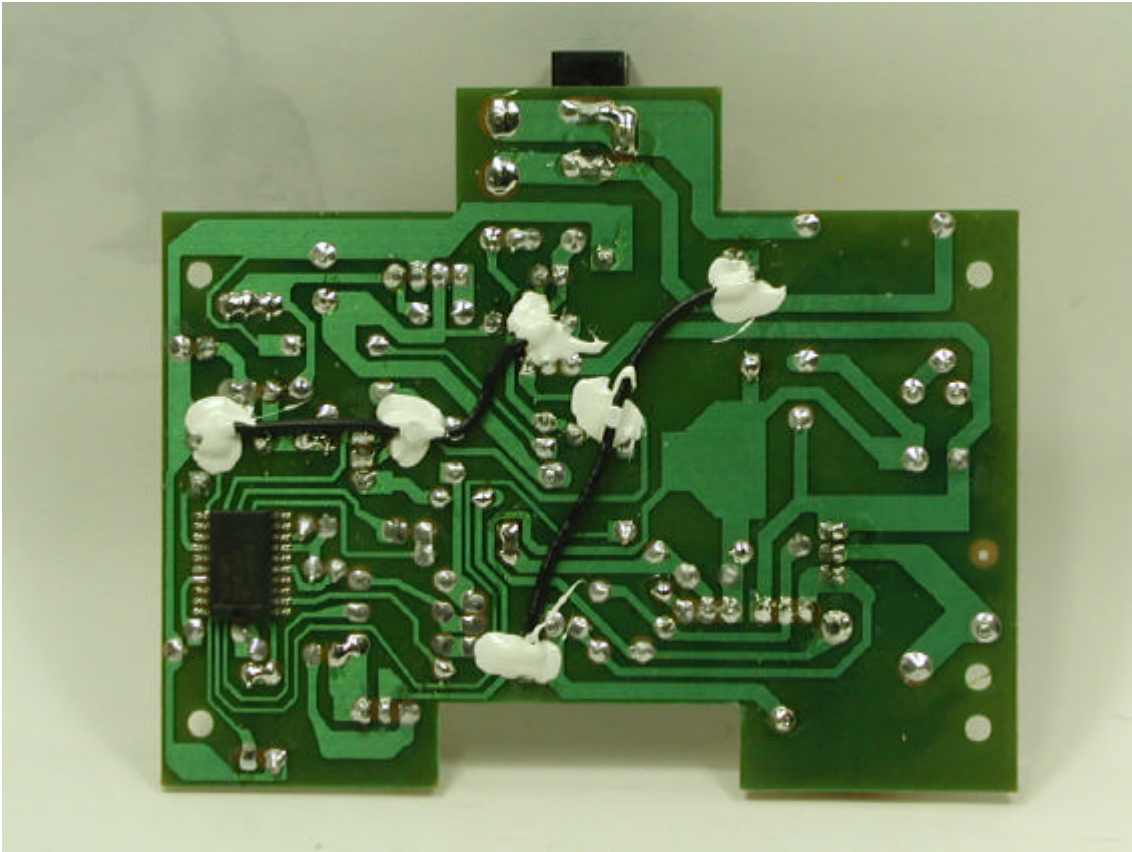
Inside Bottom of Battery Charger



Component Side of Battery Charger PCB



Solder Side of Battery Charger PCB



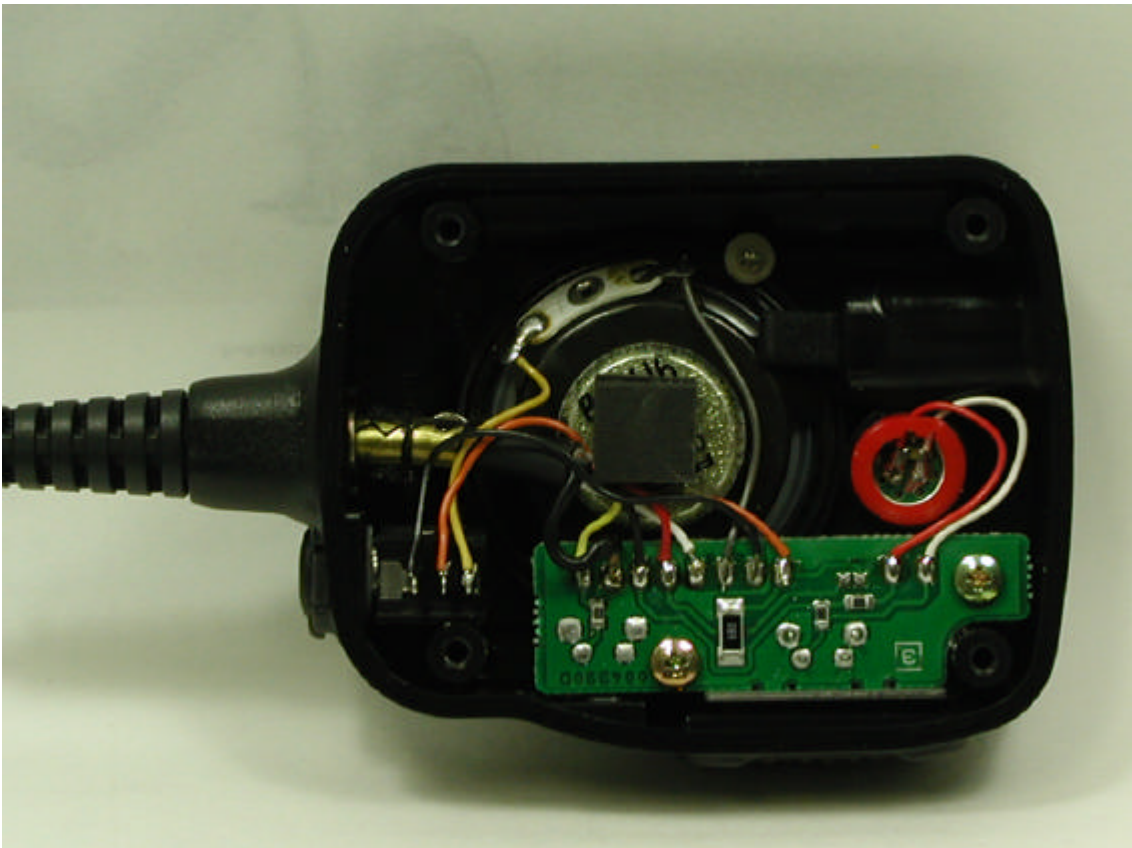
Inside Top Battery Charger Chassis



Inside Bottom Battery Charger Chassis



Inside of Microphone



Inside of Front Microphone Chassis



Inside of Back Microphone Chassis



Inside of Microphone

