

# HEARING AID COMPATIBILITY T-COIL TEST REPORT

FCC ID : IHDT56AU1  
Equipment : Mobile Cellular Phone  
Brand Name : Motorola  
Model Name : XT2551-1, XT2551-2, XT2551-6  
Test Results : PASS  
Applicant : Motorola Mobility LLC  
222 W, Merchandise Mart Plaza, Chicago IL 60654 USA  
Manufacturer : Motorola Mobility LLC  
222 W, Merchandise Mart Plaza, Chicago IL 60654 USA  
Standard : FCC 47 CFR §20.19  
ANSI C63.19-2019  
Date Tested : Dec. 09, 2024 ~ Jan. 11, 2025

We, Sporton International Inc. (Kunshan), would like to declare that the tested sample provide by manufacturer and the test data has been evaluated in accordance with the test procedures given in ANSI C63.19-2019 / 47 CFR Part 20.19 and has been in compliance with the applicable technical standards.

The test results in this report apply exclusively to the tested model / sample. Without written approval of Sporton International Inc. (Kunshan), the test report shall not be reproduced except in full.



Approved by: Si Zhang

**Sporton International Inc. (Kunshan)**

No. 1098, Pengxi North Road, Kunshan Economic Development Zone Jiangsu Province 215300  
People's Republic of China



## **Table of Contents**

<b>1. General Information .....</b>	<b>4</b>
<b>2. Testing Location.....</b>	<b>5</b>
<b>3. Applied Standards .....</b>	<b>5</b>
<b>4. Air Interface and Operating Mode.....</b>	<b>6</b>
<b>5. T-Coil coupling mode requirements .....</b>	<b>7</b>
5.1 T-Coil coupling qualifying field strengths .....	7
5.2 Frequency Response .....	7
5.3 Desired ABM signal, undesired ABM field qualification requirements .....	8
5.4 T-Coil measurement and reference plane .....	9
<b>6. Test procedure for T-Coil signal .....</b>	<b>10</b>
<b>7. Test Equipment List .....</b>	<b>14</b>
<b>8. T-Coil testing for CMRS Voice.....</b>	<b>15</b>
8.1 GSM Evaluation Results.....	15
8.2 UMTS Evaluation Results.....	16
8.3 VoLTE Evaluation Results .....	17
8.4 VoNR Evaluation Results .....	20
8.5 VoWiFi Evaluation Results .....	23
<b>9. Uncertainty Assessment .....</b>	<b>25</b>
<b>10. References.....</b>	<b>26</b>
 <b>Appendix A. Plots of T-Coil Measurement</b>	
<b>Appendix B. DASy Calibration Certificate</b>	
<b>Appendix C. Test Setup Photos</b>	



## History of this test report

Report No.	Version	Description	Issued Date
HA4N2802B	Rev. 01	Initial issue of report	Jan. 13, 2025
HA4N2802B	Rev. 02	Added data of WLAN SISO and NR UL MIMO This report is an update version, replacing the report issued on Jan. 13, 2025.	Feb. 11, 2025



## 1. General Information

Product Feature & Specification	
Applicant Name	Motorola Mobility LLC
Equipment Name	Mobile Cellular Phone
Brand Name	Motorola
Model Name	XT2551-1, XT2551-2, XT2551-6
IMEI Code	IMEI 1: 350086570033790 IMEI 2: 350086570033808
FCC ID	IHDT56AU1
HW	DVT2
SW	V2VL35.5
EUT Stage	Identical Prototype
Frequency Band	GSM850: 824 MHz ~ 849 MHz GSM1900: 1850MHz ~ 1910MHz WCDMA Band II: 1850 MHz ~ 1910 MHz WCDMA Band IV: 1710 MHz ~ 1755 MHz WCDMA Band V: 824 MHz ~ 849 MHz LTE Band 2: 1850 MHz ~ 1910 MHz LTE Band 4: 1710 MHz ~ 1755 MHz LTE Band 5: 824 MHz ~ 849 MHz LTE Band 7: 2500 MHz ~ 2570 MHz LTE Band 12: 699 MHz ~ 716 MHz LTE Band 13: 777 MHz ~ 787 MHz LTE Band 14: 788 MHz ~ 798 MHz LTE Band 17: 704 MHz ~ 716 MHz LTE Band 25: 1850 MHz ~ 1915 MHz LTE Band 26: 814 MHz ~ 849 MHz LTE Band 30: 2305 MHz ~ 2315 MHz LTE Band 38: 2570 MHz ~ 2620 MHz LTE Band 41: 2496 MHz ~ 2690 MHz LTE Band 42: 3450 MHz ~ 3600 MHz LTE Band 43: 3600 MHz ~ 3700 MHz LTE Band 48: 3550 MHz ~ 3700 MHz LTE Band 66: 1710 MHz ~ 1780 MHz LTE Band 71: 663 MHz ~ 698 MHz 5G NR n2 : 1850 MHz ~ 1910 MHz 5G NR n5 : 824 MHz ~ 849 MHz 5G NR n7 : 2500 MHz ~ 2570 MHz 5G NR n12 : 699 MHz ~ 716 MHz 5G NR n14 : 788 MHz ~ 798 MHz 5G NR n25 : 1850 MHz ~ 1915 MHz 5G NR n26 : 814 MHz ~ 849 MHz 5G NR n30 : 2305 MHz ~ 2315 MHz 5G NR n38 : 2570 MHz ~ 2620 MHz 5G NR n41 : 2496 MHz ~ 2690 MHz 5G NR n48 : 3550 MHz ~ 3700 MHz 5G NR n66 : 1710 MHz ~ 1780 MHz 5G NR n70 : 1695 MHz ~ 1710 MHz 5G NR n71 : 663 MHz ~ 698 MHz 5G NR n77: 3700 MHz ~ 3980 MHz, 3450MHz ~ 3550MHz 5G NR n78: 3700 MHz ~ 3800 MHz, 3450MHz ~ 3550MHz WLAN 2.4GHz Band: 2412 MHz ~ 2462 MHz WLAN 5.2GHz Band: 5180 MHz ~ 5240 MHz WLAN 5.3GHz Band: 5260 MHz ~ 5320 MHz WLAN 5.5GHz Band: 5500 MHz ~ 5720 MHz WLAN 5.8GHz Band: 5745 MHz ~ 5825 MHz WLAN 6GHz U-NII 5: 5925 MHz ~ 6425 MHz WLAN 6GHz U-NII 6: 6425 MHz ~ 6525 MHz WLAN 6GHz U-NII 7: 6525 MHz ~ 6875 MHz WLAN 6GHz U-NII 8: 6875 MHz ~ 7125 MHz Bluetooth: 2402 MHz ~ 2480 MHz NFC : 13.56 MHz WPT: 115 KHz ~ 145 KHz UWB: 6489.6MHz & 7987.2MHz
Mode	GSM/GPRS/EGPRS RMC/AMR 12.2Kbps HSDPA



	HSUPA DC-HSDPA HSPA+ (16QAM uplink is not supported) LTE: QPSK, 16QAM, 64QAM, 256QAM 5G NR: DFT-s-OFDM/CP-OFDM, Pi/2 BPSK/QPSK/16QAM/64QAM/256QAM WLAN 2.4GHz 802.11b/g/n HT20/HT40 WLAN 2.4GHz 802.11ax/be HE20/HE40/EHT20/EHT40 WLAN 5GHz 802.11a/n HT20/HT40 WLAN 5GHz 802.11ac VHT20/VHT40/VHT80/VHT160 WLAN 5GHz 802.11ax HE20/HE40/HE80/HE160 WLAN 5GHz 802.11be EHT20/EHT40/EHT80/EHT160 WLAN 6GHz 802.11a/ax HE20/HE40/HE80/HE160 WLAN 6GHz 802.11be EHT20/EHT40/EHT80/EHT160/EHT320 Bluetooth BR/EDR/LE NFC: ASK WPT: ASK UWB: BPM-BPSK
<b>Remark:</b> The different model names XT2551-1, XT2551-2, XT2551-6 are only for market segment purpose, there is no other difference.	

## **2. Testing Location**

Sporton International Inc. (Kunshan) is accredited to ISO/IEC 17025:2017 by American Association for Laboratory Accreditation with Certificate Number 5145.02.

Testing Laboratory			
Test Firm	Sporton International Inc. (Kunshan)		
Test Site Location	No. 1098, Pengxi North Road, Kunshan Economic Development Zone Jiangsu Province 215300 People's Republic of China TEL : +86-512-57900158		
Test Site No.	Sporton Site No.	FCC Designation No.	FCC Test Firm Registration No.
	SAR05-KS	CN1257	314309

## **3. Applied Standards**

- FCC CFR47 Part 20.19
- ANSI C63.19-2019
- FCC KDB 285076 D01 HAC Guidance v06r04
- FCC KDB 285076 D02 T Coil testing v04
- FCC KDB 285076 D03 HAC FAQ v01r07

**4. Air Interface and Operating Mode**

Air Interface	Band MHz	Type	C63.19 Tested	Simultaneous Transmitter	Name of Voice Service	Power State Compliance	
GSM	GSM850	VO	Yes	WLAN, BT, UWB	CMRS Voice	Pmax <sup>(9)</sup>	
	GSM1900			WLAN, BT, UWB			
	EDGE850	VD	Yes	WLAN, BT, UWB	Google Meet <sup>(1)</sup> google Fi		
	EDGE1900			WLAN, BT, UWB			
UMTS	Band 2	VO	Yes	WLAN, BT, UWB	CMRS Voice	Pmax <sup>(9)</sup>	
	Band 4			WLAN, BT, UWB			
	Band 5			WLAN, BT, UWB			
	HSPA	VD	Yes	WLAN, BT, UWB	Google Meet <sup>(1)</sup> google Fi		
LTE (FDD)	Band 2	VD	Yes	5G NR, WLAN, BT, UWB	VoLTE / Google Meet <sup>(1)</sup> google Fi	Pmax <sup>(9)</sup>	
	Band 4			5G NR, WLAN, BT, UWB			
	Band 5			5G NR, WLAN, BT, UWB			
	Band 7			5G NR, WLAN, BT, UWB			
	Band 12			5G NR, WLAN, BT, UWB			
	Band 13			5G NR, WLAN, BT, UWB			
	Band 14			5G NR, WLAN, BT, UWB			
	Band 17			5G NR, WLAN, BT, UWB			
	Band 25			5G NR, WLAN, BT, UWB			
	Band 26			5G NR, WLAN, BT, UWB			
	Band 30			5G NR, WLAN, BT, UWB			
	Band 66			5G NR, WLAN, BT, UWB			
	Band 71			5G NR, WLAN, BT, UWB			
	LTE (TDD)			Band 38			VD
Band 41		5G NR, WLAN, BT, UWB					
Band 42		5G NR, WLAN, BT, UWB					
Band 43		5G NR, WLAN, BT, UWB					
Band 48		5G NR, WLAN, BT, UWB					
5G NR	n2	VD	Yes	LTE, WLAN, BT, UWB	VoNR / Google Meet <sup>(1)</sup> google Fi	Pmax <sup>(9)</sup>	
	n5			LTE, WLAN, BT, UWB			
	n7			LTE, WLAN, BT, UWB			
	n12			LTE, WLAN, BT, UWB			
	n14			LTE, WLAN, BT, UWB			
	n25			LTE, WLAN, BT, UWB			
	n26			LTE, WLAN, BT, UWB			
	n30			LTE, WLAN, BT, UWB			
	n38			LTE, WLAN, BT, UWB			
	n41			LTE, WLAN, BT, UWB			
	n48			LTE, WLAN, BT, UWB			
	n66			LTE, WLAN, BT, UWB			
	n70			LTE, WLAN, BT, UWB			
	n71			LTE, WLAN, BT, UWB			
	n77			LTE, WLAN, BT, UWB			
	n78			LTE, WLAN, BT, UWB			
Wi-Fi	2450	VD	Yes	GSM, WCDMA, LTE, 5G NR, 5GHz/6GHz WLAN, UWB	VoWiFi / Google Meet <sup>(1)</sup> google Fi	Pmax <sup>(9)</sup>	
	5200			GSM, WCDMA, LTE, 5G NR, 2.4GHz WLAN, BT, UWB			
	5300			GSM, WCDMA, LTE, 5G NR, 2.4GHz WLAN, BT, UWB			
	5500			GSM, WCDMA, LTE, 5G NR, 2.4GHz WLAN, BT, UWB			
	5800			GSM, WCDMA, LTE, 5G NR, 2.4GHz WLAN, BT, UWB			
Wi-Fi	U-NII 5	VD	Yes <sup>(3)</sup>	GSM, WCDMA, LTE, 5G NR, 2.4GHz WLAN, BT, UWB	VoWiFi / Google Meet <sup>(1)</sup> google Fi	Pmax <sup>(9)</sup>	
	U-NII 6		No <sup>(2)</sup>				
	U-NII 7						
	U-NII 8						
BT	2450	DT	No	GSM, WCDMA, LTE, 5G NR, 5GHz/6GHz WLAN, UWB	NA	NA	
UWB	UWB	DT	No	GSM, WCDMA, LTE, 5G NR, WLAN, BT	NA	NA	

**Type Transport:**

VO= Voice only

DT= Digital Transport only (no voice)

VD= CMRS and IP Voice Service over Digital Transport

**Remark:**

- For protocols not listed in Table 6.1 of ANSI C63.19:2019, the average speech level of -20 dBm0 should be used.
- The WLAN6GHz U-NII 6/7/8 were above 6GHz and were not evaluated due to outside of the current scope of ANSI C63.19 and FCC HAC regulations.
- The WLAN6GHz U-NII-5 was evaluated for operations which are entirely below 6 GHz, above 6 GHz were not evaluated due outside of the current scope of ANSI C63.19 and FCC HAC regulations.
- Because features of Google Meet allow the option of voice-only communications, Meet has been tested for HAC/T-Coil compatibility to ensure the best user experience.
- The device have similar frequency in some LTE/5GFR1 bands: LTE B12/17, 5/26, 4/66, 2/25, 38/41, 42(3550MHz~3600MHz)&43/48, and 5GFR1 n2/25, n5/26, n38/41, n77/78, since the supported frequency spans for the smaller LTE/NR bands are completely cover by the larger LTE/NR bands, therefore, only larger LTE/NR bands were required to be tested for hearing-aid compliance.
- The Google Meet and google Fi the audio path, parameter and audio codec are all the same, therefore, the Google Meet is evaluation for this device to show compliance.
- The device has two work states, flip open and flip close, and that support held-to-the-ear mode in open-side positions of a foldable handset only, so flip open

8. mode was performed HAC/T-Coil testing.
9. This is partial report for CMRS voice T-Coil testing. T-Coil test report for WLAN 6GHz and VOIP test report will be separately submitted.
10. The product only 2G/3G/4G/5G support time-average SAR feature, therefore GSM/UMTS/LTE/5GFR1/WIFI HAC were tested at Pmax level(the maximum power).

## 5. T-Coil coupling mode requirements

### 5.1 T-Coil coupling qualifying field strengths

When measured as specified in this standard, there are two groups of qualifying measurement points:

Primary group: A qualifying measurement point shall have its T-Coil signal, desired ABM signal,  $\geq -18$  dB(A/m) at 1 kHz, in a 1/3 octave band filter. These measurements shall be made with the WD operating at a reference input level as specified in Table 6.1. simultaneously, the qualifying measurement point shall have its weighted magnetic noise, undesired ABM field  $\leq -38$  dB(A/m).

Secondary group: A qualifying measurement point shall have its weighted magnetic noise, undesired ABM field  $\leq -38$  dB(A/m). This group inherently includes all the members of the primary group.

These levels are designed to be compatible with hearing aids that produce the same acoustic output level for either an acoustic input level of 65 dB SPL or a magnetic input level of  $-25$  dB(A/m) (56.2 mA/m) 39 at either 1.0 kHz or 1.6 kHz. The hearing aid operational measurements are performed per ANSI S3.22-2014

### 5.2 Frequency Response

The frequency response of the magnetic field, measured in 1/3 octave bands, shall follow the response curve specified in this subclause, over the frequency range 300 Hz to 3 kHz.

Figure 6.4 and Figure 6.5 provide the boundaries for the specified frequency. These response curves are for true field strength measurements of the T-Coil signal. Thus the 6 dB/octave probe response has been corrected from the raw readings.

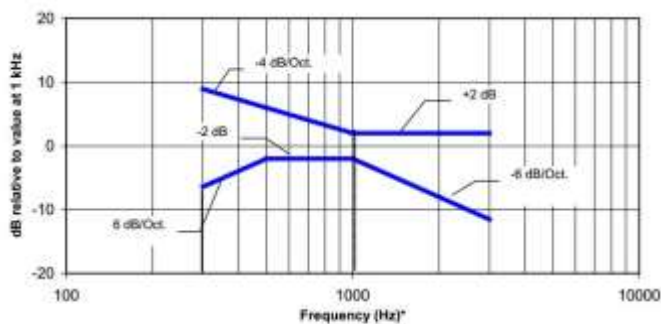


Figure 6.4—Magnetic field frequency response for WDs with a maximum field  $\leq -15$  dB(A/m) at 1 kHz

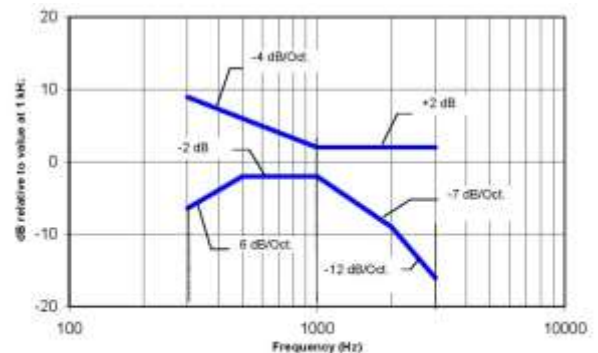


Figure 6.5—Magnetic field frequency response for WDs with a maximum field that exceeds  $-15$  dB(A/m) at 1 kHz

### **5.3 Desired ABM signal, undesired ABM field qualification requirements**

#### **<Non-2G GSM operating modes>**

The goal of this requirement is to ensure an adequate area where desired ABM signal is sufficiently strong to be heard clearly and a larger area where undesired ABM field is sufficiently low as to avoid undue annoyance. Qualifying measurement points shall fulfill the requirements of ANSI C63.19-2019 section 6.6.2; both the primary and secondary group requirements shall be met:

- The primary group shall include at least 75 measurement points
- The secondary group shall include at least 300 contiguous measurement points

Additionally, to avoid an oddly shaped area of low noise, the secondary group shall include at least one longitudinal column of at least 10 contiguous qualifying points and at least one transverse row containing at least 15 contiguous qualifying points.

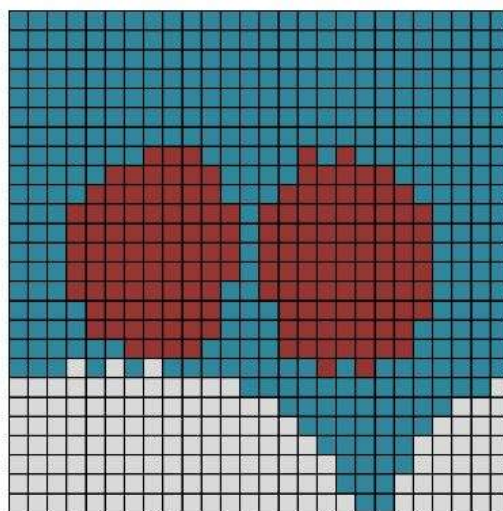
Figure 6.6 is an example of a qualifying scan. The total number of primary group qualifying measurement points is 161, which is  $\geq 75$ . The total number of secondary group qualifying points is 536, which is  $\geq 300$

The secondary group has a longitudinal column of 26, which is  $\geq 10$ , and a transverse row also of 26 contiguous points, which is  $\geq 15$

#### **<2G GSM operating modes>**

If the 2G GSM operating mode(s) are selected for qualification, the qualifying measurement points shall fulfil the requirements of ANSI C63.19-2019 section 6.6.2; both the primary and secondary group requirements shall be met:

- The primary group shall include at least 25 measurement points
- The secondary group shall include at least 125 contiguous measurement points

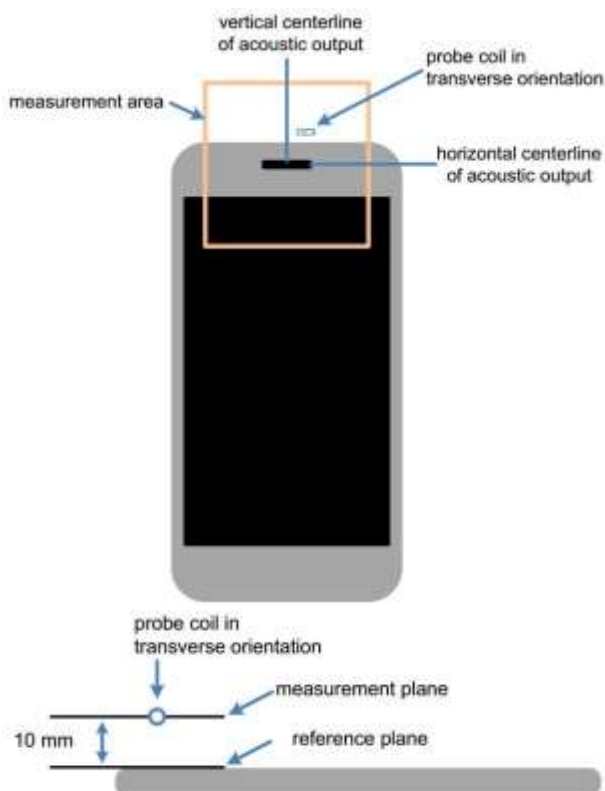


Red (primary group): AB desired ABM signal  $M1 \geq -18$  dB(A/m) and undesired ABM field  $\leq -38$  dB(A/m)  
Blue and red (secondary group): undesired ABM field  $\leq -38$  dB(A/m)

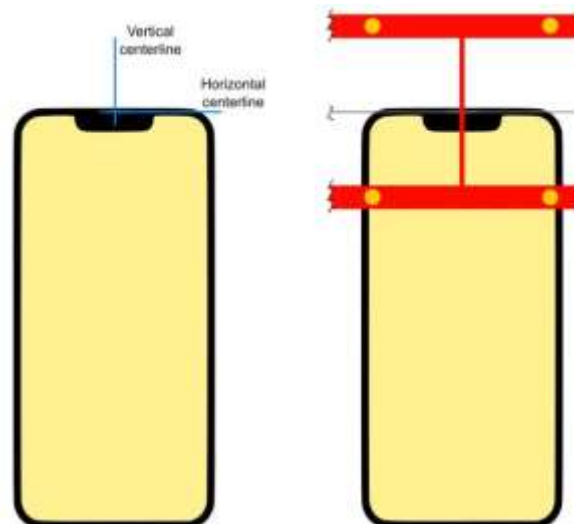
**Figure 6.6—An example of a qualifying desired ABM signal, undesired ABM field scan:**



### 5.4 T-Coil measurement and reference plane



**Measurement and reference planes probe orientation for WD audio frequency magnetic field measurements**



**Device Under Test Positioning under the Test Arch**

**The T-Coil measurement plane, reference plane and other measurement parameters shall be:**

- The reference plane is the planar area that contains the highest point in the area of the phone that normally rests against the user's ear. It is parallel to the centerline of the receiver area of the phone and is defined by the points of the receiver-end of the WD handset, which, in normal handset use, rest against the ear.
- The measurement plane is parallel to, and 10 mm in front of, the reference plane.
- The reference axis is normal to the reference plane and passes through the center of the acoustic output (or the center of the hole array); or may be centered on or near a secondary inductive source. The actual location of the reference axis and resultant measurement area shall be noted in the test report.
- The measurement area shall be 50 mm by 50 mm. The measurement area for both desired ABM signal and undesired ABM field may be located where the transverse magnetic measurements are optimum with regard to the requirements. However, the measurement area should be in the vicinity of the acoustic output of the WD and shall be located in the same half of the phone as the WD receiver. In a WD handset with a centered receiver and a circularly symmetrical magnetic field, the measurement axis and the reference axis would coincide.
- Measurements of desired ABM signal strength and undesired ABM field are made at  $2.0 \text{ mm} \pm 0.5 \text{ mm}$  or 4 mm intervals in an X-Y measurement area pattern over the entire measurement area (676 measurement points total); either all measured, or measured plus interpolated, per ANSI C63.19-2019 section 6.4
- Desired ABM signal frequency response is measured at a single location at or near the maximum
- desired ABM signal strength location.
- The actual locations of the measurement points shall be noted in the test report.



## **6. Test procedure for T-Coil signal**

This subclause describes the procedures used to measure the ABM (T-Coil) performance of the WD. Measurements shall be performed over a measurement area 50 mm square, in the measurement plane, as specified in ANSI C63.19-2019 A.3. The measurement area shall be scanned with a uniform measurement point spacing of  $2.0 \text{ mm} \pm 0.5 \text{ mm}$  in each X-Y axis of the plane, yielding 676 measurement points with approximately even spacing throughout the area

Optionally, measurement point spacing may be increased to 4 mm, with interpolation employed to yield the required 676 equivalent measurement points distributed uniformly over the 50 mm square measurement area. Interpolated points shall be derived from the average of the linear representations of the field strengths of the nearest two or four equidistant measured points. The area of measurement is increased to a 52 mm square so that edge rows and columns of the required 50 mm square can be either measured or interpolated, with none extrapolated.

In addition to measuring the desired ABM signal levels, the weighted magnitude of the unintended signal shall also be determined. Weighting of the unintended and undesired ABM field shall be by the spectral and temporal weighting described in ANSI C63.19-2019 D.4 through D.6

In order to assure that the required signal quality is measured, the measurement of the intended signal and the measurement of the unintended signal shall be made at the same locations. Measurements shall not include undesired influence from the WD's RF field; therefore, use of a coaxial connection to a base station simulator or non-radiating load might be necessary. However, even then with a coaxial connection to a base station simulator or non-radiating load there could still be RF leakage from the WD, which could interfere with the desired measurement. Pre-measurement checks should be made to avoid this possibility. All measurements shall be done with the WD operating on battery power with an appropriate normal speech audio signal input level given in ANSI C63.19-2019 Table 6.1. If the device display can be turned off during a phone call, then that may be done during the measurement as well. If tested with the display in the off state this shall be documented in the test report

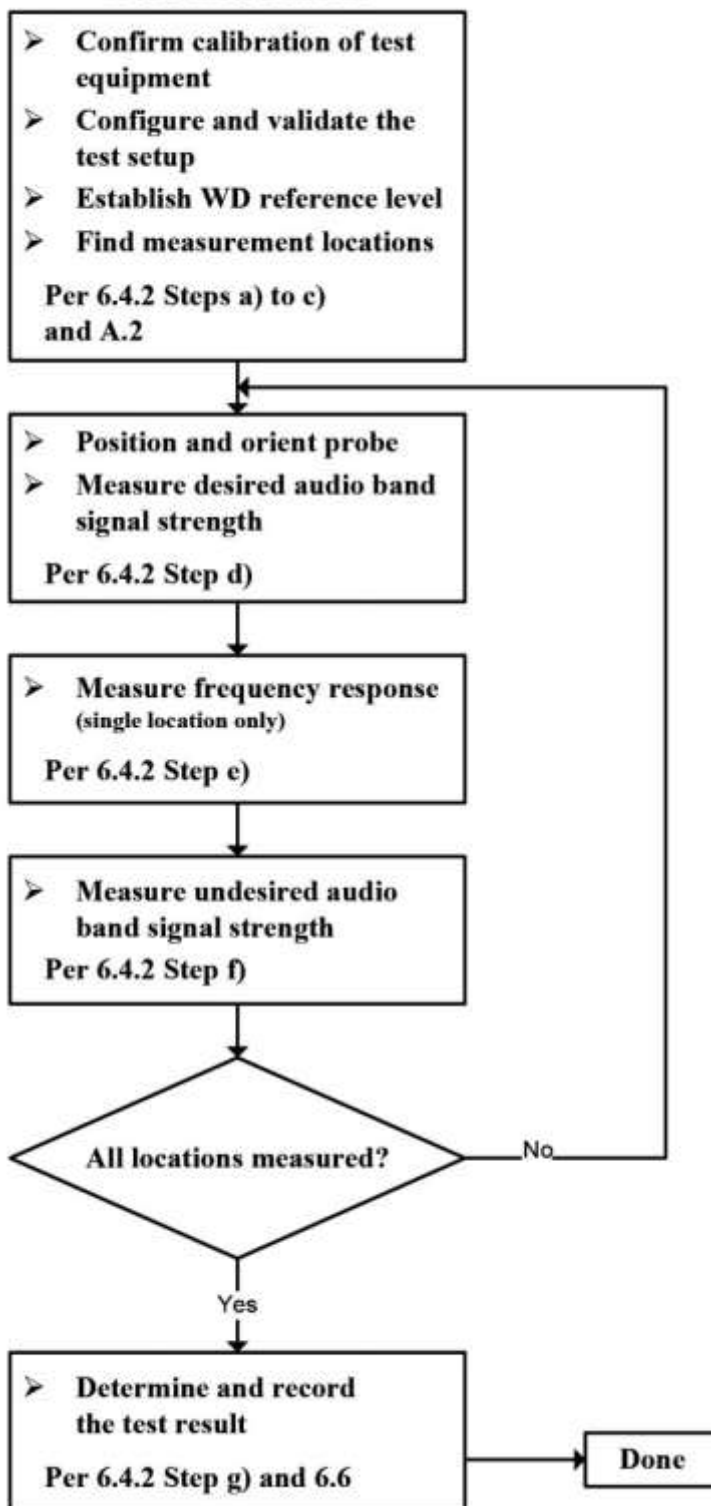
Measurements shall be performed with the probe coil oriented in the transverse direction, as illustrated in ANSI C63.19-2019 A.3, that is, aligned in the plane of the measurement area and perpendicular to the long dimension of the WD. A multi-stage sequence consists of first measuring the field strength of the desired T-Coil signal (desired ABM signal) that is useful to a hearing aid T-Coil at each specified measurement point. The undesired magnetic component (undesired ABM field) is then measured in the same transverse orientation at each of the same measurement points. At a single location only, taken at or near the highest desired ABM signal reading, the desired ABM signal frequency response shall be determined in a third measurement stage. The flowchart in ANSI C63.19-2019 Figure 6.3 illustrates this three-stage process.

To minimize the need to test every WD operating mode to the telecoil requirements of ANSI C63.19-2019 Clause 6, it is permissible to exclude some subset of supported configurations. For a given WD, every mode that supports voice communication shall be considered for telecoil testing. However, if it can be demonstrated that a certain configuration will not be the worst-case telecoil configuration, such configurations may be excluded from the full telecoil scans of ANSI C63.19-2019 section 6.4. 34 For example, operating modes may be pre-screened by scanning for both desired ABM signal and undesired ABM field at a lower measurement point density than the final scans, thus saving considerable testing time by eliminating configurations that are excellent performers from more detailed testing for worst-case. In any case, the specific methods and criteria used to determine which configurations are excluded for a WD shall be explicitly stated and justified in the test report. To be considered for exclusion from telecoil testing, operating modes shall also be shown to pass the frequency response requirements of ANSI C63.19-2019 section 6.6.3.

Many factors could affect telecoil test results. RF power level and amplitude modulation characteristics as well as the specific current paths within the WD associated with the RF output stage(s), the display, and processing circuitry could affect the undesired ABM field. Audio codec implementation and acoustic receiver characteristics could also affect the desired ABM signal). Therefore, any justifications for exclusions should be thorough documented. If an operating mode is under user control and instructions on how to place the WD in a less interfering condition is in the user instructions, those instructions may be followed in configuring the device for testing

## Test flow for T-Coil signal test

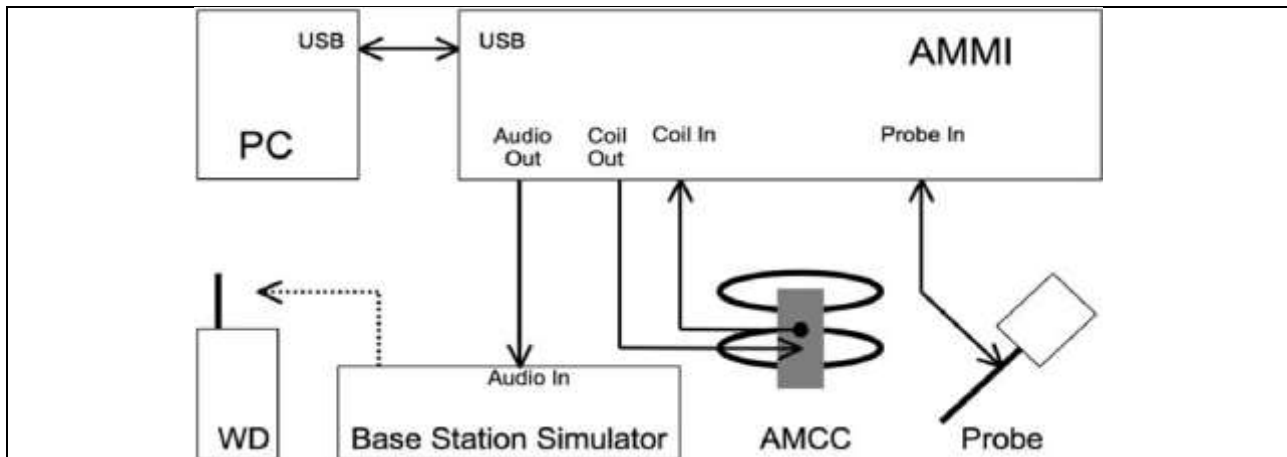
### Test Instructions





The following steps summarize the basic test flow for determining desired ABM signal and undesired ABM field. These steps assume that a sine wave or narrowband 1/3 octave signal can be used for the measurement of desired ABM signal level. An alternative procedure, yielding equivalent results, using a broadband excitation is described in ANSI C63.19-2019 section 6.5.

- a. A validation of the test setup and instrumentation shall be performed. This may be done using a TMFS or Helmholtz Coil. Measure the emissions and confirm that they are within tolerance of the expected values.
- b. Confirm that equipment that requires calibration has been calibrated, and that the noise level meets the requirements given in ANSI C63.19-2019 section 6.3.2.
- c. Position the WD in the test setup and connect the WD RF connector to a base station simulator or a non-radiating load (if necessary to control RF interference in the measurement equipment) as shown in section 6.1 or section 6.2.
- d. The drive level to the WD is set such that the reference input level specified in ANSI C63.19-2019 Table 6.1 is input to the base station simulator (or manufacturer's test mode equivalent) in the 1 kHz, 1/3 octave band. This drive level shall be used for the T-Coil signal test (desired ABM signal) at  $f = 1$  kHz. Either a sine wave at 1025 Hz, or a voice-like signal, band-limited to the 1 kHz 1/3 octave, as specified in 6.4.3, shall be used for the reference audio signal. If interference is found at 1025 Hz an alternative nearby reference audio signal frequency may be used. 35 The same drive level will be used for the desired ABM signal frequency response measurements at each 1/3 octave band center frequency. The WD volume control may be set at any level up to maximum, provided that a signal at any frequency at maximum modulation would not result in clipping or signal overload.
- e. At each measurement location over the measurement area and in the transverse orientation, measure and record the desired 1 kHz T-Coil magnetic signal (desired ABM signal) as described in Step c).
- f. At or near a location representing a maximum in the just-measured desired ABM signal, measure and record the desired T-Coil magnetic signals (desired ABM signal at  $f_i$ ) as described in ANSI C63.19-2019 section 6.4.5.2 in each individual ISO 266:1975 R10 standard 1/3 octave band. The desired audio band input frequency ( $f_i$ ) shall be centered in each 1/3 octave band maintaining the same drive level as determined in Step c), and the reading taken for that band. Equivalent methods of determining the frequency response may also be employed, such as fast Fourier transform (FFT) analysis using noise excitation or input-output comparison using simulated speech. The full-band integrated or half-band integrated probe output, as described in ANSI C63.19-2019 D.9, may be used, as long as the appropriate calibration curve is applied to the measured result, so as to yield an accurate measurement of the field magnitude. (The resulting measurement shall be an accurate measurement in dB(A/m).) Compare the frequency response found to the requirements of ANSI C63.19-2019 section 6.6.3.
- g. At the same locations measured in Step d), measure and record the undesired broadband audio magnetic signal (undesired ABM field) with no audio signal applied (or digital zero applied, if appropriate) using the specified spectral weighting, the half-band integrator followed by the temporal weighting.
- h. Calculate and record the location and number of the measurement points that satisfy both the minimum desired ABM signal level and the maximum undesired ABM field level specified in ANSI C63.19-2019 section 6.6.2. Compare this to the requirements in ANSI C63.19-2019 section 6.6.4 and record the result.
- i. Calculate and record the location and number of the measurement points that satisfy the maximum undesired ABM field level and distribution requirements specified in ANSI C63.19-2019 section 6.6.4.

**Test Setup Diagram for GSM/UMTS/VoLTE/VoWiFi/VoNR**

**General Note:**

- Define the all applicable input audio level as below according to ANSI C63.19-2019 table 6.1:
  - GSM input level: -16dBm0
  - UMTS input level: -16dBm0
  - VoLTE input level: -16dBm0
  - VoNR input level: -16dBm0
  - VoWiFi input level: -16dBm0
- The test setup used for GSM/UMTS is via the callbox of CMW500 for T-coil measurement. The CMW500 input is calibrated and the relation between the analog input voltage and the internal level in dBm0 can be determined. The CMW500 can be manually configured to control the speech input level and ensure that the result is -16dBm0 for GSM/UMTS CMRS Voice connection.
- Voice over Long-Term Evolution (VoLTE) is a standard for high-speed wireless communication for mobile phones and data terminals — including IoT devices and wearables. It is based on the IP Multimedia Subsystem (IMS) network, with specific profiles for control and media planes of voice service on LTE defined by GSMA in PRD IR.92. This approach results in the voice service (control and media planes) being delivered as data flows within the LTE data bearer. This means that there is no dependency on the legacy circuit-switched voice network to be maintained.
- The test setup used for VoLTE and VoWiFi over IMS is via the callbox of CMW500 for T-coil measurement. The data application unit of the CMW500 is used to simulate the IP multimedia subsystem server. The CMW500 can be manually configured to control the speech input level and ensure that the result is -16dBm0 for VoLTE, and VoWiFi during the IMS connection.
- The test setup used for VoNR over IMS is via the callbox of CMX500 for T-coil measurement. The data application unit of the CMX500 was used to simulate the IP multimedia subsystem server. The CMW500 can be manually configured to ensure and control the speech input level result is -16dBm0 for VoNR when the device during the IMS connection.
- According to KDB 285076 D02, T-Coil testing for VoLTE, VoNR and VoWiFi requires test instrumentation that can (1) for the system to be able to establish an IP call from/to the handset under test, (2) through an IMS (IP Multimedia Subsystem) and SIP/IP server, (3) to an analog audio adapter containing the permissible set of codecs used by the device under test, and (4) inject the necessary C63.19 test tones at the average speech level for the measurement. The test setup is illustrated above Figure. The R&S CMW500 and CMX500 was used as system simulator for VoLTE, VoNR and VoWiFi T-Coil testing. The DAU (Data Application Unit) in CMW500, CMX500 integrates IMS and SIP/IP server that can establish VoLTE, VoNR and Wi-Fi calling, and transport the test tones from AMMI (Audio Magnetic Measuring Instrument) to EUT.

**<Example define the input level for GSM/UMTS/VoLTE/VoNR/VoWiFi>**

Gain Value	dBm0	Full scal Voltage	dB	AMMI audio out dBv (RMS)	AMCC Coil Out (dBv (RMS))
	3.14	1.5		0.51	
100	5.57		40	2.94	3.09
8.35	-16		18.43		-18.48
Signal Type	Duration (s)	Peak to RMS (dB)	RMS (dB)	Gain Factor	Gain Setting
1kHz sine	-	3	0	1	8.35
48k_voice_1kHz	1	16.2	-12.7	4.33	36.15
48k_voice_300-3000	2	21.6	-18.6	8.48	70.79

**7. Test Equipment List**

Manufacturer	Name of Equipment	Type/Model	Serial Number	Calibration	
				Last Cal.	Due Date
SPEAG	Audio Magnetic 1D Field Probe	AM1DV3	3093	2024/6/5	2025/6/4
SPEAG	Data Acquisition Electronics	DAE4	1691	2024/4/19	2025/4/18
SPEAG	Audio Magnetic Calibration Coil	AMCC	1049	NCR	NCR
SPEAG	Audio Measuring Instrument	AMMI	1041	NCR	NCR
Testo	Thermo-Hygrometer	HTC-1	55013	2024/1/4	2025/1/3
Testo	Thermo-Hygrometer	HTC-1	55011	2025/1/3	2026/1/2
R&S	Base Station	CMW500	143030	2024/7/4	2025/7/3
R&S	Base Station	CMX500	100303	2024/7/4	2025/7/3
SPEAG	Test Arch Phantom	N/A	N/A	NCR	NCR
SPEAG	Phone Positioner	N/A	N/A	NCR	NCR

**Note:**

1. NCR: "No-Calibration Required"

## 8. T-Coil testing for CMRS Voice

### General Note:

1. **Codec Investigation:** For a voice service/air interface, investigate the variations of codec configurations (WB, NB bit rate) and document the parameters (Primary Group, Secondary Group, longitudinal contiguous points, transverse row contiguous points, frequency response) for that voice service. It is only necessary to document this for one channel/band, the following worst investigation codec would be remarked to be used for the testing for the handset.
2. **Air Interface Investigation:**
  - a. Through Internal radio configuration investigation (e.g. bandwidth, modulation data rate, subcarrier spacings, and resource blocks) that the worst radio configuration was document as below table.
  - b. Use the worst-case codec test and document a limited set of bands/channel/bandwidths.
  - c. According to the ANSI C63.19-2019 section 6.3.3, using a frequency near the center of the frequency band perform T-coil evaluation.

### 8.1 GSM Evaluation Results

#### <Codec Investigation>

GSM Codec							
Codec	AMR NB Full Rate	AMR NB Full Rate	AMR WB Full Rate	AMR WB Full Rate	EFR NB (FR V2)	Orientation	Band / Channel
Bit rate	4.75 Kbps	12.2 Kbps	6.6 Kbps	12.65 Kbps	12.2Kbps		
Primary Group Contiguous Point Count	37	35	33	35	50	Transversal (Y)	GSM850 / 189
Secondary Group Contiguous Point Count	250	253	266	268	267		
Secondary Group Max Longitudinal	12	12	14	14	13		
Secondary Group Max Transverse	26	26	26	26	26		
Frequency Response	PASS	PASS	PASS	PASS	PASS		

Remark: According to codec investigation, the worst codec is AMR WB Full Rate 6.6Kbps.

#### <Air Interface Investigation>

Plot No.	Air Interface	Modulation / Mode	Channel	Probe Position	Primary Group Contiguous Point Count	Secondary Group Contiguous Point Count	Secondary Group Max Longitudinal	Secondary Group Max Transverse	Frequency Response Margin (dB)	Note	Ambient Noise dB (A/m)
01	GSM850	Voice	189	Transversal (Y)	33	266	14	26	1.23	Main PA	-50.11
02	GSM1900	Voice	661	Transversal (Y)	109	368	18	26	1.24	Main PA	-50.08



**8.2 UMTS Evaluation Results****<Codec Investigation>**

UMTS AMR Codec						
Codec	NB AMR 4.75Kbps	WB AMR 6.60Kbps	NB AMR 12.2Kbps	WB AMR 23.85Kbps	Orientation	Band / BW / Channel
Primary Group Contiguous Point Count	240	192	220	189	Transversal (Y)	B5 / 4182
Secondary Group Contiguous Point Count	499	479	469	478		
Secondary Group Max Longitudinal	21	20	21	21		
Secondary Group Max Transverse	26	26	26	26		
Frequency Response	PASS	PASS	PASS	PASS		

Remark: According to codec investigation, the worst codec is WB AMR 23.85Kbps.

**<Air Interface Investigation>**

Plot No.	Air Interface	Modulation / Mode	Channel	Probe Position	Primary Group Contiguous Point Count	Secondary Group Contiguous Point Count	Secondary Group Max Longitudinal	Secondary Group Max Transverse	Frequency Response Margin (dB)	Note	Ambient Noise dB (A/m)
03	WCDMA II	Voice	9400	Transversal (Y)	225	519	22	26	0.69	Main PA	-50.19
04	WCDMA IV	Voice	1413	Transversal (Y)	206	503	23	26	0.7	Main PA	-50.07
05	WCDMA V	Voice	4182	Transversal (Y)	189	478	21	26	0.7	Main PA	-50.18



**8.3 VoLTE Evaluation Results****<Codec Investigation>****LTE FDD**

VoLTE AMR Codec						
Codec	NB AMR 4.75Kbps	WB AMR 6.60Kbps	NB AMR 12.2Kbps	WB AMR 23.85Kbps	Orientation	Band / BW / Channel
Primary Group Contiguous Point Count	232	213	238	214	Transversal (Y)	B25 / 20M / 26340
Secondary Group Contiguous Point Count	494	497	499	508		
Secondary Group Max Longitudinal	22	22	21	22		
Secondary Group Max Transverse	26	26	26	26		
Frequency Response	Pass	Pass	Pass	Pass		

VoLTE EVS Codec								
Codec	EVS SWB 9.6Kbps	EVS SWB 128Kbps	EVS WB 5.9Kbps	EVS WB 128Kbps	EVS NB 5.9Kbps	EVS NB 24.4Kbps	Orientation	Band / BW / Channel
Primary Group Contiguous Point Count	239	235	220	304	211	252	Transversal (Y)	B25 / 20M / 26340
Secondary Group Contiguous Point Count	513	510	505	593	505	516		
Secondary Group Max Longitudinal	24	24	22	26	22	22		
Secondary Group Max Transverse	26	26	26	26	26	26		
Frequency Response	Pass	Pass	Pass	Pass	Pass	Pass		

Remark: According to codec investigation, the worst codec is EVS NB 5.9Kbps.

**LTE TDD**

VoLTE AMR Codec						
Codec	NB AMR 4.75Kbps	WB AMR 6.60Kbps	NB AMR 12.2Kbps	WB AMR 23.85Kbps	Orientation	Band / BW / Channel
Primary Group Contiguous Point Count	197	171	196	174	Transversal (Y)	B41 / 20M / 40620
Secondary Group Contiguous Point Count	456	449	450	448		
Secondary Group Max Longitudinal	19	19	19	19		
Secondary Group Max Transverse	26	26	26	26		
Frequency Response	Pass	Pass	Pass	Pass		

VoLTE EVS Codec							
Codec	EVS SWB 9.6Kbps	EVS SWB 128Kbps	EVS WB 5.9Kbps	EVS WB 128Kbps	EVS NB 5.9Kbps	EVS NB 24.4Kbps	Orientation Band / BW / Channel
Primary Group Contiguous Point Count	214	182	204	179	170	193	Transversal (Y) B41 / 20M / 40620
Secondary Group Contiguous Point Count	464	463	480	460	448	442	
Secondary Group Max Longitudinal	19	20	20	19	19	19	
Secondary Group Max Transverse	26	26	26	26	26	26	
Frequency Response	Pass	Pass	Pass	Pass	Pass	Pass	

Remark: According to codec investigation, the worst codec is EVS NB 5.9Kbps.

**<Air Interface Investigation>**

Air Interface	BW (MHz)	Modulation / Mode	RB Size	RB offset	Channel	UL-DL Configuration	Probe Position	Primary Group Contiguous Point Count	Frequency Response
LTE B41_PC3	20	QPSK	1	0	40620	0	Transversal (Y)	178	PASS
LTE B41_PC3	20	QPSK	100	0	40620	0	Transversal (Y)	198	PASS
LTE B41_PC3	20	16QAM	1	0	40620	0	Transversal (Y)	192	PASS
LTE B41_PC3	20	64QAM	1	0	40620	0	Transversal (Y)	192	PASS
LTE B41_PC3	20	256QAM	1	0	40620	0	Transversal (Y)	184	PASS
LTE B41_PC3	5	QPSK	1	0	40620	0	Transversal (Y)	191	PASS
UL CA B41_PC3	20	QPSK	1	0	40620	0	Transversal (Y)	175	PASS
LTE B41_PC2	20	QPSK	1	0	40620	1	Transversal (Y)	170	PASS
LTE B25	1.4	QPSK	1	0	26340	0	Transversal (Y)	201	PASS

Plot No.	Air Interface	BW (MHz)	Modulation / Mode	RB Size	RB offset	Channel	Probe Position	Primary Group Contiguous Point Count	Secondary Group Contiguous Point Count	Secondary Group Max Longitudinal	Secondary Group Max Transverse	Frequency Response Margin (dB)	Note	Ambient Noise dB (A/m)
06	LTE Band 7	20M	QPSK	1	0	21100	Transversal (Y)	192	480	21	26	0.54	Main PA	-50.14
07	LTE Band 7	20M	QPSK	1	0	21100	Transversal (Y)	166	438	18	26	0.7	Other Path	-50.11
08	LTE Band 12(17)	10M	QPSK	1	0	23095	Transversal (Y)	226	523	23	26	0.85	Main PA	-50.06
09	LTE Band 13	10M	QPSK	1	0	23230	Transversal (Y)	231	534	26	26	0.95	Main PA	-50.18
10	LTE Band 14	10M	QPSK	1	0	23330	Transversal (Y)	241	540	23	26	0.56	Main PA	-50.09
11	LTE Band 25(2)	20M	QPSK	1	0	26340	Transversal (Y)	211	505	22	26	1.37	Main PA	-50.18
12	LTE Band 2	20M	QPSK	1	0	18900	Transversal (Y)	184	461	19	26	0.14	Other Path	-50.19
13	LTE Band 26 (5)	15M	QPSK	1	0	26865	Transversal (Y)	210	509	22	26	0.58	Main PA	-50.18
14	LTE Band 30	10M	QPSK	1	0	27710	Transversal (Y)	199	493	21	26	0.62	Main PA	-50.09
15	LTE Band 66(4)	20M	QPSK	1	0	132322	Transversal (Y)	205	495	22	26	0.48	Main PA	-50.16
16	LTE Band 66	20M	QPSK	1	0	132322	Transversal (Y)	229	526	23	26	1.02	Other Path	-50.09
17	LTE Band 71	20M	QPSK	1	0	133297	Transversal (Y)	220	520	23	26	0.68	Main PA	-50.14
18	LTE Band 41 HPUE	20M	QPSK	1	0	40620	Transversal (Y)	170	448	19	26	0.93	Main PA	-50.15
19	LTE Band 42 Part 27Q	20M	QPSK	1	0	42590	Transversal (Y)	159	434	19	26	0.89	Main PA	-50.11
20	LTE Band 48(43)	20M	QPSK	1	0	55830	Transversal (Y)	161	432	19	26	0.78	Main PA	-50.02

**8.4 VoNR Evaluation Results****<Codec Investigation>****5G NR FDD**

VoNR AMR Codec						
Codec	NB AMR 4.75Kbps	WB AMR 6.60Kbps	NB AMR 12.2Kbps	WB AMR 23.85Kbps	Orientation	Band / BW / Channel
Primary Group Contiguous Point Count	241	219	240	214	Transversal (Y)	n7 / 50M / 507000
Secondary Group Contiguous Point Count	514	516	512	512		
Secondary Group Max Longitudinal	22	23	22	23		
Secondary Group Max Transverse	26	26	26	26		
Frequency Response	Pass	Pass	Pass	Pass		

VoNR EVS Codec							
Codec	EVS SWB 9.6Kbps	EVS SWB 128Kbps	EVS WB 5.9Kbps	EVS WB 128Kbps	EVS NB 5.9Kbps	EVS NB 24.4Kbps	Orientation Band / BW / Channel
Primary Group Contiguous Point Count	321	322	192	219	216	260	Transversal (Y) n7 / 50M / 507000
Secondary Group Contiguous Point Count	504	510	508	511	508	529	
Secondary Group Max Longitudinal	22	22	22	22	22	23	
Secondary Group Max Transverse	26	26	26	26	26	26	
Frequency Response	Pass	Pass	Pass	Pass	Pass	Pass	

Remark: According to codec investigation, the worst codec is EVS WB 5.9Kbps.

**5G NR TDD**

VoNR AMR Codec						
Codec	NB AMR 4.75Kbps	WB AMR 6.60Kbps	NB AMR 12.2Kbps	WB AMR 23.85Kbps	Orientation	Band / BW / Channel
Primary Group Contiguous Point Count	113	106	112	109	Transversal (Y)	n41 / 100M / 518598
Secondary Group Contiguous Point Count	346	362	344	363		
Secondary Group Max Longitudinal	17	18	18	19		
Secondary Group Max Transverse	26	26	26	26		
Frequency Response	Pass	Pass	Pass	Pass		

VoNR EVS Codec								
Codec	EVS SWB 9.6Kbps	EVS SWB 128Kbps	EVS WB 5.9Kbps	EVS WB 128Kbps	EVS NB 5.9Kbps	EVS NB 24.4Kbps	Orientation	Band / BW / Channel
Primary Group Contiguous Point Count	172	174	82	103	104	105	Transversal (Y)	n41 / 100M / 518598
Secondary Group Contiguous Point Count	361	360	340	355	356	337		
Secondary Group Max Longitudinal	18	18	18	18	18	18		
Secondary Group Max Transverse	26	26	26	26	26	26		
Frequency Response	Pass	Pass	Pass	Pass	Pass	Pass		

Remark: According to codec investigation, the worst codec is EVS WB 5.9Kbps.



## <Air Interface Investigation>

Air Interface	BW (MHz)	Modulation / Mode	RB Size	RB offset	Channel	Probe Position	Primary Group Contiguous Point Count	Frequency Response
5G NR B41 PC3	100	DFT-PI/2 BPSK	1	1	518598	Transversal (Y)	145	PASS
5G NR B41 PC3	100	DFT-PI/2 BPSK	270	0	518598	Transversal (Y)	158	PASS
5G NR B41 PC3	100	DFT-QPSK	1	1	518598	Transversal (Y)	158	PASS
5G NR B41 PC3	100	DFT-16QAM	1	1	518598	Transversal (Y)	152	PASS
5G NR B41 PC3	100	DFT-64QAM	1	1	518598	Transversal (Y)	158	PASS
5G NR B41 PC3	100	DFT-256QAM	1	1	518598	Transversal (Y)	158	PASS
5G NR B41 PC3	100	CP-QPSK	1	1	518598	Transversal (Y)	153	PASS
5G NR B41 PC3	10	DFT-QPSK	1	1	518598	Transversal (Y)	152	PASS
5G NR B41 PC2	100	DFT-QPSK	1	1	518598	Transversal (Y)	82	PASS
5G NR B41 PC1.5	100	DFT-QPSK	1	1	518598	Transversal (Y)	85	PASS
5G NR B7	50	DFT-QPSK	1	1	507000	Transversal (Y)	192	PASS
5G NR B7	5	DFT-QPSK	1	1	507000	Transversal (Y)	197	PASS

Plot No.	Air Interface	BW (MHz)	Modulation / Mode	RB Size	RB offset	Channel	Probe Position	Primary Group Contiguous Point Count	Secondary Group Contiguous Point Count	Secondary Group Max Longitudinal	Secondary Group Max Transverse	Frequency Response Margin (dB)	Note	Ambient Noise dB (A/m)
21	FR1 n7	50M	QPSK	1	1	507000	Transversal (Y)	192	508	22	26	0.75	Main PA	-50.09
22	FR1 n7	50M	QPSK	1	1	507000	Transversal (Y)	195	505	22	26	1.29	Other Path	-50.07
23	FR1 n12	15M	QPSK	1	1	141500	Transversal (Y)	203	524	23	26	1.03	Main PA	-50.18
24	FR1 n12	15M	QPSK	1	1	141500	Transversal (Y)	172	503	22	26	0.72	Other Path	-50.19
25	FR1 n14	10M	QPSK	1	1	158600	Transversal (Y)	194	515	24	26	1.21	Main PA	-50.13
26	FR1 n25(2)	40M	QPSK	1	1	376500	Transversal (Y)	243	566	24	26	0.78	Main PA	-50.02
26_1	FR1 n25(2) UL MIMO	40M	QPSK	1	1	376500	Transversal (Y)	213	522	22	26	0.47	Main PA	-50.09
27	FR1 n2	40M	QPSK	1	1	376000	Transversal (Y)	190	472	20	26	0.64	Other Path	-50.17
28	FR1 n26(5)	20M	QPSK	1	1	166300	Transversal (Y)	201	516	22	26	0.87	Main PA	-50.14
29	FR1 n5	20M	QPSK	1	1	167300	Transversal (Y)	195	513	23	26	0.95	Other Path	-50.06
30	FR1 n26	20M	QPSK	1	1	166300	Transversal (Y)	198	513	23	26	0.77	Other Path	-50.09
31	FR1 n30	10M	QPSK	1	1	462000	Transversal (Y)	278	614	26	26	1.02	Main PA	-50.22
32	FR1 n66	45M	QPSK	1	1	349000	Transversal (Y)	196	508	21	26	0.67	Main PA	-50.2
33	FR1 n66	45M	QPSK	1	1	349000	Transversal (Y)	190	485	20	26	1.01	Other Path	-50.18
33_1	FR1 n66 UL MIMO	45M	QPSK	1	1	349000	Transversal (Y)	211	510	21	26	0.65	Main PA	-50.15
34	FR1 n70	15M	QPSK	1	1	340500	Transversal (Y)	268	603	26	26	0.73	Main PA	-50.23
35	FR1 n71	35M	QPSK	1	1	136100	Transversal (Y)	204	529	24	26	0.38	Main PA	-50.09
36	FR1 n41 HPUE	100M	QPSK	1	1	518598	Transversal (Y)	82	340	18	26	0.28	Main PA	-50.15
36_1	FR1 n41 HPUE UL MIMO	100M	QPSK	1	1	518598	Transversal (Y)	90	333	16	26	1.01	Main PA	-50.16
37	FR1 n48	40M	QPSK	1	1	641666	Transversal (Y)	144	420	18	26	1.15	Main PA	-50.13
38	FR1 n48	40M	QPSK	1	1	641666	Transversal (Y)	92	378	17	26	1.14	Other Path	-50.01
38_1	FR1 n48 UL MIMO	40M	QPSK	1	1	641666	Transversal (Y)	144	427	20	26	0.84	Main PA	-50.19
39	FR1 n77(78) Part 270 HPUE	100M	QPSK	1	1	656000	Transversal (Y)	131	431	21	26	0.58	Main PA	-50.04
40	FR1 n77(78) Part 27Q HPUE	100M	QPSK	1	1	633332	Transversal (Y)	84	365	18	26	0.66	Main PA	-50.09
41	FR1 n77(78) Part 270 HPUE UL MIMO	100M	QPSK	1	1	656000	Transversal (Y)	97	398	22	26	0.97	Main PA	-50.22
42	FR1 n77(78) Part 27Q HPUE UL MIMO	100M	QPSK	1	1	633332	Transversal (Y)	172	485	20	26	0.89	Main PA	-50.2

## 8.5 VoWiFi Evaluation Results

### <Codec Investigation>

VoWiFi AMR Codec						
Codec	NB AMR 4.75Kbps	WB AMR 6.60Kbps	NB AMR 12.2Kbps	WB AMR 23.85Kbps	Orientation	Band / Channel
Primary Group Contiguous Point Count	239	223	248	209	Transversal (Y)	2.4GHz WLAN / 6
Secondary Group Contiguous Point Count	506	517	515	499		
Secondary Group Max Longitudinal	22	22	22	21		
Secondary Group Max Transverse	26	26	26	26		
Frequency Response	Pass	Pass	Pass	Pass		

VoWiFi EVS Codec							
Codec	EVS SWB 9.6Kbps	EVS SWB 128Kbps	EVS WB 5.9Kbps	EVS WB 128Kbps	EVS NB 5.9Kbps	EVS NB 24.4Kbps	Orientation
Primary Group Contiguous Point Count	269	253	263	257	256	287	Transversal (Y)
Secondary Group Contiguous Point Count	540	551	557	556	553	554	
Secondary Group Max Longitudinal	24	24	24	24	24	24	
Secondary Group Max Transverse	26	26	26	26	26	26	
Frequency Response	Pass	Pass	Pass	Pass	Pass	Pass	

Remark: According to codec investigation, the worst codec is WB AMR 23.85Kbps.


**<Air Interface Investigation>**

Frequency Bands	Air Interface	BW (MHz)	Modulation / Mode	Channel	Probe Position	Primary Group Contiguous Point Count	Frequency Response
WLAN 2.4GHz	802.11b	20	1M	6	Transversal (Y)	209	PASS
	802.11g	20	6M	6	Transversal (Y)	224	PASS
	802.11n-HT20	20	MCS0	6	Transversal (Y)	222	PASS
	802.11n-HT40	40	MCS0	6	Transversal (Y)	222	PASS
	802.11ax-HE20	20	MCS0	6	Transversal (Y)	228	PASS
	802.11ax-HE40	40	MCS0	6	Transversal (Y)	222	PASS
	802.11b	20	11M	6	Transversal (Y)	215	PASS
WLAN 5GHz	802.11a	20	6M	40	Transversal (Y)	213	PASS
	802.11n-HT20	20	MCS0	40	Transversal (Y)	217	PASS
	802.11n-HT40	40	MCS0	38	Transversal (Y)	219	PASS
	802.11ac-VHT20	20	MCS0	40	Transversal (Y)	217	PASS
	802.11ac-VHT40	40	MCS0	38	Transversal (Y)	217	PASS
	802.11ac-VHT80	80	MCS0	42	Transversal (Y)	216	PASS
	802.11ac-VHT160	160	MCS0	50	Transversal (Y)	214	PASS
	802.11ax-HE20	20	MCS0	40	Transversal (Y)	220	PASS
	802.11ax-HE40	40	MCS0	38	Transversal (Y)	222	PASS
	802.11ax-HE80	80	MCS0	42	Transversal (Y)	219	PASS
	802.11ax-HE160	160	MCS0	50	Transversal (Y)	218	PASS
	802.11a	20	54M	40	Transversal (Y)	222	PASS

Plot No.	Air Interface	Modulation / Mode	Channel	Probe Position	Ant Status	Primary Group Contiguous Point Count	Secondary Group Contiguous Point Count	Secondary Group Max Longitudinal	Secondary Group Max Transverse	Frequency Response Margin (dB)	Note	Ambient Noise dB (A/m)
43	WLAN2.4GHz	802.11b 1Mbps	6	Transversal (Y)	Ant 6+Ant7	209	499	21	26	0.88	MIMO	-50.11
43_1	WLAN2.4GHz	802.11b 1Mbps	6	Transversal (Y)	Ant 7	202	481	20	26	0.83	SISO	-50.21
43_2	WLAN2.4GHz	802.11b 1Mbps	6	Transversal (Y)	Ant 6	192	472	19	26	0.72	SISO	-50.16
44	WLAN5GHz	802.11a 6Mbps	40	Transversal (Y)	Ant 5+Ant7	213	504	22	26	0.56	MIMO	-50.08
44_1	WLAN5GHz	802.11a 6Mbps	40	Transversal (Y)	Ant 7	202	492	21	26	1.21	SISO	-51.1
44_2	WLAN5GHz	802.11a 6Mbps	40	Transversal (Y)	Ant 5	154	408	18	26	0.81	SISO	-50.06
45	WLAN5GHz	802.11a 6Mbps	56	Transversal (Y)	Ant 5+Ant7	220	513	22	26	0.92	MIMO	-50.19
45_1	WLAN5GHz	802.11a 6Mbps	56	Transversal (Y)	Ant 7	202	493	21	26	0.97	SISO	-50.03
45_2	WLAN5GHz	802.11a 6Mbps	56	Transversal (Y)	Ant 5	154	422	18	26	0.79	SISO	-50.08
46	WLAN5GHz	802.11a 6Mbps	116	Transversal (Y)	Ant 5+Ant7	215	505	21	26	0.9	MIMO	-50.09
46_1	WLAN5GHz	802.11a 6Mbps	116	Transversal (Y)	Ant 7	205	491	21	26	0.75	SISO	-50.1
46_2	WLAN5GHz	802.11a 6Mbps	116	Transversal (Y)	Ant 5	216	498	22	26	0.76	SISO	-50.12
47	WLAN5GHz	802.11a 6Mbps	149	Transversal (Y)	Ant 5+Ant7	214	506	22	26	0.8	MIMO	-50.14
47_1	WLAN5GHz	802.11a 6Mbps	149	Transversal (Y)	Ant 7	175	449	19	26	0.67	SISO	-50.16
47_2	WLAN5GHz	802.11a 6Mbps	149	Transversal (Y)	Ant 5	199	476	21	26	0.52	SISO	-50.19

**Remark:**

1. Phone Condition: Mute on; Backlight off; Max Volume
2. Hearing Aid mode (Phone -> Setting -> Accessibility->Hearing aids) was set to on for improving the audio signal performance for HAC T-Coil compliance.

**Test Engineer :** Martin Li, Varus Wang, Light Wang, Ricky Gu



## 9. Uncertainty Assessment

The evaluation of uncertainty by the statistical analysis of a series of observations is termed a Type A evaluation of uncertainty. The evaluation of uncertainty by means other than the statistical analysis of a series of observation is termed a Type B evaluation of uncertainty. Each component of uncertainty, however evaluated, is represented by an estimated standard deviation, termed standard uncertainty, which is determined by the positive square root of the estimated variance. The combined standard uncertainty of the measurement result represents the estimated standard deviation of the result. It is obtained by combining the individual standard uncertainties of both Type A and Type B evaluation using the usual "root-sum-squares" (RSS) methods of combining standard deviations by taking the positive square root of the estimated variances. Expanded uncertainty is a measure of uncertainty that defines an interval about the measurement result within which the measured value is confidently believed to lie. It is obtained by multiplying the combined standard uncertainty by a coverage factor. For purpose of this document, a coverage factor two is used, which corresponds to confidence interval of about 95 %. The DASY uncertainty Budget is showed in Table 8.2.

The judgment of conformity in the report is based on the measurement results excluding the measurement uncertainty.

Error Description	Uncertainty Value (±%)	Probability Distribution	Divisor	Ci (ABMd)	Ci (ABMu)	Standard Uncertainty (ABMd) (±%)	Standard Uncertainty (ABMu) (±%)
<b>Probe Sensitivity</b>							
Reference Level	3.0	Normal	1	1	1	3.0	3.0
AMCC Geometry	0.4	Rectangular	$\sqrt{3}$	1	1	0.2	0.2
AMCC Current	1.0	Rectangular	$\sqrt{3}$	1	1	0.6	0.6
Probe Positioning During Calibrate	0.1	Rectangular	$\sqrt{3}$	1	1	0.1	0.1
Noise Contribution	0.7	Rectangular	$\sqrt{3}$	0.0143	1	0.0	0.4
Frequency Slope	5.9	Rectangular	$\sqrt{3}$	0.1	1	0.3	3.4
<b>Probe System</b>							
Repeatability / Drift	1.0	Rectangular	$\sqrt{3}$	1	1	0.6	0.6
Linearity / Dynamic Range	0.6	Rectangular	$\sqrt{3}$	1	1	0.3	0.3
Acoustic Noise	1.0	Rectangular	$\sqrt{3}$	0.1	1	0.1	0.6
Probe Angle	1.0	Rectangular	$\sqrt{3}$	1	1	0.6	0.6
Spectral Processing	0.9	Rectangular	$\sqrt{3}$	1	1	0.5	0.5
Integration Time	0.6	Normal	1	1	5	0.6	3.0
Field Disturbation	0.2	Rectangular	$\sqrt{3}$	1	1	0.1	0.1
<b>Test Signal</b>							
Reference Signal Spectral Response	0.6	Rectangular	$\sqrt{3}$	0.0	0.3	0.0	0.3
<b>Positioning</b>							
Probe Positioning	1.9	Rectangular	$\sqrt{3}$	1	1	1.1	1.1
Phantom Thickness	0.9	Rectangular	$\sqrt{3}$	1	1	0.5	0.5
EUT Positioning	1.9	Rectangular	$\sqrt{3}$	1	1	1.1	1.1
<b>External Contributions</b>							
RF Interference	0.0	Rectangular	$\sqrt{3}$	1	0.3	0.0	0.0
Test Signal Variation	2.0	Rectangular	$\sqrt{3}$	1	1	1.2	1.2
<b>Combined Standard Uncertainty</b>						<b>3.9%</b>	<b>6.0%</b>
<b>Coverage Factor for 95 %</b>						<b>K = 2</b>	
<b>Expanded Uncertainty</b>						<b>7.7 %</b>	<b>11.9 %</b>
Declaration of Conformity: The test results with all measurement uncertainty excluded are presented in accordance with the regulation limits or requirements declared by manufacturers.							
Comments and Explanations: The declared of product specification for EUT presented in the report are provided by the manufacturer, and the manufacturer takes all the responsibilities for the accuracy of product specification.							

### Uncertainty Budget of audio band magnetic measurement

**10. References**

- [1] ANSI C63.19-2019, "American National Standard for Methods of Measurement of Compatibility between Wireless Communications Devices and Hearing Aids", Aug. 2019.
- [2] FCC KDB 285076 D01v06r04, "Equipment Authorization Guidance for Hearing Aid Compatibility", Sep. 2023.
- [3] FCC KDB 285076 D02v04, "Guidance for performing T-Coil tests for air interfaces supporting voice over IP (e.g., LTE and WiFi) to support CMRS based telephone services", Feb 2022
- [4] FCC KDB 285076 D03v01r07, "Hearing aid compatibility frequently asked questions", Dec. 2024
- [5] SPEAG DASY System Handbook