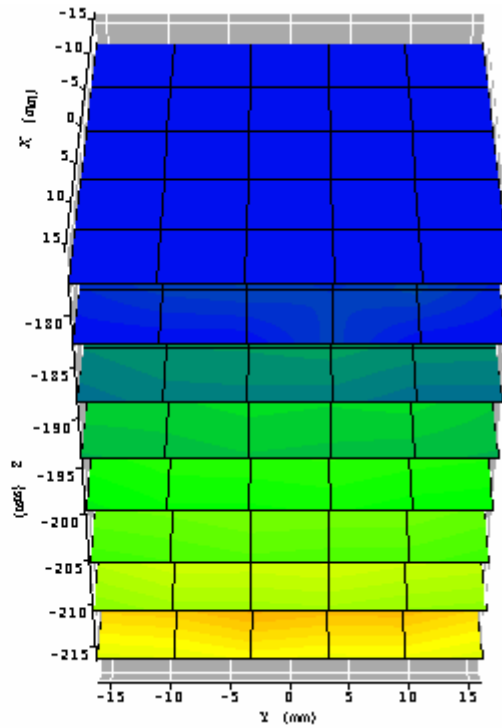


Normal scan setting (default)



System validation scan setting

1. Normal scan setting by default for evaluation test:

X	depth extent	34mm	10 steps
Y	lateral extent	32mm	5 steps
Z	lateral extent	32mm	5 steps

As above scanned cube

2. System validation scan setting:

X	lateral extent	32mm	5 steps
Y	lateral extent	32mm	5 steps
Z	depth extent	34mm	7 steps

As above scanned cube