

Unpacking List



Printer



User Manual



Paper roll (optional)



Note:

1. The actual contents inside the box are subject to the shipping list.
2. The nameplate is affixed to the bottom of the printer.

User Guide

Power Button Status
Press and hold for two seconds to turn ON/OFF

Charging Status for First-Time Use After Purchase

- We recommend fully charging before use
- You can charge using a power adapter or a computer USB port (Adapter not included in shipment)*

Indicator Definitions

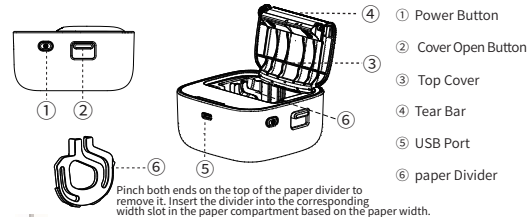
- Steady On: Ready/Charging Completed
- Slow Flashing: Charging, Positioning Error, Out of Paper
- Fast Flashing: Firmware Upgrade
- Fast-Slow Alternating (Fast flash twice, slow flash once): High Temperature
- Slow-Fast Alternating (Slow flash twice, fast flash once): Low Battery

Note: Check error prompts within the APP

*Note: If using a power adapter, please purchase and use one that is CCC certified and meets standard requirements.



Appearance and Components



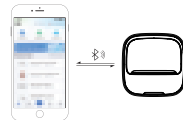
Download the APP

Scan the QR code below to download and install the APP:



Connect the Device

Register and log in to the APP, click "Add Device", select "M1", and connect the device via Bluetooth search.



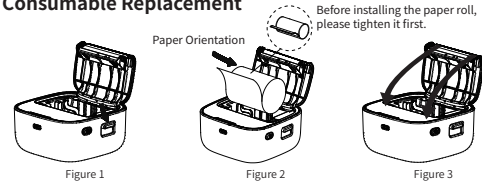
APP Settings



Simple Operations APP Settings

- You can view remaining battery power, firmware version, and other information in Device Management.

Consumable Replacement



- As shown in Figure 1, press down the cover open button to open the top cover.
- When replacing consumables, adjust the position of the paper divider according to the direction shown in Figure 2, insert the divider into the corresponding width slot in the paper compartment (the paper roll can only be placed on the right side).
- After loading the paper, close the top cover, ensuring both sides are pressed into place.

When replacing consumables in the printer, do not touch the print head to prevent overheating burns.

Safety and Precautions



Battery Overheating Battery Management and Precautions

- When charging is complete, we recommend unplugging the charging cable.
- To avoid fire, do not charge in high-temperature locations (such as saunas, near campfires, etc.).



Burn Hazard Print Head Overheating

- After printing, do not touch the print head directly to prevent overheating burns.



Charger Precautions Print Head Management and Precautions

- Improper charging may damage the print head.
- We recommend not using it in high humidity or dusty areas.



Charging Port Damage Precautions During Charging

- Please gently insert or remove the charging cable to prevent damage to the charging port from excessive force.

Xiamen Hanin Co., Ltd.
Official Website: www.hpvt.com
Address: Room 305A, Angye Building, Pioneer Park,
Torch High-tech Zone, Xiamen City, Fujian Province, P.R. China
FCC ID: 2AUTE-M1



Product Specifications

Printing Method	Direct Thermal Printing
Product Dimensions	95.2*93.5*49.8mm
Label Width	25/30/40/50mm
Consumable Outer Diameter	Max 35mm
Consumable Type	Thermal Label Paper
Battery Capacity	1200mAh 3.7V
Print Density	203 dpi
Operating Temperature	0°C~40°C
Charging Method	Type-C 5V Charging

FCC

This device complies with part 15 of the FCC Rules. Operation is subject to the following two conditions: (1) this device may not cause harmful interference, and (2) this device must accept any interference received, including interference that may cause undesired operation.

Warning: Any changes or modifications not expressly approved by the party responsible for compliance could void the user's authority to operate the equipment.

NOTE: This equipment has been tested and found to comply with the limits for a Class B digital device, pursuant to Part 15 of the FCC Rules. These limits are designed to provide reasonable protection against harmful interference in a residential installation. This equipment generates, uses and can radiate radio frequency energy and, if not installed and used in accordance with the instructions, may cause harmful interference to radio communications.

However, there is no guarantee that interference will not occur in a particular installation. If this equipment does cause harmful interference to radio or television reception, which can be determined by turning the equipment off and on, the user is encouraged to try to correct the interference by one or more of the following measures:

- Reorient or relocate the receiving antenna.
- Increase the separation between the equipment and receiver.
- Connect the equipment into an outlet on a circuit different from that to which the receiver is connected.
- Consult the dealer or an experienced radio/TV technician for help.

FCC Radiation Exposure Statement

The device has been evaluated to meet general RF exposure requirement.
The device can be used in portable exposure condition without restriction.

