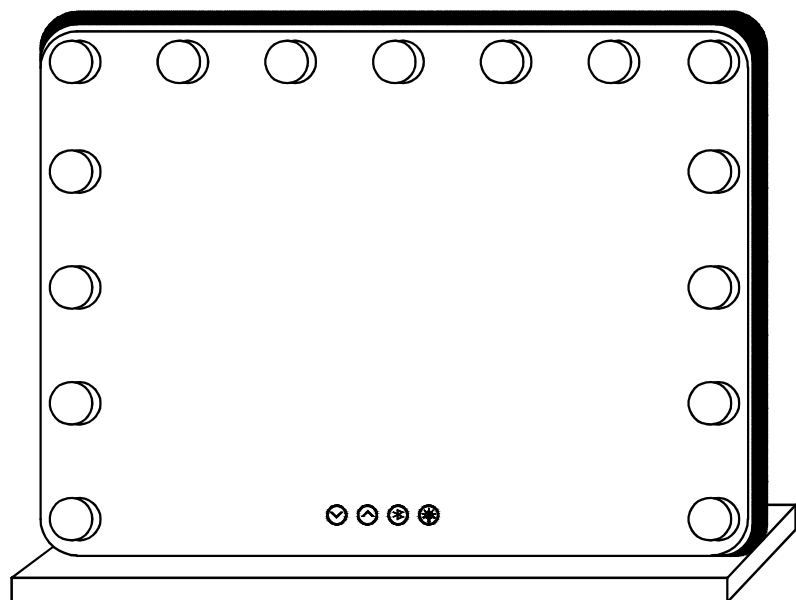


Model:GMMR02



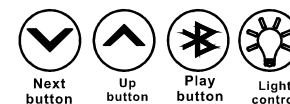
INSTRUCTION MANUAL

LED Hollywood Style
Vanity Mirror

Before You Start

- ⚠ Please read all instructions carefully.
- ⚠ Retain instructions for future reference.
- ⚠ Separate and count all parts and hardware.
- ⚠ Read through each step carefully and follow the proper order.
- ⚠ We recommend that, where possible, all items are assembled near to the area in which they will be placed in use, to avoid moving the product unnecessarily once assembled.
- ⚠ Always place the product on a flat, steady and stable surface.
- ⚠ Keep all small parts and packaging materials for this product away from babies and children as they potentially pose a serious choking hazard.

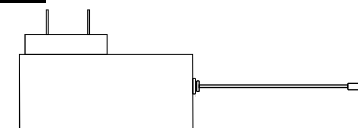
BUTTON CONTROLS



- ✓ Short press change to next song
- ↑ Short press change to the up song
- ⌘ Long press to turn on/off blue-tooth, and short press to play or pause
- 💡 short press turn on/off the light and continue short press to change the light color: warm/ natural/cool
long press to adjust brightness

RGB refer to Manual of remote control

CONTAINED ITEMS

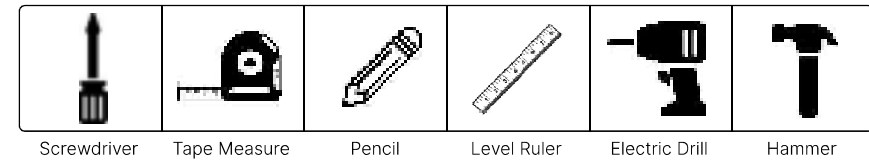


12V Power Adapter

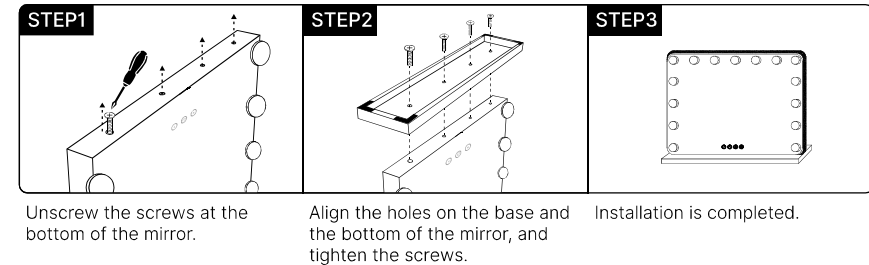
Please use included power adapter, Do not use an unsuitable power adapter, otherwise it could damage the mirror electronics.

INSTALLATION STEPS

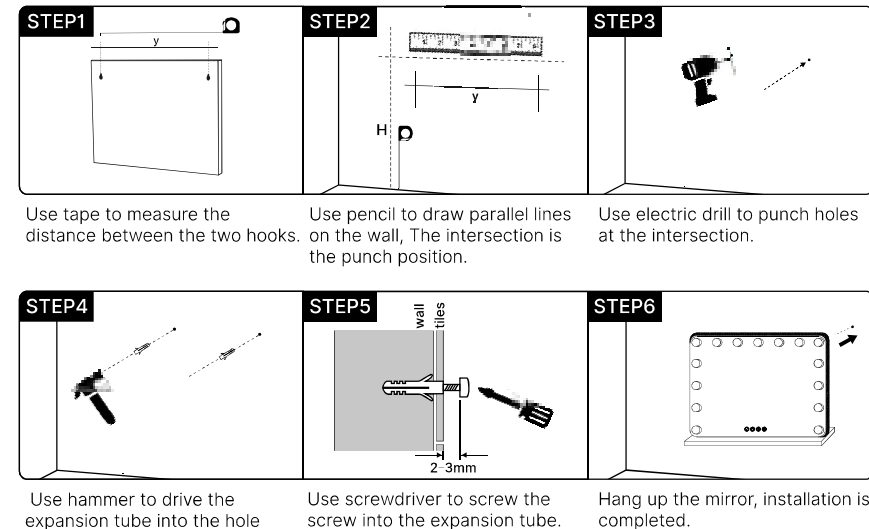
Preparation Tools (Not Included) :



Desktop



Wall-mounted



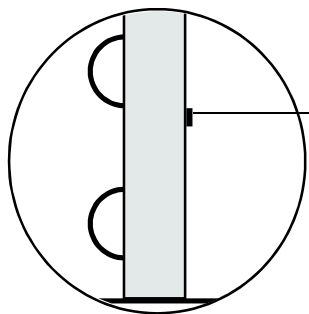
Dear Customer

If you have any questions regarding the product, function, or warranty, welcome to contact our customer support. We provide assistance and feedback to your inquiries. Customer support is open during office hours every weekday, 5 days a week.

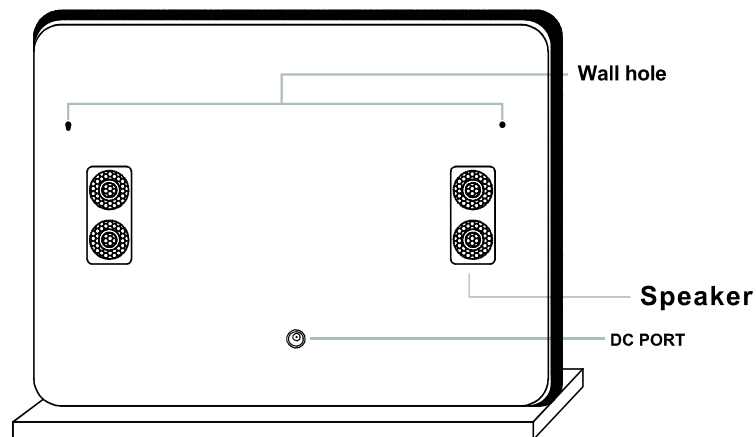
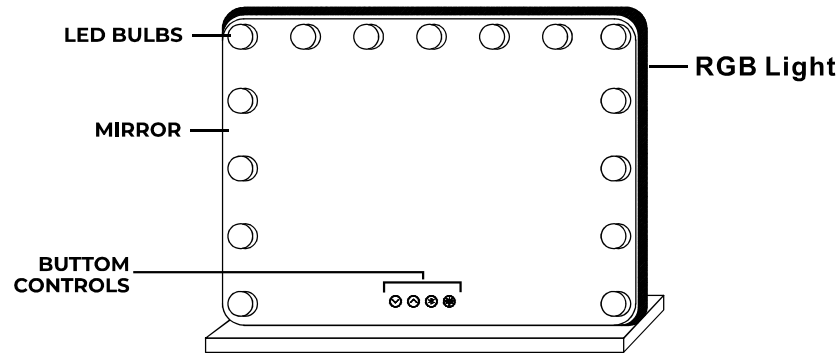


Made in China

CONTAINED ITEMS



Connect the power to use LED Mirror lights.
Disconnect the power to off LED Mirror lights.



FCC Statement

1. This device complies with Part 15 of the FCC Rules. Operation is subject to the following two conditions:

(1) This device may not cause harmful interference.

(2) This device must accept any interference received, including interference that may cause undesired operation.

2. Changes or modifications not expressly approved by the party responsible for compliance could void the user's authority to operate the equipment.

Note: This equipment has been tested and found to comply with the limits for a class B digital device, pursuant to Part 15 of the FCC Rules. These limits are designed to provide reasonable protection against harmful interference in a residential installation.

This equipment generates uses and can radiate radio frequency energy and, if not installed and used in accordance with the instructions, may cause harmful interference to radio communications. However, there is no guarantee that interference will not occur in a particular installation. If this equipment does cause harmful interference to radio or television reception, which can be determined by turning the equipment off and on, the user is encouraged to try to correct the interference by one or more of the following measures:

- Reorient or relocate the receiving antenna.
- Increase the separation between the equipment and receiver.
- Connect the equipment into an outlet on a circuit different from that to which the receiver is connected.
- Consult the dealer or an experienced radio/TV technician for help.

The device has been evaluated to meet general RF exposure requirement. This equipment should be installed and operated with a minimum distance of 20 cm between the radiator and your body.