

Shenzhen Sonoff Technologies Co., Ltd.  
Address: 1001, BLDG8, Lianhua Industrial Park, Shenzhen, GD China  
Tel: 0755-89580907 Fax: 0755-89580907  
Email: cert@itead.cc

## DECLARATION OF SIMILARITY

Date: 2021-12-30

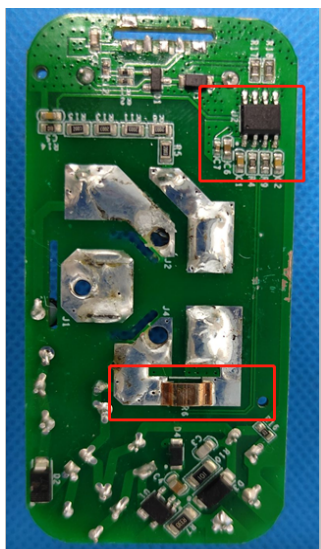
### FEDERAL COMMUNICATIONS COMMISSION

Authorization and Evaluation Division  
7435 Oakland Mills Road  
Columbia, MD 21046

Dear Sir or Madam:

We, Shenzhen Sonoff Technologies Co., Ltd., hereby declare that the product: Zigbee Smart Plug, FCC ID: 2APN5S40ZBTPB. model: S40ZBTPB Lite is electrically identical with the model: S40ZBTPB which was tested by China Certification ICT Co., Ltd (Dongguan) with the same electromagnetic emissions and electromagnetic compatibility characteristics.

A description of the differences between those models and that are declared similar are as follows:



S40ZBTPB is different from S40ZBTPB Lite in that there is an electric quantity measurement and detection circuit, the rest are the same.

Please contact me should there be need for any additional clarification or information.

Best Regards,

*Jerry Shi*

Printed Name: Jerry Shi

Title: Manager