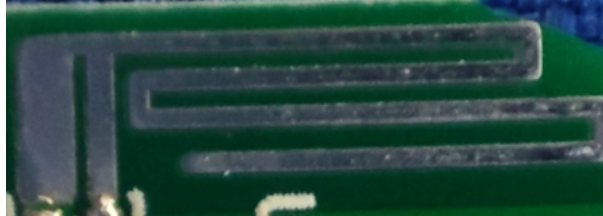


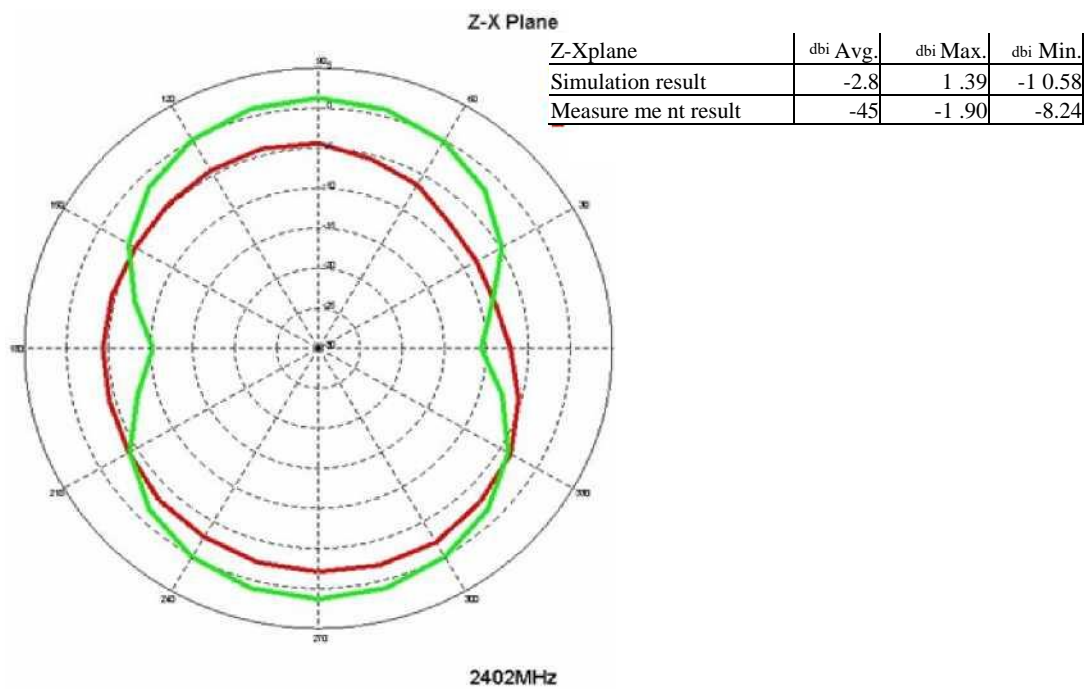
### 1. Antenna Description:

Antenna plate	PCB Antenna
Antenna peak gain	2.3 dBi
Frequency range	2.402MHz~2.480MHz
Connect type	Direct Connect

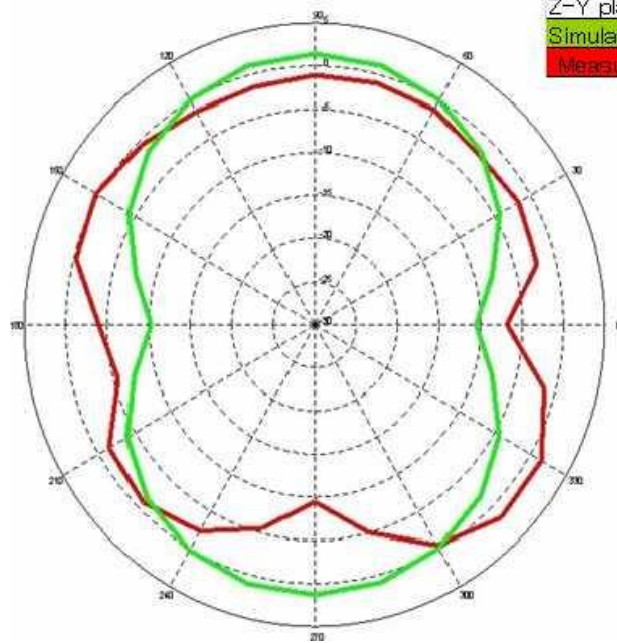
### 2. Picture of antenna



### 3. Radiation pattern @2.402GHz



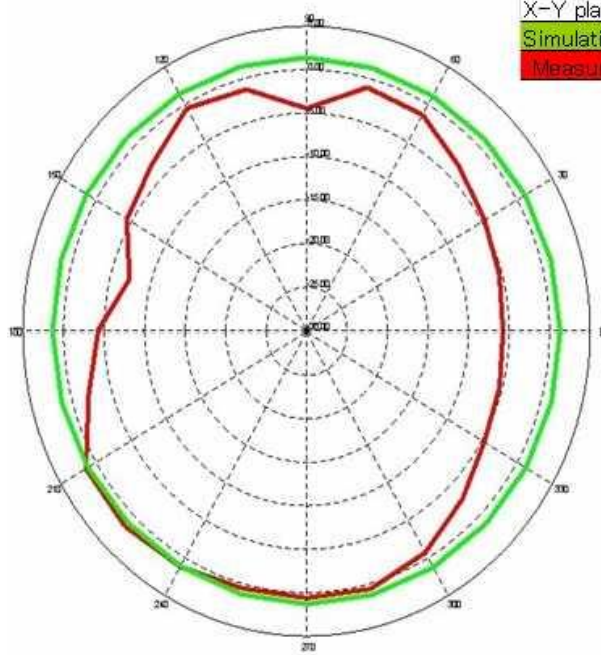
Z-Y Plane



2402MHz

Z-Y plane	dBi Avg.	dBi Max.	dBi Min.
Simulation result	-2.8	1.45	-10.58
Measurement result	-2.1	1.7	-9.42

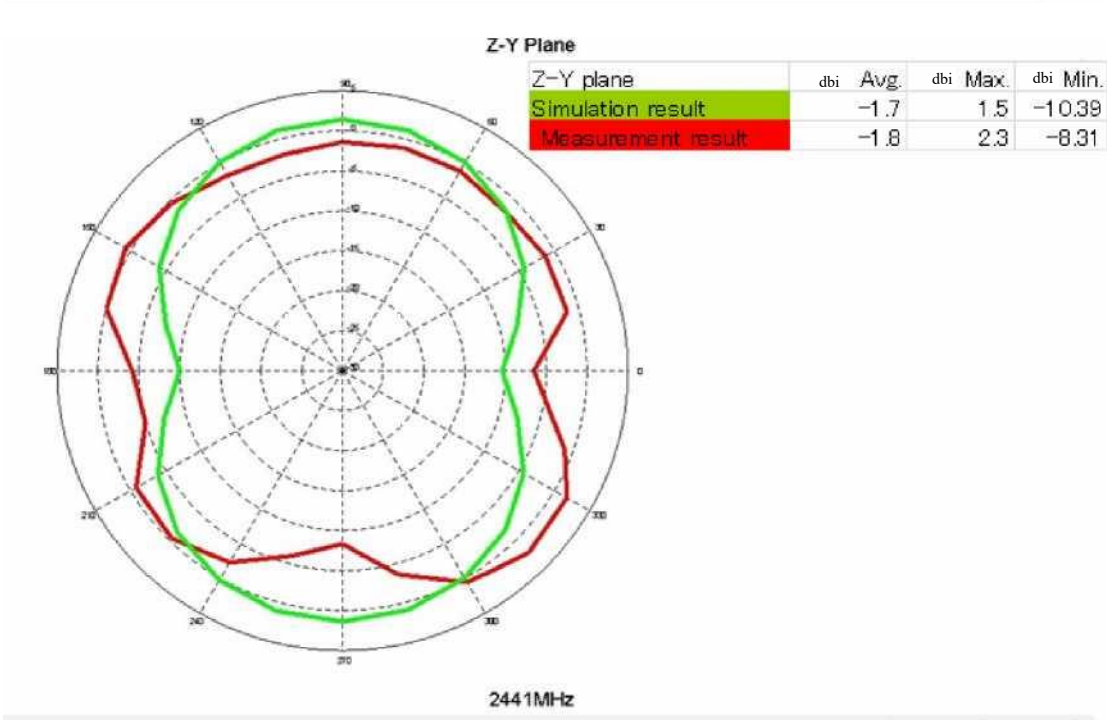
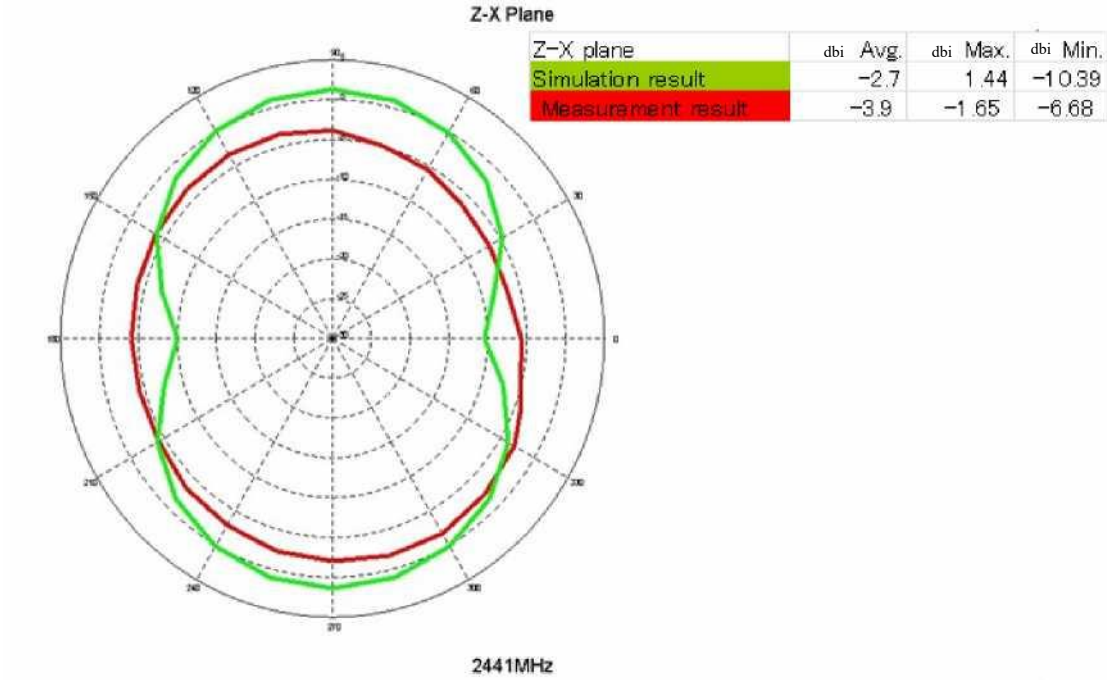
X-Y Plane

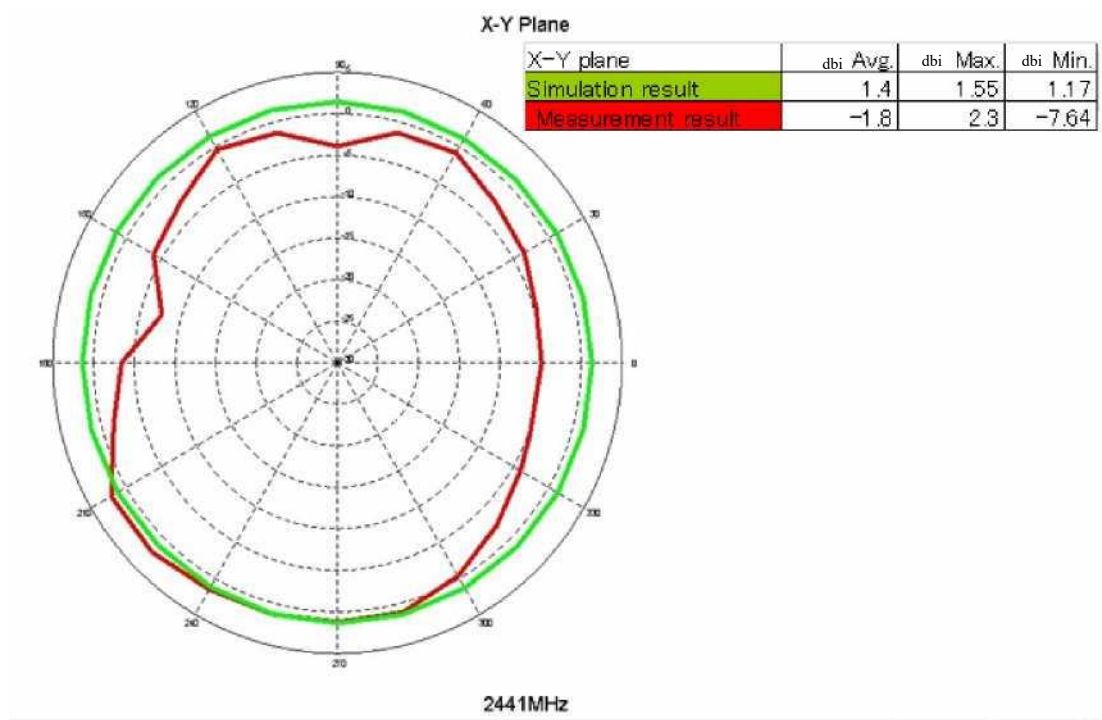


2402MHz

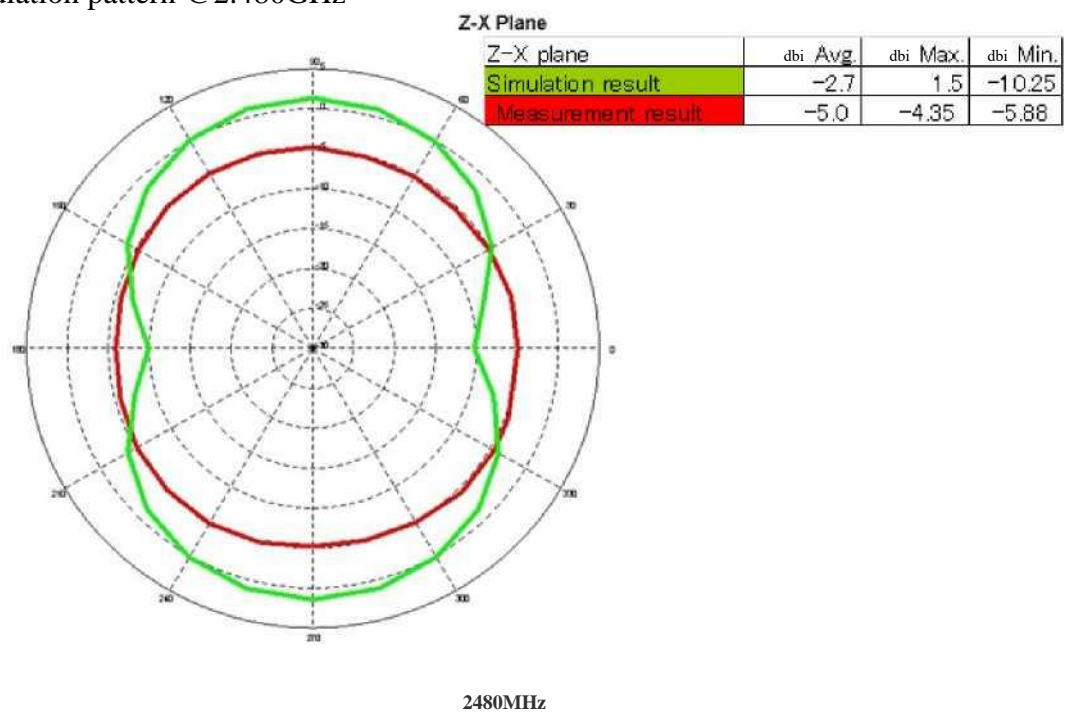
X-Y plane	dBi Avg.	dBi Max.	dBi Min.
Simulation result	1.3	1.5	1.15
Measurement result	-2.3	1.7	-7.34

Radiation pattern @2.441GHz

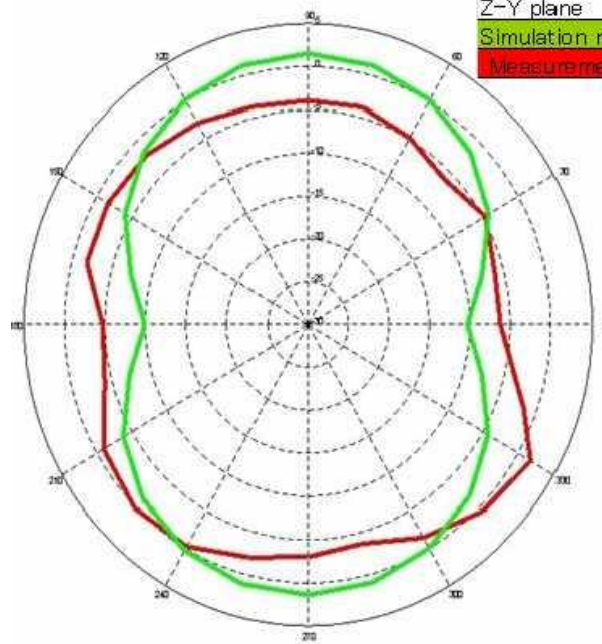




Radiation pattern @2.480GHz



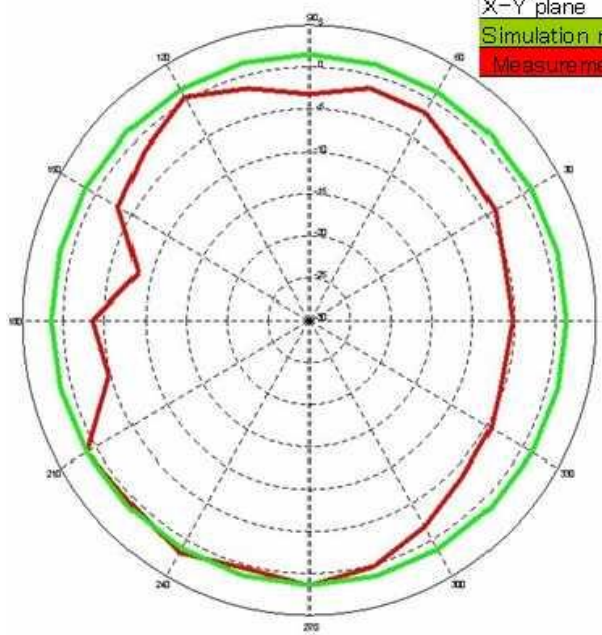
# Z-Y Plane



Z-Y plane	dBi Avg.	dBi Max.	dBi Min.
Simulation result	-2.7	1.55	-10.25
Measurement result	-2.8	1.82	-6.16

2480MHz

# X-Y Plane



X-Y plane	dBi Avg.	dBi Max.	dBi Min.
Simulation result	1.4	1.61	1.22
Measurement result	-2.3	1.82	-8.38

2480MHz