

EXHIBIT 9

INTERNAL PHOTOGRAPHS

(Pursuant to FCC Part 2.1033(b)(7), 2.1033(c)(12) and RSP 100 Sec 8.3)

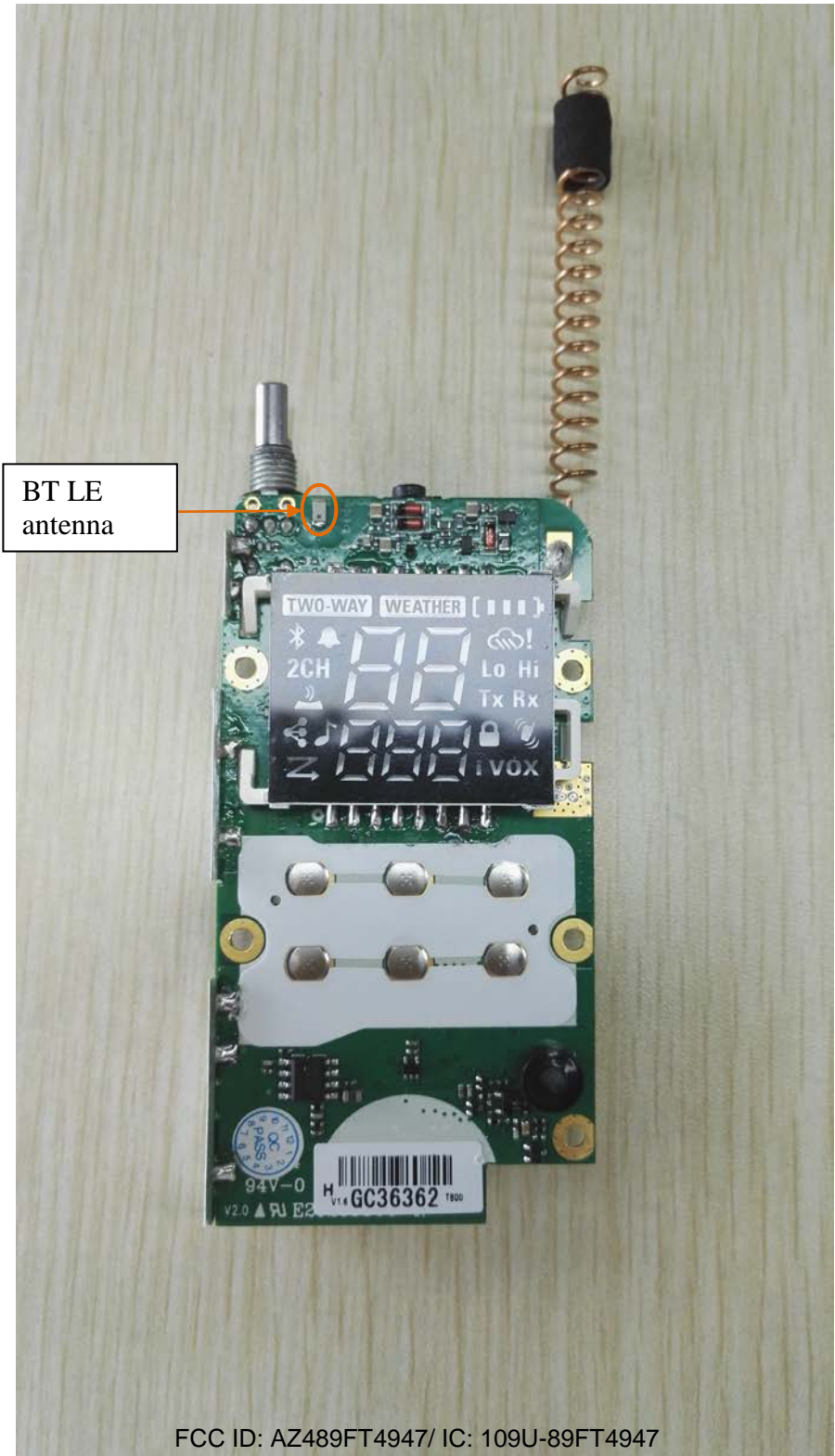
The following photographs are attached.

Exhibit

- | | | |
|----|---|----|
| 1. | RF board <u>with</u> Shields (Top). | 9A |
| 2. | RF board <u>without</u> Shields (Top). | 9B |
| 3. | RF board <u>with</u> Shields (Bottom). | 9C |
| 4. | RF board <u>without</u> Shields (Bottom). | 9D |
| 5. | RF board with chassis and housing (front side). | 9E |
| 6. | RF Board with chassis and housing (back side). | 9F |
| 7. | Exploded View of Radio | 9G |

EXHIBIT 9A - RF board with Shields (Top)

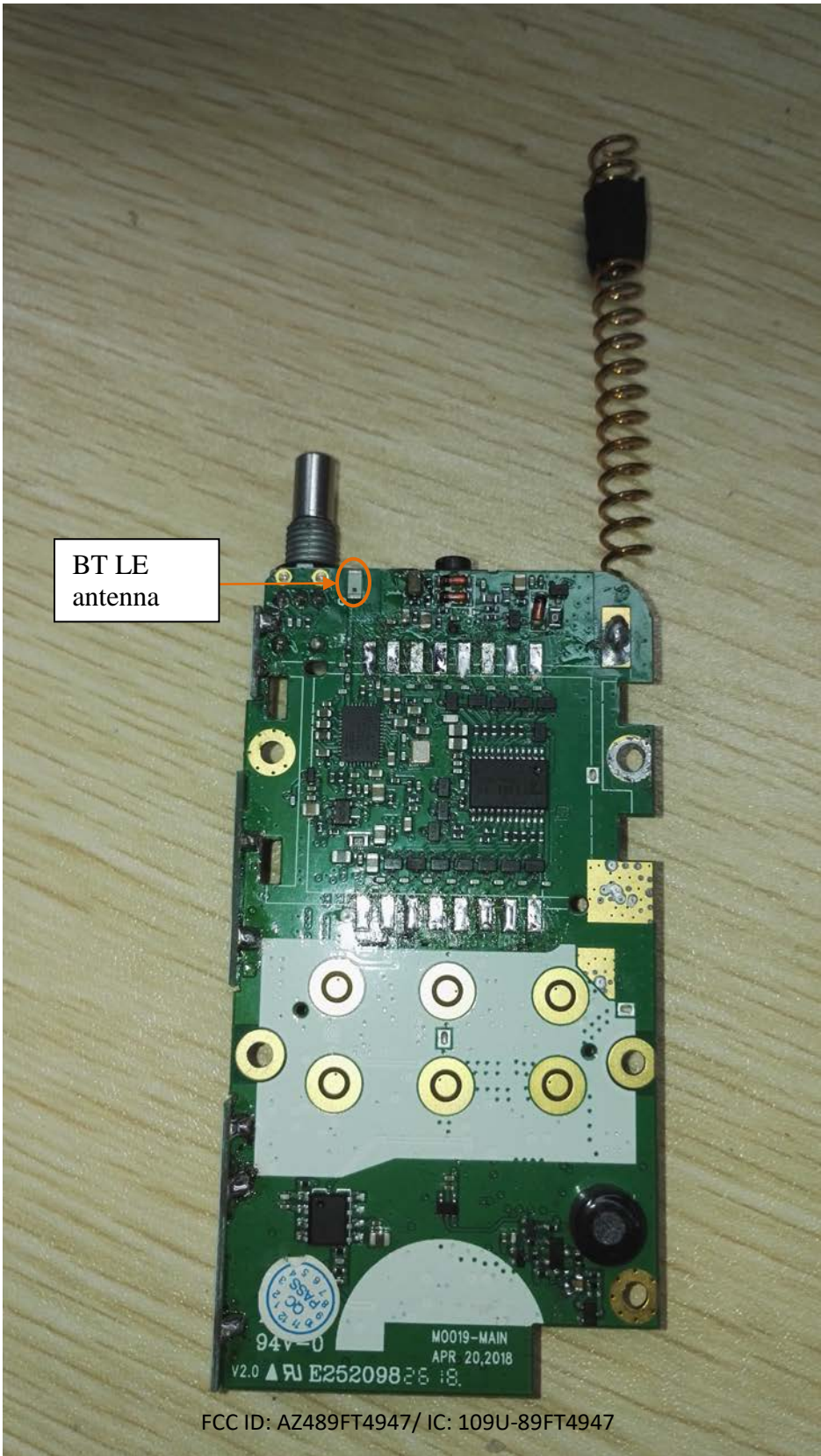
T800/T801



FCC ID: AZ489FT4947/ IC: 109U-89FT4947

EXHIBIT 9B - RF board without Shields (Top)

T800/T801



FCC ID: AZ489FT4947/ IC: 109U-89FT4947

EXHIBIT 9C - RF board with Shields (Bottom)

T800/T801



EXHIBIT 9D - RF board without Shields (Bottom)

T800/T801

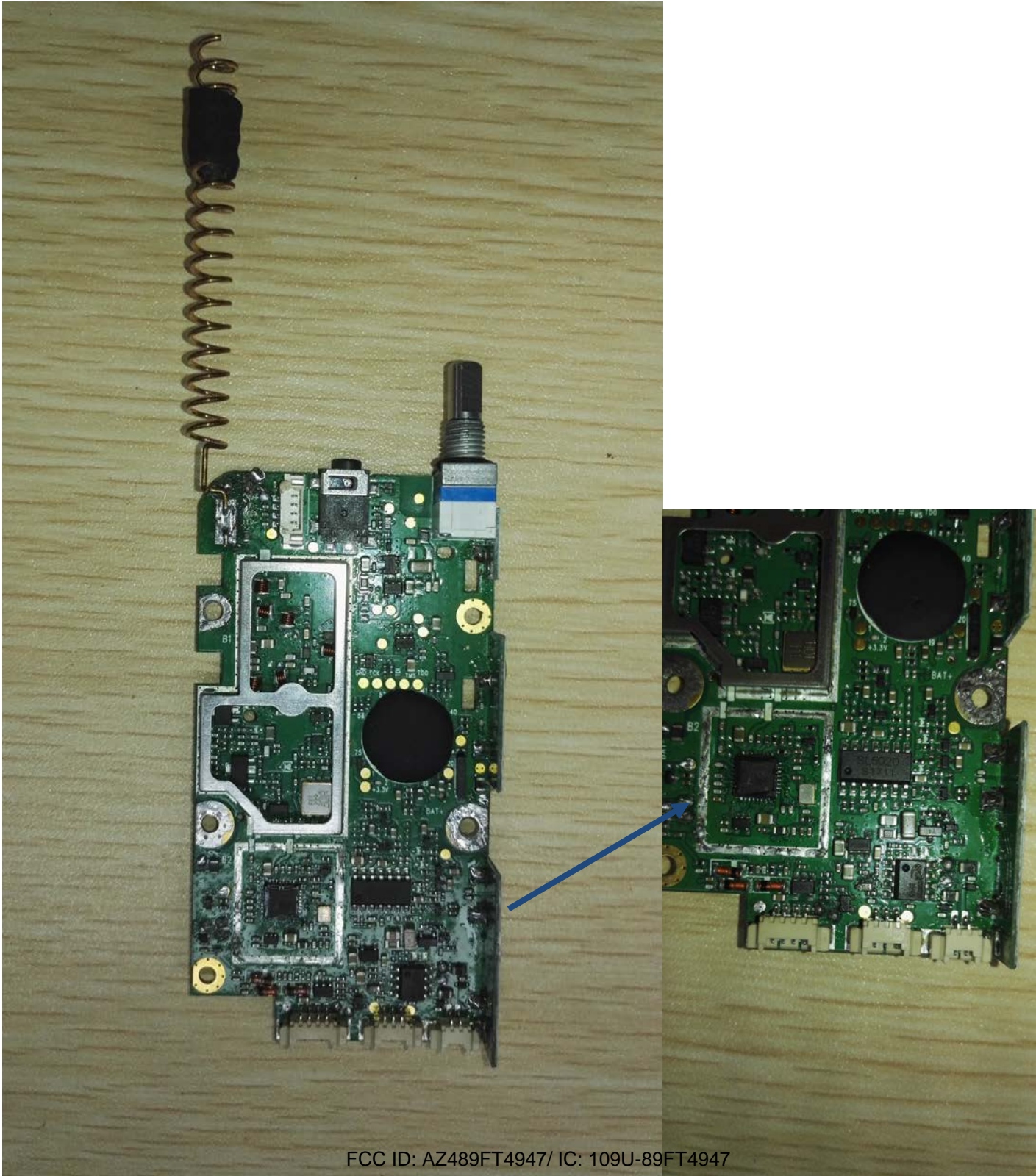


EXHIBIT 9E - RF board with chassis and housing (front side)

T800/T801

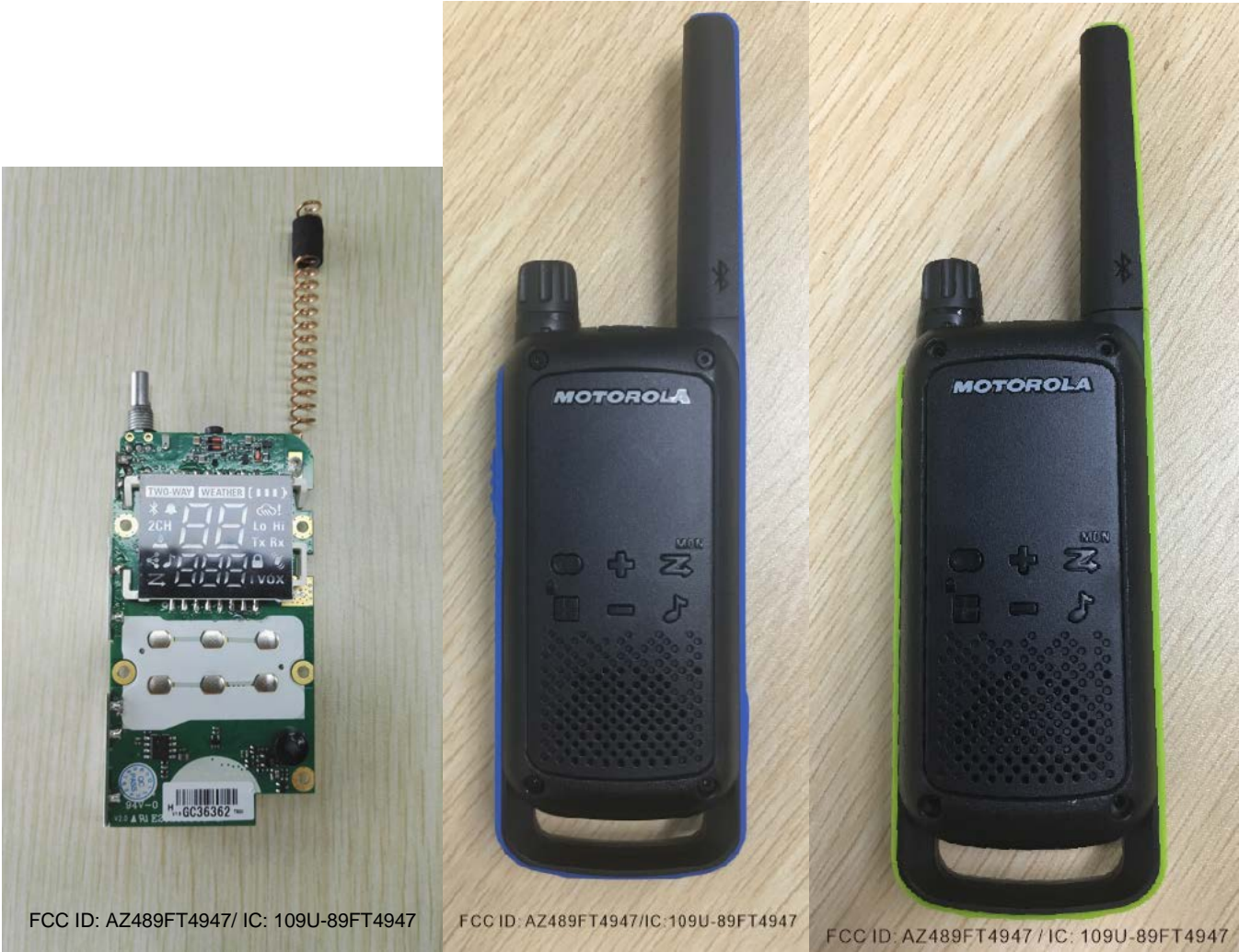


EXHIBIT 9F - Chassis and Housing (back side)

T800



T801



EXHIBIT 9G – Exploded View of Radio

