

EXHIBIT 9**INTERNAL PHOTOGRAPHS**

The following photographs are attached.

Exhibit

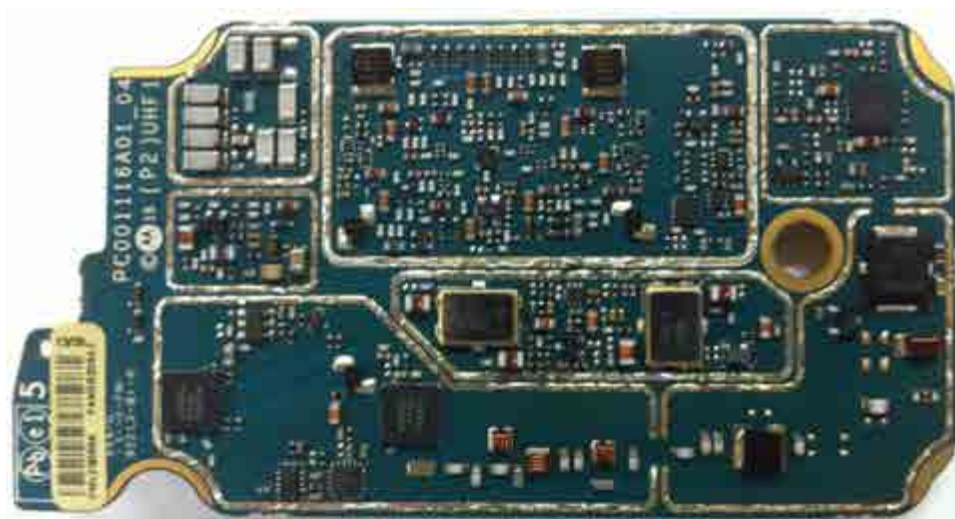
1. RF board <u>with</u> Shields (Top) (APX6000/APX5000/APX6000XE/APX6000Li).	9A
2. RF board <u>without</u> Shields (Top) (APX6000/APX5000/APX6000XE/APX6000Li).	9B
3. RF board <u>with</u> Shields (Bottom) (APX6000/APX5000/APX6000XE/APX6000Li)..	9C
4. RF board <u>without</u> Shields (Bottom) (APX6000/APX5000/APX6000XE/APX6000Li).	9D
5. Expansion board <u>with</u> shields (Top) (APX6000/APX5000/APX6000XE/APX6000Li).	9E
6. Expansion board <u>without</u> shields (Top) (APX6000/APX5000/APX6000XE/APX6000Li).	9F
7. Expansion board <u>with</u> shields (Bottom) (APX6000/APX5000/APX6000XE/APX6000Li).	9G
8. Expansion board <u>without</u> shields (Bottom) (APX6000/APX5000/APX6000XE/APX6000Li).	9H
9. Vocon board <u>with</u> shields (Top) (APX6000/APX5000/APX6000XE/APX6000Li).	9I
10. Vocon board <u>without</u> shields (Top) (APX6000/APX5000/APX6000XE/APX6000Li).	9J
11. Vocon board <u>with</u> shields (Bottom) (APX6000/APX5000/APX6000XE/APX6000Li).	9K
12. Vocon board <u>without</u> shields (Bottom) (APX6000/APX5000/APX6000XE/APX6000Li).	9L
13. RF and Vocon boards <u>with</u> chassis and housing (APX6000/APX6000Li/APX5000 Model 1.5) (Front side)	9M
14. Expansion board <u>with</u> chassis and housing (APX6000/APX6000Li/APX5000 Model 1.5) (Back side)	9N
15. RF and Vocon boards <u>with</u> chassis and housing (APX6000/APX6000Li/APX5000 Model 2.5) (Front side)	9O
16. Expansion board <u>with</u> chassis and housing (APX6000/APX6000Li/APX5000 Model 2.5) (Back side)	9P
17. RF and Vocon boards <u>with</u> chassis and housing (APX6000/ APX6000Li /APX5000 Model 3.5) (Front side)	9Q
18. Expansion board <u>with</u> chassis and housing (APX6000/ APX6000Li /APX5000 Model 3.5) (Back side)	9R
19. RF and Vocon boards <u>with</u> chassis and housing of APX6000XE Model 1.5 (Front side)	9S
20. Expansion board <u>with</u> chassis and housing of APX6000XE Model 1.5 (Back side)	9T
21. RF and Vocon boards <u>with</u> chassis and housing of APX6000XE Model 2.5 (Front side)	9U
22. Expansion board <u>with</u> chassis and housing of APX6000XE Model 2.5 (Back side)	9V
23. RF and Vocon boards <u>with</u> chassis and housing of APX6000XE Model 3.5 (Front side)	9W
24. Expansion board <u>with</u> chassis and housing of APX6000XE Model 3.5 (Back side)	9X
25. Exploded view of APX6000/ APX6000Li/APX5000 Model 1.5 radio	9Y
26. Exploded view of APX6000/ APX6000Li/APX5000 Model 2.5 radio	9Z
27. Exploded view of APX6000/ APX6000Li/APX5000 Model 3.5 radio	9AA
28. Exploded view of APX6000XE Model 1.5 radio	9AB
29. Exploded view of APX6000XE Model 2.5 radio	9AC
30. Exploded view of APX6000XE Model 3.5 radio	9AD

Exhibits 9A



RF board with Shields (Top)
(APX6000/APX5000/APX6000XE/APX6000Li)

Exhibit 9B



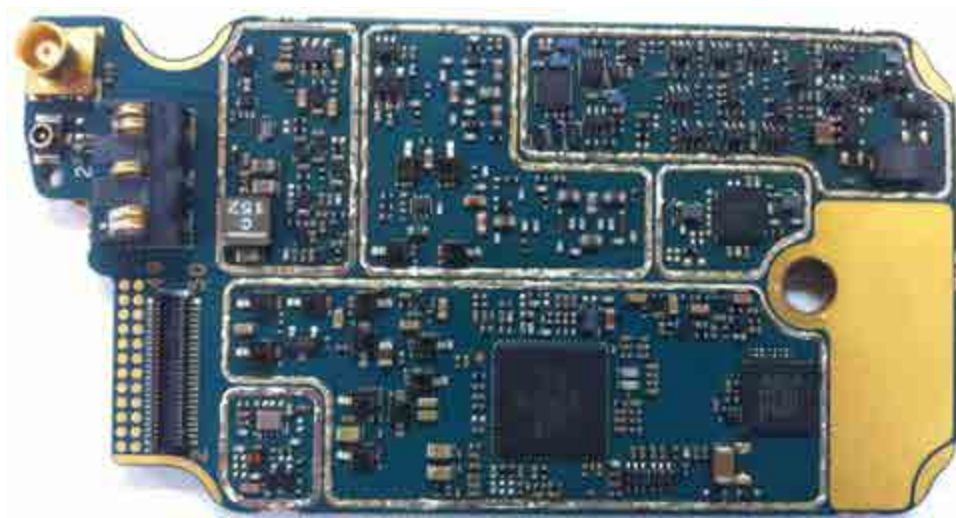
RF board without Shields (Top)
(APX6000/APX5000/APX6000XE/APX6000Li)

Exhibit 9C



RF board with Shields (Bottom)
(APX6000/APX5000/APX6000XE/APX6000Li)

Exhibit 9D



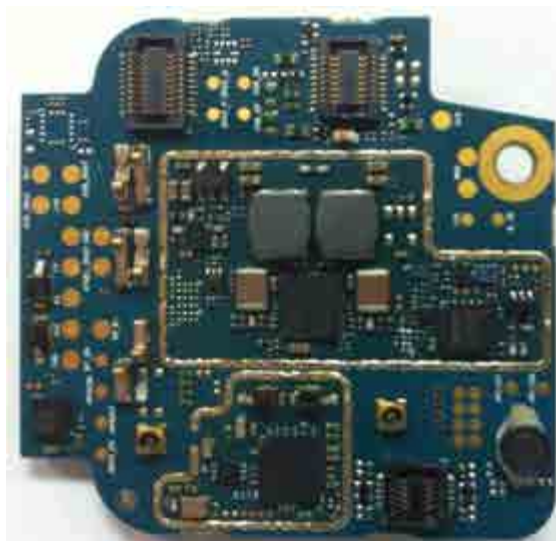
RF board without Shields (Bottom)
(APX6000/APX5000/APX6000XE/APX6000Li)

Exhibit 9E



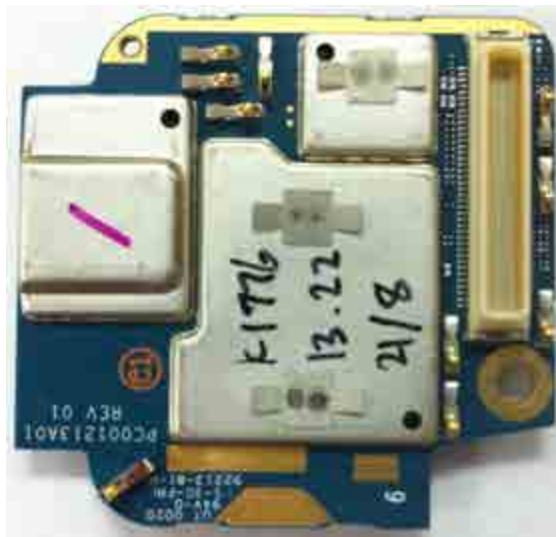
Expansion board with shields (Top)
(APX6000/APX5000/APX6000XE/APX6000Li)

Exhibit 9F



Expansion board without shields (Top)
(APX6000/APX5000/APX6000XE/APX6000Li)

Exhibit 9G



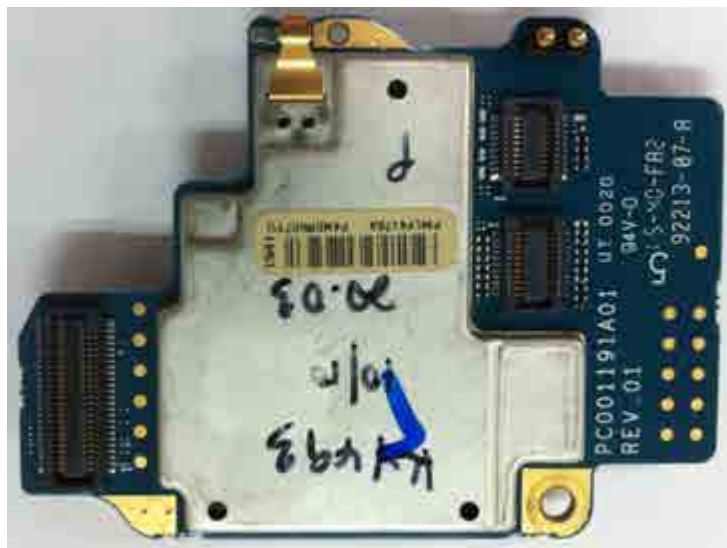
Expansion board with shields (Bottom)
(APX6000/APX5000/APX6000XE/APX6000Li)

Exhibit 9H



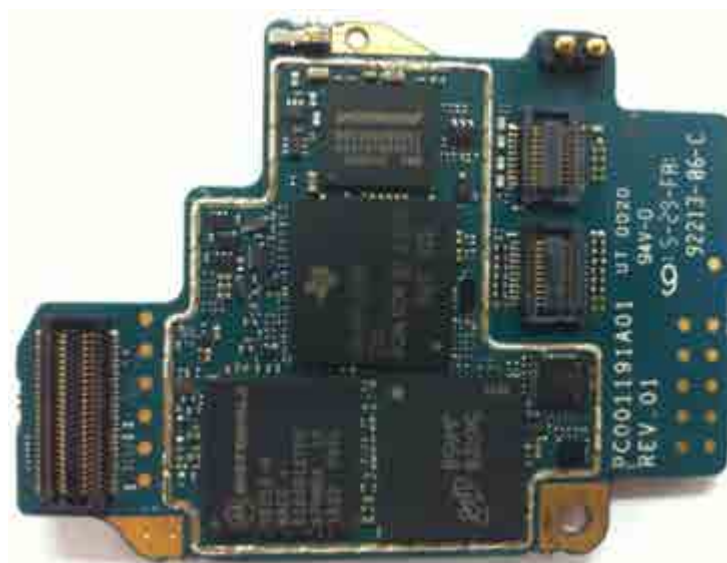
Expansion board without shields (Bottom)
(APX6000/APX5000/APX6000XE/APX6000Li)

Exhibit 9I



Vocon board with shields (Top)
(APX6000/APX5000/APX6000XE/APX6000Li)

Exhibit 9J



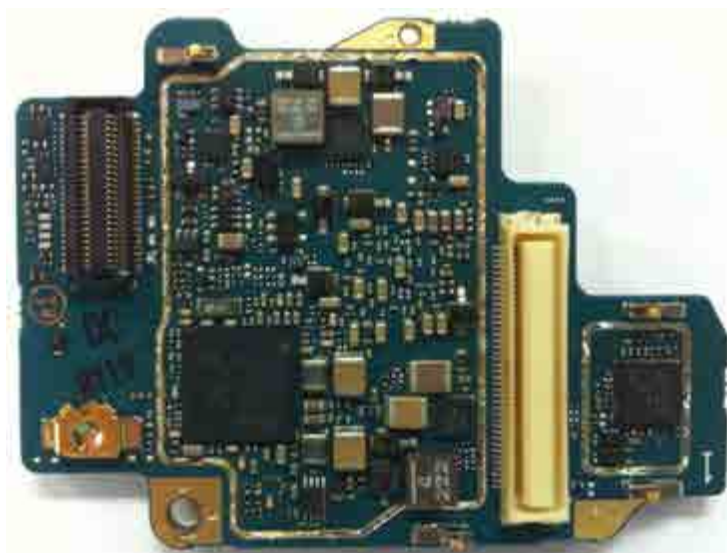
Vocon board without shields (Top)
(APX6000/APX5000/APX6000XE/APX6000Li)

Exhibit 9K



Vocon board with shields (Bottom)
(APX6000/APX5000/APX6000XE/APX6000Li)

Exhibit 9L



Vocon board without shields (Bottom)
(APX6000/APX5000/APX6000XE/APX6000Li)

Exhibit 9M



RF and Vocon boards with chassis and housing (APX6000/ APX6000Li/APX5000 Model 1.5) (Front side)

Exhibit 9N



Expansion board with chassis and housing (APX6000/ APX6000Li/APX5000 Model 1.5) (Back side)

Exhibit 90

RF and Vocon boards with chassis and housing (APX6000/ APX6000Li/APX5000 Model 2.5) (Front side)

Exhibit 9P



Expansion board with chassis and housing (APX6000/ APX6000Li/APX5000 Model 2.5) (Back side)

Exhibit 9Q



RF and Vocon boards with chassis and housing (APX6000/ APX6000Li/APX5000 Model 3.5) (Front side)

Exhibit 9R



Expansion board with chassis and housing (APX6000/ APX6000Li/APX5000 Model 3.5) (Back side)

Exhibit 9S



RF and Vocon boards with chassis and housing of APX6000XE Model 1.5 (Front side)

Exhibit 9T



Expansion board with chassis and housing of APX6000XE Model 1.5 (Back side)

Exhibit 9U



RF and Vocon boards with chassis and housing of APX6000XE Model 2.5 (Front side)

Exhibit 9V



Expansion board with chassis and housing of APX6000XE Model 2.5 (Back side)

The image shows a yellow Motorola radio on the left and its internal components on the right. The radio has a black screen and a keypad. The internal components include a battery, a circuit board, and a speaker. Handwritten text on the battery reads "Ky 146 20/2/16 10-03 am". Handwritten text on the circuit board reads "N22V 11-18 14/2".

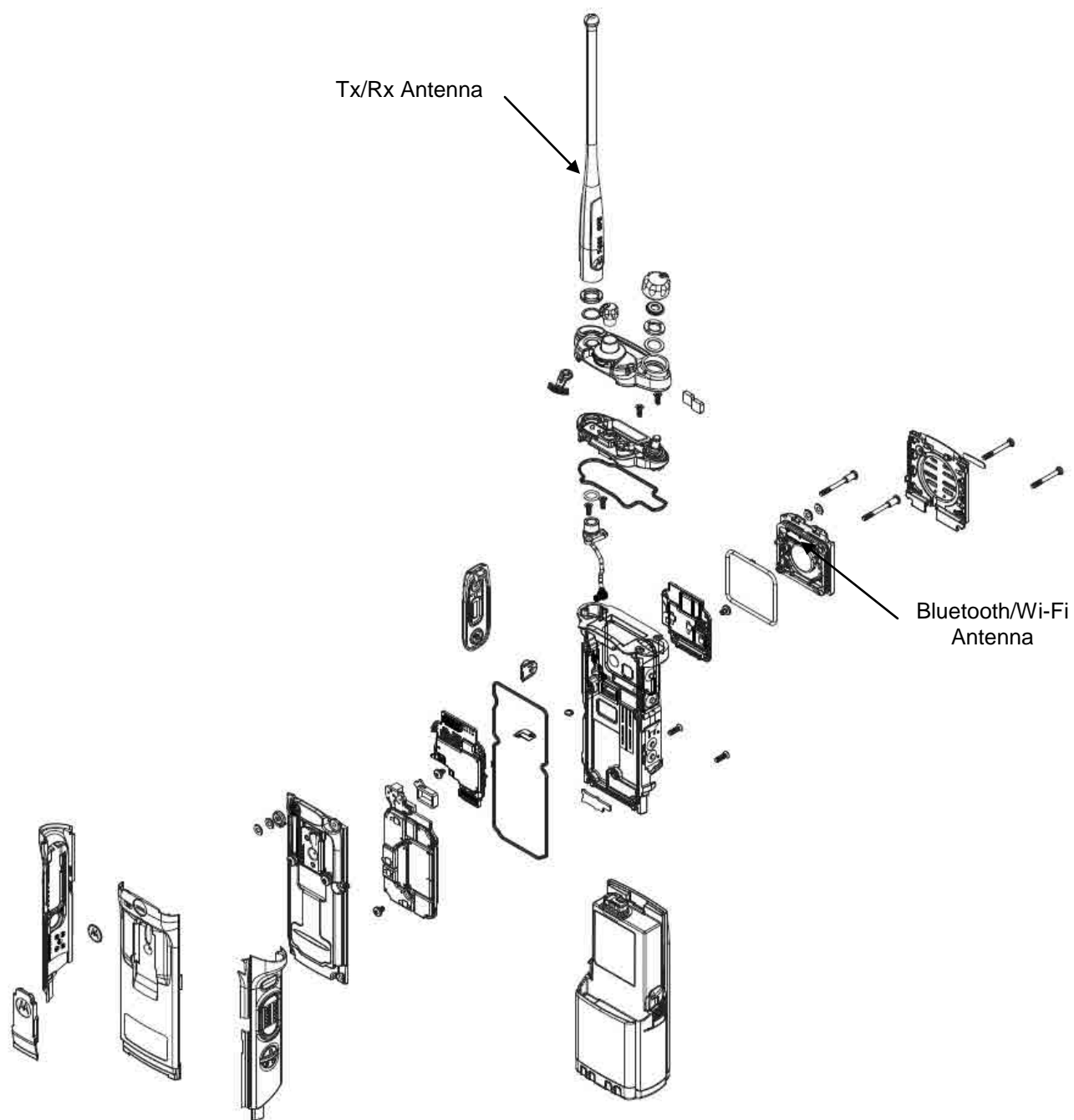
EXHIBIT 9
SHEET 18 OF 25

Exhibit 9X



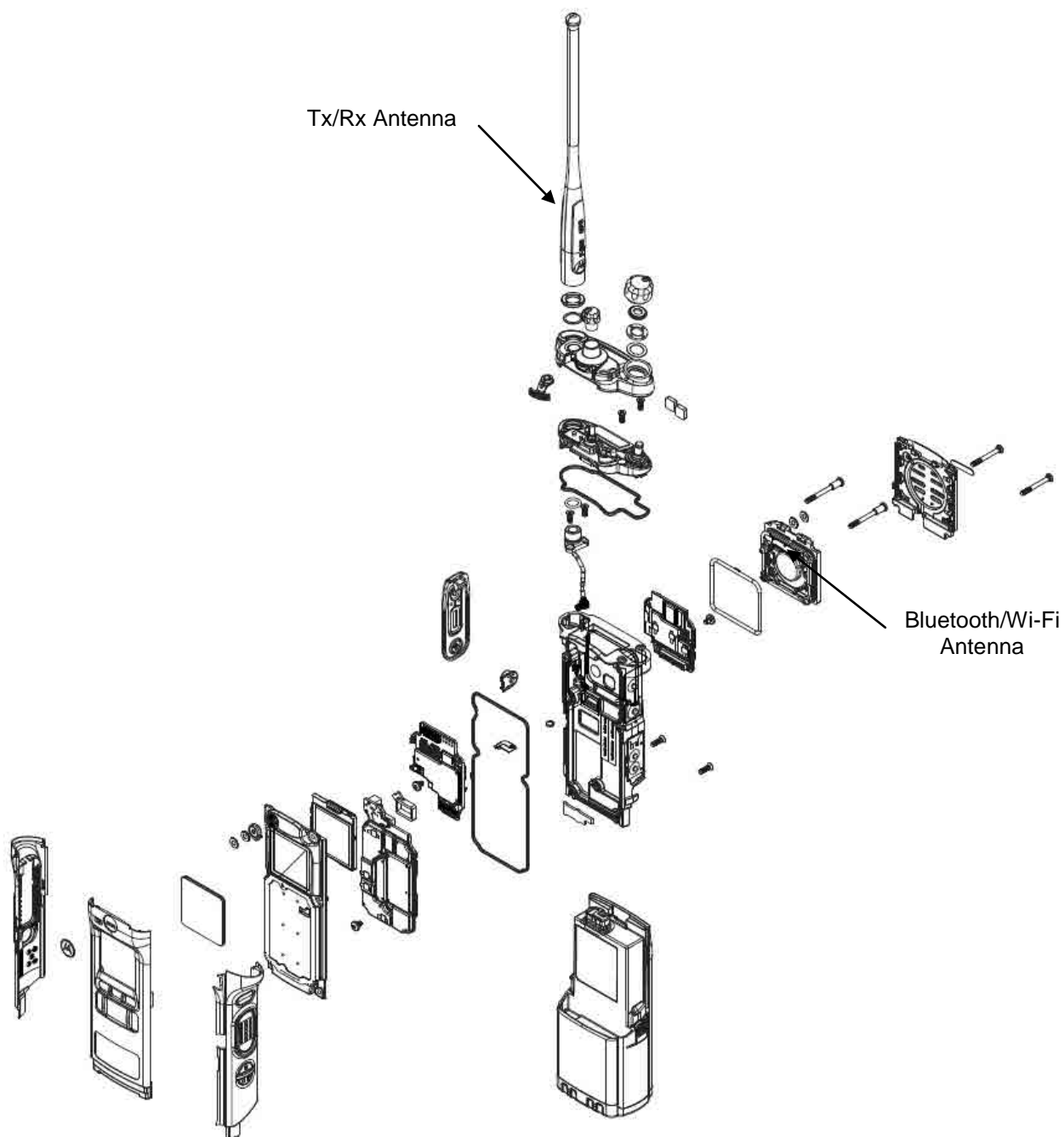
Expansion board with chassis and housing of APX6000XE Model 3.5 (Back side)

Exhibit 9Y



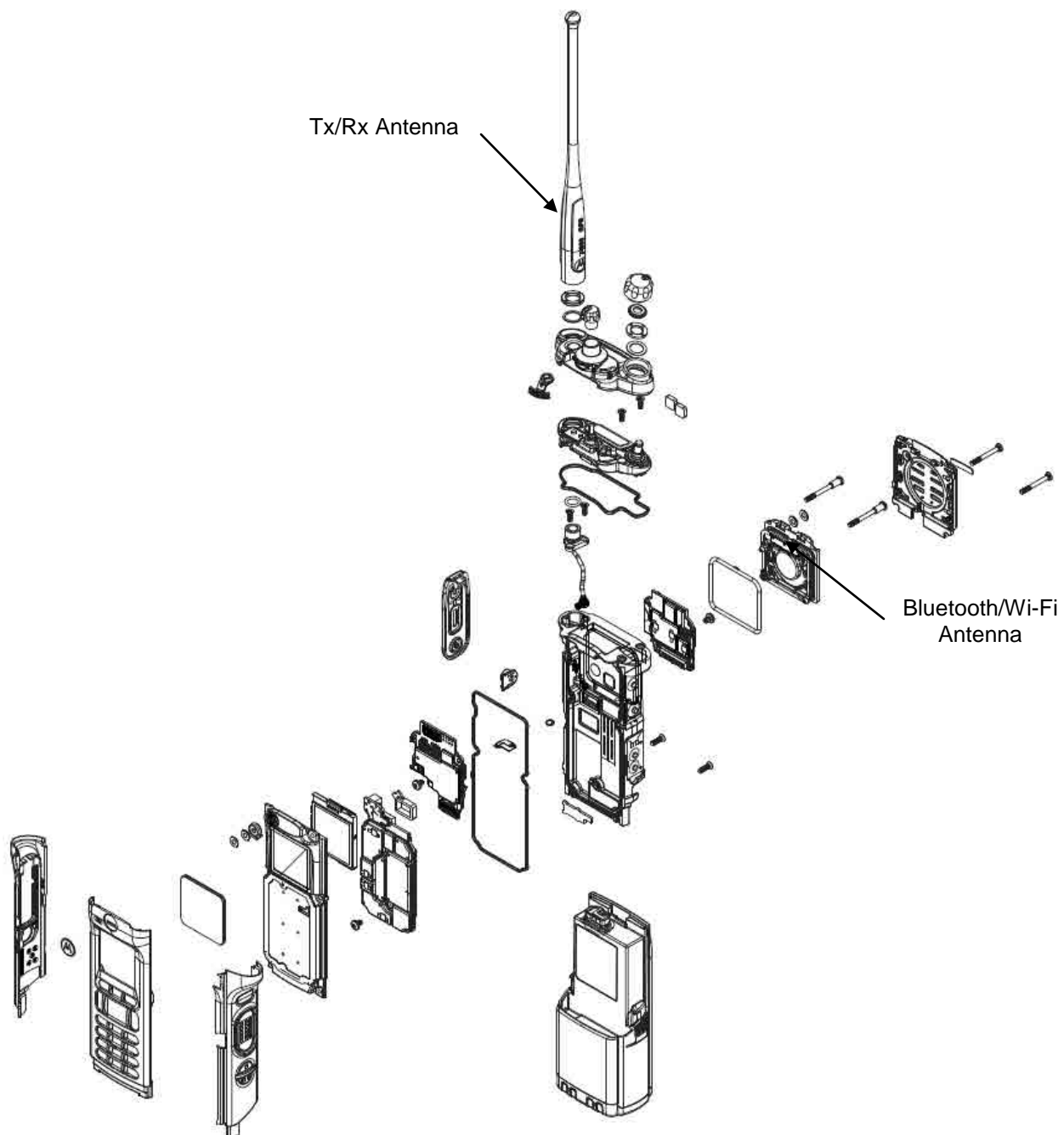
Exploded view of APX6000/ APX6000Li/APX5000 Model 1.5 radio

Exhibit 9Z



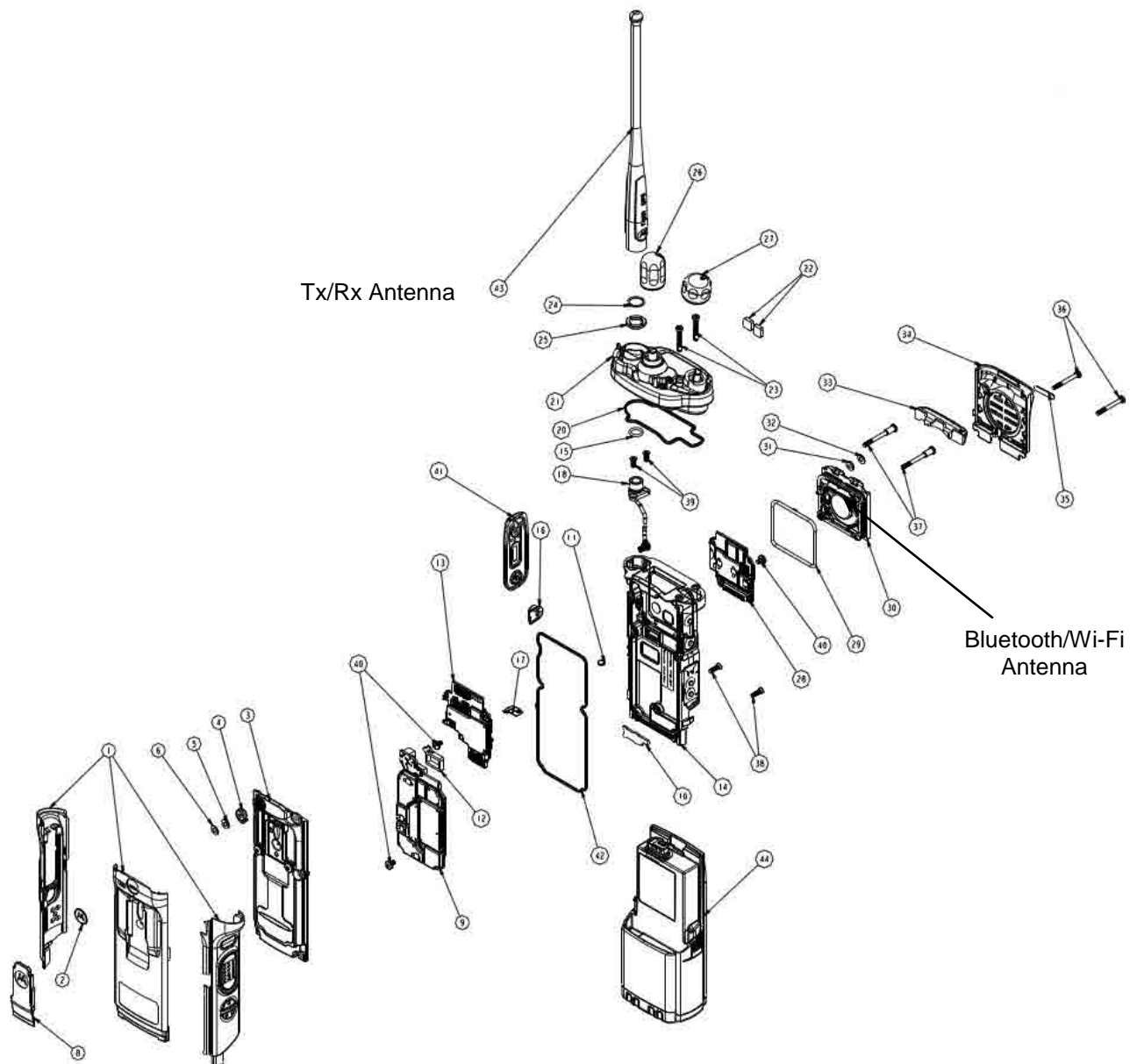
Exploded view of APX6000/ APX6000Li/APX5000 Model 2.5 radio

Exhibit 9AA



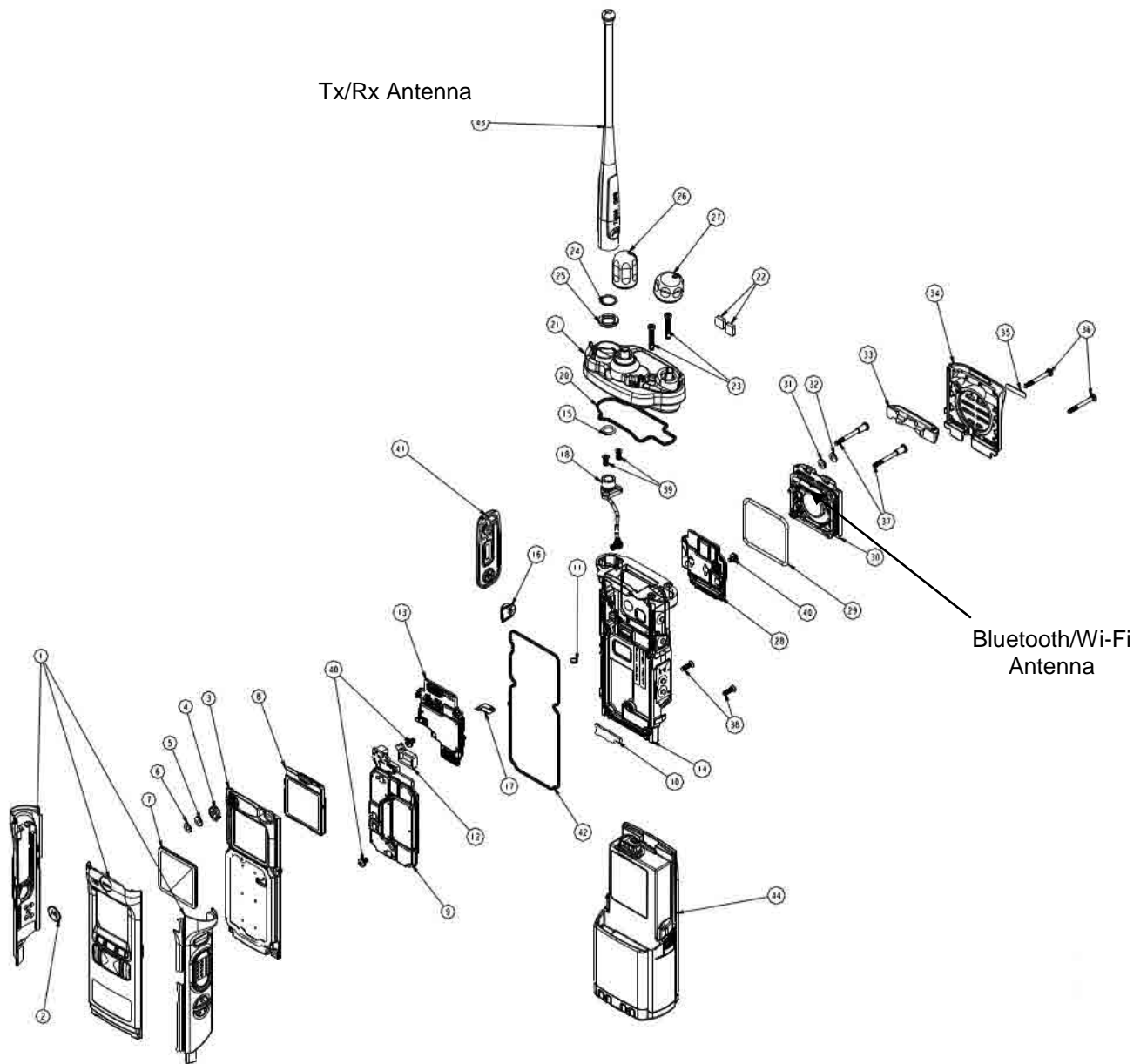
Exploded view of APX6000/ APX6000Li/APX5000 Model 3.5 radio

Exhibit 9AB



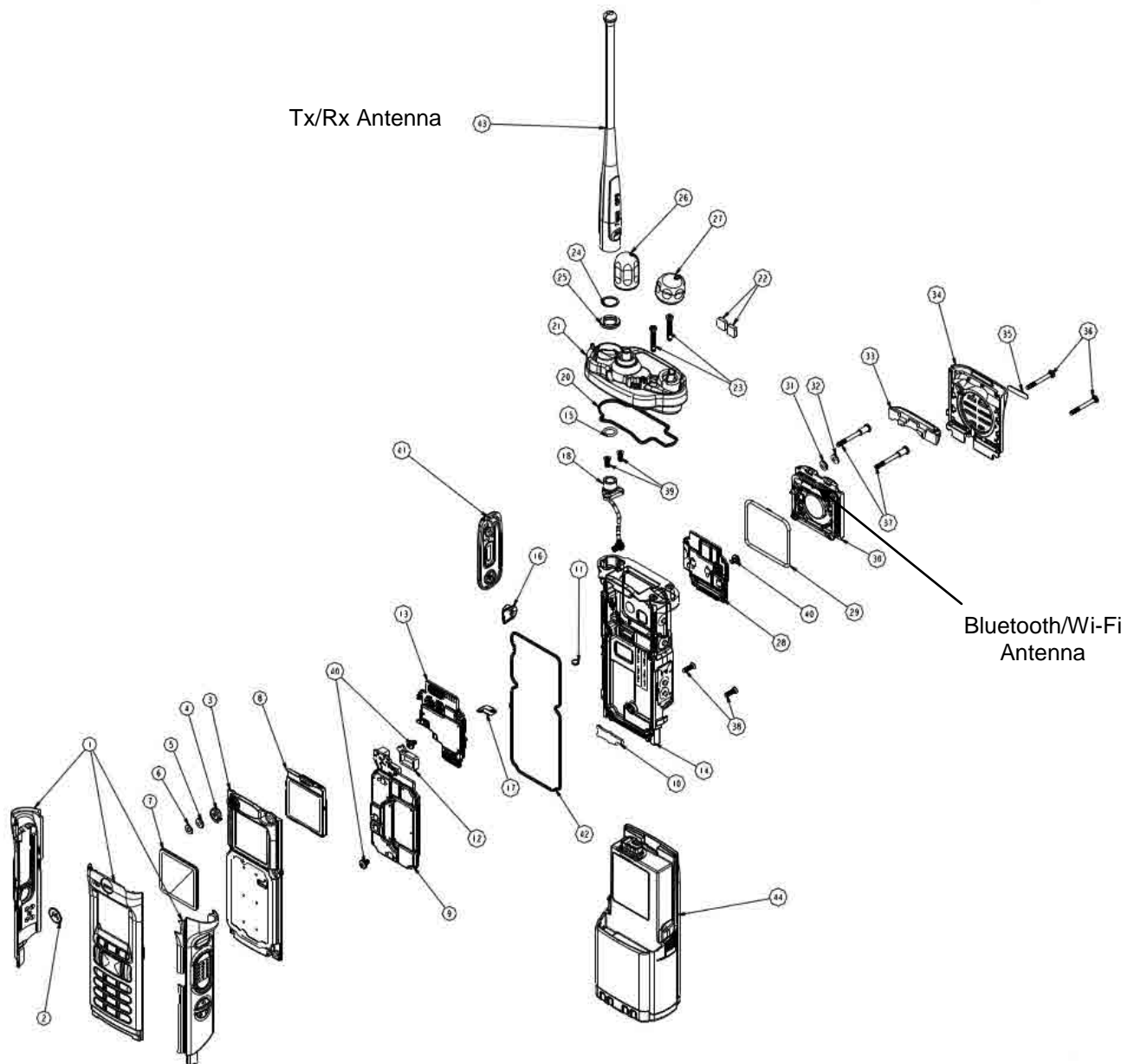
Exploded view of APX6000XE Model 1.5 radio

Exhibit 9AC



Exploded view of APX6000XE Model 2.5 radio

Exhibit 9AD



Exploded view of APX6000XE Model 3.5 radio