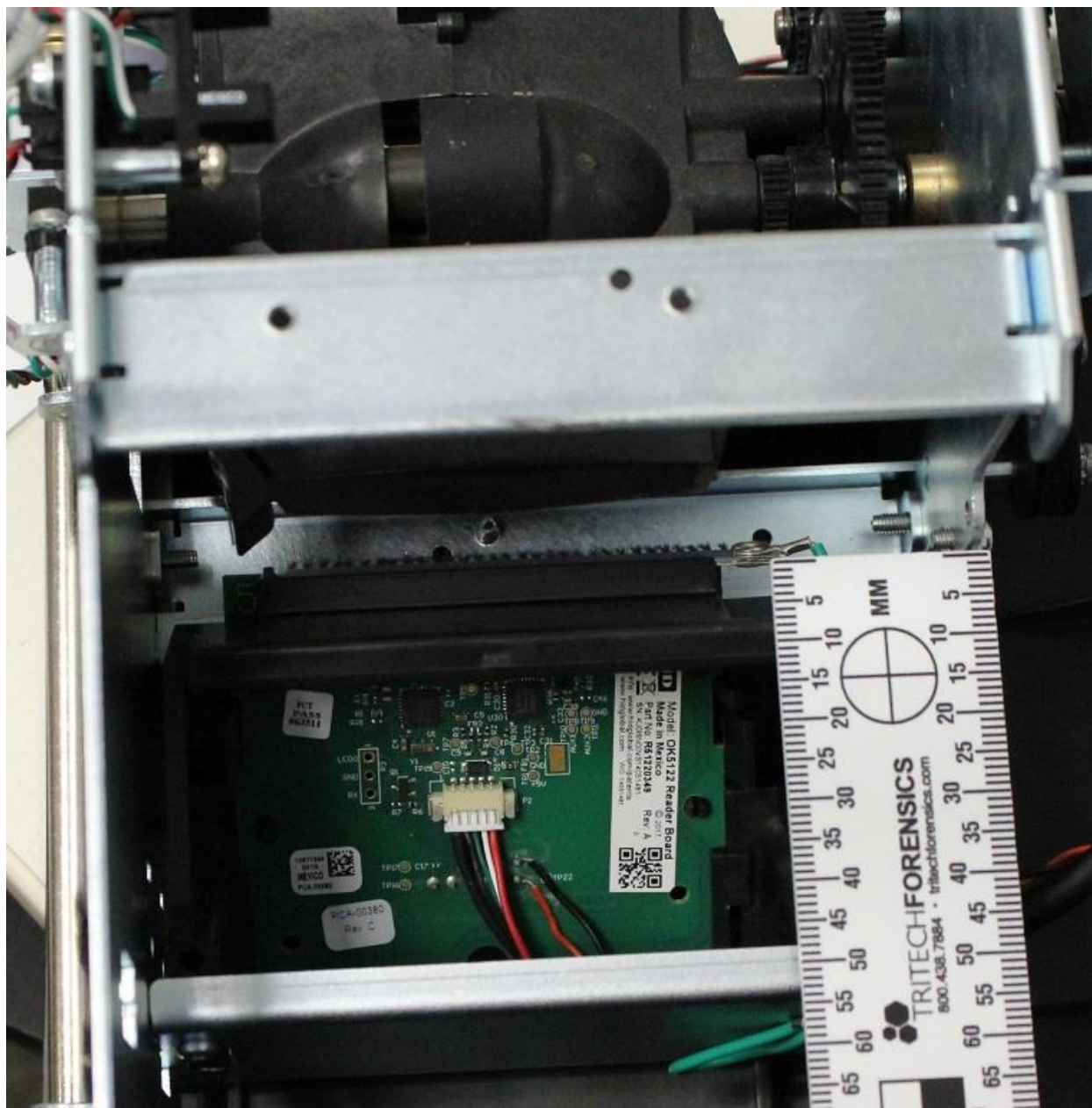
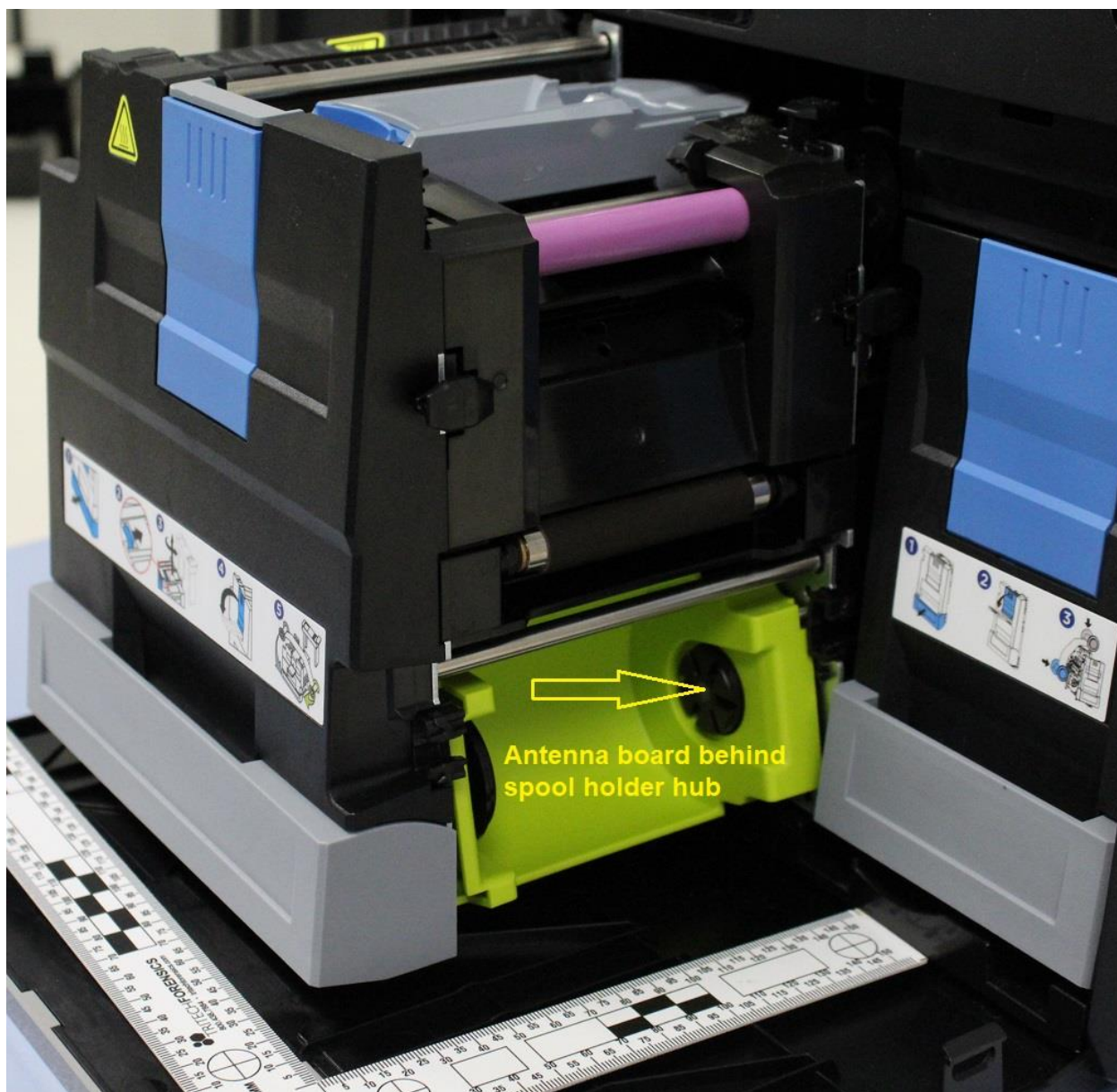


Photograph 1. Card encoder located next to card flipper



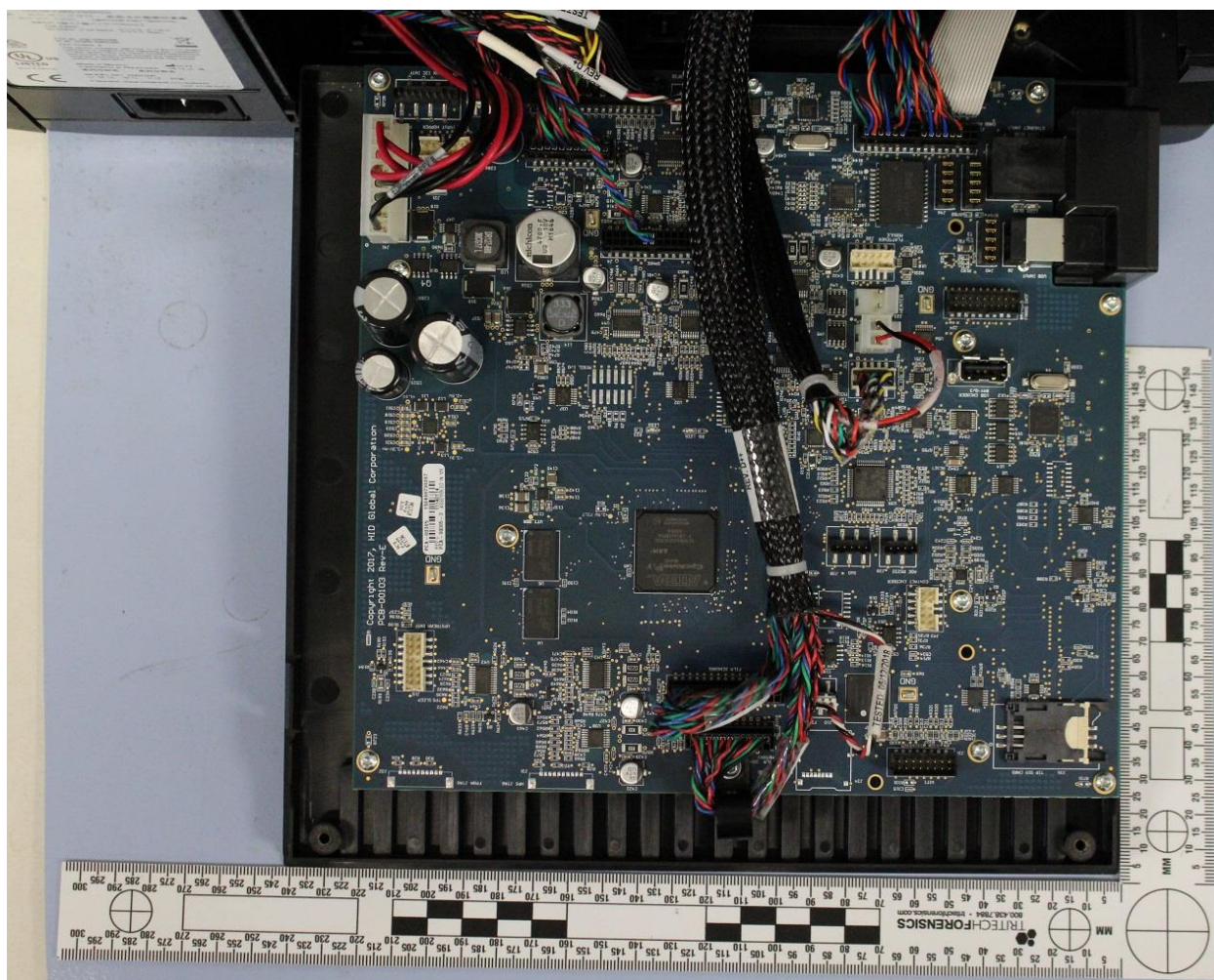
Photograph 2. Card encoder radio in card flipper module



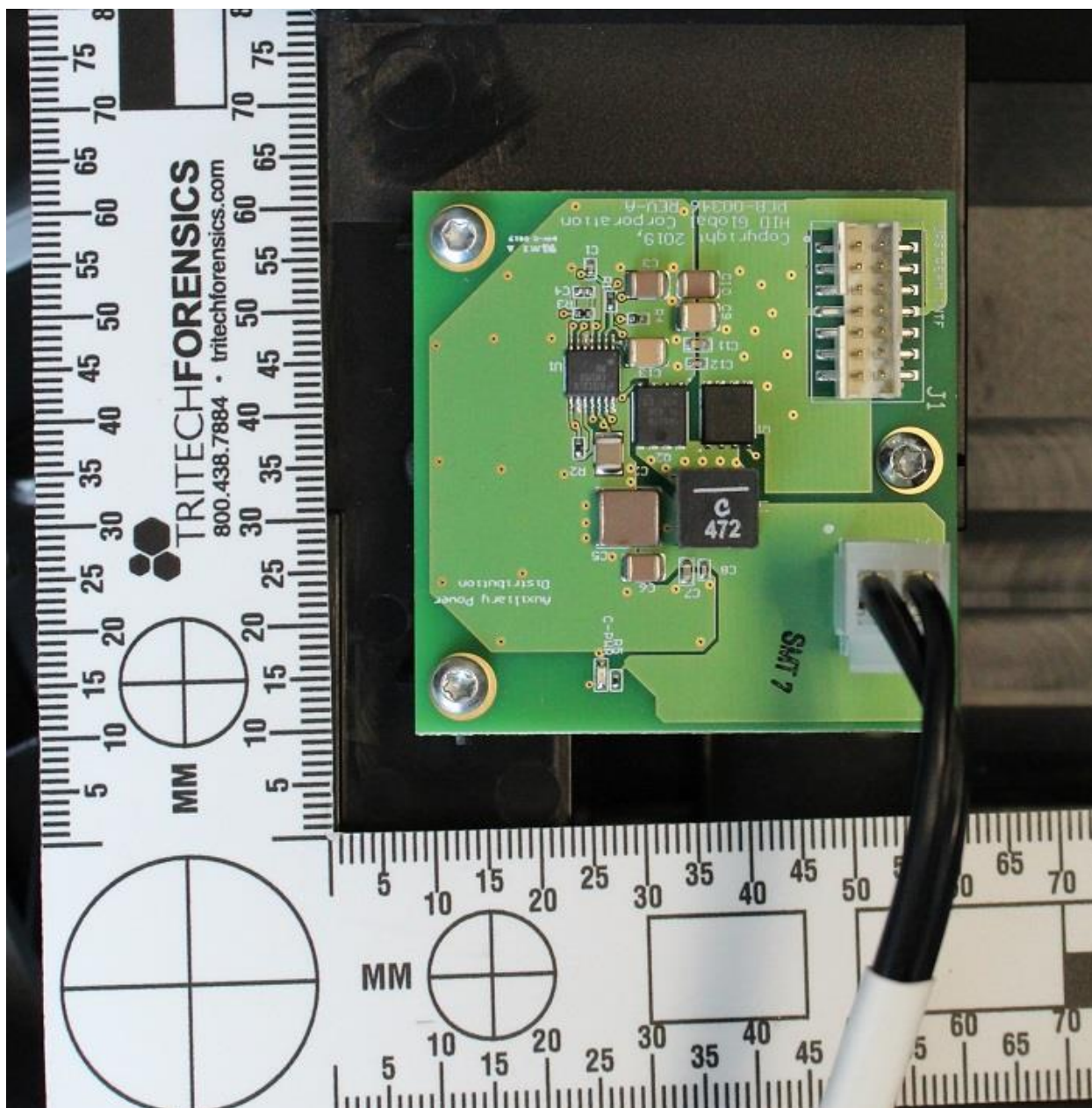
Photograph 3. Film spool antenna location



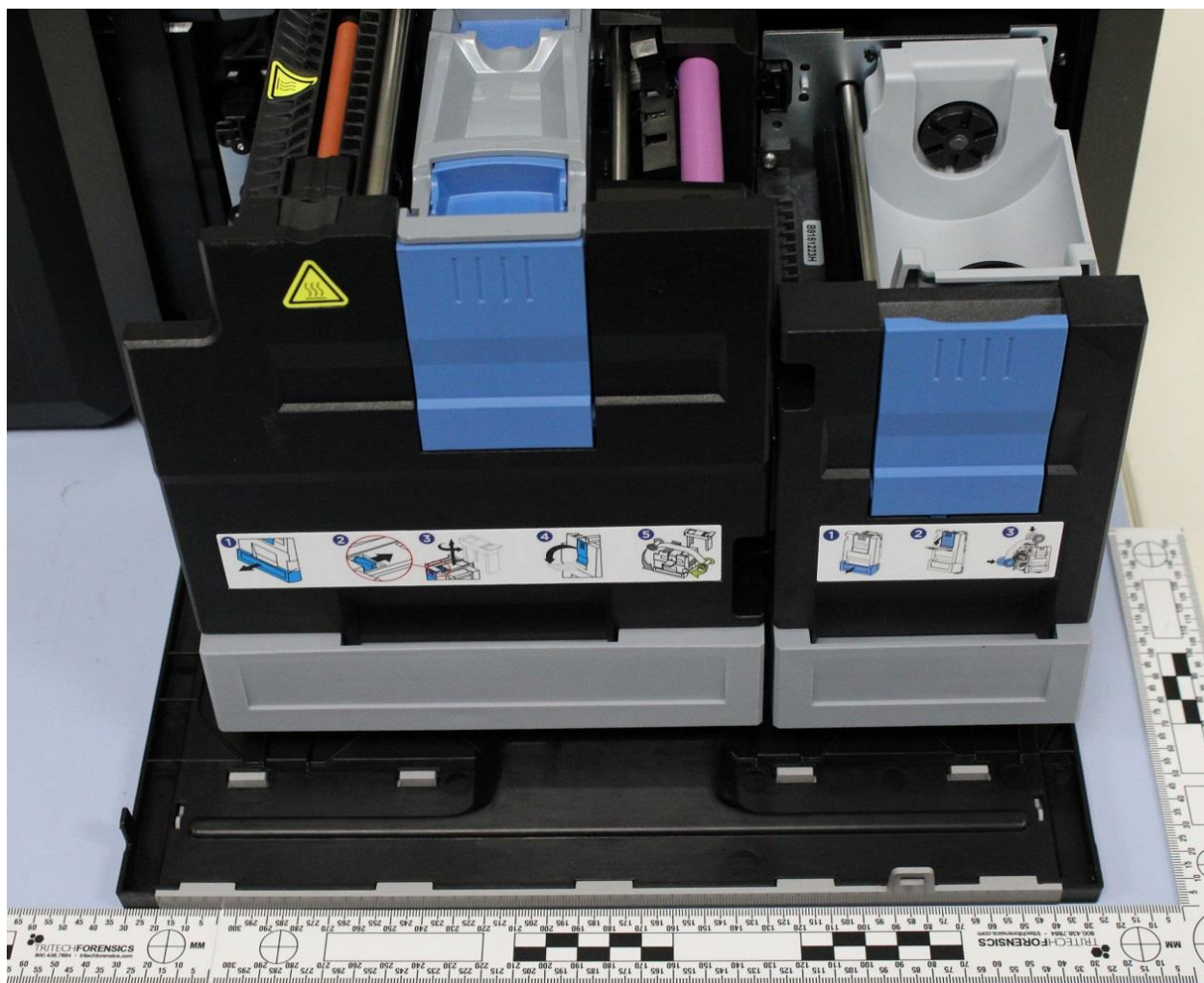
Photograph 4. Front door open and flipper module door open



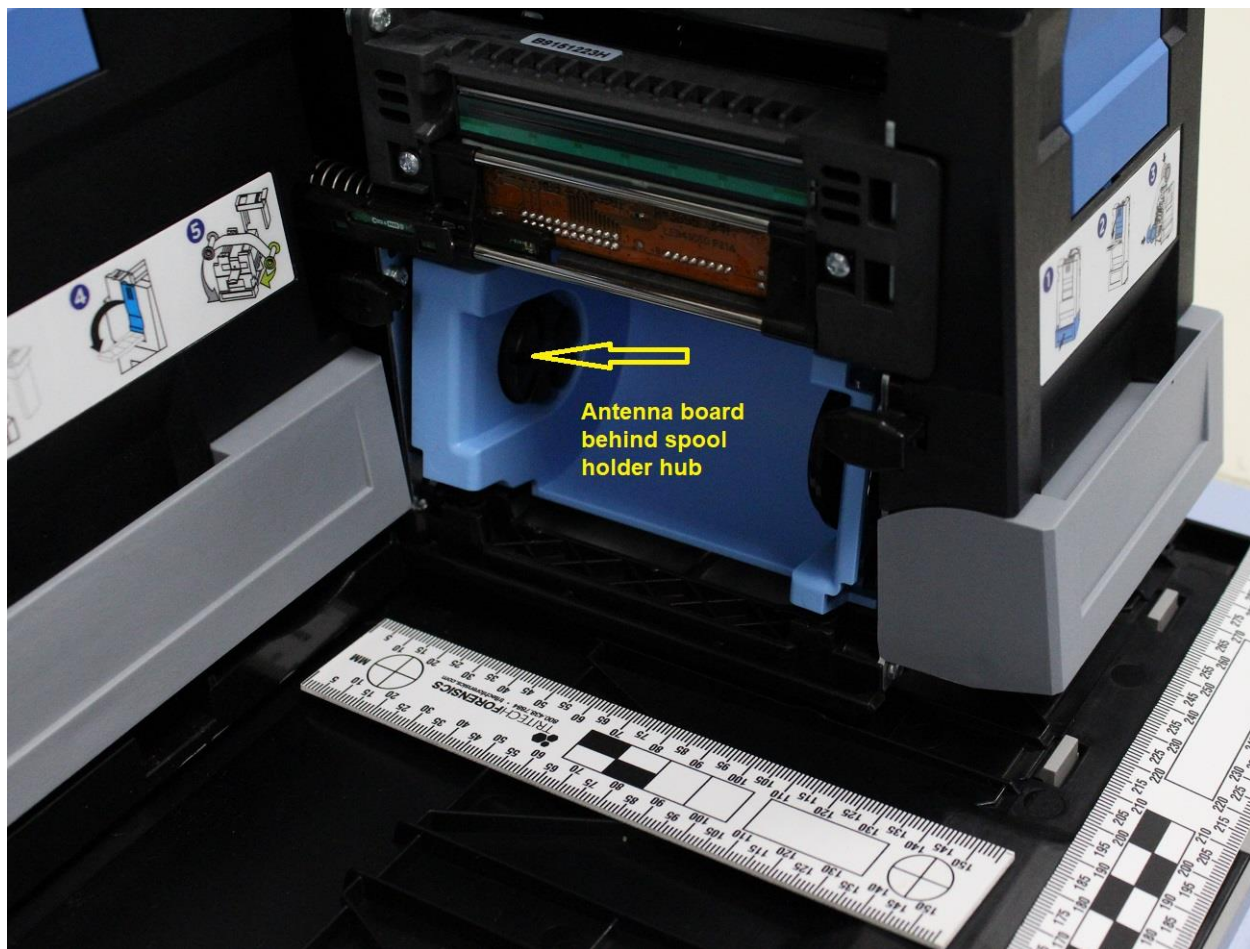
Photograph 5. Printer main board



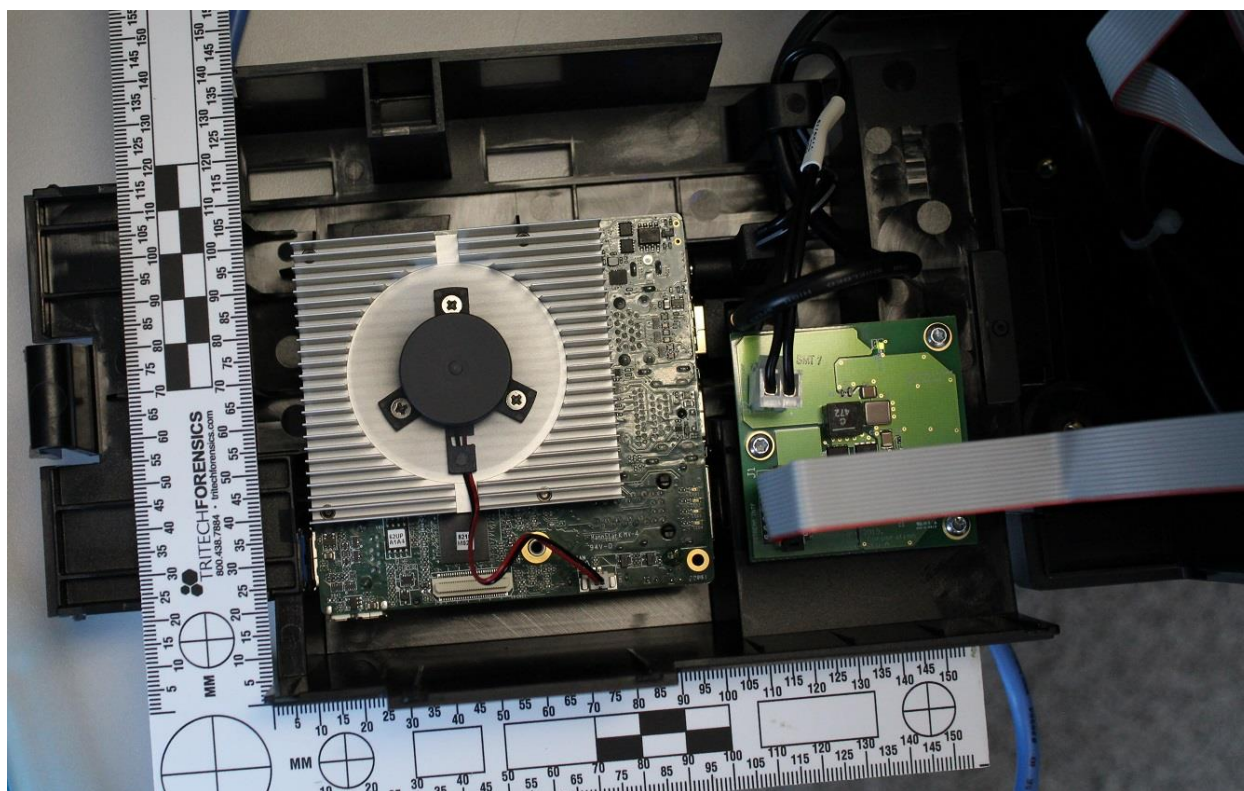
Photograph 6. Regulator board



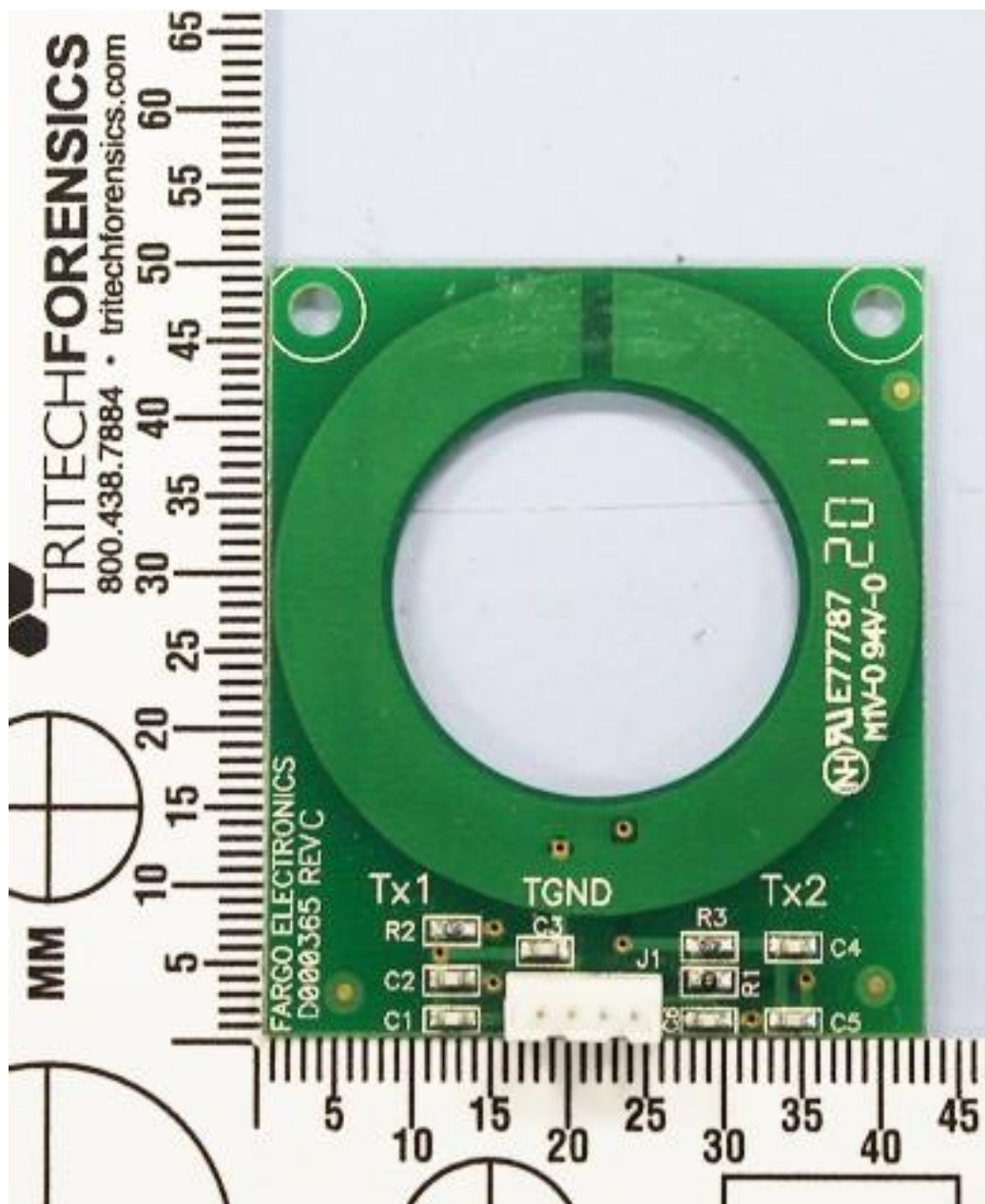
Photograph 7. Ribbon and film assemblies



Photograph 8. Ribbon spool antenna location



Photograph 9. Single board computer and voltage regulator board



Photograph 10. Spool antenna board