


编号: 2.4G-YFD24011A  
成品尺寸: 95\*210mm  
展开尺寸: 665\*210mm  
装订方式: 风琴式7折页  
材质: 200g 铜板纸 双面四色彩印  
日期: 2024.01.19

2.4G 方/圆APP落地灯 折页彩色印说明书 (晟隆钛定制)



2.4G Remote control

## LED FLOOR LAMP

INSTRUCTION

Made in China

FC CE

UNIT: inch

A1 A2

61 61

10 10

A1 A2

1 2 3 4 5 6

A Shelf Lamp 1 Set

B Steel tube 1 Set

D Article lamp 1 Pc

E Remote control 1 Pc

90 LED

C Balancing Weight 1 Pc

F Fixed cap 1 Pc

G 47inch D/C Connector

12V/2A Power Adapter

Plugged in

Unfold Floor Lamp foot

Connect the electric source

Install fixed cap

Install light string and cover

Install light string

Adjust weight piece of card slot position

Open the lampshade gap installation of counter weight

Open the magic tie

Reset weight casing

Balancing Weight

Shelf Lamp

The light strip buckle mounting

Assemble the support pole

STEP (1) STEP (2) STEP (3) STEP (4) STEP (5) STEP (6) STEP (7) STEP (8)

User Manual

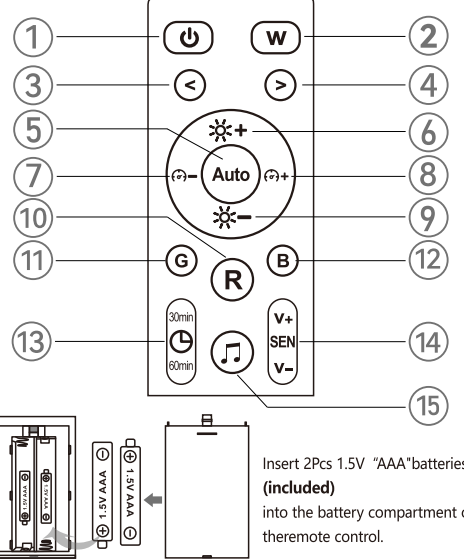
SPECIFICATION

Name	LED Slim Waist Floor Lamp
Material	Metal+Tyvek+Plastic
Shade Color	White
Color of Light	RGBWW
Wattage	18W-8W(RGB)
Luminous Flux	1800LM(Adjustable)
Dimmable	Yes(5%-100%dimming)
Color Temperature	2500K-8500K+RGB
Lifespan	30000hrs
Adapter Voltage	DC 12V/2A
Voltage Input	AC100-240V 50/60Hz
Protection Class	Ip20

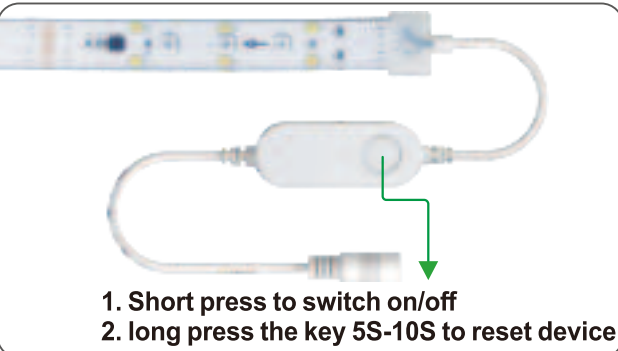
Remote control

1	ON/OFF	9	Brightness-
2	Warm White Cool White Neutral White	10	Red Light
3	<Last RGB Random Mode	11	Green Light
4	Next RGB Random Mode>	12	Blue light
5	Automatic RGB mode selection/pairing		
6	Brightness+	13	Turn Off after 30 minutes Turn Off after 60 minutes
7	RGB Speed-	14	Music mode sensitivity +/-
8	RGB Speed+	15	Music Rhythm Mode (Works only in RGB mode)

Tip:The remote control with memory function.It can remember the last setting when it is turned off.



ON/OFF and reset code operation



Description of 2.4G pair Remote control

- 1. (Auto) Power on the controller within one minute, long press "AUTO" key 10s until light flash slowly, the remote pair with the controller successfully.**
- 2. (Power) Long press "OFF" key 10s until light flash quickly, the remote unbind with the controller. Reset smart controller will also unbind 2.4G remote. (More instructions about 2.4G remote can be found on the APPDevice Details page)**



- 4. (Auto) Once more pair with** Power on the controller within one minute, long press "AUTO" key 10s until light flash slowly, the remote pair with the controller successfully.

Warm tips:

- the product can only be used indoors.
- the product can not be used near the fireplace and other high temperature environment.
- When the product is not used for a long time, pull out the adapter.
- Read the instructions before using the lamp.
- Check for transport damage after receiving the packaged lamp. Report any issues to us directly at us@sumnory.com.
- Do not disassemble or repair the lamp if you are not qualified to do so by your local regulations.
- Use it with an appropriate voltage, don't use it if exceeds the voltage!
- Only use the included power adapter.

Technical Specification

Operation System : Android/IOS  
Work Temperature: -20°C-60°C  
Input Voltage: DC12V  
Power Supply Mode: DC5521  
Maximum current of each channel: 2A  
Transmission Mode: BLUETOOTH  
Certification: CE/ROHS/FCC

CONNECTION STEPS

Operating instructions "Home Linking" APP

- The smart controller can be controlled by mobile APP including IOS and Android system;
- The APP can be found by searching "HomeLinking" in App Store or Google Play, can also scan upper two-dimensional code download "HomeLinking" APP;
- Power on the device;
- Turn on network and bluetooth on your phone, open the APP, register and log in to the home page,click [Start search],or click [+] on the upper right corner, select [Add Device], the APP will automatically search nearby devices (Do not click WIFI research), and then add device according to the guidance of APP .
- There are some other ways to bind device(optional), scan the QR code on the device with APP or select [Add manually] and input the 6-digit device model (check the model on the product label);
- After the device is added to APP,click the device icon to enjoy the function page.
- Devices in reset state can be successfully scanned and added to APP,a device can be bound to only one primary account. To bind with other primary accounts, you need to reset device;
- There are four ways to reset the device,either method will do:  
(1) Long press on/off key on the controller 5S-10S, until see lights streaming alternate red to blue 3 times and finally stop(Continuous poweron-off 5 times can reset no button device);  
(2)When the device is online, long press the device icon on the APP interface to delete it, and you will see the lights stream from red color to blue 3 times in a row and finally stop;  
(3) When the device is online, click [Delete Device] on the device details page;  
(4)You can view the reset method of controller on the App configuration page [How to reset device];
- Click "..." on the upper right corner of device functional page. You can view device details and set more information,including multicolor settings, such as setting the Symphony controller RGB line sequence and number of nodes.
- If cannot search the device or cannot bind successfully,please assure you have registered an account for the APP,make sure the device is in reset state,then restart HomeLinking APP, restart network and bluetooth, connect again.
- You can use tourists mode to experience the device. Use more functions, register an account is necessary .

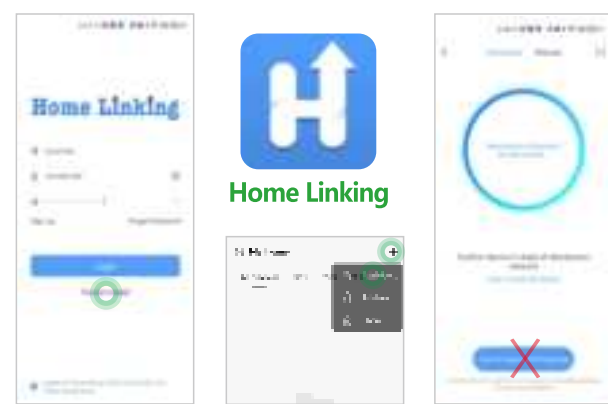
LED

Operating instructions "Home Linking" APP



Instructions "Home Linking" APP

Turn on network and bluetooth on your phone, open the APP, register and log in to the home page,click [Start search],or click [+] on the upper right corner, select [Add Device], the APP will automatically search nearby devices(Do not click WIFI research), and then add device according to the guidance of APP .



- After the device is added to APP, click the device icon to enjoy the function page,until see lights streaming alternate red to blue 3 times.



- CW&RGB: There are three parts: color ring, channel and monochrome.
- Custom: customize the color, adjust the speed and brightness.



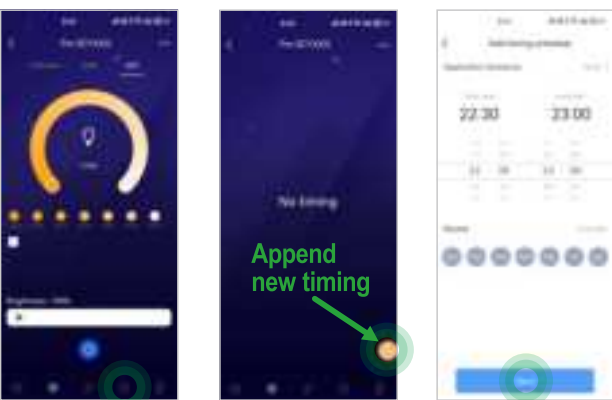
- Mode: select the desired mode, custom mode, and adjust the speed and brightness.



- Music: There are voice control and music, there are hundreds of modes for voice control, and music needs to be played by mobile phones.



- Timing Settings. Turn Off after 30 minutes; Turn Off after 60 minutes.



- You can use tourists mode to experience the device. Use more functions, register an account is necessary.

Value-added features

- Click on the upper left corner "..." of the APP home page to manage devices under more than one family.
- Click "+" in the upper right corner of the APP home page. You can search for devices, add friends chatting, and share devices with friends, but also set master permissions.
- Click "..." on the APP home page. The device can be assigned to different rooms.
- Click "..." in the upper right corner of APP page. You can view device details, assign device groups, and set the power-on status.



FCC Warning:

This equipment has been tested and found to comply with the limits for a Class B digital device, pursuant to part 15 of the FCC Rules. These limits are designed to provide reasonable protection against harmful interference in a residential installation. This equipment generates, uses and can radiate radio frequency energy and, if not installed and used in accordance with the instructions, may cause harmful interference to radio communications. However, there is no guarantee that interference will not occur in a particular installation. If this equipment does cause harmful interference to radio or television reception, which can be determined by turning the equipment off and on, the user is encouraged to try to correct the interference by one or more of the following measures:

- Reorient or relocate the receiving antenna.
- Increase the separation between the equipment and receiver.
- Connect the equipment into an outlet on a circuit different from that to which the receiver is connected.
- Consult the dealer or an experienced radio/TV technician for help.

Caution: Any changes or modifications to this device not explicitly approved by manufacturer could void your authority to operate this equipment.

This device complies with part 15 of the FCC Rules. Operation is subject to the following two conditions:

(1) This device may not cause harmful interference, and (2) this device must accept any interference received, including interference that may cause undesired operation.

This equipment complies with FCC radiation exposure limits set forth for an uncontrolled environment. This equipment should be installed and operated with minimum distance 0cm between the radiator and your body.