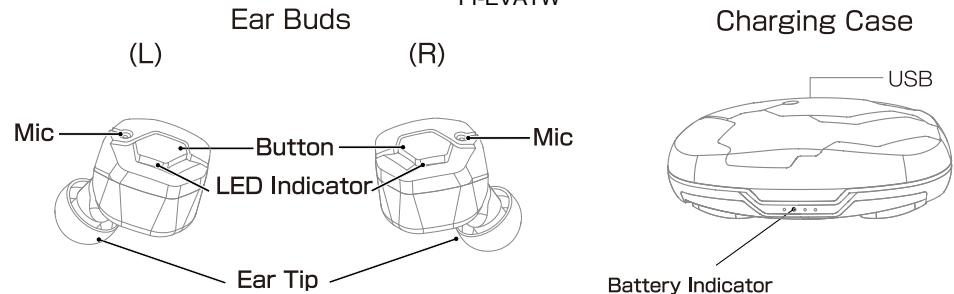
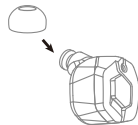


# Product Diagram

True Wireless Earphone  
FI-EVATW



※Please choose and replace Ear Tip to suit your preference.



## Accessory

### USB Charge Cable



# Before Use

## ■ Remove Insulating Sheet

Remove Insulating sheet from back side of earbuds.



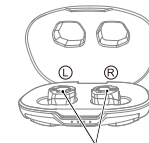
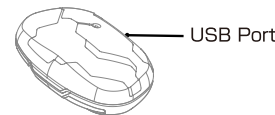
## ■ Battery Charge

Insert USB type A connector of USB Charge Cable to USB AC charger or USB port of PC, and insert Type C USB connector to USB port of Charging Case.

Put the Ear Buds into Charging case .

While charging, the LED light constantly.

When charging is completed, the LED will turn off.



LED Indicator (Orange: Charging)

## ■ Power On/Power Off

Put the Ear Buds into Charging Case , Ear Buds power OFF automatically.

When pick up the Ear buds, power ON automatically.

※When Case battery is low, this function does not work.

## Pairing

### ■ Pairing

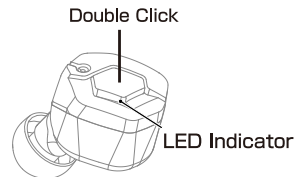
To use Ear Buds first time, you must pairing Ear Bud with mobile phone or player.  
Once your Ear Buds is paired with other devices, they will remain paired and automatically recognize each other.

#### 【First time to use】

1. Turn on Bluetooth function of your mobile phone.
2. Turn on the power of both earbuds.
3. Select "EVATW01" in discovered device list of the phone.
4. Click "Pair" in the phone display. (Twice)

#### 【Re-pairing or Pairing with second mobile phone】

1. Turn on Bluetooth function of your mobile phone.
2. Double click L or R Button. (White and Orange LED will quickly flash)
3. Select "EVATW01-L" or "EVATW01-R" in discovered device list of the phone.
4. Click "Pair" in the phone display. (Twice)



## Charging Case

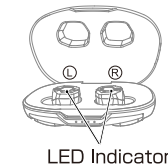
### ■ Charge Case Battery

Insert USB type A connector of USB Charge Cable to USB AC charger or USB port of PC, and insert Micro USB connector to USB port of Charging Case.  
Depending of battery level, the number of lit LED will change.

Battery Indicator	Remaining
☀ ● ● ●	1~25%
○ ☀ ● ●	25~50%
○ ○ ☀ ●	50~75%
○ ○ ○ ☀	75~100%

### ■ Charge EarBuds

Put the Ear Buds into Charging case.  
While charging, the Orange LED light constantly.  
When charging is completed, the LED will turn off.



### ■ Auto Power ON/OFF

Put the Ear Buds into Charging Case, Ear Buds power OFF automatically.  
When pick up the Ear buds power ON automatically.  
※When Case battery is low, this function does not work.

## Switching Master and Slave

The role of the Master unit / Slave unit, when the earbuds taken out from the charging case, the earbud with the larger battery remaining becomes Master unit, the one with the low battery level becomes Slave unit.

For this reason, there is a possibility that Master unit and Slave unit may be switched each time the earbuds is taken out from the charging case.

Also, by periodically putting the earbuds in and out of the charging case, you can efficiently use the batteries of the left and right earphones. So it will be able to operate for a longer time.

Master earbud is displayed as "Connected" on the Bluetooth screen of the connected device.

## Meaning of LED

	Master	Slave
Power ON	White 1Second	
Power OFF	Orange 1Second	
No connection	White 1time each 7Seconds	
Connected	White 1time each 7Seconds	
Calling	White 1time each 7Seconds	
Incoming Call	Flashing White	White 1time each 7Seconds
Talking	White 1time each 3Seconds	White 1time each 7Seconds
Pairing	Flashing White and Orange	White 1time each 7Seconds
Reset mode	Flashing White continuously	
Update mode	Orange 3times each 3Seconds	

## Button Operation

		L	R
Power	ON	1 Click	1 Click
	OFF	Long press 3seconds until beep twice	Long press 3seconds until beep twice
Music	Play	1 Click	
	Pause	1 Click	
	Next Track	-	Long press until a beep
	Previous Track	Long press until a beep	-
Volume	Volume Up	2Click	-
	Volume Down	-	2Click
Phone	Answer Call	1 Click	
	Hang Up	1 Click	
	Reject Call	2Click	
Pairing	Pairing Mode	2Click L or R button with no connection	
Reset	Reset	Long press L and R button for 5seconds while charging	
Voice Command	Start	2Click without Music play (Master)	
Update Mode※	Start	Long press over 12seconds	

※To cancel the update mode, power off by button or reset operation are required.

## Frequently Asked Questions

Q) Suddenly I heard no sound from one earbud.

A) Please turn off earbud and turn on it again.

Q) The white LED lamp of the earphone is continuous blinking.

A) Please try to reset for earbuds.

Q) Bluetooth connection has dropped.

A) Please delete 「EVATW01」 from Bluetooth device list and pairing with your device again.

Q) The pairing between L and R earbud has dropped.

A) Turn off both earbuds and turn on them again.

A) Please try to reset for earbuds.

Q) When I place the earbud in the case, it won't turn off itself.

When I get the earbud out from the case it won't turn on.

A) While the case's power is low, the automatic on off function will not be active. Please turn on/off it manually.

Q) The case has run out of charges.

A) The case will discharge itself, please recharge the case regularly.

Q) I want to know about warranty and repair in outside of Japan.

A) The warranty for this product is valid for 1 years from the day of purchase. During the warranty period, we will repair the product . The warranty is only valid in the country in which the product was purchased. Please contact purchased store directly for the specific repair of the goods.

## Specification

Product Specification	
Driver	Dynamic type φ6mm
Frequency Response	20~20,000Hz
Microphone	Omni-direction /CVC Noise Canceling
Bluetooth Specification	Version5.0/Class2/Multi-Pairing(8)
BluetoothProfile	A2DP, HFP, HSP, AVRCP
Bluetooth Codec	aptX, AAC,SBC
Battery	Earbuds:DC3.7V/50mAh Li-Po Battery Charger Case: DC3.7V/800mAh LiPo Battery
Continuous Play time (Max)	9.5hour(SBC/AAC), 6.5hour(aptX)
Continuous Talk time (Max)	10hour
Charging Time (Min)	2hour
Operation Temperature	5~50°C
Waterproof Level	IPX7
Accessories	Earpieces : S/M/L, Ear-loop, Charger Case, Charging USB cable, User's guide

## FCC Statement

Changes or modifications not expressly approved by the party responsible for compliance could void the user's authority to operate the equipment.

This equipment has been tested and found to comply with the limits for a Class B digital device, pursuant to Part 15 of the FCC Rules. These limits are designed to provide reasonable protection against harmful interference in a residential installation. This equipment generates uses and can radiate radio frequency energy and, if not installed and used in accordance with the instructions, may cause harmful interference to radio communications. However, there is no guarantee that interference will not occur in a particular installation. If this equipment does cause harmful interference to radio or television reception, which can be determined by turning the equipment off and on, the user is encouraged to try to correct the interference by one or more of the following measures:

- Reorient or relocate the receiving antenna.
- Increase the separation between the equipment and receiver.
- Connect the equipment into an outlet on a circuit different from that to which the receiver is connected.
- Consult the dealer or an experienced radio/TV technician for help

This device complies with part 15 of the FCC rules. Operation is subject to the following two conditions (1) this device may not cause harmful interference, and (2) this device must accept any interference received, including interference that may cause undesired operation.