

| | | | | | |
|---|----------|---------------------------|----------------|-----------------|-----------|
| <div>POWERQI</div> <div>产品配色与工艺说明图</div> <div>Product Colour, Material & Finishing Specifications</div> | | | | | |
| Product Model 产品型号 | LC04 | Brand 品牌 | | Job No. 图档编码 | |
| Product Type 产品类 | 无线充电器说明书 | Description 描述 | / | Revision 版本号 | |
| Dimension 尺寸 | 85*65mm | Original Designer 原设计师 | | Date 日期 | 2021/6/22 |
| Scale 比例 | 1:1 | Technology 工艺 | 128g哑粉纸 双面四色印刷 | Verifing 审核 | / |

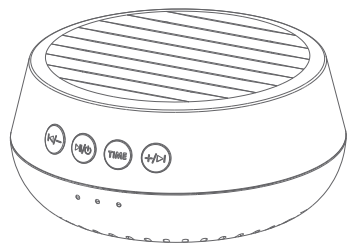
无线充电助眠仪

用户手册

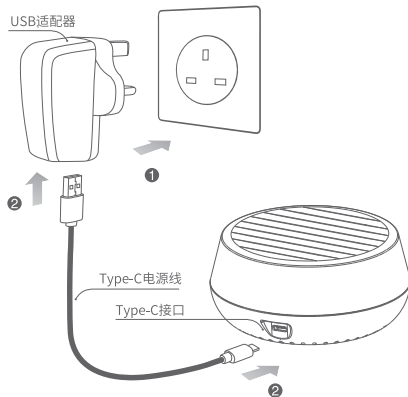
用户手册

感谢使用本产品，本产品是一款无线充电助眠仪,支持白噪音助眠功能。同时也是一款智能手机无线充电器，它可以摆脱复杂的线路连接和连线距离的限制，使用户享受 数码产品无线充电的无限乐趣。

在使用无线充电助眠仪前，请认真阅读本手册并妥善保存，以备查阅。

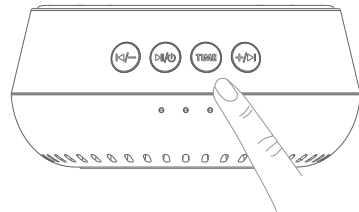


连接适配器



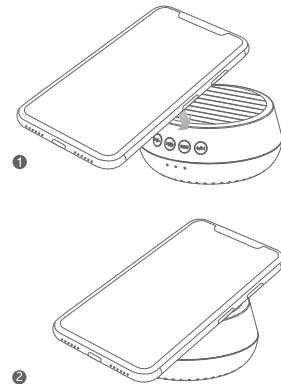
- ① 将电源适配器插在插座上。
② Type-C电源线一端连接适配器，一端连接无线充电器小夜灯。
- 注：本产品同时兼容 Type-C 至 Type-C 电源线。只有 QC2.0 或者 QC3.0 标准的电源适配器才能支持本产品的快充功能。Type-C 至 Type-C 电源线和电源适配器需另外购买。

夜灯使用方法



- ①单击 键打开白噪音助眠功能。
②单击 键设置白噪音时间。
③单击键设置上一曲与下一曲。

对手机进行无线充电



- ① 确认无线充电器连接电源，并处于待机状态。
② 将带有无线充电功能的手机正确放置在发射板上，开始充电。

注意事项

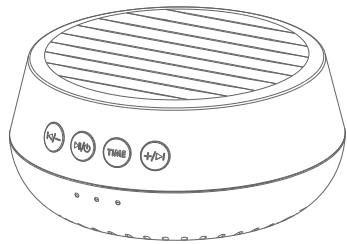
- 1、请勿挤压或碰撞。
2、请勿自行拆卸或投入火中、水中，避免造成短路漏电。
3、请勿在严重高温、潮湿或腐蚀性环境下使用无线充电器，避免损坏电路出现漏电现象。
4、请勿与带磁条或者芯片的磁卡（身份证、银行卡等）放置太近，避免造成磁卡失效。
5、请保持植入医疗设备（心脏起搏器、植入性耳蜗等）与无线充电器之间的距离至少为20cm，以避免对医疗设备造成潜在干扰。
6、应看管好儿童，以确保他们不将无线充电器当成玩具来玩，以避免不必要的意外。

规格参数

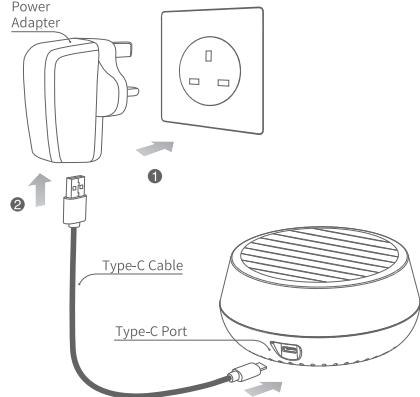
输入电压：DC5V 2A, DC9V 1.67A, DC12V 1.5A 接收距离：≤10mm
输出功率：5W/7.5W/10W/15W 电力转换：≥72%
工作频率：110~205KHz 产品重量：100g
规格尺寸：Φ85×40mm

User Manual

Thanks for using this product, this is a Sound Box Wireless Charger, allowing users to enjoy the digital products wireless charging unlimited fun.
Please read this manual carefully and keep it properly for reference before using the Sound Box Wireless Charger.



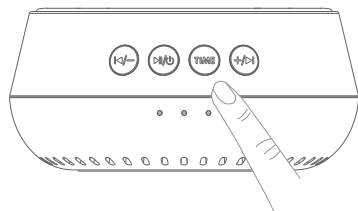
Connect to Power Adapter



- ① Connect the power adapter to socket.
② Connect adapter to the Type-C interface, the other Type-C to pad.

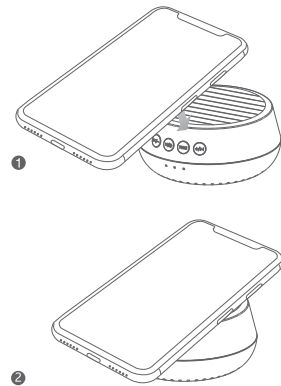
Note: this product works with Type-C to Type-C charging cable. Only QC 2.0 or QC3.0 standard power adapter supprt this product' s quick charge function. You need to buy power adapter separately.Type-C to Type-C charging cable and power adapter need to buy separately.

Usage of night light



- ① Tap the to open the white noise sleeping function.
② Tap the to set the white noise.
③ Tap the to set the last piece next piece.

Charge the phone wirelessly



- ① Make sure the wireless charger dock connect to the power supply.
② Put the Qi-enabled smart phone properly on the transmitter and starts recharging.

FCC Warning

This device complies with part 15 of the FCC Rules. Operation is subject to the following two conditions:(1) This device may not cause harmful interference, and (2) this device must accept any interference received, including interference that may cause undesired operation.

Any Changes or modifications not expressly approved by the party responsible for compliance could void the user's authority to operate the equipment. This equipment has been tested and found to comply with the limits for a Class B digital device, pursuant to part 15 of the FCC Rules. These limits are designed to provide reasonable protection against harmful interference in a residential installation. This equipment generates uses and can radiate radio frequency energy and, if not installed and used in accordance with the instructions, may cause harmful interference to radio communications. However, there is no guarantee that interference will not occur in a particular installation. If this equipment does cause harmful interference to radio or television reception, which can be determined by turning the equipment off and on, the user is encouraged to try to correct the interference by one or more of the following measures:

- Reorient or relocate the receiving antenna.
- Increase the separation between the equipment and receiver.
- Connect the equipment into an outlet on a circuit different from that to which the receiver is connected.
- Consult the dealer or an experienced radio/TV technician for help.

FCC RF exposure statement:
The equipment complies with FCC radiation exposure limits set forth for an uncontrolled environment. During the operation of device a distance of 15 cm surrounding the device and 20 cm above the top surface of the device must be respected.

FCC ID:2AFP2LC04

Specification

Input: DCSV 2A, DC9V 1.67A, DC12V 1.5A Charging distance: ≤10mm
Output: 5W/7.5W/10W/15W Conversion: ≥72%
Frequency: 110~205KHZ NW.: 100g
Dimensions: Φ85×40mm