

WX3310-B1

Dual-Band Wireless AX Gigabit Access Point/Extender
Zyxel MPro Mesh™ Whole-home WiFi Solution

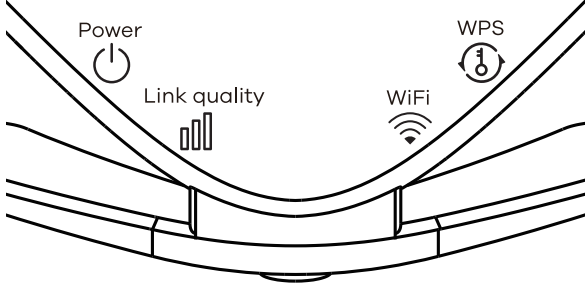
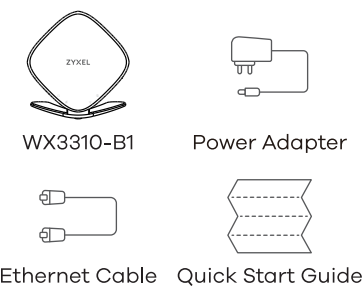
A member of the Zyxel MPro Mesh solution family.
MPro Mesh Solution:

- EX5510-B0/EX5510-B1
- EX3510-B0/EX3510-B1
- WX3310-B1
- MPro Mesh App

Visit www.zyxel.com/us/en for updated information.

Quick Start Guide

Package Contents

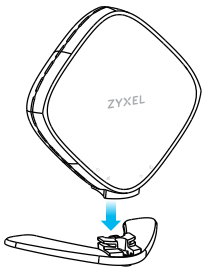


US Importer
Zyxel Communications, Inc
1130 North Miller Street Anaheim, CA 92806-2001
<https://www.zyxel.com/us/en/>

Support Information
North America ☎ +1 800 978 722
USA ✉ support@zyxel.com

Copyright © 2022 Zyxel and/or its affiliates. All Rights Reserved.

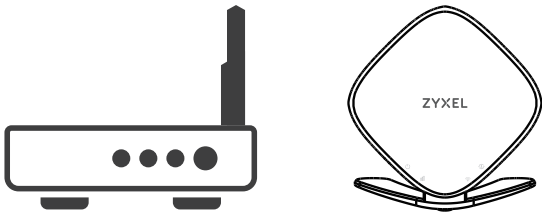
Step 1 Hardware Installation



Attach the bracket to the bottom of the WX3310-B1 as shown.
See the back side if you want to mount the WX3310-B1 on a wall after the initial setup.

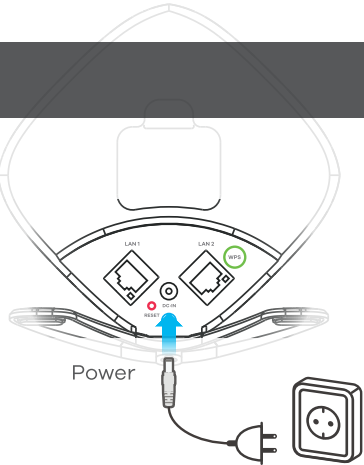
Step 2 Connect via WiFi (See the back side to connect via cable.)

1 Place the WX3310-B1 Near Your Modem/Router



Place your WX3310-B1 next to your modem/router (within 2 meters) for initial setup.
You can move the WX3310-B1 to a new location after the initial setup.

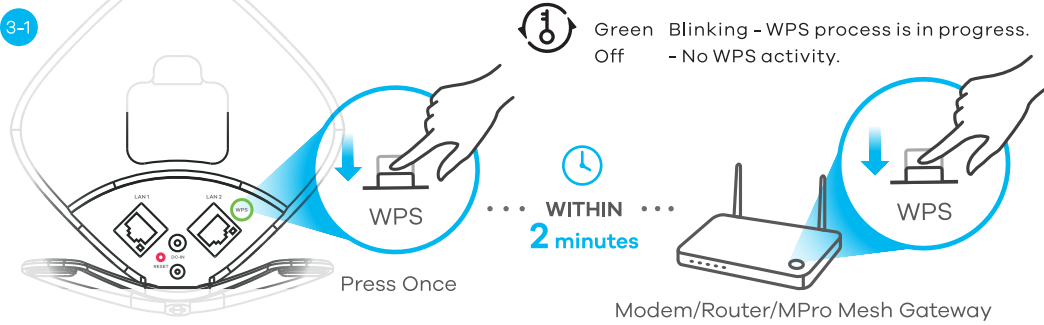
2 Power on



Green Blinking - System is booting.
On - System is ready.
Red On - System has failed.
Off - System is powered off.

Use the included power adaptor to connect the WX3310-B1 power socket to an appropriate power outlet and wait until the power LED stays on solid green. If the LED does not stay on solid green, un-plug the power adaptor and plug it back in again.

3 Connect the WX3310-B1 to Your Modem/Router



Press the **WPS** button once, the WX3310-B1 WPS LED blinks green.
Within Two minutes, press the WPS button on your modem/router. Then the WiFi LED blinks slowly (1 sec on and 1 sec off) during setup. If the WX3310-B1 WPS LED turns red, do the process again.

3-2 WiFi LED blinks slowly (1 sec on and 1 sec off) during setup.

WAIT 2 minutes

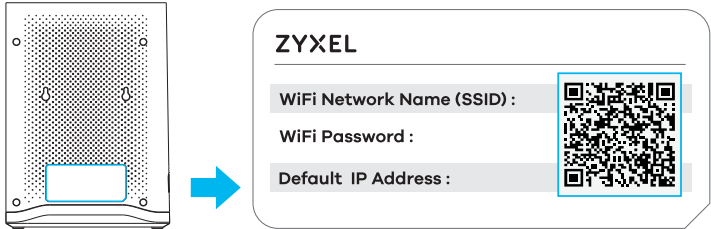
Link quality LED On or Blinking - The WX3310-B1 is connected to the modem/router.
WiFi LED On or Blinking - Your WX3310-B1 is ready for your wireless devices to connect.

Wait Two minutes. When the link quality and WiFi LED are on or blinking, you can go to the next step to connect your wireless device to the WiFi.

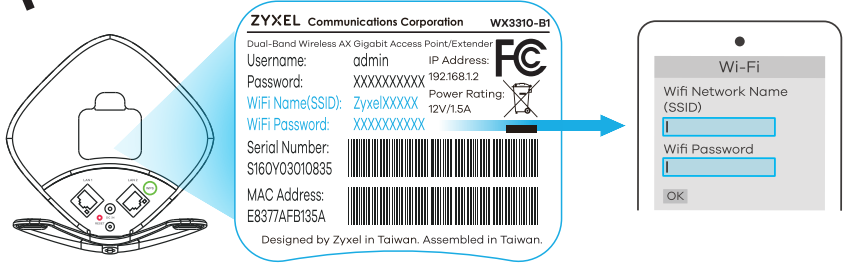
4 Connect Your Device to the WiFi

Check whether the link quality LED is **SOLID ON** or **BLINKING**.

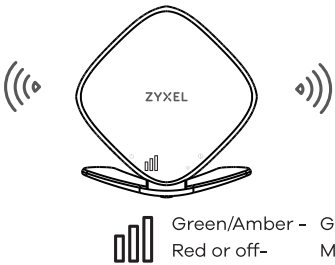
If **SOLID ON**: Your WX3310-B1 has synced the WiFi name (SSID)/password with your Zyxel gateway. Connect your wireless device to the existing WiFi name (SSID). The default WiFi name and password are on the Zyxel gateway back label.



If **BLINKING**: Connect your wireless device to the WiFi name (SSID)/password on the WX3310-B1 back label.



5 Relocate the WX3310-B1 to an Optimal Location

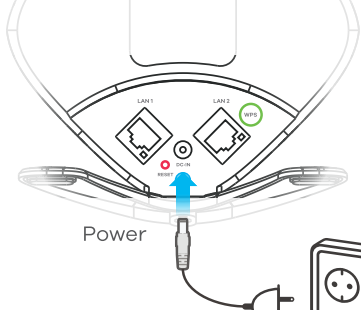


Unplug your WX3310-B1 and move it to a new location about halfway between your modem/router and the area with a poor WiFi signal.
Plug in your WX3310-B1.
The WX3310-B1 must be within range of your modem/router WiFi network. If the link quality LED is OFF or RED, move the WX3310-B1 closer to the modem/router and try again until the link quality LED lights green or amber.
Now you can use WiFi and the internet.

Connect via Cable (Optional)

1

Power on



Green

Blinking - System is booting.

On - System is ready.

Red

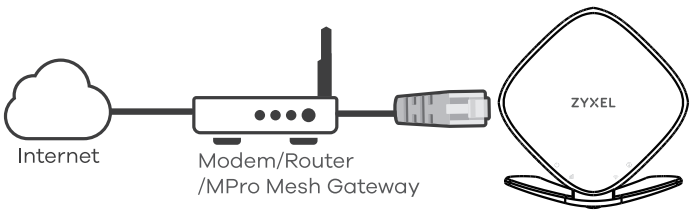
On - System has failed.

Off

- System is powered off.

Use the included power adaptor to connect the WX3310-B1 power socket to an appropriate power outlet and wait until the power LED  stays on solid green. If the LED does not stay on solid green, un-plug the power adaptor and plug it back in again.


2 Connect the WX3310-B1 to Your Modem/Router

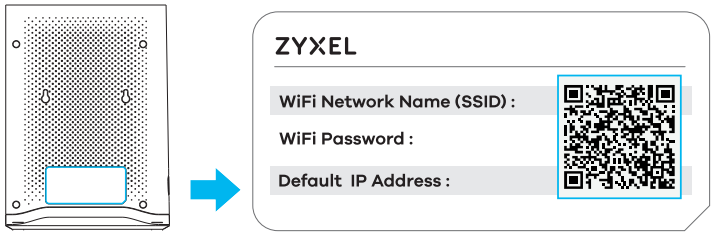



Use the included Ethernet cable to connect **LAN1** or **LAN2** on the WX3310-B1 to an Ethernet port on your modem/router.

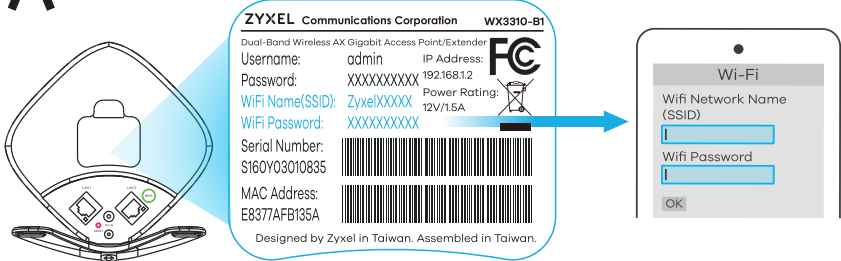
3 Connect Your Device to the WiFi

Check whether the link quality LED is **SOLID ON** or **BLINKING**.

 If **SOLID ON**: Your WX3310-B1 has synced the WiFi name (SSID)/password with your Zyxel gateway. Connect your wireless device to the existing WiFi name (SSID). The default WiFi name and password are on the Zyxel gateway back label. Now you can use WiFi and the internet.

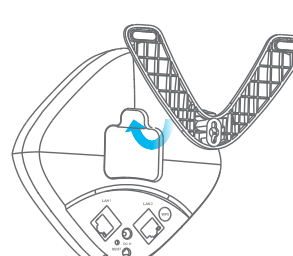


 If **BLINKING**: Connect your wireless device to the WiFi name(SSID)/password on the WX3310-B1 back label. Now you can use WiFi and the internet.



Wall Mounting (Optional)

1



x1

32.0-38.0

5.85-6.85

Unit: mm

x1

5.5-7.0

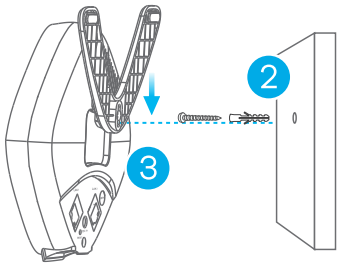
30.75-32.75

2.0-2.3

1.3.0-3.5

Unit: mm

Attach the bracket to the back of the WX3310-B1 as shown.
Drill a hole in the wall. Insert the screw anchor in the hole and install the screw.



Place the WX3310-B1 so the wall mount hole lines up with the screw. Slide the WX3310-B1 down gently to fix it into place.

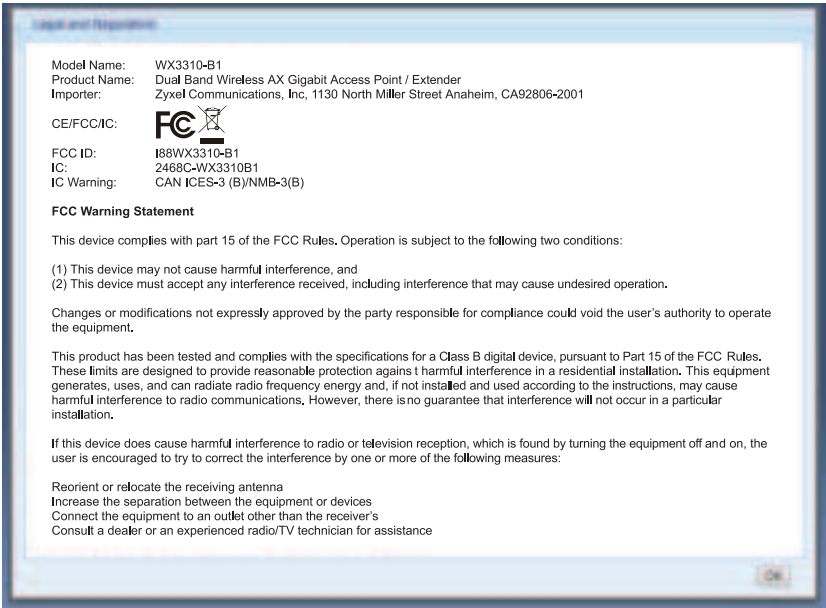
MPro Mesh App



If you are using a Zyxel MPro Mesh gateway, you can use the MPro Mesh app to manage the Zyxel MPro Mesh system including the WX3310-B1.

FCC Safety Warning

The FCC safety warning displays after you log into the web configurator. You can also see it by going to <http://x.x.x.x/legalInfo.html>. Where "x.x.x.x" is the WX3310-B1's IP address.



LED Descriptions

<div><div></div><div>POWER</div></div>	<div><div>Green</div><div>On - The WX3310-B1 is ready.</div></div> <div><div>Blinking</div><div>- The WX3310-B1 is booting.</div></div> <div><div>Red</div><div>On - System failure.</div></div> <div><div>Blinking</div><div>- Firmware upgrading.</div></div> <div><div>Off</div><div>Not receiving power.</div></div>
<div><div><div></div><div>Link Quality</div></div></div>	<div><div>Connected via WiFi (Repeater mode)</div><div><div>Green</div><div>On - Good link quality.</div></div><div><div>Blinking</div><div>- Good link quality, but not synced with a Zyxel MPro Mesh gateway.</div></div><div><div>Amber</div><div>On - Place the WX3310-B1 farther from the modem/router for better coverage.</div></div><div><div>Blinking</div><div>- Place the WX3310-B1 farther from the modem/router for better coverage. Not synced with a Zyxel MPro Mesh gateway.</div></div><div><div>Red</div><div>On - Place the WX3310-B1 closer to the modem/router.</div></div><div><div>Blinking</div><div>- Place the WX3310-B1 closer to the modem/router. Not synced with a Zyxel MPro Mesh gateway.</div></div><div><div>Cable connection (AP mode)</div><div><div>Green</div><div>On - Connected to the modem/router.</div></div><div><div>Blinking</div><div>- Connected, but not synced with a Zyxel MPro Mesh gateway.</div></div><div><div>Off</div><div>There is no connection to the modem/router.</div></div></div></div>
<div><div><div></div><div>WiFi</div></div></div>	<div><div>Green</div><div>On - 2.4G and 5G wireless radios are ready.</div></div> <div><div>Blinking</div><div>- Sending and receiving data.</div></div> <div><div>Slow Blinking</div><div>- (1 sec on and 1 sec off.) The WX3310-B1 is applying WiFi settings.</div></div> <div><div>Off</div><div>The 2.4G or 5G wireless radio is not ready or has failed.</div></div>
<div><div><div></div><div>WPS</div></div></div>	<div><div>Green</div><div>Blinking - The WPS process in progress.</div></div> <div><div>Red</div><div>On - WPS failed.</div></div> <div><div>Blinking</div><div>- Overlapping WPS processes.</div></div> <div><div>Off</div><div>No WPS activity.</div></div>

FCC Radiation Exposure Statement

- This equipment complies with FCC RF radiation exposure limits set forth for an uncontrolled environment.
- This transmitter must be at least 20 cm from the user and must not be co-located or operating in conjunction with any other antenna or transmitter.
- Operation of this device is restricted to indoor use only, except for relevant user’s manual mention that this device can be installed into the external environment.

CANADA

The following information applies if you use the product within Canada area

Industry Canada ICES Statement

CAN ICES-3 (B)/NMB-3(B)

Industry Canada RSS-GEN & RSS-247 Statement

- This device complies with Industry Canada license-exempt RSS standard(s). Operation is subject to the following two conditions: (1) this device may not cause interference, and (2) this device must accept any interference, including interference that may cause undesired operation of the device.

If the product with 5G wireless function operating in 5150–5250 MHz and 5725–5850 MHz, the following attention must be paid,

- The device for operation in the band 5150–5250 MHz is only for indoor use to reduce the potential for harmful interference to co-channel mobile satellite systems.
- For devices with detachable antenna(s), the maximum antenna gain permitted for devices in the band 5725–5850 MHz shall be such that the equipment still complies with the e.i.r.p. limits specified for point-to-point and non-point-to-point operation as appropriate; and
- The worst-case tilt angle(s) necessary to remain compliant with the e.i.r.p. elevation mask requirement set forth in Section 6.2.2(3) of RSS 247 shall be clearly indicated.

If the product with 5G wireless function operating in 5250–5350 MHz and 5470–5725 MHz, the following attention must be paid.

- For devices with detachable antenna(s), the maximum antenna gain permitted for devices in the bands 5250–5350 MHz and 5470–5725 MHz shall be such that the equipment still complies with the e.i.r.p. limit.
- Le présent appareil est conforme aux CNR d'Industrie Canada applicables aux appareils radio exempts de licence. L'exploitation est autorisée aux deux conditions suivantes : (1) l'appareil ne doit pas produire de brouillage, et (2) l'utilisateur de l'appareil doit accepter tout brouillage radioélectrique subi, même si le brouillage est susceptible d'en compromettre le fonctionnement.

Lorsque la fonction sans fil 5G fonctionnant en 5150–5250 MHz and 5725–5850 MHz est activée pour ce produit, il est nécessaire de porter une attention particulière aux choses suivantes

- Les dispositifs fonctionnant dans la bande 5150–5250 MHz sont réservés uniquement pour une utilisation à l'intérieur afin de réduire les risques de brouillage préjudiciable aux systèmes de satellites mobiles utilisant les mêmes canaux;
- Pour les dispositifs munis d'antennes amovibles, le gain maximal d'antenne permis (pour les dispositifs utilisant la bande de 5 725 à 5 850 MHz) doit être conforme à la limite de la p.i.r.e. spécifiée pour l'exploitation point à point et l'exploitation non point à point, selon le cas;
- Les pires angles d'inclinaison nécessaires pour rester conforme à l'exigence de la p.i.r.e. applicable au masque d'élévation, et énoncée à la section 6.2.2 3) du CNR-247, doivent être clairement indiqués.

Lorsque la fonction sans fil 5G fonctionnant en 5250–5350 MHz et 5470–5725 MHz est activée pour ce produit, il est nécessaire de porter une attention particulière aux choses suivantes.

- Pour les dispositifs munis d'antennes amovibles, le gain maximal d'antenne permis pour les dispositifs utilisant les bandes de 5 250 à 5 350 MHz et de 5 470 à 5 725 MHz doit être conforme à la limite de la p.i.r.e.

Industry Canada radiation exposure statement

This device complies with IC radiation exposure limits set forth for an uncontrolled environment. This device should be installed and operated with a minimum distance of 24 cm between the radiator and your body.

Déclaration d'exposition aux radiations

Cet équipement est conforme aux limites d'exposition aux rayonnements IC établies pour un environnement non contrôlé. Cet équipement doit être installé et utilisé avec un minimum de 24 cm de distance entre la source de rayonnement et votre corps.