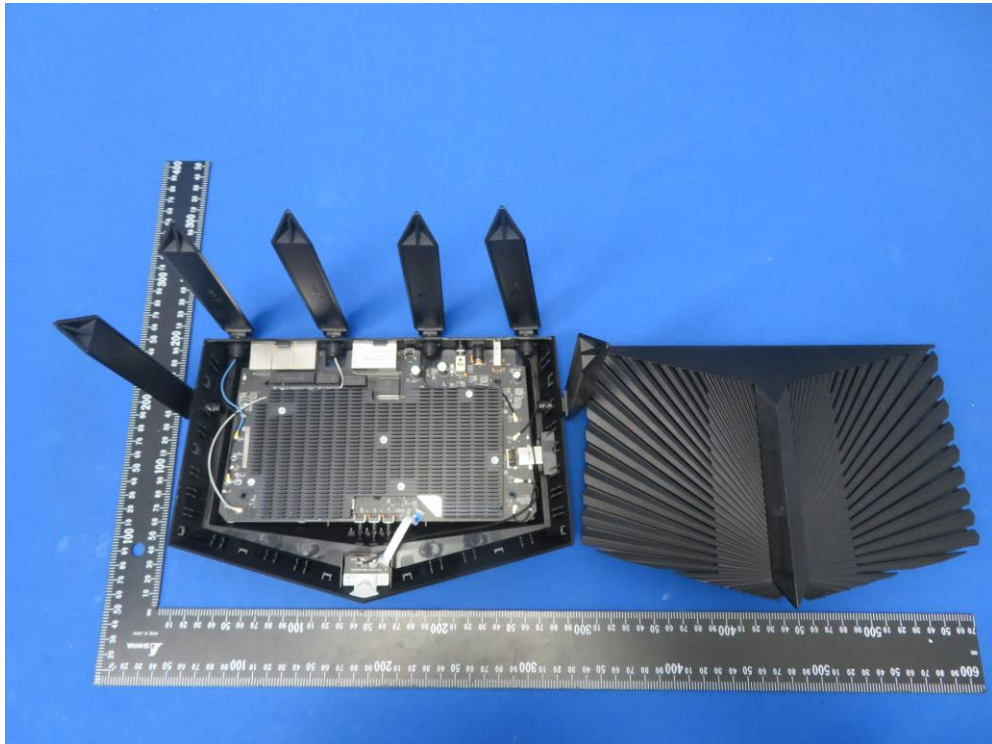
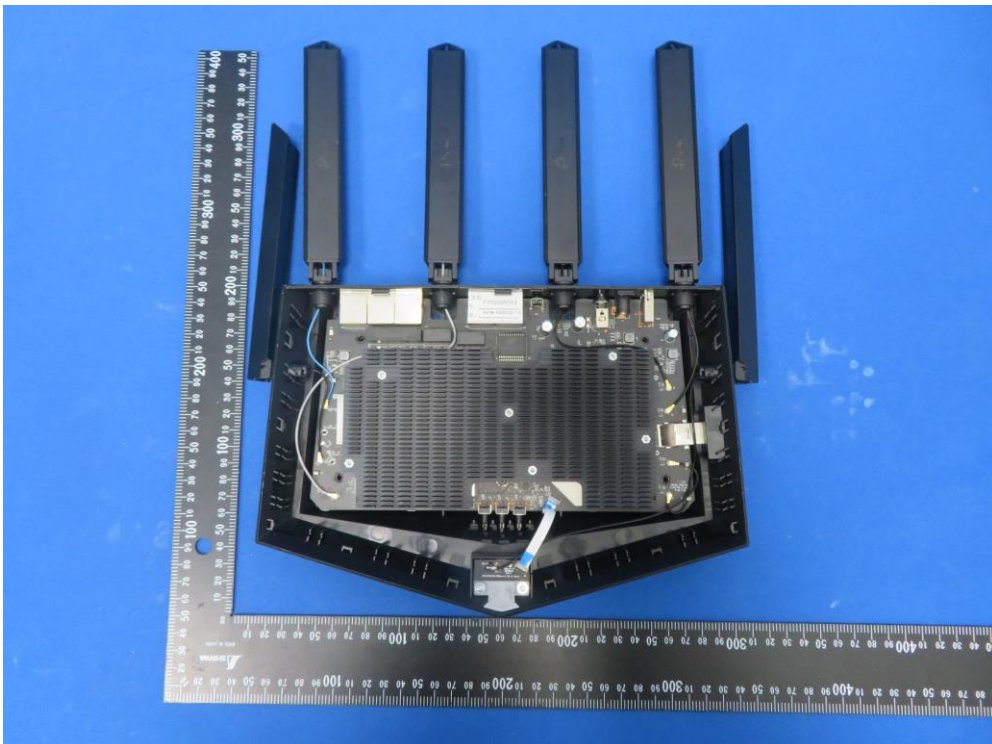


EUT Photograph

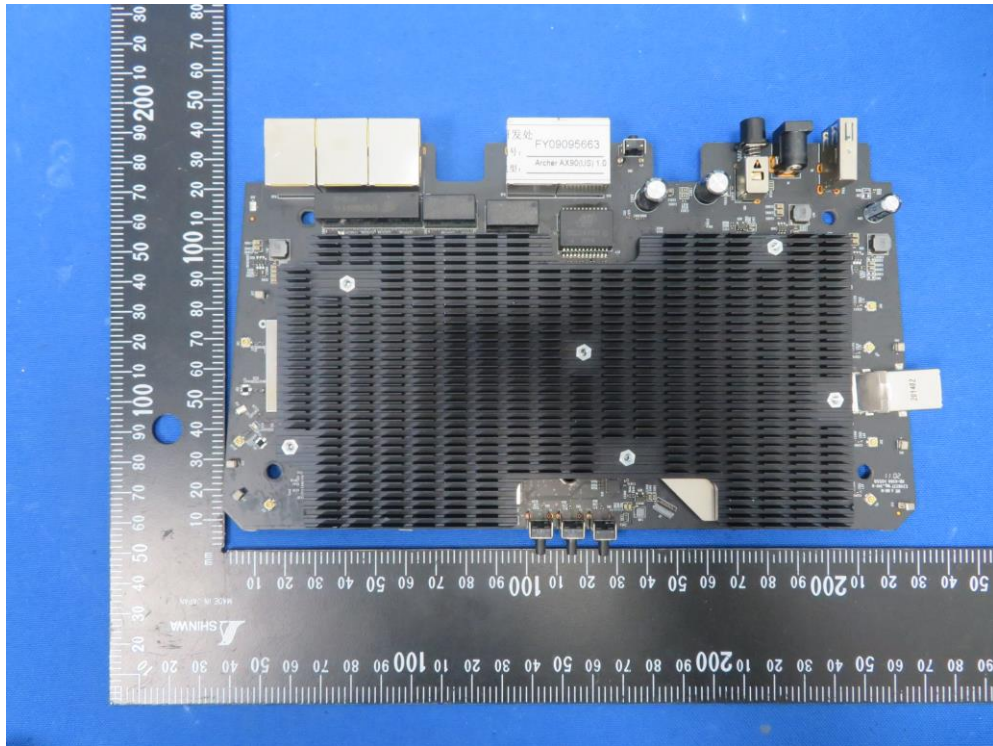
(1) EUT Photo



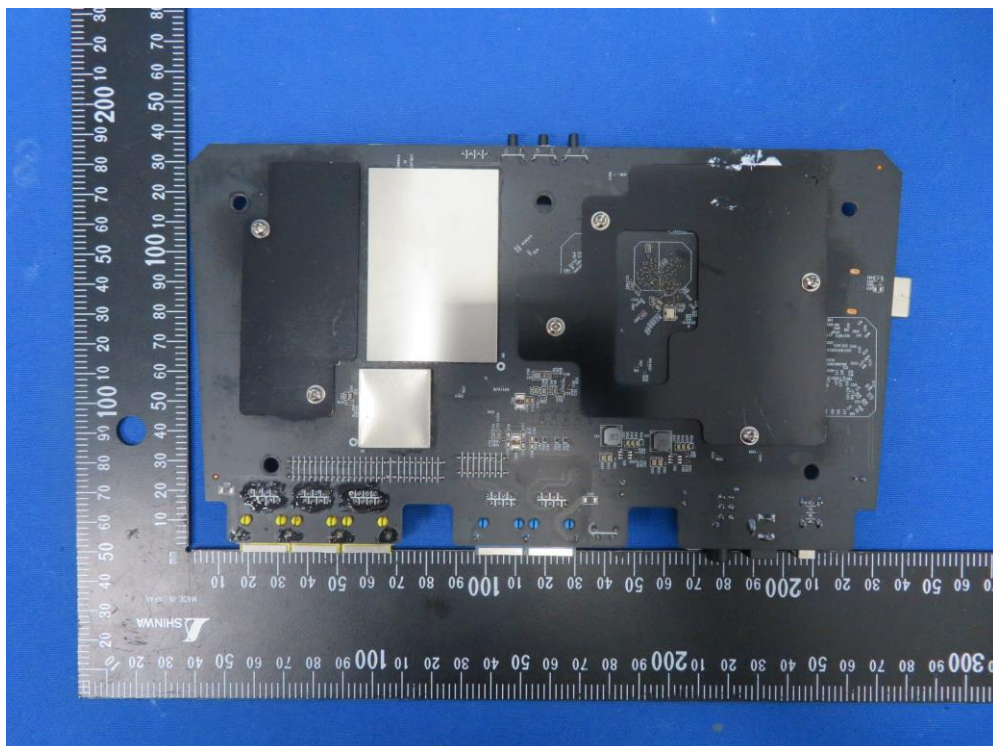
(2) EUT Photo



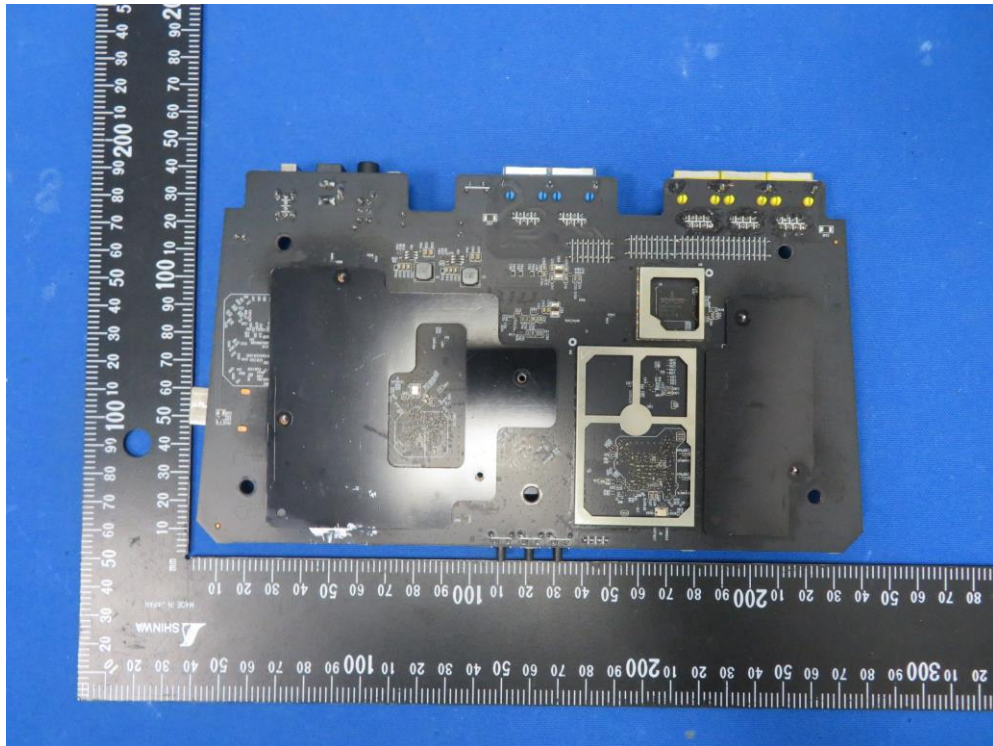
(3) EUT Photo



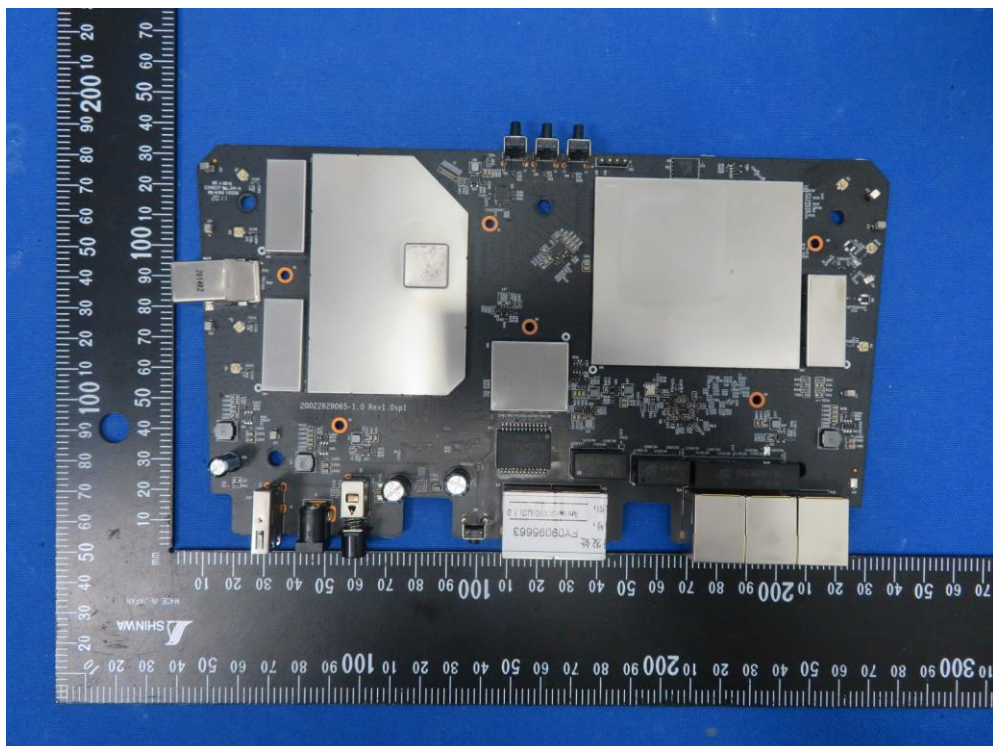
(4) EUT Photo



(5) EUT Photo



(6) EUT Photo



A close-up photograph of a Broadcom BCM53134SKFBG chip mounted on a circuit board. The chip is a small, dark, square component with the Broadcom logo and part number printed on it. It is surrounded by a larger, square, metallic-looking component, likely a heat spreader or a mounting bracket. The circuit board is visible in the background, showing various components and traces.

(13) EUT Photo

