

# Annex B



This test report annex is electronically signed and valid without handwriting signature. For verification of the electronic signatures, the public keys can be requested at the testing laboratory.

**Test report annex authorized:**

Thomas Vogler  
Lab Manager  
Radio Communications & EMC

## 1 Internal Photos

Refer to Customer documentation!

5040A SBU



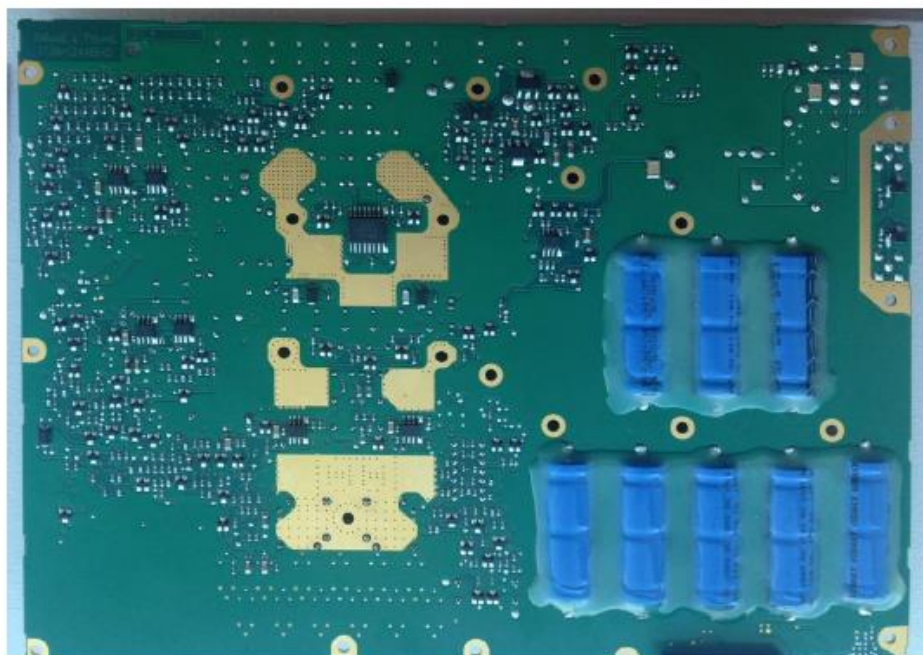
Mainboard Front



Mainboard Back



PSU Front



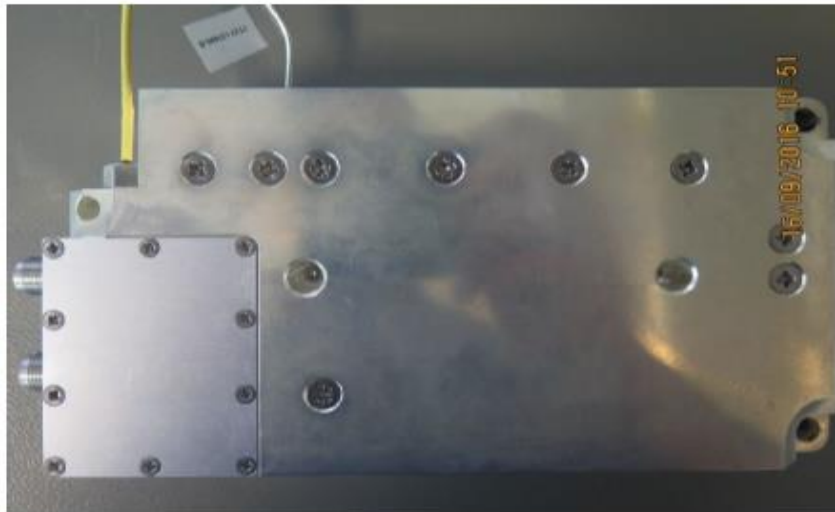
PSU Back



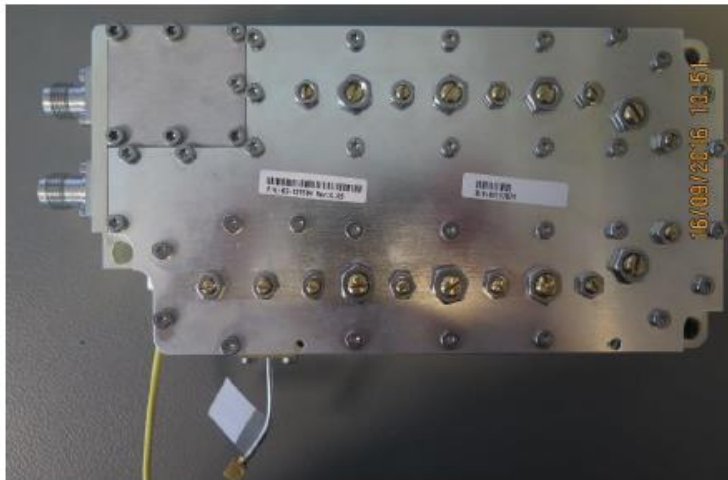
**5016A HLD**



HLD Internal



Diplexer Bottom



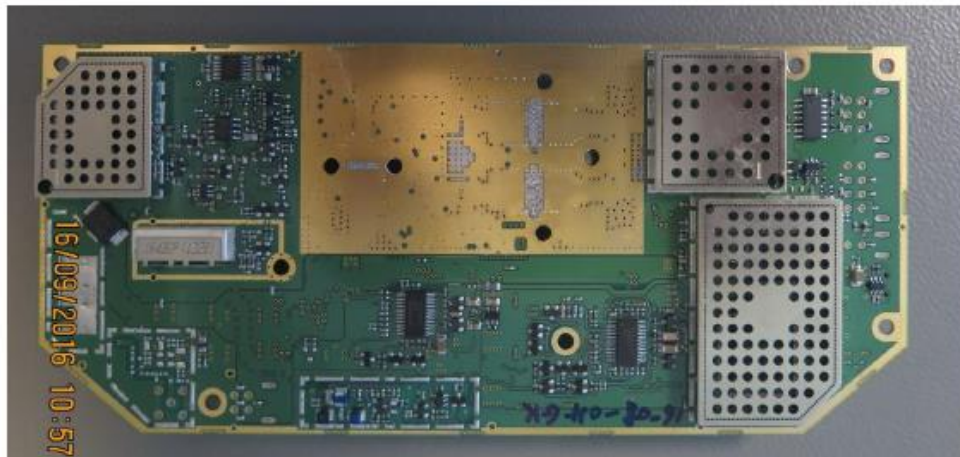
Diplexer Top



Diplexer Connectors



PA Top



PA Bottom

## 2 Document history

Version	Applied changes	Date of release
	Initial release	2021-04-29