

Annex F. Photographs

F.1 Test Sample

<p>Front</p>  <p>A photograph of the front of a dark blue laptop lid. A black ruler is placed horizontally above the lid. Two yellow labels are attached to the lid: one on the left with handwritten text 'FVT, skuz 17, WD 512G Intel 9560 Hynix 8G' and one on the right with 'Intel 9560 +HTK FCC'. A small 'Lenovo' logo is visible in the bottom right corner.</p>	<p>Back</p>  <p>A photograph of the back of the dark blue laptop lid. A black ruler is placed horizontally above the lid. The back features a large rectangular ventilation grille in the center. A small white label is visible near the bottom left corner.</p>
<p>Screen</p>  <p>A photograph of the laptop screen, which is dark and reflects light. A black ruler is placed horizontally above the screen. The screen is framed by a dark bezel.</p>	<p>Keyboard</p>  <p>A photograph of the laptop keyboard and trackpad. A black ruler is placed horizontally above the keyboard. The keyboard is dark with light-colored keys. The trackpad is located below the keyboard. A small 'Lenovo' logo is visible in the bottom right corner.</p>
<p>Laptop</p>  <p>A photograph of the laptop open on a white surface. A black ruler is placed horizontally to the left of the laptop. The laptop is dark blue with a black keyboard and trackpad. The screen is open and shows a dark display.</p>	

F.2 Test positions

Laptop	Bottom Edge
 A photograph showing a laptop positioned vertically within a clear acrylic test chamber. The laptop is held in place by a black foam block and a blue adjustable stand. A black camera is mounted on top of the laptop, pointing downwards. The chamber is placed on a white surface, and a red circular object is visible in the background.	 A photograph showing the bottom edge of a laptop positioned horizontally within a clear acrylic test chamber. The laptop is held in place by a black foam block and a blue adjustable stand. A black camera is mounted on top of the laptop, pointing downwards. The chamber is placed on a white surface, and a red circular object is visible in the background.
Back Face	
 A photograph showing the back face of a laptop positioned vertically within a clear acrylic test chamber. The laptop is held in place by a black foam block and a blue adjustable stand. A black camera is mounted on top of the laptop, pointing downwards. The chamber is placed on a white surface, and a red circular object is visible in the background.	

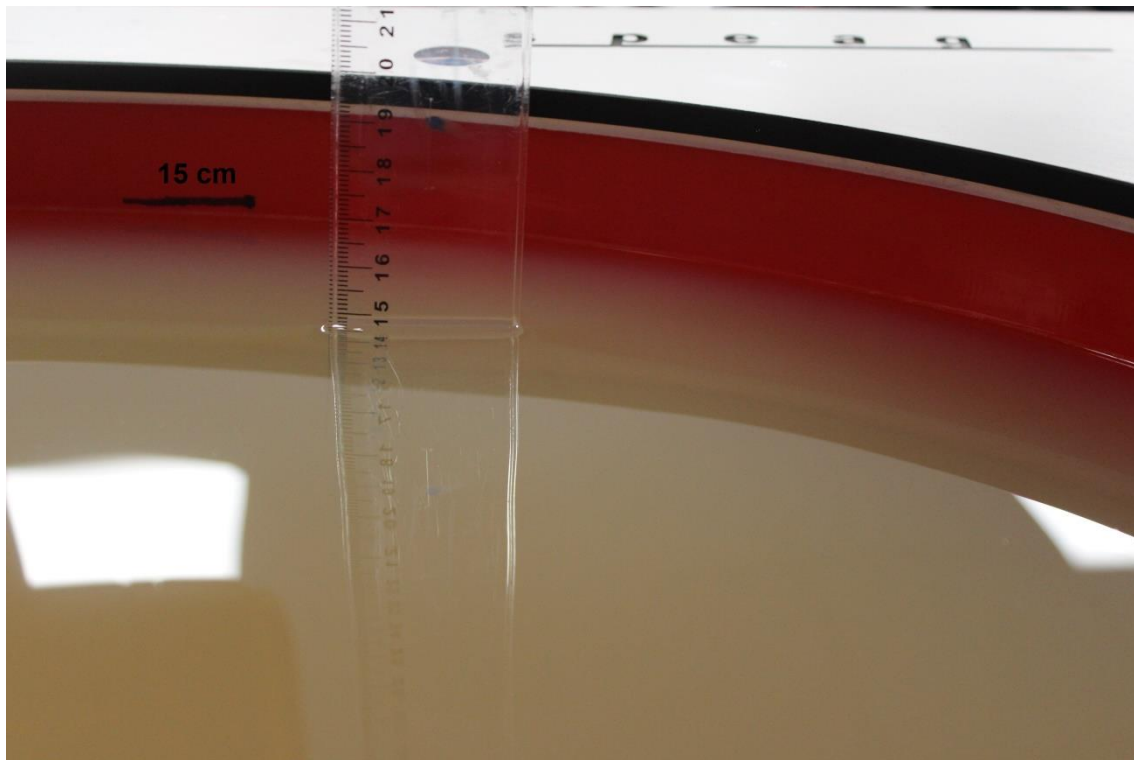
F.3 Antenna host platform location and adjacent edge positions relative to the body

Information provided by the customer

Antenna Host Platform location	Antenna Host Platform location - 2																																																																
	<table><tr><th colspan="4">Minimum Separation Distance</th></tr><tr><th>Item</th><th>Antenna</th><th>Position</th><th>Distance (mm)</th></tr><tr><td>A</td><td>WLAN-Aux</td><td>to Top</td><td>204.88</td></tr><tr><td>B</td><td>WLAN-Aux</td><td>to Right</td><td>221.71</td></tr><tr><td>C</td><td>WLAN-Aux</td><td>to Left</td><td>68.59</td></tr><tr><td>D</td><td>WLAN-Aux</td><td>to Bottom</td><td>14.7</td></tr><tr><td>M</td><td>WLAN-Aux</td><td>to panel bottom</td><td>5.0</td></tr><tr><td>E</td><td>WLAN-Aux</td><td>Aux Antenna Length</td><td>30</td></tr><tr><td>F</td><td>Main-Aux</td><td>Main to Aux</td><td>114.16</td></tr><tr><td>G</td><td>WLAN-Main</td><td>to Top</td><td>204.88</td></tr><tr><td>H</td><td>WLAN-Main</td><td>to Right</td><td>62.55</td></tr><tr><td>I</td><td>WLAN-Main</td><td>to Left</td><td>212.75</td></tr><tr><td>J</td><td>WLAN-Main</td><td>to Bottom</td><td>14.7</td></tr><tr><td>N</td><td>WLAN-Main</td><td>to panel bottom</td><td>5.0</td></tr><tr><td>K</td><td>WLAN-Main</td><td>Aux Antenna Length</td><td>45</td></tr><tr><td>L</td><td>NB</td><td>Bumper thickness</td><td>2.5</td></tr></table>	Minimum Separation Distance				Item	Antenna	Position	Distance (mm)	A	WLAN-Aux	to Top	204.88	B	WLAN-Aux	to Right	221.71	C	WLAN-Aux	to Left	68.59	D	WLAN-Aux	to Bottom	14.7	M	WLAN-Aux	to panel bottom	5.0	E	WLAN-Aux	Aux Antenna Length	30	F	Main-Aux	Main to Aux	114.16	G	WLAN-Main	to Top	204.88	H	WLAN-Main	to Right	62.55	I	WLAN-Main	to Left	212.75	J	WLAN-Main	to Bottom	14.7	N	WLAN-Main	to panel bottom	5.0	K	WLAN-Main	Aux Antenna Length	45	L	NB	Bumper thickness	2.5
Minimum Separation Distance																																																																	
Item	Antenna	Position	Distance (mm)																																																														
A	WLAN-Aux	to Top	204.88																																																														
B	WLAN-Aux	to Right	221.71																																																														
C	WLAN-Aux	to Left	68.59																																																														
D	WLAN-Aux	to Bottom	14.7																																																														
M	WLAN-Aux	to panel bottom	5.0																																																														
E	WLAN-Aux	Aux Antenna Length	30																																																														
F	Main-Aux	Main to Aux	114.16																																																														
G	WLAN-Main	to Top	204.88																																																														
H	WLAN-Main	to Right	62.55																																																														
I	WLAN-Main	to Left	212.75																																																														
J	WLAN-Main	to Bottom	14.7																																																														
N	WLAN-Main	to panel bottom	5.0																																																														
K	WLAN-Main	Aux Antenna Length	45																																																														
L	NB	Bumper thickness	2.5																																																														
	<table><tr><th colspan="4">Minimum Separation Distance</th></tr><tr><th>Item</th><th>Antenna</th><th>Position</th><th>Distance (mm)</th></tr><tr><td>P</td><td>WLAN-Aux</td><td>to Front</td><td>1.5</td></tr><tr><td>Q</td><td>WLAN-Aux</td><td>to Rear</td><td>13.8</td></tr><tr><td>R</td><td>WLAN-Main</td><td>to Front</td><td>1.5</td></tr><tr><td>S</td><td>WLAN-Main</td><td>to Rear</td><td>13.8</td></tr></table>	Minimum Separation Distance				Item	Antenna	Position	Distance (mm)	P	WLAN-Aux	to Front	1.5	Q	WLAN-Aux	to Rear	13.8	R	WLAN-Main	to Front	1.5	S	WLAN-Main	to Rear	13.8																																								
Minimum Separation Distance																																																																	
Item	Antenna	Position	Distance (mm)																																																														
P	WLAN-Aux	to Front	1.5																																																														
Q	WLAN-Aux	to Rear	13.8																																																														
R	WLAN-Main	to Front	1.5																																																														
S	WLAN-Main	to Rear	13.8																																																														

F.4 Phantom liquid level during measurements

ELI phantom Body liquid SAR Dasy SPEAG MBBL600-6000V6 Batch – 180206-04



End of the report

This page is intentionally left blank and marks the last page of the test report.