



MOTION + ENTRY SENSOR

This is the Kangaroo Motion + Entry Sensor. It's a simple security system that will alert you when a door is ajar, a window is cracked or someone is sneaking down your hall.

Once set up, connected and set to Arm, the system will monitor the space for motion and opened doors and windows, then shoot an alert to your phone. Just connect it to your WiFi, stick it on your wall and relish the peace of mind.

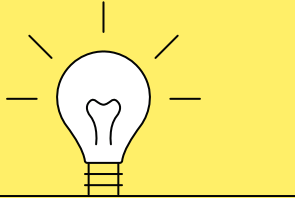


GET STARTED

Download the iOS or Android "Kangaroo Security" app, and have your WiFi password handy.


...that's it.

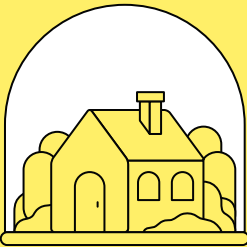
Once you've got the app, you'll be welcomed with a short setup walkthrough.



HELPFUL HINTS

First you will make your account. Then you will set up your sensors. If you need help at any time, please contact customer service.

- During the setup process you will need to turn bluetooth ON. To do so, go to Settings on your phone, select  and turn it on.
- Once all of your devices are paired you may shut your bluetooth off.
- Read all of the instructions on the back of this manual before mounting your device(s).



ARMING & DISARMING

When the system is in **Arm-Home** mode, it will notify you when it detects motion. When it is in **Disarm-Home** mode, it will not.

When in **Arm-Doors & Windows** mode, your open-close sensors remain armed, but your motion sensors do not, so you can feel safe in your home without triggering false alarms.

**Arm-Home**  
when you leave



**Arm-Doors & Windows**  
to be protected at home



**Disarm-Home**  
when you return

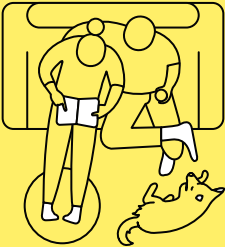


MOTION ALERTS: WHAT TO KNOW

You will receive a notification with the options to:

- Dismiss the alert & automatically Disarm the system.
- Call your Emergency Contact
- Call your local emergency services\*.

\*If you have signed up for Professional Monitoring, alerts that are not responded to will be forwarded to our UL-certified monitoring center. A member of their team will then alert your local authorities for dispatch.



THE PLANS

**Kangaroo Basic**

A great option for simple, straight-forward peace of mind. Receive notifications when sensors are triggered, invite as many users as you'd like and monitor multiple homes.

**Kangaroo Complete**

A comprehensive security plan with all the Basic features, plus the support of a professional monitoring agency, SMS messages and voice notifications, and Alexa and Google Home integration.

**FCC Statement:**

This device complies with Part 15 of the FCC Rules. Operation is subject to the following two conditions:

- (1) This device may not cause harmful interference, and
- (2) This device must accept any interference received, including interference that may cause undesired operation.

**Warning:** Changes or modifications not expressly approved by the party responsible for compliance could void the user's authority to operate the equipment.

NOTE: This equipment has been tested and found to comply with the limits for a Class B digital device, pursuant to Part 15 of the FCC Rules. These limits are designed to provide reasonable protection against harmful interference in a residential installation.

This equipment generates uses and can radiate radio frequency energy and, if not installed and used in accordance with the instructions, may cause harmful interference to radio communications. However, there is no guarantee that interference will not occur in a particular installation. If this equipment does cause harmful interference to radio or television reception, which can be determined by turning the equipment off and on, the user is encouraged to try to correct the interference by one or more of the following measures:

- Reorient or relocate the receiving antenna.
- Increase the separation between the equipment and receiver.
- Connect the equipment into an outlet on a circuit different from that to which the receiver is connected.
- Consult the dealer or an experienced radio/TV technician for help.

**FCC Radiation Exposure Statement:**

This equipment complies with FCC radiation exposure limits set forth for an uncontrolled environment. This equipment should be installed and operated with minimum distance 20cm between the radiator & your body



**Call**

800-371-0097



**Chat**

[heykangaroo.com/support](https://heykangaroo.com/support)



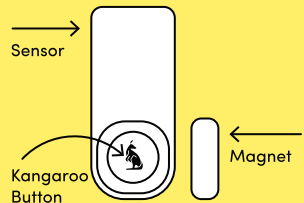
**Email**

[support@heykangaroo.com](mailto:support@heykangaroo.com)



**FAQ**

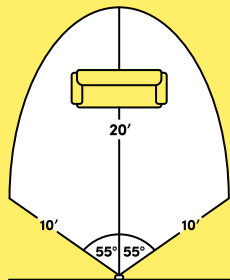
[heykangaroo.com/support](https://heykangaroo.com/support)



## HOW THIS WORKS

Your Motion + Entry Sensor detects motion and opening of your doors and windows. It can be used for just one or all of these options.

If you're home in Arm-Doors & Windows mode, you can push the **Kangaroo Button** to temporarily disarm the sensor. You have 10 seconds to open the door/window. Once opened, the sensor will remain disarmed until you close it, at which point you have a 1-minute grace period before it re-arms doors & windows.



## MOTION DETECTION RANGE

If you're a numbers person, our Motion + Entry Sensor monitors up to a 20' distance and in an arc 55° to the left & right

If you're not, just know that one sensor can generally cover a room, but can't detect through walls or doors.



## MONITOR MOTION

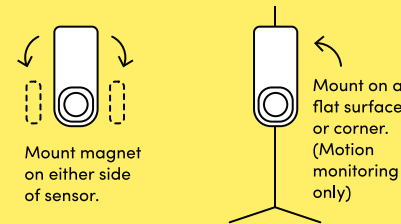
Select a spot between 4'6" and 5'6" off the floor (or as close as possible.)

- Avoid placing near heaters, AC, and lamps as the sensor detects changes in temperature.
- Don't place the sensor directly facing a window, as birds, cars, or innocent pedestrians could trigger the sensor.
- If you have an acrobatic pet, avoid placing the sensor facing favorite perches of that pet.
- You do not need the magnet to monitor motion.

## MONITOR OPEN / CLOSE

To detect open doors and windows, **make sure the magnet is aligned with the bottom of the sensor** (as illustrated). The two pieces should be no more than 20mm apart when the door or window is closed.

Before sticking the magnet, position it next to the sensor. When you see the sensor light up, you are within the 20mm range and can peel and stick the magnet!



## HOW TO MOUNT

**The magnet can be to the left or the right of the sensor.** First use a light touch and make sure it's in the spot you want, then push and hold firmly for 30 seconds.



False alarms suck. If you're getting them on the regular, try re-positioning based on the tips above. If you went by the book and are still getting them, contact us.

To mount the sensor with a screw, slide the front piece off to access the screw hole on the back. Then slide the front cover back into place.

## Reset

Hold down the Kangaroo Button for 15s.

## Batteries

The app will notify you when your battery life is low. To change them out, keep the device on the wall, and just slide the front face upwards. We recommend lithium AA batteries because they can last up to 2 years, whereas alkaline batteries have a lifespan of up to 6 months.

## Troubleshooting: connectivity, pairing and power

- Ensure the device's batteries are working.
- Make sure the yellow battery tab is removed and the batteries are aligned correctly.
- If you're having trouble pairing, try resetting.

## Specs

Detection Range: 110° field of view, up to 20ft away  
Size: 90mm x 39mm x 18mm  
Weight: 24g without batteries  
Battery: 2 x AA included  
Operating temperature: -5°C to 50°C

## System Requirements

WiFi 802.11 b/g/n, 2.4GHz (WEP, WPA, or WPA2 encryption) compatible router. Mobile device with iOS 10.0 and above | Android 5.0 and above. Active internet and cellular connections are required. Alarm monitoring service requires a Kangaroo Security subscription. For indoor use only.

**1-year worry-free warranty**  
heykangaroo.com/warranty

# Motion + Entry Sensor Manual

