



Smart Pet Fountain



Quick Guide User Manual

V1.0

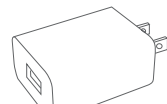
Content

Please read this manual carefully before operation to ensure safe usage of the pet fountain. This instruction manual is suitable for both Multi-Function Version and Normal Version of pet fountain. , the basic version will not be introduced repeatedly.

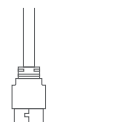
Product Introduction.....	2
Operation guide.....	3-8
First usage.....	3
Binding smart life app.....	3-5
APP interface introduction.....	6-8
Diagram Of Adding Water After Pet Fountain Lacks Water.....	9
Cleaning diagram.....	10
Precautions.....	11
FAQ.....	12

Pet Fountain
(subject to the actual product)

List of accessories
(subject to the actual product)



Adapter X1



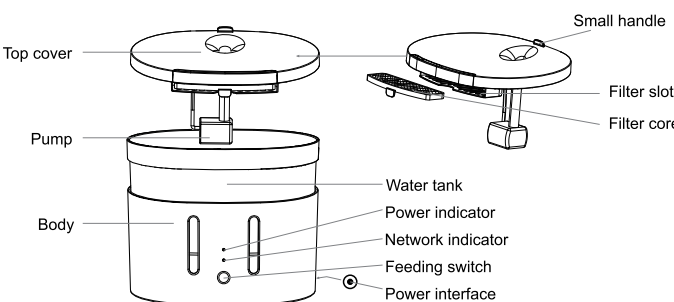
Anti-biting power cord X1



User manual

Product introduction

Structure introduction



Operation guide

1.First usage

- ①.Please take out pet fountain and accessories.
- ②.Please clean inner wall and top cover of water storage bucket and filter core.
- ③.please insert filter core into the filter core slot at the bottom of the top cover after immersing the filter element in clean water for 2 minutes.
- ④.Please add water to the transparent water bucket above the MIN line and below the MAX line.
- ⑤>Please take the adapter and plug it into the USB interface of the button of pet fountain.
- ⑥.Please press the button on the front body of pet fountain to turn on and off the water feeding function, and please press the button for long time(around 6 to 7 seconds) to restore factory default settings, it will comes to network configuration status(network indicator flashes).

2. Binding Smart Life APP

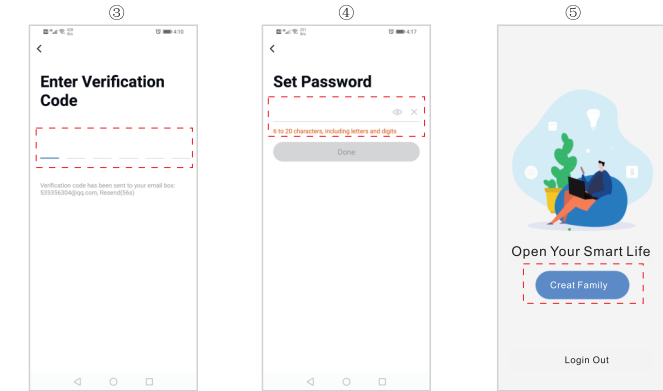
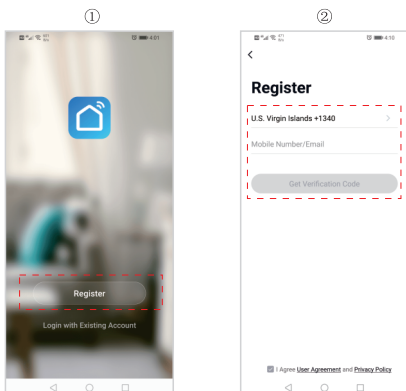
2.1:APP download and installation

Please scan the QR code below or QR code on the packing box to download Smart Life app and complete the installation.



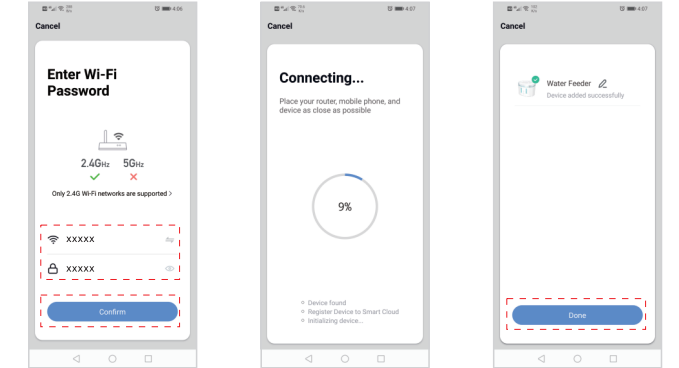
2.2: App Registration

- ①.Please open "Smart Life" APP
- ②.Please click "create new account"
- ③.Please select the time zone to input the account and click to get verification code
- ④.Please input the received verification code for verification
- ⑤.Please set up login password and login successfully.



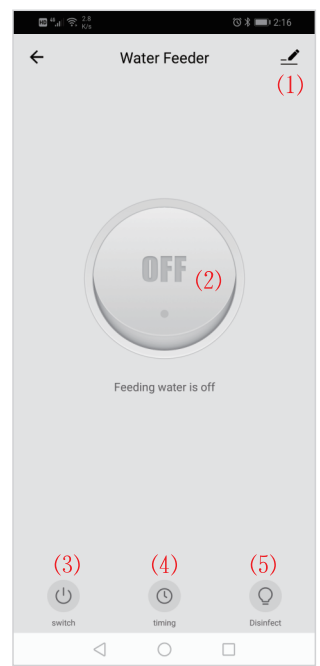
3.3: Pet Fountain Configuration

- ③.Please log in APP to add device
- ④.Enter Wi-Fi Password
- ⑤.Click "Pet Fountain"
- ⑥.Connecting....
- ⑦.Confirm indicator rapidly blink
- ⑧.Device added successfully



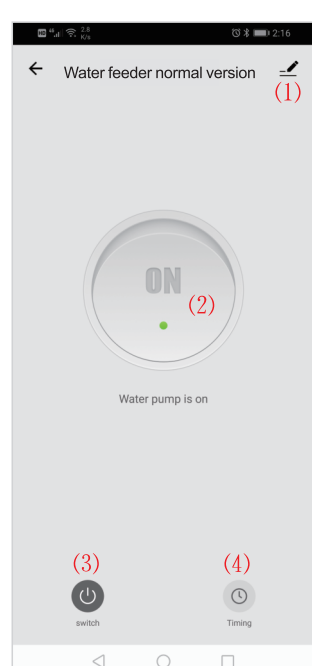
(UV Disinfection Version)Interface Introduction

- UV Disinfection Version
- ① Setting : other functions
 - ② Switch
 - ③ Timing
 - ④ Disinfect

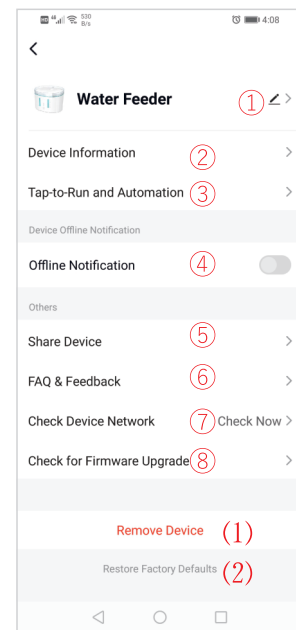


(Normal Version)interface introduction

- Normal Version
- ① Setting : other functions
 - ② Switch
 - ③ Timing
 - ④ Timing



Setting introduction

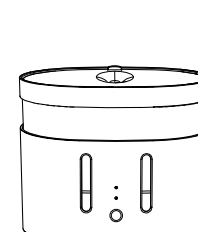


Setting

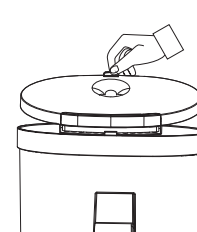
- ① Device Name
- ② Device Information
- ③ Tap-to -Run and Automation
- ④ Offline Notification
- ⑤ Share Device
- ⑥ FAQ & Feedback
- ⑦ Add to Home Screen
- ⑧ Check Device Network

- (1) Remove
- (2) Reset

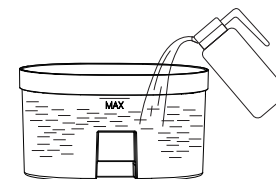
Adding Water Instruction



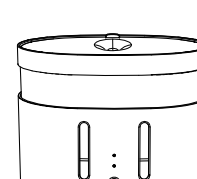
1.No need to power off, just take out the water tank and cover



2.No need to power off, just take out the water tank and cover



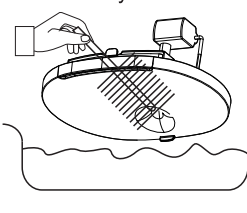
3.Add water till up to MAX level on the water tank
Warning: Hot Water Forbidden



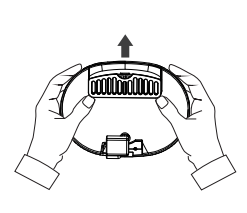
4.Put the top cover and put the water tank back

Clean Instruction

Recommended to clean at least once per week and change water to prevent poor water quality or poor outlet water caused by filtration blockage.



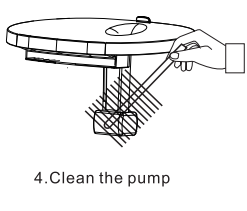
1.Remove the water tank cover and clean



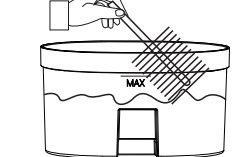
2.Remove the filter and groove carefully



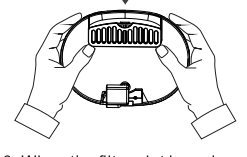
3.Clean the filter groove and remove dirties



4.Clean the pump



5.Clean inside of the water tank and dry outside



6. When the filter slot is replaced by the top cover, check whether the bayonet is closed.

Attention

1. Be sure to clean the pet fountain after disconnecting the power supply.
2. Do not immerse the pet fountain body and power adapter in water.
3. For the first time, please clean the inside of the transparent water tank, top cover and the filter slot .
4. The filter may be attached with a small amount of powder. This is a normal phenomenon. Rinse .
5. The filter is recommended to be replaced once a month.

Warning

1. Pet fountain and all accessories are not edible.
2. Please use pet fountain in a dry indoor environment.
3. Do not place pet fountain in a high place.
4. Keep the pet fountain horizontal when using it. Do not tilt or tip it.
5. Do not add hot water or boiling water in the water tank to avoid hot deformation.
6. Please make sure that the power cable is blocked and stored to avoid leakage damage caused by pet bites. The power supply is in safe working voltage, does not endanger the safety of pets and owners.
7. Do not disassemble or repair the pet fountain, otherwise it will affect the after-sales service.
8. Please do not use any accessories that are not provided by the original manufacturer. We are only responsible for the performance and safety of the officially designated accessories.

FAQ

Q. How often does pet fountain change the water and how often we need to clean it?
A. According to the water quality and pet drinking habits. It is recommended to replace or add water every 2-3 days; it is recommended to clean at least once a week (including water tank, top cover, filter slot, filter), and completely change the water to prevent fouling from clogging the filter slot, resulting in abnormal water quality .
Do not use hot water or boiling water when cleaning.

Q. What kinds of water should be used in the pet fountain?
A. It is recommended to use pure water or mineral water.

Q. How often does filter core need to be replaced?
A. The filter core is recommended to be replaced once a month to maintain a good filter effect.

Q. Does the pet fountain consume lots of power? Is there any noise?
A. It has low working power (MAX4.5W) and consumes about 1 kWh in 10 days. The product adopts silent pump and noise reduction design, working without noise. (There is natural water sounds to attract pets to drink plenty of water.)

Q. Is there any safety hazard when the power cable of the pet fountain is bitten by a pet?
A. The power supply adopts 5V low voltage and 0.6A low current to ensure the safety of pets. Friendly reminder: use broken power core will have a hazards of pets eating, please replace it in time.

Q. What are the most suitable cats and dogs for pet fountain?
A. Suitable for adult cats and small medium dogs.

Q:What is the reason that the pet fountain does not work after it is powered on?

1. Check if the power cord is damaged;
2. Check if the bottom power connector is loose;
3. Check if the water pump outlet and hose connection are loose.

Repair form

Commodity maintenance record

Repair time

Repair failure

cause of issue

Troubleshooting

Return certificate

Validation date

Original device ID

New device ID

Signature of maintenance personnel

Maintenance department stamp

FCC Statement

This equipment has been tested and found to comply with the limits for a Class B digital device, pursuant to part 15 of the FCC Rules. These limits are designed to provide reasonable protection against harmful interference in a residential installation. This equipment generates, uses and can radiate radio frequency energy and, if not installed and used in accordance with the instructions, may cause harmful interference to radio communications. However, there is no guarantee that interference will not occur in a particular installation. If this equipment does cause harmful interference to radio or television reception, which can be determined by turning the equipment off and on, the user is encouraged to try to correct the interference by one or more of the following measures:

- Reconnect or relocate the receiving antenna.
- Increase the separation between the equipment and receiver.
- Connect the equipment into an outlet on a circuit different from that to which the receiver is connected.

• Consult the dealer or an experienced radio/TV technician for help.
Caution: Any changes or modifications to this device not explicitly approved by manufacturer could void your authority to operate this equipment.

This device complies with part 15 of the FCC Rules. Operation is subject to the following two conditions: (1) This device may not cause harmful interference, and (2) this device must accept any interference received, including interference that may cause undesired operation.

RF Exposure Statement

This equipment complies with FCC radiation exposure limits set forth for an uncontrolled environment. This equipment should be installed and operated with minimum distance 20cm between the radiator and your body.
This transmitter must not be co-located or operating in conjunction with any other antenna or transmitter.

FCC ID:2APD7-TA-WF