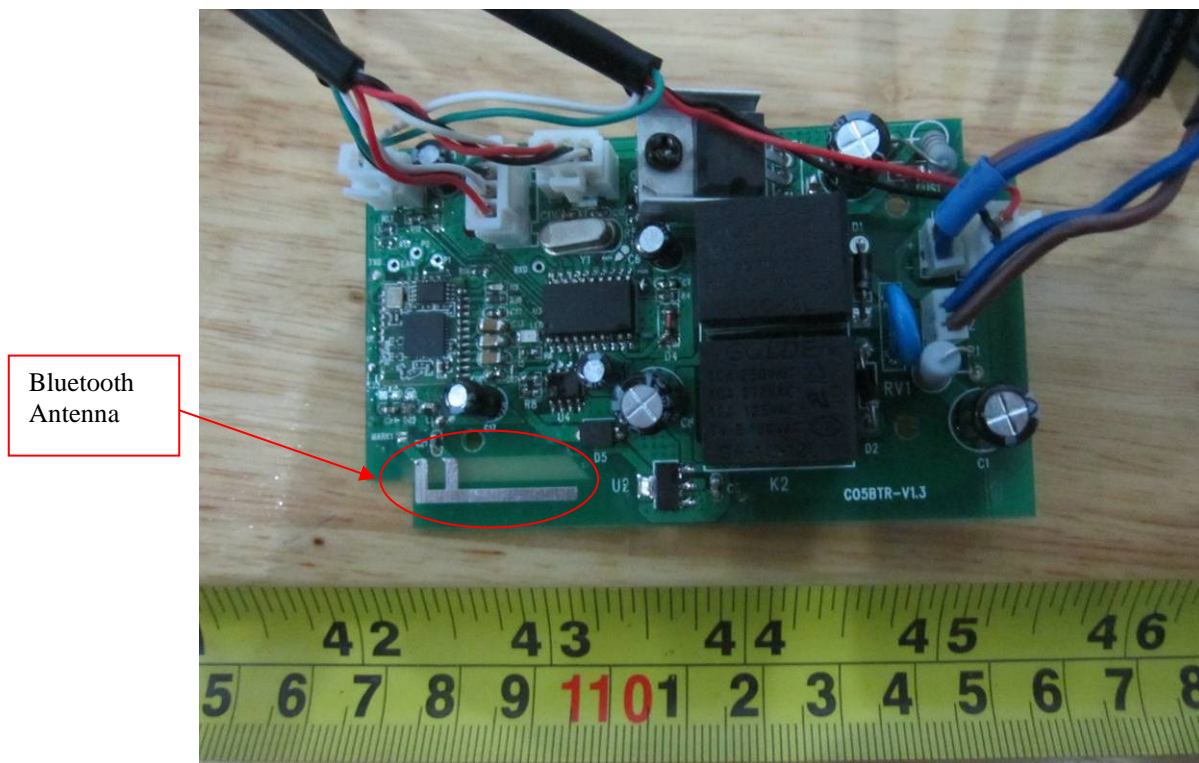


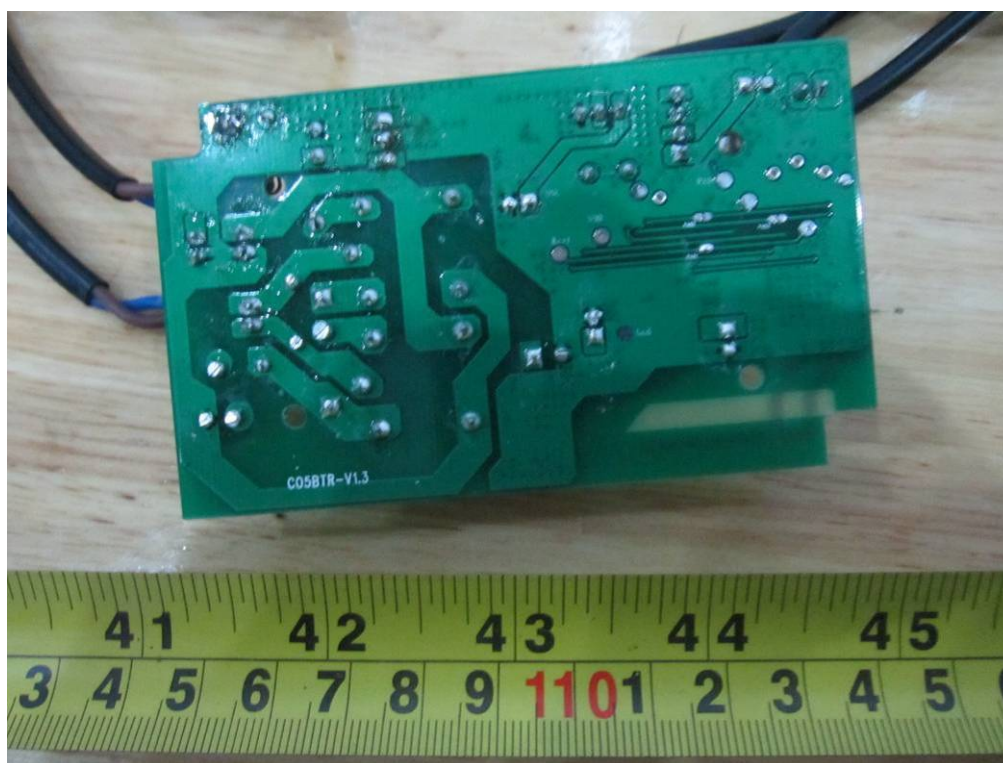
Annex B.ii. Photograph 2: EUT Internal Photo



iCtrl.M1P58-2– Uncover View



iCtrl. M1P58-2– Main Board Top View



iCtrl. M1P58-2– Main Board Bottom View



Lift Actuator– Uncover View



SIEMIC, INC.

Accessing global markets

Title: EMC Test Report for Bluetooth Control System
Main Model: iCtrl.M1P58
Serial Model: iCtrl.M1P5, iCtrl.M1P8, iCtrl.M1RP5, iCtrl.M1RP8
To: FCC Part 15 Subpart B Class B: 2013 , ANSI C63.4:2009

Report No.: 13020926-FCC-E1
Issue Date: May 19, 2014
Page: 45 of 76
www.siemic.com.cn



Lift Actuator - Motor View



Recline Actuator-- Uncover View



SIEMIC, INC.

Accessing global markets

Title: EMC Test Report for Bluetooth Control System
Main Model: iCtrl.M1P58
Serial Model: iCtrl.M1P5, iCtrl.M1P8, iCtrl.M1RP5, iCtrl.M1RP8
To: FCC Part 15 Subpart B Class B: 2013, ANSI C63.4:2009

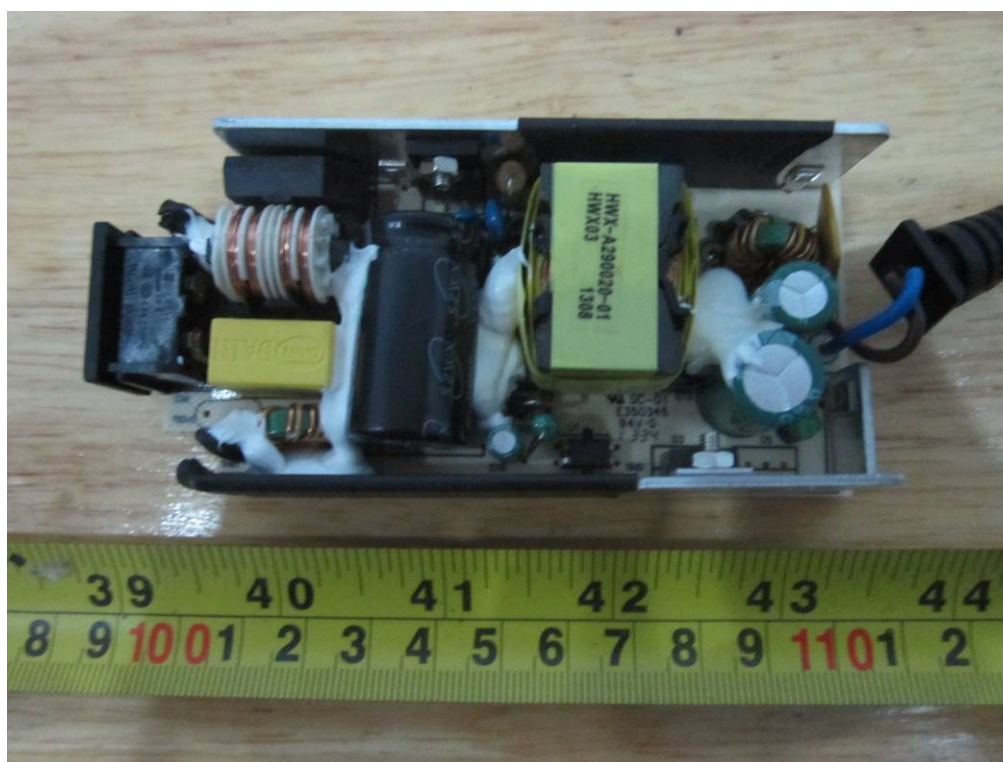
Report No.: 13020926-FCC-E1
Issue Date: May 19, 2014
Page: 46 of 76
www.siemic.com.cn



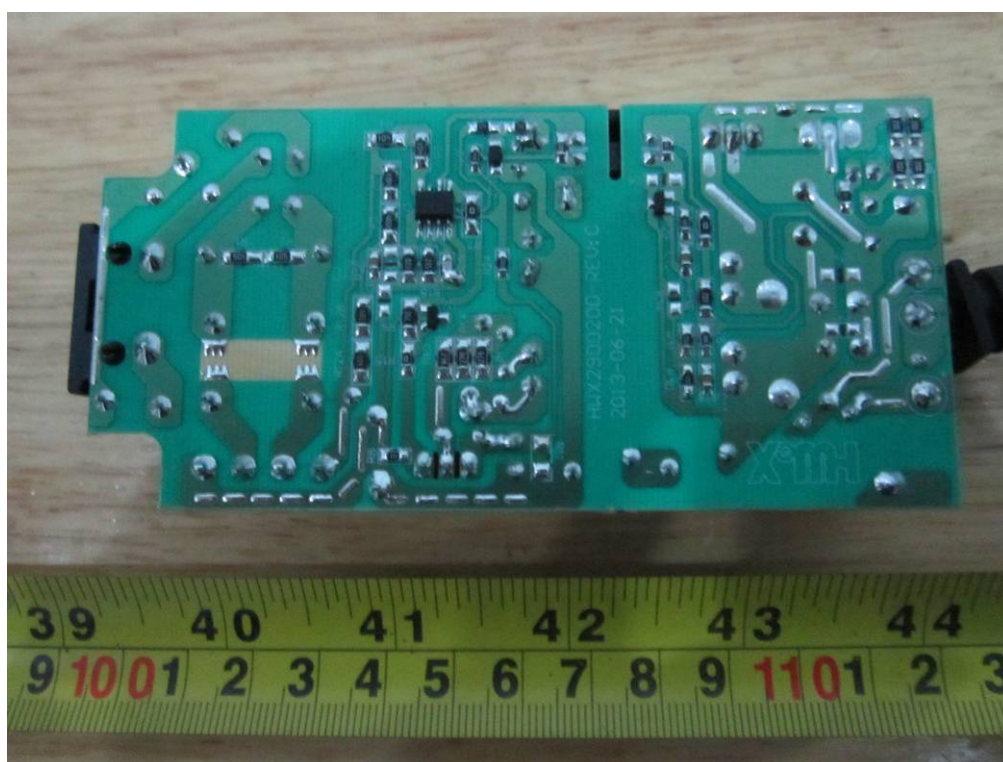
Recline Actuator- Motor View



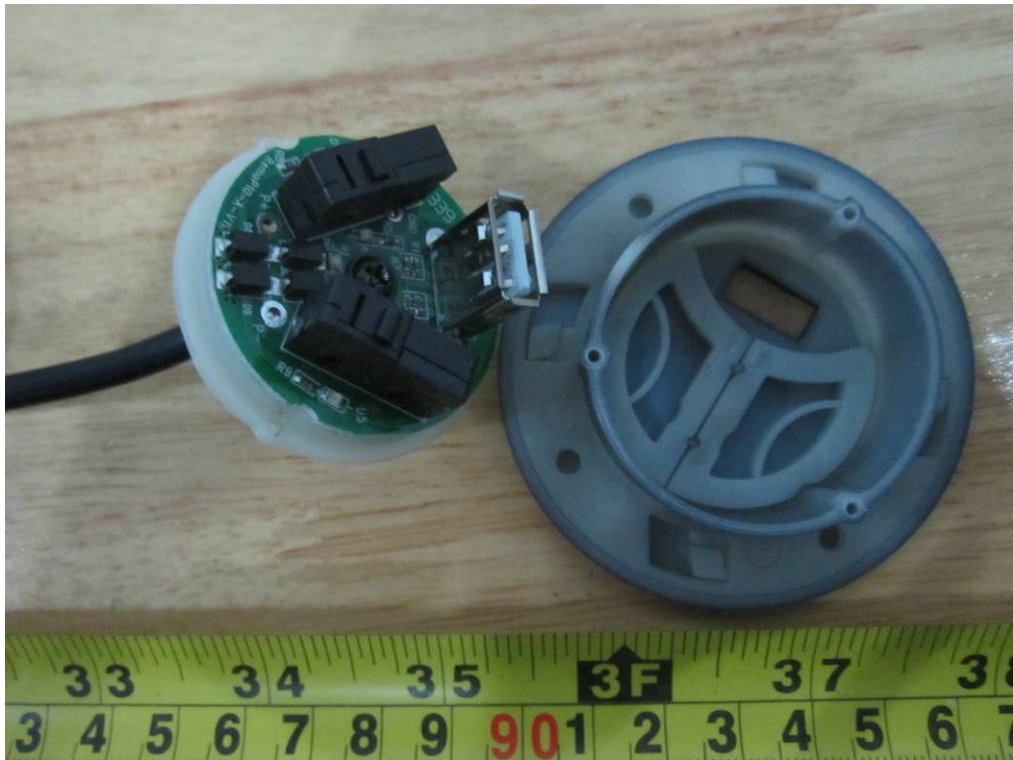
Adapter- Uncover View



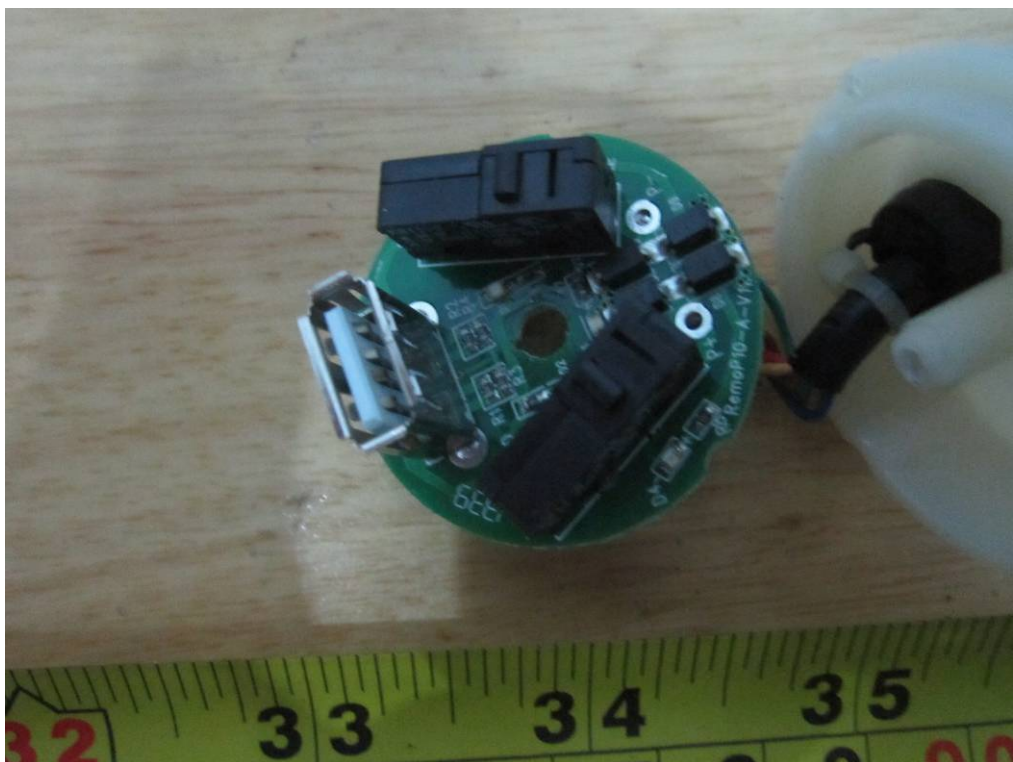
Adapter– Main Board Top View



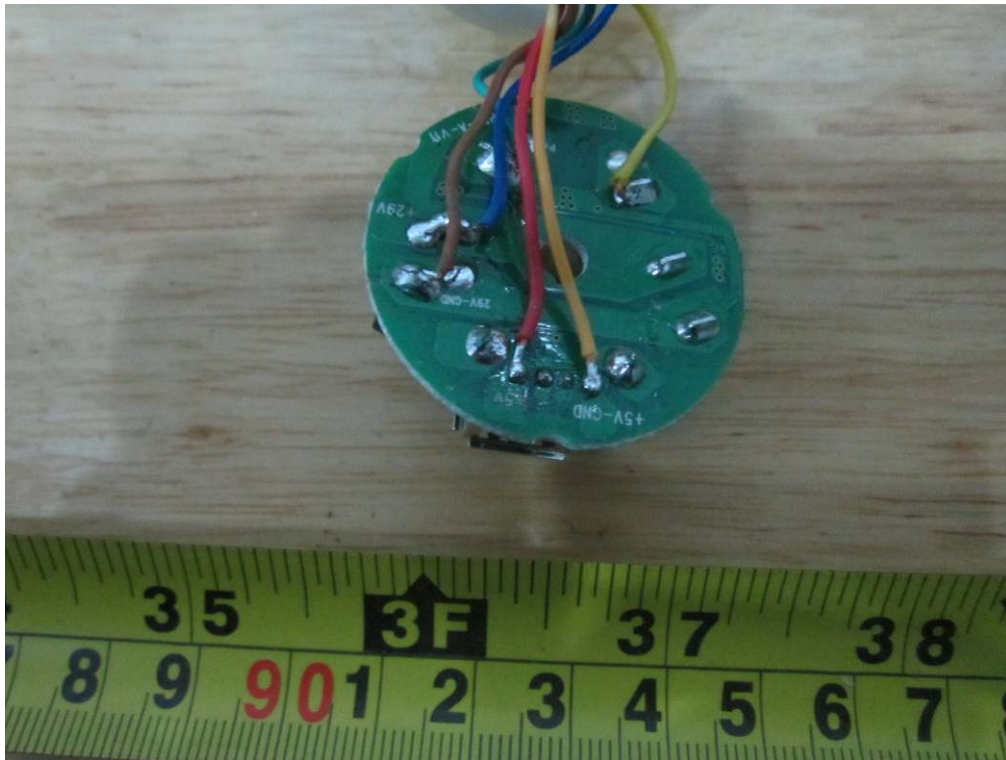
Adapter – Main Board Bottom View



RemoP20-Switch Box Uncover View



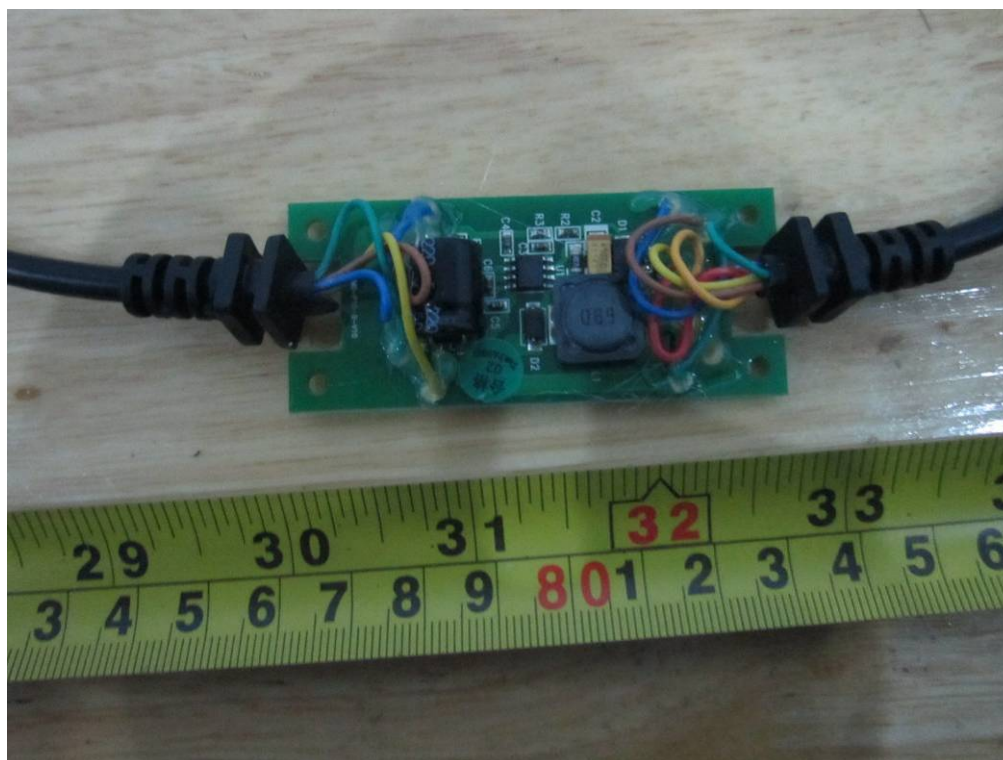
RemoP20-Switch Board Top View



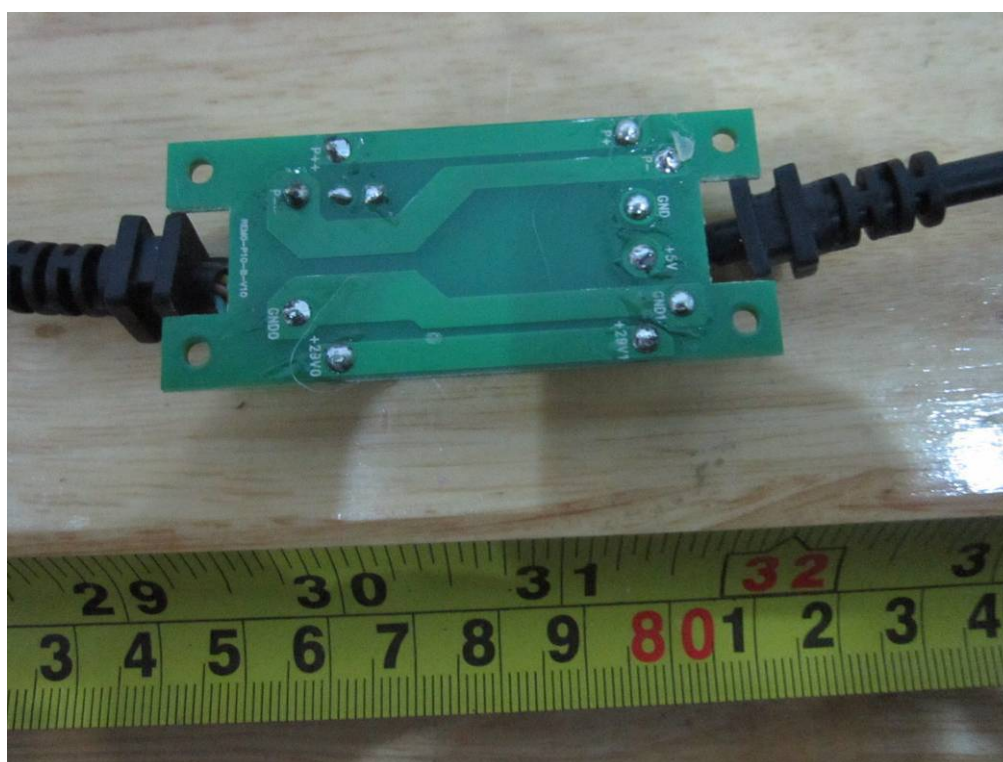
RemoP20-Switch Board Bottom View



RemoP20-Control Box Uncover View



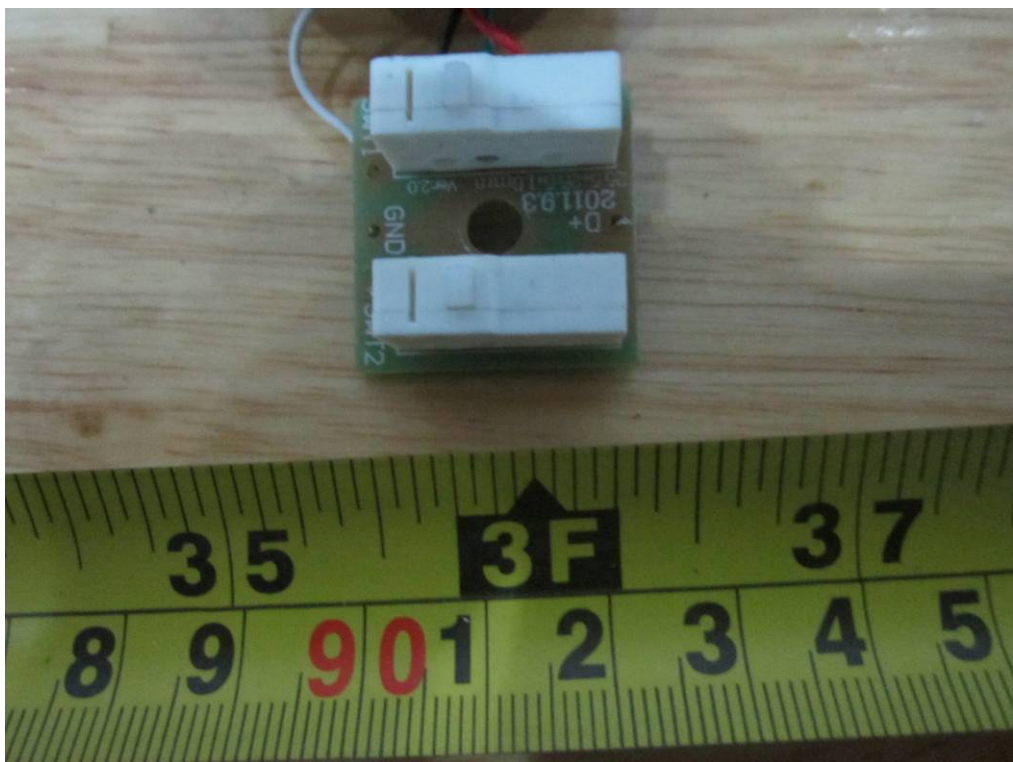
RemoP20-Control Board Top View



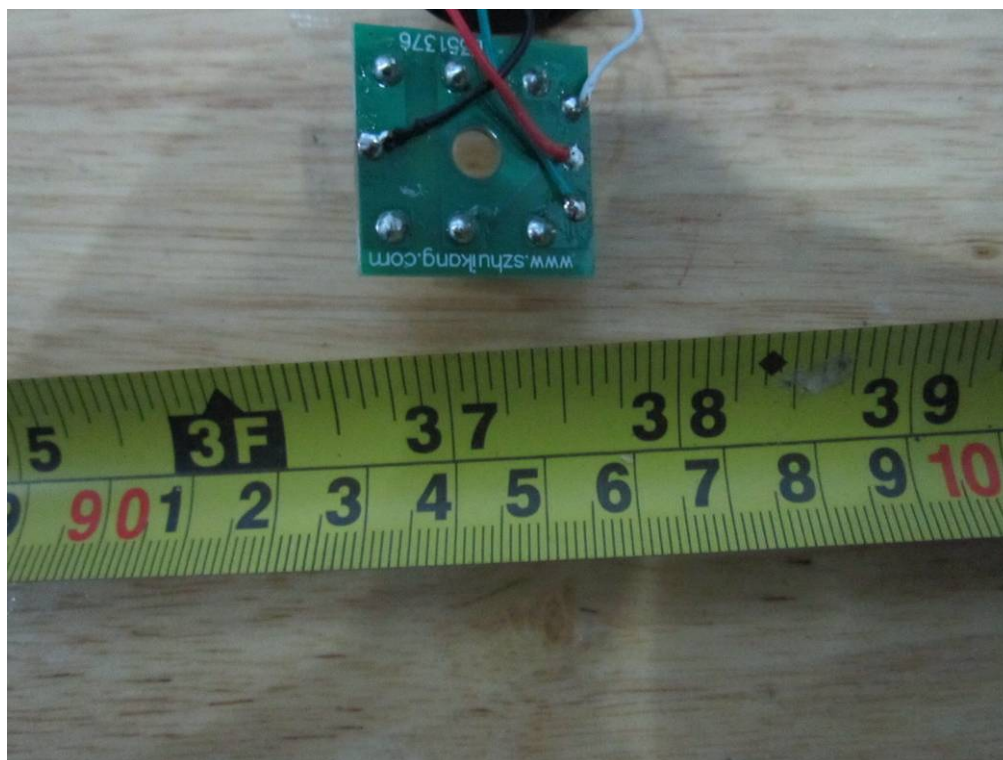
RemoP20 - Control Board Bottom View



HX35- UncoverView



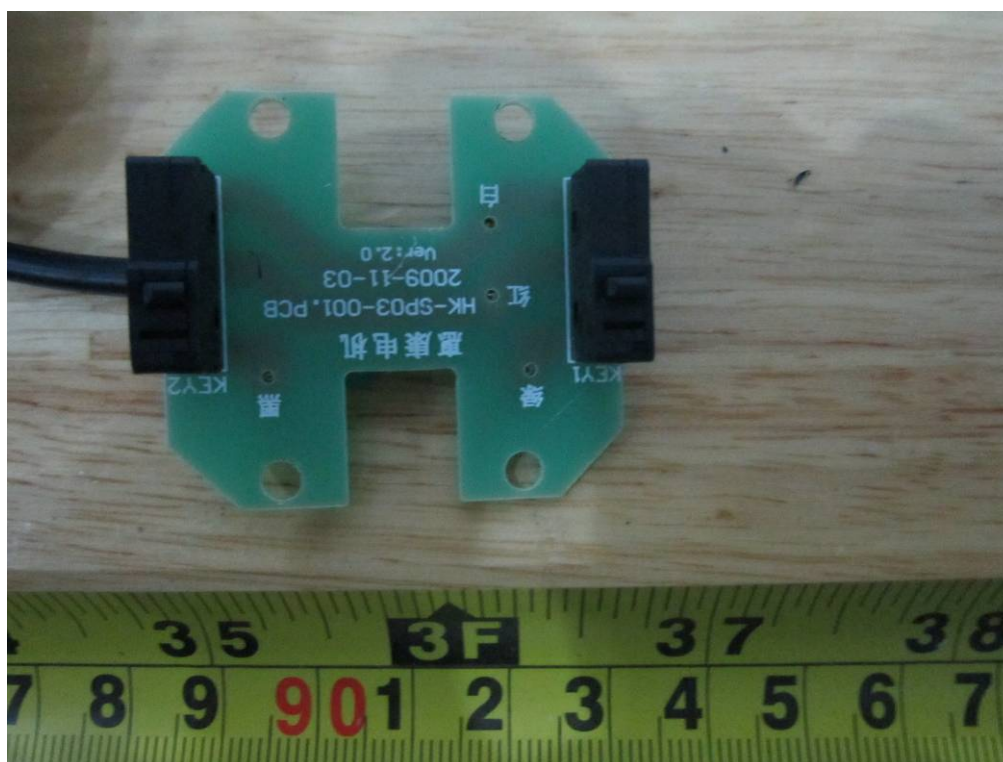
HX35 – Main Board Top View



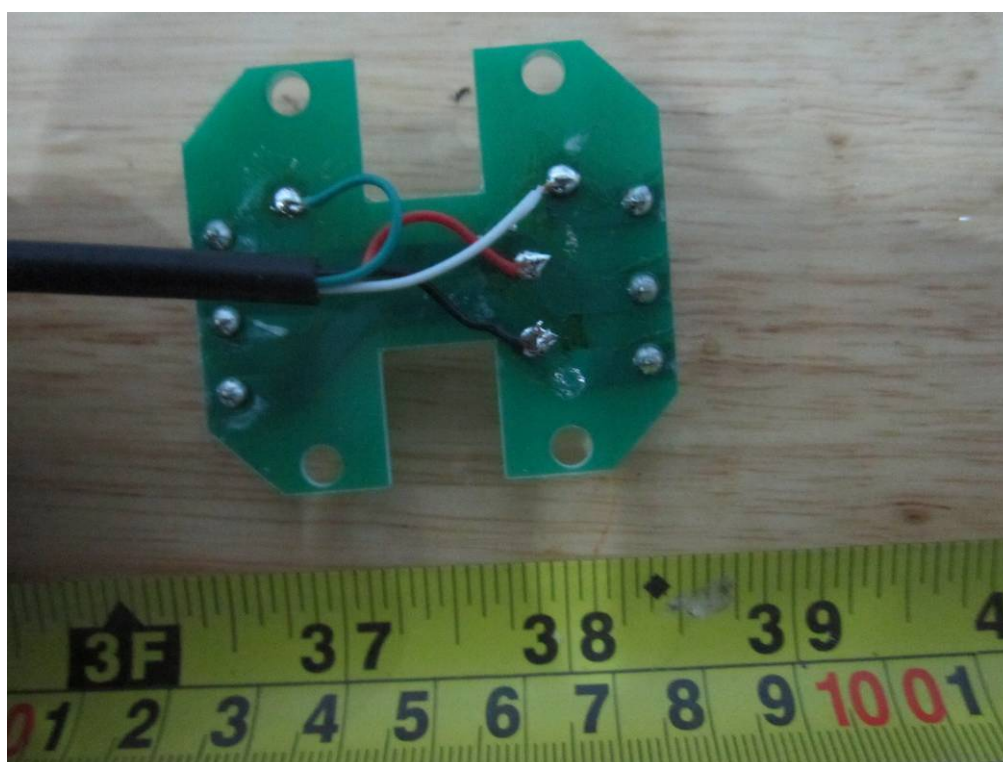
HX35– Main Board Bottom View



HX29- Uncover View



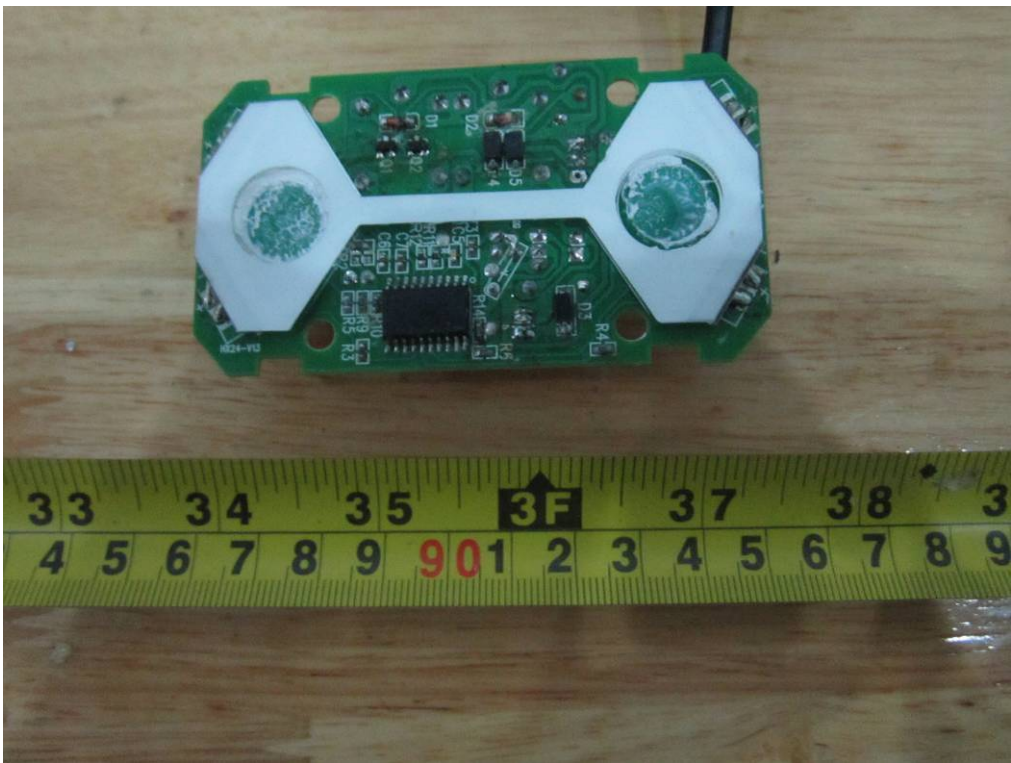
HX29– Main Board Top View



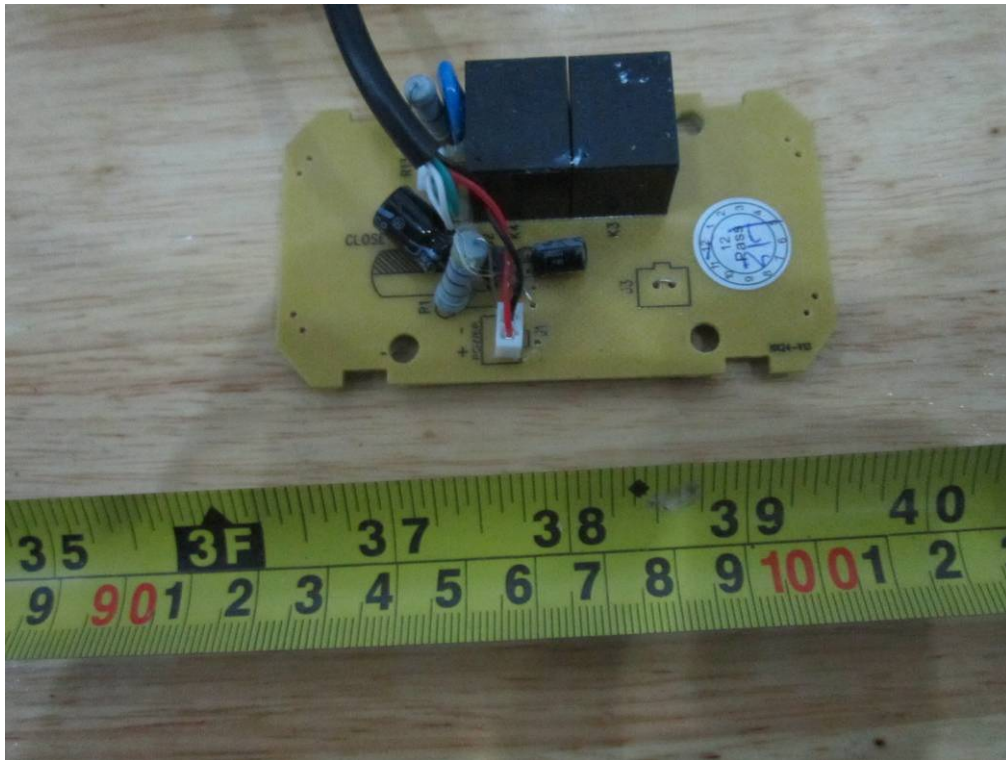
HX29– Main Board Bottom View



HX24- Uncover View



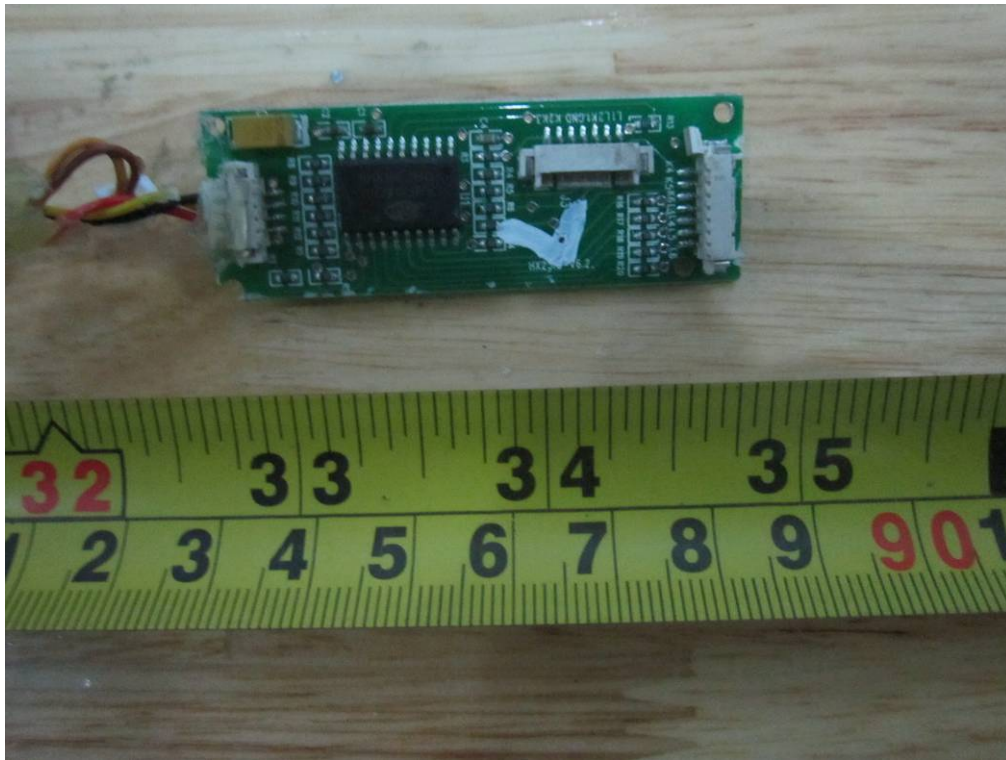
HX24- Main Board Top View



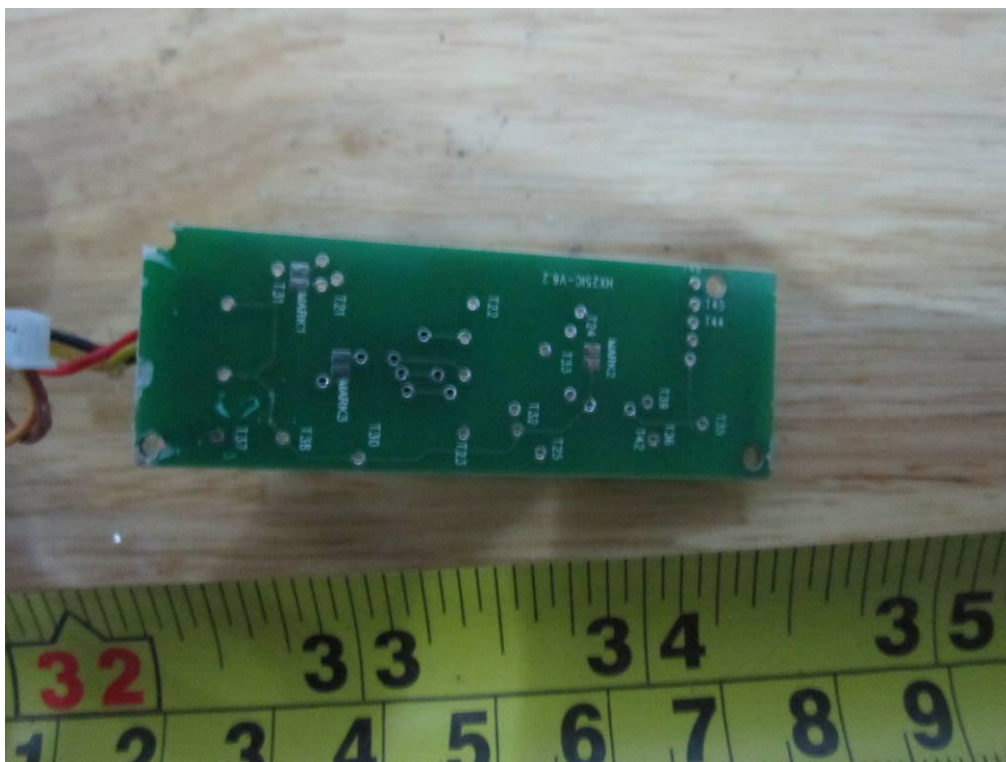
HX24– Main Board Bottom View



HX36H Uncover View



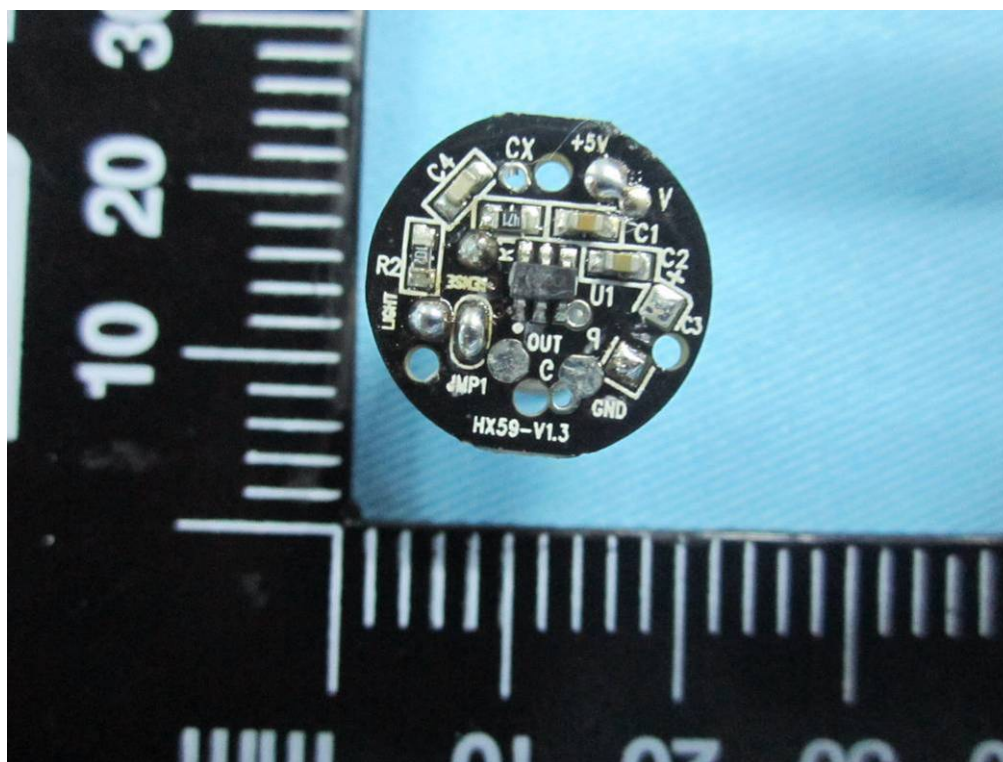
HX36H Main Board Top View



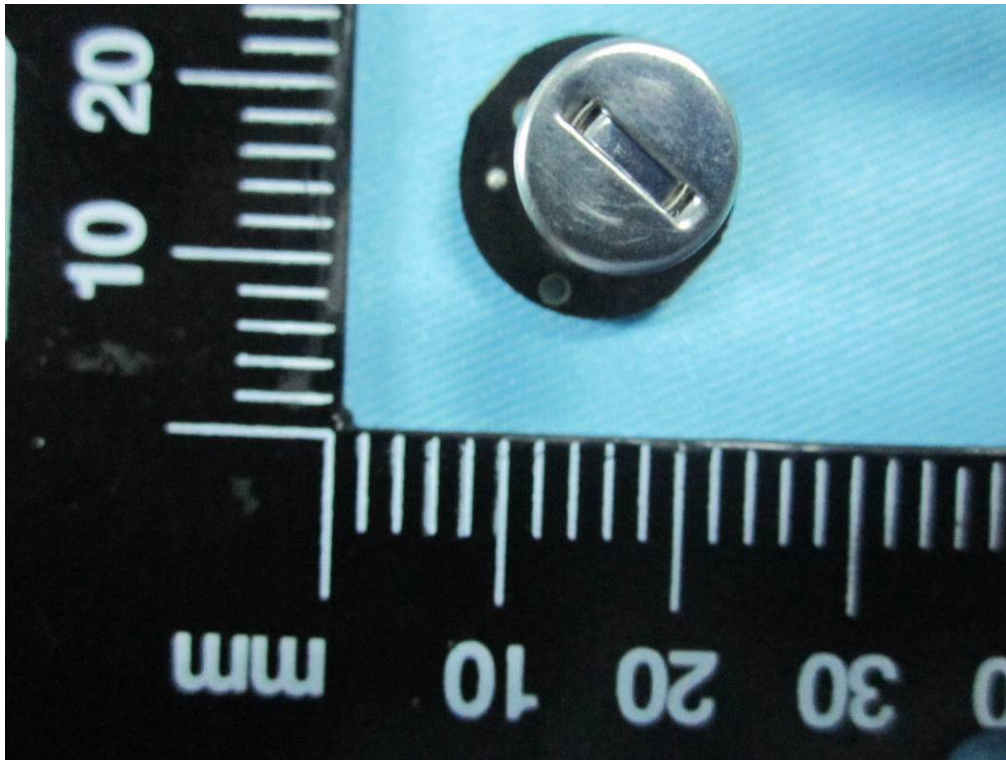
HX36H Main Board Bottom View



Remo Button- Uncover View



Remo Button- Main Board Top View

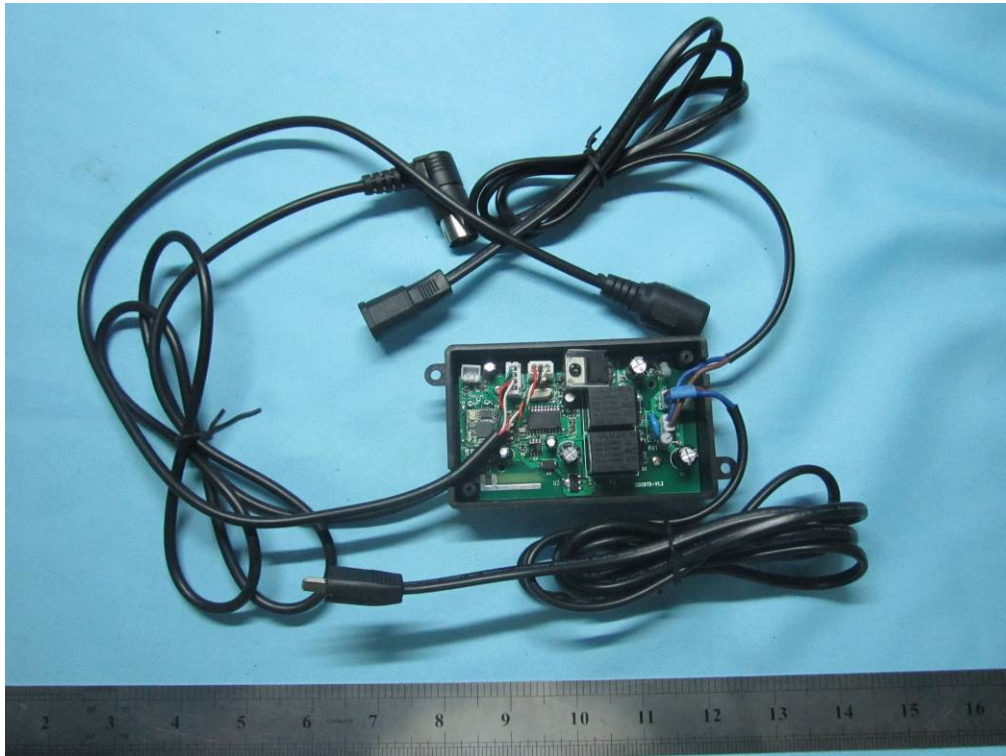


Remo Button– Main Board Bottom View

Annex B.iv. Photograph 4: EUT Internal Photo



iCtrl.M1P5-2– Uncover View



iCtrl.M1P8-2– Uncover View



iCtrl.M1RP5-2– Uncover View



iCtrl.M1RP8-2– Uncover View