

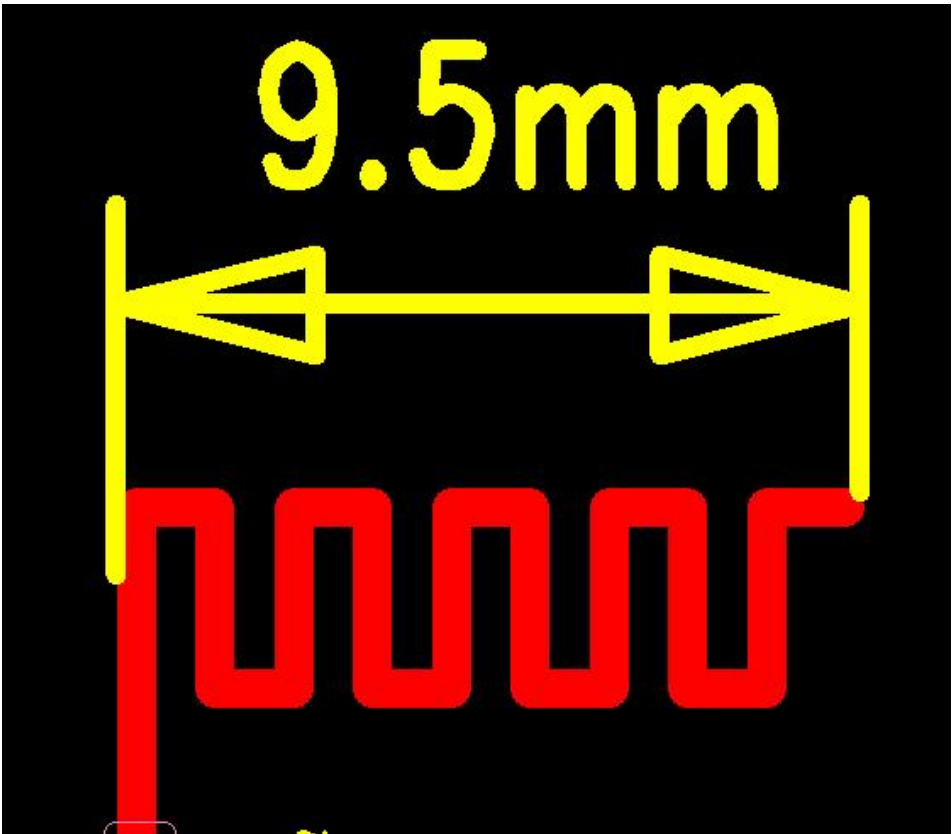
ANTENNA SPECIFICATION

Summary

ITEM	Dongle ANT SPEC		
Model Name	2.4G ANT		
Center Frequency	2405MHz	2430MHz	2470MHz
Gain(dBi)	-2.99	-2.37	-1.11
MAX. Gain	-1.11dBi		
Azimuth Beam Pattern	Omni-directional		
Impedance	50 Ohm		
Antenna Length	9.5mm		
Manufacture	DONGGUAN SHUO CHUANG ELECTRONICS CO LTD		

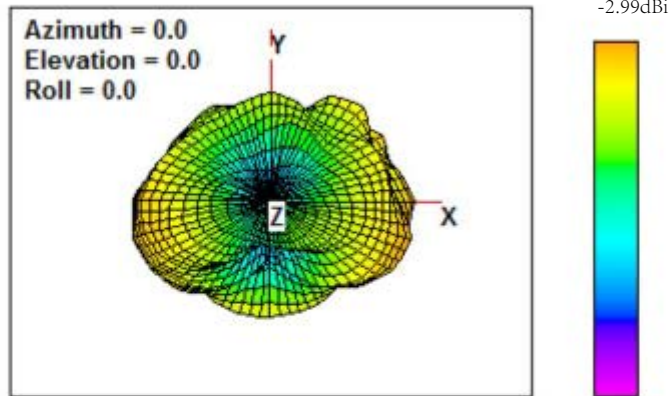
Address: Shijie Town,Dongguan City,Guangdong Province Development Industrial Park

Antenna Photo & Length (mm)



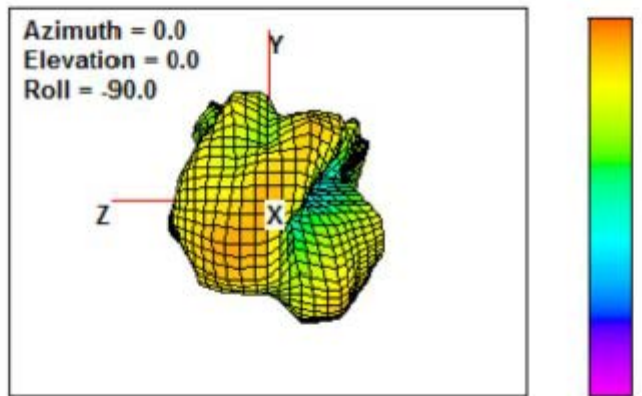
2405MHz

Total



2430MHz

Total



2470MHz

Total

