

TEST REPORT

Report No.	CISRR25041820103
Project No.	CISR250418201
FCC ID	2BG83-S3
Applicant	Dongguan Jinxu Electronics Co.,Ltd
Address	Room 101, Building 1, No. 3 Gaoyu North Road, Tangxia Town, Dongguan City, Guangdong Province
Manufacturer	Dongguan Jinxu Electronics Co.,Ltd
Address	Room 101, Building 1, No. 3 Gaoyu North Road, Tangxia Town, Dongguan City, Guangdong Province
Product Name	Wireless charging locator
Trademark	N/A
Model/Type reference	S3 Tag
Listed Model(s)	N/A
Standard	47 CFR Part 15.247
Test date	April 21, 2025 to April 23, 2025
Issue date	April 25, 2025
Test result	Complied

Lucas Huang

Prepared by: Lucas Huang

Genry Long

Approved by: Genry Long

The test results relate only to the tested samples.

The test report should not be reproduced except in full without the written approval of Shenzhen Bangce Testing Technology Co., Ltd.

Contents

1. REPORT VERSION	3
2. TEST DESCRIPTION	4
3. SUMMARY	5
3.1. Product Description *	5
3.2. Radio Specification Description *	5
3.3. Modification of EUT	5
3.4. Deviation from standards	5
3.5. Testing Site	5
4. TEST CONFIGURATION	7
4.1. Test frequency list	7
4.2. Descriptions of test mode	7
4.3. Support unit used in test configuration	7
4.4. Test sample information	7
4.5. Environmental conditions	7
4.6. Statement of the measurement uncertainty	8
4.7. Equipment Used during the Test	8
5. TEST RESULTS	10
5.1. Evaluation Results (Evaluation)	10
5.1.1. Antenna Requirement	10
5.2. Radio Spectrum Matter Test Results (RF)	11
5.2.1. Conducted Emission at AC power line	11
5.2.2. 20dB Bandwidth	14
5.2.3. Maximum Conducted Output Power	16
5.2.4. Channel Separation	17
5.2.5. Number of Hopping Frequencies	18
5.2.6. Dwell Time	19
5.2.7. Conducted band edge and spurious emission	21
5.2.8. Radiated band edge emission	23
5.2.9. Radiated Spurious Emission (below 1GHz)	29
5.2.10. Radiated Spurious Emission (Above 1GHz)	33
6. TEST SETUP PHOTOS	41
7. EXTERNAL AND INTERNAL PHOTOS	43
7.1. External Photos	43
7.2. Internal Photos	47

1. REPORT VERSION

Version No.	Issue date	Description
00	April 25, 2025	Original

2. TEST DESCRIPTION

No.	Test Item	Standard Requirement	Result
1	Antenna Requirement	47 CFR 15.203	Pass
2	Conducted Emission at AC power line	47 CFR 15.207(a)	Pass
3	20dB Bandwidth	47 CFR 15.247(a)(1)	Pass
4	Maximum Conducted Output Power	47 CFR 15.247(b)(1)	Pass
5	Channel Separation	47 CFR 15.247(a)(1)	Pass
6	Number of Hopping Frequencies	47 CFR 15.247(a)(1)(iii)	Pass
7	Dwell Time	47 CFR 15.247(a)(1)(iii)	Pass
8	Conducted band edge and spurious emission	47 CFR 15.247(d), 15.209, 15.205	Pass
9	Radiated band edge emission	47 CFR 15.247(d), 15.209, 15.205	Pass
10	Radiated Spurious Emission (below 1GHz)	47 CFR 15.247(d), 15.209, 15.205	Pass
11	Radiated Spurious Emission (Above 1GHz)	47 CFR 15.247(d), 15.209, 15.205	Pass

Note:

- The measurement uncertainty is not included in the test result.

3. SUMMARY

3.1. Product Description *

Main unit information:	
Product Name:	Wireless charging locator
Trade Mark:	N/A
Model No.:	S3
Listed Model(s):	N/A
Model difference:	N/A
Power supply:	Input: DC 5V
Hardware version:	N/A
Software version:	N/A
Accessory unit (AU) information:	
Battery information:	DC 3.7V

3.2. Radio Specification Description *

Modulation type:	GFSK
Operation frequency:	2402MHz to 2480MHz
Channel number:	79
Channel separation:	1MHz
Antenna type:	Chip Antenna
Antenna gain:	2.25dBi

Note:

- 1) *: Since the above information is provided by the applicant relevant results or conclusions of this report are only made for these information, Bangce is not responsible for the authenticity, integrity and results of the information and/or the validity of the conclusion.

3.3. Modification of EUT

No modifications are made to the EUT during all test items.

3.4. Deviation from standards

None

3.5. Testing Site

Laboratory Name	Shenzhen Bangce Testing Technology Co., Ltd.
Laboratory Location	101, building 10, Yunli Intelligent Park, Shutianpu community, Matian Street, Guangming District, Shenzhen, Guangdong, China
Contact information	Tel: 86-755-2319 6848, email: service@cis-cn.net Website: http://www.cis-cn.net/

FCC registration number	736346
FCC designation number	CN1372

4. TEST CONFIGURATION

4.1. Test frequency list

Lowest Channel (LCH) (MHz)	Middle Channel (MCH) (MHz)	Highest Channel (HCH) (MHz)
2402	2441	2480

4.2. Descriptions of test mode

No	Test mode	Description
TM1	TX-GFSK (Non-Hopping)	Keep the EUT in continuously transmitting mode (non-hopping) with GFSK modulation at lowest, middle and highest channel.
TM2	TX-GFSK (Hopping)	Keep the EUT in continuously transmitting mode (hopping) with GFSK modulation,.
TM3	Link mode	Keep the EUT in Bluetooth linking mode with AE.

4.3. Support unit used in test configuration

The EUT has been associated with peripherals and configuration operated in a manner tended to maximize its emission characteristics in a typical application.

The following peripheral devices and interface cables were connected during the measurement:

Item	Equipment name	Trade Name	Model No.
1	Adapter	Guangdong Sangu Technology Co. Ltd	SG-0501000AU
2	Phone	Huawei	NZONE S7

4.4. Test sample information

Type	Sample No.
Engineer sample	CISR250418201-S01
Normal sample	CISR250418201-S02

4.5. Environmental conditions

Type	Requirement
Temperature:	15~35°C
Relative Humidity:	25~75%
Air Pressure:	860~1060mbar

4.6. Statement of the measurement uncertainty

No.	Test Items	Measurement Uncertainty
1	AC Conducted Emission	1.63dB
2	Peak Output Power	1.34dB
3	Power Spectral Density	1.34dB
4	6dB Bandwidth	0.002%
5	Duty cycle	-
6	Conducted Band Edge and Spurious Emission	1.93dB
7	Radiated Band Edge Emission	3.76dB for 30MHz-1GHz 3.80dB for above 1GHz
8	Radiated Spurious Emission	3.76dB for 30MHz-1GHz 3.80dB for above 1GHz

This uncertainty represents an expanded uncertainty expressed at approximately the 95% confidence level using a coverage factor of $k=1.96$.

4.7. Equipment Used during the Test

Conducted Emission at AC power line						
Item	Equipment name	Manufacturer	Model	Serial No.	Calibration date	Due date
1	EMI Test Receiver	Rohde&schwarz	ESCi7	100853	2025-01-08	2026-01-07
2	Artificial power network	Schwarzbeck	NSLK8127	8127-01096	2025-01-08	2026-01-07
3	8-wire Impedance Stabilization Network	Schwarzbeck	NTFM 8158	8158-00337	2025-01-08	2026-01-07
4	Artificial power network	Schwarzbeck	ENV216	/	2025-01-08	2026-01-07

20dB Bandwidth Maximum Conducted Output Power Channel Separation Number of Hopping Frequencies Dwell Time Emissions in non-restricted frequency bands						
Item	Equipment name	Manufacturer	Model	Serial No.	Calibration date	Due date
1	MXG RF Signal Generator	Agilent	N5181A	MY50145362	2025-01-08	2026-01-07
2	Spectrum analyzer	R&S	FSV-40N	102130	2025-01-08	2026-01-07
3	Vector Signal Generator	Agilent	N5182A	MY50142364	2025-01-08	2026-01-07

Emissions in frequency bands (below 1GHz)
Emissions in frequency bands (above 1GHz)
Band edge emissions (Radiated)

Item	Equipment name	Manufacturer	Model	Serial No.	Calibration date	Due date
1	EMI Test Receiver	Rohde&schwarz	ESCI7	100853	2025-01-08	2026-01-07
2	Amplifier	Tonscend	TAP9K3G 40	AP23A806027 0	2025-01-08	2026-01-07
3	Prime amplifier	Tonscend	TAP0101 8050	AP23A806028 0	2025-01-08	2026-01-07
4	9*6*6 anechoic chamber	SKET	9.3*6.3*6	N/A	2024-09-02	2027-09-01
5	Spectrum analyzer	Agilent	N9020A	MY50530263	2025-01-08	2026-01-07
6	Spectrum analyzer	R&S	FSV-40N	102130	2025-01-08	2026-01-07
7	Bilog Antenna	Schwarzbeck	VULB 9163	1463	2023-01-09	2026-01-08
8	Horn Antenna	SCHWARZBECK	BBHA 9120 D	2487	2023-01-09	2026-01-08
9	Active Loop Antenna	SCHWARZBECK	FMZB 1519B	/	2023-01-09	2026-01-08
10	RF Cable	Tonscend	Cable 1	/	2025-01-08	2026-01-07
11	RF Cable	Tonscend	Cable 2	/	2025-01-08	2026-01-07
12	RF Cable	SKET	Cable 3	/	2025-01-08	2026-01-07
13	L.I.S.N.#1	Schwarzbeck	NSLK812 7	/	2025-01-08	2026-01-07
14	L.I.S.N.#2	ROHDE&SCHWARZ	ENV216	/	2025-01-08	2026-01-07
15	Horn Antenna	SCHWARZBECK	BBHA917 0	1130	2023-01-09	2026-01-08
16	Preamplifier	Tonscend	TAP1804 0048	AP21C806126	2025-01-08	2026-01-07
17	Variable-frequency power source	Pinhong	PH1110	/	2025-01-08	2026-01-07
18	6dB Attenuator	SKET	DC-6G	/	2025-01-08	2026-01-07
19	Antenna tower	SKT	Bk-4AT-BS	AT202104010 1-V1	2025-01-08	2026-01-07

5. TEST RESULTS

5.1. Evaluation Results (Evaluation)

5.1.1. Antenna Requirement

Test Requirement:	Refer to 47 CFR Part 15.203, an intentional radiator shall be designed to ensure that no antenna other than that furnished by the responsible party shall be used with the device. The use of a permanently attached antenna or of an antenna that uses a unique coupling to the intentional radiator shall be considered sufficient to comply with the provisions of this section.
--------------------------	---

5.1.1.1. Test Result

Pass

5.1.1.2. Conclusion:

The EUT antenna is Chip Antenna(2.25dBi), the directional gain of the antenna less than 6dBi. It comply with the standard requirement. In case of replacement of broken antenna the same antenna type must be used. Antenna structure please refer to the EUT internal photographs antenna photo.

5.2. Radio Spectrum Matter Test Results (RF)

5.2.1. Conducted Emission at AC power line

Test Requirement:	Refer to 47 CFR 15.207(a), Except as shown in paragraphs (b) and (c) of this section, for an intentional radiator that is designed to be connected to the public utility (AC) power line, the radio frequency voltage that is conducted back onto the AC power line on any frequency or frequencies, within the band 150 kHz to 30 MHz, shall not exceed the limits in the following table, as measured using a 50 μ H/50 ohms line impedance stabilization network (LISN).		
Test Limit:	Frequency of emission (MHz)	Conducted limit (dB μ V)	
		Quasi-peak	Average
	0.15-0.5	66 to 56*	56 to 46*
	0.5-5	56	46
	5-30	60	50
	*Decreases with the logarithm of the frequency.		
Test Method:	ANSI C63.10-2020 section 6.2		
Procedure:	<ol style="list-style-type: none"> 1. The EUT was setup according to ANSI C63.10 requirements. 2. The EUT was placed on a platform of nominal size, 1 m by 1.5 m, raised 80 cm above the conducting ground plane. The vertical conducting plane was located 40 cm to the rear of the EUT. All other surfaces of EUT were at least 80 cm from any other grounded conducting surface. 3. The EUT and simulators are connected to the main power through a line impedances stabilization network (LISN). The LISN provides a 50 ohm /50uH coupling impedance for the measuring equipment. 4. The peripheral devices are also connected to the main power through a LISN. (Refer to the block diagram of the test setup and photographs) 5. Each current-carrying conductor of the EUT power cord, except the ground (safety) conductor, was individually connected through a LISN to the input power source. 6. The excess length of the power cord between the EUT and the LISN receptacle were folded back and forth at the center of the lead to form a bundle not exceeding 40 cm in length. 7. Conducted emissions were investigated over the frequency range from 0.15MHz to 30MHz using a receiver bandwidth of 9 kHz. 8. During the above scans, the emissions were maximized by cable manipulation. 		

5.2.1.1. E.U.T. Operation

Operating Environment:					
Temperature:	22.9 °C	Humidity:	56.2 %	Atmospheric Pressure:	103 kPa
Pre test mode:	TM3				
Final test mode:	TM3				

5.2.1.2. Test Setup Diagram

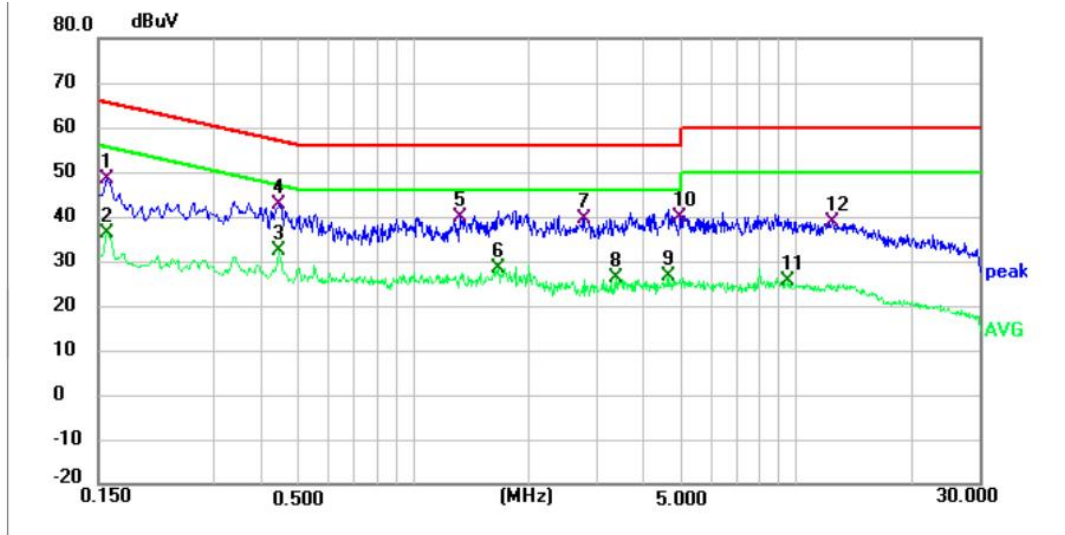


5.2.1.3. Test Result

Pass

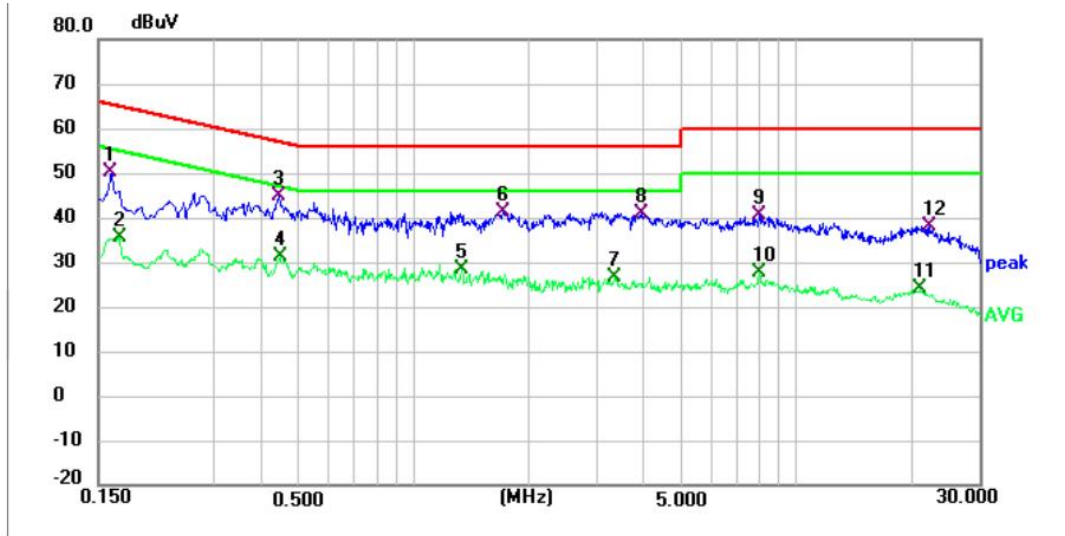
5.2.1.4. Test Data

Mode3 / Line: Line



No.	Frequency (MHz)	Reading (dBuV)	Factor (dB)	Level (dBuV)	Limit (dBuV)	Margin (dB)	Detector
1	0.158	37.99	10.27	48.26	65.57	-17.31	QP
2	0.158	26.12	10.27	36.39	55.57	-19.18	AVG
3	0.442	22.18	10.27	32.45	47.02	-14.57	AVG
4 *	0.444	32.35	10.27	42.62	56.99	-14.37	QP
5	1.330	29.41	10.47	39.88	56.00	-16.12	QP
6	1.670	17.82	10.55	28.37	46.00	-17.63	AVG
7	2.782	28.73	10.84	39.57	56.00	-16.43	QP
8	3.390	15.18	11.05	26.23	46.00	-19.77	AVG
9	4.626	14.94	11.52	26.46	46.00	-19.54	AVG
10	4.966	28.09	11.65	39.74	56.00	-16.26	QP
11	9.510	12.22	13.34	25.56	50.00	-24.44	AVG
12	12.434	23.93	14.73	38.66	60.00	-21.34	QP

Mode3 / Line: Neutral



No.	Frequency (MHz)	Reading (dBuV)	Factor (dB)	Level (dBuV)	Limit (dBuV)	Margin (dB)	Detector
1	0.162	39.77	10.28	50.05	65.36	-15.31	QP
2	0.170	25.25	10.27	35.52	54.96	-19.44	AVG
3 *	0.442	34.60	10.29	44.89	57.02	-12.13	QP
4	0.446	20.83	10.29	31.12	46.95	-15.83	AVG
5	1.338	17.88	10.47	28.35	46.00	-17.65	AVG
6	1.710	30.86	10.56	41.42	56.00	-14.58	QP
7	3.350	15.57	11.04	26.61	46.00	-19.39	AVG
8	3.926	29.77	11.27	41.04	56.00	-14.96	QP
9	7.998	27.65	12.94	40.59	60.00	-19.41	QP
10	7.998	14.91	12.94	27.85	50.00	-22.15	AVG
11	21.086	8.54	15.56	24.10	50.00	-25.90	AVG
12	22.282	22.67	15.41	38.08	60.00	-21.92	QP

Note:

- 1). Result = Reading +Correct (Insertion Loss + Cable Loss + Attenuator Factor)
- 2). Margin = Result - Limit

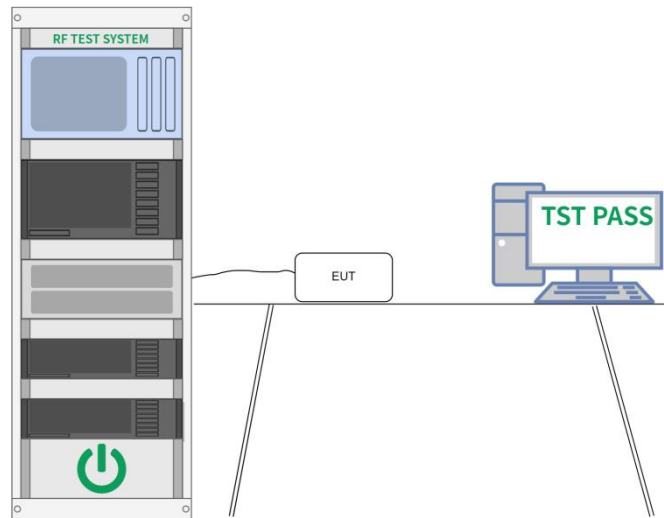
5.2.2. 20dB Bandwidth

Test Requirement:	47 CFR 15.247(a)(1)
Test Limit:	Refer to 47 CFR 15.215(c), intentional radiators operating under the alternative provisions to the general emission limits, as contained in §§ 15.217 through 15.257 and in subpart E of this part, must be designed to ensure that the 20 dB bandwidth of the emission, or whatever bandwidth may otherwise be specified in the specific rule section under which the equipment operates, is contained within the frequency band designated in the rule section under which the equipment is operated.
Test Method:	ANSI C63.10-2020, section 7.8.6, For occupied bandwidth measurements, use the procedure in 6.9.3. Frequency hopping shall be disabled for this test.
Procedure:	<p>The occupied bandwidth is the frequency bandwidth such that, below its lower and above its upper frequency limits, the mean powers are each equal to 0.5% of the total mean power of the given emission. The following procedure shall be used for measuring 99% power bandwidth:</p> <p>a) The instrument center frequency is set to the nominal EUT channel center frequency. The frequency span for the spectrum analyzer shall be between 1.5 times and 5.0 times the OBW.</p> <p>b) The nominal IF filter bandwidth (3 dB RBW) shall be in the range of 1% to 5% of the OBW, and VBW shall be at least three times the RBW, unless otherwise specified by the applicable requirement.</p> <p>c) Set the reference level of the instrument as required, keeping the signal from exceeding the maximum input mixer level for linear operation. In general, the peak of the spectral envelope shall be more than $[10 \log (OBW/RBW)]$ below the reference level. Specific guidance is given in 4.1.6.2.</p> <p>d) Step a) through step c) might require iteration to adjust within the specified range.</p> <p>e) Video averaging is not permitted. Where practical, a sample detection and single sweep mode shall be used. Otherwise, peak detection and max-hold mode (until the trace stabilizes) shall be used.</p> <p>f) Use the 99% power bandwidth function of the instrument (if available) and report the measured bandwidth.</p> <p>g) If the instrument does not have a 99% power bandwidth function, then the trace data points are recovered and directly summed in linear power terms. The recovered amplitude data points, beginning at the lowest frequency, are placed in a running sum until 0.5% of the total is reached; that frequency is recorded as the lower frequency. The process is repeated until 99.5% of the total is reached; that frequency is recorded as the upper frequency. The 99% power bandwidth is the difference between these two frequencies.</p> <p>h) The occupied bandwidth shall be reported by providing spectral plot(s) of the measuring instrument display; the plot axes and the scale units per division shall be clearly labeled. Tabular data may be reported in addition to the plot(s).</p>

5.2.2.1. E.U.T. Operation

Operating Environment:					
Temperature:	22.1 °C	Humidity:	55.9 %	Atmospheric Pressure:	102 kPa
Pre test mode:	TM1				
Final test mode:	TM1				

5.2.2.2. Test Setup Diagram



5.2.2.3. Test Result

Pass

5.2.2.4. Test Data

Please Refer to Appendix for Details.

5.2.3. Maximum Conducted Output Power

Test Requirement:	47 CFR 15.247(b)(1)
Test Limit:	Refer to 47 CFR 15.247(b)(1), For frequency hopping systems operating in the 2400-2483.5 MHz band employing at least 75 non-overlapping hopping channels, and all frequency hopping systems in the 5725-5850 MHz band: 1 watt. For all other frequency hopping systems in the 2400-2483.5 MHz band: 0.125 watts.
Test Method:	ANSI C63.10-2020, section 7.8.5
Procedure:	<p>This is an RF-conducted test to evaluate maximum peak output power. Use a direct connection between the antenna port of the unlicensed wireless device and the spectrum analyzer, through suitable attenuation. Frequency hopping shall be disabled for this test. Use the following spectrum analyzer settings:</p> <ul style="list-style-type: none"> a) Span: Approximately five times the 20 dB bandwidth, centered on a hopping channel. b) RBW > 20 dB bandwidth of the emission being measured. c) VBW ≥ RBW. d) Sweep: No faster than coupled (auto) time. e) Detector function: Peak. f) Trace: Max-hold. g) Allow trace to stabilize. h) Use the marker-to-peak function to set the marker to the peak of the emission. i) The indicated level is the peak output power, after any corrections for external attenuators and cables. j) A spectral plot of the test results and setup description shall be included in the test report. <p>NOTE—A peak responding power meter may be used, where the power meter and sensor system video bandwidth is greater than the occupied bandwidth of the unlicensed wireless device, rather than a spectrum analyzer.</p>

5.2.3.1. E.U.T. Operation

Operating Environment:					
Temperature:	22.1 °C	Humidity:	55.9 %	Atmospheric Pressure:	102 kPa
Pre test mode:	TM1				
Final test mode:	TM1				

5.2.3.2. Test Setup Diagram



5.2.3.3. Test Result

Pass

5.2.3.4. Test Data

Please Refer to Appendix for Details.

5.2.4. Channel Separation

Test Requirement:	47 CFR 15.247(a)(1)
Test Limit:	Refer to 47 CFR 15.247(a)(1), Frequency hopping systems shall have hopping channel carrier frequencies separated by a minimum of 25 kHz or the 20 dB bandwidth of the hopping channel, whichever is greater. Alternatively, frequency hopping systems operating in the 2400-2483.5 MHz band may have hopping channel carrier frequencies that are separated by 25 kHz or two-thirds of the 20 dB bandwidth of the hopping channel, whichever is greater, provided the systems operate with an output power no greater than 125 mW.
Test Method:	ANSI C63.10-2020, section 7.8.2
Procedure:	<p>The EUT shall have its hopping function enabled. Use the following spectrum analyzer settings:</p> <ul style="list-style-type: none"> a) Span: Wide enough to capture the peaks of two adjacent channels. b) RBW: Start with the RBW set to approximately 30% of the channel spacing; adjust as necessary to best identify the center of each individual channel. c) Video (or average) bandwidth (VBW) \geq RBW. d) Sweep: No faster than coupled (auto) time. e) Detector function: Peak. f) Trace: Max-hold. g) Allow the trace to stabilize. <p>Use the marker-delta function to determine the separation between the peaks of the adjacent channels. Compliance of an EUT with the appropriate regulatory limit shall be determined. A spectral plot of the data shall be included in the test report.</p>

5.2.4.1. E.U.T. Operation

Operating Environment:					
Temperature:	22.1 °C	Humidity:	55.9 %	Atmospheric Pressure:	102 kPa
Pre test mode:	TM2				
Final test mode:	TM2				

5.2.4.2. Test Setup Diagram



5.2.4.3. Test Result

Pass

5.2.4.4. Test Data

Please Refer to Appendix for Details.

5.2.5. Number of Hopping Frequencies

Test Requirement:	47 CFR 15.247(a)(1)(iii)
Test Limit:	Refer to 47 CFR 15.247(a)(1)(iii), Frequency hopping systems in the 2400-2483.5 MHz band shall use at least 15 channels. The average time of occupancy on any channel shall not be greater than 0.4 seconds within a period of 0.4 seconds multiplied by the number of hopping channels employed. Frequency hopping systems may avoid or suppress transmissions on a particular hopping frequency provided that a minimum of 15 channels are used.
Test Method:	ANSI C63.10-2020, section 7.8.3
Procedure:	<p>The EUT shall have its hopping function enabled. Use the following spectrum analyzer settings:</p> <ul style="list-style-type: none"> a) Span: The frequency band of operation. Depending on the number of channels the device supports, it could be necessary to divide the frequency range of operation across multiple spans, to allow the individual channels to be clearly seen. b) RBW: To identify clearly the individual channels, set the RBW to less than 30% of the channel spacing or the 20 dB bandwidth, whichever is smaller. c) VBW \geq RBW. d) Sweep: No faster than coupled (auto) time. e) Detector function: Peak. f) Trace: Max-hold. g) Allow the trace to stabilize. <p>It might prove necessary to break the span up into subranges to show clearly all of the hopping frequencies. Compliance of an EUT with the appropriate regulatory limit shall be determined for the number of hopping channels. A spectral plot of the data shall be included in the test report.</p>

5.2.5.1. E.U.T. Operation

Operating Environment:					
Temperature:	22.1 °C	Humidity:	55.9 %	Atmospheric Pressure:	102 kPa
Pre test mode:	TM2				
Final test mode:	TM2				

5.2.5.2. Test Setup Diagram



5.2.5.3. Test Result

Pass

5.2.5.4. Test Data

Please Refer to Appendix for Details.

5.2.6. Dwell Time

Test Requirement:	47 CFR 15.247(a)(1)(iii)
Test Limit:	Refer to 47 CFR 15.247(a)(1)(iii), Frequency hopping systems in the 2400-2483.5 MHz band shall use at least 15 channels. The average time of occupancy on any channel shall not be greater than 0.4 seconds within a period of 0.4 seconds multiplied by the number of hopping channels employed. Frequency hopping systems may avoid or suppress transmissions on a particular hopping frequency provided that a minimum of 15 channels are used.
Test Method:	ANSI C63.10-2020, section 7.8.4
Procedure:	<p>The dwell time per hop on a channel is the time from the start of the first transmission to the end of the last transmission for that hop. If the device has a single transmission per hop then the dwell time is the duration of that transmission. If the device has a multiple transmissions per hop then the dwell time is measured from the start of the first transmission to the end of the last transmission.</p> <p>The time of occupancy is the total time that the device dwells on a channel over an observation period specified in the regulatory requirement. To determine the time of occupancy the spectrum analyzer will be configured to measure both the dwell time per hop and the number of times the device transmits on a specific channel in a given period.</p> <p>The EUT shall have its hopping function enabled. Compliance with the requirements shall be made with the minimum and with the maximum number of channels enabled. If the dwell time per channel does not vary with the number of channels then compliance with the requirements may be based on the minimum number of channels. If the device supports different dwell times per channel (example Bluetooth devices can dwell on a channel for 1, 3 or 5 time slots) then measurements can be limited to the longest dwell time with the minimum number of channels.</p> <p>Use the following spectrum analyzer settings to determine the dwell time per hop:</p> <ol style="list-style-type: none"> Span: Zero span, centered on a hopping channel. RBW shall be \leq channel spacing and where possible RBW should be set $\gg 1/T$, where T is the expected transmission time per hop. Sweep time: Set so that the start of the first transmission and end of the last transmission for the hop are clearly captured. Setting the sweep time to be slightly longer than the hopping period per channel (hopping period = $1/\text{hopping rate}$) should achieve this. Use a video trigger, where possible with a trigger delay, so that the start of the transmission is clearly observed. The trigger level might need adjustment to reduce the chance of triggering when the system hops on an adjacent channel. Detector function: Peak. Trace: Clear-write, single sweep. Place markers at the start of the first transmission on the channel and at the end of the last transmission. The dwell time per hop is the time between these two markers. <p>To determine the number of hops on a channel in the regulatory observation period repeat the measurement using a longer sweep time. When the device uses a single hopping sequence the period of measurement should be sufficient to capture at least 2 hops. When the device uses a dynamic hopping sequence, or the sequence varies, the period of measurement may need to capture multiple hops to better determine the average time of occupancy. Count the number of hops on the channel across the sweep time.</p> <p>The average number of hops on the same channel within the regulatory observation period is calculated from the number of hops on the channel divided by the spectrum analyzer sweep time multiplied by the regulatory observation period. For example, if three hops are counted with an analyzer sweep time of 500 ms and</p>

	<p>the regulatory observation period is 10 s, then the number of hops in that ten seconds is $3 / 0.5 \times 10$, or 60 hops.</p> <p>The average time of occupancy is calculated by multiplying the dwell time per hop by the number of hops in the observation period.</p>
--	--

5.2.6.1. E.U.T. Operation

Operating Environment:					
Temperature:	22.1 °C	Humidity:	55.9 %	Atmospheric Pressure:	102 kPa
Pre test mode:	TM2				
Final test mode:	TM2				

5.2.6.2. Test Setup Diagram



5.2.6.3. Test Result

Pass

5.2.6.4. Test Data

Please Refer to Appendix for Details.

5.2.7. Conducted band edge and spurious emission

Test Requirement:	47 CFR 15.247(d), 15.209, 15.205
Test Limit:	Refer to 47 CFR 15.247(d), In any 100 kHz bandwidth outside the frequency band in which the spread spectrum or digitally modulated intentional radiator is operating, the radio frequency power that is produced by the intentional radiator shall be at least 20 dB below that in the 100 kHz bandwidth within the band that contains the highest level of the desired power, based on either an RF conducted or a radiated measurement, provided the transmitter demonstrates compliance with the peak conducted power limits. If the transmitter complies with the conducted power limits based on the use of RMS averaging over a time interval, as permitted under paragraph (b)(3) of this section, the attenuation required under this paragraph shall be 30 dB instead of 20 dB. Attenuation below the general limits specified in § 15.209(a) is not required.
Test Method:	ANSI C63.10-2020 section 7.8.7
Procedure:	<p>7.8.7.1 General considerations To demonstrate compliance with the relative out-of-band emissions requirements conducted spurious emissions shall be measured for the transmit frequencies, per 5.5 and 5.6, and at the maximum transmit powers. Frequency hopping shall be disabled for this test with the exception of measurements at the allocated band-edges which shall be repeated with hopping enabled.</p> <p>Connect the primary antenna port through an attenuator to the spectrum analyzer input; in the results, account for all losses between the unlicensed wireless device output and the spectrum analyzer. The frequency range of testing shall span 30 MHz to 10 times the operating frequency and this may be done in a single sweep or, to aid resolution, across a number of sweeps. The resolution bandwidth shall be 100 kHz, video bandwidth 300 kHz, and a coupled sweep time with a peak detector.</p> <p>The limit is based on the highest in-band level across all channels measured using the same instrument settings (resolution bandwidth of 100 kHz, video bandwidth of 300 kHz, and a coupled sweep time with a peak detector). To help clearly demonstrate compliance a display line may be set at the required offset (typically 20 dB) below the highest in-band level. Where the highest in-band level is not clearly identified in the out-of-band measurements a separate spectral plot showing the in-band level shall be provided.</p> <p>When conducted measurements cannot be made (for example a device with integrated, non-removable antenna) radiated measurements shall be used. The reference level for determining the limit shall be established by maximizing the field strength from the highest power channel and measuring using the resolution and video bandwidth settings and peak detector as described above. The field strength limit for spurious emissions outside of restricted-bands shall then be set at the required offset (typically 20 dB) below the highest in-band level. Radiated measurements will follow the standards measurement procedures described in Clause 6 with the exception that the resolution bandwidth shall be 100 kHz, video bandwidth 300 kHz, and a coupled sweep time with a peak detector. Note that use of wider measurement bandwidths are acceptable for measuring the spurious emissions provided that the peak detector is used and that the measured value of spurious emissions are compared to the highest in-band level measured with the 100 kHz / 300 kHz bandwidth settings to determine compliance.</p> <p>7.8.7.2 Band-edges Compliance with a relative limit at the band-edges (e.g., -20 dBc) shall be made on the lowest and on the highest channels with frequency hopping disabled and repeated with frequency hopping enabled. For the latter test the hopping sequence shall include the lowest and highest channels.</p> <p>For measurements with the hopping disabled the analyzer screen shall clearly show compliance with the requirement within 10 MHz of the allocated band-edge.</p>

For measurements with the hopping enabled the analyzer screen shall clearly show compliance with the requirement within 10 MHz of both of the allocated band-edges. This could require separate spectral plots for each band-edge.

5.2.7.1. E.U.T. Operation

Operating Environment:					
Temperature:	22.1 °C	Humidity:	55.9 %	Atmospheric Pressure:	102 kPa
Pre test mode:	TM1, TM2				
Final test mode:	TM1, TM2				

5.2.7.2. Test Setup Diagram



5.2.7.3. Test Result

Pass

5.2.7.4. Test Data

Please Refer to Appendix for Details.

5.2.8. Radiated band edge emission

Test Requirement:	Refer to 47 CFR 15.247(d), In addition, radiated emissions which fall in the restricted bands, as defined in § 15.205(a), must also comply with the radiated emission limits specified in § 15.209(a)(see § 15.205(c)).`		
Test Limit:	Frequency (MHz)	Field strength (microvolts/meter)	Measurement distance (meters)
	0.009-0.490	2400/F(kHz)	300
	0.490-1.705	24000/F(kHz)	30
	1.705-30.0	30	30
	30-88	100 **	3
	88-216	150 **	3
	216-960	200 **	3
	Above 960	500	3
<p>** Except as provided in paragraph (g), fundamental emissions from intentional radiators operating under this section shall not be located in the frequency bands 54-72 MHz, 76-88 MHz, 174-216 MHz or 470-806 MHz. However, operation within these frequency bands is permitted under other sections of this part, e.g., §§ 15.231 and 15.241.</p> <p>In the emission table above, the tighter limit applies at the band edges.</p> <p>The emission limits shown in the above table are based on measurements employing a CISPR quasi-peak detector except for the frequency bands 9–90 kHz, 110–490 kHz and above 1000 MHz. Radiated emission limits in these three bands are based on measurements employing an average detector.</p>			
Test Method:	ANSI C63.10-2020 section 6.10		
Procedure:	<p>1. EUT was setup and tested according to ANSI C63.10 .</p> <p>2. The EUT is placed on a turn table which is 1.5 meter above ground. The turn table is rotated 360 degrees to determine the position of the maximum emission level.</p> <p>3. The EUT was positioned such that the distance from antenna to the EUT was 3 meters.</p> <p>4. The antenna is scanned from 1 meter to 4 meters to find out the maximum emission level. This is repeated for both horizontal and vertical polarization of the antenna. In order to find the maximum emission, all of the interface cables were manipulated according to ANSI C63.10 on radiated measurement.</p> <p>5. Use the following spectrum analyzer settings:</p> <p>a) Span shall wide enough to fully capture the emission being measured</p> <p>b) Set RBW=1MHz, VBW=3MHz for >1GHz, Sweep time=auto, Detector=peak, Trace=max hold for Peak measurement</p> <p>For average measurement: use duty cycle correction factor method (DCCF), Averager level = Peak level + DCCF</p>		

5.2.8.1. E.U.T. Operation

Operating Environment:					
Temperature:	22.9 °C	Humidity:	55.1 %	Atmospheric Pressure:	102 kPa
Pre test mode:	TM1				
Final test mode:	TM1				

5.2.8.2. Test Setup Diagram

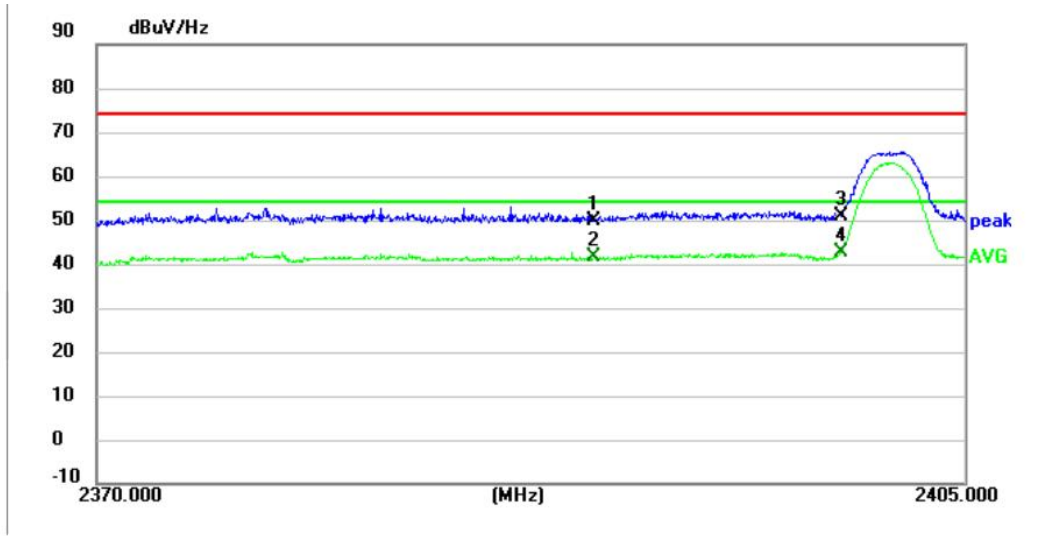


5.2.8.3. Test Result

Pass

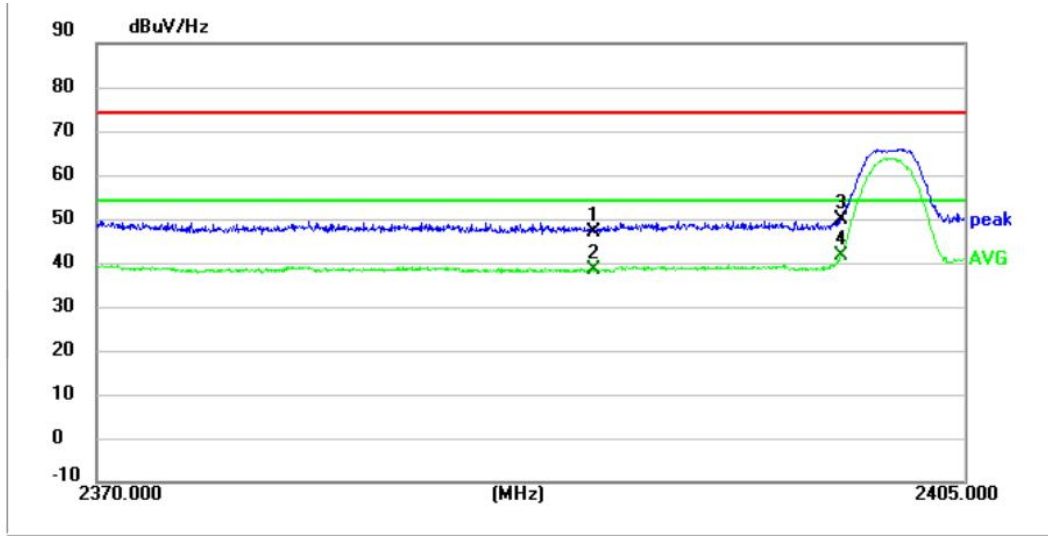
5.2.8.4. Test Data

Mode1 / Polarization: Horizontal / CH: L



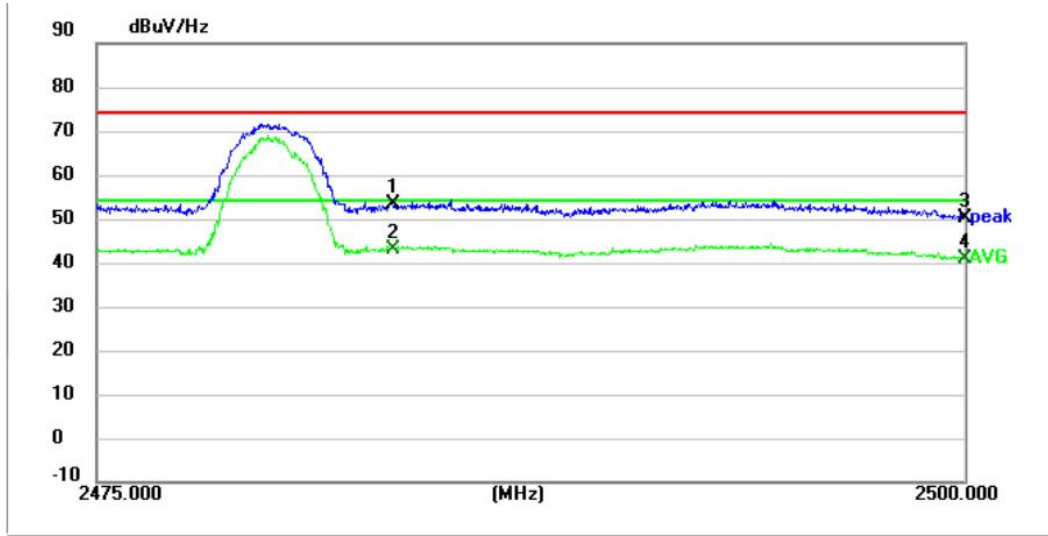
No.	Frequency (MHz)	Reading (dBuV)	Factor (dB)	Level (dBuV/Hz)	Limit (dBuV/Hz)	Margin (dB)	Detector
1	2390.0000	47.58	2.34	49.92	74.00	24.08	peak
2	2390.0000	39.14	2.34	41.48	54.00	12.52	AVG
3	2400.0000	48.60	2.38	50.98	74.00	23.02	peak
4 *	2400.0000	40.15	2.38	42.53	54.00	11.47	AVG

Mode1 / Polarization: Vertical / CH: L



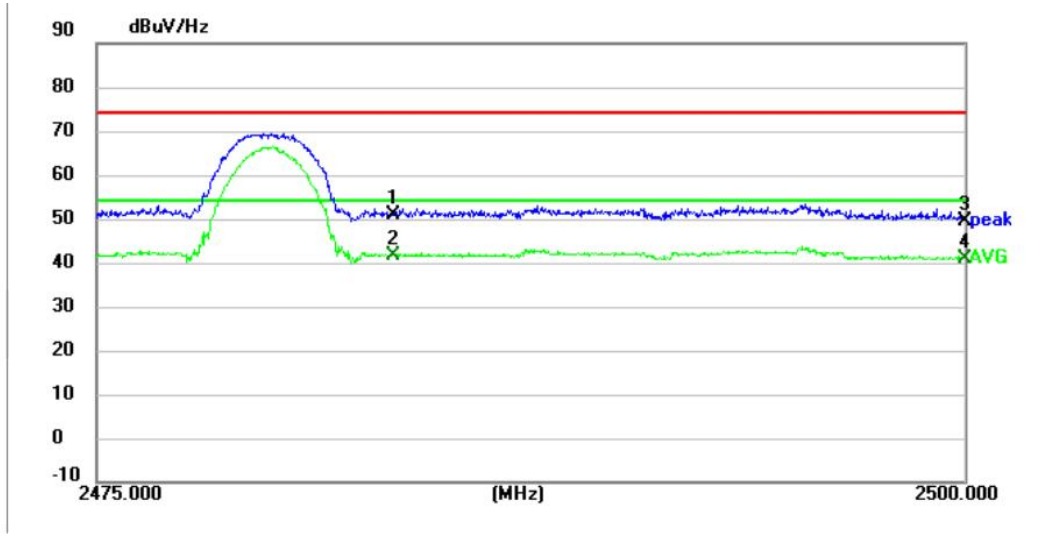
No.	Frequency (MHz)	Reading (dBuV)	Factor (dB)	Level (dBuV/Hz)	Limit (dBuV/Hz)	Margin (dB)	Detector
1	2390.0000	44.76	2.34	47.10	74.00	26.90	peak
2	2390.0000	36.04	2.34	38.38	54.00	15.62	AVG
3	2400.0000	47.52	2.38	49.90	74.00	24.10	peak
4 *	2400.0000	39.17	2.38	41.55	54.00	12.45	AVG

Mode1 / Polarization: Horizontal / CH: H



No.	Frequency (MHz)	Reading (dBuV)	Factor (dB)	Level (dBuV/Hz)	Limit (dBuV/Hz)	Margin (dB)	Detector
1	2483.5000	50.87	2.66	53.53	74.00	20.47	peak
2 *	2483.5000	40.21	2.66	42.87	54.00	11.13	AVG
3	2500.0000	47.34	2.80	50.14	74.00	23.86	peak
4	2500.0000	37.95	2.80	40.75	54.00	13.25	AVG

Mode1 / Polarization: Vertical / CH: H



No.	Frequency (MHz)	Reading (dBuV)	Factor (dB)	Level (dBuV/Hz)	Limit (dBuV/Hz)	Margin (dB)	Detector
1	2483.5000	48.37	2.66	51.03	74.00	22.97	peak
2 *	2483.5000	39.04	2.66	41.70	54.00	12.30	AVG
3	2500.0000	46.60	2.80	49.40	74.00	24.60	peak
4	2500.0000	38.09	2.80	40.89	54.00	13.11	AVG

5.2.9. Radiated Spurious Emission (below 1GHz)

Test Requirement:	Refer to 47 CFR 15.247(d), In addition, radiated emissions which fall in the restricted bands, as defined in § 15.205(a), must also comply with the radiated emission limits specified in § 15.209(a)(see § 15.205(c)).`		
Test Limit:	Frequency (MHz)	Field strength (microvolts/meter)	Measurement distance (meters)
	0.009-0.490	2400/F(kHz)	300
	0.490-1.705	24000/F(kHz)	30
	1.705-30.0	30	30
	30-88	100 **	3
	88-216	150 **	3
	216-960	200 **	3
	Above 960	500	3
<p>** Except as provided in paragraph (g), fundamental emissions from intentional radiators operating under this section shall not be located in the frequency bands 54-72 MHz, 76-88 MHz, 174-216 MHz or 470-806 MHz. However, operation within these frequency bands is permitted under other sections of this part, e.g., §§ 15.231 and 15.241.</p> <p>In the emission table above, the tighter limit applies at the band edges.</p> <p>The emission limits shown in the above table are based on measurements employing a CISPR quasi-peak detector except for the frequency bands 9–90 kHz, 110–490 kHz and above 1000 MHz. Radiated emission limits in these three bands are based on measurements employing an average detector.</p>			
Test Method:	ANSI C63.10-2020 section 6.6.4		
Procedure:	<p>1. The EUT was setup and tested according to ANSI C63.10.</p> <p>2. The EUT is placed on a turn table which is 0.8 meter above ground for below 1 GHz, and 1.5 m for above 1 GHz. The turn table is rotated 360 degrees to determine the position of the maximum emission level.</p> <p>3. The EUT was set 3 meters from the receiving antenna, which was mounted on the top of a variable height antenna tower.</p> <p>4. For each suspected emission, the EUT was arranged to its worst case and then tune the Antenna tower (from 1 m to 4 m) and turntable (from 0 degree to 360 degrees) to find the maximum reading. A pre-amp and a high pass filter are used for the test in order to get better signal level to comply with the guidelines.</p> <p>5. Set to the maximum power setting and enable the EUT transmit continuously.</p> <p>6. Use the following spectrum analyzer settings</p> <p>a) Span shall wide enough to fully capture the emission being measured;</p> <p>b) RBW=120 kHz, VBW=300 kHz, Sweep=auto, Detector function=peak, Trace=max hold;</p> <p>If the emission level of the EUT measured by the peak detector is 3 dB lower than the applicable limit, the peak emission level will be reported. Otherwise, the emission measurement will be repeated using the quasi-peak detector and reported.</p>		

5.2.9.1. E.U.T. Operation

Operating Environment:					
Temperature:	22.9 °C	Humidity:	55.1 %	Atmospheric Pressure:	102 kPa
Pre test mode:	TM1,TM2, TM3				
Final test mode:	TM1,TM2, TM3				

5.2.9.2. Test Setup Diagram



5.2.9.3. Test Result

Pass

5.2.9.4. Test Data

Have pre-scan all test mode, found TM1 mode which it was worst case, so only show the worst case's data on this report.

Mode1 / Polarization: Horizontal / CH: L



No.	Frequency (MHz)	Reading (dBuV)	Factor (dB/m)	Level (dBuV/m)	Limit (dBuV/m)	Margin (dB)	Detector
1	53.6931	51.92	-29.97	21.95	40.00	18.05	QP
2	80.0805	56.96	-34.98	21.98	40.00	18.02	QP
3	125.4457	59.52	-32.87	26.65	43.50	16.85	QP
4	200.6880	64.27	-29.83	34.44	43.50	9.06	QP
5 *	374.6225	63.64	-25.51	38.13	46.00	7.87	QP
6	869.1300	51.97	-15.25	36.72	46.00	9.28	QP

Mode1 / Polarization: Vertical / CH: L



No.	Frequency (MHz)	Reading (dBuV)	Factor (dB/m)	Level (dBuV/m)	Limit (dBuV/m)	Margin (dB)	Detector
1	42.8997	59.57	-29.93	29.64	40.00	10.36	QP
2 *	56.3947	60.50	-30.40	30.10	40.00	9.90	QP
3	106.7587	60.66	-30.69	29.97	43.50	13.53	QP
4	200.6880	56.40	-29.83	26.57	43.50	16.93	QP
5	312.1792	49.59	-26.84	22.75	46.00	23.25	QP
6	566.6221	51.83	-20.15	31.68	46.00	14.32	QP

Note:

1) For 9 kHz ~ 30 MHz Measurement

The EUT was pre-scanned this frequency band, found the radiated level 20dB lower than the limit, so don't show data on this report.

2) Level= Reading + Factor; Factor =Antenna Factor+ Cable Loss- Preamp Factor

3) Margin = Limit – Level

5.2.10. Radiated Spurious Emission (Above 1GHz)

Test Requirement:	In addition, radiated emissions which fall in the restricted bands, as defined in § 15.205(a), must also comply with the radiated emission limits specified in § 15.209(a)(see § 15.205(c)).`		
Test Limit:	Frequency (MHz)	Field strength (microvolts/meter)	Measurement distance (meters)
	0.009-0.490	2400/F(kHz)	300
	0.490-1.705	24000/F(kHz)	30
	1.705-30.0	30	30
	30-88	100 **	3
	88-216	150 **	3
	216-960	200 **	3
	Above 960	500	3
<p>** Except as provided in paragraph (g), fundamental emissions from intentional radiators operating under this section shall not be located in the frequency bands 54-72 MHz, 76-88 MHz, 174-216 MHz or 470-806 MHz. However, operation within these frequency bands is permitted under other sections of this part, e.g., §§ 15.231 and 15.241.</p> <p>In the emission table above, the tighter limit applies at the band edges.</p> <p>The emission limits shown in the above table are based on measurements employing a CISPR quasi-peak detector except for the frequency bands 9–90 kHz, 110–490 kHz and above 1000 MHz. Radiated emission limits in these three bands are based on measurements employing an average detector.</p>			
Test Method:	ANSI C63.10-2020 section 6.6.4		
Procedure:	<p>1. The EUT was setup and tested according to ANSI C63.10.</p> <p>2. The EUT is placed on a turn table which is 0.8 meter above ground for below 1 GHz, and 1.5 m for above 1 GHz. The turn table is rotated 360 degrees to determine the position of the maximum emission level.</p> <p>3. The EUT was set 3 meters from the receiving antenna, which was mounted on the top of a variable height antenna tower.</p> <p>4. For each suspected emission, the EUT was arranged to its worst case and then tune the Antenna tower (from 1 m to 4 m) and turntable (from 0 degree to 360 degrees) to find the maximum reading. A pre-amp and a high pass filter are used for the test in order to get better signal level to comply with the guidelines.</p> <p>5. Set to the maximum power setting and enable the EUT transmit continuously.</p> <p>6. Use the following spectrum analyzer settings</p> <p>a) Span shall wide enough to fully capture the emission being measured;</p> <p>b) Set RBW=1MHz, VBW=3MHz for >1GHz, Sweep time=auto, Detector=peak, Trace=max hold for Peak measurement</p> <p>For average measurement: use duty cycle correction factor method (DCCF)Averager level = Peak level + DCCF</p>		

5.2.10.1. E.U.T. Operation

Operating Environment:					
Temperature:	22.9 °C	Humidity:	55.1 %	Atmospheric Pressure:	102 kPa
Pre test mode:	TM1				
Final test mode:	TM1				

5.2.10.2. Test Setup Diagram



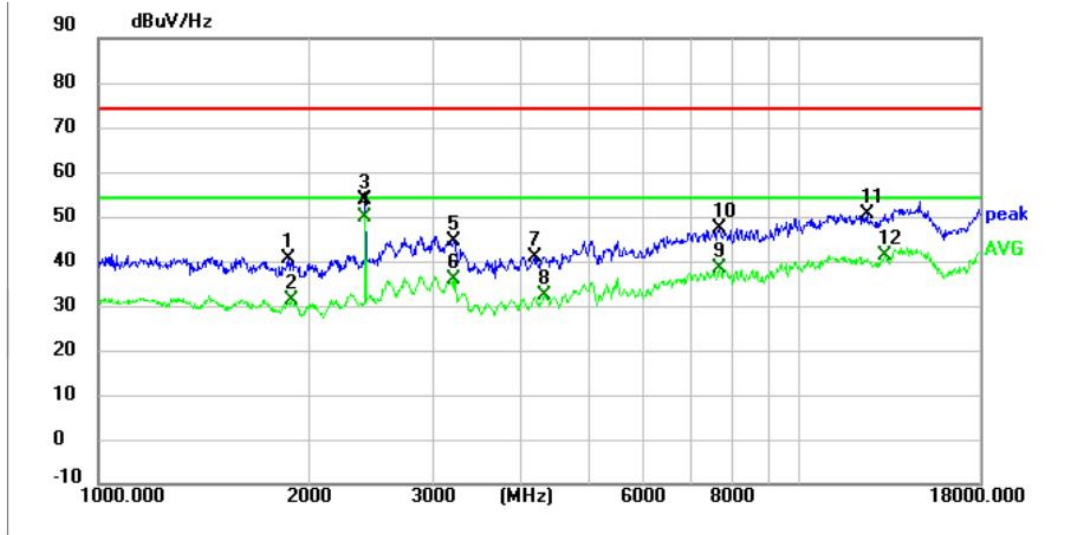
5.2.10.3. Test Result

Pass

5.2.10.4. Test Data

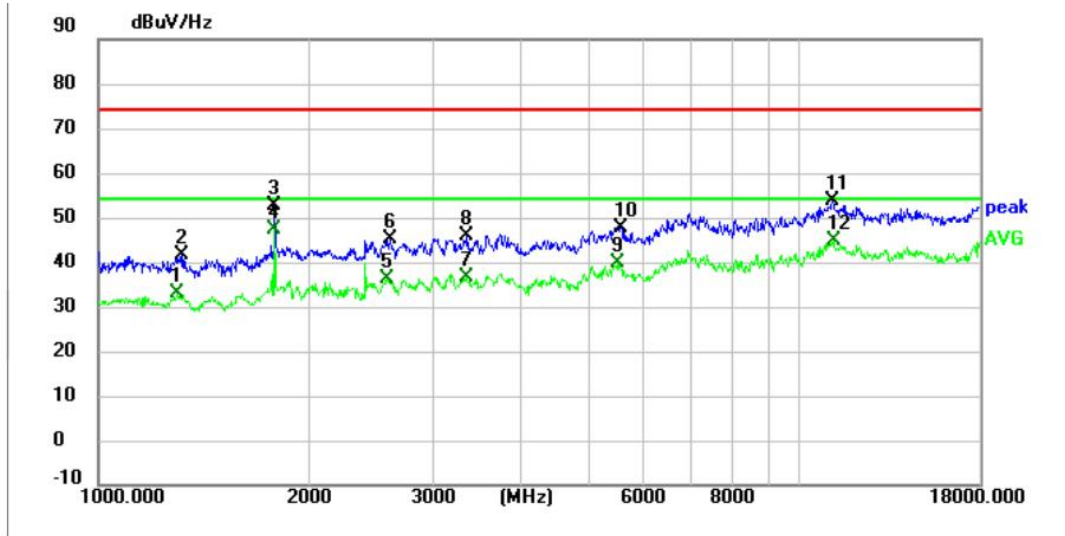
Have pre-scan all test mode, found TM1 mode which it was worst case, so only show the worst case's data on this report.

Mode1 / Polarization: Horizontal / CH: L



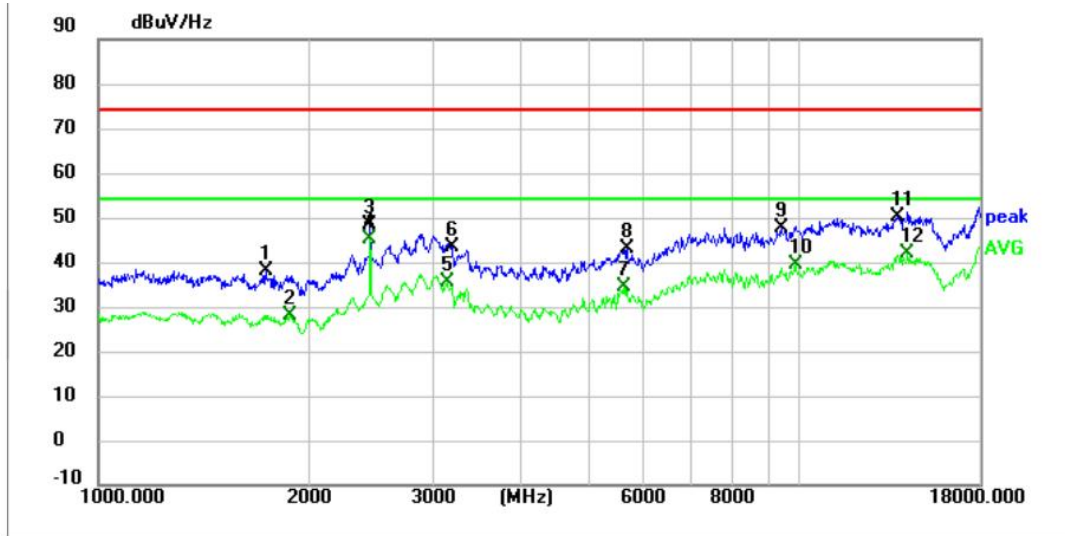
No.	Frequency (MHz)	Reading (dBuV)	Factor (dB)	Level (dBuV/Hz)	Limit (dBuV/Hz)	Margin (dB)	Detector
1	1865.3000	40.60	-0.15	40.45	74.00	33.55	peak
2	1887.4000	31.26	-0.08	31.18	54.00	22.82	AVG
3	2404.2000	51.27	2.38	53.65	74.00	20.35	peak
4 *	2404.2000	47.60	2.38	49.98	54.00	4.02	AVG
5	3215.1000	37.96	6.59	44.55	74.00	29.45	peak
6	3215.1000	29.37	6.59	35.96	54.00	18.04	AVG
7	4190.9000	33.11	7.88	40.99	74.00	33.01	peak
8	4323.5000	24.24	8.03	32.27	54.00	21.73	AVG
9	7672.5000	15.66	22.67	38.33	54.00	15.67	AVG
10	7679.3000	24.73	22.66	47.39	74.00	26.61	peak
11	12458.0000	22.73	27.65	50.38	74.00	23.62	peak
12	13223.0000	53.18	-11.87	41.31	54.00	12.69	AVG

Mode1 / Polarization: Vertical / CH: L



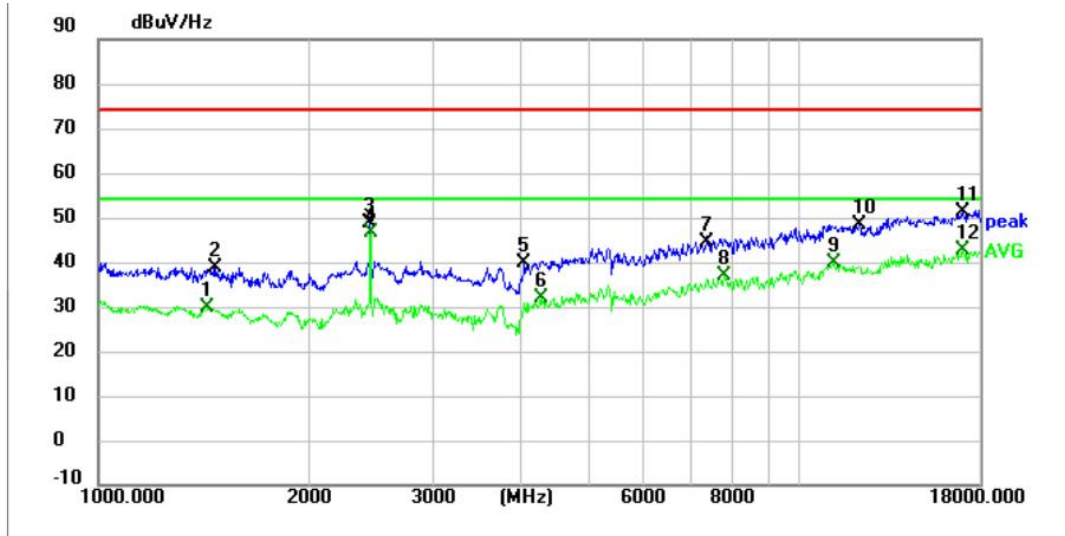
No.	Frequency (MHz)	Reading (dBuV)	Factor (dB)	Level (dBuV/Hz)	Limit (dBuV/Hz)	Margin (dB)	Detector
1	1299.2000	34.50	-1.61	32.89	54.00	21.11	AVG
2	1316.2000	43.35	-1.62	41.73	74.00	32.27	peak
3	1785.4000	52.89	-0.27	52.62	74.00	21.38	peak
4 *	1785.4000	47.55	-0.27	47.28	54.00	6.72	AVG
5	2574.2000	32.50	3.69	36.19	54.00	17.81	AVG
6	2604.8000	41.05	4.06	45.11	74.00	28.89	peak
7	3344.3000	30.34	6.44	36.78	54.00	17.22	AVG
8	3352.8000	39.58	6.44	46.02	74.00	27.98	peak
9	5516.9000	24.88	14.86	39.74	54.00	14.26	AVG
10	5552.6000	32.99	14.86	47.85	74.00	26.15	peak
11	11133.7000	25.76	28.09	53.85	74.00	20.15	peak
12	11152.4000	16.63	28.12	44.75	54.00	9.25	AVG

Mode1 / Polarization: Horizontal / CH: M



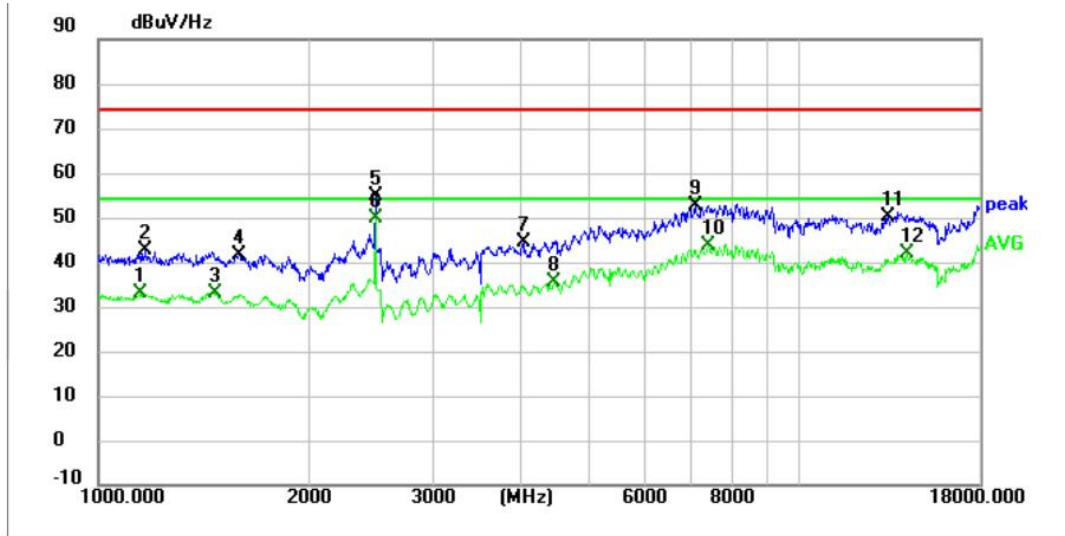
No.	Frequency (MHz)	Reading (dBuV)	Factor (dB)	Level (dBuV/Hz)	Limit (dBuV/Hz)	Margin (dB)	Detector
1	1734.4000	38.61	-0.63	37.98	74.00	36.02	peak
2	1880.6000	28.24	-0.10	28.14	54.00	25.86	AVG
3	2441.6000	46.12	2.39	48.51	74.00	25.49	peak
4 *	2441.6000	42.69	2.39	45.08	54.00	8.92	AVG
5	3148.8000	29.12	6.36	35.48	54.00	18.52	AVG
6	3196.4000	36.89	6.56	43.45	74.00	30.55	peak
7	5613.8000	19.77	14.77	34.54	54.00	19.46	AVG
8	5675.0000	28.05	15.04	43.09	74.00	30.91	peak
9	9403.1000	23.26	24.26	47.52	74.00	26.48	peak
10	9865.5000	14.08	25.21	39.29	54.00	14.71	AVG
11	13775.5000	61.44	-11.18	50.26	74.00	23.74	peak
12	14217.5000	52.41	-10.54	41.87	54.00	12.13	AVG

Mode1 / Polarization: Vertical / CH: M



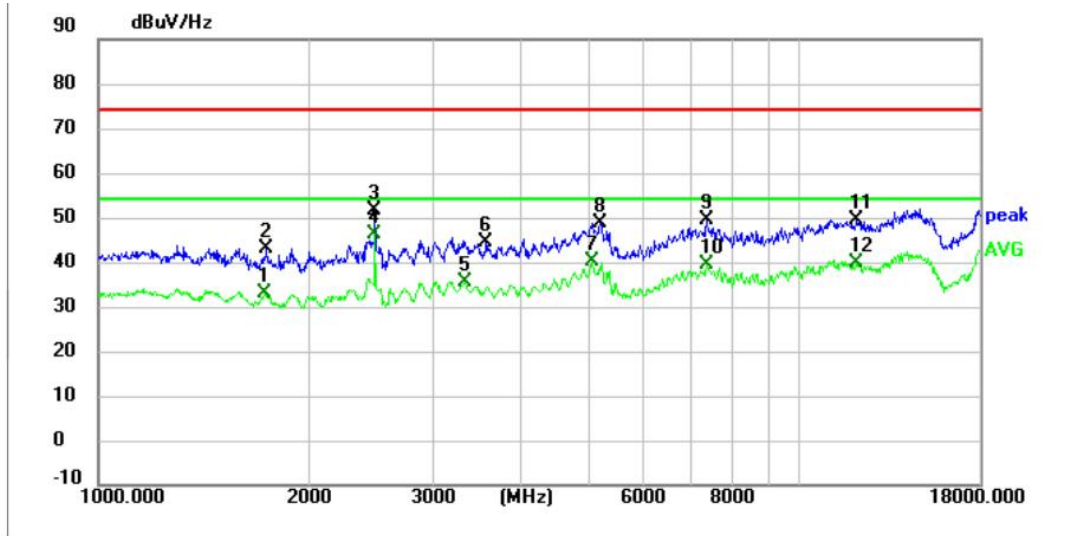
No.	Frequency (MHz)	Reading (dBuV)	Factor (dB)	Level (dBuV/Hz)	Limit (dBuV/Hz)	Margin (dB)	Detector
1	1431.8000	31.23	-1.44	29.79	54.00	24.21	AVG
2	1470.9000	40.16	-1.33	38.83	74.00	35.17	peak
3	2441.6000	46.24	2.39	48.63	74.00	25.37	peak
4 *	2443.3000	44.08	2.39	46.47	54.00	7.53	AVG
5	4041.3000	32.63	7.30	39.93	74.00	34.07	peak
6	4270.8000	23.90	7.93	31.83	54.00	22.17	AVG
7	7359.7000	22.49	22.13	44.62	74.00	29.38	peak
8	7823.8000	14.58	22.24	36.82	54.00	17.18	AVG
9	11149.0000	11.52	28.13	39.65	54.00	14.35	AVG
10	12146.9000	20.69	27.81	48.50	74.00	25.50	peak
11	17085.4000	63.29	-12.21	51.08	74.00	22.92	peak
12	17085.4000	54.94	-12.21	42.73	54.00	11.27	AVG

Mode1 / Polarization: Horizontal / CH: H



No.	Frequency (MHz)	Reading (dBuV)	Factor (dB)	Level (dBuV/Hz)	Limit (dBuV/Hz)	Margin (dB)	Detector
1	1148.9824	34.59	-1.70	32.89	54.00	21.11	AVG
2	1169.1022	44.45	-1.64	42.81	74.00	31.19	peak
3	1465.0815	34.51	-1.33	33.18	54.00	20.82	AVG
4	1584.1201	43.04	-1.27	41.77	74.00	32.23	peak
5	2480.5621	52.04	2.64	54.68	74.00	19.32	peak
6 *	2480.5621	47.15	2.64	49.79	54.00	4.21	AVG
7	4033.1743	37.06	7.30	44.36	74.00	29.64	peak
8	4462.9857	26.65	8.95	35.60	54.00	18.40	AVG
9	7090.3905	31.22	21.54	52.76	74.00	21.24	peak
10	7404.8810	21.76	22.14	43.90	54.00	10.10	AVG
11	13361.3400	61.65	-11.55	50.10	74.00	23.90	peak
12	14198.3253	52.35	-10.52	41.83	54.00	12.17	AVG

Mode1 / Polarization: Vertical / CH: H



No.	Frequency (MHz)	Reading (dBuV)	Factor (dB)	Level (dBuV/Hz)	Limit (dBuV/Hz)	Margin (dB)	Detector
1	1725.9000	33.76	-0.71	33.05	54.00	20.95	AVG
2	1741.2000	43.55	-0.60	42.95	74.00	31.05	peak
3	2482.4000	49.11	2.66	51.77	74.00	22.23	peak
4 *	2482.4000	43.44	2.66	46.10	54.00	7.90	AVG
5	3332.4000	28.95	6.43	35.38	54.00	18.62	AVG
6	3573.8000	38.00	6.33	44.33	74.00	29.67	peak
7	5056.2000	27.15	13.03	40.18	54.00	13.82	AVG
8	5185.4000	35.48	13.23	48.71	74.00	25.29	peak
9	7363.1000	27.18	22.13	49.31	74.00	24.69	peak
10	7386.9000	17.28	22.12	39.40	54.00	14.60	AVG
11	12063.6000	21.57	27.73	49.30	74.00	24.70	peak
12	12063.6000	12.23	27.73	39.96	54.00	14.04	AVG

Note:

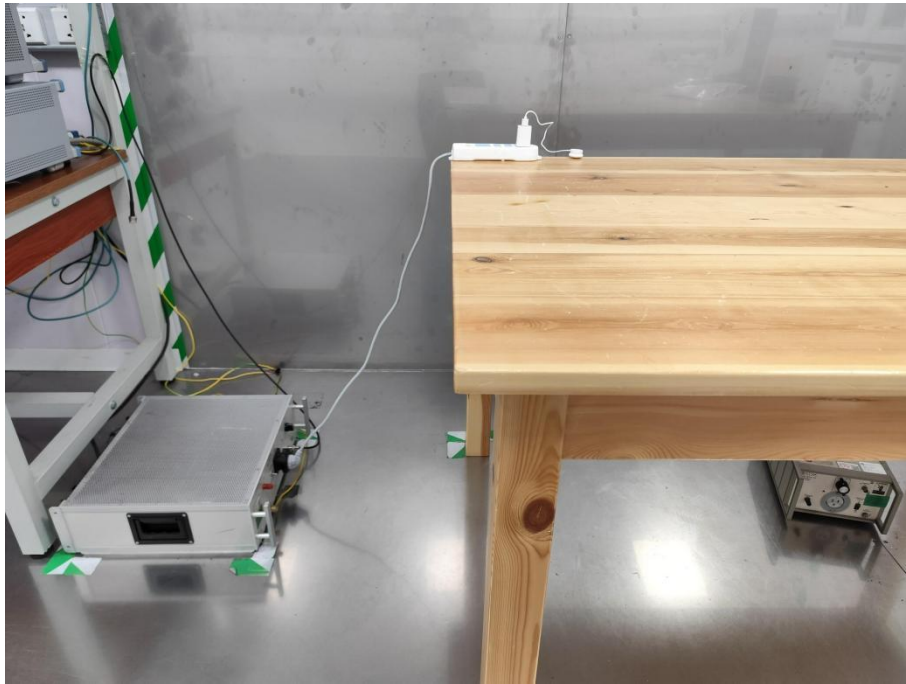
1) Level= Reading + Factor; Factor =Antenna Factor+ Cable Loss- Preamp Factor

2) Margin = Limit – Level

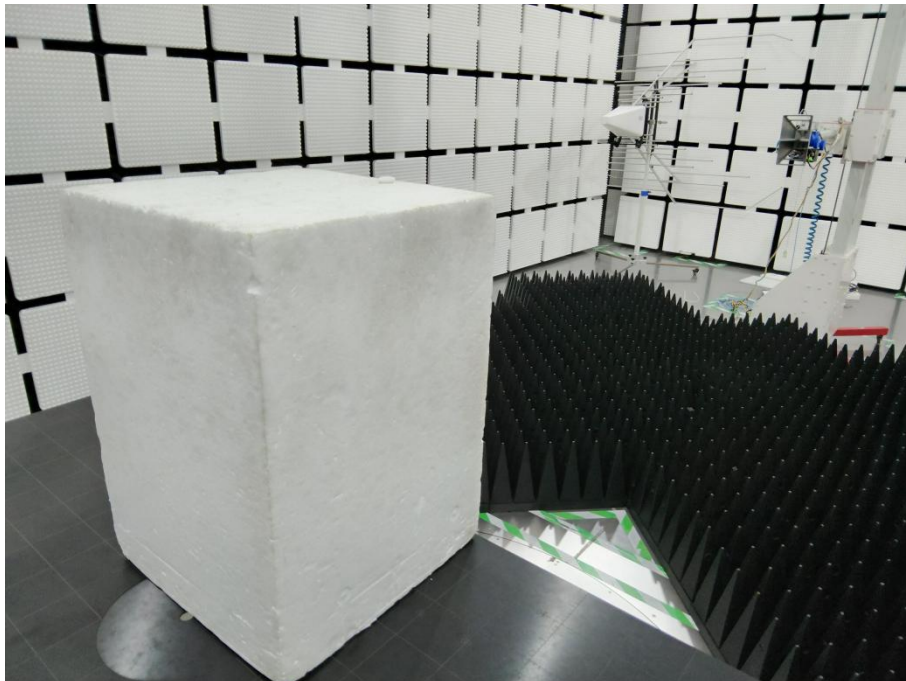
3) Average measurement was not performed if peak level is lower than average limit (54dBuV/m) for above 1GHz.

6. TEST SETUP PHOTOS

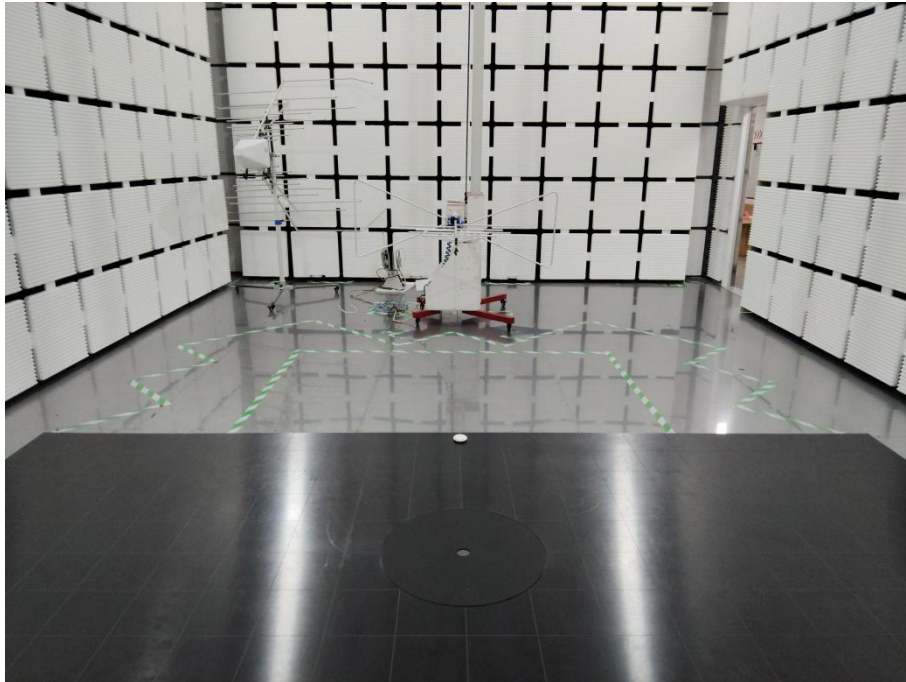
Conducted Emission at AC power line



Radiated band edge emission
Radiated Spurious Emission (Above 1GHz)

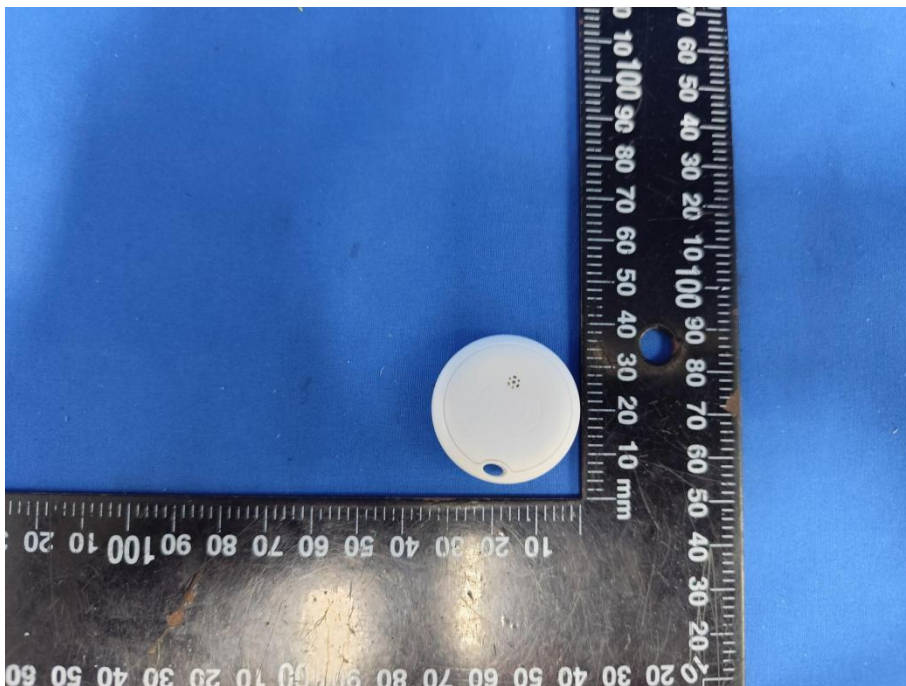
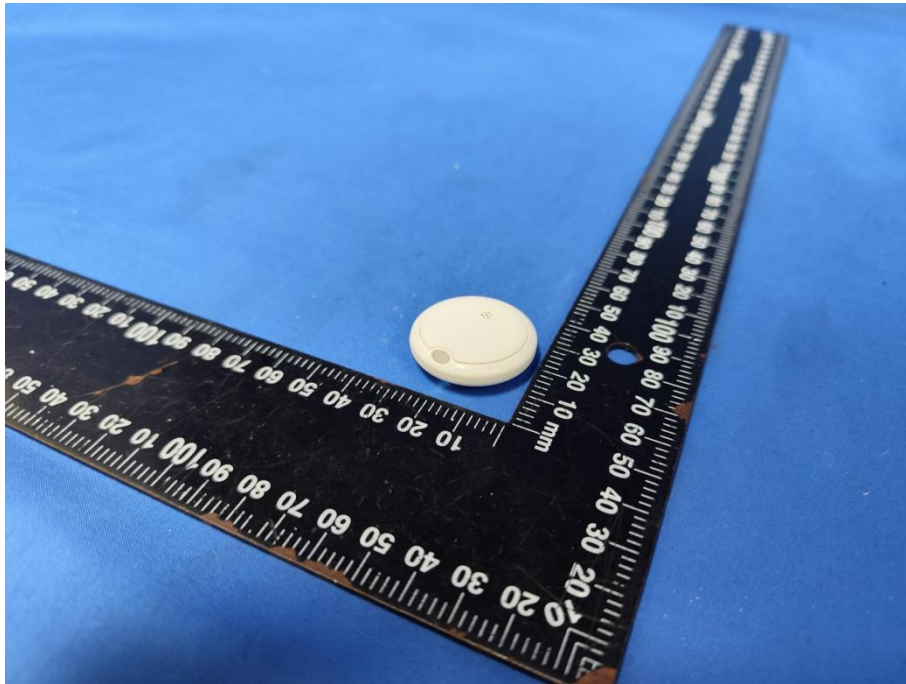


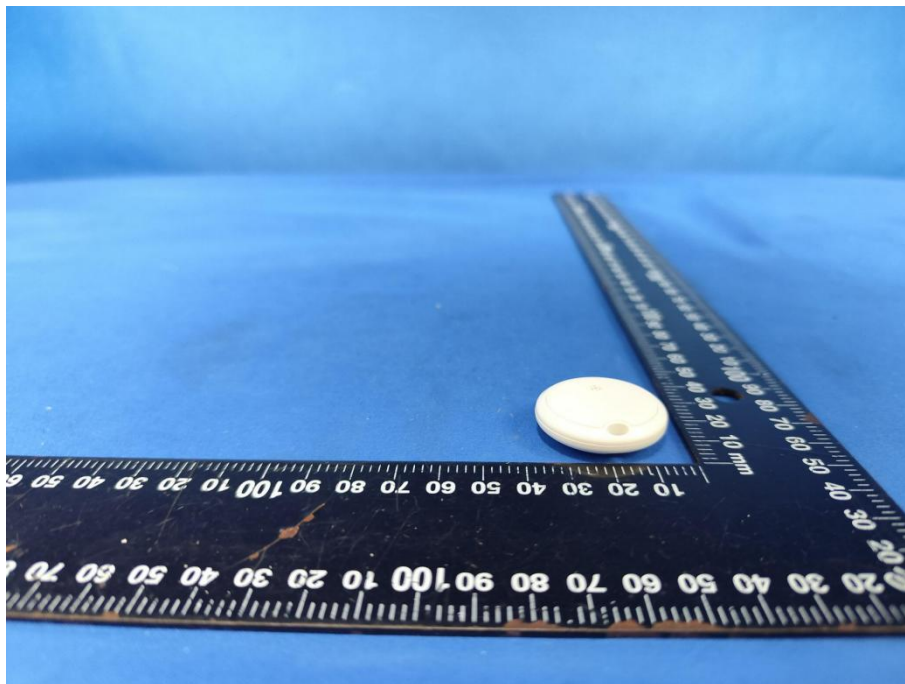
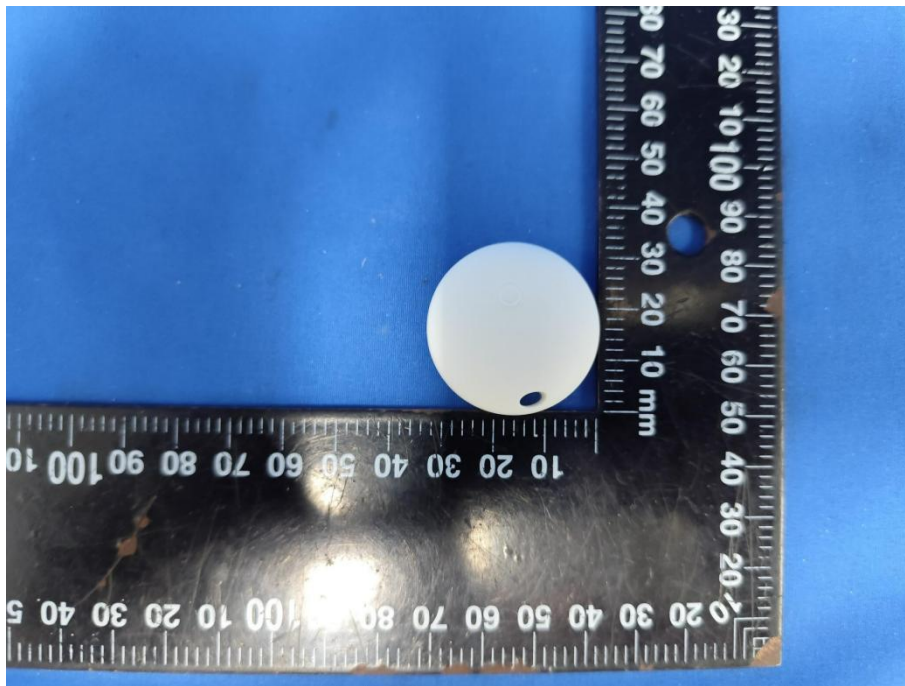
Radiated Spurious Emission (below 1GHz)

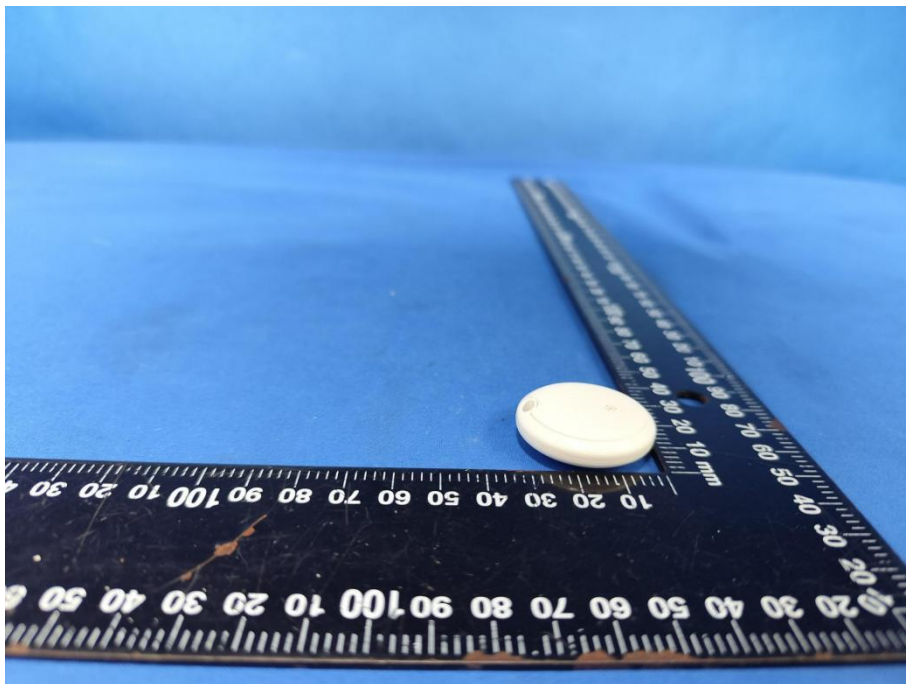
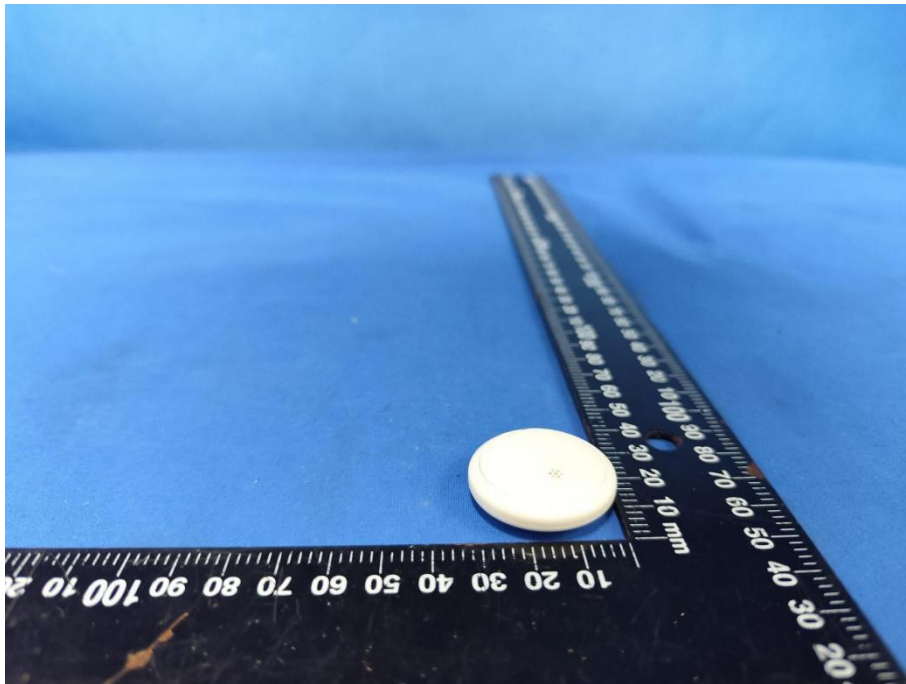


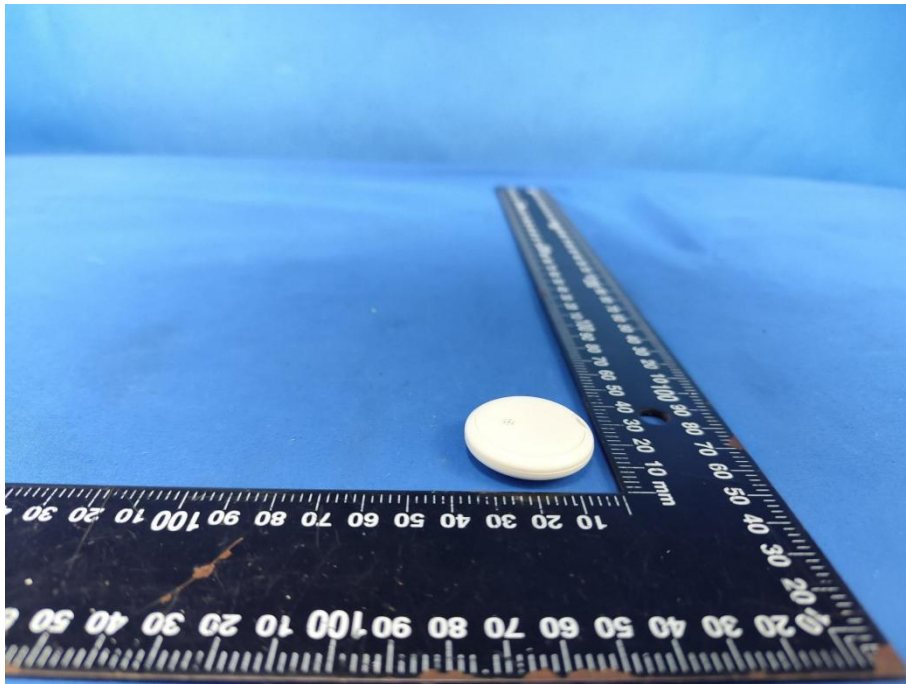
7. EXTERNAL AND INTERNAL PHOTOS

7.1. External Photos









7.2. Internal Photos

