



Shenzhen Huaxia Testing Technology Co., Ltd.

1F., Block A of Tongsheng Technology Building, Huahui Road, Dalang Street, Longhua District, Shenzhen, China

Telephone: +86-755-26648640
Fax: +86-755-26648637
Website: www.cqa-cert.com

Report Template Version: V05
Report Template Revision Date: 2021-11-03

Test Report

Report No. : CQASZ20240500895E-01
Applicant: Creek Wearable Technology Co., Ltd.
Address of Applicant: 910, 5A office building, Longguang Jiuzuan, Longhua District, Shenzhen
Equipment Under Test (EUT):
Product: Smart Watch
Model No.: CW Watch S1
Test Model No.: CW Watch S1
Brand Name: N/A
FCC ID: 2BBYH-C1018
Standards: 47 CFR Part 15, Subpart C
Date of Receipt: 2024-05-23
Date of Test: 2024-05-23 to 2024-05-31
Date of Issue: 2024-06-04
Test Result : **PASS***

*In the configuration tested, the EUT complied with the standards specified above.

Tested By: Lewis Zhou
(Lewis Zhou)

Reviewed By: Timo Lei
(Timo Lei)

Approved By: Alex
(Alex Wang)



1 Version

Revision History Of Report

Report No.	Version	Description	Issue Date
CQASZ20240500895E-01	Rev.01	Initial report	2024-06-04

Note:

The report only embodies the test data of the 2# prototype

#1 refer to original test report NO.CQASZ20230601050E

The difference between product #1 and product #2 is that the Heart rate pad model is different including having different Heart rate pad supplier. The key differences are the appearance and the model number. These changes do not affect RF performance.

2 Test Summary

Test Item	Test Requirement	Test method	Result
Antenna Requirement	47 CFR Part 15.203	/	PASS
AC Power Line Conducted Emission	47 CFR Part 15, Subpart C Section 15.207	ANSI C63.10-2013	PASS
Conducted Peak Output Power	47 CFR Part 15.207	ANSI C63.10-2013	N/A
20dB Occupied Bandwidth	47 CFR Part 15.247	ANSI C63.10-2013	N/A
Carrier Frequencies Separation	47 CFR Part 15.247	ANSI C63.10-2013	N/A
Hopping Channel Number	47 CFR Part 15.247	ANSI C63.10-2013	N/A
Dwell Time	47 CFR Part 15.247	ANSI C63.10-2013	N/A
Pseudorandom Frequency Hopping Sequence	47 CFR Part 15.247	ANSI C63.10-2013	N/A
Band-edge for RF Conducted Emissions	47 CFR Part 15.247	ANSI C63.10-2013	N/A
RF Conducted Spurious Emissions	47 CFR Part 15.247	ANSI C63.10-2013	N/A
Radiated Spurious emissions	47 CFR Part 15.209	ANSI C63.10-2013	PASS
Restricted bands around fundamental frequency (Radiated Emission)	47 CFR Part 15.205/15.209	ANSI C63.10-2013	PASS

Remark:

The tested sample(s) and the sample information are provided by the client.

Tx: In this whole report Tx (or tx) means Transmitter.

Rx: In this whole report Rx (or rx) means Receiver.

RF: In this whole report RF means Radiated Frequency.

CH: In this whole report CH means channel.

Volt: In this whole report Volt means Voltage.

Temp: In this whole report Temp means Temperature.

Humid: In this whole report Humid means humidity.

Press: In this whole report Press means Pressure.

N/A: In this whole report not application

3 Contents

	Page
1 VERSION	2
2 TEST SUMMARY	3
3 CONTENTS	4
4 GENERAL INFORMATION	5
4.1 CLIENT INFORMATION	5
4.2 GENERAL DESCRIPTION OF EUT	5
4.3 ADDITIONAL INSTRUCTIONS	7
4.4 TEST ENVIRONMENT	8
4.5 DESCRIPTION OF SUPPORT UNITS	8
4.6 STATEMENT OF THE MEASUREMENT UNCERTAINTY	9
4.7 TEST LOCATION	10
4.8 TEST FACILITY	10
4.9 ABNORMALITIES FROM STANDARD CONDITIONS	10
4.10 OTHER INFORMATION REQUESTED BY THE CUSTOMER	10
4.11 EQUIPMENT LIST	11
5 TEST RESULTS AND MEASUREMENT DATA	12
5.1 ANTENNA REQUIREMENT	12
5.2 CONDUCTED EMISSIONS	13
5.3 OTHER REQUIREMENTS FREQUENCY HOPPING SPREAD SPECTRUM SYSTEM	17
5.4 RADIATED SPURIOUS EMISSION & RESTRICTED BANDS	19
5.4.1 Radiated Emission below 1GHz	22
5.4.2 Transmitter Emission above 1GHz	24
6 PHOTOGRAPHS - EUT TEST SETUP	27
6.1 RADIATED EMISSION	27
6.2 CONDUCTED EMISSION	28
7 PHOTOGRAPHS - EUT CONSTRUCTIONAL DETAILS	29

4 General Information

4.1 Client Information

Applicant:	Creek Wearable Technology Co., Ltd.
Address of Applicant:	910, 5A office building, Longguang Jiuzuan, Longhua District, Shenzhen
Manufacturer:	Creek Wearable Technology Co., Ltd.
Address of Manufacturer:	910, 5A office building, Longguang Jiuzuan, Longhua District, Shenzhen
Factory:	Creek Wearable Technology Co., Ltd.
Address of Factory:	910, 5A office building, Longguang Jiuzuan, Longhua District, Shenzhen

4.2 General Description of EUT

Product Name:	Smart Watch
Model No.:	CW Watch S1
Test Model No.:	CW Watch S1
Trade Mark:	N/A
Software Version:	V2.1.16
Hardware Version:	CW01-MAIN-BRD-V1.0
Operation Frequency:	2402MHz~2480MHz
Bluetooth Version:	V5.3
Modulation Technique:	Frequency Hopping Spread Spectrum(FHSS)
Modulation Type:	GFSK, $\pi/4$ DQPSK, 8DPSK
Transfer Rate:	1Mbps/2Mbps/3Mbps
Number of Channel:	79
Hopping Channel Type:	Adaptive Frequency Hopping systems
Product Type:	<input type="checkbox"/> Mobile <input checked="" type="checkbox"/> Portable
Test Software of EUT:	FCC
Antenna Type:	PIFA antenna
Antenna Gain:	-2.81dBi
Power Supply:	Li-ion battery: DC 3.8V 350mAh, Charge by DC 5V for adapter
Simultaneous Transmission	<input type="checkbox"/> Simultaneous TX is supported and evaluated in this report. <input checked="" type="checkbox"/> Simultaneous TX is not supported.

Operation Frequency each of channel							
Channel	Frequency	Channel	Frequency	Channel	Frequency	Channel	Frequency
0	2402MHz	20	2422MHz	40	2442MHz	60	2462MHz
1	2403MHz	21	2423MHz	41	2443MHz	61	2463MHz
2	2404MHz	22	2424MHz	42	2444MHz	62	2464MHz
3	2405MHz	23	2425MHz	43	2445MHz	63	2465MHz
4	2406MHz	24	2426MHz	44	2446MHz	64	2466MHz
5	2407MHz	25	2427MHz	45	2447MHz	65	2467MHz
6	2408MHz	26	2428MHz	46	2448MHz	66	2468MHz
7	2409MHz	27	2429MHz	47	2449MHz	67	2469MHz
8	2410MHz	28	2430MHz	48	2450MHz	68	2470MHz
9	2411MHz	29	2431MHz	49	2451MHz	69	2471MHz
10	2412MHz	30	2432MHz	50	2452MHz	70	2472MHz
11	2413MHz	31	2433MHz	51	2453MHz	71	2473MHz
12	2414MHz	32	2434MHz	52	2454MHz	72	2474MHz
13	2415MHz	33	2435MHz	53	2455MHz	73	2475MHz
14	2416MHz	34	2436MHz	54	2456MHz	74	2476MHz
15	2417MHz	35	2437MHz	55	2457MHz	75	2477MHz
16	2418MHz	36	2438MHz	56	2458MHz	76	2478MHz
17	2419MHz	37	2439MHz	57	2459MHz	77	2479MHz
18	2420MHz	38	2440MHz	58	2460MHz	78	2480MHz
19	2421MHz	39	2441MHz	59	2461MHz		

Note:

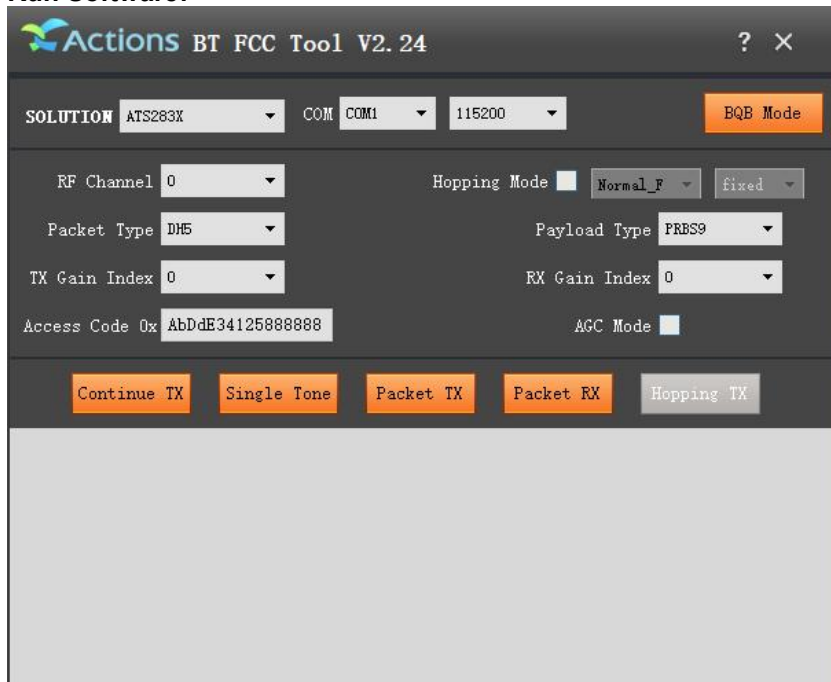
In section 15.31(m), regards to the operating frequency range over 10 MHz, the Lowest frequency, the middle frequency, and the highest frequency of channel were selected to perform the test, and the selected channel see below:

Channel	Frequency
The Lowest channel	2402MHz
The Middle channel	2441MHz
The Highest channel	2480MHz

4.3 Additional Instructions

EUT Test Software Settings:		
Mode:	<input checked="" type="checkbox"/> Special software is used. <input type="checkbox"/> Through engineering command into the engineering mode. engineering command: ***#3646633#**	
EUT Power level:	(Power level is built-in set parameters and cannot be changed and selected)	
Use test software to set the lowest frequency, the middle frequency and the highest frequency keep transmitting of the EUT.		
Mode	Channel	Frequency(MHz)
DH1/DH3/DH5	CH0	2402
	CH39	2441
	CH78	2480
2DH1/2DH3/2DH5	CH0	2402
	CH39	2441
	CH78	2480
3DH1/3DH3/3DH5	CH0	2402
	CH39	2441
	CH78	2480

Run Software:



4.4 Test Environment

Operating Environment:	
Temperature:	25 °C
Humidity:	54% RH
Atmospheric Pressure:	1009mbar
Test Mode:	Use test software to set the lowest frequency, the middle frequency and the highest frequency keep transmitting of the EUT.

4.5 Description of Support Units

The EUT has been tested with associated equipment below.

Description	Manufacturer	Model No.	Remark	Supplied
Adapter	MI	/	/	CQA

4.6 Statement of the measurement uncertainty

The data and results referenced in this document are true and accurate.

The reader is cautioned that there may be errors within the calibration limits of the equipment and facilities.

The measurement uncertainty was calculated for all measurements listed in this test report acc. to CISPR 16 - 4 „Specification for radio disturbance and immunity measuring apparatus and methods – Part 4: Uncertainty in EMC Measurements“ and is documented in the **Shenzhen Huaxia Testing Technology Co., Ltd.** quality system acc. to DIN EN ISO/IEC 17025.

Furthermore, component and process variability of devices similar to that tested may result in additional deviation. The manufacturer has the sole responsibility of continued compliance of the device.

Hereafter the best measurement capability for CQA laboratory is reported:

No.	Item	Uncertainty
1	Radiated Emission (Below 1GHz)	5.12dB
2	Radiated Emission (Above 1GHz)	4.60dB
3	Conducted Disturbance (0.15~30MHz)	3.34dB
4	Radio Frequency	3×10^{-8}
5	Duty cycle	0.6 %
6	Occupied Bandwidth	1.1%
7	RF conducted power	0.86dB
8	RF power density	0.74
9	Conducted Spurious emissions	0.86dB
10	Temperature test	0.8℃
11	Humidity test	2.0%
12	Supply voltages	0.5 %
13	Frequency Error	5.5 Hz

4.7 Test Location

All tests were performed at:

Shenzhen Huaxia Testing Technology Co., Ltd.

1F., Block A of Tongsheng Technology Building, Huahui Road, Dalang Street, Longhua District, Shenzhen, China

4.8 Test Facility

The test facility is recognized, certified, or accredited by the following organizations:

IC Registration No.: 22984-1

The 3m Semi-anechoic chamber of Shenzhen Huaxia Testing Technology Co., Ltd. has been registered by Certification and Engineering Bureau of Industry Canada for radio equipment testing

The test facility is recognized, certified, or accredited by the following organizations:

• **CNAS (No. CNAS L5785)**

CNAS has accredited Shenzhen Huaxia Testing Technology Co., Ltd. Shenzhen Branch EMC Lab to ISO/IEC 17025:2005 General Requirements for the Competence of Testing and Calibration Laboratories (CNAS-CL01 Accreditation Criteria for the Competence of Testing and Calibration Laboratories) for the competence in the field of testing.

• **A2LA (Certificate No. 4742.01)**

Shenzhen Huaxia Testing Technology Co., Ltd., Shenzhen EMC Laboratory is accredited by the American Association for Laboratory Accreditation(A2LA). Certificate No. 4742.01.

• **FCC Registration No.: 522263**

Shenzhen Huaxia Testing Technology Co., Ltd., Shenzhen EMC Laboratory has been registered and fully described in a report filed with the (FCC) Federal Communications Commission. The acceptance letter from the FCC is maintained in our files. Registration No.:522263

4.9 Abnormalities from Standard Conditions

None.

4.10 Other Information Requested by the Customer

None.

4.11 Equipment List

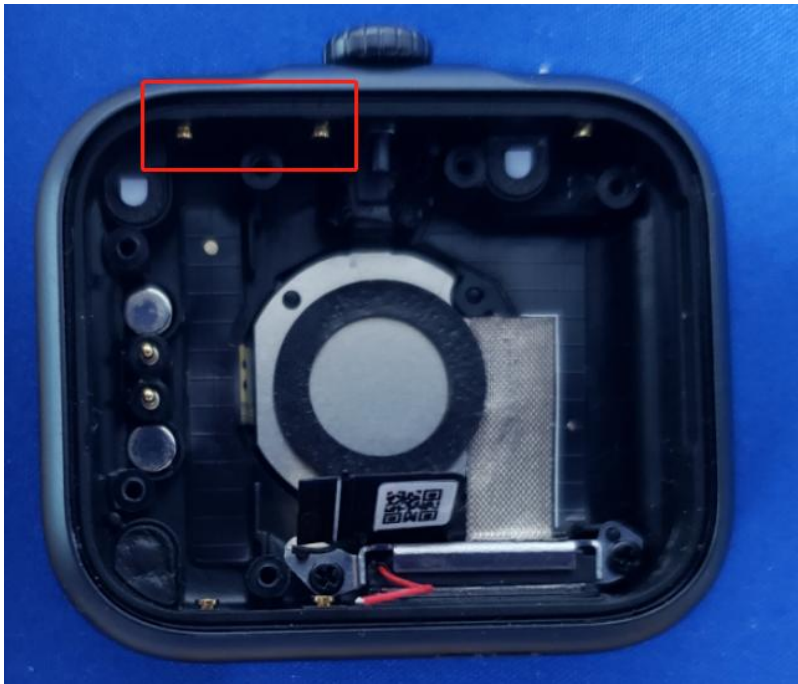
Test Equipment	Manufacturer	Model No.	Instrument No.	Calibration Date	Calibration Due Date
EMI Test Receiver	R&S	ESR7	CQA-005	2023/9/8	2024/9/7
Spectrum analyzer	R&S	FSU26	CQA-038	2023/9/8	2024/9/7
Spectrum analyzer	R&S	FSU40	CQA-075	2023/9/8	2024/9/7
Preamplifier	MITEQ	AFS4-00010300-18-10P-4	CQA-035	2023/9/8	2024/9/7
Preamplifier	MITEQ	AMF-6D-02001800-29-20P	CQA-036	2023/9/8	2024/9/7
Preamplifier	EMCI	EMC184055SE	CQA-089	2023/9/8	2024/9/7
Loop antenna	Schwarzbeck	FMZB1516	CQA-060	2021/09/16	2024/09/15
Bilog Antenna	R&S	HL562	CQA-011	2021/09/16	2024/09/15
Horn Antenna	R&S	HF906	CQA-012	2021/09/16	2024/09/15
Horn Antenna	Schwarzbeck	BBHA 9170	CQA-088	2021/09/16	2024/09/15
Coaxial Cable (Above 1GHz)	CQA	N/A	C007	2023/9/8	2024/9/7
Coaxial Cable (Below 1GHz)	CQA	N/A	C013	2023/9/8	2024/9/7
RF cable(9KHz~40GHz)	CQA	RF-01	CQA-079	2023/9/8	2024/9/7
Antenna Connector	CQA	RFC-01	CQA-080	2023/9/8	2024/9/7
Power Sensor	KEYSIGHT	U2021XA	CQA-30	2023/9/8	2024/9/7
N1918A Power Analysis Manager Power Panel	Agilent	N1918A	CQA-074	2023/9/8	2024/9/7
Power meter	R&S	NRVD	CQA-029	2023/9/8	2024/9/7
Power divider	MIDWEST	PWD-2533-02-SMA-79	CQA-067	2023/9/8	2024/9/7
EMI Test Receiver	R&S	ESR7	CQA-005	2023/9/8	2024/9/7
LISN	R&S	ENV216	CQA-003	2023/9/8	2024/9/7
Coaxial cable	CQA	N/A	CQA-C009	2023/9/8	2024/9/7
DC power	KEYSIGHT	E3631A	CQA-028	2023/9/8	2024/9/7

Note:

The temporary antenna connector is soldered on the PCB board in order to perform conducted tests and this temporary antenna connector is listed in the equipment list.

5 Test results and Measurement Data

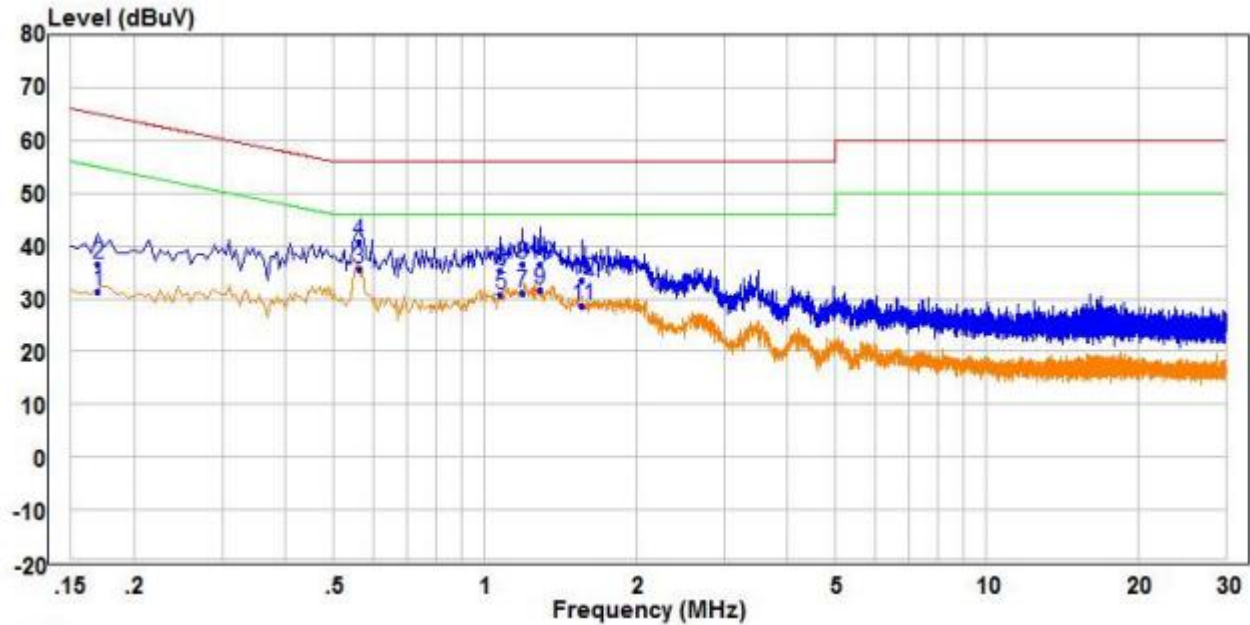
5.1 Antenna Requirement

Standard requirement:	47 CFR Part 15C Section 15.203 /247(c)
<p>15.203 requirement: An intentional radiator shall be designed to ensure that no antenna other than that furnished by the responsible party shall be used with the device. The use of a permanently attached antenna or of an antenna that uses a unique coupling to the intentional radiator, the manufacturer may design the unit so that a broken antenna can be replaced by the user, but the use of a standard antenna jack or electrical connector is prohibited.</p> <p>15.247(b) (4) requirement: The conducted output power limit specified in paragraph (b) of this section is based on the use of antennas with directional gains that do not exceed 6 dBi. Except as shown in paragraph (c) of this section, if transmitting antennas of directional gain greater than 6 dBi are used, the conducted output power from the intentional radiator shall be reduced below the stated values in paragraphs (b)(1), (b)(2), and (b)(3) of this section, as appropriate, by the amount in dB that the directional gain of the antenna exceeds 6 dBi.</p>	
EUT Antenna:	
<p>The antenna is PIFA antenna.</p> <p>The connection/connection type between the antenna to the EUT's antenna port is: unique coupling.</p> <p>This is either permanently attachment or a unique coupling that satisfies the requirement.</p>	

Exploratory Test Mode:	Non-hopping transmitting mode with all kind of modulation and all kind of data type at the lowest, middle, high channel.
Final Test Mode:	Through Pre-scan, find the DH5 of data type and GFSK modulation at the lowest channel is the worst case. Only the worst case is recorded in the report.
Test Voltage:	AC 120V/60Hz
Test Results:	Pass

Measurement Data

Live line:

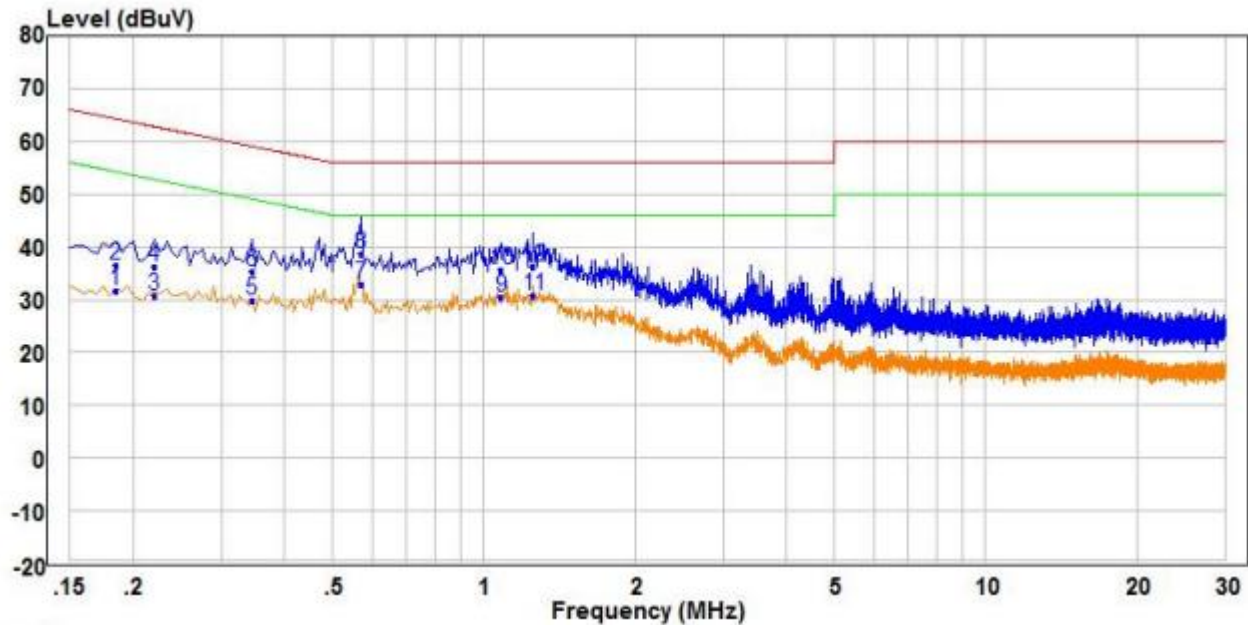


	Freq	Read	Factor	Level	Limit	Over	Remark	Pol/Phase
	MHz	dBuV	dB	dBuV	dBuV	dB		
1	0.170	21.84	9.66	31.50	54.96	-23.46	Average	Line
2	0.170	26.76	9.66	36.42	64.96	-28.54	QP	Line
3 PP	0.560	25.81	9.76	35.57	46.00	-10.43	Average	Line
4 QP	0.560	31.02	9.76	40.78	56.00	-15.22	QP	Line
5	1.075	20.73	9.90	30.63	46.00	-15.37	Average	Line
6	1.075	25.55	9.90	35.45	56.00	-20.55	QP	Line
7	1.190	21.03	10.19	31.22	46.00	-14.78	Average	Line
8	1.190	26.29	10.19	36.48	56.00	-19.52	QP	Line
9	1.290	21.16	10.41	31.57	46.00	-14.43	Average	Line
10	1.290	26.03	10.41	36.44	56.00	-19.56	QP	Line
11	1.565	17.83	10.96	28.79	46.00	-17.21	Average	Line
12	1.565	22.68	10.96	33.64	56.00	-22.36	QP	Line

Remark:

1. The following Quasi-Peak and Average measurements were performed on the EUT:
2. Final Test Level = Receiver Reading + LISN Factor + Cable Loss.
3. If the Peak value under Average limit, the Average value is not recorded in the report.

Neutral line:



	Freq	Read Level	Factor	Level	Limit Line	Over Limit	Remark	Pol/Phase
	MHz	dBuV	dB	dBuV	dBuV	dB		
1	0.185	21.92	9.63	31.55	54.26	-22.71	Average	Neutral
2	0.185	26.94	9.63	36.57	64.26	-27.69	QP	Neutral
3	0.220	21.32	9.58	30.90	52.82	-21.92	Average	Neutral
4	0.220	26.65	9.58	36.23	62.82	-26.59	QP	Neutral
5	0.345	20.20	9.54	29.74	49.08	-19.34	Average	Neutral
6	0.345	25.75	9.54	35.29	59.08	-23.79	QP	Neutral
7 PP	0.570	23.02	9.77	32.79	46.00	-13.21	Average	Neutral
8 QP	0.570	29.00	9.77	38.77	56.00	-17.23	QP	Neutral
9	1.085	20.64	9.70	30.34	46.00	-15.66	Average	Neutral
10	1.085	25.94	9.70	35.64	56.00	-20.36	QP	Neutral
11	1.255	21.11	9.71	30.82	46.00	-15.18	Average	Neutral
12	1.255	26.39	9.71	36.10	56.00	-19.90	QP	Neutral

Remark:

1. The following Quasi-Peak and Average measurements were performed on the EUT:
2. Final Test Level =Receiver Reading + LISN Factor + Cable Loss.
3. If the Peak value under Average limit, the Average value is not recorded in the report.

5.3 Other requirements Frequency Hopping Spread Spectrum System

Test Requirement:	47 CFR Part 15C Section 15.247 (a)(1), (h) requirement:
	<p>The system shall hop to channel frequencies that are selected at the system hopping rate from a Pseudorandom ordered list of hopping frequencies. Each frequency must be used equally on the average by each transmitter. The system receivers shall have input bandwidths that match the hopping channel bandwidths of their corresponding transmitters and shall shift frequencies in synchronization with the transmitted signals.</p> <p>Frequency hopping spread spectrum systems are not required to employ all available hopping channels during each transmission. However, the system, consisting of both the transmitter and the receiver, must be designed to comply with all of the regulations in this section should the transmitter be presented with a continuous data (or information) stream. In addition, a system employing short transmission bursts must comply with the definition of a frequency hopping system and must distribute its transmissions over the minimum number of hopping channels specified in this section.</p> <p>The incorporation of intelligence within a frequency hopping spread spectrum system that permits the system to recognize other users within the spectrum band so that it individually and independently chooses and adapts its hopsets to avoid hopping on occupied channels is permitted. The coordination of frequency hopping systems in any other manner for the express purpose of avoiding the simultaneous occupancy of individual hopping frequencies by multiple transmitters is not permitted.</p>
Compliance for section 15.247(a)(1)	
	<p>According to Bluetooth Core Specification, the pseudorandom sequence may be generated in a nine-stage shift register whose 5th and 9th stage outputs are added in a modulo-two addition stage. And the result is fed back to the input of the first stage. The sequence begins with the first ONE of 9 consecutive ONES; i.e. the shift register is initialized with nine ones.</p> <ul style="list-style-type: none"> • Number of shift register stages: 9 • Length of pseudo-random sequence: $2^9 - 1 = 511$ bits • Longest sequence of zeros: 8 (non-inverted signal) <div data-bbox="301 1373 1356 1523"> </div> <p><i>Linear Feedback Shift Register for Generation of the PRBS sequence</i></p> <p>An example of Pseudorandom Frequency Hopping Sequence as follow:</p> <div data-bbox="276 1621 1264 1769"> </div> <p>Each frequency used equally on the average by each transmitter.</p> <p>According to Bluetooth Core Specification, Bluetooth receivers are designed to have input and IF bandwidths that match the hopping channel bandwidths of any Bluetooth transmitters and shift frequencies in synchronization with the transmitted signals.</p>
Compliance for section 15.247(g)	
	<p>According to Bluetooth Core Specification, the Bluetooth system transmits the packet with the pseudorandom hopping frequency with a continuous data and the short burst transmission from the Bluetooth system is also transmitted under the frequency hopping system with the pseudorandom hopping frequency system.</p>

Compliance for section 15.247(h)

According to Bluetooth Core specification, the Bluetooth system incorporates with an adaptive system to detect other user within the spectrum band so that it individually and independently to avoid hopping on the occupied channels.

According to the Bluetooth Core specification, the Bluetooth system is designed not have the ability to coordinated with other FHSS System in an effort to avoid the simultaneous occupancy of individual hopping frequencies by multiple transmitter.

5.4 Radiated Spurious Emission & Restricted bands

Test Requirement:	47 CFR Part 15C Section 15.209 and 15.205				
Test Method:	ANSI C63.10: 2013				
Test Site:	Measurement Distance: 3m (Semi-Anechoic Chamber)				
Receiver Setup:	Frequency	Detector	RBW	VBW	Remark
	0.009MHz-0.090MHz	Peak	10kHz	30kHz	Peak
	0.009MHz-0.090MHz	Average	10kHz	30kHz	Average
	0.090MHz-0.110MHz	Quasi-peak	10kHz	30kHz	Quasi-peak
	0.110MHz-0.490MHz	Peak	10kHz	30kHz	Peak
	0.110MHz-0.490MHz	Average	10kHz	30kHz	Average
	0.490MHz -30MHz	Quasi-peak	10kHz	30kHz	Quasi-peak
	30MHz-1GHz	Peak	120 kHz	300kHz	Peak
	Above 1GHz	Peak	1MHz	3MHz	Peak
		Peak	1MHz	10Hz	Average
Limit:	Frequency	Field strength (microvolt/meter)	Limit (dBuV/m)	Remark	Measurement distance (m)
	0.009MHz-0.490MHz	2400/F(kHz)	-	-	300
	0.490MHz-1.705MHz	24000/F(kHz)	-	-	30
	1.705MHz-30MHz	30	-	-	30
	30MHz-88MHz	100	40.0	Quasi-peak	3
	88MHz-216MHz	150	43.5	Quasi-peak	3
	216MHz-960MHz	200	46.0	Quasi-peak	3
	960MHz-1GHz	500	54.0	Quasi-peak	3
	Above 1GHz	500	54.0	Average	3
Note: 15.35(b), Unless otherwise specified, the limit on peak radio frequency emissions is 20dB above the maximum permitted average emission limit applicable to the equipment under test. This peak limit applies to the total peak emission level radiated by the device.					

Test Setup:

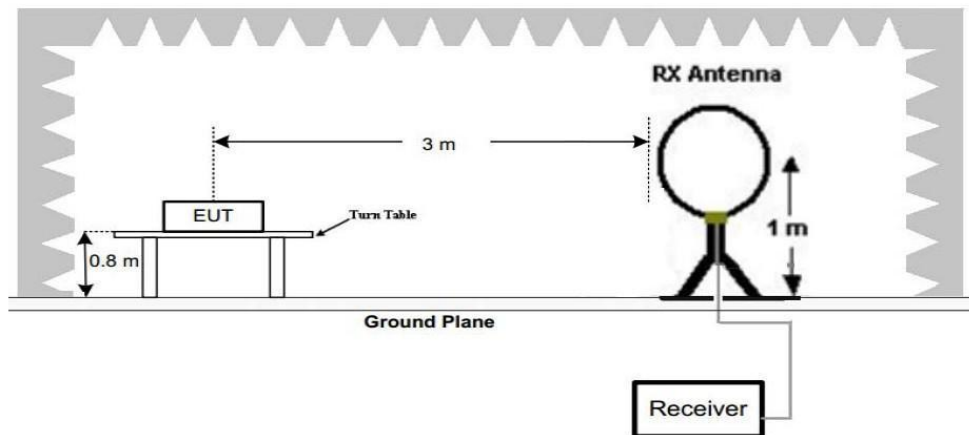


Figure 1. Below 30MHz

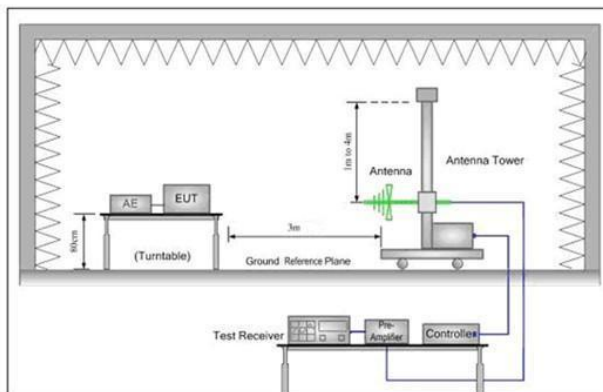


Figure 2. 30MHz to 1GHz

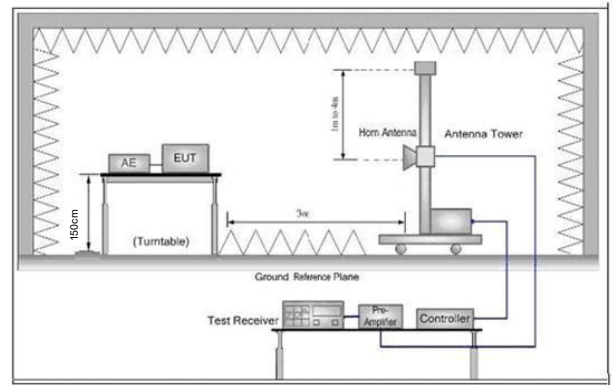


Figure 3. Above 1 GHz

Test Procedure:

- a. 1) Below 1G: The EUT was placed on the top of a rotating table 0.8 meters above the ground at a 3 meter semi-anechoic chamber. The table was rotated 360 degrees to determine the position of the highest radiation.
2) Above 1G: The EUT was placed on the top of a rotating table 1.5 meters above the ground at a 3 meter semi-anechoic chamber. The table was rotated 360 degrees to determine the position of the highest radiation.
Note: For the radiated emission test above 1GHz:
Place the measurement antenna away from each area of the EUT determined to be a source of emissions at the specified measurement distance, while keeping the measurement antenna aimed at the source of emissions at each frequency of significant emissions, with polarization oriented for maximum response. The measurement antenna may have to be higher or lower than the EUT, depending on the radiation pattern of the emission and staying aimed at the emission source for receiving the maximum signal. The final measurement antenna elevation shall be that which maximizes the emissions. The measurement antenna elevation for maximum emissions shall be restricted to a range of heights of from 1 m to 4 m above the ground or reference ground plane.
- b. The EUT was set 3 meters away from the interference-receiving antenna, which was mounted on the top of a variable-height antenna tower.
- c. The antenna height is varied from one meter to four meters above the ground to determine the maximum value of the field strength. Both horizontal and vertical polarizations of the antenna are set to make the measurement.

	<p>d. For each suspected emission, the EUT was arranged to its worst case and then the antenna was tuned to heights from 1 meter to 4 meters (for the test frequency of below 30MHz, the antenna was tuned to heights 1 meter) and the rotatable table was turned from 0 degrees to 360 degrees to find the maximum reading.</p> <p>e. The test-receiver system was set to Peak Detect Function and Specified Bandwidth with Maximum Hold Mode.</p> <p>f. If the emission level of the EUT in peak mode was 10dB lower than the limit specified, then testing could be stopped and the peak values of the EUT would be reported. Otherwise the emissions that did not have 10dB margin would be re-tested one by one using peak, quasi-peak or average method as specified and then reported in a data sheet.</p> <p>g. Test the EUT in the lowest channel (2402MHz), the middle channel (2441MHz), the Highest channel (2480MHz)</p> <p>h. The radiation measurements are performed in X, Y, Z axis positioning for Transmitting mode, and found the X axis positioning which it is the worst case.</p> <p>i. Repeat above procedures until all frequencies measured was complete.</p>
Exploratory Test Mode:	Non-hopping transmitting mode with all kind of modulation and all kind of data type Transmitting mode
Final Test Mode:	Only the worst case is recorded in the report.
Test Results:	Pass

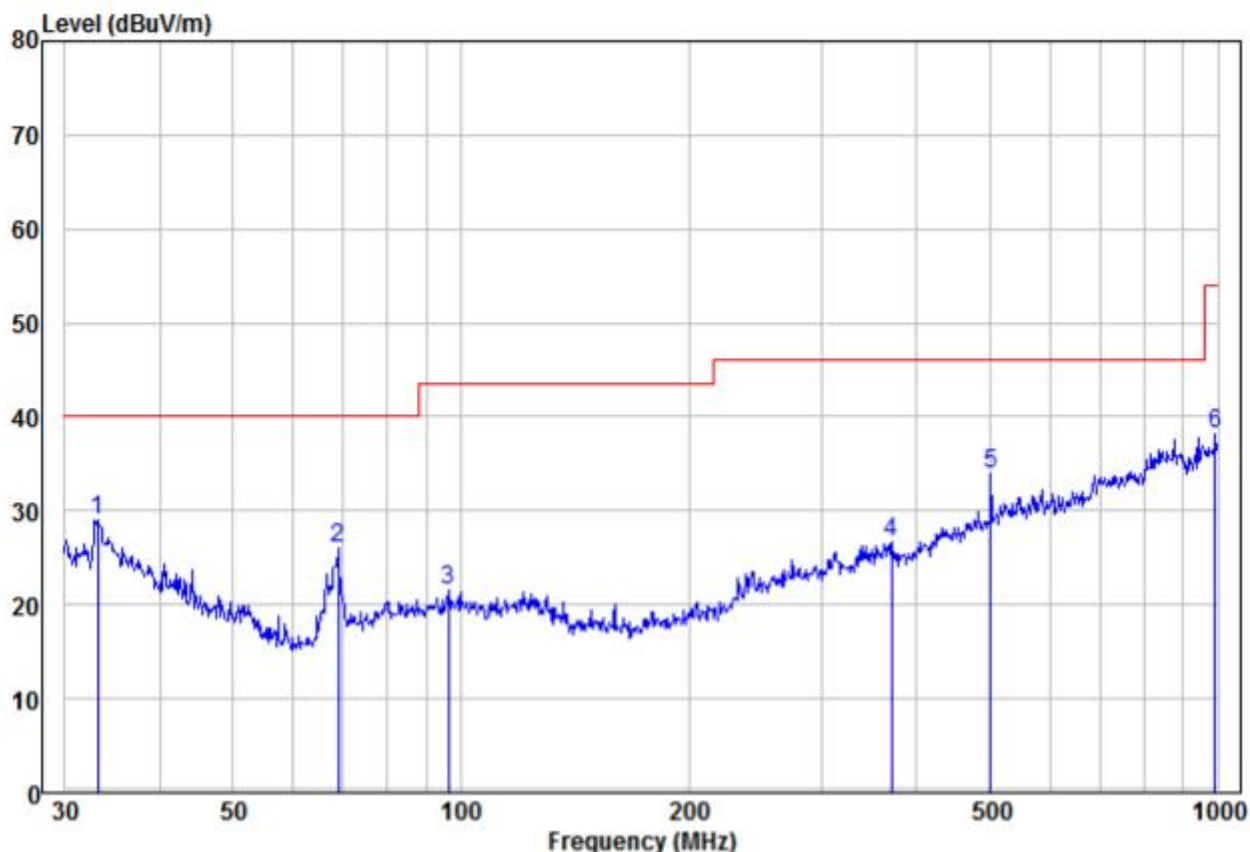
5.4.1 Radiated Emission below 1GHz

30MHz~1GHz

Test mode:

Transmitting

Vertical



		Read		Limit	Over		
	Freq	Level	Factor	Level	Line	Limit	Remark
	MHz	dBuV	dB/m	dBuV/m	dBuV/m	dB	Pol/Phase
1	pp	33.09	13.69	15.43	29.12	40.00	-10.88 Peak
2		68.87	17.41	8.68	26.09	40.00	-13.91 Peak
3		96.44	10.03	11.49	21.52	43.50	-21.98 Peak
4		370.70	9.77	17.00	26.77	46.00	-19.23 Peak
5		501.18	13.65	20.31	33.96	46.00	-12.04 Peak
6		993.01	10.74	27.52	38.26	54.00	-15.74 Peak

Remark:

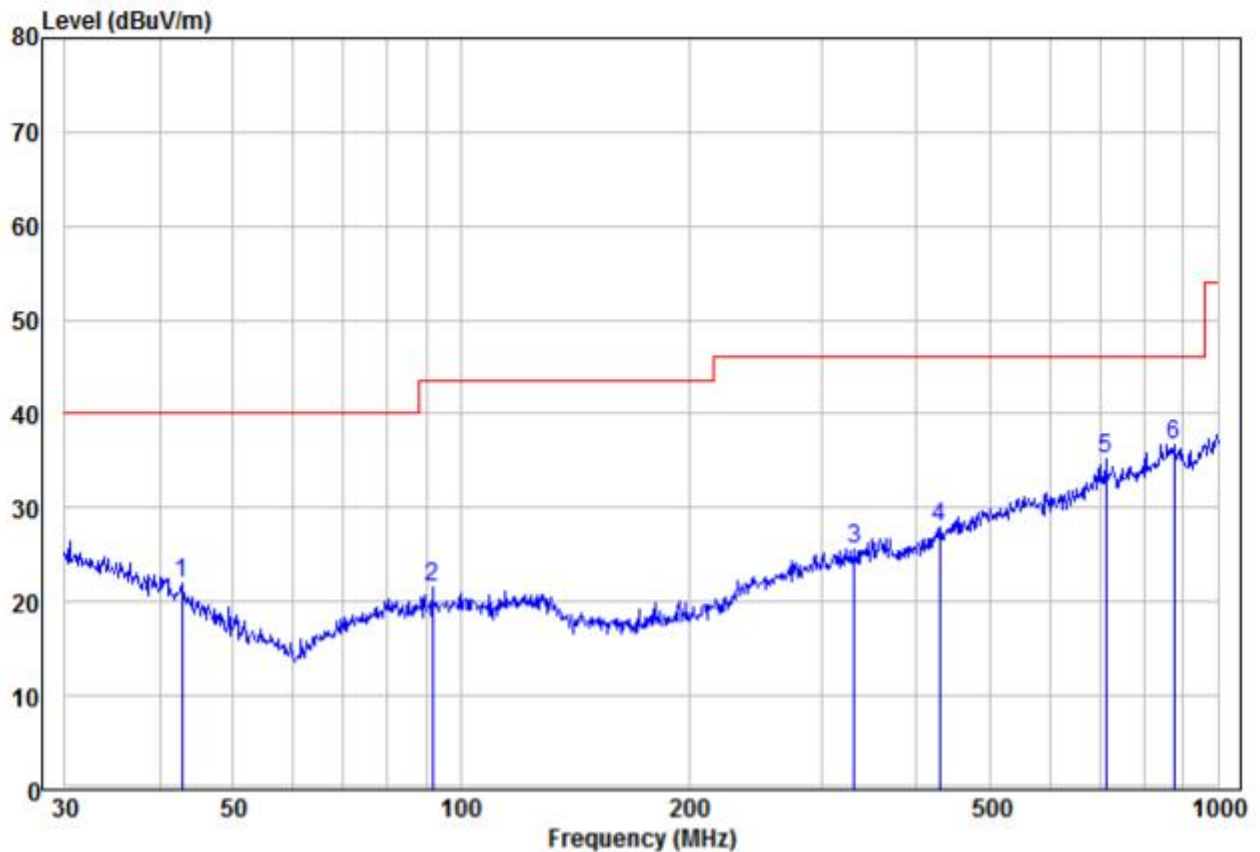
The field strength is calculated by adding the Antenna Factor, Cable Factor & Preamplifier. The basic equation with a sample calculation is as follows:

Factor= Antenna Factor + Cable Factor – Preamplifier Factor,

Level = Read Level + Factor,

Over Limit=Level-Limit Line.

Test mode:	Transmitting	Horizontal
------------	--------------	------------



	Freq	Read		Limit	Over		
	MHz	Level	Factor	Level	Line	Limit	Remark
		dBuV	dB/m	dBuV/m	dBuV/m	dB	
1	42.75	9.76	12.18	21.94	40.00	-18.06	Peak
2	91.82	10.49	11.14	21.63	43.50	-21.87	Peak
3	331.35	9.45	16.13	25.58	46.00	-20.42	Peak
4	429.52	10.05	17.88	27.93	46.00	-18.07	Peak
5	711.67	11.78	23.47	35.25	46.00	-10.75	Peak
6 pp	875.25	9.90	26.77	36.67	46.00	-9.33	Peak
							HORIZONTAL

Remark:

The field strength is calculated by adding the Antenna Factor, Cable Factor & Preamplifier. The basic equation with a sample calculation is as follows:

Factor= Antenna Factor + Cable Factor – Preamplifier Factor,

Level = Read Level + Factor,

Over Limit=Level-Limit Line.

5.4.2 Transmitter Emission above 1GHz

Worse case mode:		GFSK(DH5)		Test channel:		Lowest	
Frequency	Meter Reading	Factor	Emission Level	Limits	Over	Detector Type	Ant. Pol.
(MHz)	(dBμV)	(dB)	(dBμV/m)	(dBμV/m)	(dB)		H/V
2390	55.02	-9.2	45.82	74	-28.18	Peak	H
2400	56.15	-9.39	46.76	74	-27.24	Peak	H
4804	51.27	-4.33	46.94	74	-27.06	Peak	H
7206	50.43	1.01	51.44	74	-22.56	Peak	H
2390	55.22	-9.2	46.02	74	-27.98	Peak	V
2400	56.83	-9.39	47.44	74	-26.56	Peak	V
4804	54.94	-4.33	50.61	74	-23.39	Peak	V
7206	50.59	1.01	51.60	74	-22.40	Peak	V

Worse case mode:		GFSK(DH5)		Test channel:		Middle	
Frequency	Meter Reading	Factor	Emission Level	Limits	Over	Detector Type	Ant. Pol.
(MHz)	(dBμV)	(dB)	(dBμV/m)	(dBμV/m)	(dB)		H/V
4882	52.68	-4.11	48.57	74	-25.43	peak	H
7323	49.03	1.51	50.54	74	-23.46	peak	H
4882	52.00	-4.11	47.89	74	-26.11	peak	V
7323	50.62	1.51	52.13	74	-21.87	peak	V

Worse case mode:		GFSK(DH5)		Test channel:		Highest	
Frequency	Meter Reading	Factor	Emission Level	Limits	Over	Detector Type	Ant. Pol.
(MHz)	(dBμV)	(dB)	(dBμV/m)	(dBμV/m)	(dB)		H/V
2483.5	54.62	-9.29	45.33	74	-28.67	Peak	H
4960	50.85	-4.04	46.81	74	-27.19	Peak	H
7440	50.82	1.57	52.39	74	-21.61	Peak	H
2483.5	55.31	-9.29	46.02	74	-27.98	Peak	V
4960	48.55	-4.04	44.51	74	-29.49	Peak	V
7440	49.87	1.57	51.44	74	-22.56	Peak	V

Worse case mode:		π /4DQPSK (2DH5)		Test channel:		Lowest	
Frequency	Meter Reading	Factor	Emission Level	Limits	Over	Detector Type	Ant. Pol.
(MHz)	(dB μ V)	(dB)	(dB μ V/m)	(dB μ V/m)	(dB)		H/V
2390	55.74	-9.2	46.54	74	-27.46	Peak	H
2400	54.40	-9.39	45.01	74	-28.99	Peak	H
4804	52.10	-4.33	47.77	74	-26.23	Peak	H
7206	50.79	1.01	51.80	74	-22.20	Peak	H
2390	56.09	-9.2	46.89	74	-27.11	Peak	V
2400	56.16	-9.39	46.77	74	-27.23	Peak	V
4804	54.24	-4.33	49.91	74	-24.09	Peak	V
7206	51.07	1.01	52.08	74	-21.92	Peak	V

Worse case mode:		π /4DQPSK (2DH5)		Test channel:		Middle	
Frequency	Meter Reading	Factor	Emission Level	Limits	Over	Detector Type	Ant. Pol.
(MHz)	(dB μ V)	(dB)	(dB μ V/m)	(dB μ V/m)	(dB)		H/V
4882	51.31	-4.11	47.20	74	-26.80	peak	H
7323	49.10	1.51	50.61	74	-23.39	peak	H
4882	52.31	-4.11	48.20	74	-25.80	peak	V
7323	48.51	1.51	50.02	74	-23.98	peak	V

Worse case mode:		π /4DQPSK (2DH5)		Test channel:		Highest	
Frequency	Meter Reading	Factor	Emission Level	Limits	Over	Detector Type	Ant. Pol.
(MHz)	(dB μ V)	(dB)	(dB μ V/m)	(dB μ V/m)	(dB)		H/V
2483.5	56.20	-9.29	46.91	74	-27.09	Peak	H
4960	52.33	-4.04	48.29	74	-25.71	Peak	H
7440	48.55	1.57	50.12	74	-23.88	Peak	H
2483.5	56.12	-9.29	46.83	74	-27.17	Peak	V
4960	48.41	-4.04	44.37	74	-29.63	Peak	V
7440	49.15	1.57	50.72	74	-23.28	Peak	V

Worse case mode:		8DPSK (3DH5)		Test channel:		Lowest	
Frequency	Meter Reading	Factor	Emission Level	Limits	Over	Detector Type	Ant. Pol.
(MHz)	(dBμV)	(dB)	(dBμV/m)	(dBμV/m)	(dB)		H/V
2390	55.64	-9.2	46.44	74	-27.56	Peak	H
2400	55.17	-9.39	45.78	74	-28.22	Peak	H
4804	53.43	-4.33	49.10	74	-24.90	Peak	H
7206	50.99	1.01	52.00	74	-22.00	Peak	H
2390	55.87	-9.2	46.67	74	-27.33	Peak	V
2400	56.90	-9.39	47.51	74	-26.49	Peak	V
4804	54.53	-4.33	50.20	74	-23.80	Peak	V
7206	50.48	1.01	51.49	74	-22.51	Peak	V

Worse case mode:		8DPSK (3DH5)		Test channel:		Middle	
Frequency	Meter Reading	Factor	Emission Level	Limits	Over	Detector Type	Ant. Pol.
(MHz)	(dBμV)	(dB)	(dBμV/m)	(dBμV/m)	(dB)		H/V
4882	55.64	-9.2	46.44	74	-27.56	peak	H
7323	55.17	-9.39	45.78	74	-28.22	peak	H
4882	53.43	-4.33	49.10	74	-24.90	peak	V
7323	50.99	1.01	52.00	74	-22.00	peak	V

Worse case mode:		8DPSK (3DH5)		Test channel:		Highest	
Frequency	Meter Reading	Factor	Emission Level	Limits	Over	Detector Type	Ant. Pol.
(MHz)	(dBμV)	(dB)	(dBμV/m)	(dBμV/m)	(dB)		H/V
2483.5	55.78	-9.29	46.49	74	-27.51	Peak	H
4960	52.84	-4.04	48.80	74	-25.20	Peak	H
7440	49.68	1.57	51.25	74	-22.75	Peak	H
2483.5	54.23	-9.29	44.94	74	-29.06	Peak	V
4960	49.99	-4.04	45.95	74	-28.05	Peak	V
7440	49.19	1.57	50.76	74	-23.24	Peak	V

Remark:

- The field strength is calculated by adding the Antenna Factor, Cable Factor & Preamplifier. The basic equation with a sample calculation is as follows:
Final Test Level = Receiver Reading + Antenna Factor + Cable Factor – Preamplifier Factor
- Scan from 9kHz to 25GHz, the disturbance above 10GHz and below 30MHz was very low. As shown in this section, for frequencies above 1GHz, the field strength limits are based on average limits. However, the peak field strength of any emission shall not exceed the maximum permitted average limits specified above by more than 20 dB under any condition of modulation. So, only the peak measurements were shown in the report.

6 Photographs - EUT Test Setup

6.1 Radiated Emission

9KHz~30MHz:



30MHz~1GHz:



Above 1GHz:



6.2 Conducted Emission

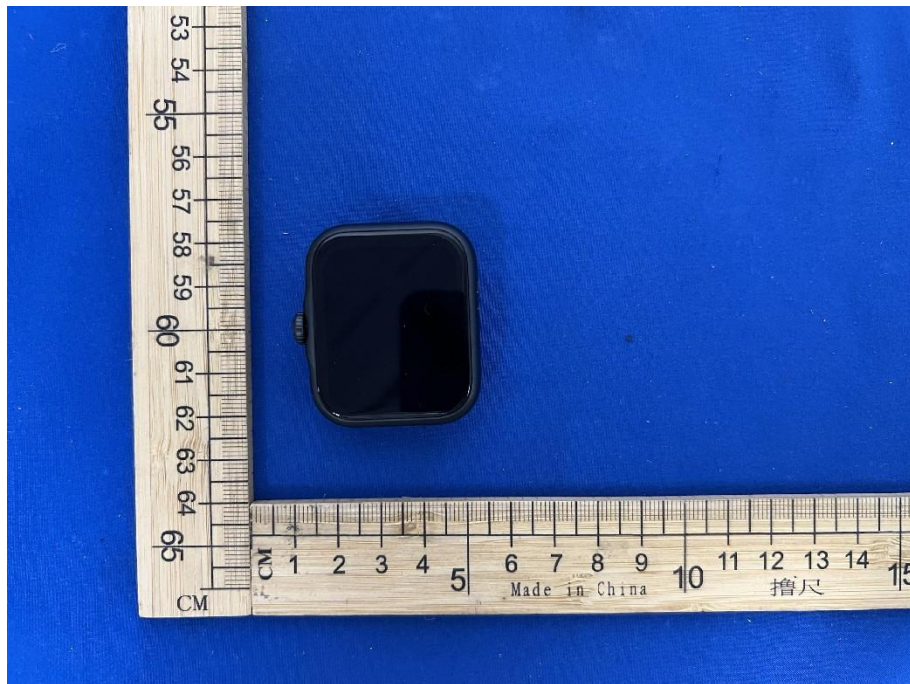


7 Photographs - EUT Constructional Details



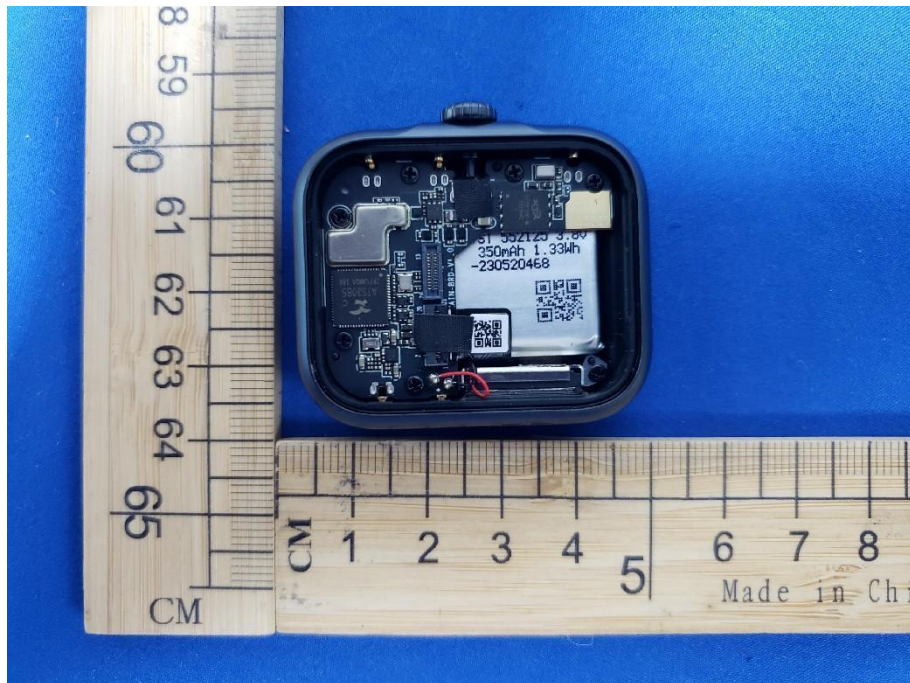
1#

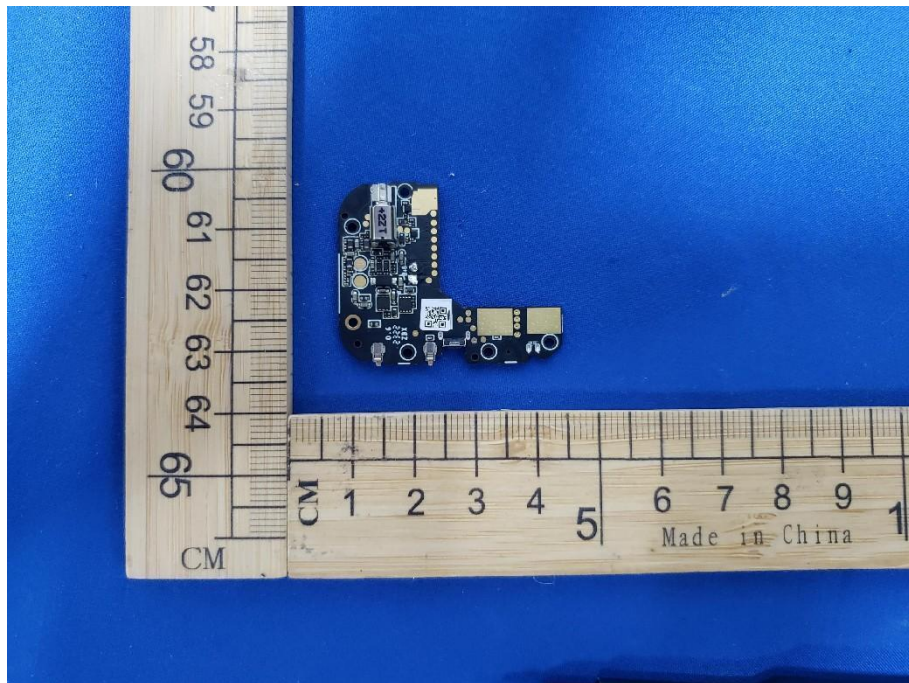
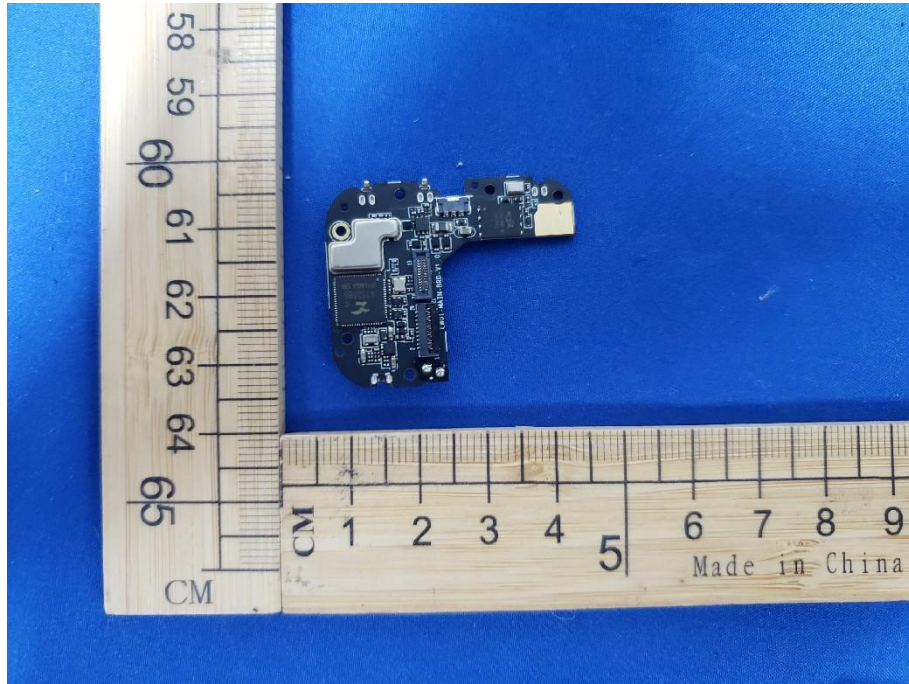


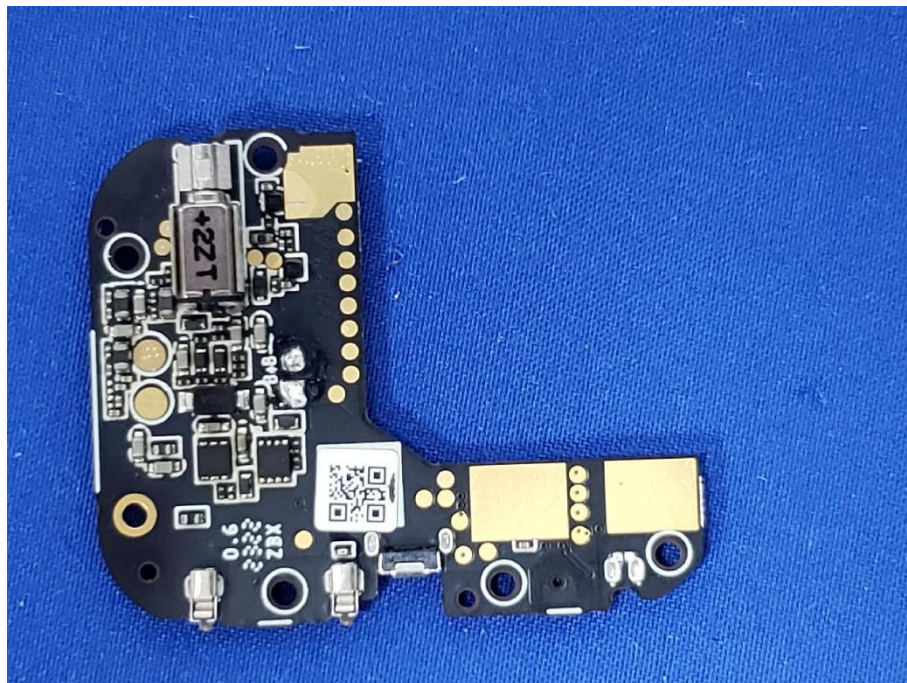
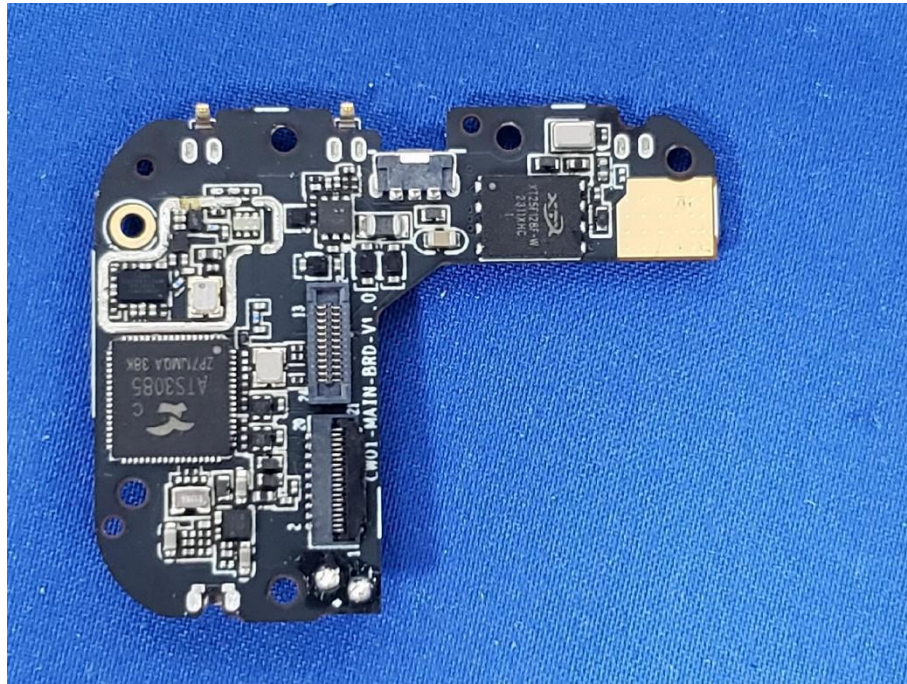


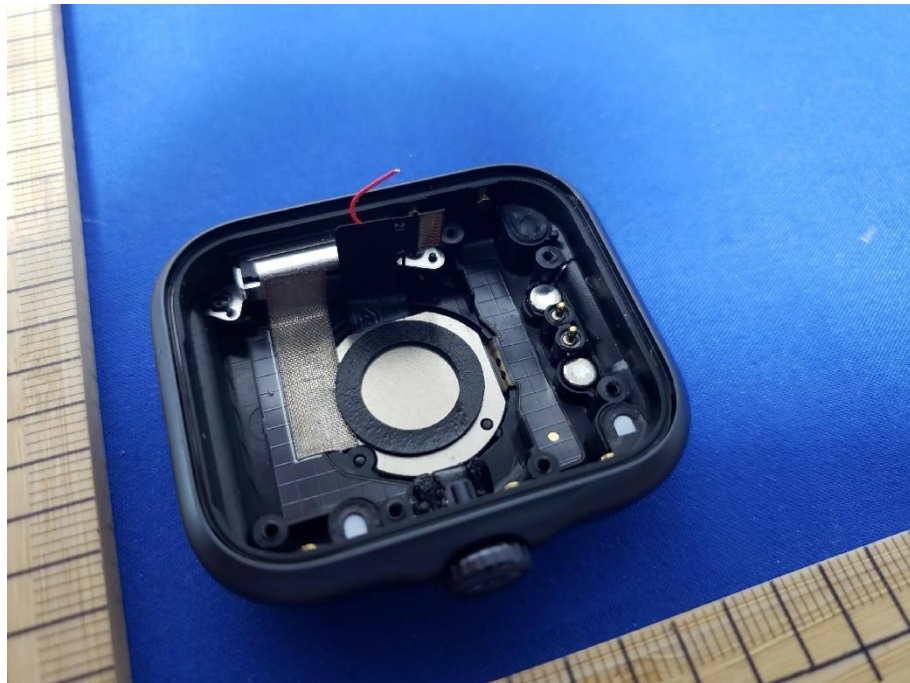


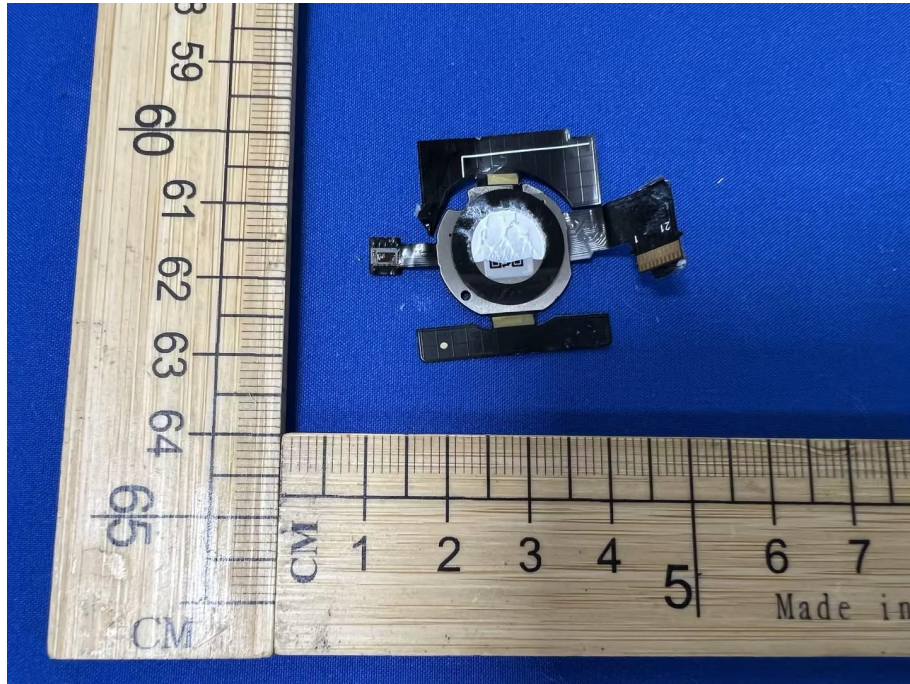


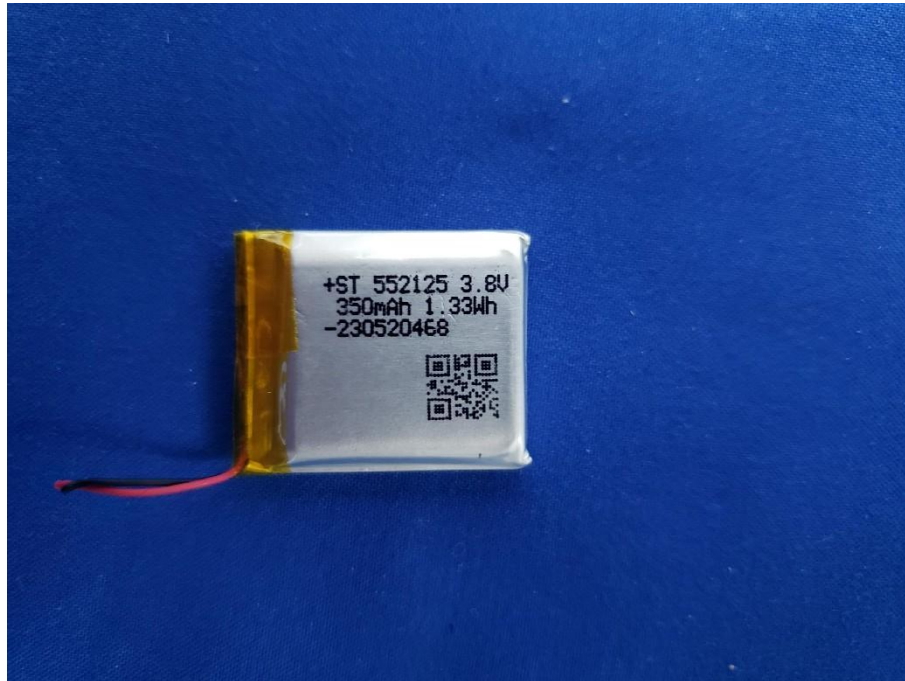




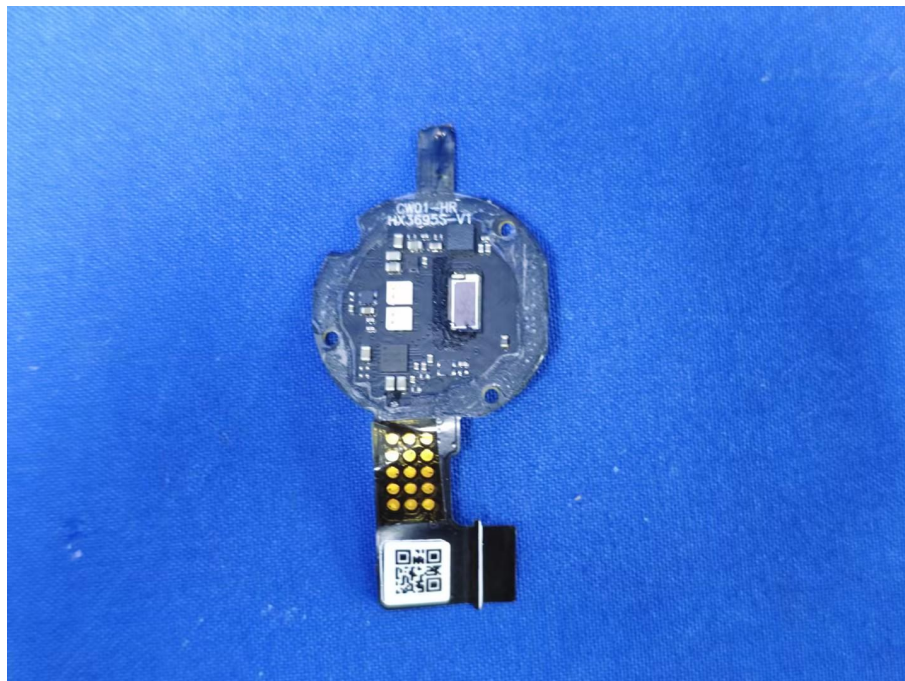


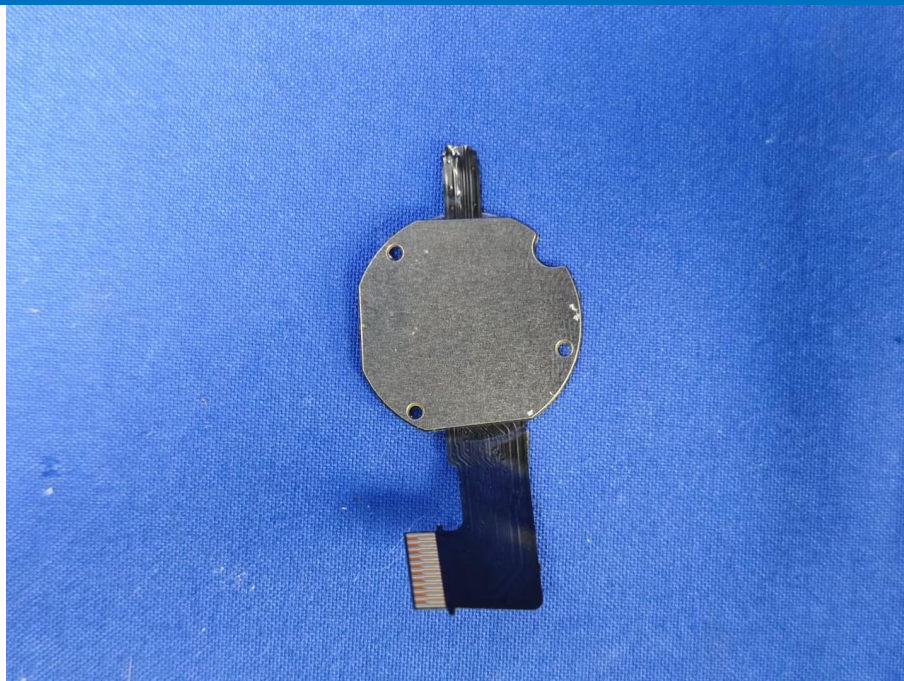






2#





*** END OF REPORT ***