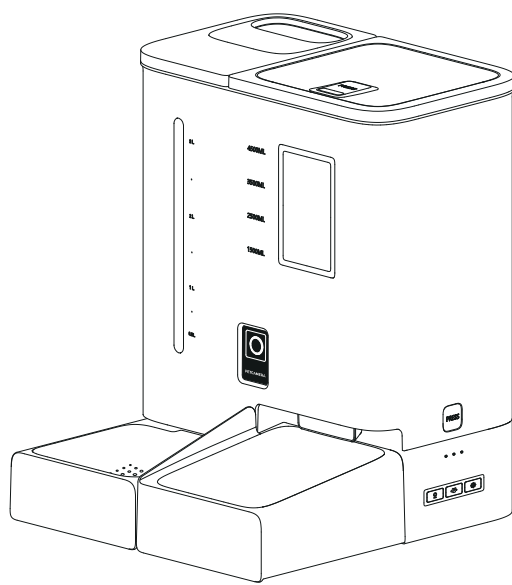


Automatic Pet Feeder

User's guide

Video Edition



Please read the instruction manual carefully before using the product.

Safety Notes

- When using this product with children, please use it with the parent.
- Do not use the product for pets that cannot reach the food bowl or have physical disabilities.
- Do not immerse the base part in water, as it may damage the control panel and other electronic components.
- Do not place any foreign objects in the product, as this may cause equipment abnormality or risk of accidental ingestion by pets.
- Do not place wet food or spoiled pet food inside the product.
- Do not disassemble or modify the product by yourself.
- If the product is malfunctioning or has damaged parts, please do not try to repair the feeder by yourself, and contact the dealer or customer service to solve the problem.
- Be sure to unplug the product when not in use or before cleaning it.
- If the power plug of this product is damp, please turn off the power at the socket and do not try to unplug the power plug.

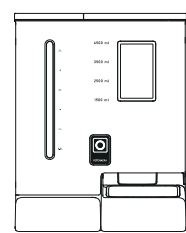
Cautions

- Please do not allow your pet to chew or swallow any of the accessories. If you are concerned about the power cord, please purchase a wire conduit (hard plastic protector) at a hardware store to protect the power cord.
- The ambient temperature for normal operation of this device is 0°C~ 40°C, please do not place the feeder in the sun or in a place where the ambient temperature does not match.
- Please use an alkaline 1 size battery for power supply. Do not use rechargeable batteries.
- Please check the battery regularly. Be sure to replace the batteries with new ones if you are traveling for a long time or on business.
- Do not lift the feeder directly from the lid, food bucket or food bowl. Use both hands to lift and carry the feeder by dragging the base while keeping the unit in an upright position.
- Please use dry food with a size range of 3-10mm. Avoid jamming or clogging of the food outlet due to oversized food.
- Please read and follow all important instructions listed on the feeder and packaging.

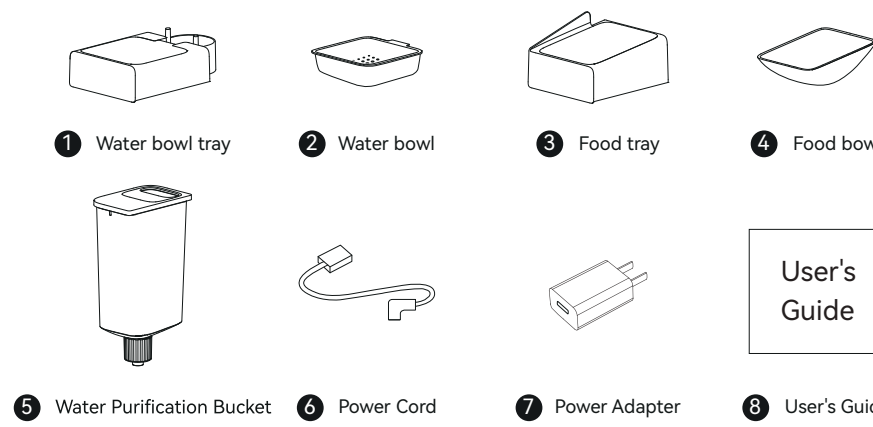
Packing List

After opening the product package, please make sure the pet feeder is intact, please check the list to make sure the accessories are complete.

Main unit



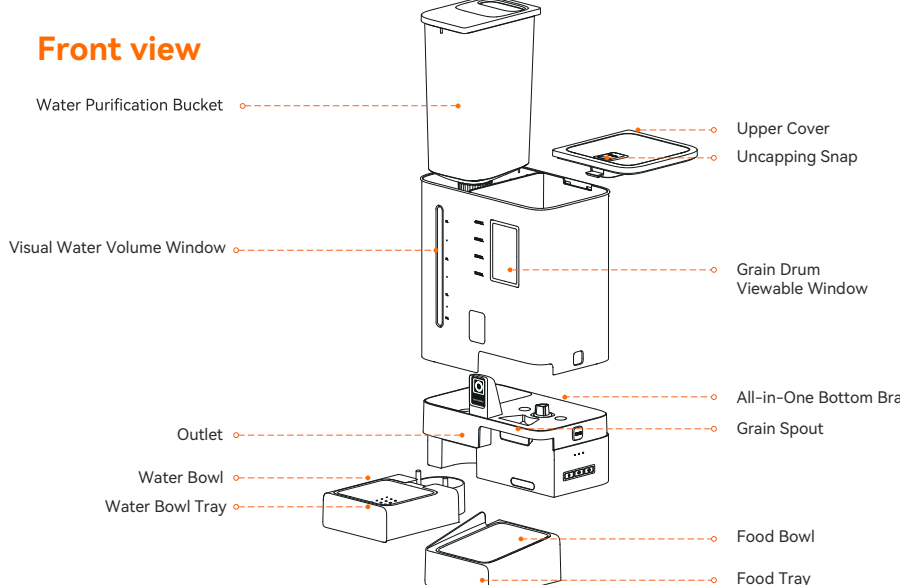
Accessories



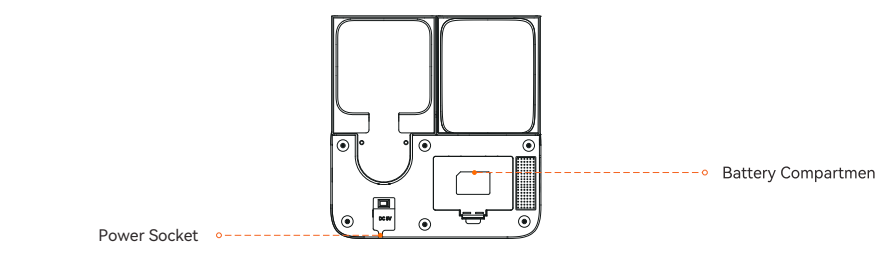
*In order to provide better products, we will make product improvements regularly. If the product pictures are slightly different from the actual product, please refer to the actual product.

Product Drawing

Front view



Bottom view



Button Description



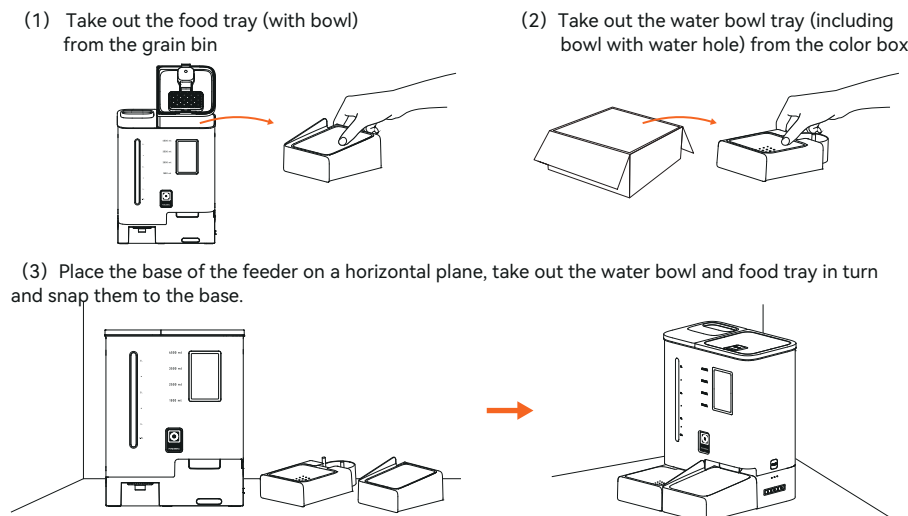
- Recording:** Press and hold for 1 second to start recording with a "di" sound, release to end recording with two "di" sounds. Recording supports up to 10 seconds.
- Feeding key:** Press it to dispense one serving of food, and it will play once when there is recording. Press the button for 30 seconds without operation, the button will be locked with a "di" sound, press and hold the button again for 3 seconds and the button will be unlocked with two "di" sound.
- Reset:** Press and hold the key for 6 seconds to make a "di" sound, the device will be reset and the network information, feeding records and recording data will be cleared. Under the unlocked state, you can press and hold the key [di] to restore the factory settings; under the locked state, any key cannot be operated.

Notes:
1) The key is automatically locked without operation for 30 seconds.
2) Key use needs to be in key unlocked state to be effective.

| Indicator light color | Indicator Signal | Device Status |
|-----------------------|------------------|--------------------------------------|
| White | Flashing | Networking in progress |
| | Bright | Network Connection Successful |
| Red | Fast flashing | Software Upgrade Abnormal |
| | Slow flashing | Motor blocked / Grain outlet blocked |
| | Bright | Battery low |

Notes:
When the device malfunctions (low battery, motor blocked, grain outlet blocked) App will push abnormal reminder

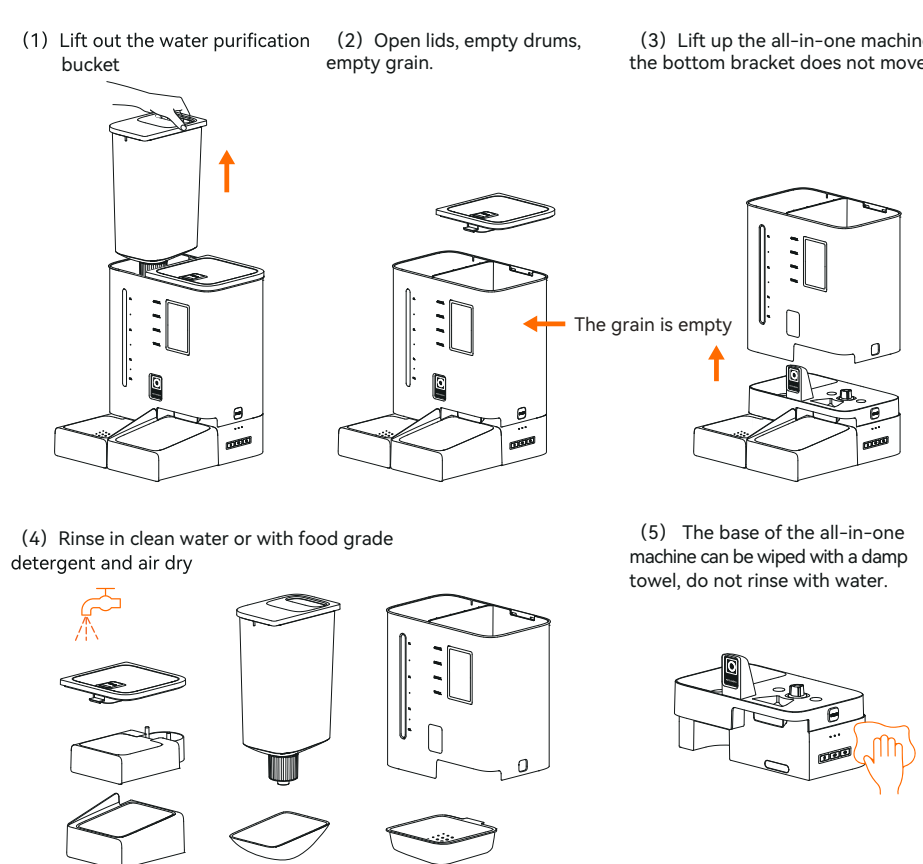
Installation sequence



Maintenance instructions

- For your pet's health, it is recommended to clean the feeder regularly.
- You can clean the product when there is scale in the water tank, the food bucket starts to get dirty and there is a lot of loose food in the food chute. The top cover of the food, food bucket, water bucket and food bowl can be disassembled directly, and can be rinsed out directly with water.
- The electronic main board at the bottom is not removable, please wipe it off with a cloth or wet paper towel.
- Please do not put the product into the dishwasher, otherwise it will be permanently damaged!

Cleaning instructions



Specification

Water Tank Capacity: 4L
Food Tank Capacity: 5L
Power supply: DC 5V/1A
Power adapter: 3 alkaline 1 batteries (batteries need to be purchased)Power supply adapted to AC100-240V input, DC5V output
Product weight: 2.8kg
Packing size: 31.7*19.5*43.5cm

FCC Caution:
Any Changes or modifications not expressly approved by the party responsible for compliance could void the user's authority to operate the equipment.

This device complies with part 15 of the FCC Rules. Operation is subject to the following two conditions: (1) This device may not cause harmful interference, and (2) this device must accept any interference received, including interference that may cause undesired operation.

IMPORTANT NOTE:

Note: This equipment has been tested and found to comply with the limits for a Class B digital device, pursuant to part 15 of the FCC Rules. These limits are designed to provide reasonable protection against harmful interference in a residential installation. This equipment generates, uses and can radiate radio frequency energy and, if not installed and used in accordance with the instructions, may cause harmful interference to radio communications. However, there is no guarantee that interference will not occur in a particular installation. If this equipment does cause harmful interference to radio or television reception, which can be determined by turning the equipment off and on, the user is encouraged to try to correct the interference by one or more of the following measures:

- Reorient or relocate the receiving antenna.
- Increase the separation between the equipment and receiver.
- Connect the equipment into an outlet on a circuit different from that to which the receiver is connected.
- Consult the dealer or an experienced radio/TV technician for help.

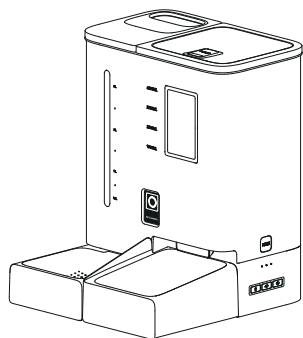
FCC Radiation Exposure Statement:
This equipment complies with FCC radiation exposure limits set forth for an uncontrolled environment. This equipment should be installed and operated with minimum distance 20cm between the radiator and your body.

Service Phone: 400-6611-508
BD-041-D

Instructions for Use

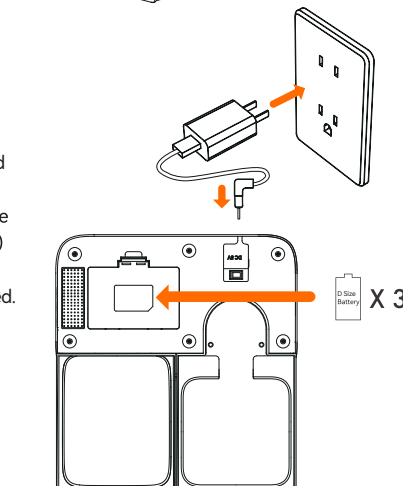
01 | Assembly

- Complete the installation according to the installation sequence.



02 | Connect the power supply

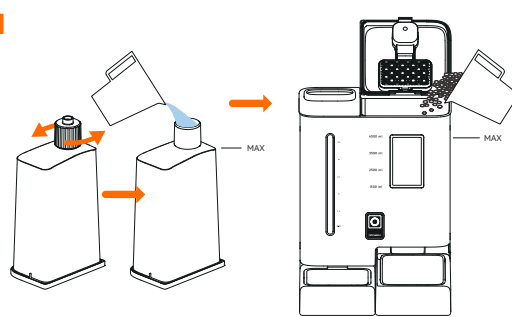
- Plug the 5V/1A power adapter into a wall outlet and connect the unit.
- Open the battery compartment at the bottom of the device and install 3 alkaline AA batteries (not necessary) to prevent power outage.
- The LED lights up to indicate that the feeder is energized.



- Notes:
- Batteries need to be purchased by yourself.
 - Make sure all parts are clean and completely dry before turning on the power.

03 | Pour water and pet food

- Start by unscrewing the spout lid, adding clean water to the left bucket, dry pet food to fill the food bucket, stabilize the tank, and close the lid of the food bucket.
- Do not use canned, wet or damp pet food.
- According to the number of pets fed, observe the water level window at appropriate intervals and add sufficient amount of clean water.



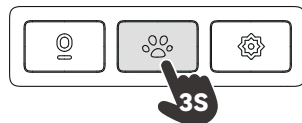
04 | Recording

- Press and hold the recording button for one second, start recording when you hear a "di" sound, release it to end the recording with two "di". The recording can be up to 10 seconds long and you can change your recording each time you repeat the process.
- In the case of already recorded, short press once to play one recording.
- After food out, play 1 recording to remind your pet to eat.



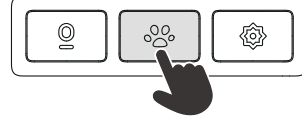
05 | Lock/Unlock

- 30 seconds key no operation "di" a key to lock, long press [di] again for 3 seconds "di" two sound key to unlock.
- Unlocked state can long press the key [di] to restore the factory settings.
- Notes:
1) Locked state of any key can not be operated, must be unlocked to normal use.
2) The locked state does not affect the operation of the App.



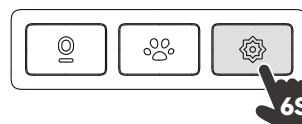
06 | Feeding

- Manual feeding: one short press will produce one portion of food, and when there is a recording, the recording will be played once after the food is produced.
- Notes:
The feeding schedule will not be affected.



07 | Reset

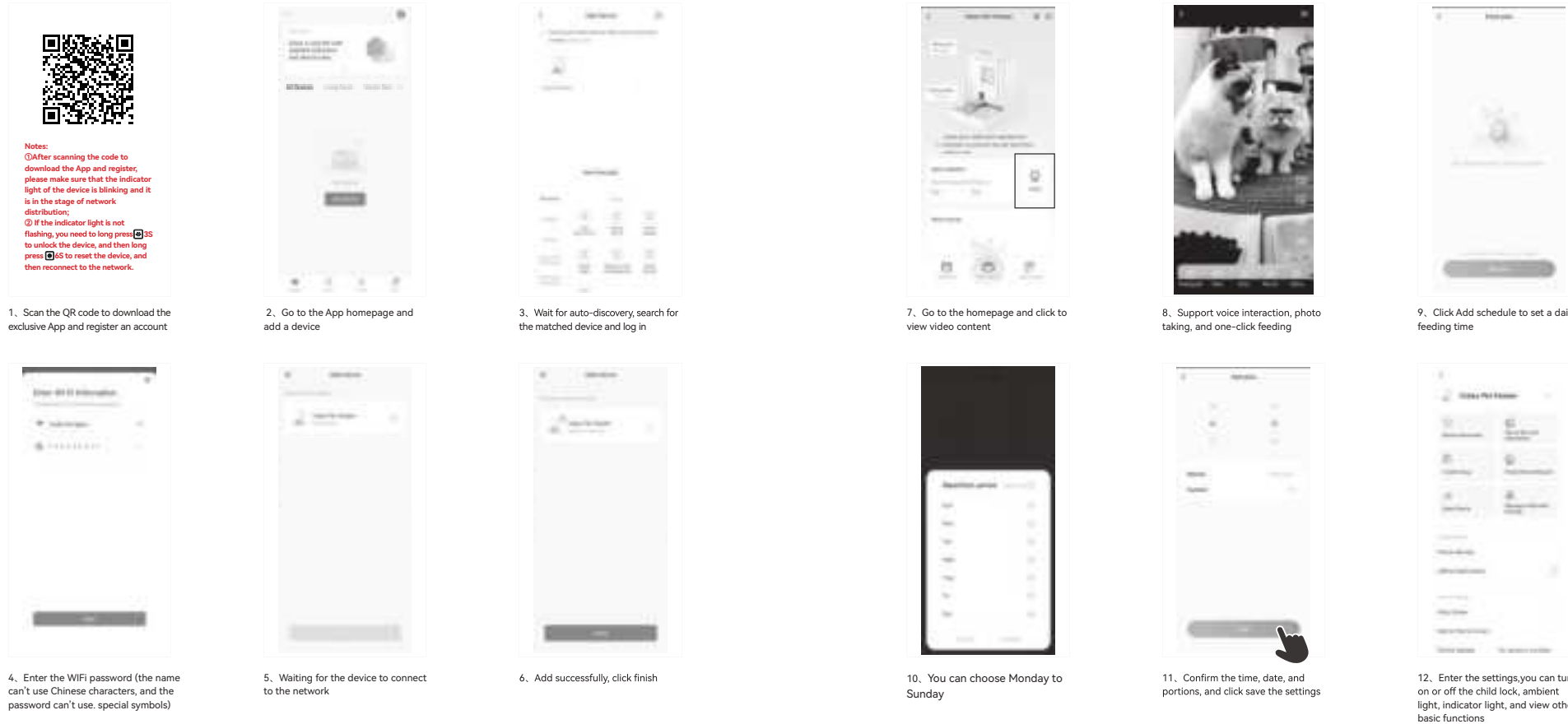
- Press and hold for 6 seconds to make a "di" sound, the device will restore the factory settings, and the network information, feeding plan and recording data will be cleared.



08 | Fault alarm

- Grain blockage detection: before feeding, the feeder will detect the grain channel, in case of grain channel blockage, in order not to aggravate the problem, the equipment will not perform feeding (including manual feeding and scheduled feeding), until the grain channel is unblocked, the fault is lifted, the equipment can operate normally.

Smart Life APP Specific Operations



Simple Troubleshooting

Problem Solution

- Q: I press any button and no response**
A: The buttons will be locked automatically when there is no operation for 30 seconds, please press and hold [di] for 3 seconds to unlock the buttons.
- Q: App video can not be displayed normally**
A: Please make sure that the environment where the device is located has a good network.
- Q: App can't connect to the feeder**
A: 1) Please check if the Wi-Fi name and password are in Chinese or longer than 12 digits, Both 2.4ghz and 5ghz wifi are support.
2) Please restart your phone, close the non-system software that starts automatically on boot, turn on the Bluetooth and positioning of your phone, and try again to reconnect.
- Q: The feeder is not allowed to dispense food or does not dispense food**
A: Please check whether there is too much grain in the food bowl or it causes blockage of the grain channel, if so, please clean the grain channel and the food outlet in time; when using battery power supply, please check whether the battery is dead or not, and whether the battery is leaking liquid or not.
- Q: Feeder display offline**
A: Please check whether the feeder is more than 10 meters away from your home router (effective distance 10 meters), try not to separate walls in between, according to the characteristics of Wi-Fi, the Wi-Fi signal across the wall will drop sharply, and the connection will appear unstable, which will lead to the device being offline.
- Q: No response to power on**
A: Please make sure the power is plugged in. If the check is correct and the device still does not power on normally, please contact your dealer or customer service in time.