

Appendix B

Detailed Test Results

1. LTE
LTE Band 38 for Next to the mouth & Extremity
LTE Band 41 for Next to the mouth & Extremity
2. WIFI
WIFI 2.4G for Next to the mouth & Extremity

Unless otherwise stated the results shown in this test report refer only to the sample(s) tested and such sample(s) are retained for 90 days only.
除非另有說明，此報告結果僅對測試之樣品負責，同時此樣品僅保留90天。本報告未經本公司書面許可，不可部份複製。

This document is issued by the Company subject to its General Conditions of Service printed overleaf, available on request or accessible at <http://www.sgs.com.tw/Terms-and-Conditions> and for electronic format documents, subject to Terms and Conditions for Electronic Documents at <http://www.sgs.com.tw/Terms-and-Conditions>. Attention is drawn to the limitation of liability, indemnification and jurisdiction issues defined therein. Any holder of this document is advised that information contained hereon reflects the Company's findings at the time of its intervention only and within the limits of Client's instructions, if any. The Company's sole responsibility is to its Client and this document does not exonerate parties to a transaction from exercising all their rights and obligations under the transaction documents. This document cannot be reproduced except in full, without prior written approval of the Company. Any unauthorized alteration, forgery or falsification of the content or appearance of this document is unlawful and offenders may be prosecuted to the fullest extent of the law.

Test Laboratory: SGS-SAR Lab

OW19W12 LTE Band 38 20M QPSK 1RB50 38150CH Next to the mouth 10mm

DUT: OW19W12; Type: OPPO Watch; Serial: 11bb3a5c

Communication System: UID 0, LTE-TDD BW 20MHz (0); Frequency: 2610 MHz; Duty Cycle: 1:1.58

Medium: HSL2600; Medium parameters used: $f = 2610$ MHz; $\sigma = 1.997$ S/m; $\epsilon_r = 39.416$; $\rho = 1000$ kg/m³

Phantom section: Flat Section

DASY 5 Configuration:

- Probe: EX3DV4 - SN3923; ConvF(7.74, 7.74, 7.74); Calibrated: 2019-10-22;
- Sensor-Surface: 1.4mm (Mechanical Surface Detection)
- Electronics: DAE4 Sn896; Calibrated: 2019-09-18
- Phantom: SAM 2; Type: SAM; Serial: 1913
- DASY52 52.10.3(1513); SEMCAD X 14.6.10(7331)

Configuration/Body/Area Scan (8x8x1): Measurement grid: $dx=12$ mm, $dy=12$ mm

Maximum value of SAR (measured) = 0.247 W/kg

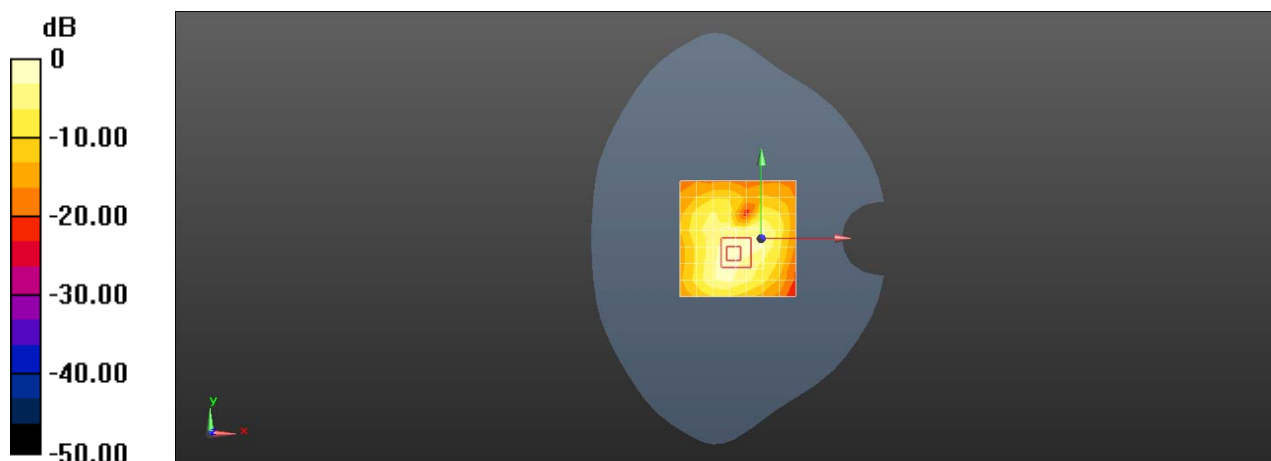
Configuration/Body/Zoom Scan (7x7x7)/Cube 0: Measurement grid: $dx=5$ mm, $dy=5$ mm, $dz=5$ mm

Reference Value = 7.556 V/m; Power Drift = 0.05 dB

Peak SAR (extrapolated) = 0.336 W/kg

SAR(1 g) = 0.182 W/kg; SAR(10 g) = 0.086 W/kg

Maximum value of SAR (measured) = 0.276 W/kg



0 dB = 0.276 W/kg = -5.59 dBW/kg

Test Laboratory: SGS-SAR Lab

OW19W12 LTE Band 38 20M QPSK 1RB50 38150CH Back side 0mm

DUT: OW19W12; Type: OPPO Watch; Serial: 11bb3a5c

Communication System: UID 0, LTE-TDD BW 20MHz (0); Frequency: 2610 MHz; Duty Cycle: 1:1.58

Medium: HSL2600; Medium parameters used: $f = 2610$ MHz; $\sigma = 1.997$ S/m; $\epsilon_r = 39.416$; $\rho = 1000$ kg/m³

Phantom section: Flat Section

DASY 5 Configuration:

- Probe: EX3DV4 - SN3923; ConvF(7.74, 7.74, 7.74); Calibrated: 2019-10-22;
- Sensor-Surface: 1.4mm (Mechanical Surface Detection)
- Electronics: DAE4 Sn896; Calibrated: 2019-09-18
- Phantom: SAM 2; Type: SAM; Serial: 1913
- DASY52 52.10.3(1513); SEMCAD X 14.6.10(7331)

Configuration/Body/Area Scan (8x8x1): Measurement grid: $dx=12$ mm, $dy=12$ mm

Maximum value of SAR (measured) = 3.76 W/kg

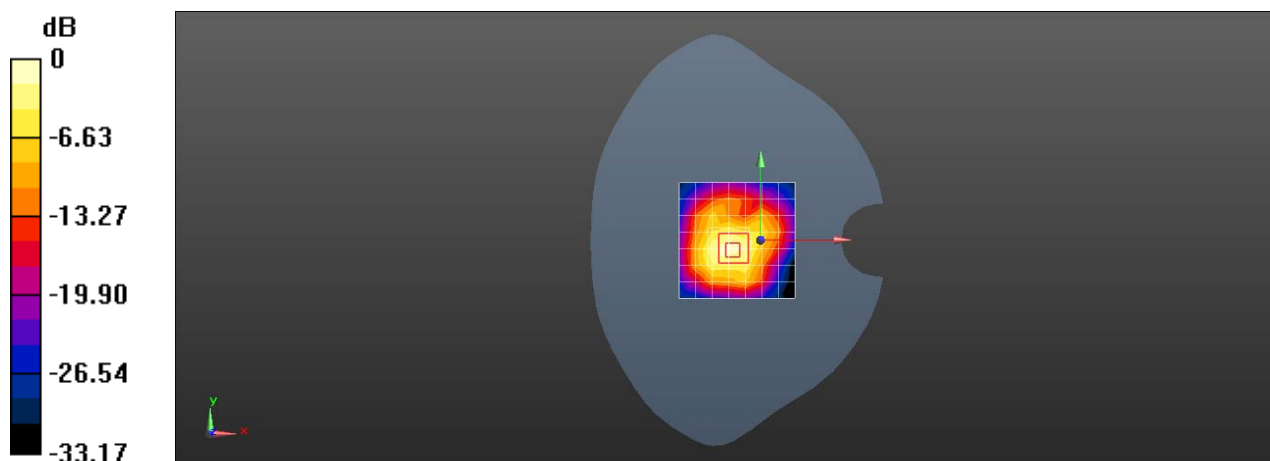
Configuration/Body/Zoom Scan (7x7x7)/Cube 0: Measurement grid: $dx=5$ mm, $dy=5$ mm, $dz=5$ mm

Reference Value = 29.47 V/m; Power Drift = 0.03 dB

Peak SAR (extrapolated) = 4.86 W/kg

SAR(1 g) = 2.52 W/kg; SAR(10 g) = 1.07 W/kg

Maximum value of SAR (measured) = 3.80 W/kg



0 dB = 3.80 W/kg = 5.80 dBW/kg

Test Laboratory: SGS-SAR Lab

OW19W12 LTE Band 41 20M QPSK 1RB50 40673CH Next to the mouth 10mm

DUT: OW19W12; Type: OPPO Watch; Serial: 11bb3a5c

Communication System: UID 0, LTE-TDD BW 20MHz (0); Frequency: 2598.3 MHz; Duty Cycle: 1:1.58

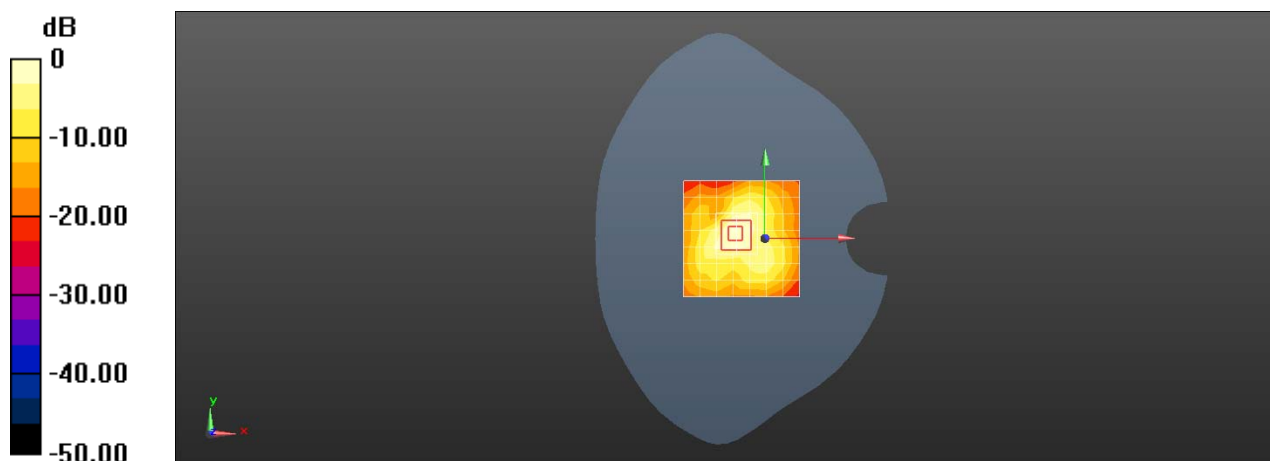
Medium: HSL2600; Medium parameters used (interpolated): $f = 2598.3$ MHz; $\sigma = 1.993$ S/m; $\epsilon_r = 39.432$; $\rho = 1000$ kg/m³
Phantom section: Flat Section

DASY 5 Configuration:

- Probe: EX3DV4 - SN3923; ConvF(7.74, 7.74, 7.74); Calibrated: 2019-10-22;
- Sensor-Surface: 1.4mm (Mechanical Surface Detection)
- Electronics: DAE4 Sn896; Calibrated: 2019-09-18
- Phantom: SAM 2; Type: SAM; Serial: 1913
- DASY52 52.10.3(1513); SEMCAD X 14.6.10(7331)

Configuration/Body/Area Scan (8x8x1): Measurement grid: $dx=12$ mm, $dy=12$ mm
Maximum value of SAR (measured) = 0.452 W/kg

Configuration/Body/Zoom Scan (7x7x7)/Cube 0: Measurement grid: $dx=5$ mm, $dy=5$ mm, $dz=5$ mm
Reference Value = 11.91 V/m; Power Drift = 0.03 dB
Peak SAR (extrapolated) = 0.595 W/kg
SAR(1 g) = 0.318 W/kg; SAR(10 g) = 0.153 W/kg
Maximum value of SAR (measured) = 0.486 W/kg



0 dB = 0.486 W/kg = -3.13 dBW/kg

Test Laboratory: SGS-SAR Lab

OW19W12 LTE Band 41 20M QPSK 1RB50 40673CH Back side 0mm

DUT: OW19W12; Type: OPPO Watch; Serial: 11bb3a5c

Communication System: UID 0, LTE-TDD BW 20MHz (0); Frequency: 2598.3 MHz; Duty Cycle: 1:1.58

Medium: HSL2600; Medium parameters used (interpolated): $f = 2598.3$ MHz; $\sigma = 1.993$ S/m; $\epsilon_r = 39.432$; $\rho = 1000$ kg/m³
Phantom section: Flat Section

DASY 5 Configuration:

- Probe: EX3DV4 - SN3923; ConvF(7.74, 7.74, 7.74); Calibrated: 2019-10-22;
- Sensor-Surface: 1.4mm (Mechanical Surface Detection)
- Electronics: DAE4 Sn896; Calibrated: 2019-09-18
- Phantom: SAM 2; Type: SAM; Serial: 1913
- DASY52 52.10.3(1513); SEMCAD X 14.6.10(7331)

Configuration/Body/Area Scan (8x8x1): Measurement grid: dx=12mm, dy=12mm
Maximum value of SAR (measured) = 1.89 W/kg

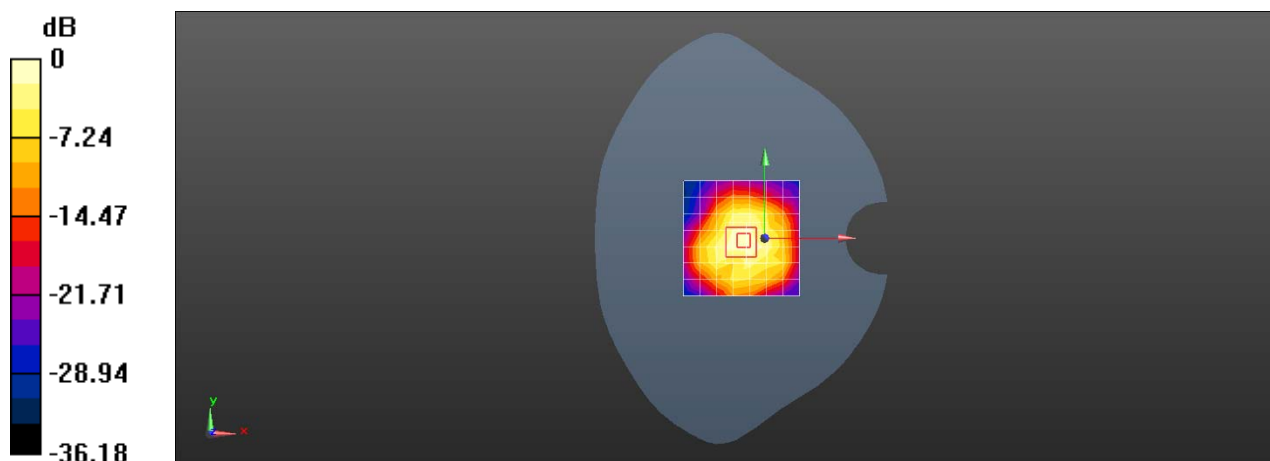
Configuration/Body/Zoom Scan (7x7x7)/Cube 0: Measurement grid: dx=5mm, dy=5mm, dz=5mm

Reference Value = 29.31 V/m; Power Drift = -0.18 dB

Peak SAR (extrapolated) = 2.49 W/kg

SAR(1 g) = 1.46 W/kg; SAR(10 g) = 0.685 W/kg

Maximum value of SAR (measured) = 2.09 W/kg



0 dB = 2.09 W/kg = 3.20 dBW/kg

Test Laboratory: SGS-SAR Lab

OW19W12 WIFI 2.4G 802.11b 11CH Next to the mouth 10mm

DUT: OW19W12; Type: OPPO Watch; Serial: 11bb3a5c

Communication System: UID 0, WI-FI(2.4GHz) (0); Frequency: 2462 MHz;Duty Cycle: 1:1.005

Medium: HSL2450;Medium parameters used: $f = 2462$ MHz; $\sigma = 1.842$ S/m; $\epsilon_r = 39.873$; $\rho = 1000$ kg/m³

Phantom section: Flat Section

DASY 5 Configuration:

- Probe: EX3DV4 - SN3923; ConvF(7.87, 7.87, 7.87); Calibrated: 2019-10-22;
- Sensor-Surface: 1.4mm (Mechanical Surface Detection)
- Electronics: DAE4 Sn896; Calibrated: 2019-09-18
- Phantom: SAM 2; Type: SAM; Serial: 1913
- DASY52 52.10.3(1513); SEMCAD X 14.6.10(7331)

Configuration/Body/Area Scan (8x8x1): Measurement grid: dx=12mm, dy=12mm

Maximum value of SAR (measured) = 0.284 W/kg

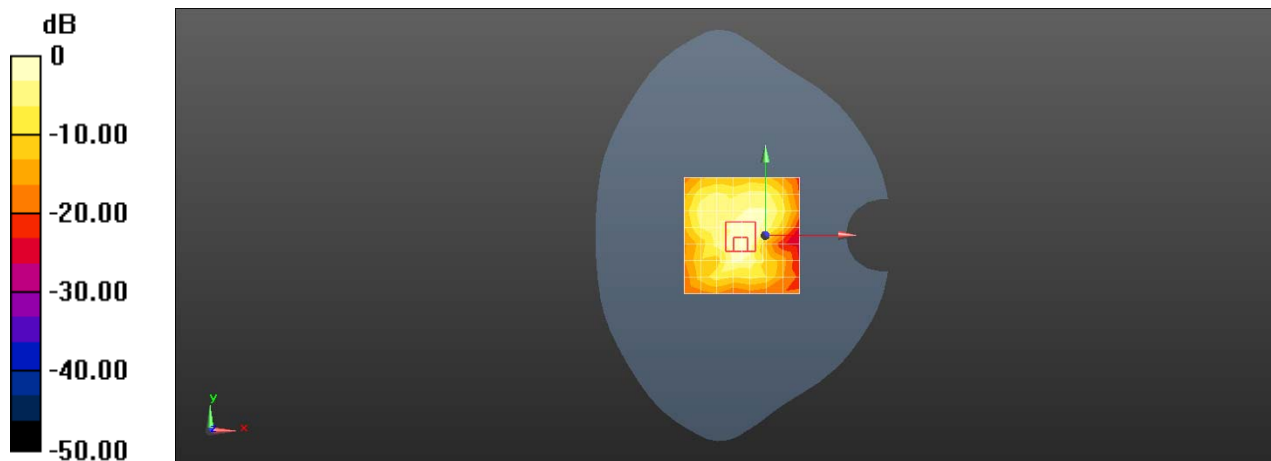
Configuration/Body/Zoom Scan (7x7x7)/Cube 0: Measurement grid: dx=5mm, dy=5mm, dz=5mm

Reference Value = 10.86 V/m; Power Drift = -0.06 dB

Peak SAR (extrapolated) = 0.397 W/kg

SAR(1 g) = 0.197 W/kg; SAR(10 g) = 0.095 W/kg

Maximum value of SAR (measured) = 0.310 W/kg



0 dB = 0.310 W/kg = -5.09 dBW/kg

Test Laboratory: SGS-SAR Lab

OW19W12 WIFI 2.4G 802.11b 11CH Back side 0mm

DUT: OW19W12; Type: OPPO Watch; Serial: 11bb3a5c

Communication System: UID 0, WI-FI(2.4GHz) (0); Frequency: 2462 MHz; Duty Cycle: 1:1.005

Medium: HSL2450; Medium parameters used: $f = 2462$ MHz; $\sigma = 1.842$ S/m; $\epsilon_r = 39.873$; $\rho = 1000$ kg/m³

Phantom section: Flat Section

DASY 5 Configuration:

- Probe: EX3DV4 - SN3923; ConvF(7.87, 7.87, 7.87); Calibrated: 2019-10-22;
- Sensor-Surface: 1.4mm (Mechanical Surface Detection)
- Electronics: DAE4 Sn896; Calibrated: 2019-09-18
- Phantom: SAM 2; Type: SAM; Serial: 1913
- DASY52 52.10.3(1513); SEMCAD X 14.6.10(7331)

Configuration/Body/Area Scan (8x8x1): Measurement grid: dx=12mm, dy=12mm

Maximum value of SAR (measured) = 1.59 W/kg

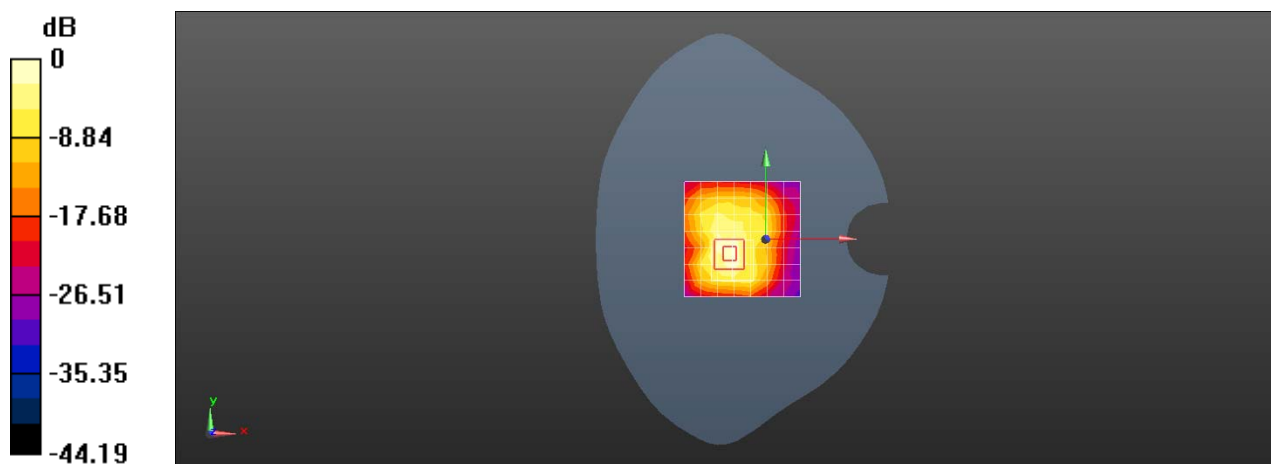
Configuration/Body/Zoom Scan (7x7x7)/Cube 0: Measurement grid: dx=5mm, dy=5mm, dz=5mm

Reference Value = 16.58 V/m; Power Drift = -0.07 dB

Peak SAR (extrapolated) = 2.46 W/kg

SAR(1 g) = 1.14 W/kg; SAR(10 g) = 0.471 W/kg

Maximum value of SAR (measured) = 1.80 W/kg



0 dB = 1.80 W/kg = 2.55 dBW/kg