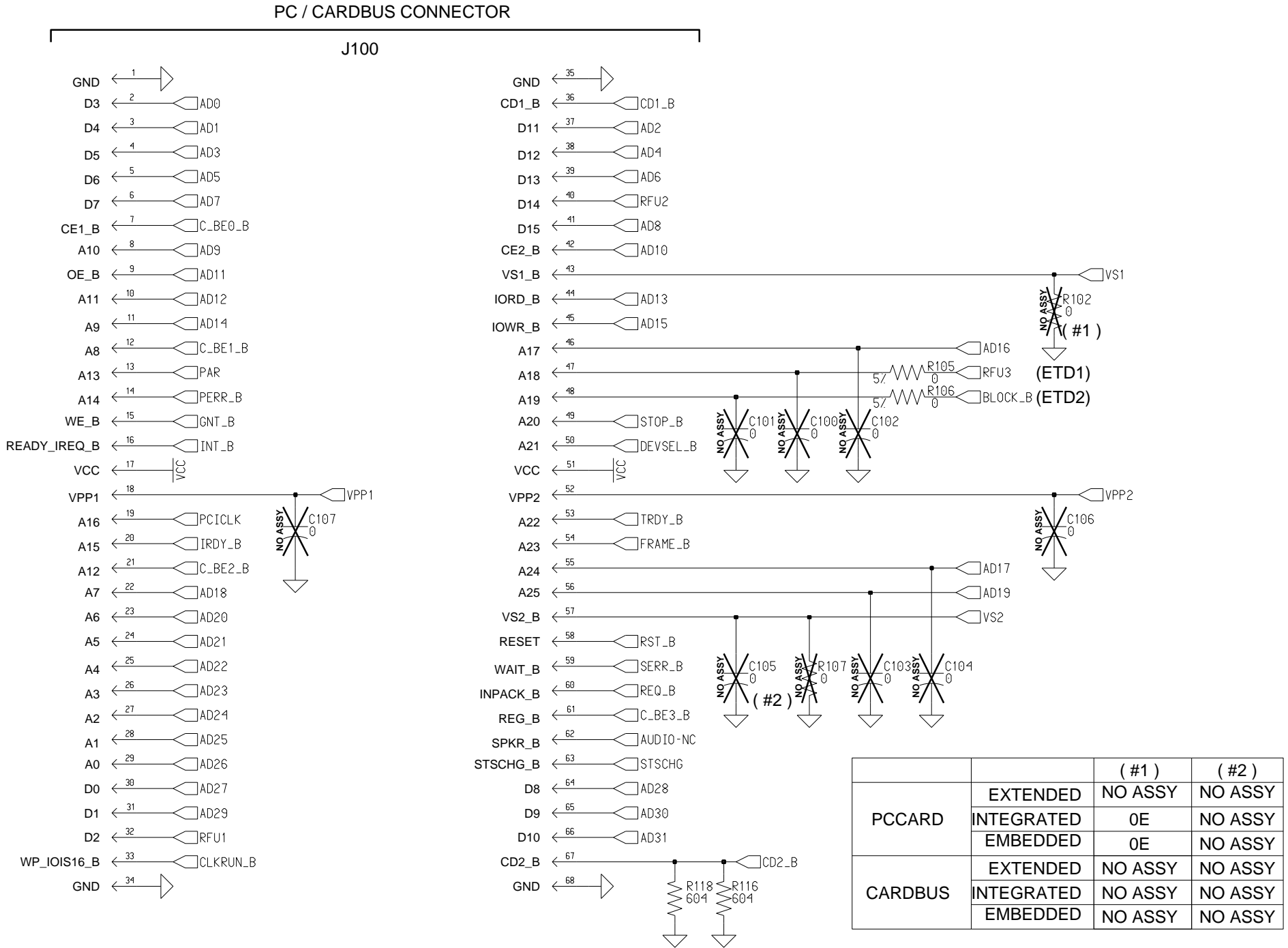


	PC CARD	CARDBUS
#A	0E	NO ASSY
#B	0E	NO ASSY
#C	0E	NO ASSY
#D	0E	NO ASSY
#E	0E	NO ASSY
#F	NO ASSY	0E
#G	NO ASSY	0E
#H	NO ASSY	0E
#I	NO ASSY	0E
#J	NO ASSY	0E
#K	1K	0E
#L	NO ASSY	0E
#M	100K	NO ASSY
#N	604	NO ASSY
#O	604	NO ASSY



		(#1)	(#2)
PCCARD	EXTENDED	NO ASSY	NO ASSY
	INTEGRATED	0E	NO ASSY
	EMBEDDED	0E	NO ASSY
CARDBUS	EXTENDED	NO ASSY	NO ASSY
	INTEGRATED	NO ASSY	NO ASSY
	EMBEDDED	NO ASSY	NO ASSY

REV

A

The content of this document is Agere Systems Intellectual Property and is the property of Agere Systems. It is to be treated as STRICTLY CONFIDENTIAL and is NOT TO BE DISCLOSED, REPRODUCED, OR USED except as authorized in writing by Agere Systems in connection with the manufacture, maintenance and use of the Agere systems equipment to which it pertains.
COPYRIGHT © 2002. Agere Systems.

8u402

Agere System Nederland B.V.
NIEUWEGEIN , THE NETHERLANDS

START: -

FINISH: -

UNIT: ORINOCO/IEEE PC Card type 2 16 bit 3V/5V/ RUBY EXTENDED SA

DFTS: -

CHKR: -

NAME: Host Interface

DESIGNER: Jeroen Sturkenboom

DATE: Wednesday, August 14, 2002 9:35:34 am

APPD: -

APPD: -

SHEET: 1 OF 7

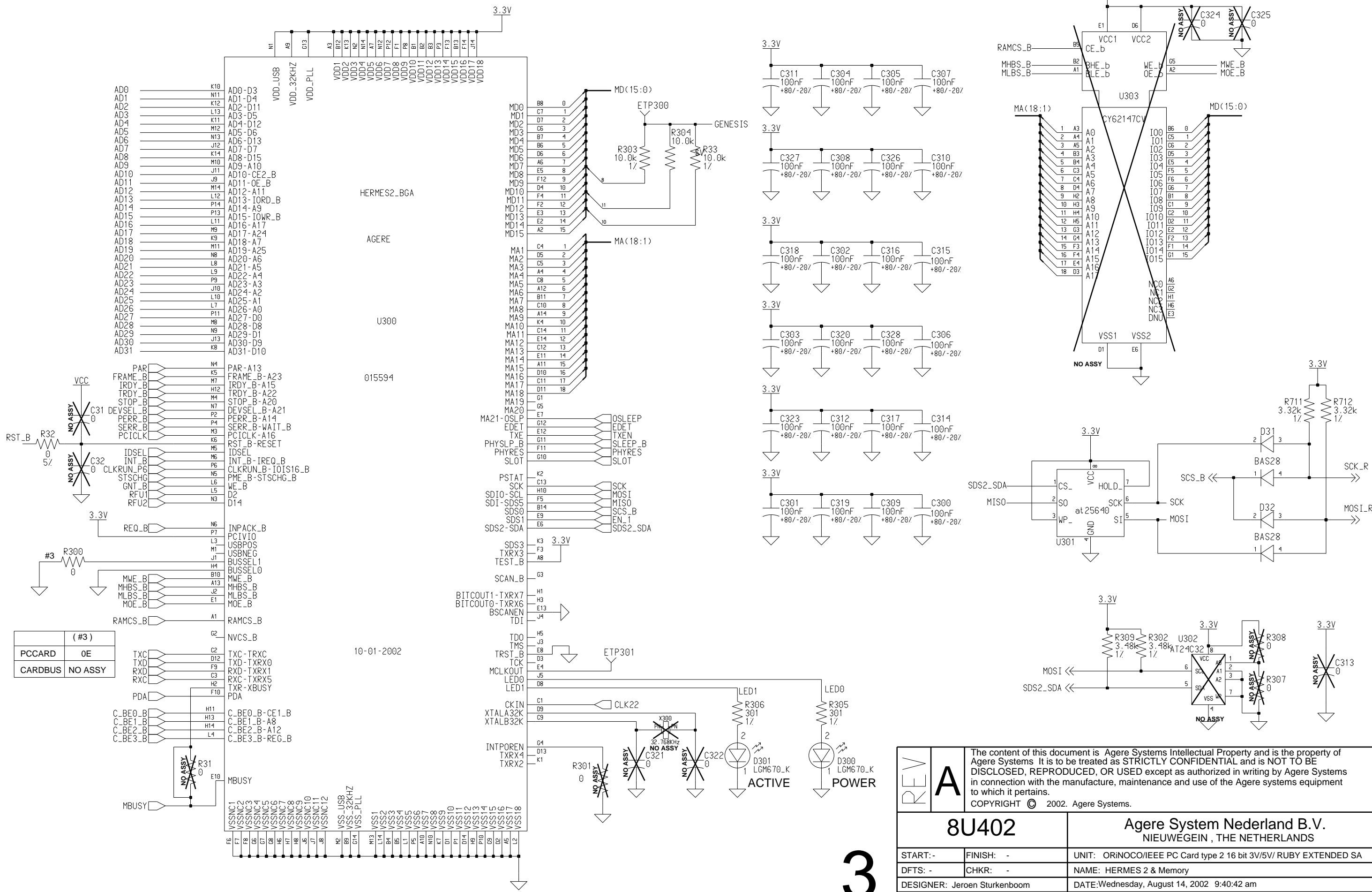
SUPSD: -

SCALE: -

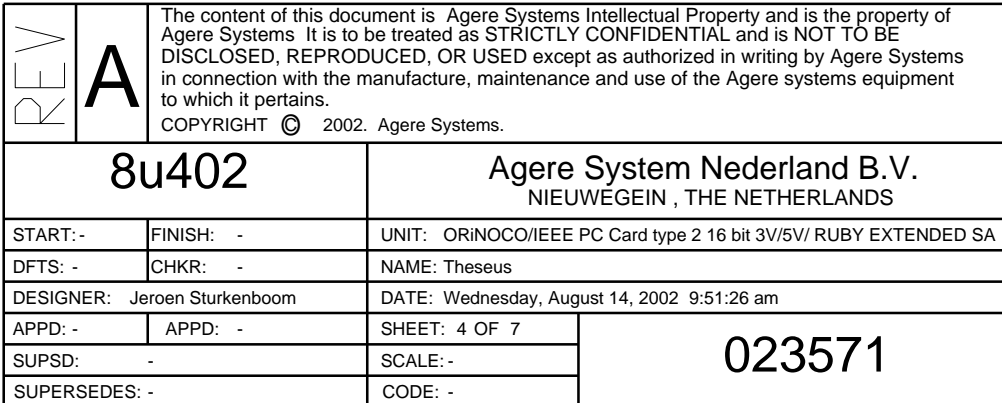
023571

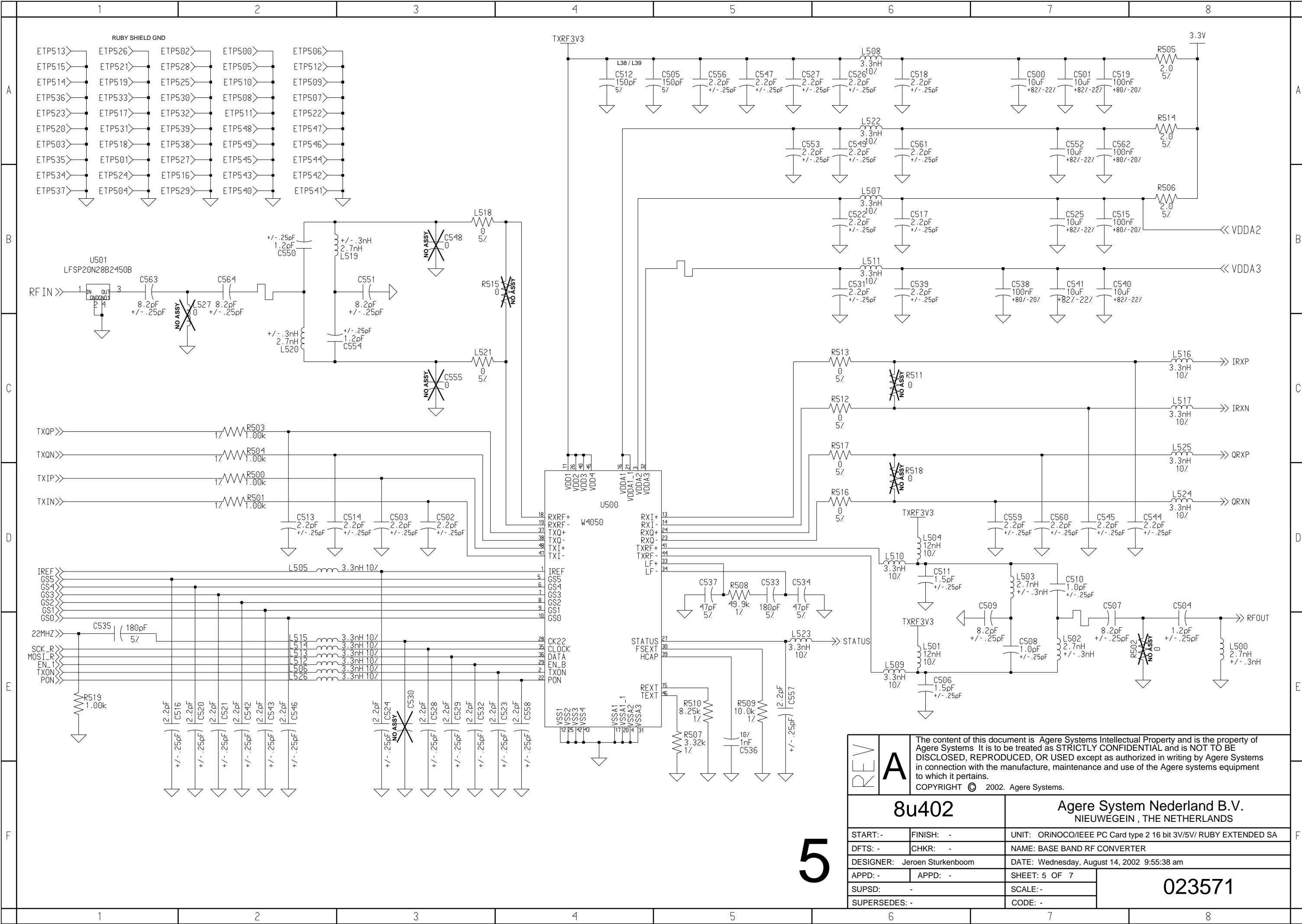
SUPERSEDES: -

CODE: -



REV A		The content of this document is Agere Systems Intellectual Property and is the property of Agere Systems. It is to be treated as STRICTLY CONFIDENTIAL and is NOT TO BE DISCLOSED, REPRODUCED, OR USED except as authorized in writing by Agere Systems in connection with the manufacture, maintenance and use of the Agere systems equipment to which it pertains. COPYRIGHT © 2002. Agere Systems.	
8U402		Agere System Nederland B.V. NIEUWEGEIN, THE NETHERLANDS	
START: -	FINISH: -	UNIT: ORINOCO/IEEE PC Card type 2 16 bit 3V/5V/ RUBY EXTENDED SA	
DFTS: -	CHKR: -	NAME: HERMES 2 & Memory	
DESIGNER: Jeroen Sturkenboom		DATE: Wednesday, August 14, 2002 9:40:42 am	
APPD: -	APPD: -	SHEET: 3 OF 7	023571
SUPSD: -	SUPSD: -	SCALE: -	
SUPERSEDES: -	SUPERSEDES: -	CODE: -	





6

