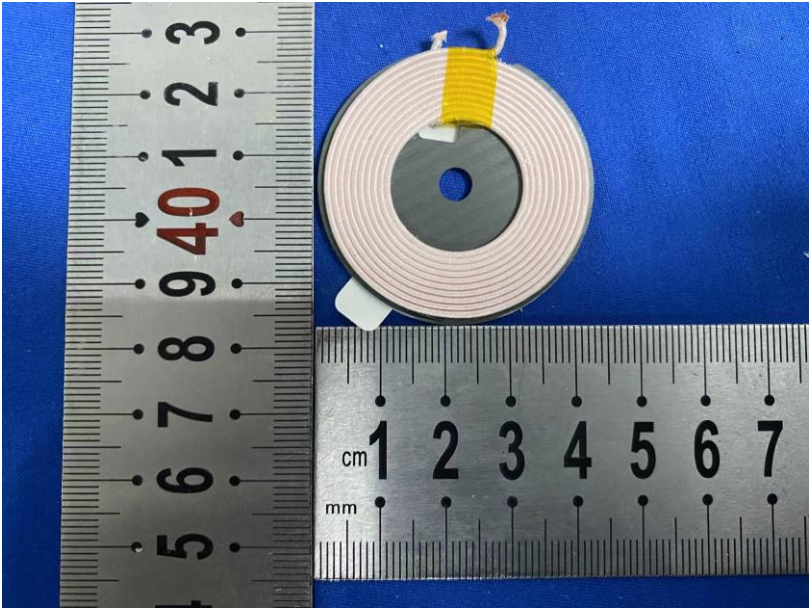
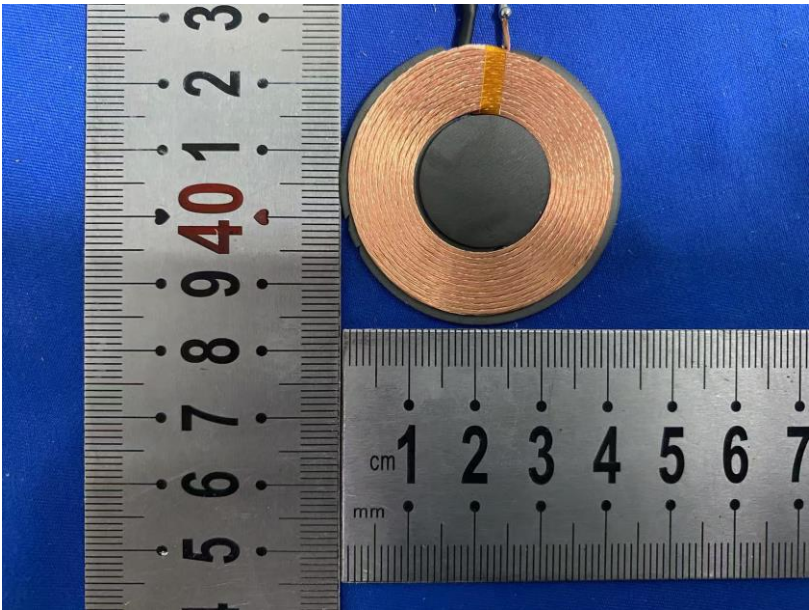


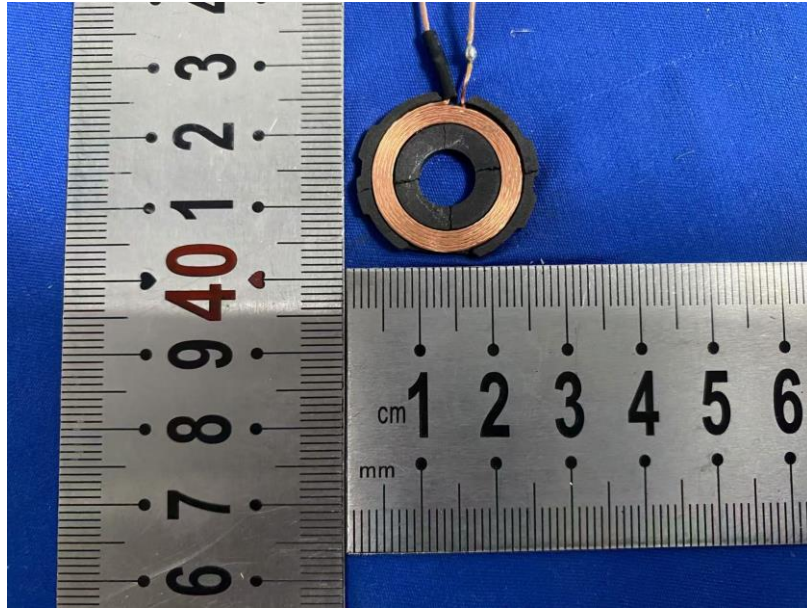
ANT PHTOT



L	W	H
42mm±0. 2	42mm±0. 2	0. 2mm±0. 1



L	W	H
42mm±0. 2	42mm±0. 2	0. 2mm±0. 1



L	W	H
23mm±0.2	23mm±0.2	0.2mm±0.1

All measurements were performed radiated and therefore additional antenna gain documentation is not required.